

MISSOURI PRESERVATION

*Preserving Place And Community For Future Generations*

# Saving Places

## Why We Do It & Convincing Others to Join the Cause

Riley Price

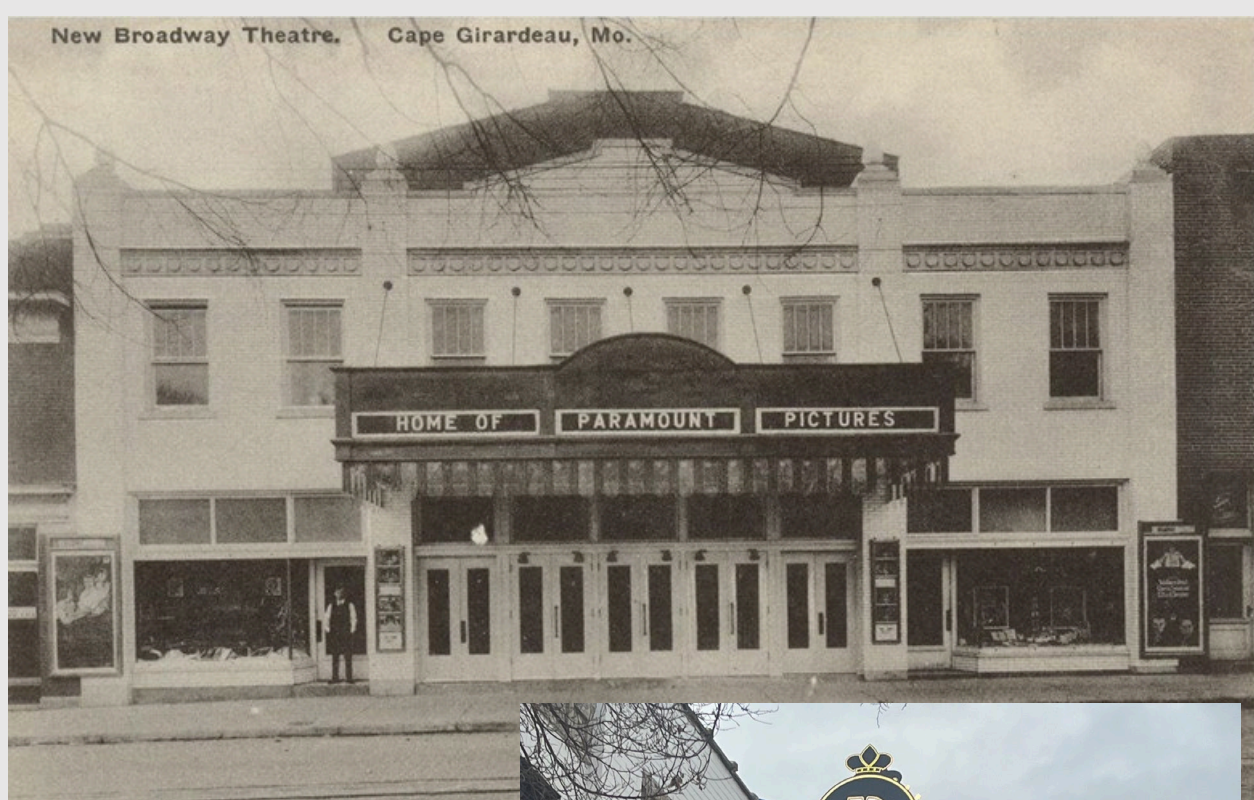
Executive Director

# Why Historic Preservation?

# Aesthetics



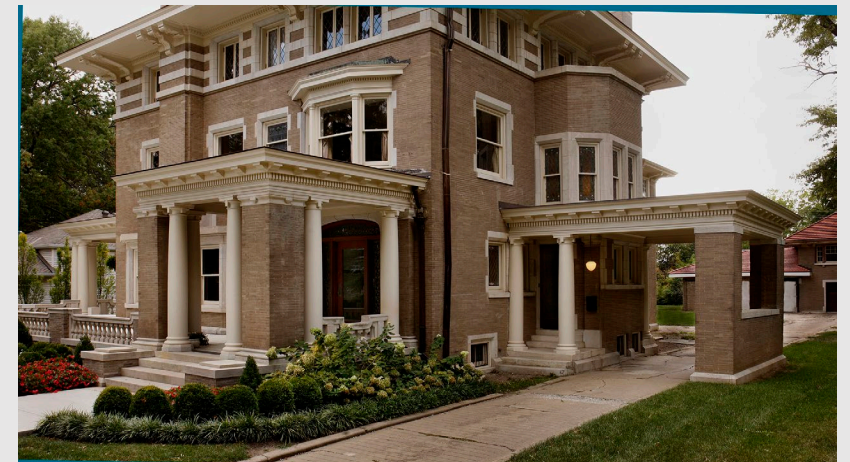
# Connections



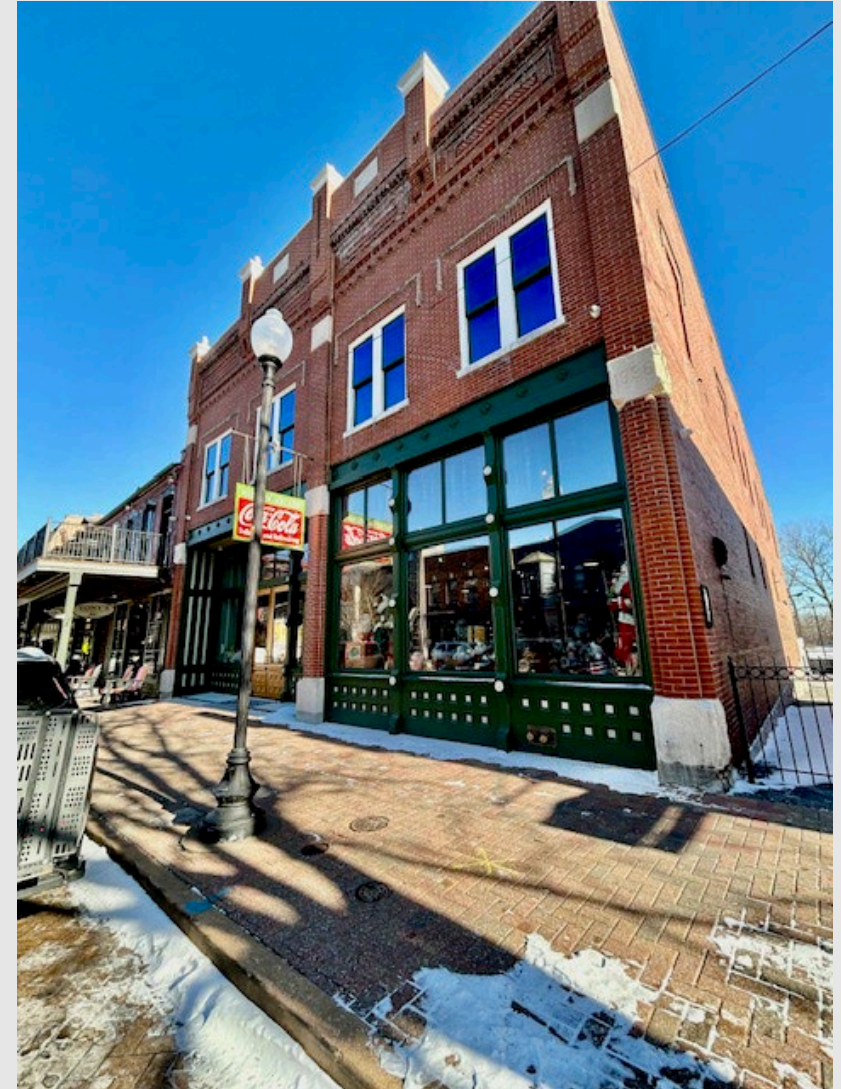
# Educational Value



# Sustainability



# Economically Friendly



# How Do We Preserve?

Advocacy & Education

# Recognition Programs

- Award Programs
- Historic Landmarking & Century Homes
- Historic Legacy Districts
- Endangered Lists



# Interpretation

- Signage
- Media
- Tours
- Educational Sessions & Seminars
- Workshops & Demonstrations

***Audiences must care about a resource before they value the preservation of the resource.***

National Park Service, Tenets of Interpretation



# Interpretation

- Consider interpretive planning in your community!

***“The chief aim of Interpretation is not instruction, but provocation.”  
— Freeman Tilden, principle no. 4***



# How Do We Preserve?

Partners & Resources

# Government Partners

- National Park Service
  - Educational Materials
  - Preservation Briefs & Technical Notes
  - Federal Historic Tax Credit Program
- State Historic Preservation Office
  - Digitized National Register of Historic Places Listings
  - Grant Funds
  - State Historic Tax Credit Program
- Certified Local Government Programs



# Nonprofit Partners

- Missouri Preservation
  - Places in Peril Program
- State Historical Society of Missouri
  - Online archives
  - List of local historical societies
- Local historical societies & libraries
  - Local archives
- Missouri Historical Society
- Missouri Main Street Connection
- Missouri Humanities Council



# Schools & Student Groups

- K – 12
- Local university students
- Scouting groups





# MISSOURI PRESERVATION

*Preserving Place And Community For Future Generations*

Riley Price

[director@preservemo.org](mailto:director@preservemo.org)

[www.preservemo.org](http://www.preservemo.org)

