

United States Department of the Interior
National Park Service

NATIONAL REGISTER OF HISTORIC PLACES
REGISTRATION FORM

This form is for use in nominating or requesting determinations for individual properties and districts. See instructions in How to Complete the National Register of Historic Places Registration Form (National Register Bulletin 16A). Complete each item by marking "x" in the appropriate box or by entering the information requested. If any item does not apply to the property being documented, enter "N/A" for "not applicable." For functions, architectural classification, materials, and areas of significance, enter only categories and subcategories from the instructions. Place additional entries and narrative items on continuation sheets (NPS Form 10-900a). Use a typewriter, word processor, or computer, to complete all items.

1. Name of Property

historic name Williamson-Kennedy School

other names/site number N/A

2. Location

street & number 614 Lindsay Street not for publication N/A

city or town Poplar Bluff vicinity N/A

state Missouri code MO county Butler code 023 zip code 63901

3. State/Federal Agency Certification

As the designated authority under the National Historic Preservation Act of 1986, as amended, I hereby certify that this X nomination request for determination of eligibility meets the documentation standards for registering properties in the National Register of Historic Places and meets the procedural and professional requirements set forth in 36 CFR Part 60. In my opinion, the property X meets does not meet the National Register Criteria. I recommend that this property be considered significant nationally statewide X locally. (See continuation sheet for additional comments.)

Claire F. Blackwell 24 Dec 98
Signature of certifying official Claire F. Blackwell Date
Deputy SFRPO

Missouri Department of Natural Resources
State or Federal agency and bureau

In my opinion, the property meets does not meet the National Register criteria. (See continuation sheet for additional comments.)

Signature of commenting or other official Date

State or Federal agency and bureau

4. National Park Service Certification

I, hereby certify that this property is:
 entered in the National Register _____
 See continuation sheet.
 determined eligible for the _____
National Register
 See continuation sheet.
 determined not eligible for the _____
National Register
 removed from the National Register _____
 other (explain): _____

Signature of Keeper Date of Action

Williamson-Kennedy School
Name of Property

Butler County, MO
County and State

5. Classification

Ownership of Property (Check as many boxes as apply) Category of Property (Check only one box)

- | | |
|--|---|
| <input type="checkbox"/> private | <input checked="" type="checkbox"/> building(s) |
| <input checked="" type="checkbox"/> public-local | <input type="checkbox"/> district |
| <input type="checkbox"/> public-State | <input type="checkbox"/> site |
| <input type="checkbox"/> public-Federal | <input type="checkbox"/> structure |
| | <input type="checkbox"/> object |

Number of Resources within Property

(Do not include previously listed resources in the count).

Contributing	Noncontributing
<u>1</u>	<u>1</u> buildings
<u>0</u>	<u>0</u> sites
<u>1</u>	<u>0</u> structures
<u>0</u>	<u>0</u> objects
<u>2</u>	<u>1</u> Total

Number of contributing resources previously listed in the National Register 0

Name of related multiple property listing (Enter "N/A" if property is not part of a multiple property listing.)

Historic Resources of Poplar Bluff, Missouri

6. Function or Use

Historic Functions (Enter categories from instructions)

<u>EDUCATION</u>	<u>School</u>
_____	_____
_____	_____
_____	_____
_____	_____

Current Functions (Enter categories from instructions)

<u>VACANT/NOT IN USE</u>	_____
_____	_____
_____	_____
_____	_____
_____	_____

7. Description

Architectural Classification (Enter categories from instructions)

LATE 19TH AND 20TH CENTURY REVIVALS
/Colonial Revival

Materials (Enter categories from instructions)

foundation	<u>concrete</u>
roof	<u>asphalt</u>
walls	<u>brick</u>
other	<u>wood</u>

Narrative Description

(Describe the historic and current condition of the property on one or more continuation sheets.)

Williamson-Kennedy School
Name of Property

Butler County, MO
County and State

8. Statement of Significance

Applicable National Register Criteria

(Mark "x" in one or more boxes for the criteria qualifying the property for National Register listing)

- X A Property is associated with events that have made a significant contribution to the broad patterns of our history.
- B Property is associated with the lives of persons significant in our past.
- C Property embodies the distinctive characteristics of a type, period, or method of construction or represents the work of a master, or possesses high artistic values, or represents a significant and distinguishable entity whose components lack individual distinction.
- D Property has yielded, or is likely to yield information important in prehistory or history.

Criteria Considerations

(Mark "X" in all the boxes that apply.)

- A owned by a religious institution or used for religious purposes.
- B removed from its original location.
- C a birthplace or a grave.
- D a cemetery.
- E a reconstructed building, object, or structure.
- F a commemorative property.
- G less than 50 years of age or achieved significance within the past 50 years.

Areas of Significance

(Enter categories from instructions).

EDUCATION

Period of Significance

1922 - 1947

Significant Dates

1922

Significant Person

(Complete if Criterion B is marked above)

N/A

Cultural Affiliation

N/A

Architect/Builder

Architect/Unknown
Builder/Unknown

Narrative Statement of Significance

(Explain the significance of the property on one or more continuation sheets.)

9. Major Bibliographical References

(Cite the books, articles, and other sources used in preparing this form on one or more continuation sheets.)

Previous documentation on file (NPS)

- preliminary determination of individual listing (36 CFR 67) has been requested.
- previously listed in the National Register
- previously determined eligible by the National Register
- designated a National Historic Landmark
- recorded by Historic American Buildings Survey # _____
- recorded by Historic American Engineering Record # _____

Primary Location of Additional Data

- X State Historic Preservation Office
- Other State agency
- Federal agency
- Local government
- University
- Other

Name of repository: Department of Natural Resources

Williamson-Kennedy School
Name of Property

Butler County, MO
County and State

10. Geographical Data

Acreage of Property 2.03 acres

UTM References

(Place additional UTM references on a continuation sheet)

Zone Easting Northing Zone Easting Northing

1 15 732840 4071290 3 _____

2 _____ 4 _____

____ See continuation sheet.

Verbal Boundary Description

(Describe the boundaries of the property on a continuation sheet.)

Boundary Justification

(Explain why the boundaries were selected on a continuation sheet.)

11. Form Prepared By

name/title Philip Thomason

organization Thomason and Associates date 4/23/97

street & number P.O. Box 121225 telephone (615) 385-4960

city or town Nashville state TN zip code 37212

Additional Documentation

Submit the following items with the completed form:

Continuation Sheets

Maps

A USGS map (7.5 or 15 minute series) indicating the property's location.

A sketch map for historic districts and properties having large acreage or numerous resources.

Photographs

Representative black and white photographs of the property.

Additional items

(Check with the SHPO or FPO for any additional items)

Property Owner

(Complete this item at the request of the SHPO or FPO.)

name Willard Allison

street & number 820 N. F Street telephone 573-686-2502

city or town Poplar Bluff state MO zip code 63901

United States Department of the Interior
National Park Service

NATIONAL REGISTER OF HISTORIC PLACES
CONTINUATION SHEET

Section 7 Page 1

Williamson-Kennedy School
name of property
Butler County, Missouri
county and State
Historic Resources of Poplar Bluff, MO

Summary

The Williamson-Kennedy School is a three-story public school building constructed in the Colonial Revival style in 1922. The Williamson-Kennedy School is located at 614 Lindsay Avenue in Poplar Bluff, Missouri. The building is located in a residential neighborhood north of the downtown commercial area. Constructed as a public school, its use as a public educational facility has continued without interruption to the present. The Williamson-Kennedy School is a rectangular plan building of brick laid in English bond. The building rests on a cast concrete foundation and has a flat roof. The building is composed of central corridors and classrooms on all three floors. Despite the loss of its original windows, the school retains overall integrity of its design, character, and setting. In addition to the school, a ca. 1990 metal building on the property is included as a non-contributing building, and an original flagpole is included as a contributing structure. The building is included within the Public Buildings (Schools) property type of the Historic Resources of Poplar Bluff, Missouri, multiple property nomination.

Narrative Description

The Williamson-Kennedy School is a three-story, rectangular plan Colonial Revival style building. Constructed of brick laid in English bond, the building rests on a cast concrete foundation and has a flat roof of asphalt based roofing material. On the main (west) facade are two primary entrances located in one-story projecting wings at the corners of the building. Each entrance has a ca. 1970 glass and aluminum door and transom. Each entrance is flanked by cast concrete Doric pilasters and above the doors are entablatures with cast concrete triglyphs and guttae. Inscribed below the entablatures are the inscriptions "Williamson-Kennedy School." Above the entablature is an open balustrade with cast concrete balusters. The cast concrete door surrounds on the entrance bays have cast concrete quoins.

Windows in the building are one-over-one sash ca. 1970 aluminum design with fixed aluminum lights above. The window openings have brick sills and soldier course lintels. The windows on the third story are divided by paired brick pilasters with Concrete Doric capitals. Above the entrance bays on the main facade, the stairwells have large ca. 1970 multi-light aluminum fixed windows. These windows have soldier course lintels and above the lintels is inset brick in diamond shaped patterns. Between the second and third floors on the main facade is a brick beltcourse and above the third floor windows is a cast concrete cornice. At the roofline is a flat concrete parapet wall.

The north, east, and south facades have a series of window bays with both rectangular and segmental arched windows. The rectangular windows have soldier course lintels while the arched windows have three courses of header bond brick. All windows on these facades have ca. 1970 aluminum sash windows. On the east (rear) facade are three entrances which have ca. 1970 aluminum and glass doors. This facade is a three-story steel fire escape which leads to a third floor entrance. Also on this facade is a brick smokestack which connects with a boiler in the basement. There are no entrances on either the north or south facades.

The interior of the building has not been extensively altered and maintains its original floor plan and design. The interior retains original wood floors and plaster walls. On the interior of the first floor, the building's main entrances open onto vestibules connecting to the main corridors. Vestibule doors consist of original ten-light double doors with fifteen light sidelights and multi-light transoms. Each corridor has a three-story wood staircase with closed stringers with vertical wood panels. The staircases have square newel posts and wood handrails.

Other interior features on the first floor include original six-light and two-panel glass and wood doors with twelve-light transoms. On the second and third floors, most entrances retain their original nine-light glass and wood doors and six-light transoms. Original

United States Department of the Interior
National Park Service

NATIONAL REGISTER OF HISTORIC PLACES
CONTINUATION SHEET

Section 7 Page 2

Williamson-Kennedy School
name of property
Butler County, Missouri
county and State
Historic Resources of Poplar Bluff, MO

ceiling heights have been maintained in the hallways, however, in the classroom areas are ca. 1970 acoustical tile drop ceilings with recessed florescent lighting. The Williamson-Kennedy School retains original radiators, baseboards, door surrounds, and chalkboards.

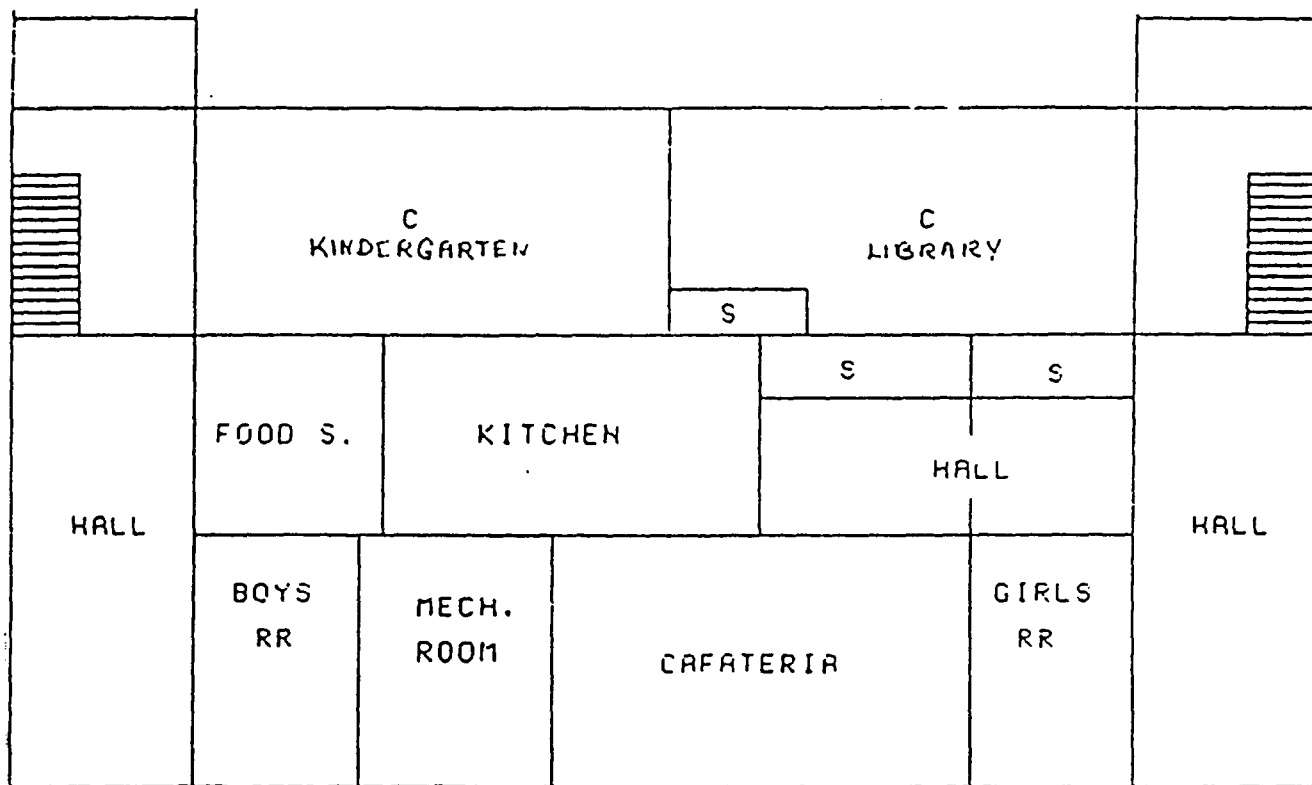
The Williamson-Kennedy School faces west towards Lindsay Avenue and is bound on the north by Homer Avenue, on the south by College Street, and on the east by Second Street. The Williamson-Kennedy School rests on a gently rolling grassed lot and a crushed stone parking area adjoins the building on the east elevation. On the north facade of the building is a ca. 1990 temporary frame building used by the school which is included as a non-contributing building to the property. On the west facade of the building is an original steel flagpole which is included as a contributing structure to the property. A semi-circular cast concrete sidewalk leads from the entrances on the main facade to a cast concrete sidewalk paralleling Lindsay Avenue.

United States Department of the Interior
National Park Service

NATIONAL REGISTER OF HISTORIC PLACES
CONTINUATION SHEET

Section 7 Page 3

Williamson-Kennedy School
name of property
Butler County, Missouri
county and State
Historic Resources of Poplar Bluff, MO



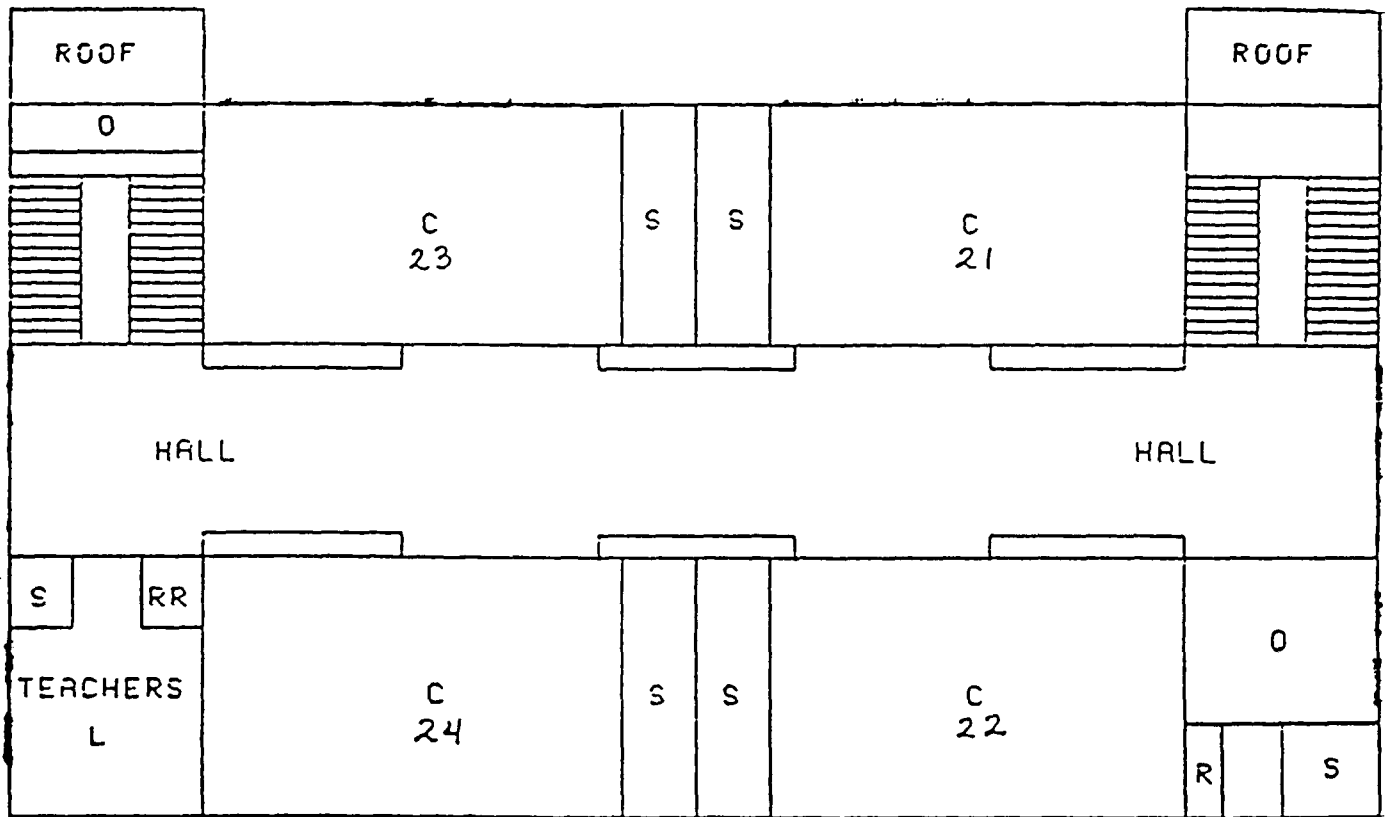
Williamson-Kennedy School
614 Lindsay Avenue
Poplar Bluff, MO
Floor Plan, First Floor
Not To Scale

United States Department of the Interior
National Park Service

NATIONAL REGISTER OF HISTORIC PLACES
CONTINUATION SHEET

Section 7 Page 4

Williamson-Kennedy School
name of property
Butler County, Missouri
county and State
Historic Resources of Poplar Bluff, MO



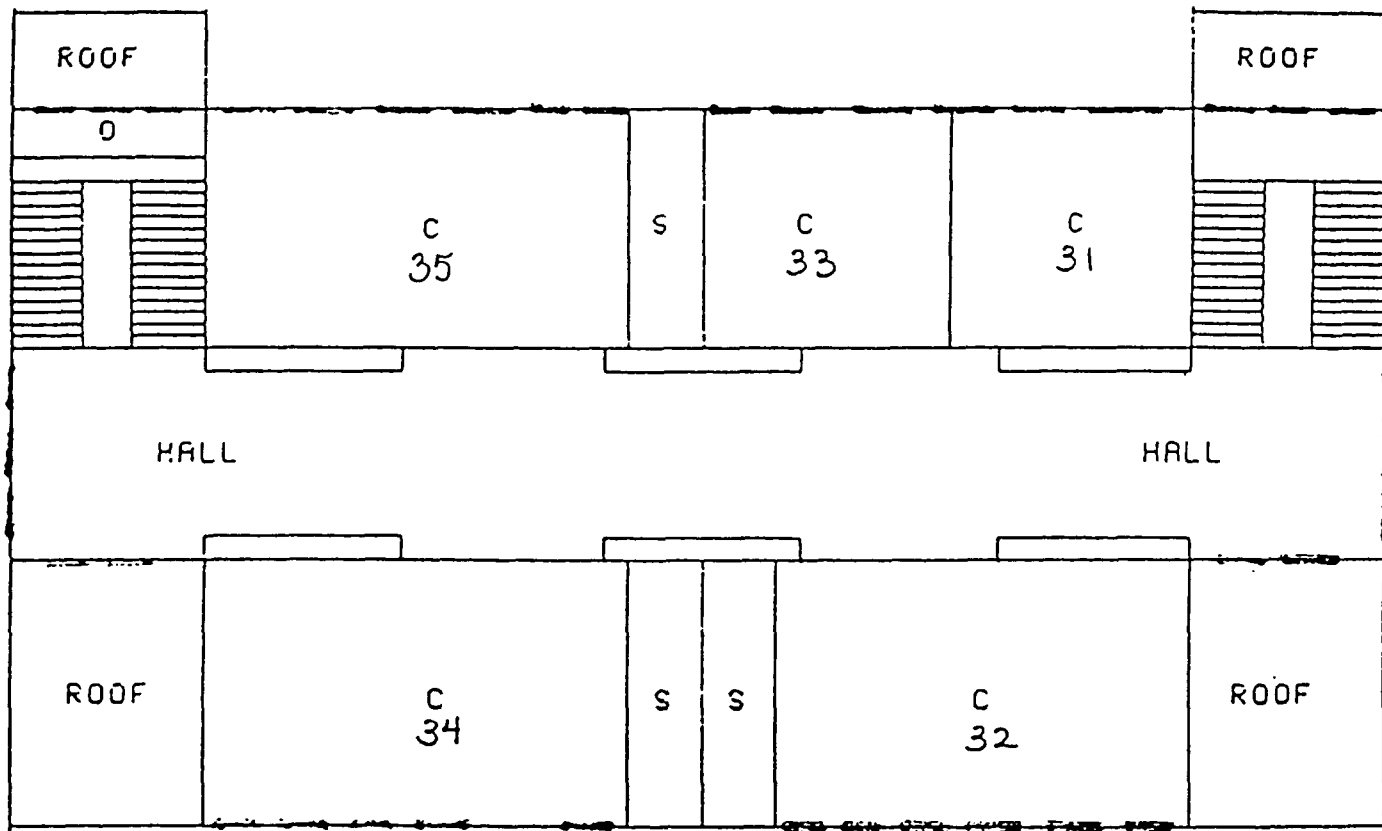
Williamson-Kennedy School
614 Lindsay Avenue
Poplar Bluff, MO
Floor Plan, Second Floor
Not To Scale

United States Department of the Interior
National Park Service

NATIONAL REGISTER OF HISTORIC PLACES
CONTINUATION SHEET

Section 7 Page 5

Williamson-Kennedy School
name of property
Butler County, Missouri
county and State
Historic Resources of Poplar Bluff, MO



Williamson-Kennedy School
614 Lindsay Avenue
Poplar Bluff, MO
Floor Plan, Third Floor
Not To Scale

United States Department of the Interior
National Park Service

NATIONAL REGISTER OF HISTORIC PLACES
CONTINUATION SHEET

Section 8 Page 6

Williamson-Kennedy School
name of property
Butler County, Missouri
county and State
Historic Resources of Poplar Bluff, MO

SUMMARY

The Williamson-Kennedy School is significant under National Register Criterion A for its role in the educational history of Poplar Bluff. The Williamson-Kennedy School was constructed in 1922 to serve as an elementary school for northeast Poplar Bluff. Along with the Wheatley Public School, it is one of two early 20th century elementary school buildings in the city which retain their original character. Although the building's original fenestration was replaced in the 1970s, its overall form, plan and Colonial Revival style detailing are evident. The building's period of significance extends from its construction date to its fifty year benchmark in 1947. The Williamson-Kennedy School is associated with the historic context of Public Buildings (Schools) of Poplar Bluff, Missouri, ca. 1883 - 1945. The building is included within the Public Buildings (Schools) property type of the Historic Resources of Poplar Bluff, Missouri, multiple property nomination.

HISTORICAL OVERVIEW

The first school in Poplar Bluff was established in 1869 by the "Butler County Education Society."¹ This two-story frame building was succeeded by a new brick public school in 1875. By the early 20th century, the Poplar Bluff school system included the Central High School building which was built in 1891 and used as a junior high school, and the Mark Twain school which was built in 1910 as the primary high school. In addition to these schools there were also several elementary schools scattered throughout the city.

The rapid expansion of the city's population in the early 20th century led the Poplar Bluff School Board to construct three new brick elementary school buildings in the 1920s. The first of these was the Williamson-Kennedy School completed in 1922 and three years later the Kenyon School was built on Vine Street. To serve the city's African American students, the two-story Wheatley Public School was constructed in 1928. Since the 1920s, the Kenyon School has been altered through the construction of a modern addition. However, both the Williamson-Kennedy School and the Wheatley Public School retain much of their original character and design.

The site of the Williamson-Kennedy School was acquired by the Poplar Bluff School Board in the 1880s and a two-story brick school known as the "Benton School" was built in 1885. This building was demolished in 1922 and the present Williamson-Kennedy elementary school was constructed at a cost of \$60,000. The building contained 20,798 square feet and was named to honor two of Benton School's long-time teachers, Hattie Williamson, and Clara Thompson Kennedy. Hattie Williamson arrived in Poplar Bluff in 1886 where she found employment as a fourth grade teacher at Benton School. Mrs. Williamson worked initially as a primary school teacher and she later became principal of the Williamson-Kennedy school and maintained that position until her retirement in 1934. Clara Thompson Kennedy moved with her husband to Poplar Bluff in 1883 where she was employed as a Benton School music teacher. She later became a fourth grade instructor and continued in that capacity until her retirement in 1923.²

The Williamson-Kennedy School was built in the Colonial Revival style, however, the architect and builder are unknown. The building was designed in the Colonial Revival style which was popular for school buildings during this period. This style emphasized symmetrical plans and utilized classical detailing such as quoins and classical pilasters and columns. The influence of this style was expressed in the Williamson-Kennedy School through its entrance detailing including quoins, Doric pilasters, open balustrades, and entablatures with cast concrete triglyphs and guttae. Elements of this style are also evident in its overall symmetrical design, paired brick pilasters with Doric capitals on the third floor, and window openings with soldier course lintels.

¹ Deem, History of Butler County, p. 79.

² *Ibid*, p. 170.

United States Department of the Interior
National Park Service

NATIONAL REGISTER OF HISTORIC PLACES
CONTINUATION SHEET

Section 8 Page 7

Williamson-Kennedy School
name of property
Butler County, Missouri
county and State
Historic Resources of Poplar Bluff, MO

The Williamson-Kennedy School is representative, but not an outstanding example of, Colonial Revival architecture. The building's appearance was altered in the 1970s through the use of modern aluminum and glass doors and windows. Due to the extent of these alterations, the building is not nominated for its architectural design but instead for its historical significance.

In 1939, Poplar Bluff contained five public grade schools (including the Williamson-Kennedy and Wheatley Schools), a senior high school (the Mark Twain School), and a junior high school (the Central High School). In this year the school system employed 81 teachers and were attended by 2,704 students.³ The Williamson-Kennedy School served students of northeast Poplar Bluff throughout the 20th century until May of 1997 when it was sold by the local school board. Future plans for the building are under consideration by the present owner. Thousands of students attended the school since it was built and it continues to be a landmark in the north section of the city.

Additional information is contained in the accompanying multiple property cover document, "Historic Resources of Poplar Bluff, Missouri."

³ Ibid, p. 81.

United States Department of the Interior
National Park Service

NATIONAL REGISTER OF HISTORIC PLACES
CONTINUATION SHEET

Section 9 Page 8

Williamson-Kennedy School
name of property
Butler County, Missouri
county and State
Historic Resources of Poplar Bluff, MO

Bibliography

Deem, David Bruce. History of Butler County, Missouri: A Narrative Account of its Historical Progress, its People and its Principal Interests. Poplar Bluff, Missouri: Poplar Bluff, Printing Company, 1925.

Loughhead, George R. Early History of Butler County, Missouri. _____: Stinson Press, 1987.

United States Department of the Interior
National Park Service

NATIONAL REGISTER OF HISTORIC PLACES
CONTINUATION SHEET

Section 10 Page 9

Williamson-Kennedy School
name of property
Butler County, Missouri
county and State
Historic Resources of Poplar Bluff, MO

Verbal Boundary Description

The boundary for the Williamson-Kennedy School is all of lot 1 on block 43 on Butler County tax map 13-2-3-1. This parcel encompasses 2.03 acres and is bounded on the north by Homer Avenue, on the east by Second Street, on the south by College Street, and on the west by Lindsay Avenue.

Verbal Boundary Justification

The boundary for the Williamson-Kennedy School includes the entire lot historically associated with the property.

United States Department of the Interior
National Park Service

NATIONAL REGISTER OF HISTORIC PLACES
CONTINUATION SHEET

Section Photographs Page 10

Williamson-Kennedy School
name of property
Butler County, Missouri
county and State
Historic Resources of Poplar Bluff, MO

Photographs

Williamson-Kennedy School
614 Lindsay Street
Poplar Bluff, Butler County, Missouri
Photo by: Thomason and Associates
Date: January 25, 1997
Location of Negatives: Department of Natural Resources

- Photograph No. 1: West facade, view towards the northeast.
- Photograph No. 2: North and east facades, view towards the southeast.
- Photograph No. 3: South and east facades, view towards the northwest.
- Photograph No. 4: Interior view of second floor hallway.
- Photograph No. 5: Interior view of first floor staircase.









