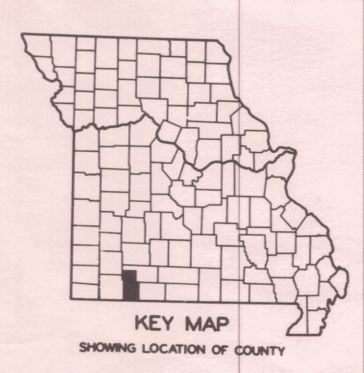


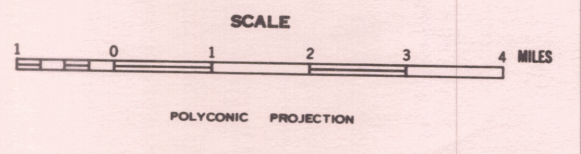
- LEGEND**
- Private Road
  - Unimproved Road
  - Graded and Drained Road
  - Soil Surface Road
  - Gravel or Stone Road
  - Bituminous Road - Low Type
  - Paved Road
  - Frontage Road
  - Divided Pavement
  - City Streets
  - Points between which Distances are Measured
  - Interstate Numbered Highway
  - U.S. Numbered Highway
  - State Numbered Highway
  - State Lettered Highway
  - Designation of Road when Built
  - Federal-aid Primary Highway System
  - Federal-aid Secondary Highway System
  - Railroad - Single Operating Company
  - Railroads Adjacent - Separately Operated
  - Railroad Station
  - Railroad Grade Crossing
  - Railroad Above
  - Railroad Below
  - Railroad Tunnel
  - Military Air Field
  - Commercial or Municipal Air Field
  - Landing Area or Strip
  - Airway Beacon Light
  - Operated Ship and Barge Lines
  - Dock Pier or Landing
  - Ferry, TF - Toll FF - Free
  - Navigable Stream
  - Dam
  - Dam with Lock
  - Dam with Road
  - Wide Stream
  - Narrow Stream
  - Intermittent Stream
  - Drainage Ditch
  - Marsh or Swamp Land
  - Reservoir, Pond or Lake
  - Reservoir with Dam
  - Levee or Dike
  - Levee or Dike with Road
  - Natural Ford
  - Paved Ford or Low Water Bridge
  - Bridge - General (span longer than 20 feet)
  - Small Bridges Closely Spaced
  - Drawbridge
  - Suspension Bridge
  - Arch Bridge
  - Steel Truss Bridge
  - City, Town and Village Limits
  - Delimited Urban Area Line
  - Park or Reservation Boundary
  - State Line
  - County Line
  - Civil Township Line
  - Congressional Township Line
  - Section Line
  - Land Grant Survey Line
  - Transmission Line
  - Correctional Institution
  - Radio or Television Station
  - Scenic Site
  - Small Park
  - Roadside Park
  - Picnic Grounds
  - Playground Ball Field etc.
  - Bathing Beach or Pool
  - Drive-in Theatre
  - Tourist Court or Motel
  - Camp or Lodge
  - Fish Hatchery
  - Bird Sanctuary
  - Game Farm or Preserve
  - Country Club or Golf Course
  - Fair Ground or Race Track
  - Farm Unit
  - Dwelling other than Farm
  - Dwellings Closely Spaced
  - Seasonal Dwellings
  - Seasonal Dwellings Closely Spaced
  - Hotel or Inn
  - Church
  - Hospital
  - Cemetery
  - Church with Cemetery Adjacent
  - Store or Small Business
  - Factory or Industrial Plant
  - Sawmill - Stationary
  - Mine or Quarry
  - Nursery
  - School House
  - Consolidated or Large School
  - Post Office
  - Town or Community Hall
  - Mixed Cultural Features Closely Spaced
  - County Home - Farm or Infirmary
  - Pumping Station - Oil or Gas
  - Combined Dwelling and Business
  - Weight Station
  - Forest Ranger Station
  - Forest Lookout Tower
  - SHD Maintenance Shed
  - State Highway Patrol Station
  - State Capitol
  - County Seat
  - Other Cities, Towns and Villages



**GENERAL HIGHWAY MAP  
STONE COUNTY  
MISSOURI**

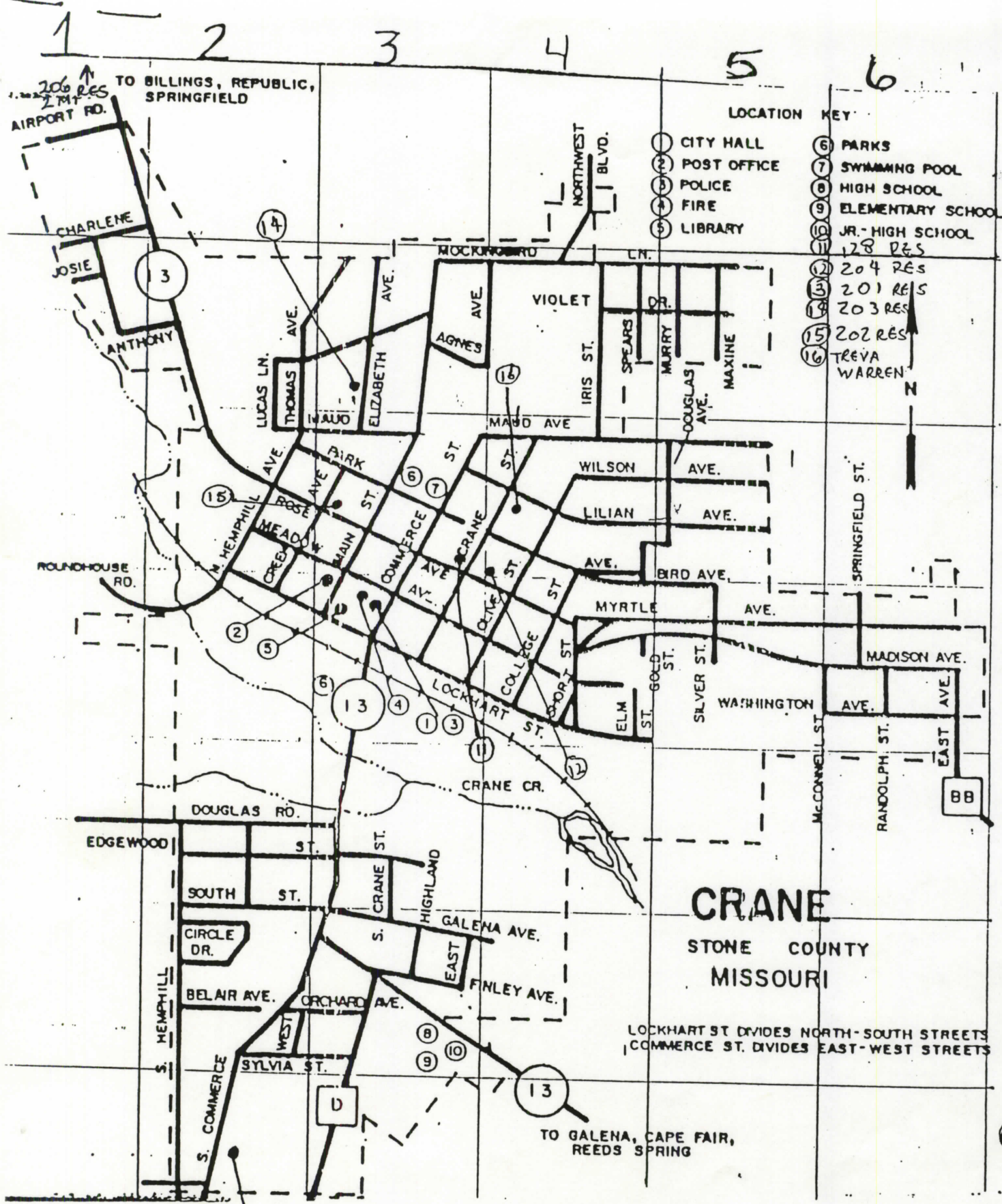
PREPARED BY THE  
**MISSOURI HIGHWAY AND TRANSPORTATION DEPARTMENT**  
DIVISION OF PLANNING

IN COOPERATION WITH THE  
**U.S. DEPARTMENT OF TRANSPORTATION**  
FEDERAL HIGHWAY ADMINISTRATION



10-1-90	STATE HIGHWAYS	56L
1-8-90	COMPLETE NEW INVENTORY	RLW
DATE	DESCRIPTION	BY
	REVISIONS	





LOCATION KEY

- 1 CITY HALL
- 2 POST OFFICE
- 3 POLICE
- 4 FIRE
- 5 LIBRARY
- 6 PARKS
- 7 SWIMMING POOL
- 8 HIGH SCHOOL
- 9 ELEMENTARY SCHOOL
- 10 JR. HIGH SCHOOL
- 11 128 RES
- 12 204 RES
- 13 201 RES
- 14 203 RES
- 15 202 RES
- 16 TREVA WARREN

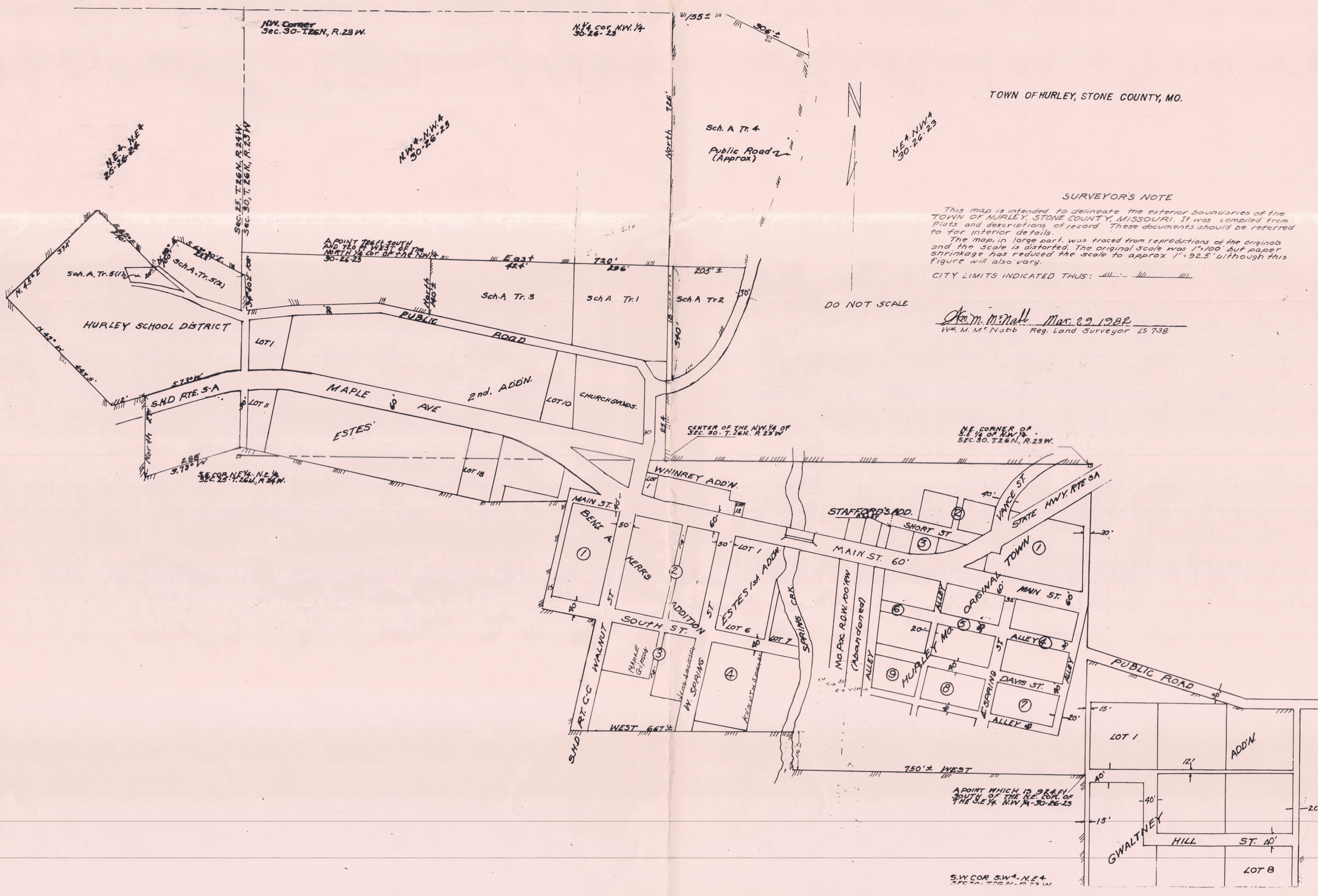
CRANE

STONE COUNTY  
MISSOURI

LOCKHART ST DIVIDES NORTH-SOUTH STREETS  
COMMERCE ST. DIVIDES EAST-WEST STREETS

A  
B  
C  
D  
E  
F  
G



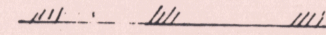


TOWN OF HURLEY, STONE COUNTY, MO.

SURVEYOR'S NOTE

This map is intended to delineate the exterior boundaries of the TOWN OF HURLEY, STONE COUNTY, MISSOURI. It was compiled from Plats and descriptions of record. These documents should be referred to for interior details.

The map, in large part, was traced from reproductions of the originals and the scale is distorted. The original scale was 1"=100' but paper shrinkage has reduced the scale to approx 1"=92.5' although this figure will also vary.

CITY LIMITS INDICATED THUS: 

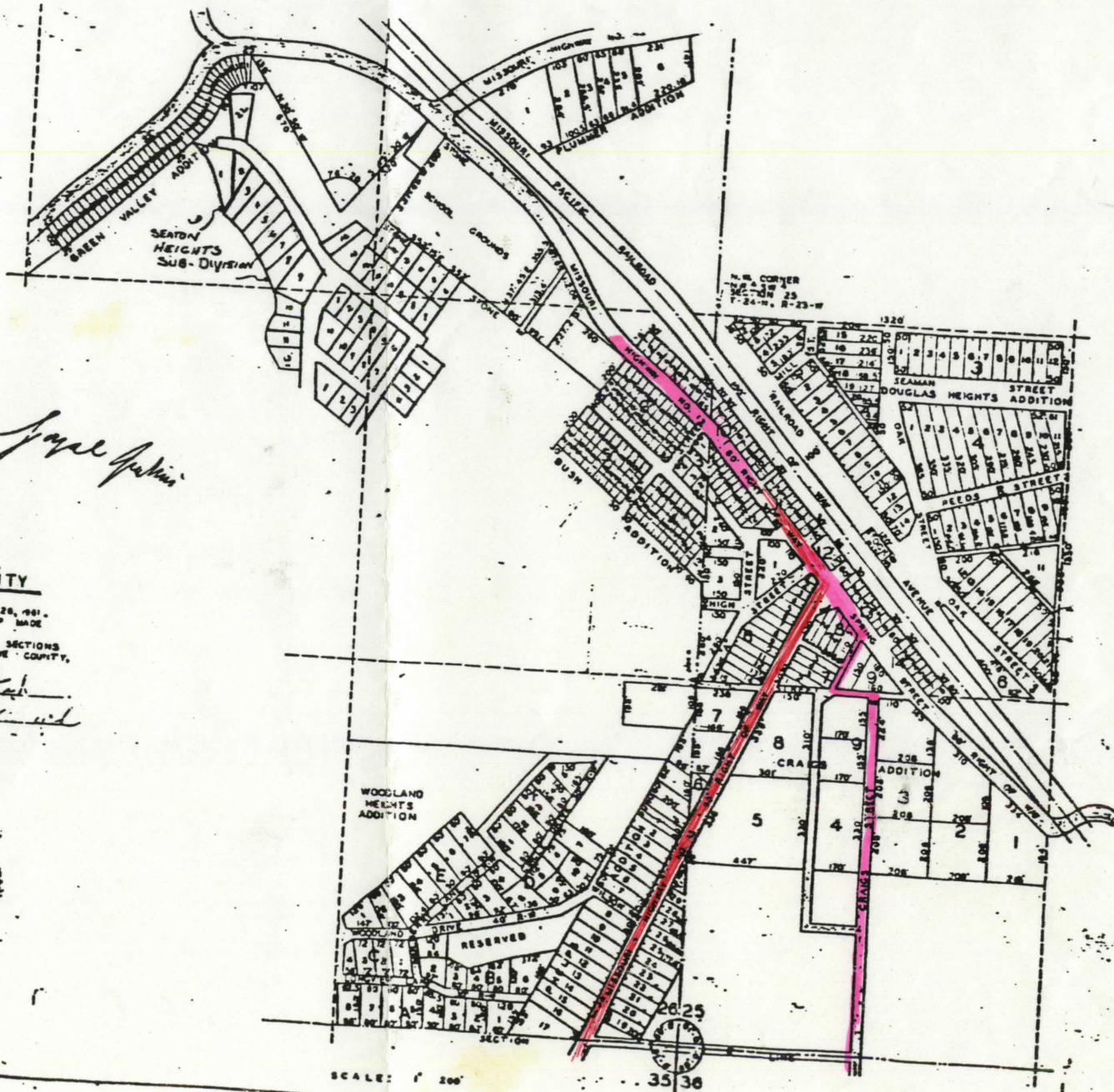
DO NOT SCALE

*W. M. McNeill* Mar. 29, 1982  
W. M. McNeill Reg. Land Surveyor 15738

A POINT WHICH IS 92.5' SOUTH OF THE N.E. COR. OF THE S.E. 1/4, NW 1/4-30-26-23

SW COR SW 1/4-NE 1/4-30-26-23





*Free John*

BY CITY

CR. G. HART MAY 28, 1911.  
 ORIGINAL MAP MADE  
 IS LOCATED IN SECTIONS  
 35 & 36, STONE COUNTY,

*Frank D. Hart*  
*City Engineer*

OLD JUL 20 1911



*Beck's Spring Junction*

