

# SHEPHERD OF THE HILLS STATE PARK



# **SHEPHERD OF THE HILLS STATE PARK**

**PUBLIC MEETING**

**OCTOBER 17, 2024**



# STAFFING UPDATES



# PROJECT PHASING

## Phase 1

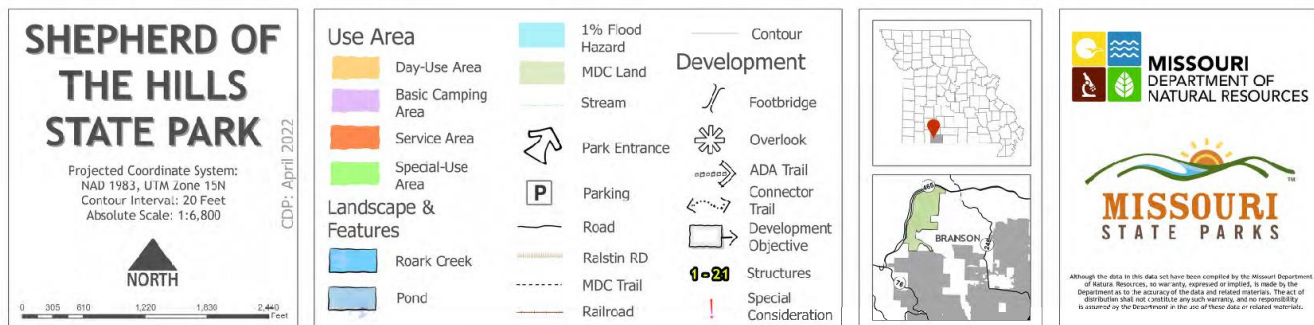
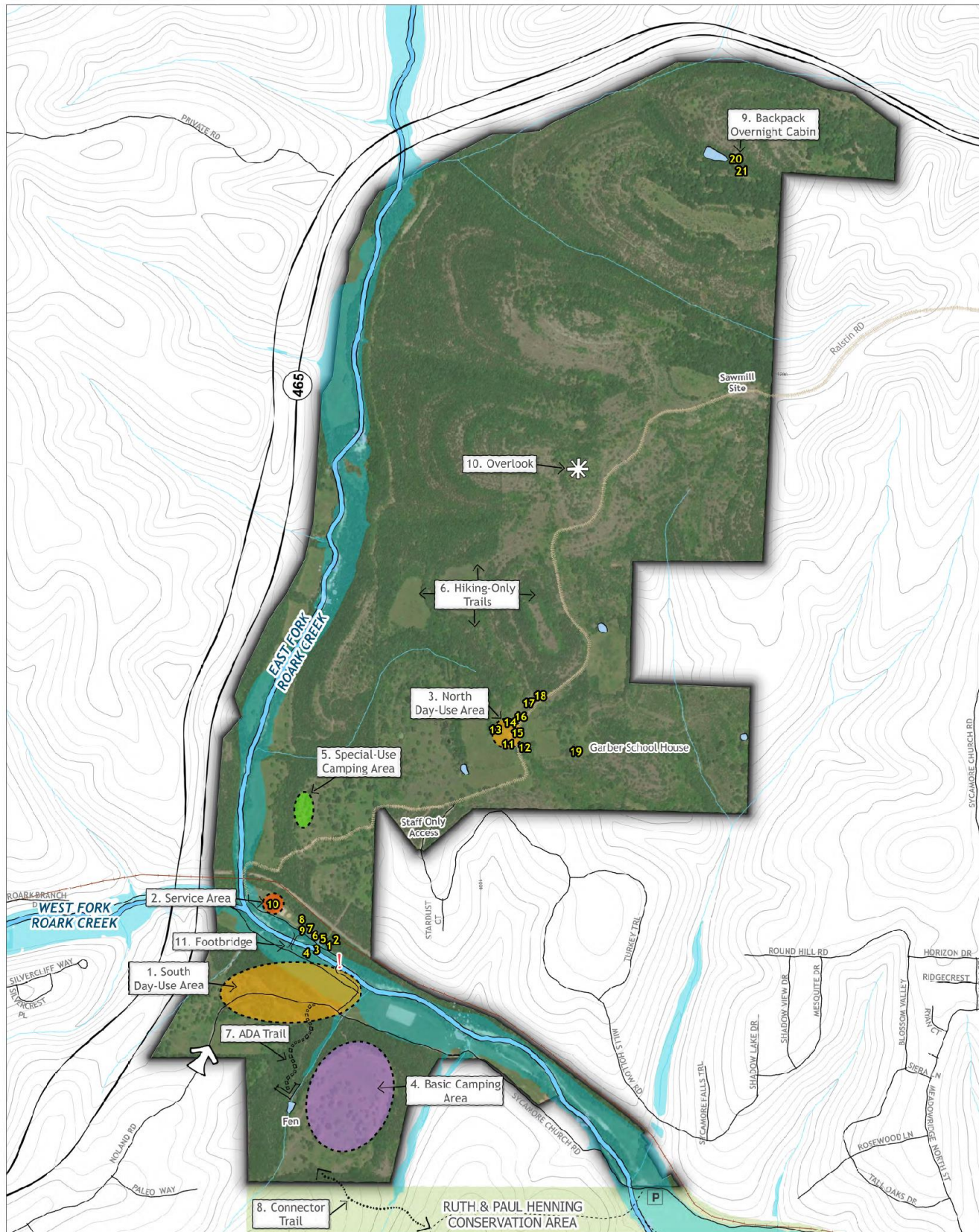
- South day-use area
- Footbridge over Roark Creek
- Hiking-only trails
- Overlook
- Service area
- Ruth and Paul Henning Conservation Area connector trail

## Phase 2

- North day-use area
- Special-use camping area
- ADA trail
- Hiking-only trail expansion

## Phase 3

- Basic camping area
- Backpack overnight cabin
- Low-water crossing replacement



# BUILDING REMOVAL, RESTORATION, AND RENOVATIONS

- Demolition of Hazardous Buildings
- Develop Plans for Restoration of the Garber School House and the Log Barn
- Renovation of the Horse Barn



# SHEPHERD OF THE HILLS OFFICE COMPLEX

- Office and Visitor Center
- Shop and Storage Bay
- Seasonal Housing

Employee Entrance

Vehicle Storage Bay

39.5' x 48'

Workshop

39.5' x 47.5'

6' x 6'  
om  
Training Room

00567





# NATURAL RESOURCE STEWARDSHIP

Taylor Steinfeldt  
Natural Resource Ecologist





# 2023-2024 STEWARDSHIP OVERVIEW

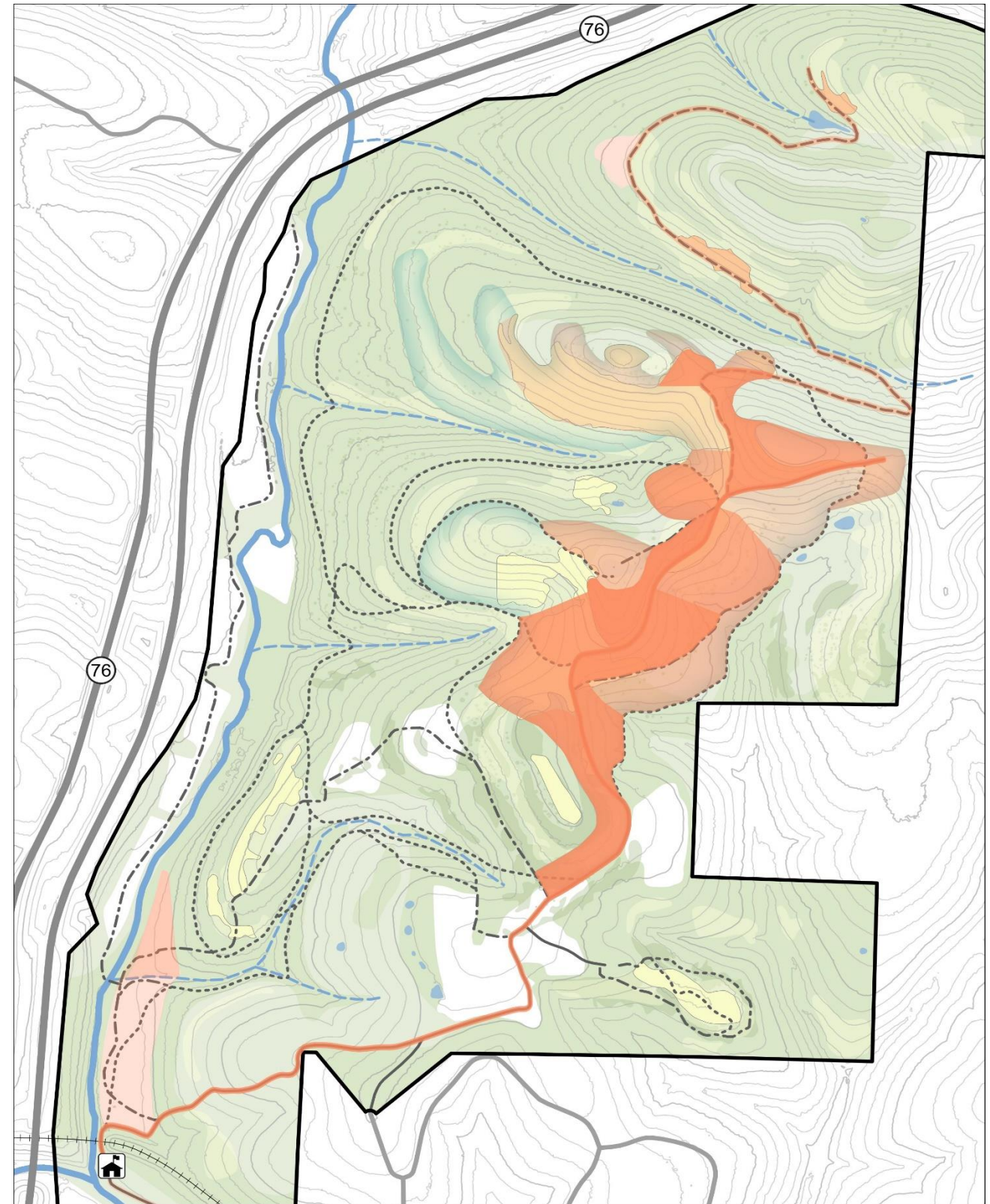
- Invasive Species Management
- Firelines and Prescribed Burning
- Plant, Animal, and Habitat Surveys
- Glade Restoration
- Partnership with AmeriCorps



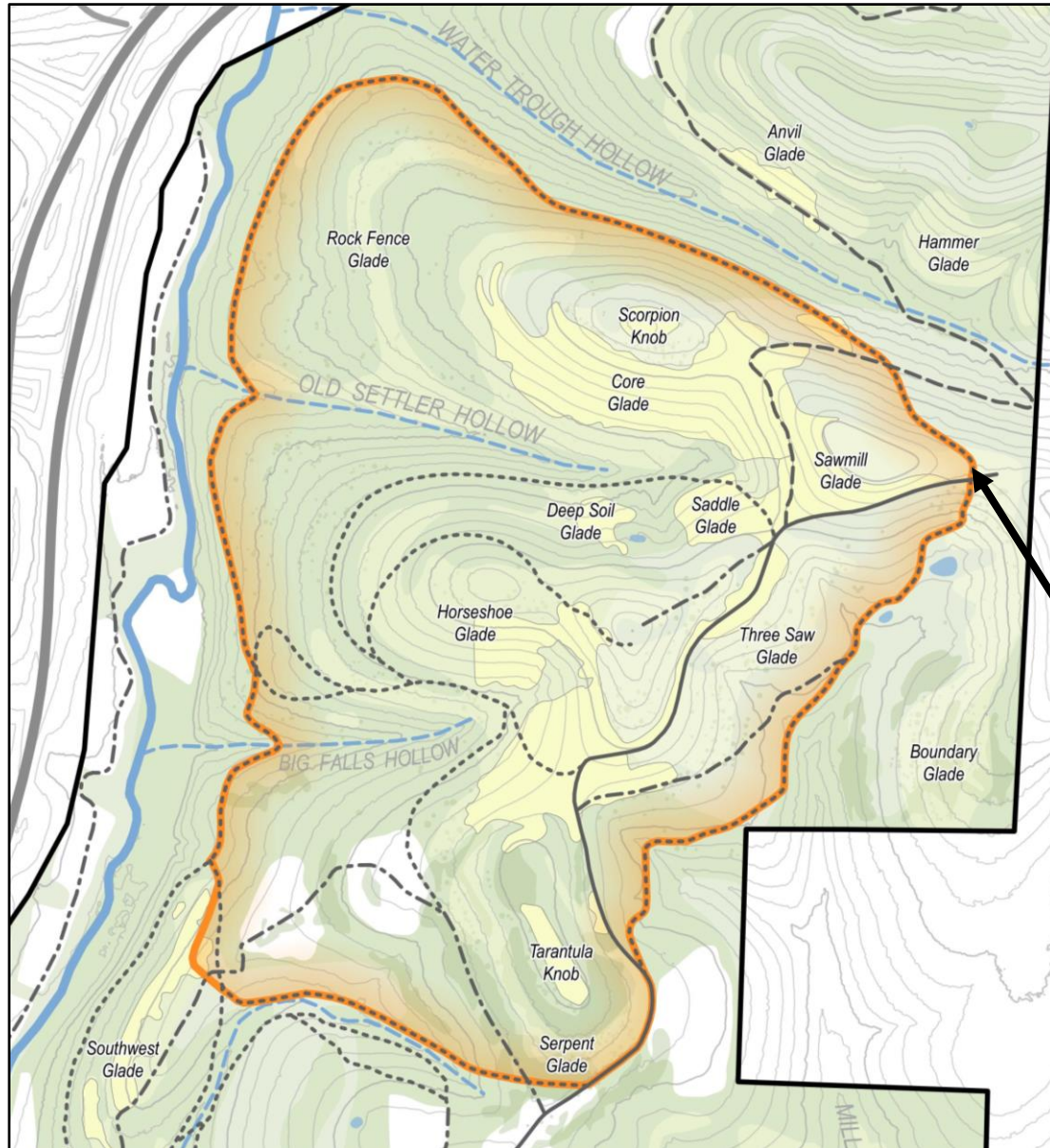
# INVASIVE SPECIES MANAGEMENT

## INVASIVE PLANT SPECIES

- Sericea Lespedeza (*Lespedeza cuneata*)
- Johnson Grass (*Sorghum halepense*)
- Multiflora Rose (*Rosa multiflora*)
- Bush Honeysuckle (*Lonicera tatarica*)
- Bull Thistle (*Cirsium vulgare*)
- Tree of Heaven (*Ailanthus altissima*)



# FIRELINES AND PRESCRIBED FIRE



## 2023-2024 Prescribed Burn Season

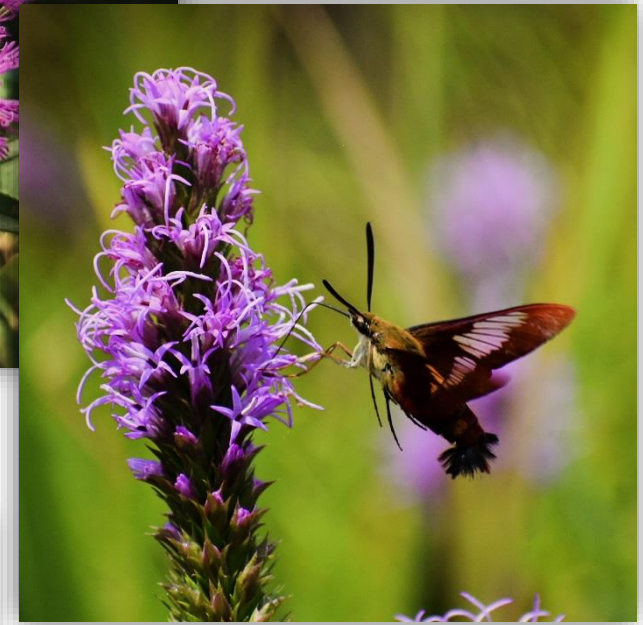
### Core Glade Burn Unit (March 11, 2024)

- 300 Acres
- 2.95 Miles of Fireline
- Completed with the Assistance of 18 Crew Members



# FIRELINES AND PRESCRIBED FIRE

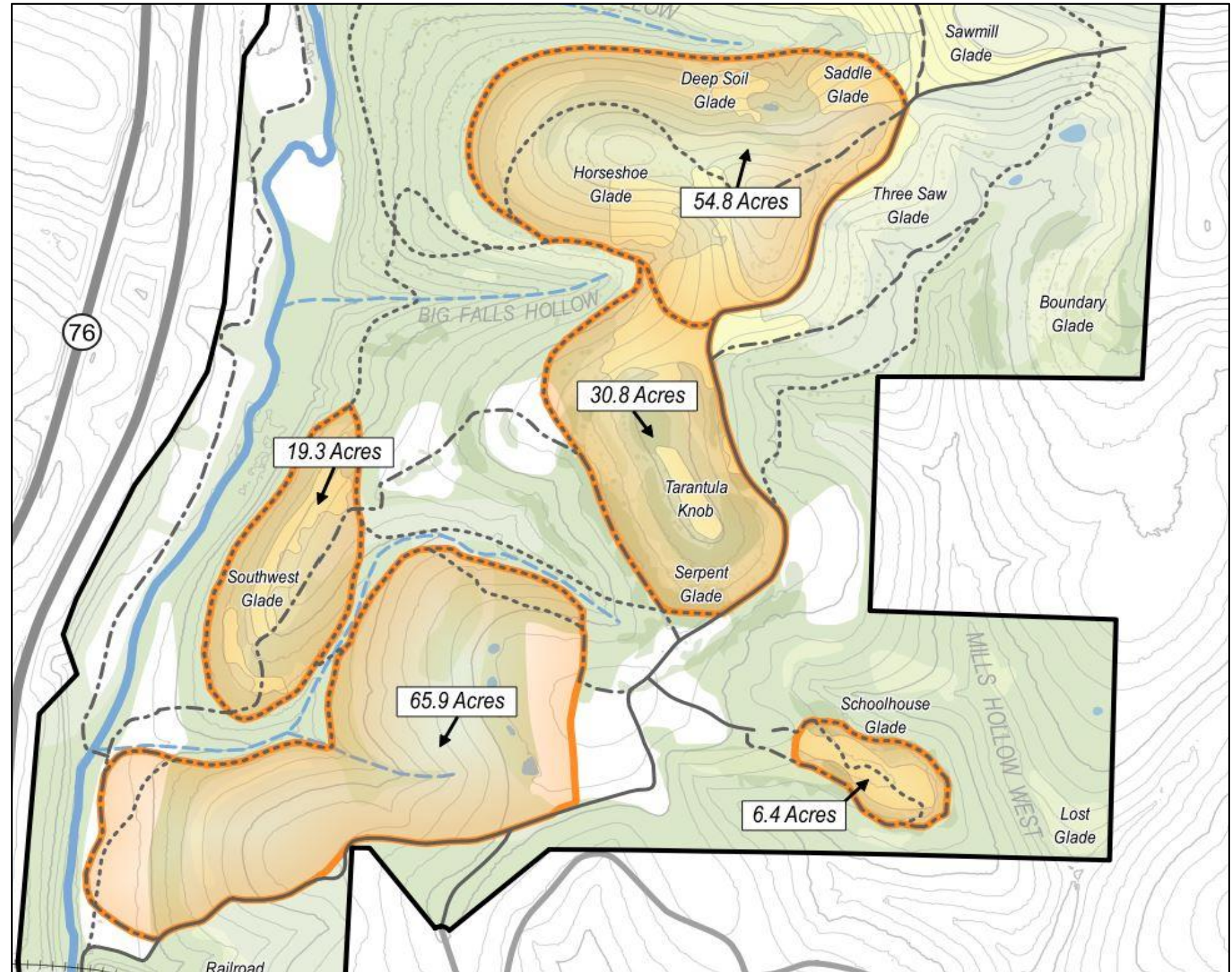
## 2023-2024 Prescribed Burn Habitat Response



# FIRELINES AND PRESCRIBED FIRE

## 2024-2025 Prescribed Burn Season

- **Southwest Glade Unit**  
19.3 Acres, 0.77 mi.
- **Central Knobs Unit**  
85.6 Acres, 2.15 mi.
- **Jones Farmstead Unit** (NEW)  
65.9 Acres, 1.54 mi.
- **Schoolhouse Glade Unit** (NEW)  
6.40 Acres, 0.42 mi.



# PLANT, ANIMAL, AND HABITAT SURVEYS

## 2024 Research

- Collection and Preservation of Herbarium Specimens
  - 34 Species Collected in 2024

## 2025 Research (Planned)

- Collection and Preservation of Herbarium Specimens
  - Collect at Least 20 New Species in 2025
- Botanical Surveys in Long-Term Monitoring Plots Throughout the Park
- Bumble Bee Surveys Starting Spring 2025
- Collection and Preservation of Insectarium Specimens



# GLADE RESTORATION



## 2023-2024 Glade Restoration

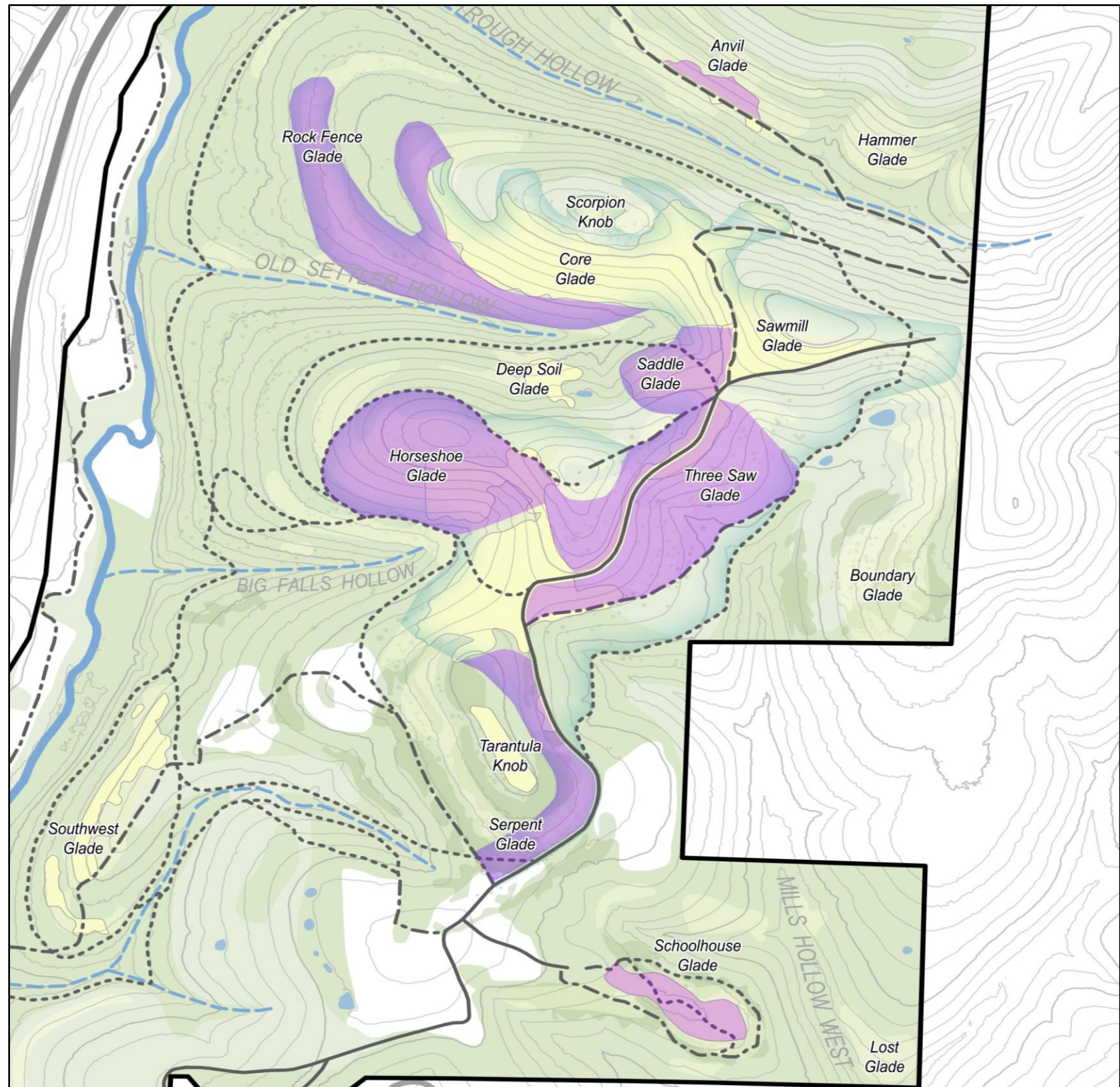
- Stewardship crew cleared approximately 5 acres of glade in Schoolhouse Glade and Core Glade.
- Removed large, dense stands of eastern red cedar trees in preparation of prescribed burning during the 2024-2025 burn season.



# GLADE RESTORATION

## Planned Glade Restoration 2024-2025

- Continued Expansion on Glade Communities in the Elk Ridge Glade Complex:
  - Anvil Glade
  - Rock Fence Glade
  - Core Glade
  - Saddle Glade
  - Horseshoe Glade
  - Three Saw Glade
  - Serpent Glade
  - Schoolhouse Glade





# PARTNERSHIP WITH AMERICORPS

## Background

- Federal Conservation and Disaster Relief Work Crew (FEMA)
- Successor for the Civilian Conservation Corps (CCC)

## National Civilian Conservation Corps (NCCC) Division

- Volunteer group of 8-12, 18–24-year-olds
- 5 crews in the past, between 2019 and 2021
- Plan to host a new team from January-April 2025 to assist with Firelines Construction, Prescribed Burning, Glade Restoration, and Trail Construction



## St. Louis Division

- Specialized and local division of AmeriCorps based out of St. Louis, MO.
- Group of 5, typically 20–30-year-olds, working 10-day work periods.
- Have assisted the park in the past with Fireline Construction, Prescribed Burning, and Glade Restoration
- Plan to host 1-2 groups in Spring 2025



# THANK YOU!



[mostateparks.com](http://mostateparks.com)