

United States Department of the Interior
National Park Service

National Register of Historic Places
Registration Form

This form is for use in nominating or requesting determinations for individual properties and districts. See instructions in *How to Complete the National Register of Historic Places Registration Form* (National Register Bulletin 16A). Complete each item by marking "x" in the appropriate box or by entering the information requested. If an item does not apply to the property being documented, enter "N/A" for "not applicable." For functions, architectural classification, materials, and areas of significance, enter only categories and subcategories from the instructions. Place additional entries and narrative items on continuation sheets (NPS Form 10-900a). Use a typewriter, word processor, or computer, to complete all items.

1. Name of Property

historic name Schroer, J.F., House-store

other names/site number N/A

2. Location

street & number 252 Lower Street not for publication

city or town Augusta vicinity

state Missouri code MO county St. Charles code 183 zip code 63332

3. State/Federal Agency Certification

As the designated authority under the National Historic Preservation Act, as amended, I hereby certify that this nomination request for determination of eligibility meets the documentation standards for registering properties in the National Register of Historic Places and meets the procedural and professional requirements set forth in 36 CFR Part 60. In my opinion, the property meets does not meet the National Register criteria. I recommend that this property be considered significant nationally statewide locally. (See continuation sheet for additional comments.)

Claire F. Blackwell
Signature of certifying official/Title Deputy SPO
Missouri Department of Natural Resources

7 December 1954
Date

State of Federal agency and bureau

In my opinion, the property meets does not meet the National Register criteria. (See continuation sheet for additional comments.)

Signature of certifying official/Title

Date

State or Federal agency and bureau

4. National Park Service Certification

I hereby certify that the property is:

Signature of the Keeper

Date of Action

- entered in the National Register. See continuation sheet.
- determined eligible for the National Register See continuation sheet.
- determined not eligible for the National Register.
- removed from the National Register.
- other, (explain): _____

_____	_____
_____	_____
_____	_____

Schroer, J.F., House-store

St. Charles Co., MO

Name of Property

County and State

5. Classification

Ownership of Property

(Check as many boxes as apply)

- private
- public-local
- public-State
- public-Federal

Category of Property

(Check only one box)

- building(s)
- district
- site
- structure
- object

Number of Resources within Property

(Do not include previously listed resources in the count.)

Contributing	Noncontributing	
1	0	buildings
		sites
		structures
		objects
1	0	Total

Name of related multiple property listing

(Enter "N/A" if property is not part of a multiple property listing.)

Historic Resources of Augusta, MO

Number of contributing resources previously listed in the National Register

0

6. Function or Use

Historic Functions

(Enter categories from instructions)

DOMESTIC/single dwelling

COMMERCE/department store

Current Functions

(Enter categories from instructions)

DOMESTIC/single dwelling

7. Description

Architectural Classification

(Enter categories from instructions)

no style

Materials

(Enter categories from instructions)

foundation stone

walls brick

roof metal

other wood

Narrative Description

(Describe the historic and current condition of the property on one or more continuation sheets.)

Schroer, J.F., House-store

St. Charles Co., MO

Name of Property

County and State

8. Statement of Significance

Applicable National Register Criteria

(Mark "x" in one or more boxes for the criteria qualifying the property for National Register listing.)

- Criteria A, B, C, D with checkboxes and descriptions of significance criteria.

Criteria Considerations

(Mark "x" in all the boxes that apply.)

Property is:

- Criteria A through G with checkboxes and descriptions of property types.

Areas of Significance

(Enter categories from instructions)

ETHNIC HERITAGE: EUROPEAN ARCHITECTURE

Period of Significance

ca. 1865-1866

Significant Dates

ca. 1865-1866

Significant Person

(Complete if Criterion B is marked above)

n/a

Cultural Affiliation

n/a

Architect/Builder

unknown

Narrative Statement of Significance

(Explain the significance of the property on one or more continuation sheets.)

9. Major Bibliographical References

Bibliography

(Cite the books, articles, and other sources used in preparing this form on one or more continuation sheets.)

Previous documentation on file (NPS):

- Checkboxes for previous documentation on file (NPS).

Primary location of additional data:

- Checkboxes for primary location of additional data.

Name of repository:

Schroer, J.F., House-store

St. Charles Co., MO
County and State

Name of Property

10. Geographical Data

Acreage of Property less than 1 acre

UTM References

(Place additional UTM references on a continuation sheet.)

1	15	684570	4271260
Zone	Easting	Northing	
2			

3			
Zone	Easting	Northing	
4			

See continuation sheet

Verbal Boundary Description

(Describe the boundaries of the property on a continuation sheet.)

Boundary Justification

(Explain why the boundaries were selected on a continuation sheet.)

11. Form Prepared By

name/title Mary M. Stiritz

organization _____ date 5 January 1993

street & number 12 Wydown Terrace telephone 314-721 6289

city or town St. Louis state MO zip code 63105

Additional Documentation

Submit the following items with the completed form:

Continuation Sheets

Maps

A USGS map (7.5 or 15 minute series) indicating the property's location.

A Sketch map for historic districts and properties having large acreage or numerous resources.

Photographs

Representative black and white photographs of the property.

Additional Items

(Check with the SHPO or FPO for any additional items)

Property Owner

(Complete this item at the request of SHPO or FPO.)

name Charles & Wesley Harwood

street & number P.O. Box 26 telephone _____

city or town Augusta state MO zip code 63332

Paperwork Reduction Act Statement: This information is being collected for applications to the National Register of Historic Places to nominate properties for listing or determine eligibility for listing, to list properties, and to amend existing listings. Response to this request is required to obtain a benefit in accordance with the National Historic Preservation Act, as amended (16 U.S.C. 470 et seq.).

Estimated Burden Statement: Public reporting burden for this form is estimated to average 18.1 hours per response including time for reviewing instructions, gathering and maintaining data, and completing and reviewing the form. Direct comments regarding this burden estimate or any aspect of this form to the Chief Administrative Services Division, National Park Service, Washington, DC 20540.

United States Department of the Interior
National Park Service

National Register of Historic Places
Continuation Sheet

Section number 7 Page 1

Schroer, J.F., House-store
Augusta, St. Charles Co., MO
Historic Resources of Augusta, MO MPS

The J.F.Schroer House-store is a ca.1865-66 brick 2 1/2 story building (Property Type: Vernacular Residence, subtype:house-store) located at 252 Lower Street in Augusta, Missouri. Features of its property type include a sparsely detailed exterior exhibiting jack arches and dentils; traditional central passage plan; wine cellar; and combination commercial first story and residential second story characteristic of the house-store subtype. Minor alterations to the house do not detract from its overall integrity of design and materials.

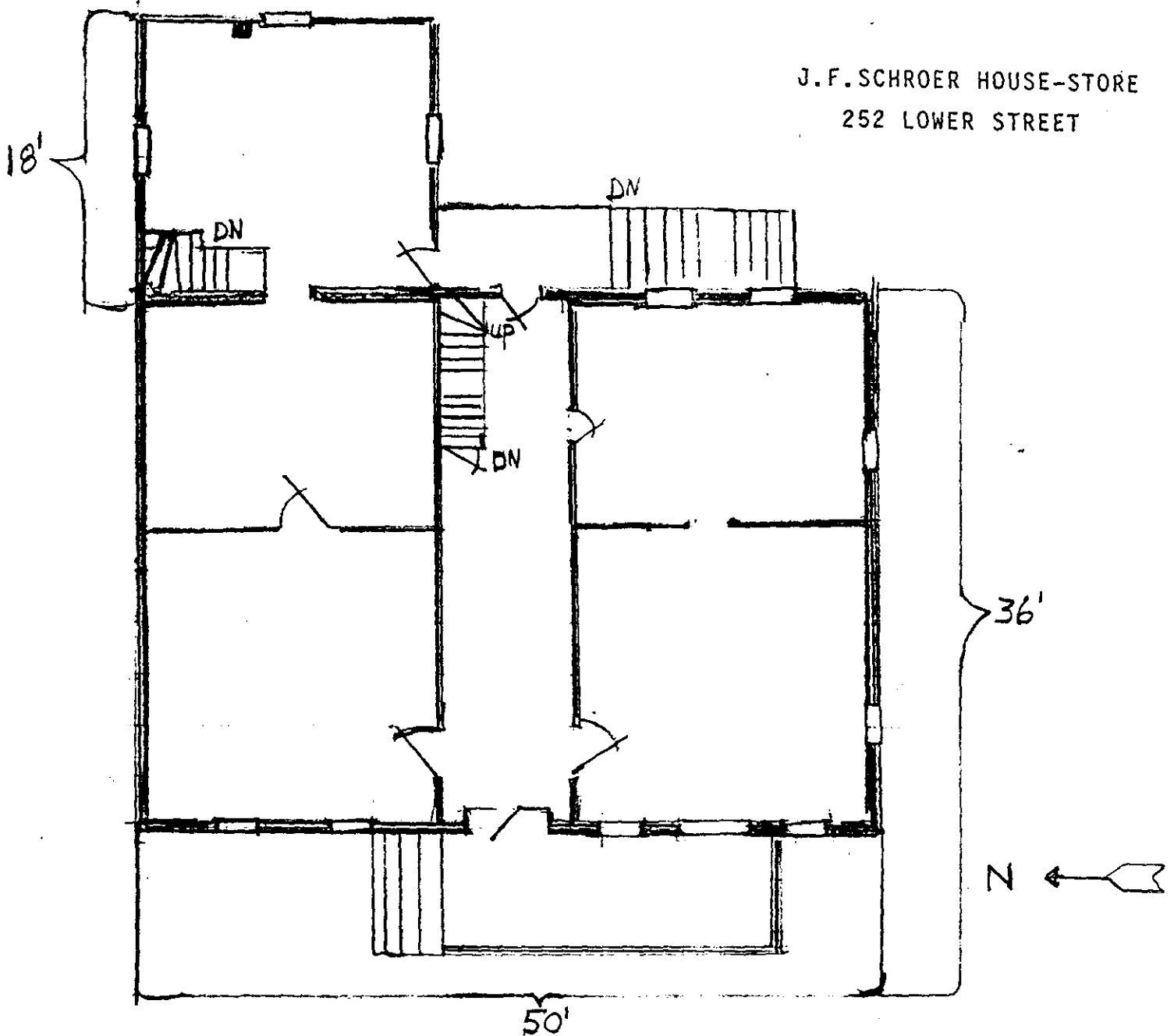
Measuring approximately 50 feet wide by 36 feet deep, (with a small historic addition at the rear) the five-bay house-store rests on a stone foundation. The side-gabled roof is sheathed with tin and features paired parapeted chimneys on the gable ends. Brick dentils and corbel bands form cornices on the primary (west) and rear elevations. Windows are headed with flat arches and installed with double-hung sash with 6/6 lights. The building was constructed in two stages: north and south sections are joined by a nine-foot wide center hall entered on the primary facade through a round-arched recessed doorway. The first floor of the south section (Photo #1-right) originally was a store entered through a wide doorway (now boarded-up) which is protected by a canopy sheathed with metal; on the interior, the front storeroom features a tin ceiling intact, and a trap door leading to the basement. Boxed stairs in the hall lead up to the second story and down to the wine cellar which features stone walls and an exposed joist ceiling. Entrance to the cellar is gained through a double door on the south elevation.

United States Department of the Interior
National Park Service

National Register of Historic Places Continuation Sheet

Section number 7 Page 2

Schroer, J.F., House-store
Augusta, St. Charles Co., MO
Historic Resources of Augusta, MO MPS



United States Department of the Interior
National Park ServiceNational Register of Historic Places
Continuation SheetSection number 8 Page 3Schroer, J.F., House-store
Augusta, St.Charles Co., MO
Historic Resources of Augusta, MO MPS

The J.F.Schroer House-store is eligible for listing in the National Register according to Criteria A and C, and is significant in the following areas: ARCHITECTURE: The ca.1865-66 house-store is one of only a few large early brick buildings erected in Augusta, and is a noteworthy, well-preserved example of Property Type: Vernacular Residence, subtype: house-store, distinguished by the quality of its materials, workmanship and vernacular design which includes a wine cellar.(See Historic Context,"German American Culture in Augusta, 1833-1944" and subtheme, "Architecture ca.1836-1943". ETHNIC HERITAGE: EUROPEAN: The home and workplace of a German American vintner, the building is closely associated with Augusta's wine industry, one of the primary culture-defining characteristics of the German community. (See Historic Context subtheme, "Wine Industry ca.1850-1917").

Johann Friedrich Schroer was born in Missouri ca.1834, the son of Johann Heinrich Schroer, one of the first emigrants from Tecklenburg, Germany who settled in St.Charles County. In the 1860 census Johann Friedrich's occupation was listed as a merchant; he reported real estate valued at \$2000 and personal property totaling \$4025. Schroer purchased the irregular-sized lot on Lower Street in 1865-66 where he apparently constructed the brick house-store in two stages: the south half (probably built first) served as a store on the first floor with living quarters above; the north half appears to have been exclusively residential. In 1867, The St.Charles Demokrat reported that business was flourishing in Schroer's new store which he operated with John H.Dieckmann.(1) The completed building exhibited traditional Missouri German design elements in its planar, sparsely detailed walls articulated with jack arches and a simple cornice of dentils and corbeled brick. In 1870, the year of his death, census data showed Schroer was occupied as a gardener, living with his Prussian-born wife, Mena,36, and three Missouri-born children.

Schroer's involvement in Augusta's wine industry is confirmed by the presence of a wine cellar under the house, and by reports of the 1868 State census in which his wine product totaled 265 gallons; the Probate Court sale of 87 gallons of wine offers additional evidence. In 1875-76, the two halves of Schroer's building were sold in separate transactions to Hermann Limberg, a 50-year old Prussian-born innkeeper in the 1870 census. Although Limberg died in 1884, his widow, Marie, a native of Prussia, was renting the wine cellar as late as 1902 to neighbor Dr.C.L.Gerling for wine storage.

United States Department of the Interior
National Park Service

National Register of Historic Places
Continuation Sheet

Section number 8.9.10 Page 4

Schroer, J.F., House-store
Augusta, St.Charles Co., MO
Historic Resources of Augusta, MO MPS

NOTES

1) St.Charles Democrat, 19 July 1867; 24 October 1867, quoted in Anita M. Mallinckrodt, Historic Augusta, Its Buildings and People 1820-1900, (Augusta, MO: Augusta Historical Society, 1994),p.54.

9. Major Bibliographical References:

Mallinckrodt, Anita M. Historic Augusta, MO. Augusta, MO: Augusta Historical Society, 1994.

(See Section I of the Multiple Property Document, "Historic Resources of Augusta, Missouri" for additional references.

10. Geographical Data:

Verbal Boundary Description:

Boundaries are indicated by the heavy broken line on the map entitled, "Architectural Survey of Augusta, Missouri", scale 1" = 100'.

Boundary Justification:

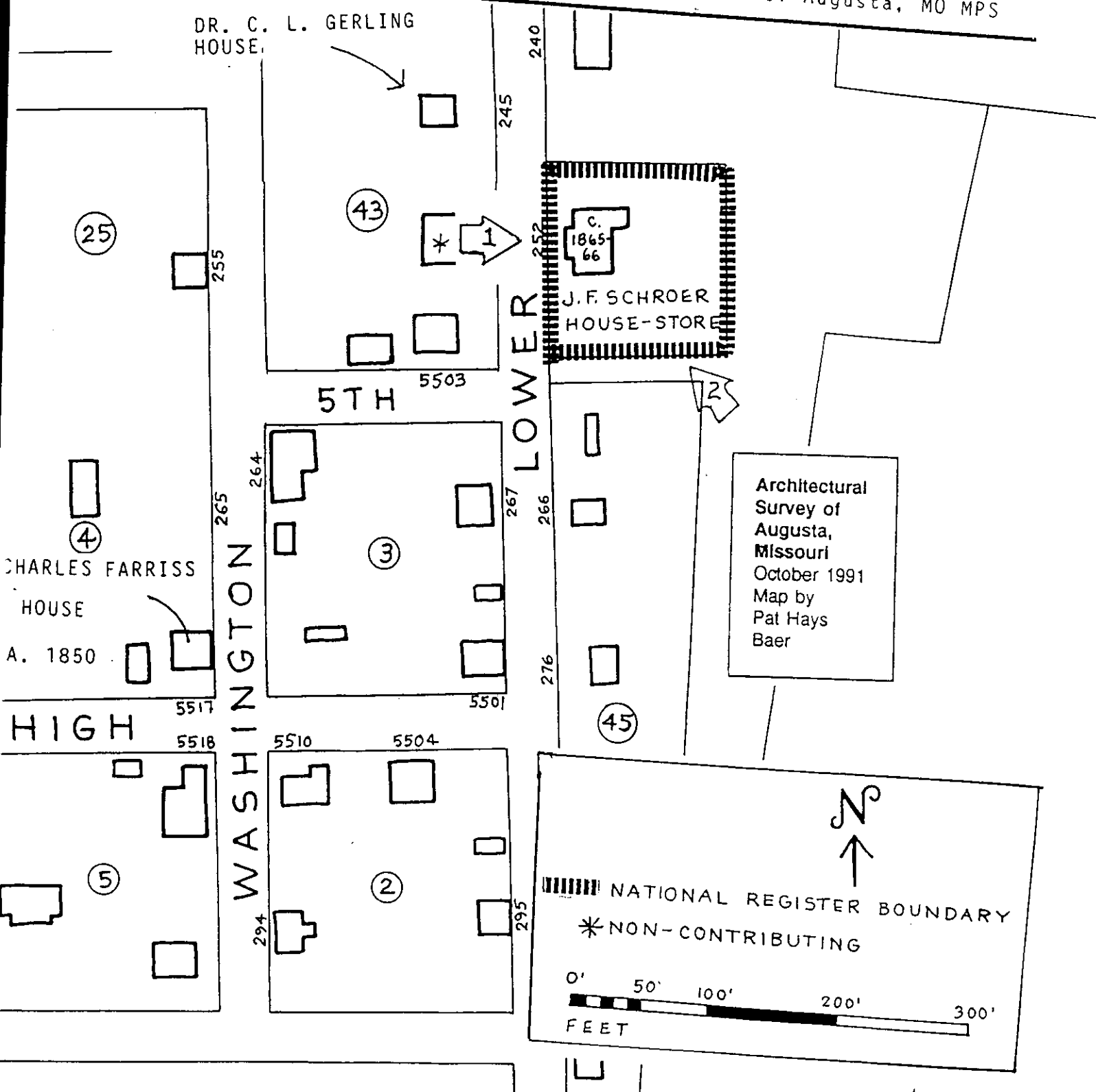
The nominated property includes all of the land that historically has been associated with it.

United States Department of the Interior
National Park Service

National Register of Historic Places
Continuation Sheet

Section number 10 Page 5

Schroer, J.F., House-store
Augusta, St. Charles Co., MO
Historic Resources of Augusta, MO MPS



DR. C. L. GERLING HOUSE

25

43

* 1

C. 1865-66

J.F. SCHROER HOUSE-STORE

5TH

LOWER

Architectural Survey of Augusta, Missouri October 1991 Map by Pat Hays Baer

CHARLES FARRISS HOUSE

A. 1850

HIGH

WASHINGTON

4

3

45

5

2

NATIONAL REGISTER BOUNDARY
*NON-CONTRIBUTING

0' 50' 100' 200' 300'
FEET



EWICH, ROBERT
FARMSTEAD
5336 HACKMAN ROAD
AUGUSTA, ST. CHARLES
COUNTY, MO
15/684865/4271540

AUGUSTA HARMONIE-YERBIN
NE CORNER HACKMAN +
CHURCH ROADS
AUGUSTA, ST. CHARLES COUNTY
MO
15/684770/4271600

GERLING, DR. CL., HOUSE
245 LOWER ST.
AUGUSTA, ST. CHARLES
COUNTY, MO
15/684500/4271290

SCHROER, J. F. HOUSE-STORE
252 LOWER ST.
AUGUSTA, ST. CHARLES COUNTY
MO
15/684570/4271260

FARRIS, CHARLES MCLEE
HOUSE
5517 HIGH ST.
AUGUSTA, ST. CHARLES
COUNTY, MO
15/684460/4271160

MINDRUP HOUSE-STORE
5543 WATER ST.
AUGUSTA, ST. CHARLES COUNTY
MO
15/684390/4271000

Historic Resources of Augusta Mps
ST. CHARLES COUNTY, MO



4274
4273
35'
16 MI. TO V.S. 20 & 61
4271
7881 III SE (LABADIE)
4269
4268
32'30"

MISSOURI - KANSAS - TEXAS

ST CHARLES CO
FRANKLIN CO

BOTTOM

Augusta

Bigelow Creek

Immaculate Conception Ch.

Christ Ch.

Cem.

Mile X
60

1
22

14

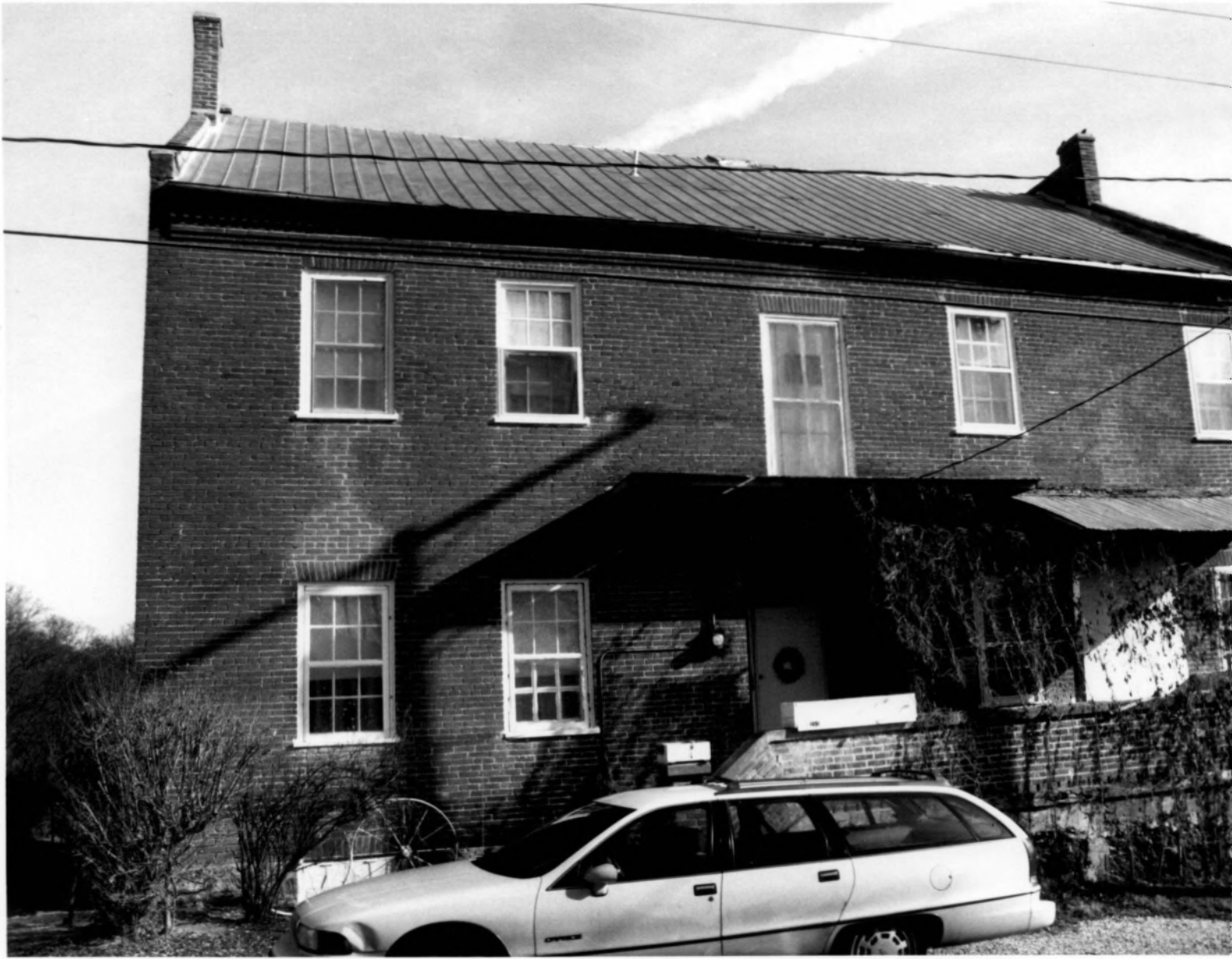
15

15

16

E O S A G E

- 1) J.F. SCHROER House-store
- 2) Augusta, St. Charles County, MO
- 3) MARY STIRITZ
- 4) Dec. 1993
- 5) MO Dept Natural Resources
- 6) West (primary) elev,
camera facing east
- 7) # 1



- 1) J. F. SCHROER House-store
- 2) Augusta, St. Charles County, MO
- 3) MARY STIRITZ
- 4) Dec. 1993
- 5) MO Dept. of Natural Resources
- 6) rear (east) + south elevations
CAMERA facing NW
- 7) # 2

+ 7/0 7/1.5



- 1) J. F. SCHROER HOUSE STORE
- 2) AUGUSTA, St. Charles County, Mo
- 3) MARY STIRITZ
- 4) MARCH 1994
- 5) MO DEPT. NATURAL RESOURCES
- 6) INTERIOR, 1ST FLOOR, SOUTH ROOM
- 7) #3

7-6



EXTRA
PHOTOS



Schrow House/Himling Hotel
after



Schrow House/Himling Hotel
after structural change



Schrow House/Himling Hotel
after



Schwarz House / Limburg
Historic Hotel
Roof changed