

United States Department of the Interior
National Park Service

National Register of Historic Places Registration Form

This form is for use in nominating or requesting determination for individual properties and districts. See instruction in *How to Complete the National Register of Historic Places Registration Form* (National Register Bulletin 16A). Complete each item by marking "x" in the appropriate box or by entering the information requested. If an item does not apply to the property being documented, enter "N/A" for "not applicable." For functions, architectural classification, materials and areas of significance, enter only categories and subcategories from the instructions. Place additional entries and narrative items on continuation sheets (NPS Form 10-900a). Use a typewriter, word processor, or computer, to complete all items.

1. Name of Property

historic name Santa Fe Trail (Saline County Trail Segments)
other names/site number Harvey Spring and Weinreich Ruts; NPS Master Plan #8

2. Location

street & number Saline County Road 416 (Rural Route 3) [N/A] not for publication
city or town Stanhope [X] vicinity
state Missouri code MO county Saline code 195 zip code 65340

3. State/Federal Agency Certification

As the designated authority under the National Historic Preservation Act, as amended, I hereby certify that this nomination request for determination of eligibility meets the documentation standards for registering properties in the National Register of Historic Places and meets the procedural and professional requirements set forth in 36 CFR Part 60. In my opinion, the property meets does not meet the National Register criteria. I recommend that this property be considered significant nationally statewide locally.
(See continuation sheet for additional comments [])

Claire F. Blackwell 10 March 1994
Signature of certifying official/Title Claire F. Blackwell, Deputy SHPO Date
Missouri Department of Natural Resources
State or Federal agency and bureau

In my opinion, the property meets does not meet the National Register criteria.
(See continuation sheet for additional comments [])

Signature of certifying official/Title Date

State or Federal agency and bureau

4. National Park Service Certification

I hereby certify that the property is:

	Signature of the Keeper	Date
<input type="checkbox"/> entered in the National Register See continuation sheet [] .	_____	_____
<input type="checkbox"/> determined eligible for the National Register See continuation sheet [] .	_____	_____
<input type="checkbox"/> determined not eligible for the National Register.	_____	_____
<input type="checkbox"/> removed from the National Register	_____	_____
<input type="checkbox"/> other, explain See continuation sheet [] .	_____	_____

Santa Fe Trail
(Saline County...)
Name of Property

Saline Co., MO
County/State

Historic Resources of the Santa Fe Trail
Multiple Property Submission

5. Classification

Ownership of Property
(Check as many boxes as apply)

- private
- public-local
- public-State
- public-Federal

Category of Property
(Check only one box)

- building(s)
- district
- site
- structure
- object

Number of Resources within Property
(Do not count previously listed resources.)

Contributing	Noncontributing	
0	0	buildings
4	0	sites
0	0	structures
0	0	objects
4	0	Total

Name of related multiple property listing.
(Enter "N/A" if property is not part of a multiple property listing.)

Historic Resources of the Santa Fe Trail

Number of contributing resources
previously listed in the National
Register.

N/A

6. Function or Use

Historic Function
(Enter categories from instructions)

TRANSPORTATION/road-related

Current Functions
(Enter categories from instructions)

AGRICULTURE/SUBSISTENCE/
agricultural field

7. Description

Architectural Classification
(Enter categories from instructions)

N/A

Materials
(Enter categories from instructions)

foundation N/A
walls N/A

roof N/A
other N/A

Narrative Description

(Describe the historic and current condition of the property on one or more continuation sheets.)

Santa Fe Trail

(Saline County...)

Saline Co., MO

Historic Resources of the Santa Fe Trail

Name of Property

County/State

Multiple Property Submission

8. Statement of Significance

Applicable National Register Criteria

(Mark "x" in one or more boxes for the criteria qualifying the property for National Register listing.)

A Property is associated with events that have made a significant contribution to the broad patterns of our history

B Property is associated with the lives of persons significant in our past.

C Property embodies the distinctive characteristics of a type, period, or method of construction or represents the work of a master, or possesses high artistic values, or represents a significant and distinguishable entity whose components lack individual distinction.

D Property has yielded, or is likely to yield, information important in prehistory or history.

Criteria Considerations

(Mark "x" in all the boxes that apply.)

Property is:

A owned by a religious institution or used for religious purposes.

B removed from its original location.

C a birthplace or grave.

D a cemetery.

E a reconstructed building, object, or structure.

F a commemorative property.

G less than 50 years of age or achieved significance within the past 50 years.

Narrative Statement of Significance

(Explain the significance of the property on one or more continuation sheets.)

9. Major Bibliographic References

Bibliography

(Cite the books, articles and other sources used in preparing this form on one or more continuation sheets.)

Previous documentation on file (NPS):

preliminary determination of individual listing (36 CFR 67) has been requested

previously listed in the National Register

previously determined eligible by the National Register

designated a National Historic Landmark

recorded by Historic American Buildings Survey

recorded by Historic American Engineering Record

Areas of Significance

(Enter categories from instructions)

Commerce

Transportation

Periods of Significance

1821 - 1827

Significant Dates

N/A

Significant Person(s)

(Complete if Criterion B is marked above).

N/A

Cultural Affiliation

N/A

Architect/Builder

N/A

Primary location of additional data:

State Historic Preservation Office

Other State Agency

Federal Agency

Local Government

University

Other:

Name of repository:

National Park Service Regional Office--
Santa Fe, New Mexico

Santa Fe Trail
(Saline County...)
Name of Property

Saline Co., MO
County/State

Historic Resources of the Santa Fe Trail
Multiple Property Submission

10. Geographical Data

Acreage of Property 11 acres

UTM References

(Place additional UTM references on a continuation sheet.)

A. Zone 15 479050 4337520
Easting Northing

B. Zone 15 479340 4337520
Easting Northing

C. Zone 15 479560 4337420
Easting Northing

D. Zone 15 479540 4337380
Easting Northing

[X] See continuation sheet

Verbal Boundary Description

(Describe the boundaries of the property on a continuation sheet.)

Boundary Justification

(Explain why the boundaries were selected on a continuation sheet.)

11. Form Prepared By

name/title See Continuation Sheet, section 11

organization The URBANA Group date May 1993

street & number 202 South Broadway, Suite 206, P.O. Box 1028 telephone (217) 344-7526

city or town Urbana state IL zip code 61801-9028

Additional Documentation

Submit the following items with the completed form:

Continuation Sheets

Maps

A USGS map (7.5 or 15 minute series) indicating the property's location.

A Sketch map for historic districts and properties having large acreage or numerous resources.

Photographs

Representative black and white photographs of the property.

Additional Items

(Check with the SHPO or FPO for any additional items)

Property Owner

(Complete this item at the request of SHPO or FPO.)

name _____

street & number _____ telephone _____

city or town _____ state _____ zip code _____

Paperwork Reduction Act Statement: This information is being collected for applications to the National Register of Historic Places to nominate properties for listing or determine eligibility for listing, to list properties, and to amend existing listings. Response to this request is required to obtain a benefit in accordance with the National Historic Preservation Act, as amended (16 U.S.C. 470 et seq.).

Estimated Burden Statement: Public reporting burden for this form is estimated to average 18.1 hours per response including time for reviewing instructions, gathering and maintaining data, and completing and reviewing the form. Direct comments regarding this burden estimate or any aspect of this form to the Chief, Administrative Services Division, National Park Service, P.O. Box 37127, Washington, DC; and the Office of Management and Budget, Paperwork Reductions Projects (1024-0018), Washington, DC 20503.

**United States Department of the Interior
National Park Service**

**National Register of Historic Places
Continuation Sheet**

**Santa Fe Trail (Saline County Trail Segments); Saline Co., MO;
Historic Resources of the Santa Fe Trail, 1821-1880
Section number 7**

Page 1

Narrative Description

This nomination effort focuses exclusively on the Santa Fe Trail (Saline County Trail Segments) which are located approximately five miles north of Marshall, Missouri on a local farmstead. The Weinrich farm is on Saline County Road 416, approximately one and one-half miles east of the hamlet of Stanhope. This site contains four contributing resources in the form of four Trail segments.

Before 1821 this part of the Santa Fe Trail was known as the Osage Trace, in part in reference to Fort Osage (1808-1827). This rutted segment represents a remnant portion of the Trace, most of which has disappeared due to erosion and modern farming practices. Among the physical features of the site are the ruts, fallow fields, and a heavily vegetated hillslope. The site is found within the currently fallow agricultural fields, and on the descending northwestward oriented hillslope. The fallow fields retain rutted segments, though the sides of the ruts have been smoothed by previous plowing. Both through the fallow agricultural fields and down the hillslope four ruts are evident. The ruts descend the slope toward a small southwestward trending tributary stream of the Salt Fork River. For a little under 1300' (400 meters) the ruts run through the fields and down approximately 100' (30 meters) in elevation to the tributary drainage bottom. From this point they are not observable; an improved gravel road (Saline County Road #417) was constructed over the Trail.

The wooded hillslope is not cultivated, and has, therefore, preserved the ruts. Dense foliage has aided in the preservation of the ruts by holding soil erosion in check. Immediately east of the stand of trees, agricultural plowing, cut-and-fill and other activities have obscured, though certainly not obliterated, the rutted segments. The ruts within this field still retain sufficient visual quality to be readily identifiable to the observer as rutted segments. Integrity of location, partial aspects of setting, and feeling and association are retained on this site. The fact that so few tangible remains of this historic roadway exist in the local area strengthens the case for these remains being eligible. The well-preserved area of the ruts is used for sheltering yearling cattle. The minimal impacts of this activity help to preserve the remaining features of the site.

**United States Department of the Interior
National Park Service**

**National Register of Historic Places
Continuation Sheet**

**Santa Fe Trail (Saline County Trail Segments); Saline Co., MO;
Historic Resources of the Santa Fe Trail, 1821-1880
Section number 8**

Page 2

Narrative Statement of Significance

Summary

The Santa Fe Trail (Saline County Trail Segments) site is eligible for the National Register under Criterion A as a reflection of historically-significant Trail traffic and meets the criterion within the areas of commerce and transportation. The property fulfills the requirements of the Historic Trail property type and Commercial Trail sub-type detailed within Section F of the Historic Resources of the Santa Fe Trail, 1821-1880 Multiple Property Documentation Form. The site's period of Trail significance begins with the use of this portion of the Trail by trade caravans in 1821-1822 and ends with the closure of Fort Osage in 1827. The ruts retain integrity in location, setting, feeling and association and bear witness to the Trail's importance in trans-Mississippi commerce and transportation in the late antebellum period. Thus, they materially reflect important historic events outlined in the historic context: International Trade on the Mexican Road, 1821-1846. Very few rutted segments in the local area vie with the environmental quality and high preservation values of these ruts.

History: Commerce and Transportation

This section of the Santa Fe Trail was used from its earliest days, its transportation pathway first established for trade by the first trade caravans of 1821-22. This small Trail segment is tied to the development of the Trail as an important international commercial trade route in the Trans-Mississippi West. This eastward extension of the Santa Fe Trail was significant in the early years of the Trail, primarily between 1821 through the closing of nearby Fort Osage in 1827. After the closing of the Fort the bulk of the Trail traffic shifted westward as Independence, Westport and Fort Leavenworth became much more significant eastern termini for the Trail. Eventually the Trail ruts were subsumed into the existing agricultural operation.

The ruts of this segment are not only associated with the Santa Fe Trail, but they are also part of a route referred to as the Osage Trace. The historic Osage Trace ran from Franklin, and later Arrow Rock, to Fort Osage, Missouri. Few tangible remains of this road exist, erosion and agricultural production having erased most Trail traces. These ruts are linked to the nearby Grand Pass ruts, approximately 10 miles west. The Osage Trace was incorporated into the longer Santa Fe Trail route after 1821. The potential additional significance of the Osage Trace is not part of this registration effort.

The ruts within this field still retain sufficient visual quality to be readily identifiable to the observer as rutted segments. Integrity of location, partial aspects of setting, and feeling and association are retained on this site. The fact that so few tangible remains of this historic roadway exist in the local area strengthens the case for these remains being eligible. Despite the impact of modern farming, the trail ruts are being nominated for their association with Santa

**United States Department of the Interior
National Park Service**

**National Register of Historic Places
Continuation Sheet**

**Santa Fe Trail (Saline County Trail Segments); Saline Co., MO;
Historic Resources of the Santa Fe Trail, 1821-1880
Section number 8**

Page 3

Fe Trail traffic, as a tangible reminder of the approximately seven year period this part of the Trail was linked to a wider international trade between neighboring republics.

United States Department of the Interior
National Park Service

National Register of Historic Places
Continuation Sheet

**Santa Fe Trail (Saline County Trail Segments); Saline Co., MO;
Historic Resources of the Santa Fe Trail, 1821-1880**

Section number 9

Page 4

Bibliography

United States Department of the Interior/National Park Service. Santa Fe National Historic Trail: Comprehensive Management and Use Plan. Washington, D.C.: U.S. Government Printing Office, 1990.

**United States Department of the Interior
National Park Service**

**National Register of Historic Places
Continuation Sheet**

**Santa Fe Trail (Saline County Trail Segments); Saline Co., MO;
Historic Resources of the Santa Fe Trail, 1821-1880**
Section number 10

Page 5

UTM References

E	15	479360	4337380
F	15	479050	4337460

Verbal Boundary Description

The site is bounded by six-sided polygon whose vertices are marked by the following UTM reference points:

A	15	479050	4337520
B	15	479340	4337520
C	15	479560	4337420
D	15	479540	4337380
E	15	479360	4337380
F	15	479050	4337460.

Boundary Justification

The boundaries of the site enclose an eleven acre parcel of land. This parcel incorporates only the rutted segments and their immediate environs, and was formed only to encompass the historically-significant Trail resources. The boundaries here include a northwesterly oriented hillslope lying above the stream tributary of the Salt Fork River, the latter being about .9 miles southwest of the site. The Trail remains here are incorporated into an operating farmstead. The UTM points in the description are based on the U.S.G.S. Marshall North (MO) 7.5' quadrangle. The parcel selected for boundaries is set upon regular points and incorporates important topographic features paralleling the Trail, particularly the woods on the northwesterly exposed hillslope and stream bottom. The use of a portion of the Saline County Road 416 (Rural Route 3) margin as a boundary, contained within this nomination, presupposes the exclusion of the road's current publicly-designated right-of-way.

**United States Department of the Interior
National Park Service**

**National Register of Historic Places
Continuation Sheet**

**Santa Fe Trail (Saline County Trail Segments); Saline Co., MO;
Historic Resources of the Santa Fe Trail, 1821-1880
Section number 11**

Page 6

Form Prepared By

For The URBANA Group:

Hugh Davidson/Technical Advisor
Writer

Archaeological Survey, University of Missouri-St. Louis
Colleen Hamilton and Brad Mueller/Historic Archaeologists
Field Work

Susan Enscore/Historical Geographer
Alice Edwards/Vice President; Preservation Planner
Joseph Gallagher/Cultural Geographer
Editors

United States Department of the Interior
National Park Service

RECEIVED
FEB 21 1995
NPP&P DO

National Register of Historic Places Continuation Sheet

Section number _____ Page _____

27

SUPPLEMENTARY LISTING RECORD

NRIS Reference Number: 94000615

Date Listed: 6/30/94

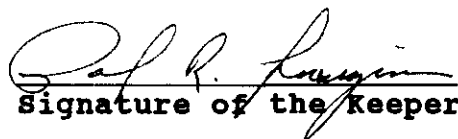
Santa Fe Trail
Saline County Trail Segments
Property Name

Saline
County

MO
State

Historic Resources of the Santa Fe Trail, 1821-1880
Multiple Name

This property is listed in the National Register of Historic Places in accordance with the attached nomination documentation subject to the following exceptions, exclusions, or amendments, notwithstanding the National Park Service certification included in the nomination documentation.


Signature of the Keeper

11/3/94
Date of Action

=====
Amended Items in Nomination:

Level of Significance:

The appropriate level of significance is National.
[No selection was provided by the SHPO.]

Classification:

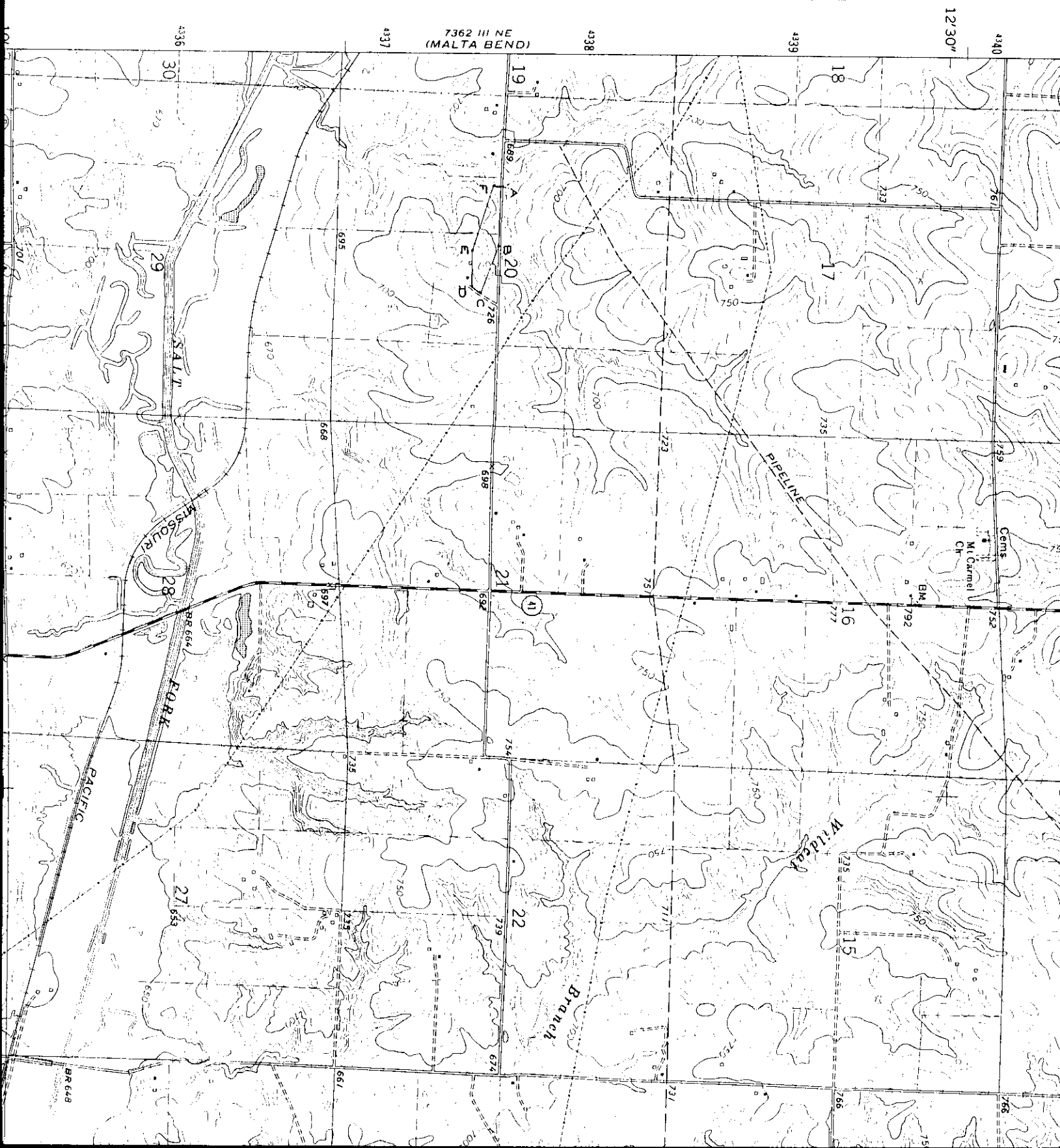
The proper category for this property is Site.
[A continuous site is best categorized as a single unit regardless of its size or complexity. This has been the approach taken with other historic trail segments.]

This information has been confirmed with the MO SHPO staff.

DISTRIBUTION:

National Register property file
Nominating Authority (without nomination attachment)

MARSHALL NORTH, MO
QUADRANGLE



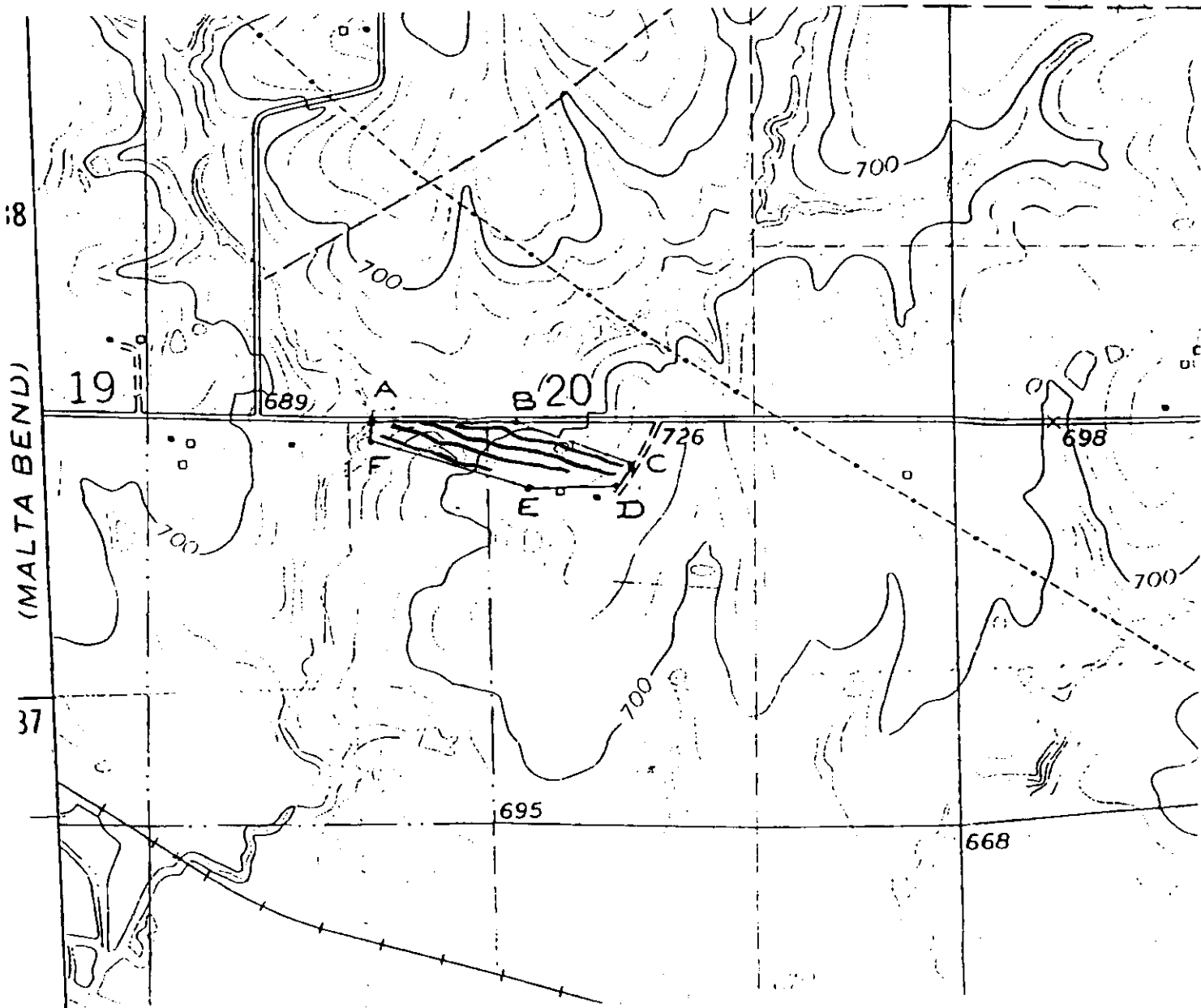
NPS Form 10-900-a
(8-86)

United States Department of the Interior
National Park Service

National Register of Historic Places Continuation Sheet

Section number _____ Page _____

Sketch Map (not to scale)



NPS # 8

6/19

Santa Fe Trail (Saline County Trail Segments)
Saline, MO

C. Hamilton; 7/91

negs.: NM / SHPO

looking west; ruts in vegetated hill slope

photo 1/3

NPS # 8

6/22

Santa Fe Trail
(Saline County Trail Segments)

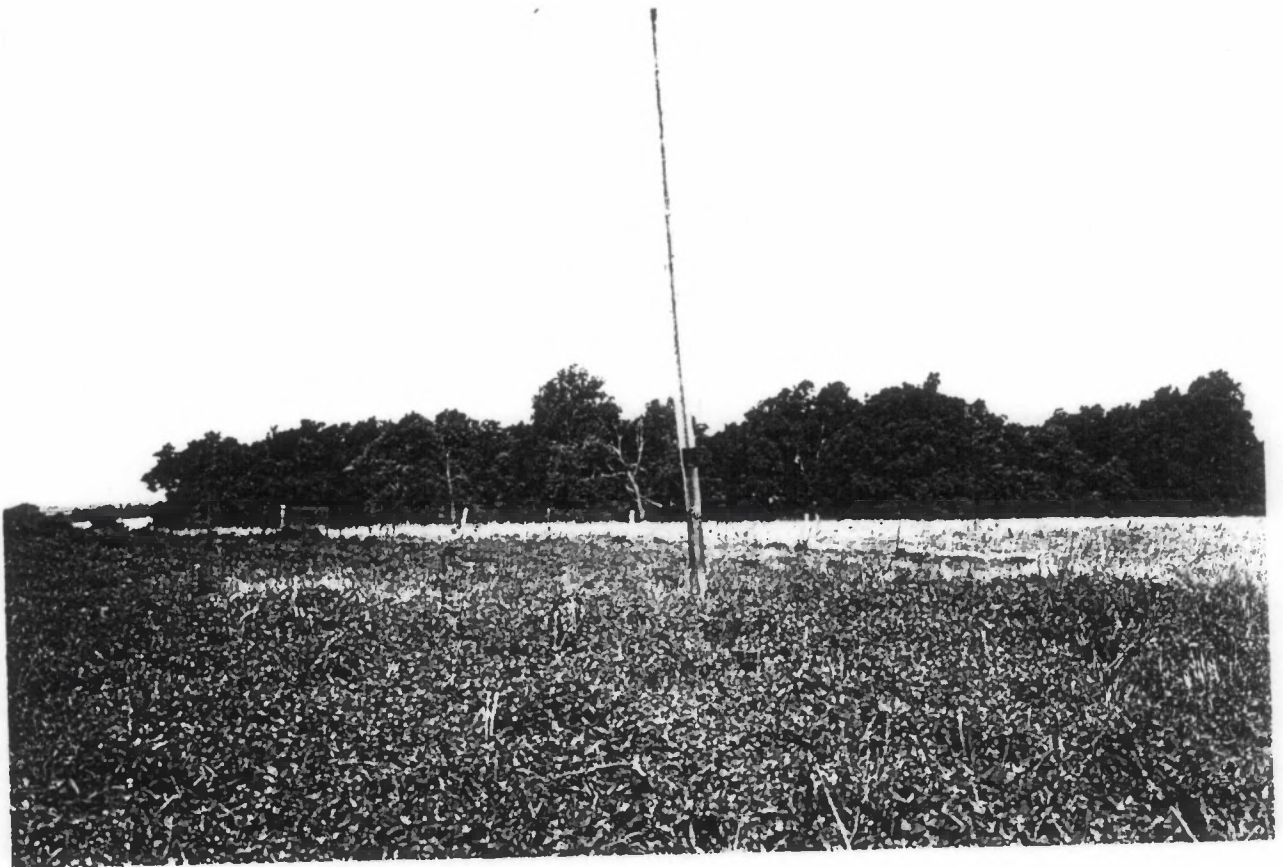
Saline, MO

C. Hamilton; 7/91

negs.: NM / SHPO

looking W. toward - 2000 sq. fields with
rutted segments which continue into
wooded hill slope

photo # 2/3



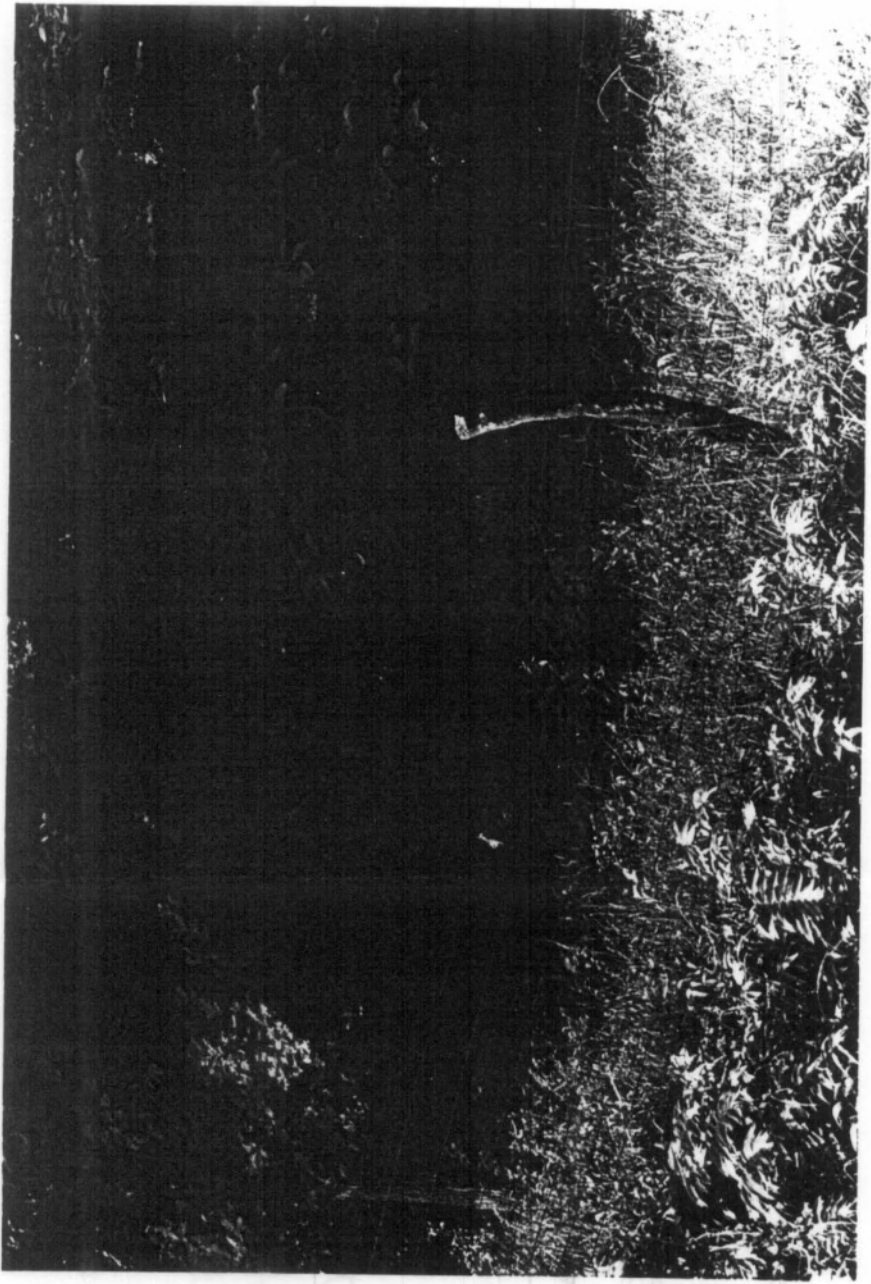
A #8 # 8
6/24

Santa-Fe Trail
(Saline County Trail Segments)
Saline, MO
C. Hamilton; 7/91

negs.: NM / SHPO

looking south. edge of fields and woods
where rutted segments continue

photo #3/3



1952 5 12 19 20