

United States Department of the Interior
National Park Service

NATIONAL REGISTER OF HISTORIC PLACES
REGISTRATION FORM

This form is for use in nominating or requesting determinations for individual properties and districts. See instructions in How to Complete the National Register of Historic Places Registration Form (National Register Bulletin 16A). Complete each item by marking "x" in the appropriate box or by entering the information requested. If any item does not apply to the property being documented, enter "N/A" for "not applicable." For functions, architectural classification, materials, and areas of significance, enter only categories and subcategories from the instructions. Place additional entries and narrative items on continuation sheets (NPS Form 10-900a). Use a typewriter, word processor, or computer, to complete all items.

1. Name of Property

historic name Poplar Bluff Public Library

other names/site number N/A

2. Location

street & number 318 N. Main Street not for publication N/A

city or town Poplar Bluff vicinity N/A

state Missouri code MO county Butler code 023 zip code 63901

3. State/Federal Agency Certification

As the designated authority under the National Historic Preservation Act of 1986, as amended, I hereby certify that this nomination request for determination of eligibility meets the documentation standards for registering properties in the National Register of Historic Places and meets the procedural and professional requirements set forth in 36 CFR Part 60. In my opinion, the property meets does not meet the National Register Criteria. I recommend that this property be considered significant nationally statewide locally. (See continuation sheet for additional comments.)

Claire F. Blackwell 26 October 1994
Signature of certifying official Claire F. Blackwell Date
Deputy SHPO

Missouri Department of Natural Resources
State or Federal agency and bureau

In my opinion, the property meets does not meet the National Register criteria. (See continuation sheet for additional comments.)

Signature of commenting or other official Date

State or Federal agency and bureau

4. National Park Service Certification

I, hereby certify that this property is:

entered in the National Register _____

See continuation sheet.

determined eligible for the _____

National Register

See continuation sheet.

determined not eligible for the _____

National Register

removed from the National Register _____

other (explain): _____

Signature of Keeper

Date of Action

Poplar Bluff Public Library
Name of Property

Butler County, Missouri
County and State

5. Classification

Ownership of Property (Check as many boxes as apply) Category of Property (Check only one box)

- private
- public-local
- public-State
- public-Federal

- building(s)
- district
- site
- structure
- object

Number of Resources within Property

(Do not include previously listed resources in the count).

Contributing	Noncontributing
<u>1</u>	<u>0</u> buildings
<u>0</u>	<u>0</u> sites
<u>0</u>	<u>0</u> structures
<u>0</u>	<u>0</u> objects
<u>1</u>	<u>0</u> Total

Number of contributing resources previously listed in the National Register N/A

Name of related multiple property listing (Enter "N/A" if property is not part of a multiple property listing.)

Historic Resources of Poplar Bluff, Missouri _____

6. Function or Use

Historic Functions (Enter categories from instructions)

<u>SOCIAL HISTORY</u>	<u>library</u>
_____	_____
_____	_____
_____	_____
_____	_____

Current Functions (Enter categories from instructions)

<u>SOCIAL HISTORY</u>	<u>library</u>
_____	_____
_____	_____
_____	_____
_____	_____

7. Description

Architectural Classification (Enter categories from instructions)

LATE 19TH AND 20TH CENTURY REVIVALS/
Colonial Revival

Materials (Enter categories from instructions)

foundation	<u>concrete</u>
roof	<u>asphalt</u>
walls	<u>brick</u>
other	<u>wood</u>
	<u>steel</u>

Narrative Description

(Describe the historic and current condition of the property on one or more continuation sheets.)

Poplar Bluff Public Library

Butler County, Missouri

Name of Property

County and State

8. Statement of Significance

Applicable National Register Criteria

(Mark "x" in one or more boxes for the criteria qualifying the property for National Register listing)

- A** Property is associated with events that have made a significant contribution to the broad patterns of our history.
- B** Property is associated with the lives of persons significant in our past.
- C** Property embodies the distinctive characteristics of a type, period, or method of construction or represents the work of a master, or possesses high artistic values, or represents a significant and distinguishable entity whose components lack individual distinction.
- D** Property has yielded, or is likely to yield information important in prehistory or history.

Criteria Considerations

(Mark "X" in all the boxes that apply.)

- A** owned by a religious institution or used for religious purposes.
- B** removed from its original location.
- C** a birthplace or a grave.
- D** a cemetery.
- E** a reconstructed building, object, or structure.
- F** a commemorative property.
- G** less than 50 years of age or achieved significance within the past 50 years.

Areas of Significance

(Enter categories from instructions).

Social History
Architecture

Period of Significance

1936 - 1943

Significant Dates

1936

Significant Person

(Complete if Criterion B is marked above)

N/A

Cultural Affiliation

N/A

Architect/Builder

Architect/Pleitsch and Price Architects, St. Louis
Builder/Rhinehart Construction Co., St. Louis

Narrative Statement of Significance

(Explain the significance of the property on one or more continuation sheets.)

9. Major Bibliographical References

(Cite the books, articles, and other sources used in preparing this form on one or more continuation sheets.)

Previous documentation on file (NPS)

- preliminary determination of individual listing (36 CFR 67) has been requested.
- previously listed in the National Register
- previously determined eligible by the National Register
- designated a National Historic Landmark
- recorded by Historic American Buildings Survey # _____
- recorded by Historic American Engineering Record # _____

Primary Location of Additional Data

- State Historic Preservation Office
- Other State agency
- Federal agency
- Local government
- University
- Other

Name of repository: Historic Preservation Program, Missouri Department of Natural Resources

Poplar Bluff Public Library
Name of Property

Butler County, Missouri
County and State

10. Geographical Data

Acreage of Property Less than 1 acre

UTM References

(Place additional UTM references on a continuation sheet)

Zone Easting Northing Zone Easting Northing

15 732800 4071000

See continuation sheet.

Verbal Boundary Description

(Describe the boundaries of the property on a continuation sheet.)

Boundary Justification

(Explain why the boundaries were selected on a continuation sheet.)

11. Form Prepared By

name/title Philip Thomason/Principal

organization Thomason and Associates date

street & number P.O. Box 121225 telephone 615-383-0227

city or town Nashville state TN zip code 37212

Additional Documentation

Submit the following items with the completed form:

Continuation Sheets

Maps

A USGS map (7.5 or 15 minute series) indicating the property's location.

A sketch map for historic districts and properties having large acreage or numerous resources.

Photographs

Representative black and white photographs of the property.

Additional items

(Check with the SHPO or FPO for any additional items)

Property Owner

(Complete this item at the request of the SHPO or FPO.)

name

street & number telephone

city or town state zip code

Paperwork Reduction Act Statement: This information is being collected for applications to the National Register of Historic Places to nominate properties for listing or determine eligibility for listing, to list properties, and to amend existing listings. Response to this request is required to obtain a benefit in accordance with the National Historic Preservation Act, as amended (16 U.S.C. 470 et seq.).

United States Department of the Interior
National Park Service

NATIONAL REGISTER OF HISTORIC PLACES
CONTINUATION SHEET

Section 7 Page 1

Poplar Bluff Public Library
name of property

Butler County, Missouri
county and state

Narrative Description

The Poplar Bluff Public Library is located at 318 N. Main Street in Poplar Bluff, Missouri. The building is located in a mixed residential and commercial area two blocks north of the downtown commercial area of the city. The library occupies a lot at the southeast corner of N. Main and W. Elm Street. At the rear of the building is an alley and there no outbuildings or structures associated with the library building. The building has not been extensively altered on either the interior or exterior and retains its integrity of design.

The Poplar Bluff Public Library is a one-story brick, Colonial Revival style building constructed in 1936. The building has a full basement with a concrete foundation, gable roof of asphalt shingles and exterior of multi-colored Flemish bond brick. The main entrance is set within a projecting gabled bay on the west facade. This entrance has aluminum and glass double doors added in 1971. Above the doors is an original swan's neck dentilled pediment and urn. Above the pediment is an arched multi-light transom and a concrete keystone. Above the arch is a concrete cartouche with an inset open book design. The projecting central bay on the main facade has brick quoins. On either side of the entrance are original metal and glass light fixtures.

Windows throughout the building are original thirty-light metal casement design. The central paired six lights are hinged and open out. The window openings have concrete sills and brick jack arches with concrete keystones. Below the roofline is a wood cornice with decorative brackets. The basement has paired four-light steel casement windows. On the south and north facades are Palladian windows with a central thirty-six-light steel casement window and multi-light arch. This window is flanked by sixteen-light steel casement windows. Windows on the secondary facades also have brick jack arches and concrete keystones. In the gables of the east and west facades, the brick has been repointed. In the gable fields are oval louvered wood vents with concrete keystones. Windows on the rear (east) facade are sixteen-light casement design with concrete sills and soldier course lintels. A handicapped ramp entrance was added on the north facade in 1986.

The main entrance opens onto a lobby and staircase. The staircase has terrazzo steps, a wrought iron railing and wood handrail. The stairs lead to the basement and first floor. The basement contains the Helen Crain Youth Library, and this area was remodeled in 1967. The basement originally held an auditorium but the stage was removed during the 1967 remodeling. The staircase in the lobby leads to original ten-light glass and wood double doors on the first floor. Over the doors is a twelve-light arched transom and flanking the doors are nine-light fixed windows. Opening onto the staircase are sixteen-light fixed wood windows in the north and south walls.

The interior of the first floor retains some original built-in oak bookshelves, original plaster walls and ceiling. The floor has been covered with carpet and other surface materials. The original open space arrangement has been retained.

United States Department of the Interior
National Park Service

NATIONAL REGISTER OF HISTORIC PLACES
CONTINUATION SHEET

Section 7 Page 2

Poplar Bluff Public Library
name of property

Butler County, Missouri
county and state

The Poplar Bluff Public Library retains much of its architectural integrity. Exterior alterations have been confined to the addition of a handicapped access ramp on the north facade and the addition of a modern glass and metal door at the primary entrance. Interior changes have also been minimal with major remodeling occurring only in the basement area. No outbuildings are associated with the property. In front of the building is a low concrete retaining wall.

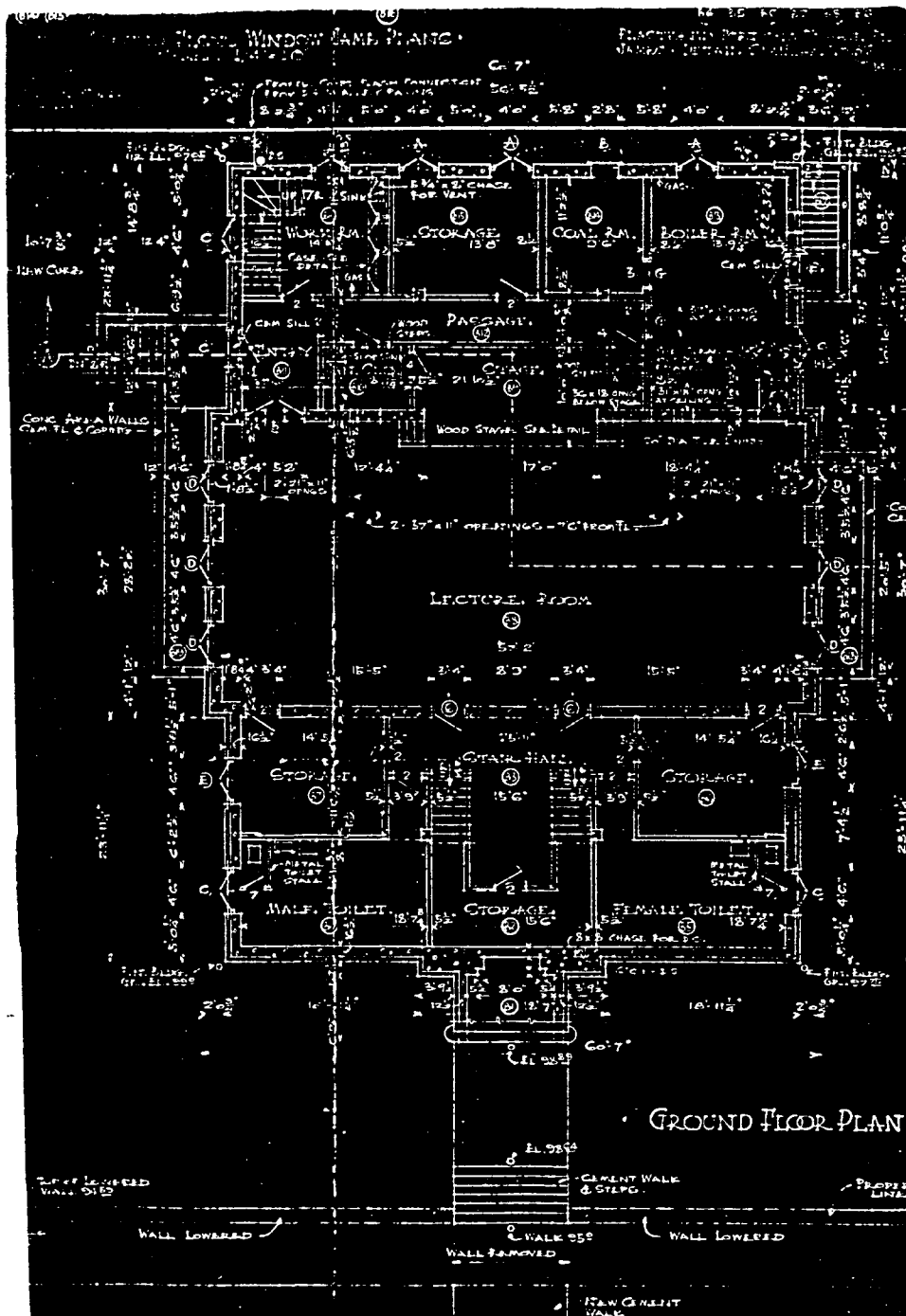
United States Department of the Interior
National Park Service

NATIONAL REGISTER OF HISTORIC PLACES
CONTINUATION SHEET

Section 7 Page 3

Poplar Bluff Public Library
name of property

Butler County, Missouri
county and state



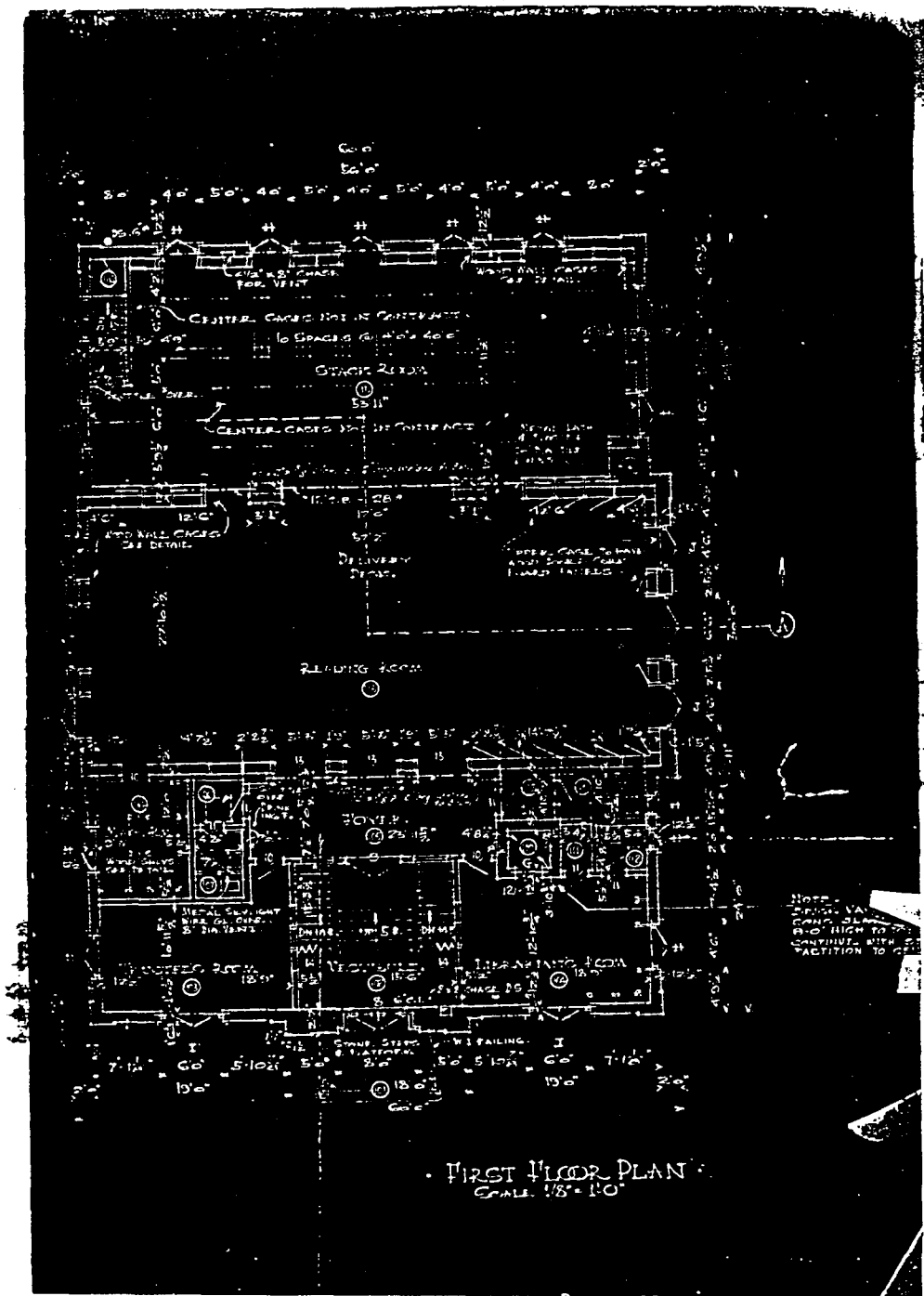
United States Department of the Interior
National Park Service

NATIONAL REGISTER OF HISTORIC PLACES
CONTINUATION SHEET

Section 7 Page 4

Poplar Bluff Public Library
name of property

Butler County, Missouri
county and state



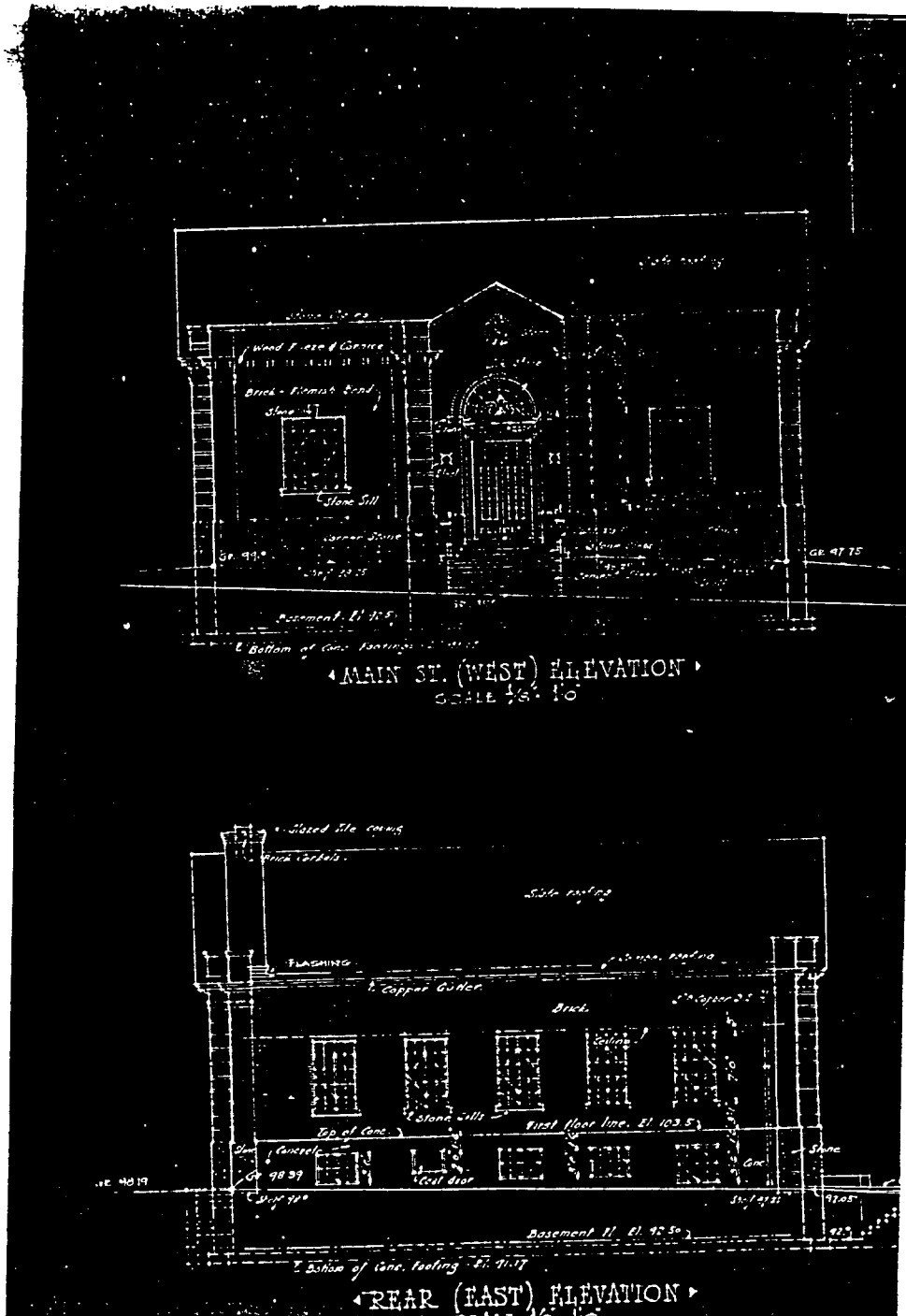
United States Department of the Interior
National Park Service

NATIONAL REGISTER OF HISTORIC PLACES
CONTINUATION SHEET

Section 7 Page 5

Poplar Bluff Public Library
name of property

Butler County, Missouri
county and state



United States Department of the Interior
National Park Service

NATIONAL REGISTER OF HISTORIC PLACES
CONTINUATION SHEET

Section 8 Page 6

 Poplar Bluff Public Library
name of property

 Butler County, Missouri
county and state

Statement of Significance

The Poplar Bluff Public Library is significant under Criterion A for its association with the social development and of Poplar Bluff. The building was constructed following organized citizen efforts to promote community welfare. Although the library had been in existence as an organization since 1915, it was not until 1936 that the City of Poplar Bluff constructed its first building exclusively for use as a public library (see "Historic Resources of Poplar Bluff, Missouri" MPS: Public Buildings of Poplar Bluff, Missouri, ca. 1883-1943). The library is also significant under Criterion C for its architectural design. The building was designed in the Colonial Revival style and has not been extensively altered on the exterior (see Public Buildings Property Type in "Historic Resources of Poplar Bluff, Missouri" MPS). The design of the building reflects the city's intent to provide a location which would serve the citizens of Poplar Bluff as both a library and a community center. The library building was designed with a reading room and book shelves on the first floor, and a civic auditorium in the basement. The building has continually served as the city's public library since its construction.

Poplar Bluff's library was organized in April 1915, when Mrs. M.C. Horton, president of a local reading club, invited 250 individuals to gather at her home and donate books which could be used for a public library. The new library collected 150 books at the meeting and its services relied solely upon the assistance of local volunteers and community support. In December, 1915, a Library Association Board was created and \$1.00 memberships were sold to purchase new books and supplies. William N. Barron, a local business owner, offered space in the Criterion Building on Pine Street at no cost to the public facility. The community donated furniture and the St. Louis Library provided an additional 1,200 books. Consisting of a single room, the library soon outgrew its limited space. In 1917, a library tax was voted in by the city establishing the Poplar Bluff Library as a permanent addition to the community. Local fund raising and donations increased holdings to 13,000 books by 1930 at which time the library relocated to a former Elks Lodge at the corner of Poplar and Second Streets. The institution remained at this location until the building it occupied was sold and services were moved to the Fraternal Building at the corner of Broadway and Poplar.¹

The need for a permanent library facility was apparent by the early 1930s and in 1935 the city backed a bond issue of \$30,000 for the construction of a new library.² A site was purchased at the corner of W. Elm and N. Main Streets and the firm of Pleitsch & Price Architects of St. Louis was selected to design the building. The contractor for the project was the Rhinehart Construction Company, also of St. Louis. The design for the building was in the popular Colonial Revival style which was used for many public and governmental buildings during the 1920s and 1930s. The building was constructed of Flemish bond brick and included Colonial Revival detailing such as quoins,

¹Dolores Shearon, "Poplar Bluff Public Library," Butler County Missouri, Vol. II (Poplar Bluff, MO: Butler County Genealogical Society, 1988), p. 24-25.

²David Bruce Deem, History of Butler County, Missouri: A Narrative Account of its Historical Progress, its People and its Principal Interests (Poplar Bluff, MO: Poplar Bluff Printing Company, 1925), p. 77.

United States Department of the Interior
National Park Service

NATIONAL REGISTER OF HISTORIC PLACES
CONTINUATION SHEET

Section 8 Page 7

Poplar Bluff Public Library
name of property

Butler County, Missouri
county and state

a pediment at the entrance, and jack arching at the windows. The interior was designed with a reading room on the first floor and auditorium in the basement.³

The library was officially opened on September 11, 1936 and over 1,000 residents attended the opening reception.⁴ The building has continued to serve as the city's public library since its construction. In the late 1960s the auditorium was removed and a children's library area was added in its place. The first floor reading room has not been extensively altered and retains its original design and detailing. With the exception of a handicapped access ramp added on the north facade, the exterior has not been altered. The building retains its original Colonial Revival detailing and integrity of design.

Additional information on the historic contexts and significance of the Poplar Bluff Public Library is located in the accompanying Multiple Property Cover Document, "Historic Resources of Poplar Bluff, Missouri".
Missouri".

³"The New Poplar Bluff Library," Daily American Republic (13 October 1986), n.p.

⁴Shearon, p. 25.

United States Department of the Interior
National Park Service

NATIONAL REGISTER OF HISTORIC PLACES
CONTINUATION SHEET

Section 9 Page 8

 Poplar Bluff Public Library
name of property

 Butler County, Missouri
county and state

BIBLIOGRAPHY

Deem, David Bruce. History of Butler County, Missouri: A Narrative Account of its Historical Progress, its People and its Principal Interests. Poplar Bluff, MO: Poplar Bluff Printing Company, 1925.

"The New Poplar Bluff Public Library," Daily American Republican. 13 October 1936.

Shearon, Dolores. "Poplar Bluff Public Library," Butler County Missouri, Vol. II. Poplar Bluff, MO: Butler County Genealogical Society, 1988.

United States Department of the Interior
National Park Service

NATIONAL REGISTER OF HISTORIC PLACES
CONTINUATION SHEET

Section 10 Page 9

 Poplar Bluff Public Library
name of property

 Butler County, Missouri
county and state

Verbal boundary description

All of Lot 2 of Block 2, City of Poplar Bluff, Butler County.

Verbal boundary justification

The boundary for the Poplar Bluff Public Library includes all property historically associated with the building. The library is located on a rectangular lot and there are no associated outbuildings or structures.

United States Department of the Interior
National Park Service

NATIONAL REGISTER OF HISTORIC PLACES
CONTINUATION SHEET

Section Photographs Page 10

Poplar Bluff Public Library
name of property

Butler County, Missouri
county and state

Poplar Bluff Public Library, 318 N. Main Street, Poplar Bluff
Butler County, Missouri

Photo by: Thomason and Associates

Date: August, 1993

Location of Negatives: Missouri Cultural Resource Inventory
Missouri Department of Natural Resources
Jefferson City, MO

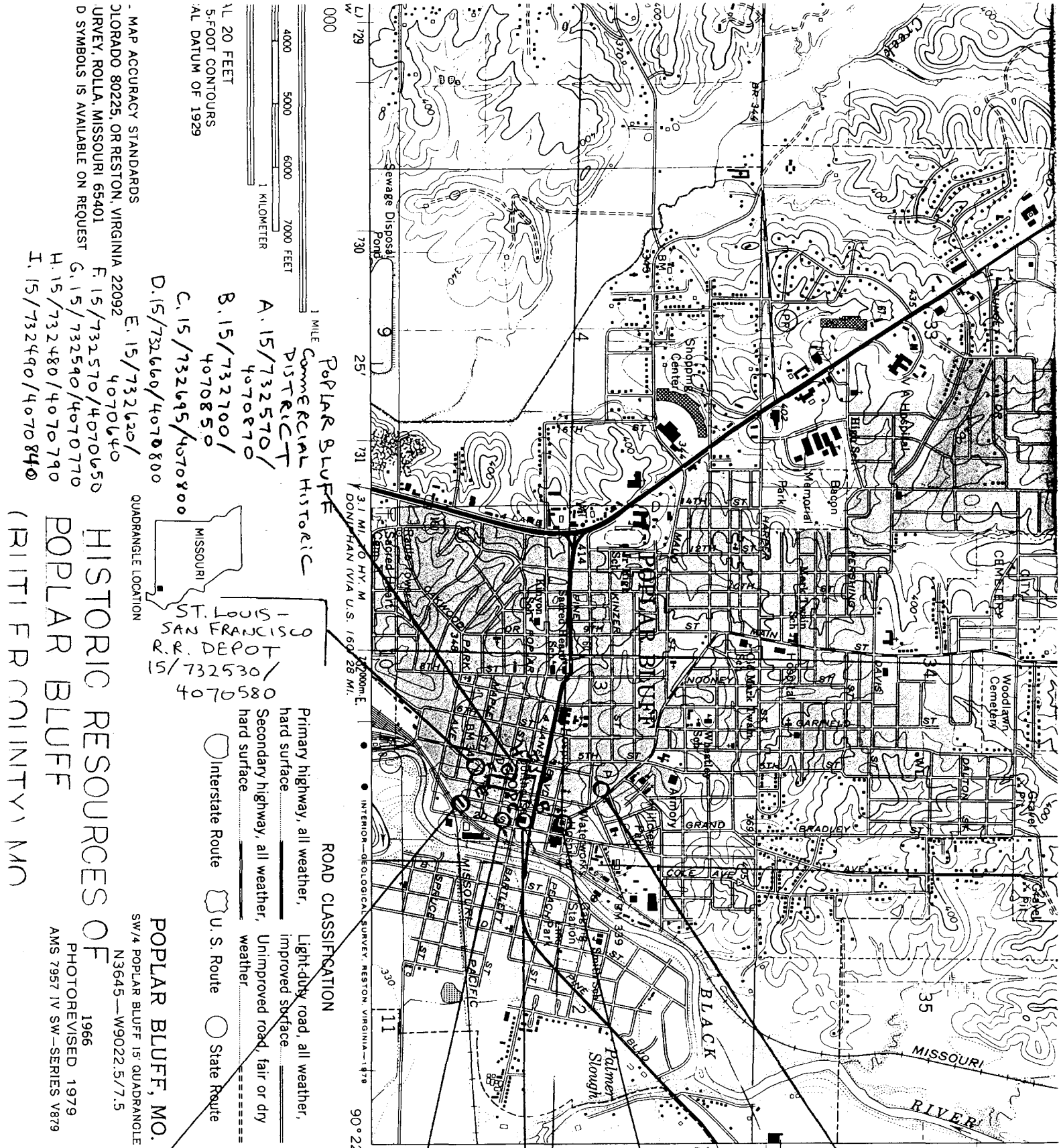
Photo No. 1: West and north facades, view towards southeast.

Photo No. 2: North and east facades, view towards southwest.

Photo No. 3: South and east facades, view towards northwest.

Photo No. 4: Interior detail of lobby and staircase.

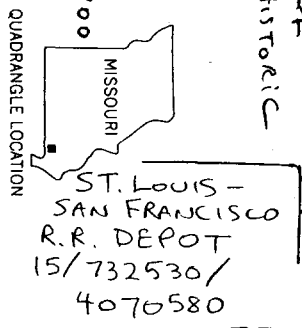
Photo No. 5: Interior detail of first floor reading room.



1:20 FEET
5-FOOT CONTOURS
NAD DATUM OF 1929

MAP ACCURACY STANDARDS
COLORADO 80225, OR RESTON, VIRGINIA 22092
URVEY, ROLLA, MISSOURI 65401
D SYMBOLS IS AVAILABLE ON REQUEST

- A. 15/732570/4070870
- B. 15/732700/4070850
- C. 15/732695/4070800
- D. 15/732660/4070800
- E. 15/732620/4070640
- F. 15/732570/4070650
- G. 15/732590/4070770
- H. 15/732480/4070790
- I. 15/732490/4070840



ROAD CLASSIFICATION

- Primary highway, all weather, hard surface
- Secondary highway, all weather, hard surface
- Interstate Route
- U. S. Route
- State Route
- Light-duty road, all weather, improved surface
- Unimproved road, fair or dry weather

**HISTORIC RESOURCES OF
POPLAR BLUFF
(PRIORITY)**

POPLAR BLUFF, MO.
SW 1/4 POPLAR BLUFF 15 QUADRANGLE
N3645—W9022.5/7.5

PHOTOREVISED 1979
AMS 7957 IV SW—SERIES V879

ST. LOUIS, IRON COUNTY
MID SOUTHERN
15/732710/4070510

ZEH BUILDING
15/732790/4070720

BUTLER COUNTY COURTHOUSE
15/732790/4070820

**POPLAR BLUFF
PUBLIC LIBRARY**
15/732800/
4071000

**MOORE-DALTON
HOUSE**
15/732640/
4071180

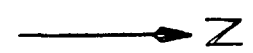




Photo #1 of 5, Poplar Bluff Public Library - 318 N. Main St., Poplar Bluff, MO - Bu



Photo #2 of 5, Poplar Bluff Public Library - 318 N. Main St., Poplar Bluff, MO -



Photo #3 of 5, Poplar Bluff Public Library - 318 N. Main St., Poplar Bluff, MO -

Photo #4 of 5, Poplar Bluff Public Library - 318 N. Main St., Poplar Bluff, MO - Butler Co.



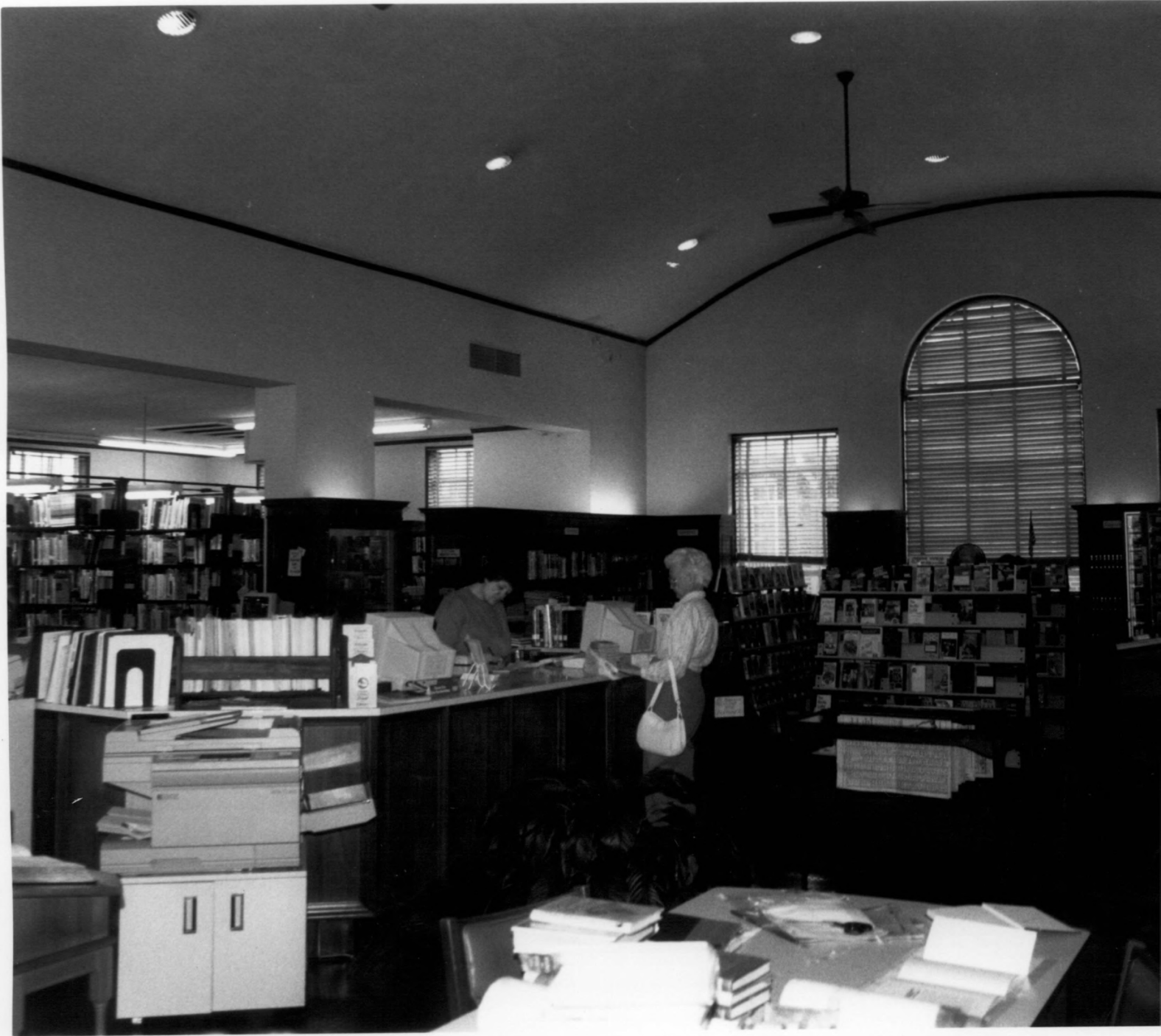


Photo #5 of 5, Poplar Bluff Public Library - 318 N. Main St, Poplar Bluff, MO - E