

United States Department of the Interior
National Park ServiceNational Register of Historic Places
Registration Form

This form is for use in nominating or requesting determinations of eligibility for individual properties or districts. See instructions in *Guidelines for Completing National Register Forms* (National Register Bulletin 16). Complete each item by marking "x" in the appropriate box or by entering the requested information. If an item does not apply to the property being documented, enter "N/A" for "not applicable." For functions, styles, materials, and areas of significance, enter only the categories and subcategories listed in the instructions. For additional space use continuation sheets (Form 10-900a). Type all entries.

1. Name of Property

historic name Pigott, Josephine Trigg, Houseother names/site number 0-38

2. Location

street & number 1307 Sixth Street

N/A not for publication

city, town Boonville

N/A vicinity

state Missouri code MO county Cooper code 053 zip code 65233

3. Classification

Ownership of Property

- ☒ private
☐ public-local
☐ public-State
☐ public-Federal

Category of Property

- ☒ building(s)
☐ district
☐ site
☐ structure
☐ object

Number of Resources within Property

Contributing	Noncontributing
<u>1</u>	<u> </u> buildings
<u> </u>	<u> </u> sites
<u> </u>	<u> </u> structures
<u> </u>	<u> </u> objects
<u>1</u>	<u> </u> Total

Name of related multiple property listing:

Historic Resources of Boonville, Mo.Number of contributing resources previously
listed in the National Register 0

4. State/Federal Agency Certification

As the designated authority under the National Historic Preservation Act of 1966, as amended, I hereby certify that this
☒ nomination ☐ request for determination of eligibility meets the documentation standards for registering properties in the
National Register of Historic Places and meets the procedural and professional requirements set forth in 36 CFR Part 60.
In my opinion, the property ☒ meets ☐ does not meet the National Register criteria. ☐ See continuation sheet.

Signature of certifying official G. Tracy Mehan III, DirectorDate 3 August 89Department of Natural Resources and State Historic Preservation Officer

State or Federal agency and bureau

In my opinion, the property ☐ meets ☐ does not meet the National Register criteria. ☐ See continuation sheet.

Signature of commenting or other official

Date

State or Federal agency and bureau

5. National Park Service Certification

I, hereby, certify that this property is:

- ☐ entered in the National Register.
☐ See continuation sheet.
☐ determined eligible for the National
Register. ☐ See continuation sheet.
☐ determined not eligible for the
National Register.
☐ removed from the National Register.
☐ other, (explain:)

Signature of the Keeper

Date of Action

6. Function or Use

Historic Functions (enter categories from instructions)

Domestic: single dwelling

Current Functions (enter categories from instructions)

Domestic: single dwelling

7. Description

Architectural Classification
(enter categories from instructions)

Gothic Revival

Materials (enter categories from instructions)

foundation Brick

walls Brick

roof Asphalt

other Wood

Describe present and historic physical appearance.

JOSEPHINE TRIGG PIGOTT HOUSE

SUMMARY: One of three surviving Gothic Revival residences in Boonville, the one-and-one-half story Josephine Trigg Pigott House, 1307 Sixth Street, is constructed of brick laid in a common bond variant of seven stretcher rows per header row on a T-shaped plan. Its gable roofs are sheathed with composition shingles and distinguished by returns and centered cross gable. The Josephine Trigg Pigott house is virtually identical to the Juliet Trigg Johnson House, 1304 Main Street, although their floor plans are reversed. Both were built circa 1857-1860 by Dr. William H. Trigg as wedding gifts for his daughters and employ the same Gothic Revival style and many of the same details. The Pigott House has endured fewer alterations than the Johnson House and retains most of the essential features and elements which characterized its initial construction. Despite minor alterations, the Josephine Trigg Pigott House retains sufficient physical characteristics to convey integrity of workmanship, design, and materials, in addition to its integrity of location and setting.

ELABORATION: The facade, or east elevation, of the Pigott House is dominated by a centered cross gable which is typical of the Gothic Revival style. The double leaves of one-over-one casement windows with double arched rowlock lintel occupy the upper story's single central bay. The roofline entablature with bracketed overhang, which suggests the contemporary Italianate style, is continued along the cross gable eaves. Similar bracketing appears on the Juliet Trigg Johnson House. The first floor is divided into five symmetrically arranged bays. The central bay is occupied by double doors with transom, arranged in an outer pair of storm doors, an entrance vestibule, and a second, interior pair of doors. The bay is framed by a pedimented, dentiled surround which suggests Greek Revival rather than Gothic Revival detailing. The remaining four bays contain two-over-two, double hung sash surmounted by raised, arched brick lintels arranged in alternating soldier and rowlock bands. All windows on the facade are shuttered. Two corbelled brick chimneys pierce the roof ridge, rising on either side of a central hall.

The returns and bracketed entablature are continued on the north elevation's gable end. A single, two-over-two, double hung window capped with an arched rowlock lintel is centered in the upper story gable. The first story's two symmetrical bays are occupied by windows identical to those on the facade. The

United States Department of the Interior
National Park ServiceNational Register of Historic Places
Continuation Sheet

Pigott, Josephine Trigg, House

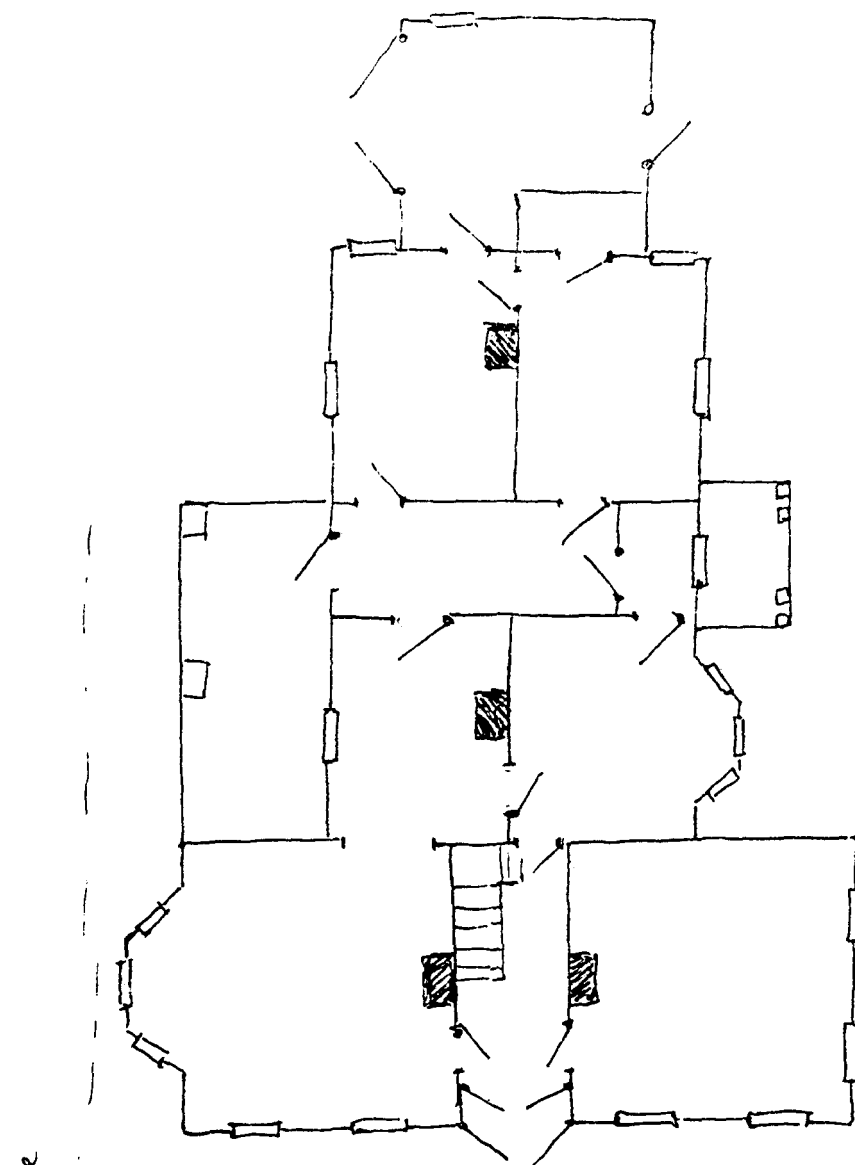
Section number 7 Page 1

rear gable extension is divided into three symmetrically arranged bays. A one story wooden bay on a brick foundation projects from the easternmost bay. Each planar surface holds a four-over-four, double hung window. The bracketed eaves and entablature are repeated on the bay and arched window headers are duplicated in wood. At the basement level, the bay projection is flanked by windows with arched rowlock lintels. The central bay was originally occupied by a door but presently houses a double leafed, eight paned casement window. A flat roofed porch with plain entablature, wood ornamentation, paired posts, and balustrade originally sheltered the facade entry but was relocated to this bay at an unknown date. The final bay contains a four-over-four, double hung sash and an arched brick lintel identical to those on the facade. A gabled, wooden dormer with bracketed entablature and pediment is centered on the roof of the extension's north elevation. The top sash of its two-over-two, double hung sash is arched.

A shed roofed brick garage with a cast concrete foundation was attached circa 1920 to the rear, or west, elevation of the gable extension. The garage is flanked by the predominant two-over-two, double hung window with arched brick lintels. A door with arched header is centered in the north elevation of the garage. In the west elevation, a six-over-six, double hung window with partially concealed arched lintel is set to the south of the elevation's center. Double, side hinged garage doors with a flat lintel are the only features in the south elevation. Two symmetrically placed two-over-two, double hung sash are located above the garage in the gable end.

Another one story, wooden bay with a brick foundation projects from the gable end of the south elevation. Fenestration is two-over-two, double hung sash with arched upper sash. The bracketed entablature is again present. A single window identical to those below with a brick rowlock header is centered in the upper story of the gable. The south elevation of the gable extension is divided into three asymmetrically arranged bays. A porch shelters the two easternmost bays. The flat roof which originally covered the porch remains beneath a shed roof which extends in a broken slope from the extension's roof edge. The porch, however, retains its bracketed roofline entablature and is supported by chamfered posts set on brick piers on the concrete porch slab. The central bay contains a door with arched lintel, while the easternmost bay contains a floor length, four-over-four, double hung sash, also with arched lintel. The unsheltered bay contains the two-over-two sash predominantly used on the house. A dormer identical to and opposite the dormer on the north slope of the gable extension's roof is located on the south slope. Two corbelled brick chimneys pierce the roof just below the ridge.

The interior of the Pigott House is virtually unaltered. A bathroom was added at the north end of the rear hall at an unknown date and the kitchen modernized. Interior trim, ceiling height, and hardware are original.



drive

Pigott, Josephine Trigg, House
1307 Sixth Street
Boonville, Cooper County

N →

not to scale

Sixth St

United States Department of the Interior
National Park Service

National Register of Historic Places Continuation Sheet

Pigott, Josephine Trigg, House

Section number 10 Page 1

then north along the common boundary between O-36 and O-38 for 100' to the beginning boundary point. No formal block, nor lot, designation has been recorded for this property; hence, this lot description is made in reference to the adjacent Lot #5 of Wendleton's Addition.

8. Statement of Significance

Certifying official has considered the significance of this property in relation to other properties:

☐ nationally ☐ statewide ☒ locally

Applicable National Register Criteria ☐ A ☐ B ☒ C ☐ D

Criteria Considerations (Exceptions) ☐ A ☐ B ☐ C ☐ D ☐ E ☐ F ☐ G

Areas of Significance (enter categories from instructions)

ARCHITECTURE

Period of Significance

c. 1857-1860

Significant Dates

c. 1857-1860

Cultural Affiliation

N/A

Significant Person

N/A

Architect/Builder

Unknown

State significance of property, and justify criteria, criteria considerations, and areas and periods of significance noted above.

SUMMARY: The Josephine Trigg Pigott House, 119 West Morgan Street, is significant under Criterion C in the area of ARCHITECTURE. One of three surviving Gothic Revival residences in Boonville, two of which are brick and are located outside of historic districts, the Josephine Trigg Pigott House retains the distinctive details and features of the style, which was never prolific in Boonville (see "Historic Resources of Boonville: The Steamboat Era, 1826-1870" and "Historic Resources of Boonville: Additional Architectural Contexts--Gothic Revival Residences"). Steep roofs, centered cross gables, and decorative wood ornamentation characterized the Gothic Revival style, and the Pigott House shares these characteristics with the remaining examples of the style in Boonville.

ELABORATION: The Josephine Trigg Pigott House was constructed circa 1857-1860 by Dr. William H. Trigg, a Boonville financier and merchant, as a wedding gift for his daughter. A house identical in scale and style, but with reversed floor plan, was constructed for a second daughter, Juliet, at 1304 Main Street, also as a wedding gift. Both the Josephine Trigg Pigott House and the Juliet Trigg Johnson House are the earliest examples of Gothic Revival residential architecture in Boonville. The Pigotts occupied the house only until 1867. Although a number of owners followed, the house has remained a single family dwelling.

☐ See continuation sheet

9. Major Bibliographical References

Johnson, W.F. History of Cooper County. 2 vols. Topeka: Historical Publishing Company, 1919; Reprint ed., Fort Worth: VKM Publishing Company, 1978.

Levens, Henry C., and Drake, Nathaniel M. A History of Cooper County, Missouri. St. Louis: Perrin and Smith, 1876; Reprint ed., n.p., n.d.

Property Abstract.

"Survey Notes--The Houses of Boonville," Boonville Daily News, December 5, 1979.

☐ See continuation sheet

Previous documentation on file (NPS):

- ☐ preliminary determination of individual listing (36 CFR 67) has been requested
- ☐ previously listed in the National Register
- ☐ previously determined eligible by the National Register
- ☐ designated a National Historic Landmark
- ☐ recorded by Historic American Buildings Survey # _____
- ☐ recorded by Historic American Engineering Record # _____

Primary location of additional data:

- ☒ State historic preservation office
- ☐ Other State agency
- ☐ Federal agency
- ☐ Local government
- ☐ University
- ☐ Other

Specify repository: _____

10. Geographical Data

Acreage of property Less than one acre

UTM References

A 1 5 5 2 2 6 3 0 4 3 1 2 6 4 0
Zone Easting Northing

C

B
Zone Easting Northing

D

☐ See continuation sheet

Verbal Boundary Description The property lies within an undesignated lot adjacent Lot #5, Wendleton's Addition, in the city of Boonville, Missouri. The lot is the same size and shape as the Juliet Trigg Johnson House (0-36) lot, to the east and is described as follows. Beginning at the lot's northwest corner, a common point between 0-36 (its northeast corner) and 0-38 (the Josephine Trigg Pigott House), then east 165' to 6th Street; then south along 6th Street 100'; then west 165' to the southwest corner (southeast corner of 0-36);

☒ See continuation sheet

Boundary Justification

The boundary encompasses the single parcel of land that is occupied by the property and its immediate surroundings. The legally recorded boundary lines that have been historically associated with the property retain integrity and form the limits of the boundary.

☐ See continuation sheet

11. Form Prepared By

name/title Preservation Planning Section

organization Missouri Historic Preservation Program date May 5, 1989

street & number P. O. Box 176 telephone 314/751-5365

city or town Jefferson City state Missouri zip code 65102

Photo Log:

Name of Property: **Pigott, Josephine Trigg, House**

City or Vicinity: **Boonville**

County: **Cooper County** State: **MO**

Photographer: **S. Mitchell**

Date

Photographed: **February 1989**

Description of Photograph(s) and number, include description of view indicating direction of camera:

- 1 of 9. View from E
- 2 of 9. View from SE
- 3 of 9. Detail of one story bar, view from S
- 4 of 9. Detail on window, view from E
- 5 of 9. View from NE
- 6 of 9. View from N
- 7 of 9. View from NW
- 8 of 9. View from SW
- 9 of 9. Detail of side porch, view from SW

















