

United States Department of the Interior
National Park Service

National Register of Historic Places Registration Form

This form is for use in nominating or requesting determinations of eligibility for individual properties or districts. See instructions in *Guidelines for Completing National Register Forms* (National Register Bulletin 16). Complete each item by marking "x" in the appropriate box or by entering the requested information. If an item does not apply to the property being documented, enter "N/A" for "not applicable." For functions, styles, materials, and areas of significance, enter only the categories and subcategories listed in the instructions. For additional space use continuation sheets (Form 10-900a). Type all entries.

1. Name of Property

historic name Osage Farms Units No. 8 and No 9 Historic District
other names/site number _____

2. Location

street & number Missouri Highway D near Missouri Highway T N/A not for publication
city, town Houstonia vicinity
state Missouri code MO county Pettis code 159 zip code 65333

3. Classification

Ownership of Property	Category of Property	Number of Resources within Property	
<input checked="" type="checkbox"/> private	<input type="checkbox"/> building(s)	Contributing	Noncontributing
<input type="checkbox"/> public-local	<input checked="" type="checkbox"/> district	<u>6</u>	_____ buildings
<input type="checkbox"/> public-State	<input type="checkbox"/> site	_____	_____ sites
<input type="checkbox"/> public-Federal	<input type="checkbox"/> structure	_____	_____ structures
	<input type="checkbox"/> object	_____	_____ objects
		<u>6</u>	<u>0</u> Total

Name of related multiple property listing: Osage Farms Resettlement Properties in Pettis County, Missouri
Number of contributing resources previously listed in the National Register 0

4. State/Federal Agency Certification

As the designated authority under the National Historic Preservation Act of 1966, as amended, I hereby certify that this nomination request for determination of eligibility meets the documentation standards for registering properties in the National Register of Historic Places and meets the procedural and professional requirements set forth in 36 CFR Part 60. In my opinion, the property meets does not meet the National Register criteria. See continuation sheet.

Claire F. Blackwell 6 August 1991
Signature of certifying official Claire F. Blackwell Date
Deputy State Historic Preservation Officer, Department of Natural Resources
State or Federal agency and bureau

In my opinion, the property meets does not meet the National Register criteria. See continuation sheet.

Signature of commenting or other official Date

State or Federal agency and bureau

5. National Park Service Certification

I, hereby, certify that this property is:

entered in the National Register.
 See continuation sheet.

determined eligible for the National Register. See continuation sheet.

determined not eligible for the National Register.

removed from the National Register.

other, (explain:) _____

Signature of the Keeper

Date of Action

6. Function or Use

Historic Functions (enter categories from instructions)

Domestic/Single Dwelling
 Agriculture/Subsistence/Animal Facility
 Agriculture/Subsistence/Animal Facility
 Domestic/Secondary Structure/Storage Shed

Current Functions (enter categories from instructions)

Domestic/Single Dwelling
 Agriculture/Subsistence/Storage
 Agriculture/Subsistence/Animal Facility
 Domestic/Secondary Structure/Storage Shed

7. Description

Architectural Classification

(enter categories from instructions)

Materials (enter categories from instructions)

foundation Concrete

walls Wood

Concrete

roof Asphalt

other

Other: Resettlement Administration Architecture

Other: Central-Passage Barn

Describe present and historic physical appearance.

Osage Farms Units No. 8 and No. 9 Historic District is a collection of relatively unaltered properties on two contiguous, government-built, individual farmsteads located on the south side of Missouri Highway D near Missouri Highway T in northern Pettis County. The extant properties, all contributing, consist of a Type 315:13 government farmhouse, two Type 411:12 government barns, two Type 4110:14 government poultry houses and a government food storage building (see "Osage Farms Resettlement Properties in Pettis County, Missouri: Government Farmhouse; Government Outbuildings; and Contiguous Farmstead Historic Districts").

Constructed by the Resettlement Administration/Farm Security Administration in 1937, the properties of Units 8 and 9 illustrate the proximity--presumably intended to promote neighborliness among the tenants--of some individual government farmsteads at Osage Farms. The properties are highly visible along the old "farm-to-market road" (as Missouri Highway D, which zigzags across much of the project area, was called). Linked by their utilitarian architecture, workmanship and construction materials, the properties clearly share a common past and are evocative of the years when tenants tilled the land and raised animals to earn a government-supervised livelihood, from 1937-43.

The properties, keyed to the site map, are as follows:

A. Type 411:12 Government Barn. The property is relatively unaltered, with exterior changes apparently limited to replacement doors and a large entrance west of the central doorway. The interior is generally intact. Animal stalls remain along the east wall. This was a Unit No. 8 building. (See Photos #1, 2, 3, 4, 9, 10, 11 and 12)

B. Type 4110:14 Government Poultry House. The original wood shingle roof is retained on this moderately altered example. The main facade with six lower ventilation windows (covered) faces south. An entrance has been added to the north end. Unit No. 8. (See Photos #1 and 3.)

C. Government Food Storage Building. The interior shelving which is usually missing from these rugged concrete block structures is still in place in this unaltered example. This was a Unit No. 9 building. (See Photos #2, 5, 8 and 9.)

D. Type 315:13 Government House. Like most government houses, this building has been changed to suit the tastes of its owners but its design is intact and the alterations are rather superficial. Unlike most other Type 315:13 houses at Osage Farms, this example has an entrance between the gables. Alterations include the

8. Statement of Significance

Certifying official has considered the significance of this property in relation to other properties:

nationally statewide locally

Applicable National Register Criteria A B C D

Criteria Considerations (Exceptions) A B C D E F G

Areas of Significance (enter categories from instructions)

Social History
Agriculture
Architecture

Period of Significance

1937-43

Significant Dates

1937

Cultural Affiliation

N/A

Significant Person

N/A

Architect/Builder

Resettlement Administration; Farm Security Administration

State significance of property, and justify criteria, criteria considerations, and areas and periods of significance noted above.

SUMMARY:

Osage Farms Units No. 8 and No. 9 Historic District, Missouri Highway D near Missouri Highway T, is significant under Criteria A and C in the areas of Social History, Agriculture and Architecture. The district is a cohesive grouping of six properties constructed in 1937 by the Resettlement Administration/Farm Security Administration to rehabilitate depression-stricken Missouri farm families (see "Osage Farms Resettlement Properties in Pettis County, Missouri"). Together, the properties are strongly evocative of their historic past when neighboring tenants struggled to coax a government-subsidized and supervised living from the northern Pettis County soil. The austere, utilitarian buildings are representative of government resettlement architecture during the Great Depression. The district properties include a Type 315:13 government farmhouse and three types of government outbuildings (Type 411:12 government barn, Type 4110:14 government poultry house and government food storage building), all in relatively intact or better condition.

ELABORATION:

After occupancy by one or more other resettled farm families, Osage Farms Unit No. 9 became the home of Milo and Ida Baker in 1943. The Baker family came to northern Pettis County from Collins in St. Clair County in 1939, at first farming near the Blackwater River north of Houstonia. But after losing most of their crops during a poor year, they applied for Osage Farms. The Bakers signed a lease-purchase agreement with the FSA, eventually acquiring their farm for \$7,580. In selling the farmstead to the Bakers, the FSA increased its size from 72.157 acres to approximately 121 acres. The project was winding down by 1943, and the FSA found that many potential buyers wanted more land than was originally provided. The FSA obliged by consolidating portions of several adjacent farmsteads. Mrs. Baker, who said her husband paid off the loan as soon as possible to escape government supervision, resides in the house today.¹

¹Interview, Mrs. Ida Baker, September 1989.

9. Major Bibliographical References

For complete bibliographical information, see "Osage Farms Resettlement Properties in Pettis County, Missouri."

Also:

Interview, Mrs. Ida Baker, September 1989.

See continuation sheet

Previous documentation on file (NPS):

- preliminary determination of individual listing (36 CFR 67) has been requested
- previously listed in the National Register
- previously determined eligible by the National Register
- designated a National Historic Landmark
- recorded by Historic American Buildings Survey # _____
- recorded by Historic American Engineering Record # _____

Primary location of additional data:

- State historic preservation office
- Other State agency
- Federal agency (National Archives)
- Local government
- University
- Other

Specify repository:
Other: Show-Me Regional Planning Commission, Warrensburg, MO

10. Geographical Data

Acreage of property Less than one acre

UTM References

A 15 468840 4301450
 Zone Easting Northing

B
 Zone Easting Northing

C

D

See continuation sheet

Verbal Boundary Description (References to points refer to the attached map)

Beginning at a point 1,865' east of State Highway T and 190' south of the center of State Highway D (Point A), proceed east 190' to Point B. Then proceed north 105' to Point C. Then proceed east 150' to Point D. Then proceed south 205' to Point E. Then proceed west 335' to Point F. Then proceed north 105' to the point of origin.

See continuation sheet

Boundary Justification

Boundaries encompass the six Osage Farms properties which are extant on their original Unit No. 8 and Unit No. 9 sites. The boundaries exclude a mobile home and a small workshop building, both on the Unit No. 8 site.

See continuation sheet

11. Form Prepared By

name/title Roger Maserang/Historian
 organization Show-Me Regional Planning Commission date August 16, 1990
 street & number 113 N. Holden St.; P.O. Box 348 telephone 816-747-2294
 city or town Warrensburg state Missouri zip code 64093

United States Department of the Interior
National Park ServiceNational Register of Historic Places
Continuation SheetSection number 7 Page 1

Osage Farms Units No. 8 and No. 9 Historic District

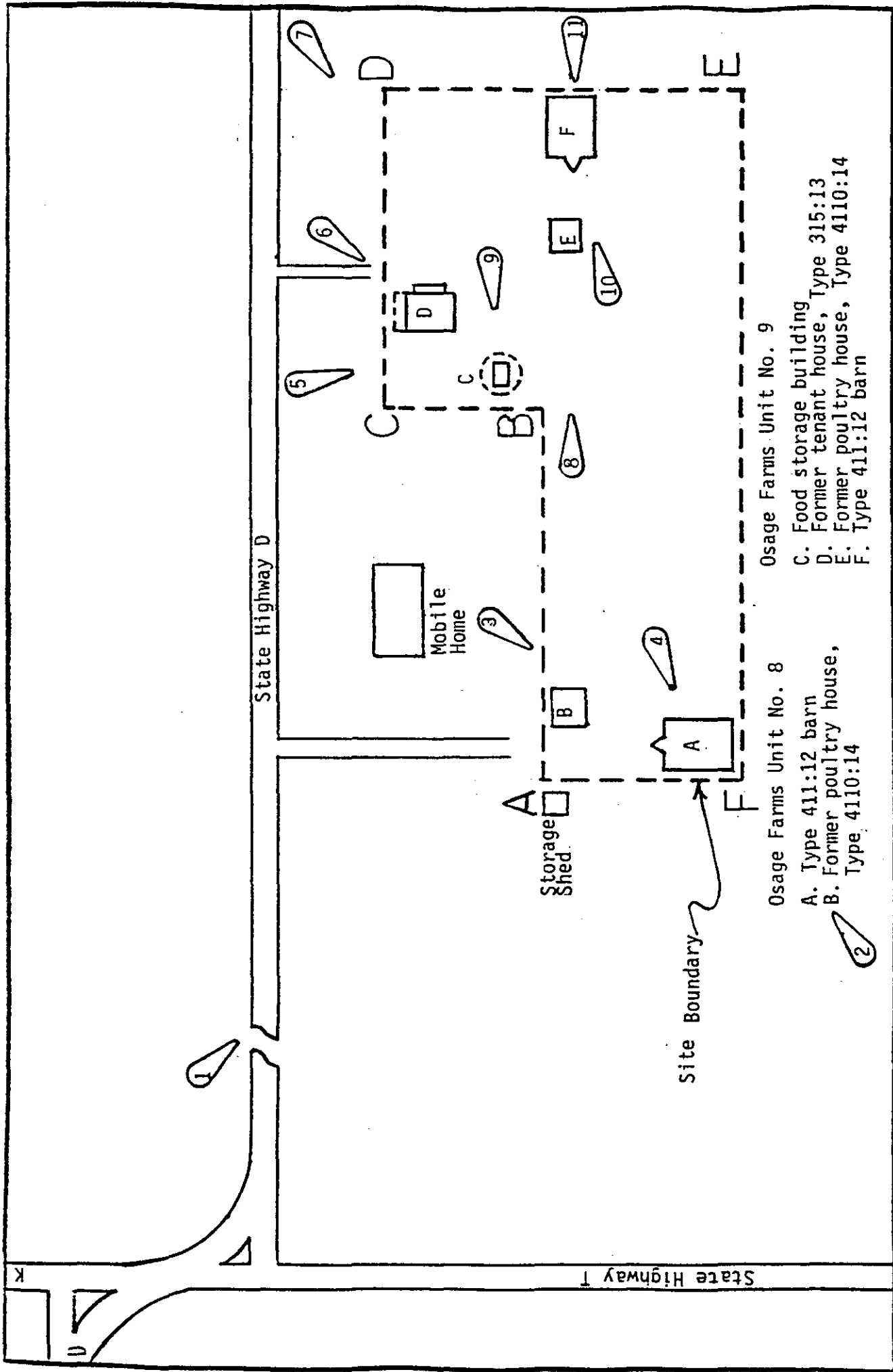
ca. 1950s addition of a concrete slab front porch with an overhanging roof, the 1944 addition of a small enclosed porch on the east facade and the (probable) replacement of 6/6 sash with 1/1 sash in most windows. The building's profile with its distinctive gambrel roof is largely unaffected by the alterations, which are reversible since the original structure has not been changed. For example, the enclosed porch merely obscures the original clapboard siding, entrance and window of the exterior wall behind it. Unit No. 8. (See Photos #1, 2, 5, 6 and 7.)

E. Type 4110:14 Government Poultry House. Although converted into a garage by the addition of a vehicle entrance many years ago, this government poultry house retains ambience and is a strongly contributing building. Lower vent windows have been covered. The roof has partially collapsed. (See Photos #7 and 8.)

F. Type 411:12 Government Barn. The exterior of this rather ubiquitous (at Osage Farms) government barn type is relatively intact but the unaltered interior is of primary interest. The threshing window covering is missing and the front entrance appears to have been enlarged. Inside, the animal stalls are intact and apparently original. (See Photos #7, 8, 10, 11 and 13.)

When completed by the RA/FSA, Unit No. 8 consisted of 69.867 acres. Unit No. 9 covered 72.157 acres. Later in the project, these tracts were partially consolidated. The farmsteads were part of a contiguous grouping of at least four individual government farmsteads. The dairy nucleus of Hillview, a part of Osage Farms featuring collectivized agriculture, was approximately 2.5 miles south of Units No. 8 and 9. Today the rural flavor that prevailed during the resettlement project persists despite paving of the highway and a sprinkling of modern buildings over the landscape.

As a group, the district buildings successfully portray the appearance of contiguous government farmsteads during the 1937-43 period when scores of Missourians were relocated and rehabilitated at Osage Farms. While each building is an easily recognizable example of its type, some are exceptional--particularly the Type 411:12 government barns and the government food storage building. The most altered building is the Type 315:13 government farmhouse, but its design and historic materials are intact and the few changes are readily reversible. Integrity requirements as defined in the cover document ("Osage Farms Resettlement Properties in Pettis County, Missouri: Contiguous Farmstead Historic Districts") are fully met. The Type 315:13-government farmhouse is sufficiently intact for it to be a contributing building within a district.



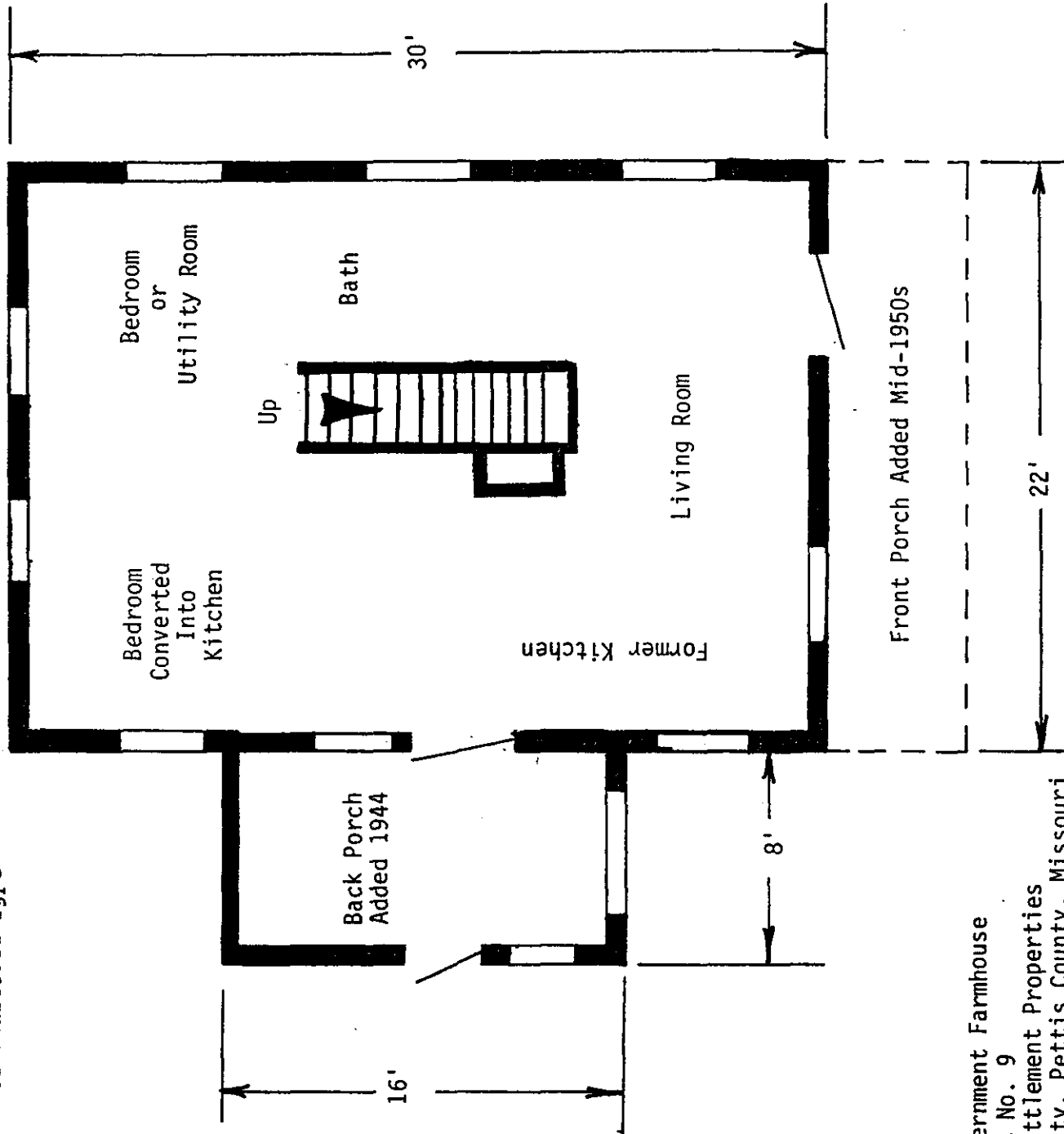
Site Map: Osage Farms Resettlement Properties

5 = Photo number and view

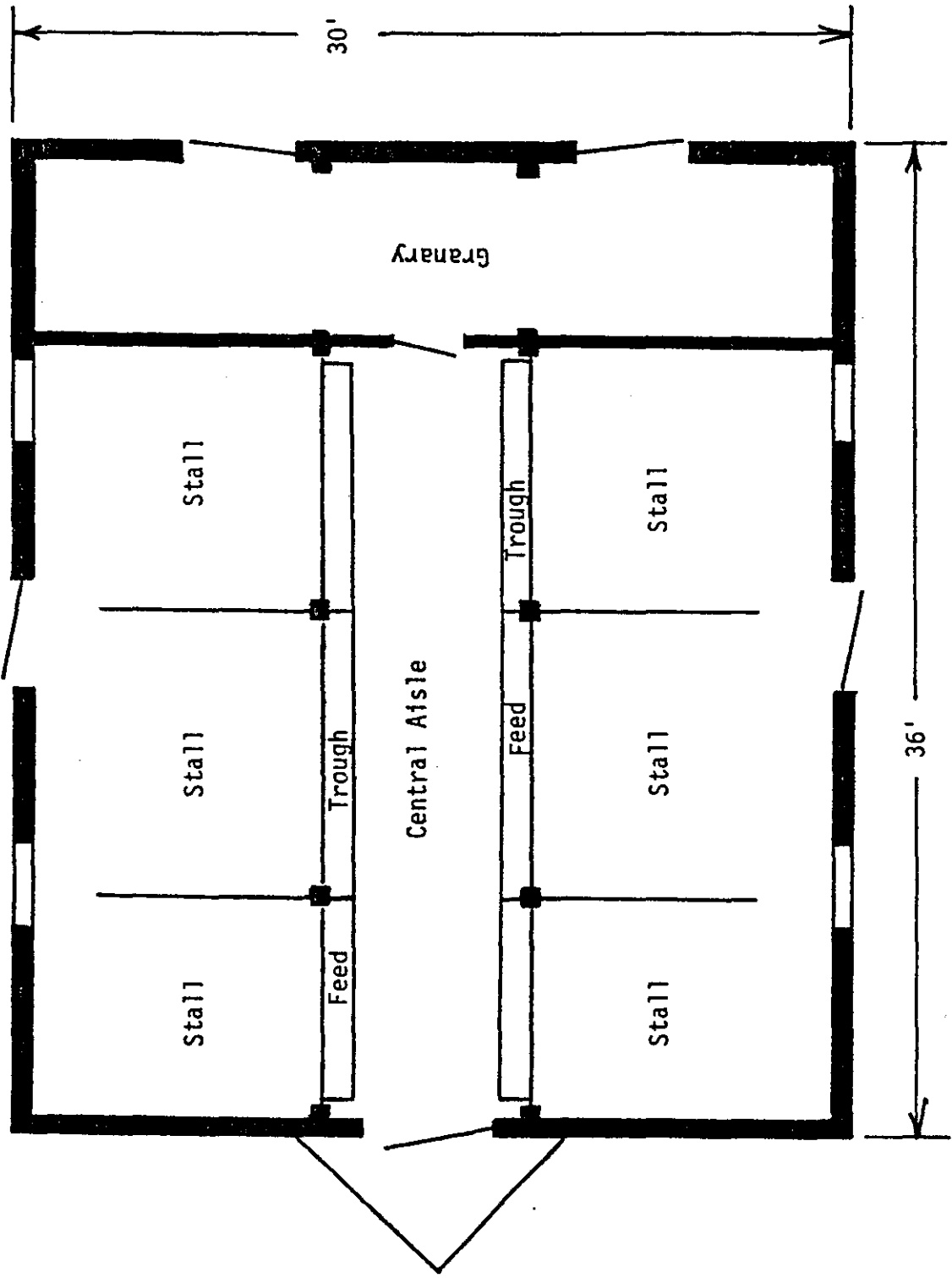


OSAGE FARMS UNITS NO. 8 & NO. 9 HISTORIC DISTRICT
HOUSTONIA VICINITY, PETTIS COUNTY, MISSOURI

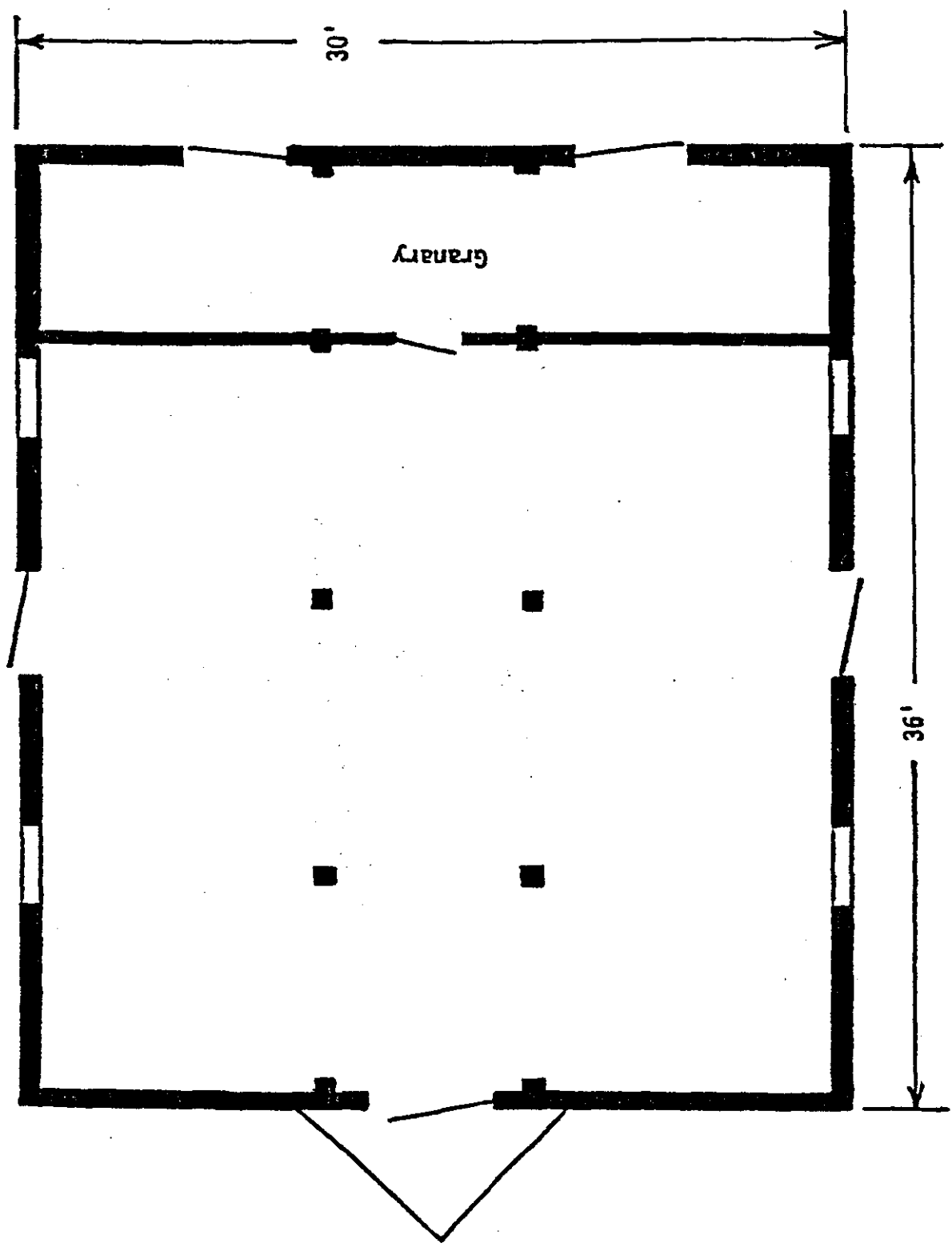
(See Multiple Property Documentation
Form for floor plan of unaltered Type
315:13 House)



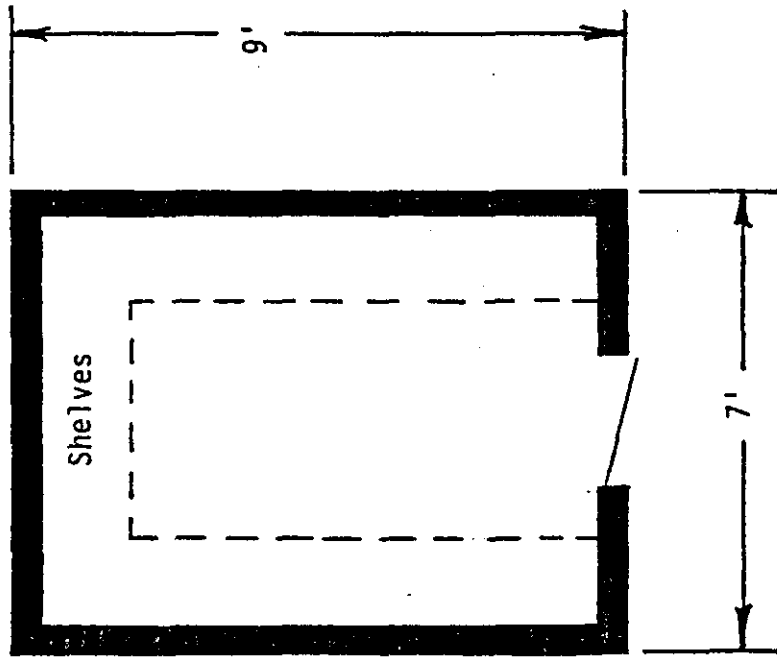
Type 315:13 Government Farmhouse
Osage Farms Unit No. 9
Osage Farms Resettlement Properties
Houstonia Vicinity, Pettis County, Missouri



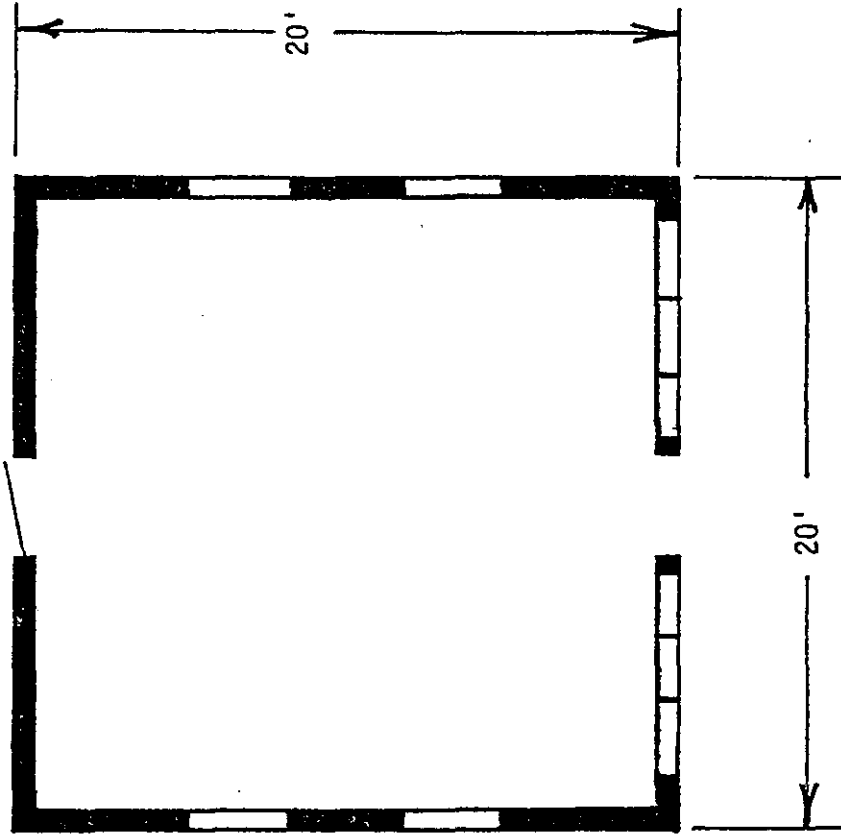
Floor Plan : Type 411:12 Barn
 Osage Farms Unit No. 9
 Osage Farms Resettlement Properties
 Houstonia Vicinity, Pettis County, Missouri



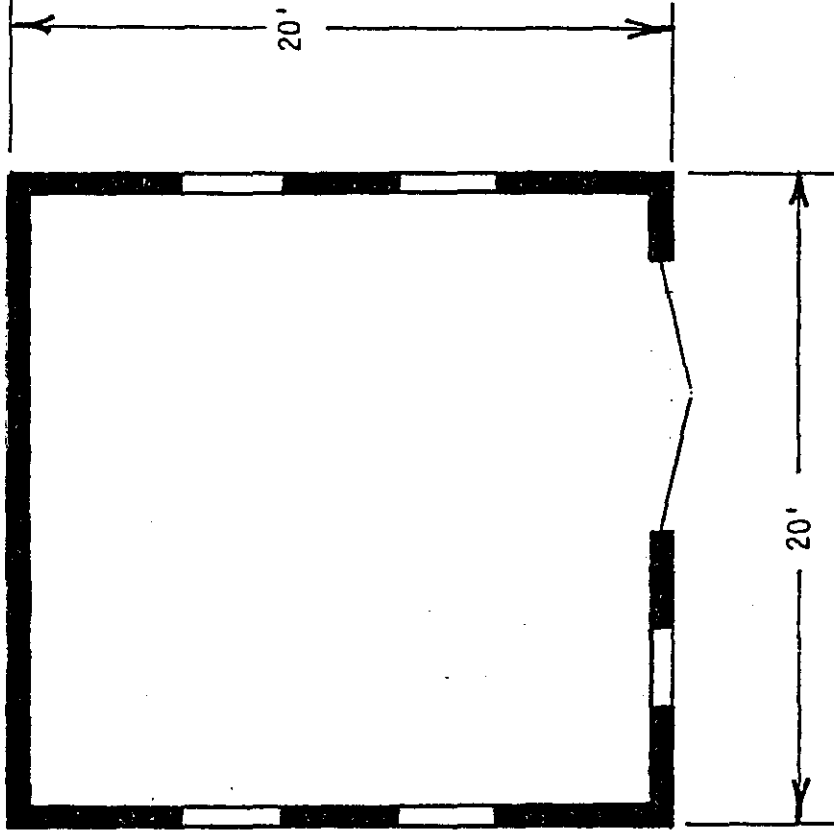
Type 411:12 Barn
Osage Farms Unit No. 8
Osage Farms Resettlement Properties
Houstonia Vicinity, Pettis County, Missouri



Floor Plan: Food Storage Building
Osage Farms Unit No. 9
Osage Farms Resettlement Properties
Houstonia Vicinity, Pettis County, Missouri



Floor Plan: Type 4110:14 Poultry House
Osage Farms Unit No. 8
Osage Farms Resettlement Properties
Houstonia Vicinity, Pettis County, Missouri



Floor Plan: Type 4110:14 Poultry House (Typical Garage Conversion)
Osage Farms Unit No. 9
Osage Farms Resettlement Properties
Houstonia Vicinity, Pettis County, Missouri

(See Multiple Property Documentation
Form for floor plan of unaltered Type
4110:14 Poultry House)

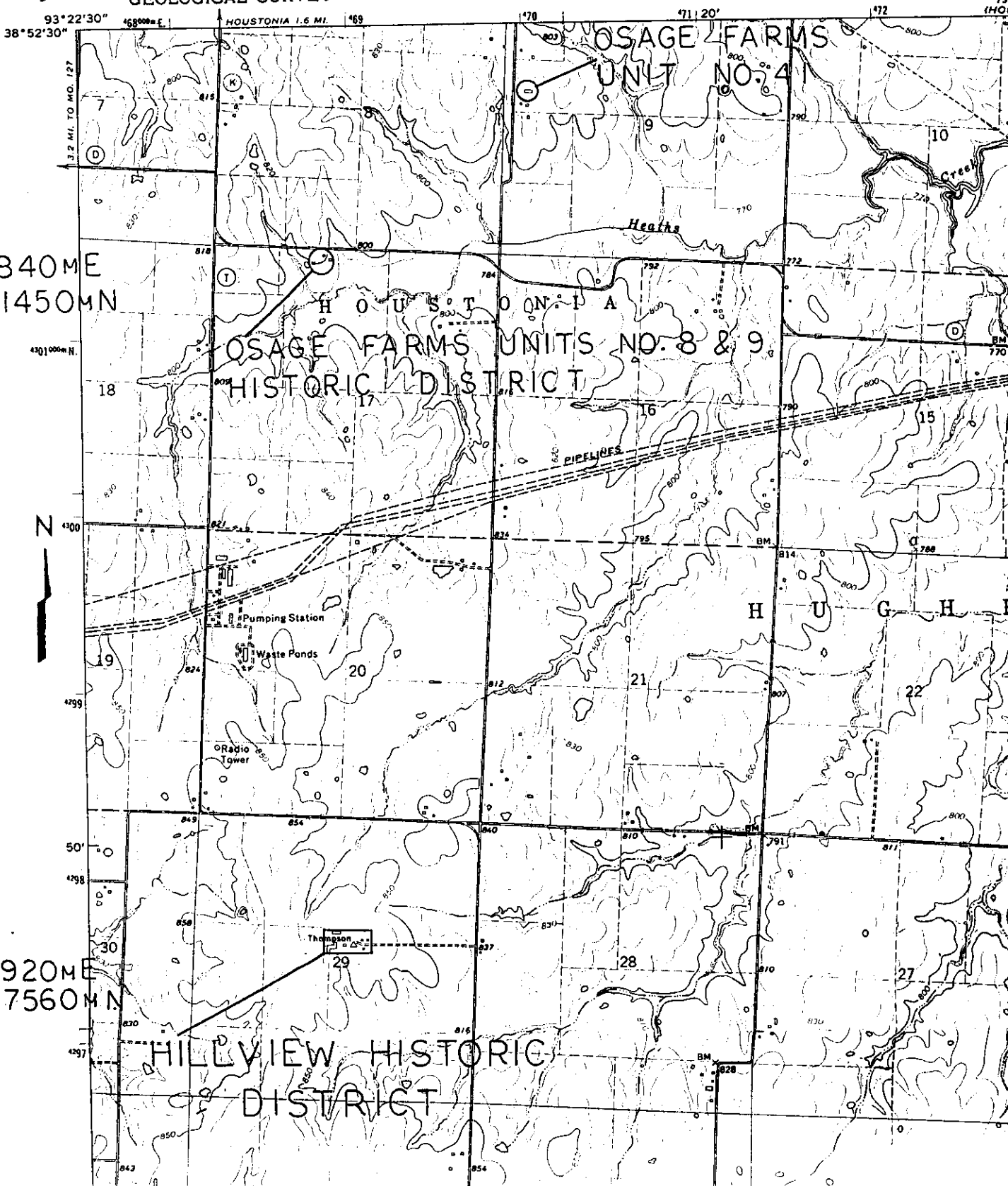
281 14 NW
SWEET SPRINGS

UNITED STATES
DEPARTMENT OF THE INTERIOR
GEOLOGICAL SURVEY

15470040ME
154302360MN

15468840ME
154301450MN

15468920ME
154297560MN



United States Department of the Interior
National Park Service

RECEIVED

HR

NOV 12 1991

DIRECTOR'S OFFICE
DPRH

National Register of Historic Places Continuation Sheet

Section number _____ Page _____

SUPPLEMENTARY LISTING RECORD

NRIS Reference Number: 91001400

Date Listed: 9/27/91

Osage Farms Units No. 8 & No. 9 Hist. Dist.,	Pettis Co.,	MO
Property Name	County	State

Osage Farms Resettlement Properties in Pettis County MPS
Multiple Name

This property is listed in the National Register of Historic Places in accordance with the attached nomination documentation subject to the following exceptions, exclusions, or amendments, notwithstanding the National Park Service certification included in the nomination documentation.

Beth Boland
Signature of the Keeper

9/27/91
Date of Action

=====
Amended Items in Nomination:

According to the acreage estimator, the USGS boundary encompasses more than one acre, not less than one acre as cited in Section 10 of the nomination form. The correct acreage is approximately 1.2 acres.

This information was provided by Steve Mitchell of the Missouri SHPO.

DISTRIBUTION:

- National Register property file
- Nominating Authority (without nomination attachment)

OSAGE FARMS UNITS NO. 8 AND NO. 9
HOUSTONIA, MO., VICINITY

R. MASERANG

1/90

SHOW-ME RPC

OVERALL SITE VIEW, FACING SE

#1



OSAGE FARMS, UNITS #8 & #9

HOUSTONIA VICINITY, MO.

R. MASERANG

1/90

SHOW-ME RPC

REAR & SIDE, TYPE 411:12

BARN, FACING NE

#2



OSAGE FARMS UNIT NO. 8
HOUSTONIA, MO., VICINITY
R. MASERANG

9/89

SHOW-ME RPC

FORMER TYPE 4110:14 POULTRY HOUSE,

TYPE 4111:12 BARN (FACING SW)

#3



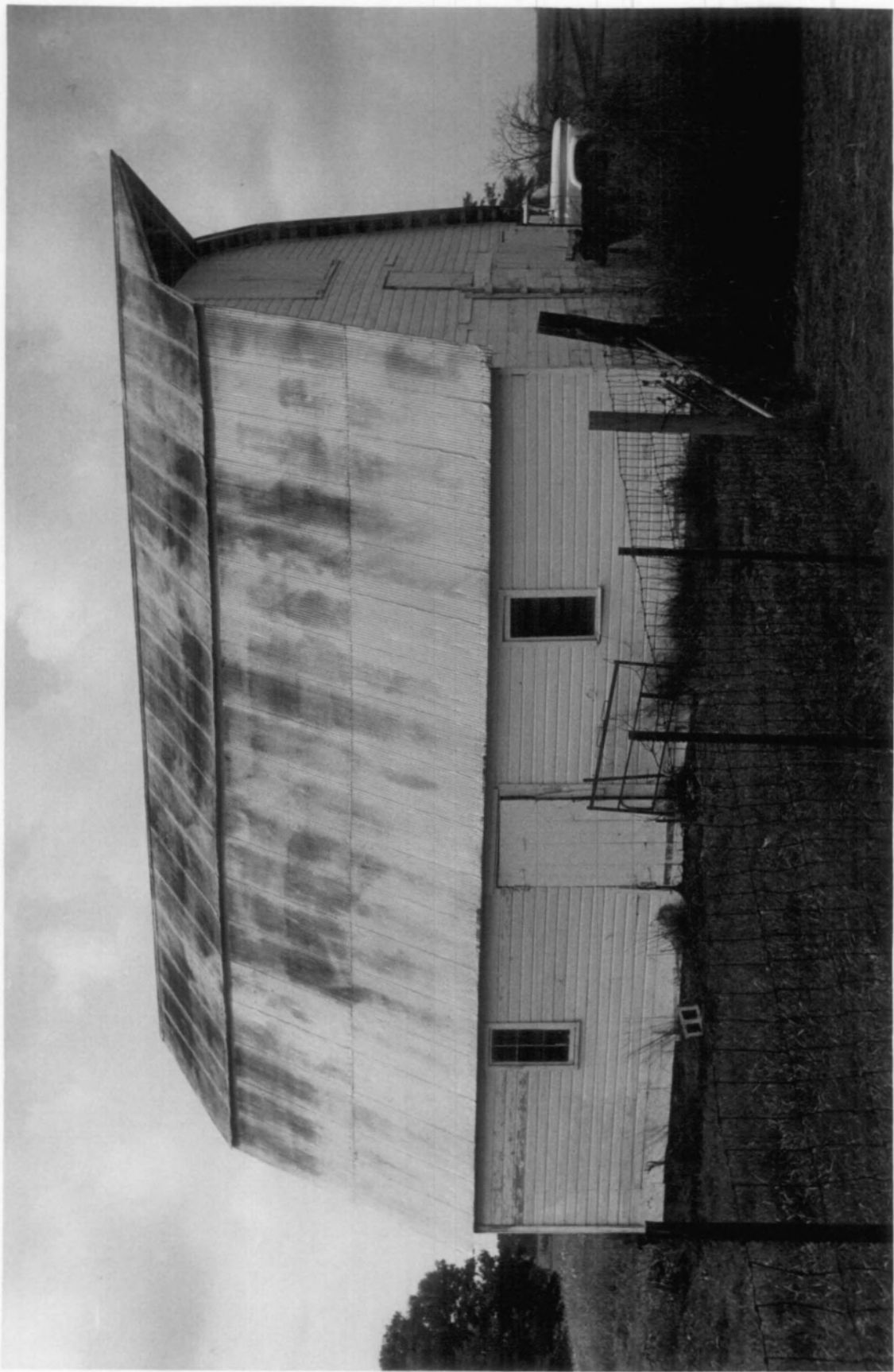
OSAGE FARMS UNIT No. 8
HOUSTONIA, MO., VICINITY
R. MASERANG

9/89

SHOW-ME RPC

SIDE & FRONT VIEW, TYPE 411:12 BARN,
FACING SW

#4



OSAGE FARMS UNIT NO. 9
HOUSTONIA VICINITY, MO.
R. MASERANG

9/89

SHOW-ME RPC

FRONT W SIDE, TYPE 315:13 HOUSE,

FACING SE

5



OSAGE FARMS UNIT NO. 9
HOUSTONIA, MO., VICINITY
R. MASERANG

9/89

SHOW-ME RPC

EAST + NORTH FACADES, TYPE 3/5:13 HOUSE WITH
ADDITION

#6



OSAGE FARMS UNIT NO. 9
HOUSTONIA, MO., VICINITY
R. MASERANG
9/89
SHOW-ME RPC
EAST END OF SITE, FACING SW
#7



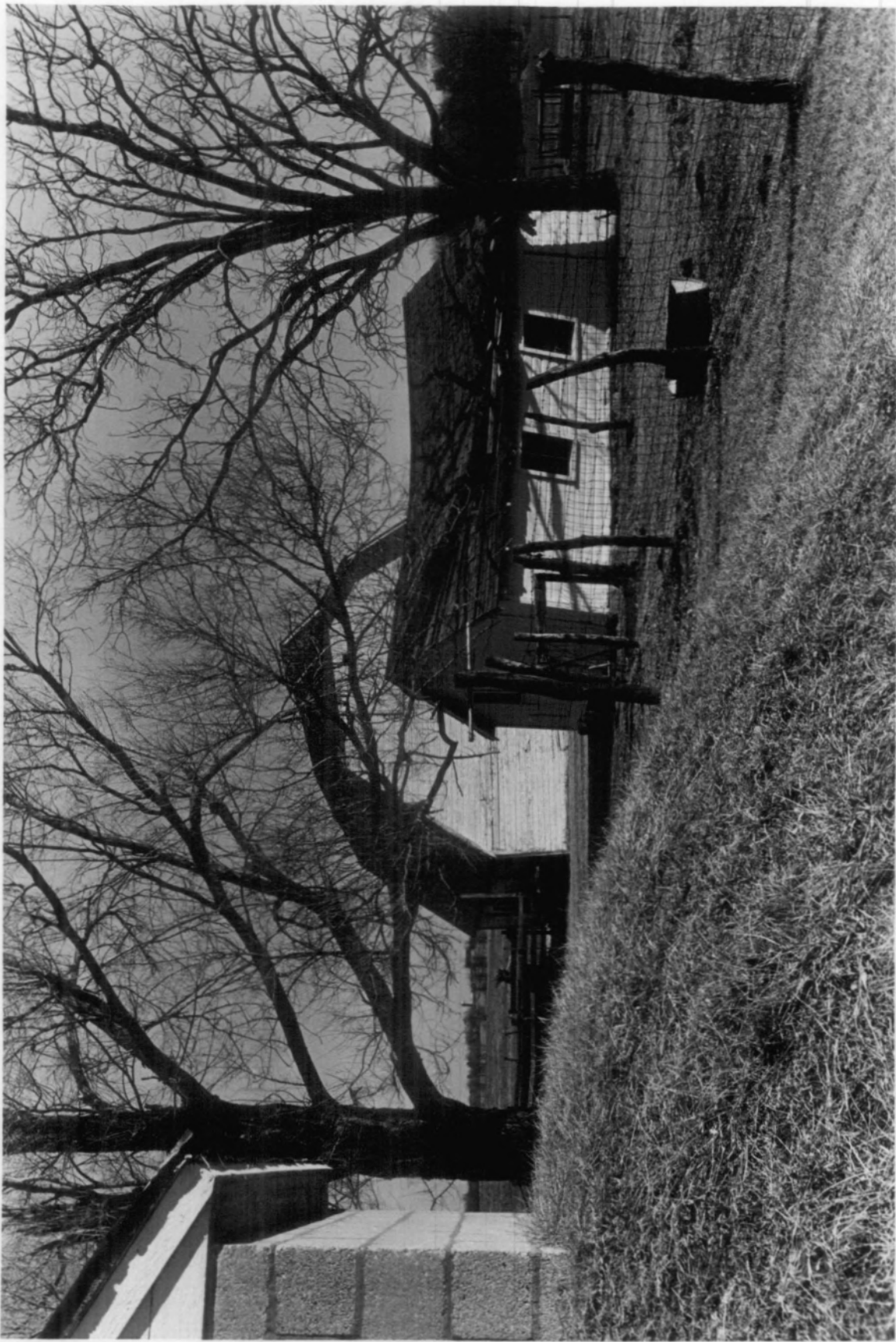
OSAGE FARMS UNIT NO. 9
HOUSTONIA, MO., VICINITY
R. MASERANG

1/90

SHOW-ME RPC

WEST FACADES OF FOOD STORAGE BUILDING,
POUNTRY HOUSE & BARN (FACING E)

#8



OSAGE FARMS UNIT NO. 9

HOUSTONIA, MO., VICINITY

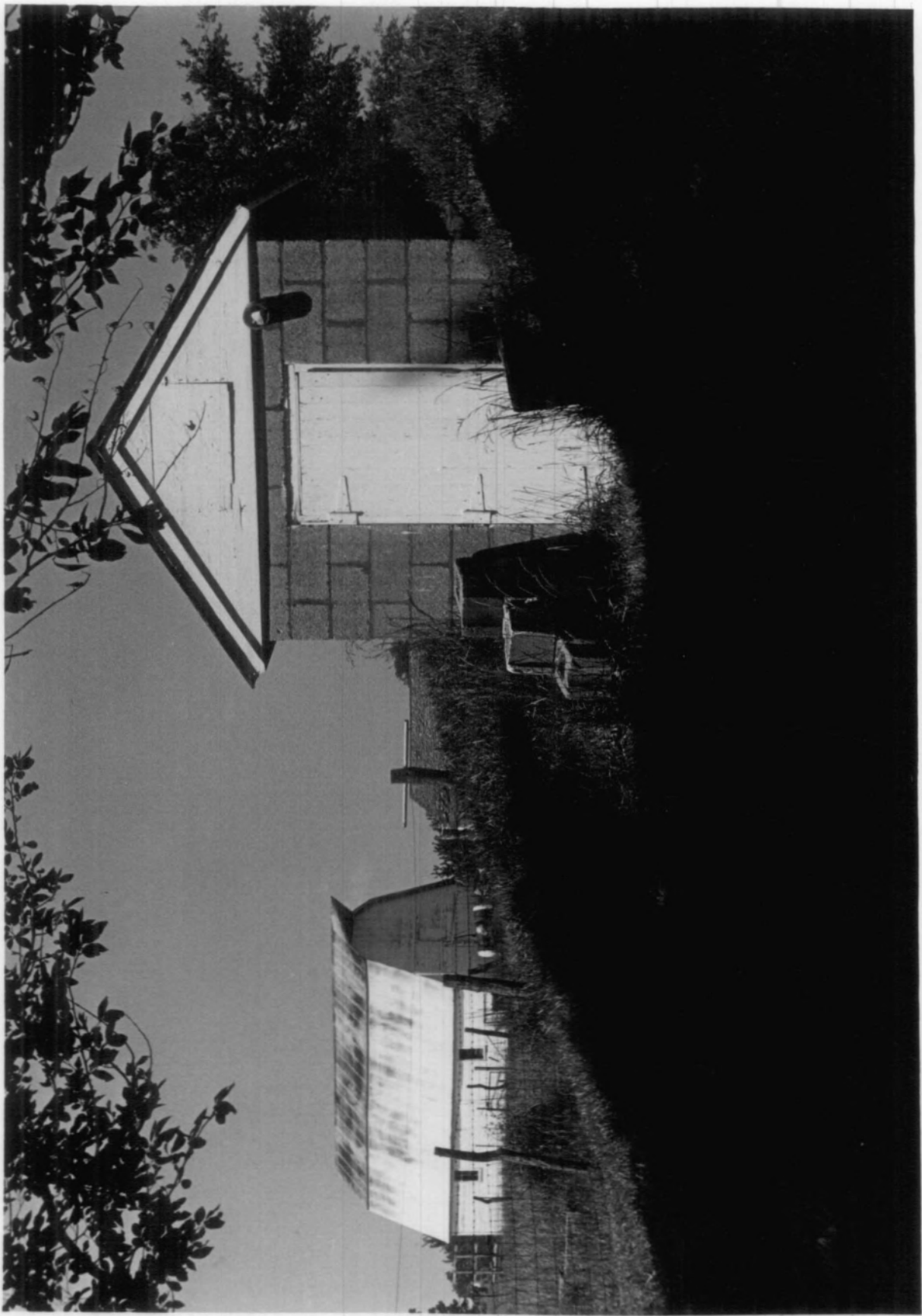
R. MASERANG

9/89

SNOW-ME RAC

FOOD STORAGE BUILDING, FACING WEST

9



OSAGE FARMS UNIT NO. 9

HOUSTONIA, MO., VICINITY

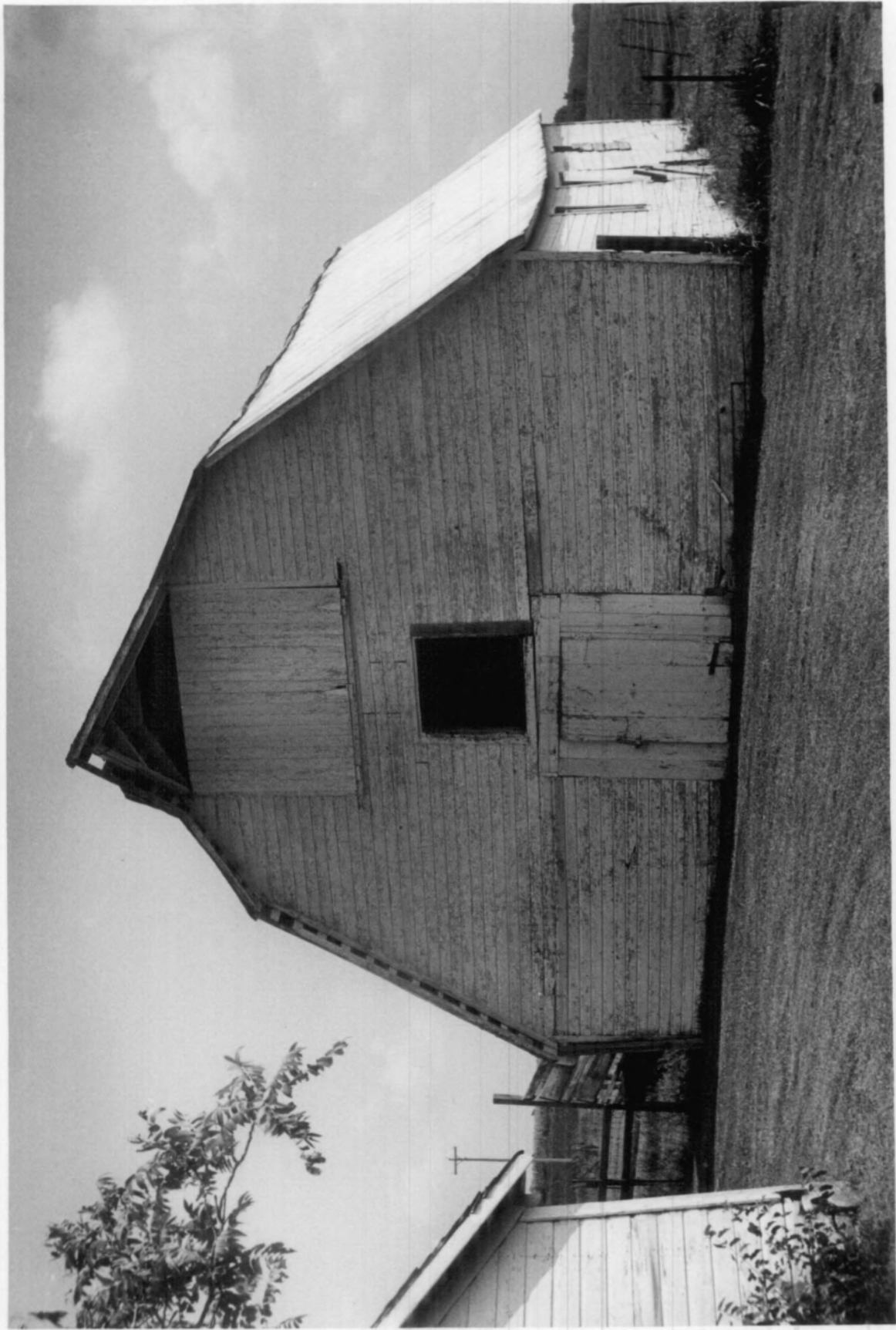
R. MASERANG

9/89

SHOW-ME RPC

FRONT FACADE, TYPE 411:12 BARN, FACING E

#10



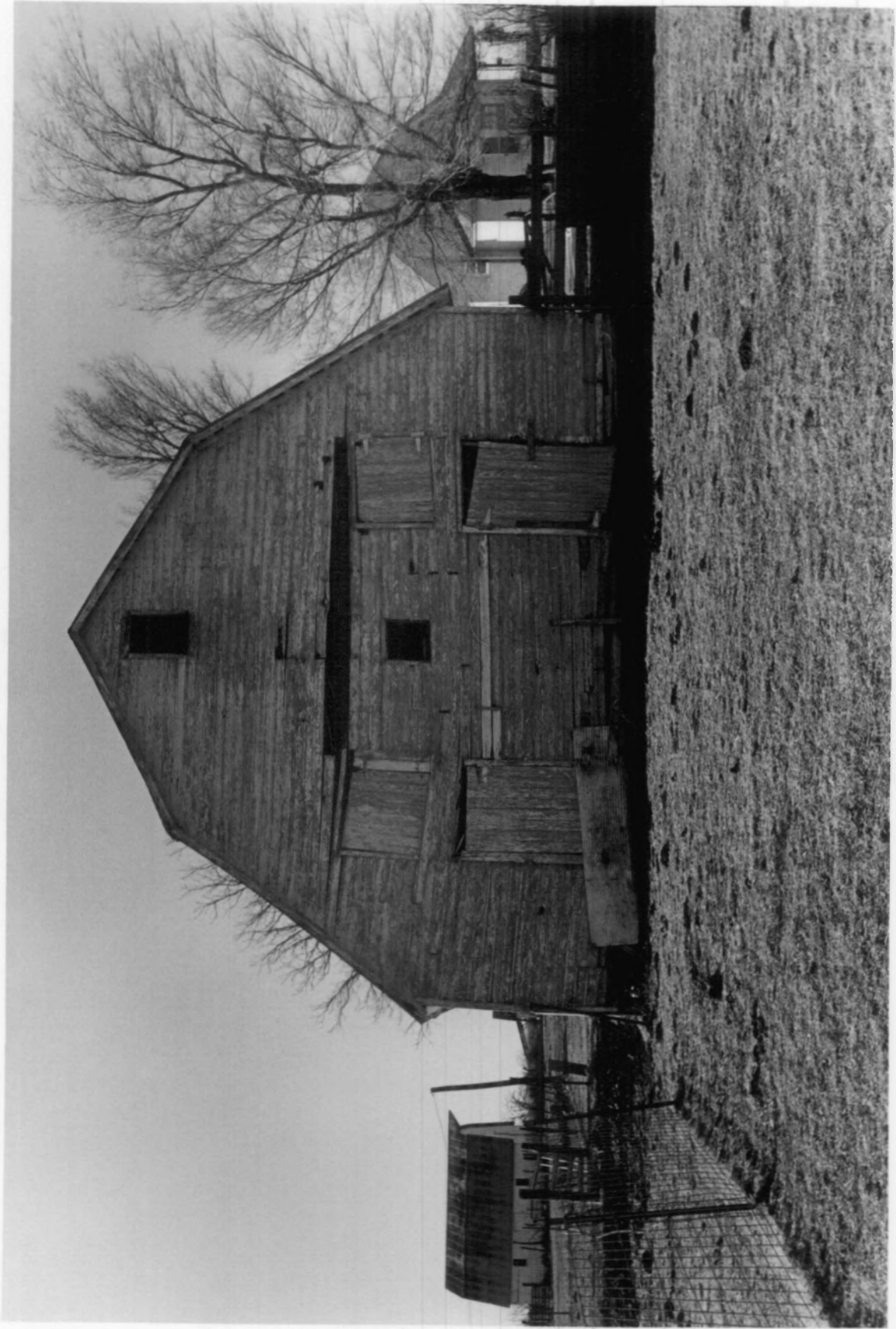
OSAGE FARMS UNITS NO. 8 & NO. 9
HOUSTONIA, MO., VICINITY

R. MASERANG

1/90

SHOW-ME RPC
REAR FACADE, TYPE 411:12 BARN (UNIT NO. 8), FACING W

#11



OSAGE FARMS UNIT NO. 8
HOUSTONIA, MO., VICINITY

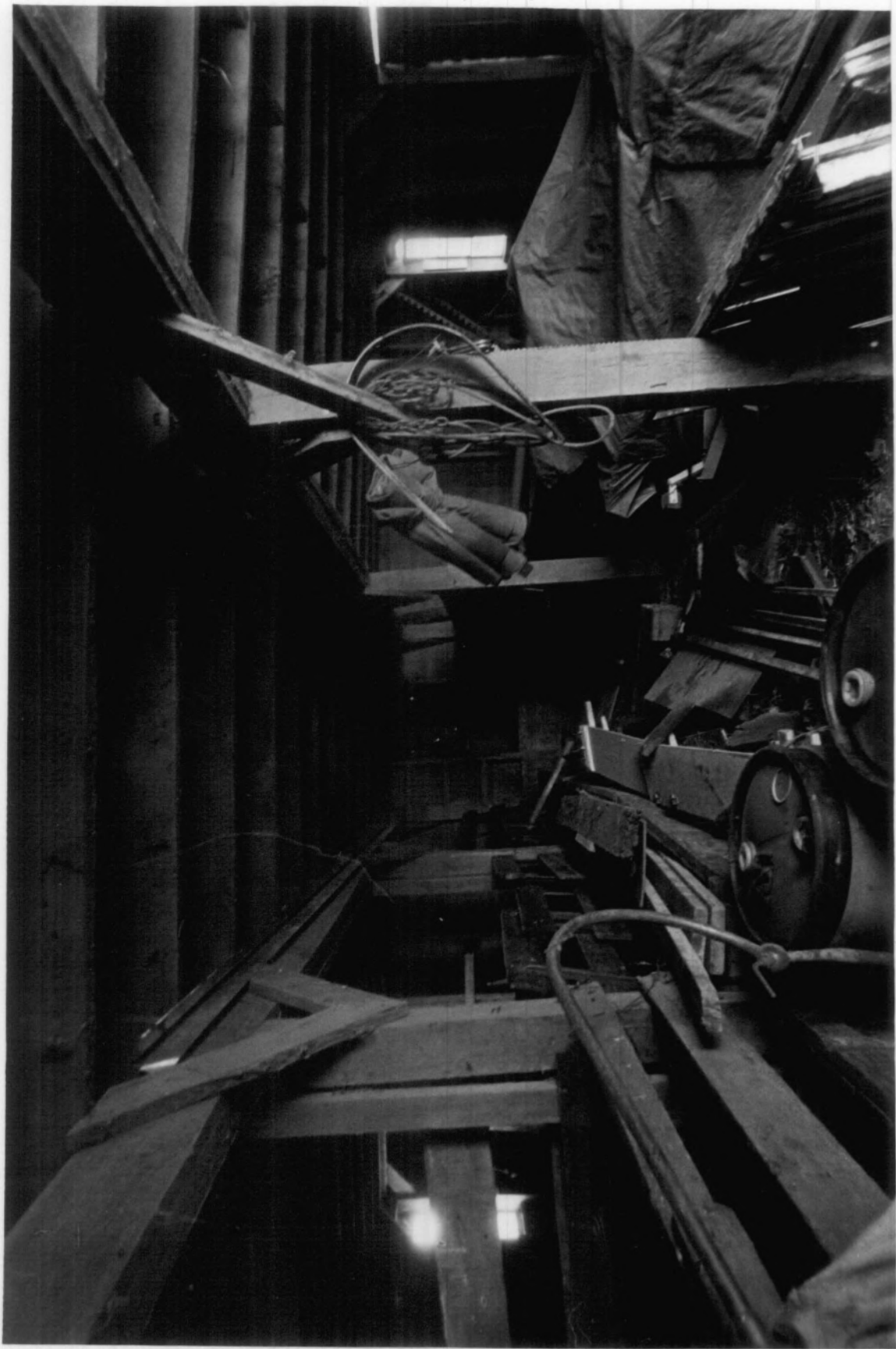
R. MASERANO

1/90

SHOW-ME RPC

CENTRAL AISLE, TYPE 411:12 BARN, FACING
REARWARD (SOUTH)

#12



OSAGE FARMS UNIT NO. 9
HOUSTONIA, MO., VICINITY
R. MASERANG

1/19

SHOW-ME RPC
CENTER AISLE, TYPE 411:12 BARN, FACING REAR-
WARD (EAST)

#13

