

Mount Cabanne/ Raymond Place Historic District

originally drawn as "Architectural Survey of Union Sarah: West"
APRIL 1997 ST. LOUIS, MISSOURI

LANDMARKS ASSOCIATION OF ST. LOUIS
FOR THE COMMUNITY DEVELOPMENT AGENCY

REVISED: DEC. 1998

LEGEND:

ARCHITECTS
(BUILDERS)

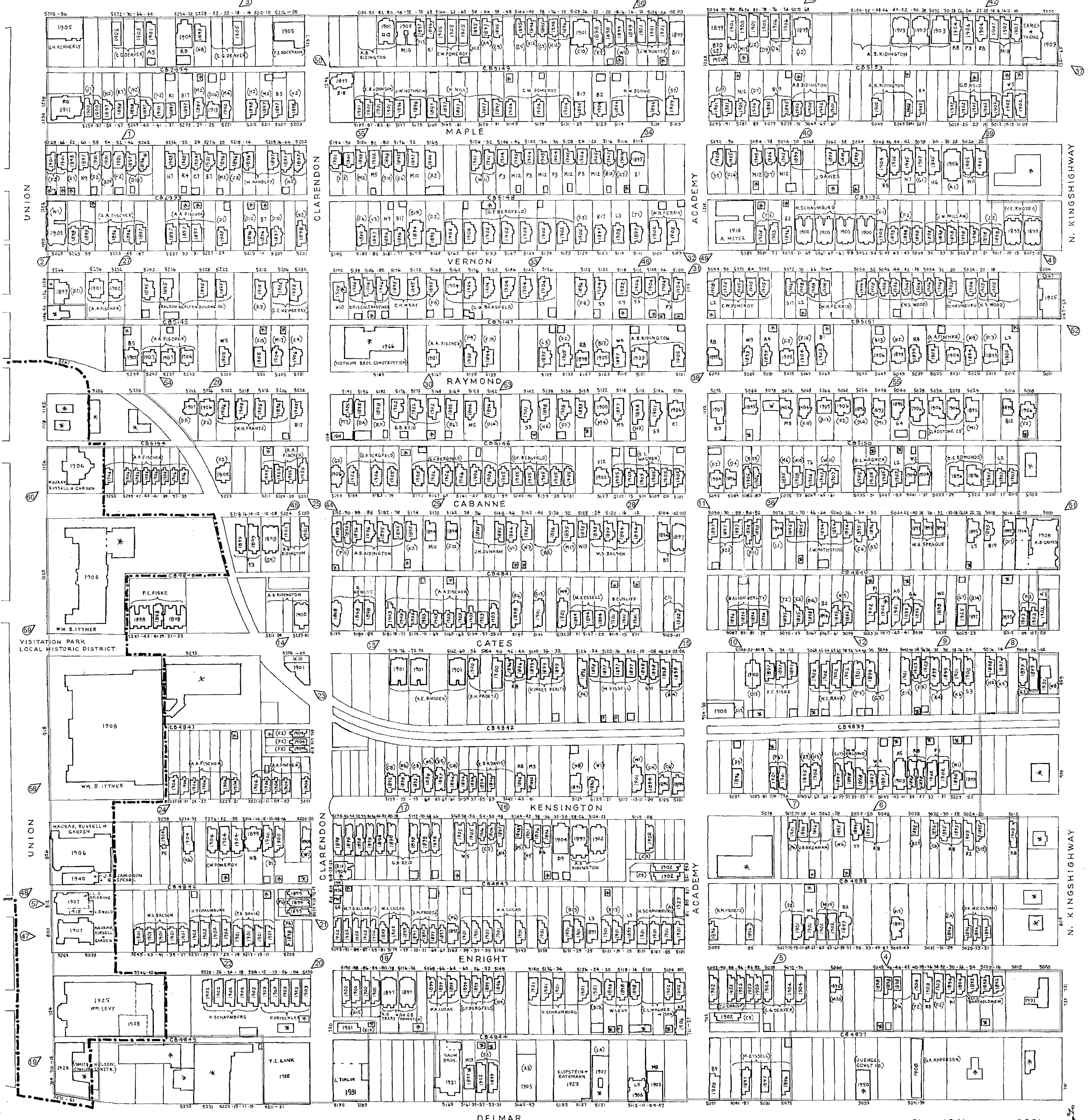
* noncontributing

--- CERTIFIED LOCAL HISTORIC DISTRICT

----- National Register Boundary

MAP: PAT HAYS BAER

Revised 2/2002 by Lynn Josse for the Cultural Resources Office of the City of St. Louis



- | | |
|---|---|
| (A1) ABRAHAMS, SOL + SON | (U1) JOHNSON, ELI B. |
| (A2) ABRAHAM, THOMAS | (U2) JONES, ISAAC |
| (A3) AIMEE REALTY CO. | (U3) JUENGL CONSTRUCTION CO. |
| (A4) ALBRIGHT + LOTT | (U4) KELLOGG + SON |
| (A5) ALLARD, MAY T.O. | (U5) KENNEDY + MATTHIAS |
| (A6) ANDERSON, GORDON A. | (U6) KENNERLY, GEORGE H. |
| (A7) ANFENGER, LOUIS E. | (U7) KINSEY REALTY + BUILDING CO. |
| (A8) BAKER + KNEEL | (U8) KINSEY, JOHN H. |
| (A9) BAKER, ALFRED M. | (U9) KINSEY, WILLIAM A. |
| (A10) BALSON REALTY + BUILDING CO. | (U10) KLIPSTEIN + RATHMANN |
| (A11) BALSON, WILLIAM L. | (U11) KLUTH, VICTOR J. |
| (A12) BALSON, WILLIAM S. | (U12) KOHLMAYER, FREDERICK + SONS |
| (A13) BARNETT + HAYNES | (U13) LAWTON, JOSEPH D. |
| (A14) BARNETT, HAYNES + BARNETT | (U14) LEE, THOMAS C. |
| (A15) BARTHOLOMEW, REV. OTHNIEL A. | (U15) LEVY, WILLIAM A. |
| (A16) BECKER, GERHARD | (U16) LUCAS, WILLIAM A. |
| (A17) BEETZ, HENRY | (U17) LYNCH, JAMES H. |
| (A18) BENKE, AUGUST M. | (U18) MACKIE, JAMES H. |
| (A19) BENNETT + WRAY | (U19) MARLATT, ELIAS S. |
| (A20) BERGFELD, GEORGE F. | (U20) MARLEY, THOMAS F. |
| (A21) BERNARD, REV. TAYLOR | (U21) MARTIN, R. SHARP |
| (A22) BIERMANN + AHRING | (U22) MATTHEWS + CLARK |
| (A23) BISSER, PAUL A. | (U23) MATTHIAS, FREDERICK B. |
| (A24) BOEHMER, OTTO J. | (U24) MAULE, EVERT P., JR. |
| (A25) BONWITZ, FREDERICK C. | (U25) MAY, CHARLES F. |
| (A26) BOONE, HEZEKIAH W. | (U26) MCLEIN, CHARLES |
| (A27) BORMANS, WILLIAM A. | (U27) MCMAHON, WILLIAM P. |
| (A28) BOTHE + RATERMANN | (U28) MCNAMARA, JAMES H. |
| (A29) BOUGHTON, GEORGE B. | (U29) MEAGHER, JAMES D. |
| (A30) BRENNAN, DANIEL B. | (U30) MEAGHER, PATRICK F. + SONS |
| (A31) BREWSTER-AMES BUILDING CO. | (U31) NEWBERRY, ALBERT |
| (A32) BROWN, JAMES W. | (U32) WILLIAM, JAMES W. |
| (A33) BURDEAU, GEORGE | (U33) MILLIGAN + WRAY |
| (A34) CANN, WILLIAM A. | (U34) MITCHELL, GEORGE W. |
| (A35) CAUGH, LAWRENCE H. | (U35) MOUNTS, WILLIAM P. |
| (A36) CHAPLINE, GEORGE G. | (U36) MURCH BROS. CONSTRUCTION CO. |
| (A37) CHARLEVILLE, BENJAMINE J. | (U37) MURPHY, JOSEPH X. |
| (A38) CHRIST, THOMAS J. | (U38) NAGLE, PIERRE |
| (A39) CLARK, JOHN B. + SON | (U39) NEWBERRY, CHARLES C. |
| (A40) CLYMER, HARRY G. | (U40) NEWELL, JAMES P. |
| (A41) CONNOLLY, MARTIN | (U41) NICOLSON, DAVID K. |
| (A42) CONZELMAN, RUSSELL A. | (U42) NICOLSON, THEODORE |
| (A43) CROTTY, JOSEPH M. | (U43) NOLAN, PATRICK |
| (A44) CUNLIFF + PAPE | (U44) NOLTE, EDWARD F. |
| (A45) CUNLIFF, BENJAMIN | (U45) NOODAN, BERNARD |
| (A46) CUNLIFF, CHARLES | (U46) NOTHMAN, JACOB W. |
| (A47) DARR, FREDERICK E. A. | (U47) NOTHMAN BROS. CONSTRUCTION CO. |
| (A48) DAVIES, JOHN P. | (U48) PAUL, PAUL P. |
| (A49) DAVIS, CHARLES R.H. | (U49) PERKS, HARRY M. |
| (A50) DAVIS, PAUL B. | (U50) POMEROY, CHESTER W. |
| (A51) DEAN, ROBERT A. | (U51) POMEROY, SAMUEL S. |
| (A52) DEAVEY, GEORGE G. | (U52) PREISLER, ERNST |
| (A53) DENHAM, WILLIAM L. | (U53) PROTZ, BERNARD M. |
| (A54) DICE, JOHN M. | (U54) PUTNEY, LEONARD D. |
| (A55) DILSCHNEIDER, HENRY | (U55) RANKIN, JAMES C. |
| (A56) DOUGHERTY, CORNELIUS | (U56) RAPP, THEODORE |
| (A57) DRISCHLER + ELSNER | (U57) RAUB, WARREN C. |
| (A58) DRISCHLER, FRANCIS | (U58) REID, GEORGE B. |
| (A59) DUFFNER, HENRY A. | (U59) REMMERS, HARRY J. |
| (A60) DUNAWAY, THOMAS S. J. | (U60) RICHARDS, JACOB E. |
| (A61) DUNHAM, JOHN M. | (U61) RICHARDSON, WILLIAM |
| (A62) DUNN, ROBERT R. | (U62) RIDINGTON, A. BLAIR |
| (A63) DUNNING, JESSE L. + SON | (U63) ROBERTS, THOMAS |
| (A64) EAMES + YOUNG | (U64) RUFF, ALBERT I. |
| (A65) EDMUNDS, BERNARD C. | (U65) RUTLEDGE + EDWARDS |
| (A66) ENDERS, OSCAR | (U66) SAUM BROS. |
| (A67) ENROBUEGGER + BEUMER | (U67) SCHAEFER, BEN J. |
| (A68) ESLINGER, JESSE W. + GLASSCOCK, THOMAS J. | (U68) SCHUMACHER, WILLIAM A. |
| (A69) EVANS, LEWIS J. | (U69) SCHUMACHER, HENRY, JR. |
| (A70) EYSEL, MORITZ | (U70) SHIPLEY, HOWARD H. |
| (A71) FERRIS, WILLIAM H. | (U71) SHISLER, ROBERT G. |
| (A72) FISCHER, ALEXANDER AUGUST | (U72) SHULMAN, JULIUS |
| (A73) FISKE, FREDERICK C. | (U73) SPRADUE, JESSE L. |
| (A74) FLANERY, THOMAS | (U74) SPRAGUE, JOHN E. |
| (A75) FRANTZ, ALBERT W. | (U75) SPRAGUE, WILLIAM A. |
| (A76) FRANTZ, ALBERT W. + LOUIS M. | (U76) ST. LOUIS BOARD OF EDUCATION |
| (A77) FRANTZ, CHRISTOPHER A. | (U77) STINDE BROS. REAL ESTATE |
| (A78) FRANTZ, FREDERICK L. | (U78) SUTHERLAND, WILLIAM M. |
| (A79) FRANTZ, LOUIS | (U79) SWARTING, G. WILLIAM |
| (A80) FRANTZ, WILLIAM | (U80) TAGGART, FRANCIS S. |
| (A81) FRIDRICH, JOHN A. | (U81) TAYLOR, FRED + SON |
| (A82) FRIDRICH, OTTO P. | (U82) TAYLOR, ROBERT |
| (A83) FULFORD, ROBERT | (U83) TERRY, ALBERT G. AND/OR BOUGHTON, GEORGE B. |
| (A84) FUQUA, THOMAS B. | (U84) TORRENCE, JAMES |
| (A85) GEORGE, G.H. | (U85) TRABER, OLIVER R.S. |
| (A86) GLADSTONE INVESTMENT CO. | (U86) VICKERY, HENRY |
| (A87) GORDES, CHARLES | (U87) GRABLE, WEBER + GROVES |
| (A88) GRABLE, WEBER + GROVES | (U88) VROOMAN, CLAUDE E. |
| (A89) GRACE, PATRICK F. | (U89) WAGNER, ERNEST L. + SON |
| (A90) GRUEN, WILLIAM H. | (U90) WAGNER, HENRY A. |
| (A91) GUARANTEE CONSTRUCTION CO. | (U91) WEBER + GROVES |
| (A92) GUEDRY, JOSEPH L. | (U92) WEBB, JOHN L. |
| (A93) GROVES, ALBERT B. | (U93) WESTLAKE, JAMES L. + BARWICK, OLIVER |
| (A94) HACKMANN, FRANK X. | (U94) WIDMANS, HENRY |
| (A95) HANBLEY, WILLIAM | (U95) WILLIAMS, J.E. CONSTRUCTION CO. |
| (A96) HANDLEY, GEORGE A. | (U96) WIPPLER, MARTIN |
| (A97) HARMAN, EDWARD W. | (U97) WOOD, NATHANIEL S. |
| (A98) HENCKE, RICHARD | (U98) WOODLING, CHARLES F. |
| (A99) HENNING + JAHNICHEH | (U99) WRAY, CHARLES H. |
| (A100) HESS, ERNEST J. | (U100) ZELLE, JULIAN T. |
| (A101) HIGGINS, THOMAS C. | |
| (A102) HILL, NOBLEST | |
| (A103) HOLLOWAY, CHARLES S. | |
| (A104) HORMANN, LOUIS | |
| (A105) HUNTER, JAMES | |

