

UNITED STATES DEPARTMENT OF THE INTERIOR
NATIONAL PARK SERVICE

FOR NPS USE ONLY	SITE FILE COPY
RECEIVED	
DATE ENTERED	

**NATIONAL REGISTER OF HISTORIC PLACES
INVENTORY -- NOMINATION FORM**

SEE INSTRUCTIONS IN *HOW TO COMPLETE NATIONAL REGISTER FORMS*
TYPE ALL ENTRIES -- COMPLETE APPLICABLE SECTIONS

1 NAME

HISTORIC

Missouri State Capitol Historic District

AND/OR COMMON

Missouri State Capitol Historic District

2 LOCATION

STREET & NUMBER

Boundaries as shown on the Site Plan Map

CITY, TOWN

Jefferson City

VICINITY OF

#8 - Hon. Richard H. Ichord

STATE

Missouri 65101

CODE

29

COUNTY

Cole

CODE

051

3 CLASSIFICATION

CATEGORY

☒ DISTRICT
☐ BUILDING(S)
☐ STRUCTURE
☐ SITE
☐ OBJECT

OWNERSHIP

☐ PUBLIC
☐ PRIVATE
☒ BOTH
PUBLIC ACQUISITION
☐ IN PROCESS
☐ BEING CONSIDERED

STATUS

☒ OCCUPIED
☐ UNOCCUPIED
☐ WORK IN PROGRESS
ACCESSIBLE
☒ YES: RESTRICTED
☐ YES: UNRESTRICTED
☐ NO

PRESENT USE

☐ AGRICULTURE
☒ COMMERCIAL
☒ EDUCATIONAL
☐ ENTERTAINMENT
☒ GOVERNMENT
☐ INDUSTRIAL
☐ MILITARY
☒ MUSEUM
☐ PARK
☒ PRIVATE RESIDENCE
☒ RELIGIOUS
☐ SCIENTIFIC
☒ TRANSPORTATION
☐ OTHER

4 OWNER OF PROPERTY

NAME

Multiple public and private

STREET & NUMBER

CITY, TOWN

Jefferson City

VICINITY OF

STATE

Missouri 65101

5 LOCATION OF LEGAL DESCRIPTION

COURTHOUSE,
REGISTRY OF DEEDS, ETC.

Office of Recorder of Deeds,
Cole County Courthouse

STREET & NUMBER

East corner, Monroe and E. High streets

CITY, TOWN

Jefferson City

STATE

Missouri 65101

6 REPRESENTATION IN EXISTING SURVEYS

TITLE

Missouri State Historical Survey

DATE

1974-1975

☐ FEDERAL ☒ STATE ☐ COUNTY ☐ LOCAL

DEPOSITORY FOR
SURVEY RECORDS

Department of Natural Resources

CITY, TOWN

Jefferson City

STATE

Missouri 65101

7 DESCRIPTION

CONDITION

— EXCELLENT
☒ GOOD
— FAIR

— DETERIORATED
— RUINS
— UNEXPOSED

CHECK ONE

— UNALTERED
☒ ALTERED

CHECK ONE

☒ ORIGINAL SITE
— MOVED DATE _____

DESCRIBE THE PRESENT AND ORIGINAL (IF KNOWN) PHYSICAL APPEARANCE

The Missouri State Capitol Historic District encompasses nine full blocks, portions of seven additional blocks, and the Missouri River levee fronting this area in Jefferson City, Missouri. The historic district is roughly bounded on the northeast by the bank of the Missouri River, on the southeast by the northwest curb of Adams Street, on the southwest by the northeast curb of McCarty Street, and on the northwest by a line passing northwest of St. Peter's School and connecting the southwest boundary and the bank of the Missouri River.

The district contains more than 100 structures of various ages, designs, and functions. It represents a consolidation of five existing entries on the National Register of Historic Places and the incorporation of adjacent commercial, religious, and governmental structures and grounds to form a historic district at the heart of Missouri's seat of government.

The sites previously entered on the Register are: (Numbers refer to locations on the Site Plan Map.)

1. Missouri State Capitol Building and Grounds
2. Governor's Mansion
3. Cole County Historical Society Building (B. Gratz Brown House)
4. (Lohman's Landing) Jefferson Landing Building
5. Cole County Courthouse and Jail-Sheriff's House.

Although the area is not architecturally homogeneous, but rather quite diverse, the common denominator of the district is relatedness to the establishment and development of Missouri's seat of government.

Jefferson City was organized around the Capitol complex. The topography is a series of river bluffs and rolling hills. The bluff promontories were selected as sites for the Capitol Building and the Governor's Mansion to lend prominence to these important structures. The town was oriented parallel to the Missouri River which at this point flows from northwest to southeast.

The district includes the Missouri state government complex, the major portion of the downtown Jefferson City commercial area on High Street, the Missouri-Pacific Railroad Depot (now Amtrak Depot), five churches, and a synagogue. In addition to those buildings already listed on the National Register, the historic district includes the following significant structures: (Numbers refer to locations on the Site Plan Map.)

6. St. Peter's Roman Catholic Church and associated buildings, 216 Broadway, 1881-1883. This German Gothic Revival brick church faces the Capitol Building.
7. St. Peter's Catholic School, 314 West High Street, 1889-1890. Designed by Jefferson City architect Frank B. Miller, this modified Romanesque Revival brick building enhances the church complex. Miller also designed Sites #5, #31, and #45.
8. Margaret Upshulte House, 327 West High Street, ca. 1865. Threatened by urban renewal, this two-story, red brick, German-style house exhibits a good degree of original integrity.

UNITED STATES DEPARTMENT OF THE INTERIOR
NATIONAL PARK SERVICE

**NATIONAL REGISTER OF HISTORIC PLACES
INVENTORY -- NOMINATION FORM**

FOR NPS USE ONLY

RECEIVED

DATE ENTERED

MISSOURI STATE CAPITOL HISTORIC DISTRICT

CONTINUATION SHEET

ITEM NUMBER 7 PAGE 1

9. Broadway State Office Building, south corner of West High Street and Broadway, 1938. This "Moderne"-style state office building is faced with gray limestone.
10. Supreme Court of Missouri, west corner of West High Street and Washington Avenue, 1905-1906. A modified French Renaissance Revival-style, brick and stone structure, it houses the courtrooms and judges' chambers of the Supreme Court and the library and offices of the Missouri Attorney General.
11. United States Post Office and Courthouse, 131-133 West High Street, 1932-1934. Architects Klipstein and Rathmann with Edgerton Swartwout designed this Neo-Classic-style building.
12. Mutual Savings and Loan Association (formerly Merchant's Bank and Neef Terrace buildings), 101 West High Street, ca. 1880's. This Victorian Gothic-style commercial building dominates the west corner of Jefferson and High streets; the Neef Terrace Building has been partially removed.
13. Lohman's Opera House, 102-104 East High Street, ca. 1885. This three-story, Victorian commercial building houses an opera house on the second and third floors. The loss of its crowning cornice and other ornament diminishes the present visual impact. Mercurio's Fruit Market (#102) and Treasure House (#104) occupy the first-floor shops.
14. Meyerhardt's Men's Wear (formerly Tennessee House [a hotel]), 114 East High Street, 1851-1857. A three-story, red brick, commercial building, it is well-maintained with a sympathetic modern treatment at street level. Round-arched windows were added in 1899.
15. C. Gordon Price, 120 East High Street, ca. 1880's. This three-story commercial building with ornate cast-iron lintels is being sympathetically maintained.
16. Tweedie's, 122 East High Street, ca. 1880's. This three-story commercial building has an ornamental molded bronze sheathing on the primary facade. It is well-preserved with a sympathetic modern treatment at street level.
17. Burkel's Shoes, 128 East High Street, 1886. The second story of this commercial structure is in near original condition despite the loss of the cornice; the first story is altered.
18. Brandenberger Drug Store, 130 East High Street, ca. 1890. This commercial building is three stories in height and has ornamental lintels as trim.
19. Exchange National Bank, 132 East High Street, 1926. St. Louis architects Mauran, Russell, and Crowell designed this modified Second Renaissance Revival-style bank.
20. The Reliable Store (formerly Exchange National Bank), 204 East High Street, ca. 1880's. This commercial structure has two stories.
21. J.C. Penney Co. (formerly R. Dallmeyer Dry Goods Company), 206 East High Street, ca. 1880's. This commercial building has cast-iron lintel trim; an ornate cornice has been removed.

UNITED STATES DEPARTMENT OF THE INTERIOR
NATIONAL PARK SERVICE

**NATIONAL REGISTER OF HISTORIC PLACES
INVENTORY -- NOMINATION FORM**

FOR NPS USE ONLY

RECEIVED

DATE ENTERED

MISSOURI STATE CAPITOL HISTORIC DISTRICT

CONTINUATION SHEET

ITEM NUMBER 7 PAGE 2

22. The Bermuda Shop (formerly Guyot Jewelry Store), 218 East High Street, 1870. A partial restoration of this two-story, three-bay, commercial building has been completed.
23. Jack and Jill Shop (formerly Cole County Democrat Building), 300 East High Street, ca. 1870's. Victorian Gothic in style, a good degree of original design survives.
24. Keyes & Hearne (formerly Burch-Berendzen Grocer Company), 304 East High Street, ca. 1895. This Romanesque Revival-style building is across from the county courthouse and was possibly designed by the same architect, Frank B. Miller. Much of the original integrity survives.
25. Monroe Building (formerly Monroe House [a hotel and saloon]), 231-233-235 East High Street, ca. 1870's. Situated on a corner lot, this Victorian Italianate-style commercial structure has as trim cast-iron lintels and metal cornices. It has a three-story section joined by a two-story ell portion. The brick exterior is partially preserved. Thomas Jefferson Men's Wear (#231), Fabricland (#233), and Bartlett's (#235) occupy the first-floor shops.
26. Key Loan Company, 225 East High Street, ca. 1900. This commercial structure has decorative brickwork on the second story; the first story is altered.
27. Dallmeyer's Jewelry, Inc., 223 East High Street, ca. 1900. The first story of this three-story, three-bay, commercial building is altered.
28. American Shoe Store, 221 East High Street, ca. 1900. Brick stringcourse and lintels trim this three-story, four-bay, commercial building. The cornice has been removed; the first story is altered.
29. Missouri State Optical and neighboring row building, 201-203 East High Street, ca. 1840's. An example of early commercial construction, the building has a ridge roof, joined chimneys on the gable ends, and simple trim. The street-level story is badly eroded, but the upper story and attic have much exterior original integrity. Mavrakos Candy Shop is located in the building with an entrance at 231 Madison Street.
30. Towne Grill, 221 Madison Street, ca. 1890. A metal front faces this two-story commercial structure. Although the top of the cornice has been removed, the facade has a good degree of original integrity intact.
31. Central Trust Building, 238 Madison Street, 1917. This seven-story, commercial-style building was designed by Frank B. Miller, architect for Sites #5, #6, and #45.
32. Coach Light Flowers and Gifts, 129 East High Street, ca. 1850. This three-story, four-bay building is an example of the early commercial architecture found in the district. A ridge roof covers the structure.
33. Fischer Drug Store, 105 East High Street, ca. 1860. Brick moldings and ornate, cast-iron lintels ornament this three-story, four-bay, commercial building.

UNITED STATES DEPARTMENT OF THE INTERIOR
NATIONAL PARK SERVICE

NATIONAL REGISTER OF HISTORIC PLACES
INVENTORY -- NOMINATION FORM

FOR NPS USE ONLY

RECEIVED

DATE ENTERED

MISSOURI STATE CAPITOL HISTORIC DISTRICT

CONTINUATION SHEET

ITEM NUMBER 7 PAGE 3

34. Jefferson Building, 100 East Capitol Street, 1952. A standard, modern, high-rise office building of the 1950's, it houses many state offices.
35. Residential Building, 100 block of Jefferson Street, ca. 1850's. A two-story with attic structure dating from the initial commercial development of Jefferson City, the building's architecture is compatible with the Jefferson Landing (Lohman's Landing) and Captain Maus buildings nearer the river.
36. Captain Maus Building (formerly Jefferson Hotel), south corner of Jefferson and East State streets, ca. 1850. This building is a major feature of the historic district; it relates to the early commercial history of Jefferson City and is homogeneous in architectural design with the Jefferson Landing (Lohman's Landing) Building across the street (Site #4). It has been a hotel, boat store, produce store, and headquarters for Captain Maus (a steamboat agent).
37. Row Building, 109-111-113 Madison Street, 1871. This row of residential structures includes the B. Gratz Brown House (#109) which is already listed on the National Register. Now restored, this row includes a historic house museum and historical society library (#109) and offices (#111 and #113.)
38. Row Building, 115-117 Madison Street, ca. 1850's. Adjacent to Site #37, this house continues the line of row buildings along this block of Madison Street. Together these two row buildings comprise one of the more intact areas of the historic district and complement the neighborhood of the Governor's Mansion (Site #2) which is directly across the street.
39. Rowhouse, 221 East Capitol Street, ca. 1870. This early, two-story brick rowhouse is presently divided into apartments.
40. Capital Radar Security, 225-227 East Capitol Street, ca. 1870. A ridge roof covers this two-story, early-type, brick row building.
41. and 42. Missouri-Pacific Railroad Depot (now Amtrak Depot), 301 East State Street, 1898. The Romanesque Revival-style depot is of brick construction with stone trim; the complex includes a freight depot as well as other buildings.
43. First Baptist Church, 301 East Capitol Street, 1924-1937. This Italian Villa-style church is maintained in good condition.
44. First United Methodist Church (formerly Methodist Episcopal Church South), 201 Monroe Street, 1900. Charles Opel of Jefferson City was the architect. It is a local example of Romanesque Revival church architecture constructed with limestone quarried in Cole County. The building is in good condition.
45. Carnegie Public Library, 210 Adams Street, 1901. A good example of turn-of-the-century architecture, this stone structure was designed by Frank B. Miller. Threatened with demolition to make way for a parking lot, it is one of the few surviving Carnegie library buildings in Missouri.

UNITED STATES DEPARTMENT OF THE INTERIOR
NATIONAL PARK SERVICE

NATIONAL REGISTER OF HISTORIC PLACES
INVENTORY -- NOMINATION FORM

FOR NPS USE ONLY

RECEIVED

DATE ENTERED

MISSOURI STATE CAPITOL HISTORIC DISTRICT

CONTINUATION SHEET

ITEM NUMBER 7 PAGE 4

46. Grace Episcopal Church, 217 Adams Street, 1898. The architectural style of this brick structure combines features of the Gothic and Romanesque revivals. It is in good condition.
47. Commercial Store, 307-309 East McCarty Street, ca. 1880. This brick, two-story, five-bay, commercial building with a one bay wide addition to the northwest is located across the street from the Jefferson City Police Department (Site #48).
48. Jefferson City Police Department (formerly Cole County Jail and Sheriff's Office), 401 Monroe Street, ca. 1841-1842. This vernacular, classically derived-style structure has 36" thick stone walls. It is in good condition.
49. Temple Beth El, 318 Monroe Street, 1883. This Gothic Revival-style brick structure is in good condition. Built as a place of worship by the Beth El congregation, the temple has been in continuous use for its original purpose. Beth El is the oldest congregation still functioning in its original site west of the Mississippi River.
50. Tyler's Key Shop, 333 Madison Street, ca. 1860's. This example of early commercial architecture has living quarters on the second floor.
51. First United Presbyterian Church, 324 Madison Street. A portico dominates the main facade of this modified Classic Revival-style building.
52. Schmidt Apartments, 318 Jefferson Street. This Spanish Colonial Revival-style apartment building is maintained in good condition.

CONDITION

In general, the structures are in good condition. There is a high rate of occupancy.

INTRUSIONS

Major intrusions into the district are inappropriate remodelings of the street-level stories of the commercial buildings; few of the structures have survived without these alterations. Some are beyond recall; others could be brought back to a more appropriate over-all facade design with planning involving architectural/historical research. Old views of many of these buildings showing original cornices and street-level treatments are available.

PRESENT STATUS

Jefferson City is currently undergoing an urban renewal program (Department of Housing and Urban Development) which could affect the historic district area.

Several commercial buildings have recently been refurbished in a sympathetic and attractive manner giving hope that other property owners in the district may follow this course of action.

UNITED STATES DEPARTMENT OF THE INTERIOR
NATIONAL PARK SERVICE

**NATIONAL REGISTER OF HISTORIC PLACES
INVENTORY -- NOMINATION FORM**

FOR NPS USE ONLY

RECEIVED

DATE ENTERED

MISSOURI STATE CAPITOL HISTORIC DISTRICT

CONTINUATION SHEET

ITEM NUMBER 7 PAGE 5

SOURCES OF INFORMATION

1. Cole County Historical Society Files, 109 Madison Street, Jefferson City, Missouri.
2. J.W. Johnston (ed.), The Illustrated Sketch Book and Directory of Jefferson City and Cole County (Jefferson City, Missouri: Missouri Illustrated Sketch Book Co., 1900).
3. M. Patricia Holmes, field visits, July, 1974.
4. Mrs. Nicholas Monaco, research, August - September, 1974. (Mrs. Monaco is a member of the Cole County Historical Society.)

SIGNIFICANCE

PERIOD		AREAS OF SIGNIFICANCE -- CHECK AND JUSTIFY BELOW			
<input type="checkbox"/> PREHISTORIC	<input type="checkbox"/> ARCHEOLOGY-PREHISTORIC	<input checked="" type="checkbox"/> COMMUNITY PLANNING	<input type="checkbox"/> LANDSCAPE ARCHITECTURE	<input checked="" type="checkbox"/> RELIGION	
<input type="checkbox"/> 1400-1499	<input type="checkbox"/> ARCHEOLOGY-HISTORIC	<input type="checkbox"/> CONSERVATION	<input checked="" type="checkbox"/> LAW	<input type="checkbox"/> SCIENCE	
<input type="checkbox"/> 1500-1599	<input type="checkbox"/> AGRICULTURE	<input checked="" type="checkbox"/> ECONOMICS	<input type="checkbox"/> LITERATURE	<input checked="" type="checkbox"/> SCULPTURE	
<input type="checkbox"/> 1600-1699	<input checked="" type="checkbox"/> ARCHITECTURE	<input checked="" type="checkbox"/> EDUCATION	<input type="checkbox"/> MILITARY	<input checked="" type="checkbox"/> SOCIAL/HUMANITARIAN	
<input type="checkbox"/> 1700-1799	<input checked="" type="checkbox"/> ART	<input type="checkbox"/> ENGINEERING	<input type="checkbox"/> MUSIC	<input checked="" type="checkbox"/> THEATER	
<input checked="" type="checkbox"/> 1800-1899	<input checked="" type="checkbox"/> COMMERCE	<input type="checkbox"/> EXPLORATION/SETTLEMENT	<input type="checkbox"/> PHILOSOPHY	<input checked="" type="checkbox"/> TRANSPORTATION	
<input checked="" type="checkbox"/> 1900-	<input type="checkbox"/> COMMUNICATIONS	<input type="checkbox"/> INDUSTRY	<input checked="" type="checkbox"/> POLITICS/GOVERNMENT	<input type="checkbox"/> OTHER (SPECIFY)	
		<input type="checkbox"/> INVENTION			

SPECIFIC DATES 1850-1950 BUILDER/ARCHITECT

STATEMENT OF SIGNIFICANCE

The Missouri State Capitol Historic District is significant as the central area of Jefferson City, Missouri, encompassing the seat of state government from December, 1821,¹ when the site was officially selected, until the present. The first legislative session was held at the newly established capitol city on November 3, 1826.²

The site of Jefferson City was selected because of its central location in the state and its accessibility to other areas as provided by the primary artery of transportation, the Missouri River. The promontories along the river upon which the town was built afforded safety from recurrent flooding which by 1821 had threatened the existence of other towns that were seriously considered for the permanent seat of state government.³

Buildings included within the historic district do not represent architectural homogeneity, but rather reflect the series of building stages experienced in the capitol city. The district includes some of the area's earliest buildings, such as the Jefferson Landing (Lohman's Landing) Buildings, and so on through the successive decades to the modern office buildings of state government.

Restoration activity is currently centered in several areas:

1. The Missouri State Capitol Building is undergoing extensive exterior work on its west front where the original architectural cement porches, stairs, and balustrades have weathered badly and are being replaced in Indiana limestone.
2. Plans are underway for the restoration and adaptive use of the Jefferson Landing Buildings as Missouri's state-wide project for the Bicentennial celebration. Funding for this project has been secured from the Missouri General Assembly (\$600,000) through Revenue Sharing and from the Missouri American Revolution Bicentennial Commission (\$10,000). A July 4, 1976 dedication of the restored buildings is planned.

Since the area is architecturally diverse, Jefferson City could benefit from a comprehensive architectural plan which would establish a direction for further development of the area and curb the past and present tendency toward independent planning judgments on the part of both public and private owners. New buildings added to the area and older ones which are restored or rehabilitated should be handled in such a way as to increase the over-all visual homogeneity of the area.

The Missouri State Capitol Building is richly ornamented with mural paintings by prominent Missouri artists and with sculptures. The grounds also feature numerous sculptures.

UNITED STATES DEPARTMENT OF THE INTERIOR
NATIONAL PARK SERVICE

**NATIONAL REGISTER OF HISTORIC PLACES
INVENTORY -- NOMINATION FORM**

FOR NPS USE ONLY

RECEIVED

DATE ENTERED

MISSOURI STATE CAPITOL HISTORIC DISTRICT

CONTINUATION SHEET

ITEM NUMBER 8 PAGE 1

These items are fully documented and described in a report prepared by the Capitol Decoration Commission (1917-1928).⁴ Some of the major works include a frieze over the main (southwest) entrance representing Missouri History by Alexander Calder and a high relief of the Signing of the Louisiana Purchase Treaty by Karl Bitter located on the terrace overlooking the Missouri River, northeast of the Capitol Building.

Due to the district's proximity to the Missouri River, commerce and transportation have played a large role in the community's growth and development: first through the river traffic, from flat boats to steam boats, and later by river barges and by the railroad which established a right-of-way along the river bank.

As the heart of the city's business district now and throughout its history, the historic district serves as the commercial and banking center of Jefferson City.

Nineteenth-century theater is represented in the district by several opera houses located above the stores on High Street. The most notable is the Lohman's Opera House; this example can be added to the list of known survivors of early theatrical buildings in Missouri.

The survey of Missouri's historic sites is based on the selection of sites as they relate to theme studies outlined in "Missouri's State Historic Preservation Plan." Accordingly, the Missouri State Capitol Historic District is being nominated to the National Register of Historic Places as an example of the themes of "Architecture," "Economics," "Education," "Fine Arts and Humanities," "Political Affairs," "Urban Design," and "Technology."

FOOTNOTES

1. Jonas Viles, "Missouri Capitals and Capitols," Missouri Historical Review, Vol. 13 No. 3 (October, 1918), p. 232.
2. James E. Ford, A History of Jefferson City and Cole County (Jefferson City, Missouri: The New Day Press, 1938), p. 13.
3. Ibid., pp. 6-8.
4. John Pickerd, Report of the Capitol Decoration Commission, 1917-1928.

9 MAJOR BIBLIOGRAPHICAL REFERENCES

1. Cole County Historical Society Files, 109 Madison Street, Jefferson City, Missouri.
2. Ford, James E. A History of Jefferson City and Cole County. Jefferson City, Missouri: The New Day Press, 1938.

10 GEOGRAPHICAL DATA

ACREAGE OF NOMINATED PROPERTY approx. 115 acres

UTM REFERENCES

A	1,5	5,7,2,0,1,0	4,2,7,0,5,3,0	B	1,5	5,7,2,7,8,0	4,2,6,9,9,4,0
	ZONE	EASTING	NORTHING		ZONE	EASTING	NORTHING
C	1,5	5,7,2,3,6,0	4,2,6,9,4,8,0	D	1,5	5,7,1,6,4,0	4,2,7,0,1,0,0
	ZONE	EASTING	NORTHING		ZONE	EASTING	NORTHING

VERBAL BOUNDARY DESCRIPTION

The northeast boundary is the southwest bank of the Missouri River beginning at Point A (300' north of the mouth of Wears Creek) and continuing southeastward to Point B where Adams Street extended would intersect the river. Beginning at Point B, the southeast boundary extends southwestward along the northwest curb of Adams Street and terminates at Point C (the north corner of Adams and East McCarty streets) with the exception of a jog in the boundary to cross Adams Street to include Site #46 on the east corner of Adams and

LIST ALL STATES AND COUNTIES FOR PROPERTIES OVERLAPPING STATE OR COUNTY BOUNDARIES

STATE	CODE	COUNTY	CODE
STATE	CODE	COUNTY	CODE

11 FORM PREPARED BY

NAME / TITLE

1. M. Patricia Holmes, Research Associate

ORGANIZATION

Department of Natural Resources, State
Historical Survey and Planning Office

DATE

September 25, 1975

STREET & NUMBER

P.O. Box 176

TELEPHONE

314-751-4096

CITY OR TOWN

Jefferson City

STATE

Missouri 65101

12 STATE HISTORIC PRESERVATION OFFICER CERTIFICATION

THE EVALUATED SIGNIFICANCE OF THIS PROPERTY WITHIN THE STATE IS:

NATIONAL ☐

STATE ☒

LOCAL ☐

As the designated State Historic Preservation Officer for the National Historic Preservation Act of 1966 (Public Law 89-665), I hereby nominate this property for inclusion in the National Register and certify that it has been evaluated according to the criteria and procedures set forth by the National Park Service.

STATE HISTORIC PRESERVATION OFFICER SIGNATURE

TITLE

Director, Department of Natural Resources,
and State Historic Preservation Officer

DATE

FOR NPS USE ONLY

I HEREBY CERTIFY THAT THIS PROPERTY IS INCLUDED IN THE NATIONAL REGISTER

DATE

DIRECTOR, OFFICE OF ARCHEOLOGY AND HISTORIC PRESERVATION

ATTEST:

DATE

KEEPER OF THE NATIONAL REGISTER

UNITED STATES DEPARTMENT OF THE INTERIOR
NATIONAL PARK SERVICE

**NATIONAL REGISTER OF HISTORIC PLACES
INVENTORY -- NOMINATION FORM**

FOR NPS USE ONLY

RECEIVED

DATE ENTERED

MISSOURI STATE CAPITOL HISTORIC DISTRICT

CONTINUATION SHEET

ITEM NUMBER 9 PAGE 1

3. Holmes, M. Patricia. Field visits. July, 1974.
4. Johnston, J.W. (ed.). The Illustrated Sketch Book and Directory of Jefferson City and Cole County. Jefferson City, Missouri: Missouri Illustrated Sketch Book Co., 1900.
5. Monaco, Mrs. Nicholas. Research. August - September, 1974.
6. Pickerd, John. Report of the Capitol Decoration Commission. 1917-1928.
7. Viles, Jonas. "Missouri Capitals and Capitols," Missouri Historical Review, Vol. 13, No. 3 (October, 1918).
8. "A Walking Tour of Jefferson City Landmarks." Jefferson City, Missouri: Cole County Historical Society, n.d.

UNITED STATES DEPARTMENT OF THE INTERIOR
NATIONAL PARK SERVICE

**NATIONAL REGISTER OF HISTORIC PLACES
INVENTORY -- NOMINATION FORM**

FOR NPS USE ONLY

RECEIVED

DATE ENTERED

MISSOURI STATE CAPITOL HISTORIC DISTRICT

CONTINUATION SHEET

ITEM NUMBER 10 PAGE 1

East High streets. The southwest boundary begins at Point C and runs northwestward along the northeast curb of McCarty Street to Point D, 50' southeast of the east corner of Mulberry and West McCarty streets; a jog in the boundary to cross East McCarty Street allows for the inclusion of Site #48, located on the south corner of Monroe and East McCarty streets. A line running from Point D and extending northeastward to Point A or the river forms the northwest boundary.

UNITED STATES DEPARTMENT OF THE INTERIOR
NATIONAL PARK SERVICE

**NATIONAL REGISTER OF HISTORIC PLACES
INVENTORY -- NOMINATION FORM**

FOR NPS USE ONLY

RECEIVED

DATE ENTERED

MISSOURI STATE CAPITOL HISTORIC DISTRICT

CONTINUATION SHEET

ITEM NUMBER 11 PAGE 1

2. Nancy B. Breme, Research Associate
Department of Natural Resources, State Historical
Survey and Planning Office
P.O. Box 176
Jefferson City, Missouri 65101

Telephone: 314-751-409

3. Nancy W. Edelman, Research Associate
Department of Natural Resources, State Historical
Survey and Planning Office
P.O. Box 176
Jefferson City, Missouri 65101

Telephone: -----

197 361-002 NR Correspondence
file

RECEIVED

NOV 25

HISTORIC PRESERVATION
PROGRAM

NOV 17 1981

F78 (RMR)CR

Property: Hotel Governor Owner: Barberich's Delivery Co. Inc.

Address: 200 Madison Jefferson City, Missouri 65101 Address: 1531 E. 14th Street St. Louis, Missouri 63106

Project No.: ~~0182-82-MO~~ MO-82-00113

Dear Mr. Barberich:

The National Park Service has determined that the property listed above contributes to the historic significance of the Missouri State Capitol Historic District.

If subject to depreciation under section 167 the Internal Revenue Code of 1954, this property qualifies as a "certified historic structure" for purposes of the Tax Reform Act of 1976.

Obtaining "certified historic structure" status is the first step in qualifying for tax deductions under section 2124 of the Tax Reform Act. The incentives detailed in section 2124 apply only to structures which have either undergone or are about to undergo rehabilitation which can be certified in accordance with the Secretary of the Interior's "Standards for Rehabilitation".

If you have not yet completed Part 2 of the Historic Preservation Certification Application, describing your rehabilitation plans, the enclosed copy should be completed and mailed to your State Historic Preservation Officer for preliminary review prior to final review at the Federal level. Instructions for filling out the application are on the form itself. Enclosed are the Secretary's "Standards for Rehabilitation". Specific questions concerning documentation required to certify rehabilitation work should be addressed to your State Historic Preservation Officer or to the Cultural Resources Programs, National Park Service Rocky Mountain Regional Office, 655 Parfet Street, P.O. Box 25287, Denver, Colorado 80225, Attention de Tael Patterson Tiller.

Sincerely yours,

ACTING

John de Tael Patterson Tiller
Katherine H. Cole
Chief, Division of Cultural
Resources Programs

cc: MO SHPO

GKendrick:jb 11/17/81

UNITED STATES DEPARTMENT OF THE INTERIOR
NATIONAL PARK SERVICE

NATIONAL REGISTER OF HISTORIC PLACES PROPERTY MAP FORM

FOR NPS USE ONLY
RECEIVED
DATE ENTERED

SEE INSTRUCTIONS IN HOW TO COMPLETE NATIONAL REGISTER FORMS
TYPE ALL ENTRIES -- ENCLOSE WITH MAP

1 NAME

HISTORIC

Missouri State Capitol Historic District

AND/OR COMMON

Missouri State Capitol Historic District

2 LOCATION

CITY, TOWN

Jefferson City

VICINITY OF

COUNTY

Cole

STATE

Missouri

3 MAP REFERENCE

SOURCE

U.S.G.S. 7.5' Jefferson City Quadrangle

SCALE

1:24,000

DATE

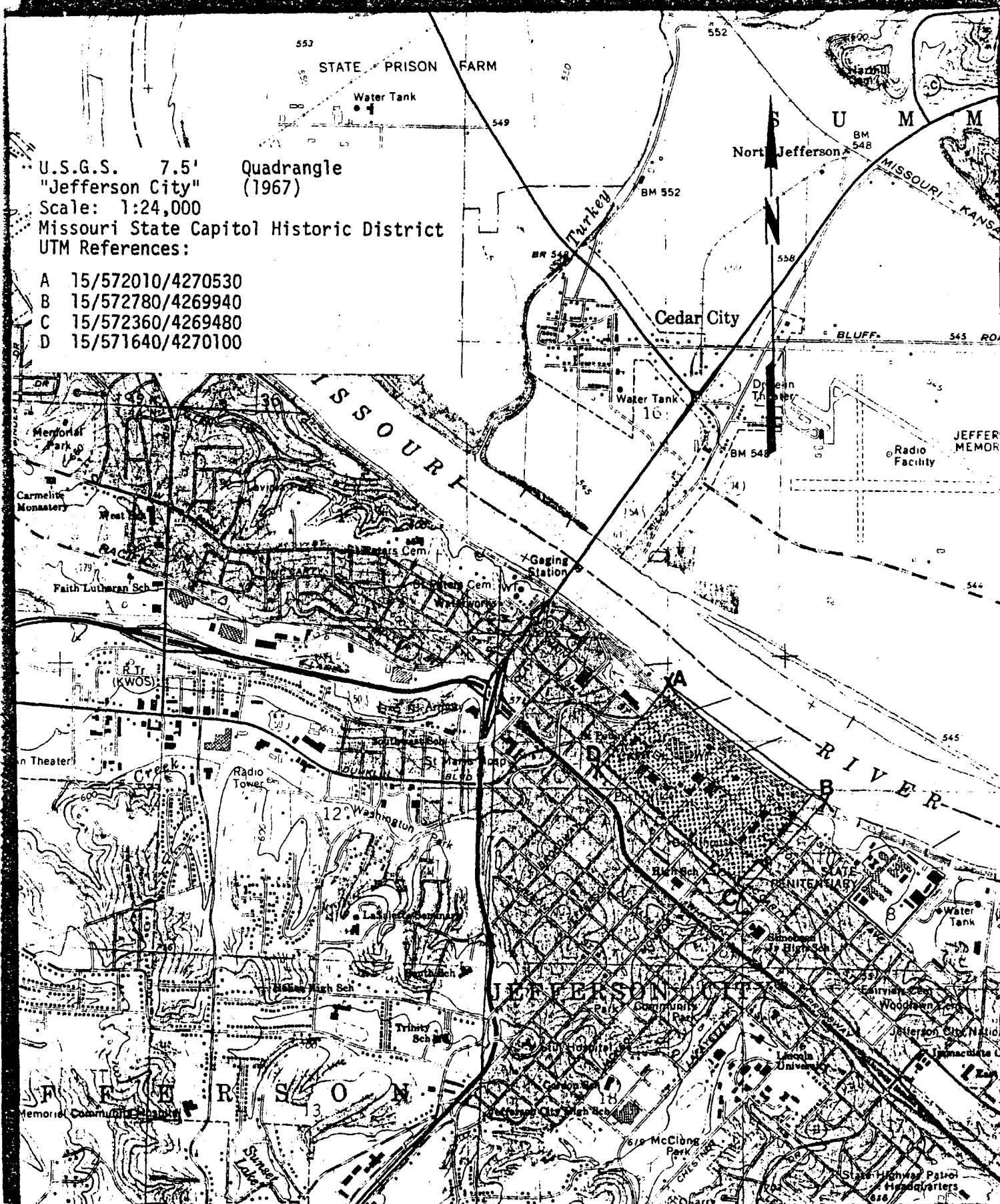
1967

4 REQUIREMENTS

TO BE INCLUDED ON ALL MAPS

1. PROPERTY BOUNDARIES
2. NORTH ARROW
3. UTM REFERENCES

A 15/572010/4270530
B 15/572780/4269940
C 15/572360/4269480
D 15/571640/4270100



UNITED STATES DEPARTMENT OF THE INTERIOR
NATIONAL PARK SERVICE

NATIONAL REGISTER OF HISTORIC PLACES PROPERTY MAP FORM

FOR NPS USE ONLY
RECEIVED
DATE ENTERED

SEE INSTRUCTIONS IN HOW TO COMPLETE NATIONAL REGISTER FORMS
TYPE ALL ENTRIES -- ENCLOSE WITH MAP

1 NAME

HISTORIC

Missouri State Capitol Historic District

AND/OR COMMON

Missouri State Capitol Historic District

2 LOCATION

CITY, TOWN

Jefferson City

VICINITY OF

COUNTY

Cole

STATE

Missouri

3 MAP REFERENCE

SOURCE

The Comprehensive Plan (Plate 8)

SCALE

7/8" = 300'

DATE

1975

4 REQUIREMENTS

TO BE INCLUDED ON ALL MAPS

1. PROPERTY BOUNDARIES
2. NORTH ARROW
3. UTM REFERENCES

SITE PLAN MAP - area being nominated to the
National Register of Historic Places indicated.

UNITED STATES DEPARTMENT OF THE INTERIOR
NATIONAL PARK SERVICE

NATIONAL REGISTER OF HISTORIC PLACES PROPERTY MAP FORM

FOR NPS USE ONLY
RECEIVED
DATE ENTERED

SEE INSTRUCTIONS IN HOW TO COMPLETE NATIONAL REGISTER FORMS
TYPE ALL ENTRIES -- ENCLOSE WITH MAP

1 NAME

HISTORIC

Missouri State Capitol Historic District

AND/OR COMMON

Missouri State Capitol Historic District

2 LOCATION

CITY, TOWN

Jefferson City — VICINITY OF

COUNTY

Cole

STATE

Missouri

3 MAP REFERENCE

SOURCE

U.S.G.S. 7.5' Jefferson City Quadrangle

SCALE

1:24,000

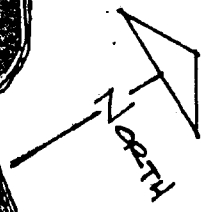
DATE

1967

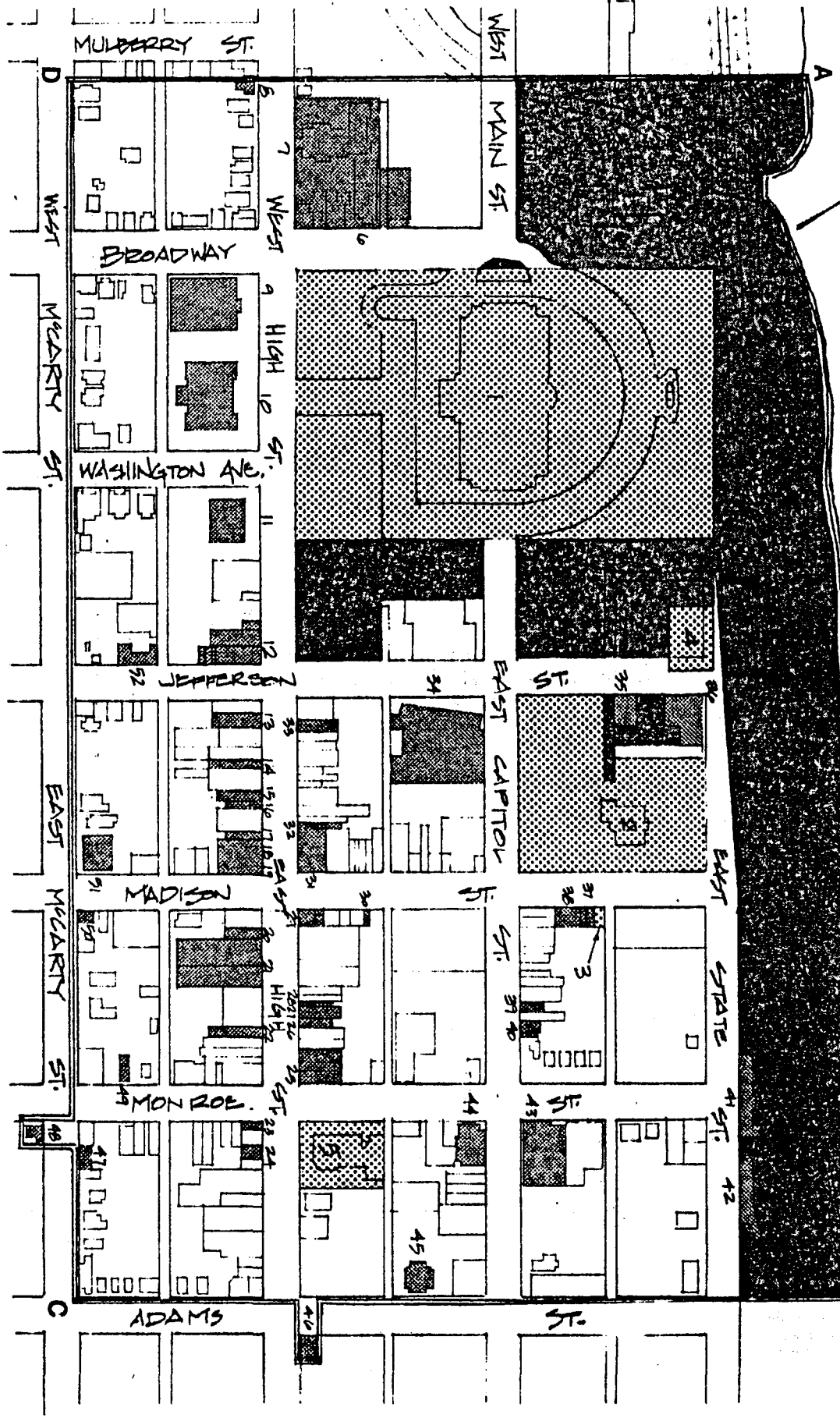
4 REQUIREMENTS

TO BE INCLUDED ON ALL MAPS

1. PROPERTY BOUNDARIES
2. NORTH ARROW
3. UTM REFERENCES



MISSOURI RIVER

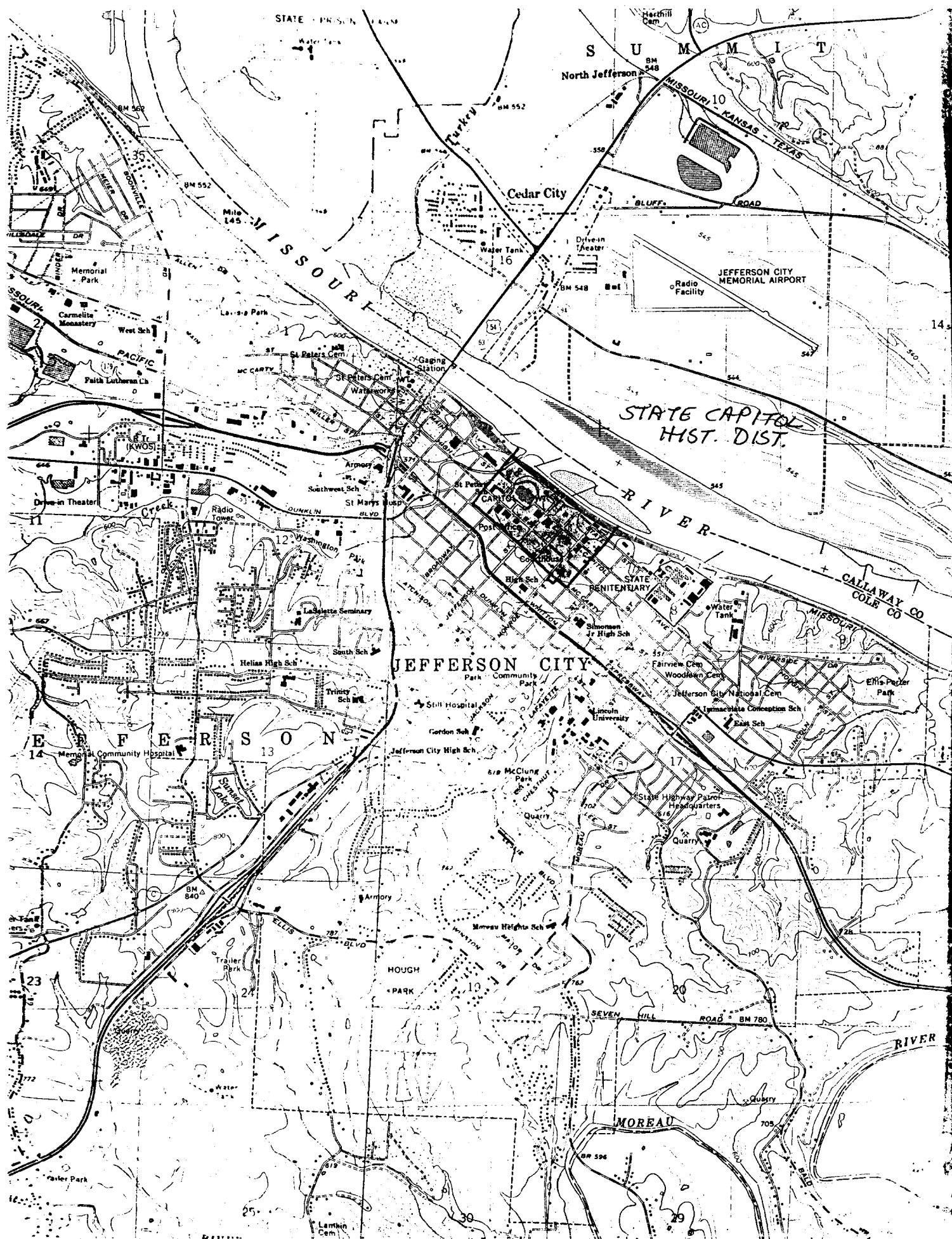


- Significant Areas to be Included in Nomination
- Existing NHP Sites
- Non-Architectural Areas to be Included in Nomination

MISSOURI STATE CAPITOL HISTORIC DISTRICT
JEFFERSON CITY, MISSOURI

PERMANENT DISTRICT BOUNDARY

SCALE
0 100 200 FEET



Missouri State Capitol Historic District
Jefferson City, Missouri 1975

UNITED STATES DEPARTMENT OF THE INTERIOR
NATIONAL PARK SERVICE

NATIONAL REGISTER OF HISTORIC PLACES
PROPERTY PHOTOGRAPH FORM

FOR NPS USE ONLY

RECEIVED

DATE ENTERED

SEE INSTRUCTIONS IN HOW TO COMPLETE NATIONAL REGISTER FORMS
TYPE ALL ENTRIES ENCLOSE WITH PHOTOGRAPH

1 NAME

HISTORIC

Missouri State Capitol Historic District

AND/OR COMMON

Missouri State Capitol Historic District

2 LOCATION

CITY, TOWN

Jefferson City

VICINITY OF

COUNTY

Cole

STATE

Missouri

3 PHOTO REFERENCE

PHOTO CREDIT

M. Patricia Holmes

DATE OF PHOTO July 23, 1974

NEGATIVE FILED AT

Department of Natural Resources, State Historical Survey and
Planning Office, P.O. Box 176, Jefferson City, Missouri 65101

4 IDENTIFICATION

DESCRIBE VIEW, DIRECTION, ETC IF DISTRICT. GIVE BUILDING NAME & STREET

Broadway State Office Building (Site #9), northeast facade; view
looking southwest. This building, facing the Capitol Building, is the
only example of "Moderne"-style architecture in the district.

PHOTO NO 4



Form No. 10-301a
(Rev 10-7)

UNITED STATES DEPARTMENT OF THE INTERIOR
NATIONAL PARK SERVICE

NATIONAL REGISTER OF HISTORIC PLACES PROPERTY PHOTOGRAPH FORM

FOR NPS USE ONLY	
RECEIVED	DATE ENTERED

SEE INSTRUCTIONS IN HOW TO COMPLETE NATIONAL REGISTER FORMS
TYPE ALL ENTRIES ENCLOSE WITH PHOTOGRAPH

1 NAME

HISTORIC

Missouri State Capitol Historic District

AND/OR COMMON

Missouri State Capitol Historic District

2 LOCATION

CITY, TOWN

Jefferson City

— VICINITY OF

COUNTY

Cole

STATE Missouri

3 PHOTO REFERENCE

PHOTO CREDIT

M. Patricia Holmes

NEGATIVE FILED AT

Department of Natural Resources, State Historical Survey and Planning Office, P.O. Box 176, Jefferson City, Missouri 65101

DATE OF PHOTO July 23, 1974

4 IDENTIFICATION

DESCRIBE VIEW, DIRECTION, ETC. IF DISTRICT. GIVE BUILDING NAME & STREET

United States Post Office and Courthouse, 131-133 West High Street (Site #11), northeast facade; view looking southwest. Facing the Capitol Building, it maintains the same architectural feeling in its Neo-Classic design. The Supreme Court of Missouri (Site #10) is to the extreme right.

PHOTO NO. 5



UNITED STATES DEPARTMENT OF THE INTERIOR
NATIONAL PARK SERVICE

NATIONAL REGISTER OF HISTORIC PLACES PROPERTY PHOTOGRAPH FORM

FOR NPS USE ONLY

RECEIVED

DATE ENTERED

SEE INSTRUCTIONS IN HOW TO COMPLETE NATIONAL REGISTER FORMS
TYPE ALL ENTRIES ENCLOSE WITH PHOTOGRAPH

1 NAME

HISTORIC

Missouri State Capitol Historic District

AND/OR COMMON

Missouri State Capitol Historic District

2 LOCATION

CITY, TOWN

Jefferson City

—VICINITY OF

COUNTY

Cole

STATE

Missouri

3 PHOTO REFERENCE

PHOTO CREDIT

M. Patricia Holmes

DATE OF PHOTO July 30, 1974

NEGATIVE FILED AT

Department of Natural Resources, State Historical Survey and
Planning Office, P.O. Box 176, Jefferson City, Missouri 65101

4 IDENTIFICATION

DESCRIBE VIEW, DIRECTION, ETC. IF DISTRICT. GIVE BUILDING NAME & STREET

Lohman's Opera House, 102-104 East High Street (Site #13), northeast
facade; view looking southwest. The opera house occupies the second
and third stories of this Victorian commercial building.

PHOTO NO. 7



UNITED STATES DEPARTMENT OF THE INTERIOR
NATIONAL PARK SERVICE

**NATIONAL REGISTER OF HISTORIC PLACES
PROPERTY PHOTOGRAPH FORM**

FOR NPS USE ONLY

RECEIVED

DATE ENTERED

SEE INSTRUCTIONS IN *HOW TO COMPLETE NATIONAL REGISTER FORMS*
TYPE ALL ENTRIES ENCLOSE WITH PHOTOGRAPH

1 NAME

HISTORIC

Missouri State Capitol Historic District

AND/OR COMMON

Missouri State Capitol Historic District

2 LOCATION

CITY, TOWN

Jefferson City

____ VICINITY OF

COUNTY

Cole

STATE

Missouri

3 PHOTO REFERENCE

PHOTO CREDIT

M. Patricia Holmes

DATE OF PHOTO July 23, 1974

NEGATIVE FILED AT

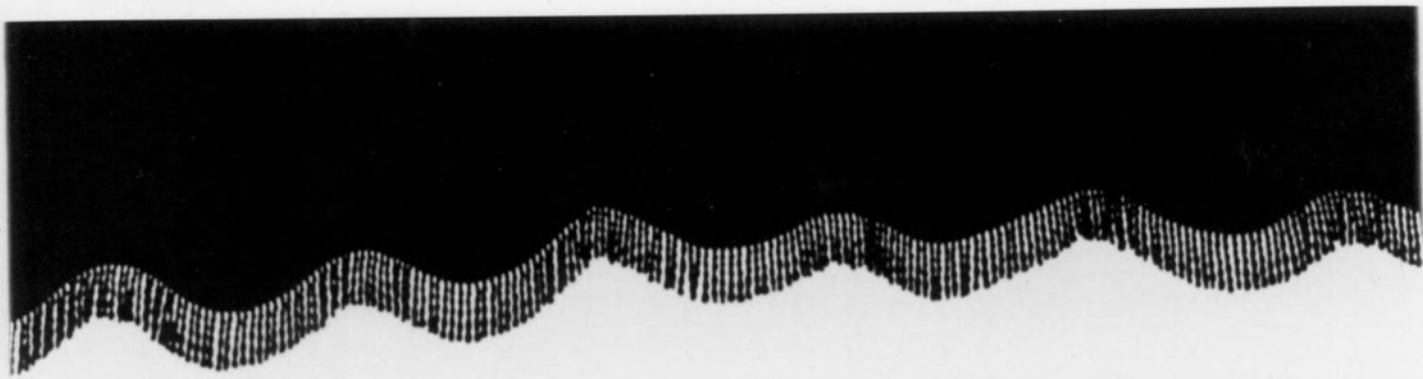
Department of Natural Resources, State Historical Survey and
Planning Office, P.O. Box 176, Jefferson City, Missouri 65101

4 IDENTIFICATION

DESCRIBE VIEW, DIRECTION, ETC. IF DISTRICT, GIVE BUILDING NAME & STREET

PHOTO NO. 8

Tweedie's and C. Gordon Price, 122 and 120 East High Street (Sites #16 and #15), northeast facades of adjoining buildings; view looking southwest with C. Gordon Price on the right of Tweedie's (center). Both buildings illustrate the ornamental metal work preserved in the upper stories of many High Street shops.



Form No. 10-301a
(Rev 10-74)

UNITED STATES DEPARTMENT OF THE INTERIOR
NATIONAL PARK SERVICE

NATIONAL REGISTER OF HISTORIC PLACES PROPERTY PHOTOGRAPH FORM

FOR NPS USE ONLY

RECEIVED

DATE ENTERED

SEE INSTRUCTIONS IN HOW TO COMPLETE NATIONAL REGISTER FORMS
TYPE ALL ENTRIES ENCLOSE WITH PHOTOGRAPH

1 NAME

HISTORIC

Missouri State Capitol Historic District

AND/OR COMMON

Missouri State Capitol Historic District

2 LOCATION

CITY, TOWN

Jefferson City

VICINITY OF

COUNTY

Cole

STATE

Missouri

3 PHOTO REFERENCE

PHOTO CREDIT

M. Patricia Holmes

DATE OF PHOTO July 30, 1974

NEGATIVE FILED AT

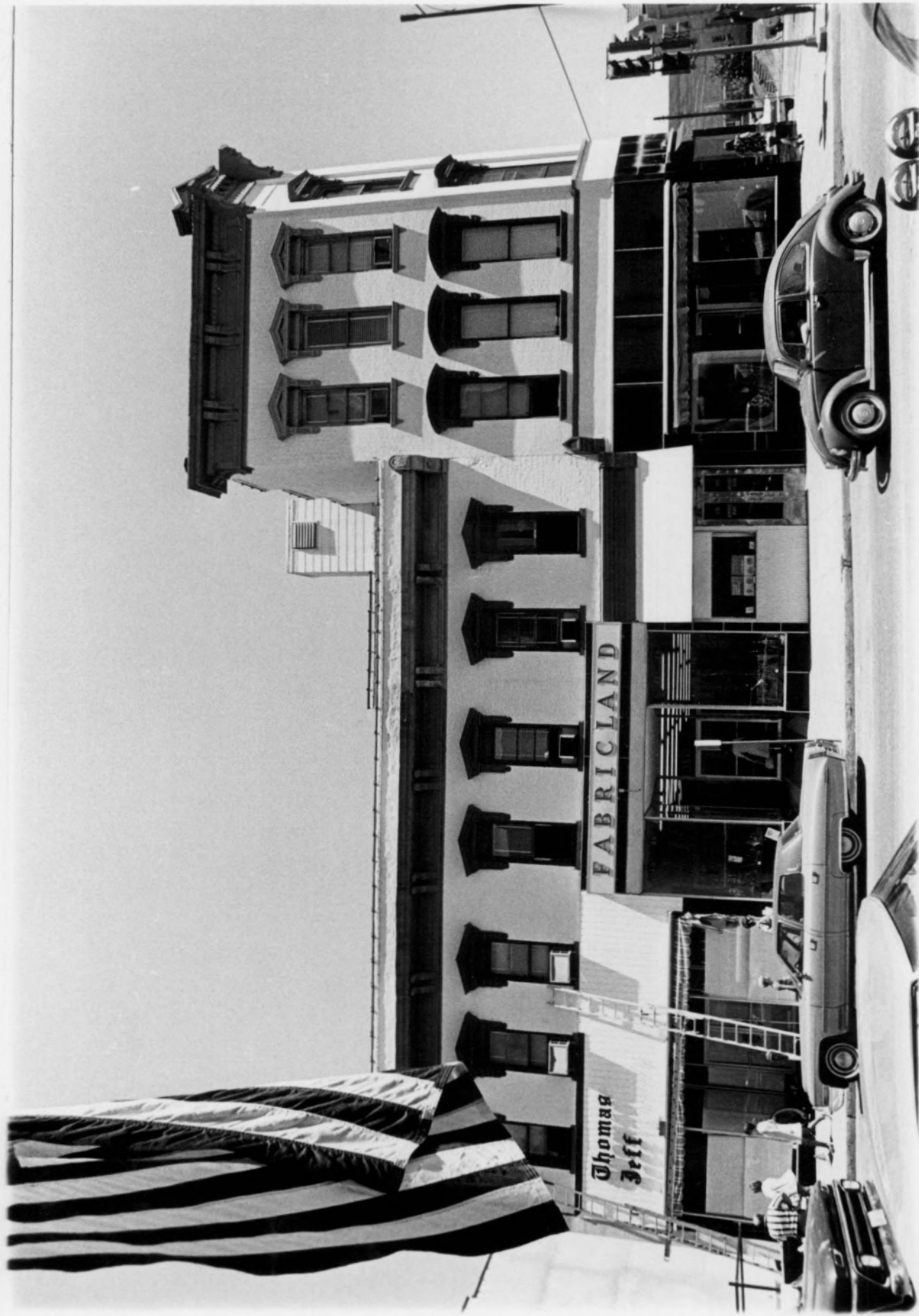
Department of Natural Resources, State Historical Survey and Planning Office, P.O. Box 176, Jefferson City, Missouri 65101

4 IDENTIFICATION

DESCRIBE VIEW, DIRECTION, ETC. IF DISTRICT, GIVE BUILDING NAME & STREET

Monroe Building, 231-233-235 East High Street (Site #25), southwest facade; view looking northeast. The cast-iron lintels and elaborate metal cornices are typical of similar treatments found on other district buildings.

PHOTO NO 9



UNITED STATES DEPARTMENT OF THE INTERIOR
NATIONAL PARK SERVICE

NATIONAL REGISTER OF HISTORIC PLACES PROPERTY PHOTOGRAPH FORM

FOR NPS USE ONLY

RECEIVED

DATE ENTERED

SEE INSTRUCTIONS IN HOW TO COMPLETE NATIONAL REGISTER FORMS
TYPE ALL ENTRIES ENCLOSE WITH PHOTOGRAPH

1 NAME

HISTORIC

Missouri State Capitol Historic District

AND/OR COMMON

Missouri State Capitol Historic District

2 LOCATION

CITY, TOWN

Jefferson City

— VICINITY OF —

COUNTY

Cole

STATE

Missouri

3 PHOTOREFERENCE

PHOTO CREDIT

M. Patricia Holmes

DATE OF PHOTO July 30, 1974

NEGATIVE FILED AT

Department of Natural Resources, State Historical Survey and
Planning Office, P.O. Box 176, Jefferson City, Missouri 65101

4 IDENTIFICATION

DESCRIBE VIEW, DIRECTION, ETC. IF DISTRICT. GIVE BUILDING NAME & STREET

American Shoe Store, Dallmeyer's Jewelry, Inc., and Key Loan Company, 221-223-
225 East High Street (Sites #28, #27, and #26), southwest facades of adjoining
buildings; view looking northeast. The brick trim is typical of decorative
treatments found on later (dating ca. 1900) commercial buildings.

PHOTO NO 10



Photo, No-12

UNITED STATES DEPARTMENT OF THE INTERIOR
NATIONAL PARK SERVICE

NATIONAL REGISTER OF HISTORIC PLACES PROPERTY PHOTOGRAPH FORM

FOR NPS USE ONLY
RECEIVED
DATE ENTERED

SEE INSTRUCTIONS IN HOW TO COMPLETE NATIONAL REGISTER FORMS
TYPE ALL ENTRIES ENCLOSE WITH PHOTOGRAPH

1 NAME

HISTORIC

Missouri State Capitol Historic District

AND/OR COMMON

Missouri State Capitol Historic District

2 LOCATION

CITY, TOWN

Jefferson City

— VICINITY OF

COUNTY

Cole

STATE

Missouri

3 PHOTO REFERENCE

PHOTO CREDIT

M. Patricia Holmes

NEGATIVE FILED AT

Department of Natural Resources, State Historical Survey and
Planning Office, P.O. Box 176, Jefferson City, Missouri 65101

DATE OF PHOTO July 30, 1974

4 IDENTIFICATION

DESCRIBE VIEW, DIRECTION, ETC. IF DISTRICT. GIVE BUILDING NAME & STREET

PHOTO NO. 12

Missouri-Pacific Railroad Depot (now Amtrak Depot), 301 State Street
(Sites #41 and #42), northeast facade; view looking southwest. The depot
is one of several Romanesque Revival-style buildings in the district, others
being the county courthouse and two churches.



Form No. 10-301a
(Rev. 10-74)

UNITED STATES DEPARTMENT OF THE INTERIOR
NATIONAL PARK SERVICE

NATIONAL REGISTER OF HISTORIC PLACES PROPERTY PHOTOGRAPH FORM

FOR NPS USE ONLY
RECEIVED
DATE ENTERED

SEE INSTRUCTIONS IN HOW TO COMPLETE NATIONAL REGISTER FORMS
TYPE ALL ENTRIES ENCLOSE WITH PHOTOGRAPH

1 NAME

HISTORIC

Missouri State Capitol Historic District

AND/OR COMMON

Missouri State Capitol Historic District

2 LOCATION

CITY, TOWN

Jefferson City

VICINITY OF

COUNTY

Cole

STATE Missouri

3 PHOTO REFERENCE

PHOTO CREDIT

M. Patricia Holmes

DATE OF PHOTO July 23, 1974

NEGATIVE FILED AT

Department of Natural Resources, State Historical Survey and Planning Office, P.O. Box 176, Jefferson City, Missouri 65101

4 IDENTIFICATION

DESCRIBE VIEW, DIRECTION, ETC. IF DISTRICT. GIVE BUILDING NAME & STREET.

Captain Maus Building (Site #36), northeast facade; view looking south-west. Restoration of the building is presently underway through the Jefferson Landing Bicentennial project.

PHOTO NO 11



UNITED STATES DEPARTMENT OF THE INTERIOR
NATIONAL PARK SERVICE

NATIONAL REGISTER OF HISTORIC PLACES PROPERTY PHOTOGRAPH FORM

FOR NPS USE ONLY

RECEIVED

DATE ENTERED

SEE INSTRUCTIONS IN HOW TO COMPLETE NATIONAL REGISTER FORMS
TYPE ALL ENTRIES ENCLOSE WITH PHOTOGRAPH

1 NAME

HISTORIC

Missouri State Capitol Historic District

AND/OR COMMON

Missouri State Capitol Historic District

2 LOCATION

CITY, TOWN

Jefferson City

— VICINITY OF

COUNTY

Cole

STATE

Missouri

3 PHOTO REFERENCE

PHOTO CREDIT

M. Patricia Holmes

DATE OF PHOTO 1974

NEGATIVE FILED AT

Department of Natural Resources, State Historical Survey and
Planning Office, P.O. Box 176, Jefferson City, Missouri 65101

4 IDENTIFICATION

DESCRIBE VIEW, DIRECTION, ETC. IF DISTRICT. GIVE BUILDING NAME & STREET

Carnegie Public Library; 210 Adams Street (Site #45), southeast facade;
view looking northwest. The library was designed by Frank B. Miller,
architect for three other buildings in the district.

PHOTO NO. 13



UNITED STATES DEPARTMENT OF THE INTERIOR
NATIONAL PARK SERVICE

**NATIONAL REGISTER OF HISTORIC PLACES
PROPERTY PHOTOGRAPH FORM**

FOR NPS USE ONLY

RECEIVED

DATE ENTERED

SEE INSTRUCTIONS IN *HOW TO COMPLETE NATIONAL REGISTER FORMS*
TYPE ALL ENTRIES ENCLOSE WITH PHOTOGRAPH

1 NAME

HISTORIC

Missouri State Capitol Historic District

AND/OR COMMON

Missouri State Capitol Historic District

2 LOCATION

CITY, TOWN

Jefferson City

____ VICINITY OF

COUNTY

Cole

STATE

Missouri

3 PHOTO REFERENCE

PHOTO CREDIT

M. Patricia Holmes

DATE OF PHOTO July 23, 1974

NEGATIVE FILED AT

Department of Natural Resources, State Historical Survey and
Planning Office, P.O. Box 176, Jefferson City, Missouri 65101

4 IDENTIFICATION

DESCRIBE VIEW, DIRECTION, ETC. IF DISTRICT. GIVE BUILDING NAME & STREET

PHOTO NO 2

St. Peter's Roman Catholic Church, 216 Broadway (Site #6), southeast facade;
view looking west with partial view of associated church building on the
right. The church is a typical example of the Gothic Revival-style buildings
in the district.







38

1





27

5





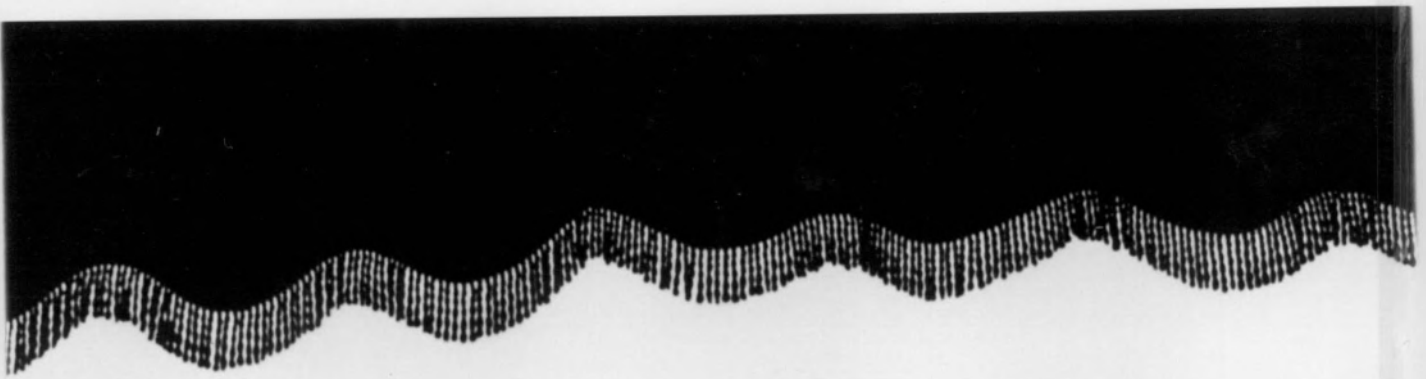


6

01

















33

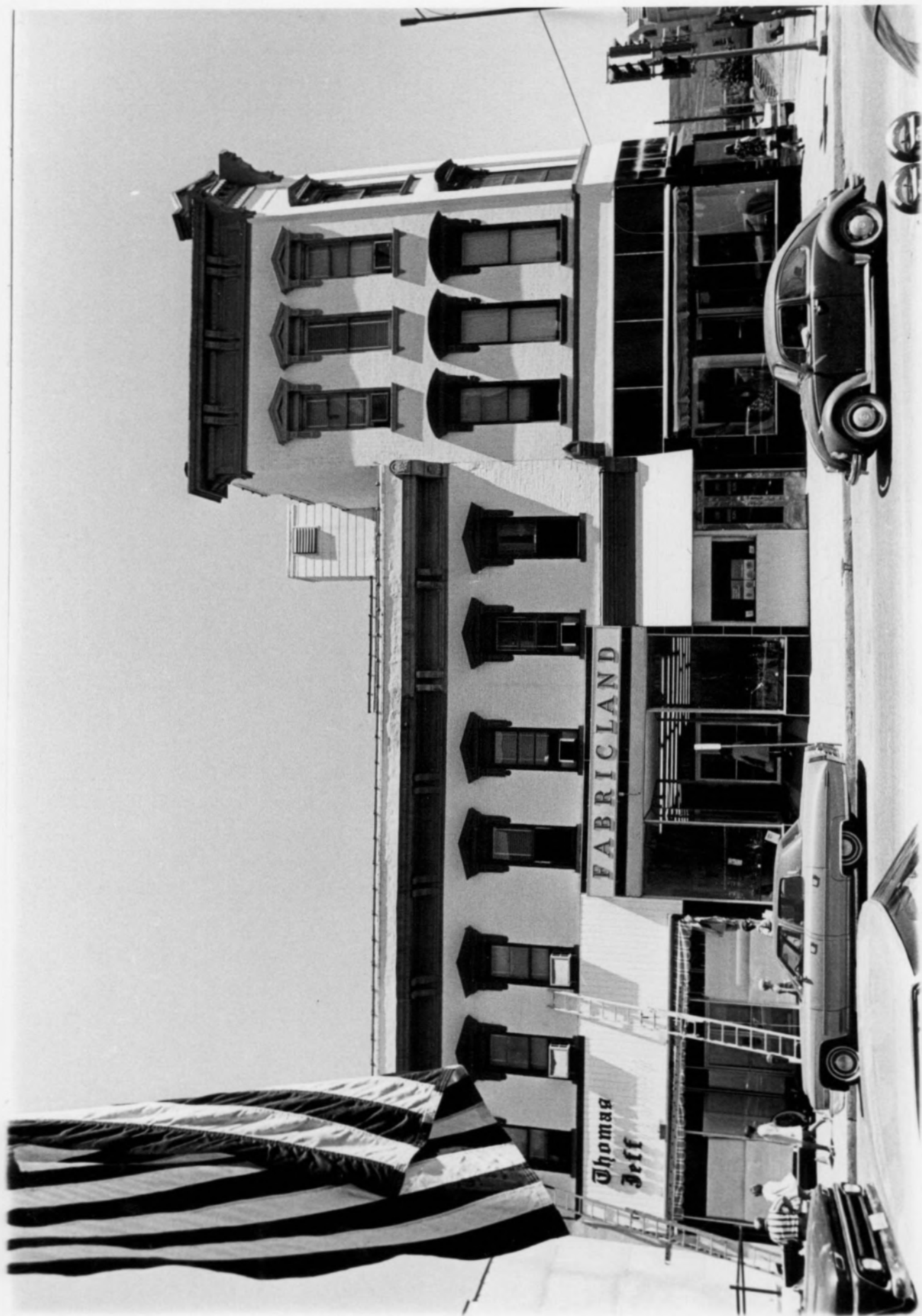
34





26

















62









