

United States Department of the Interior  
National Park Service

### National Register of Historic Places Registration Form

This form is for use in nominating or requesting determinations for individual properties and districts. See instructions in *How to Complete the National Register of Historic Places Registration Form* (National Register Bulletin 16A). Complete each item by marking "x" in the appropriate box or by entering the information requested. If an item does not apply to the property being documented, enter "N/A" for "not applicable." For functions, architectural classification, materials, and areas of significance, enter only categories and subcategories from the instructions. Place additional entries and narrative items on continuation sheets (NPS Form 10-900a). Use a typewriter, word processor, or computer, to complete all items.

#### 1. Name of Property

historic name Mindrup House-store

other names/site number N/A

#### 2. Location

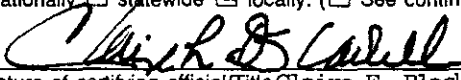
street & number 5543 Water Street n/a not for publication

city or town Augusta n/a vicinity

state Missouri code MO county St. Charles code 183 zip code 63332

#### 3. State/Federal Agency Certification

As the designated authority under the National Historic Preservation Act, as amended, I hereby certify that this  nomination  request for determination of eligibility meets the documentation standards for registering properties in the National Register of Historic Places and meets the procedural and professional requirements set forth in 36 CFR Part 60. In my opinion, the property  meets  does not meet the National Register criteria. I recommend that this property be considered significant  nationally  statewide  locally. ( See continuation sheet for additional comments.)

 7 December 1994  
Signature of certifying official/Title Claire F. Blackwell Date  
Deputy SHPO  
Missouri Department of Natural Resources  
State of Federal agency and bureau

In my opinion, the property  meets  does not meet the National Register criteria. ( See continuation sheet for additional comments.)

\_\_\_\_\_  
Signature of certifying official/Title Date  
\_\_\_\_\_  
State or Federal agency and bureau

#### 4. National Park Service Certification

I hereby certify that the property is:

- entered in the National Register.  
 See continuation sheet.
- determined eligible for the National Register.  
 See continuation sheet.
- determined not eligible for the National Register.
- removed from the National Register.
- other, (explain:)

Signature of the Keeper

Date of Action

\_\_\_\_\_

\_\_\_\_\_

\_\_\_\_\_

\_\_\_\_\_

Mindrup House-store  
Name of Property

St. Charles Co., MO  
County and State

**5. Classification**

**Ownership of Property**  
(Check as many boxes as apply)

- private
- public-local
- public-State
- public-Federal

**Category of Property**  
(Check only one box)

- building(s)
- district
- site
- structure
- object

**Number of Resources within Property**

(Do not include previously listed resources in the count.)

Contributing	Noncontributing	
1	0	buildings
		sites
		structures
		objects
1	0	Total

**Name of related multiple property listing**  
(Enter "N/A" if property is not part of a multiple property listing.)

Historic Resources of Augusta, MO

**Number of contributing resources previously listed in the National Register**

0

**6. Function or Use**

**Historic Functions**

(Enter categories from instructions)

DOMESTIC: single family

DOMESTIC: hotel

COMMERCE: restaurant

**Current Functions**

(Enter categories from instructions)

WORK IN PROGRESS

**7. Description**

**Architectural Classification**

(Enter categories from instructions)

no style

**Materials**

(Enter categories from instructions)

foundation stone

walls weatherboard

brick

roof metal

other \_\_\_\_\_

**Narrative Description**

(Describe the historic and current condition of the property on one or more continuation sheets.)

Mindrup House-store  
Name of Property

St. Charles Co., MO  
County and State

**8. Statement of Significance**

**Applicable National Register Criteria**

(Mark "x" in one or more boxes for the criteria qualifying the property for National Register listing.)

- A** Property is associated with events that have made a significant contribution to the broad patterns of our history.
- B** Property is associated with the lives of persons significant in our past.
- C** Property embodies the distinctive characteristics of a type, period, or method of construction or represents the work of a master, or possesses high artistic values, or represents a significant and distinguishable entity whose components lack individual distinction.
- D** Property has yielded, or is likely to yield, information important in prehistory or history.

**Criteria Considerations**

(Mark "x" in all the boxes that apply.)

Property is:

- A** owned by a religious institution or used for religious purposes.
- B** removed from its original location.
- C** a birthplace or grave.
- D** a cemetery.
- E** a reconstructed building, object, or structure.
- F** a commemorative property.
- G** less than 50 years of age or achieved significance within the past 50 years.

**Areas of Significance**

(Enter categories from instructions)

Commerce

Architecture

**Period of Significance**

ca. 1860-ca. 1905

**Significant Dates**

ca. 1860

ca. 1890

**Significant Person**

(Complete if Criterion B is marked above)

n/a

**Cultural Affiliation**

n/a

**Architect/Builder**

unknown

**Narrative Statement of Significance**

(Explain the significance of the property on one or more continuation sheets.)

**9. Major Bibliographical References**

**Bibliography**

(Cite the books, articles, and other sources used in preparing this form on one or more continuation sheets.)

**Previous documentation on file (NPS):**

- preliminary determination of individual listing (36 CFR 67) has been requested
- previously listed in the National Register
- previously determined eligible by the National Register
- designated a National Historic Landmark
- recorded by Historic American Buildings Survey  
# \_\_\_\_\_
- recorded by Historic American Engineering

**Primary location of additional data:**

- State Historic Preservation Office
- Other State agency
- Federal agency
- Local government
- University
- Other

Name of repository:  
\_\_\_\_\_

Mindrup House-store  
Name of Property

St. Charles Co., MO  
County and State

10. Geographical Data

Acreage of Property less than 1 acre

UTM References

(Place additional UTM references on a continuation sheet.)

1 

1	5	6	8	4	3	9	0	4	2	7	1	0	0	0
Zone			Easting					Northing						

  
2 

Zone			Easting					Northing						

3 

Zone			Easting					Northing						

  
4 

Zone			Easting					Northing						

See continuation sheet

Verbal Boundary Description

(Describe the boundaries of the property on a continuation sheet.)

Boundary Justification

(Explain why the boundaries were selected on a continuation sheet.)

11. Form Prepared By

name/title Mary M. Stiritz

organization \_\_\_\_\_ date 5 January 1994

street & number 12 Wydown Terrace telephone 314 721-6289

city or town St. Louis state MO zip code 63105

Additional Documentation

Submit the following items with the completed form:

Continuation Sheets

Maps

A USGS map (7.5 or 15 minute series) indicating the property's location.

A Sketch map for historic districts and properties having large acreage or numerous resources.

Photographs

Representative black and white photographs of the property.

Additional Items

(Check with the SHPO or FPO for any additional items)

Property Owner

(Complete this item at the request of SHPO or FPO.)

name Forrest Alan Frazier

street & number 2194 Cedar Forrest Court telephone \_\_\_\_\_

city or town Chesterfield state MO zip code 63017

**Paperwork Reduction Act Statement:** This information is being collected for applications to the National Register of Historic Places to nominate properties for listing or determine eligibility for listing, to list properties, and to amend existing listings. Response to this request is required to obtain a benefit in accordance with the National Historic Preservation Act, as amended (16 U.S.C. 470 et seq.).

**Estimated Burden Statement:** Public reporting burden for this form is estimated to average 18.1 hours per response including time for reviewing instructions, gathering and maintaining data, and completing and reviewing the form. Direct comments regarding this burden estimate or any aspect

United States Department of the Interior  
National Park ServiceNational Register of Historic Places  
Continuation SheetSection number 7 Page 1Mindrup House-store  
Augusta, St. Charles Co., MO  
Historic Resources of Augusta, MO MPS

The Mindrup House-store is a circa 1860 3-story, half-timbered building with a circa 1890 2-story brick and frame addition located at 5543 Water Street in Augusta, Missouri (Property Type: Vernacular Residence, Subtype: house-store). Features which identify the building as a member of its property type include an unembellished design; a simple, traditional plan; half-timbered construction; and combination first story commercial use with second story residential which is characteristic of the house-store subtype. The building remains little altered despite the encroachment of flood waters during the summer of 1993 which removed the front first story wall of the 3-story section.

Facing south, the 3-story circa 1860 building features fachwerk construction (a wood structural frame filled-in with brick nogging) which is now partially exposed on the east elevation where roman numeral markings on the timbers (a system for identifying positions on the frame at the time of assembly) are visible. Weatherboarding originally covered the entire building which is now boarded on the second floor for protection. The side-gabled roof is sheathed with tin. The ground floor is exposed on the primary (south) elevation as a result of water damage incurred during the flooding of the Missouri River in 1993. A partition wall divides each floor (east/west) into a wide stairhall and a single east room. The east chamber of the first floor features a brick chimney with flue hole on the east wall; the stone north wall is pierced with a wide segmentally arched doorway leading to a former wine cellar. Stairs to the upper floors are located against the west wall of the west chamber.

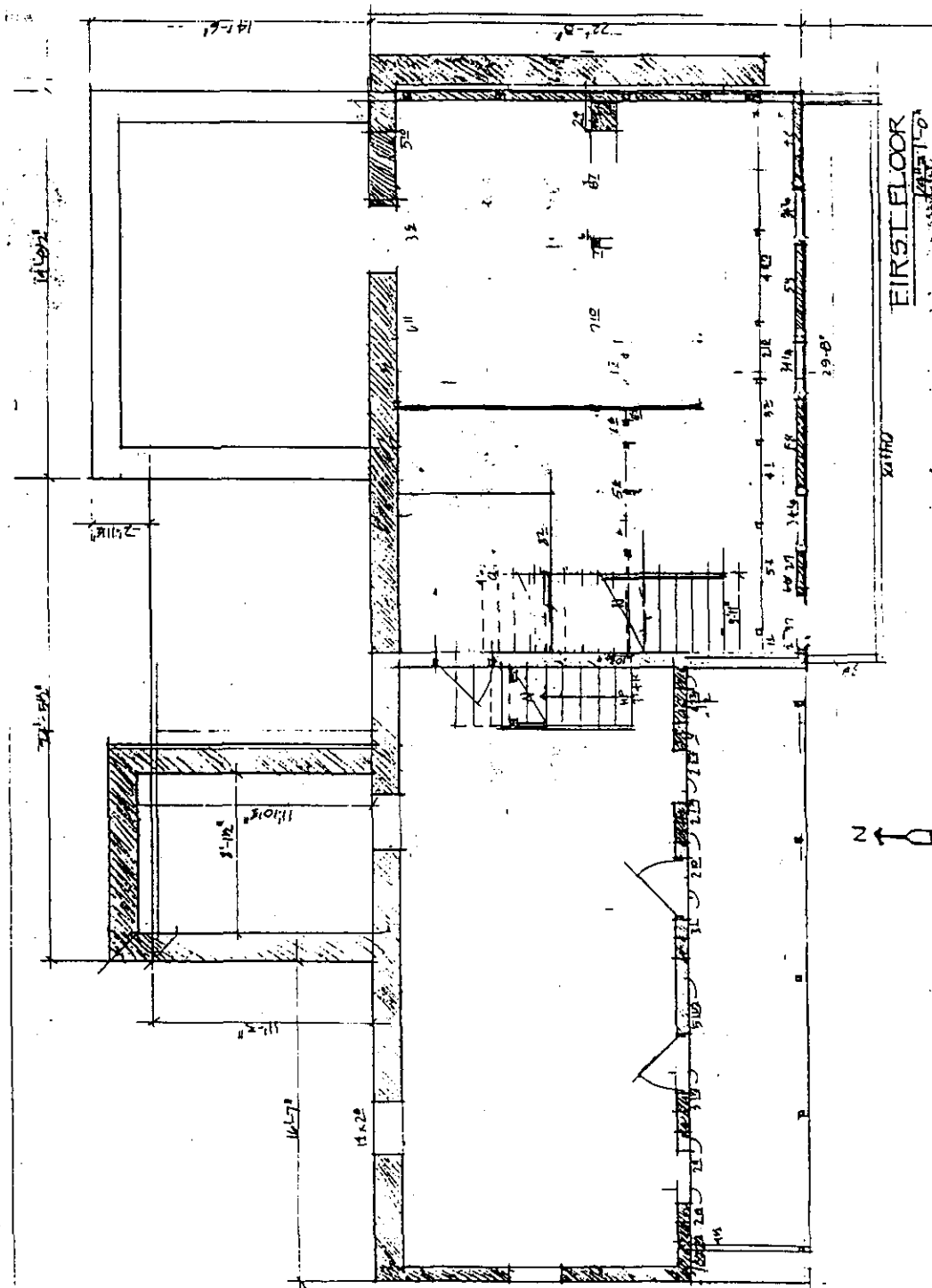
The circa 1890 2-story brick and frame addition joins the west elevation of the fachwerk building. A tin-covered hipped roof covers the building. First story brick and second story frame elevations of the primary facade are both articulated with transomed doors in the center bays flanked by a single window of double-hung sash; brick double row-lock segmental arches are employed on the first floor. A two-story wood porch supported by spindle posts extends across the primary facade. A small first floor room (probably used for wine storage) opening on the west elevation features a vaulted brick ceiling.

United States Department of the Interior  
National Park Service

# National Register of Historic Places Continuation Sheet

Section number 7 Page 2

Mindrup House-store  
Augusta, St. Charles Co., MO  
Historic Resources of Augusta, MO MPS



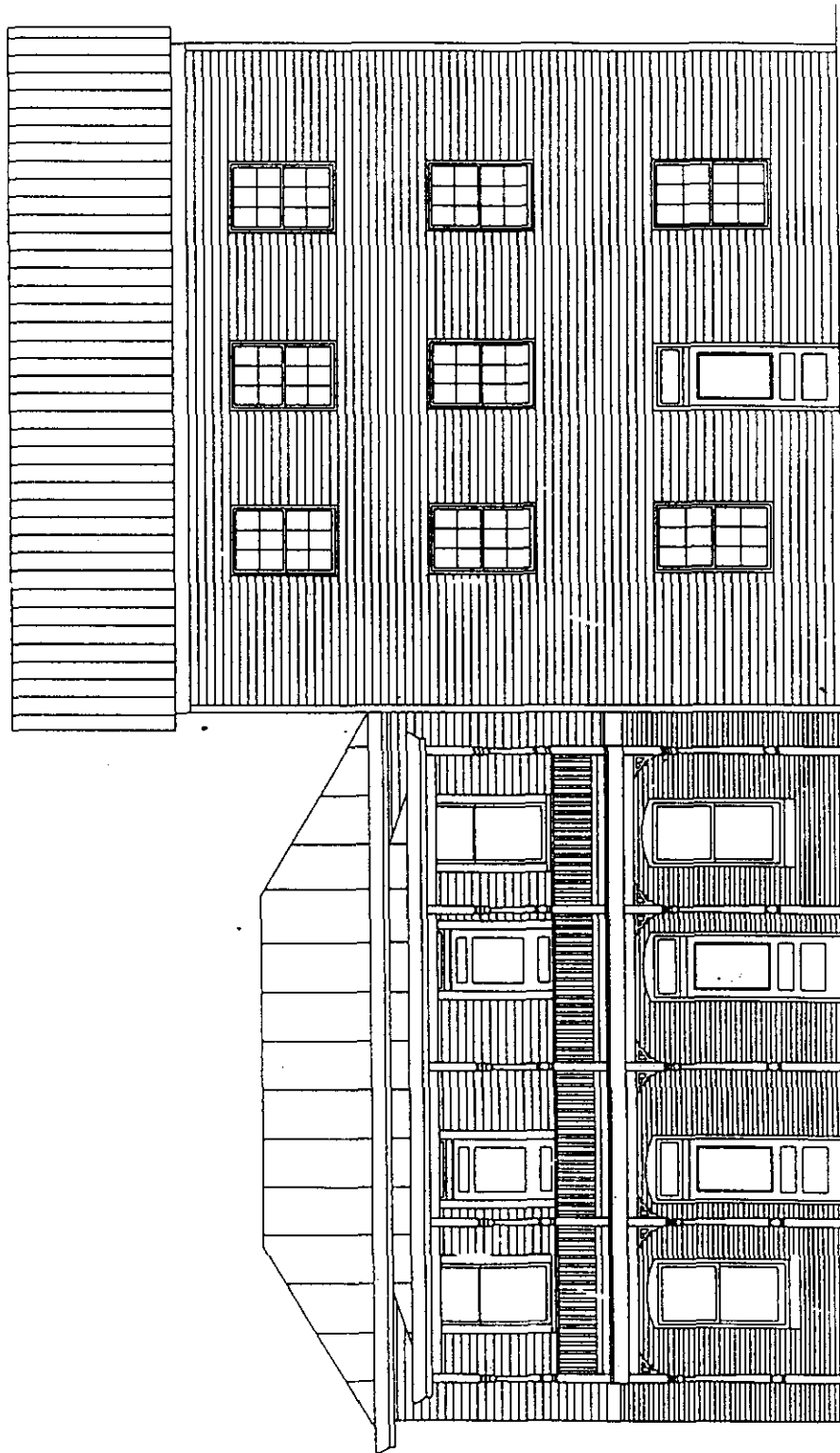
CLAYBOUR ARCHITECTS  
ST. LOUIS, MO

United States Department of the Interior  
National Park Service

# National Register of Historic Places Continuation Sheet

Section number 7 Page 3

Mindrup House-store  
Augusta, St. Charles Co., MO  
Historic Resources of Augusta, MO MPS



AYBOUR ARCHITECTS  
· LOUIS, MO

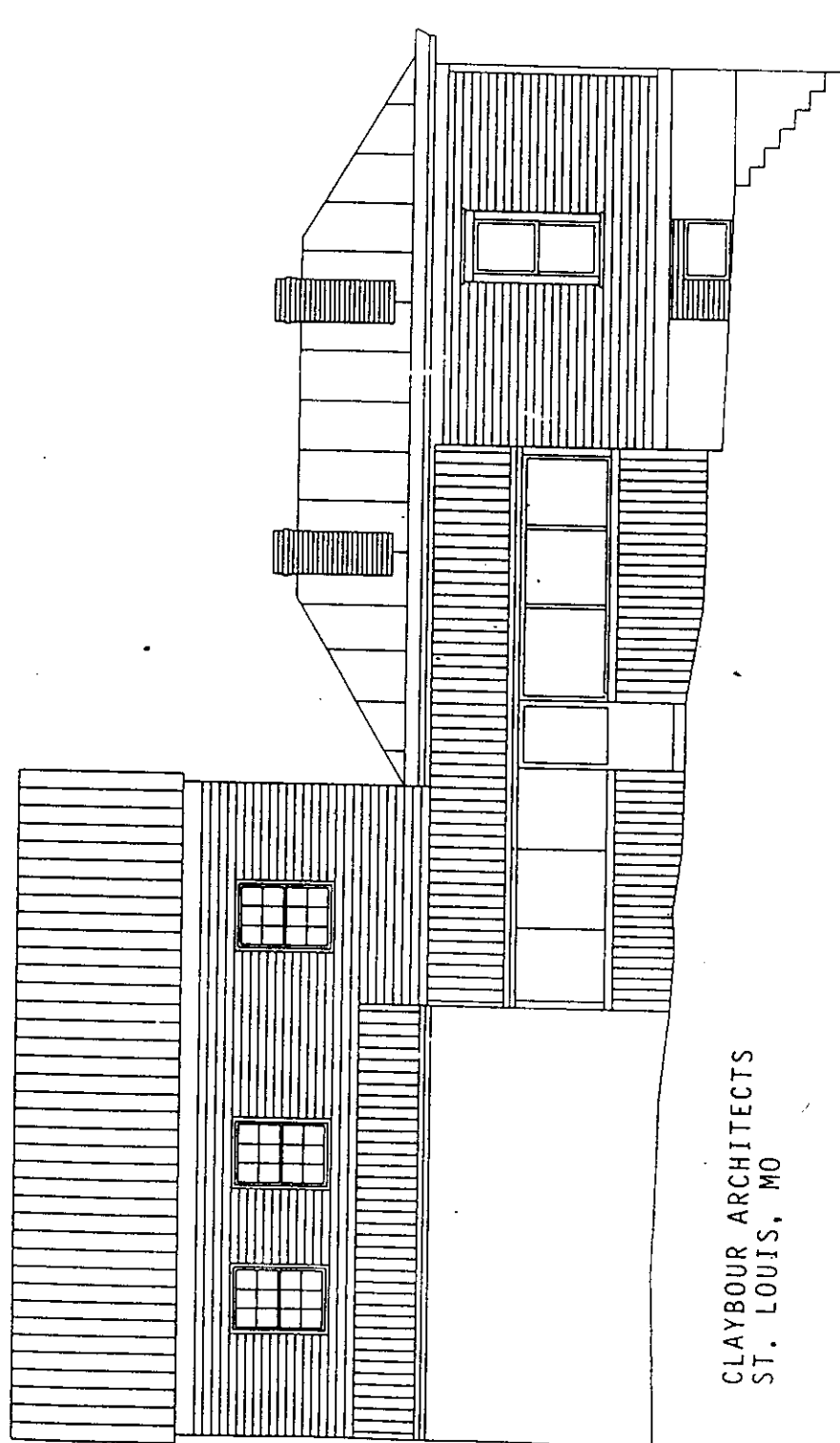
SOUTH ELEVATION

United States Department of the Interior  
National Park Service

# National Register of Historic Places Continuation Sheet

Section number 7 Page 4

Mindrup House-store  
Augusta, St. Charles Co., MO  
Historic Resources of Augusta, MO MPS



CLAYBOUR ARCHITECTS  
ST. LOUIS, MO

NORTH ELEVATION

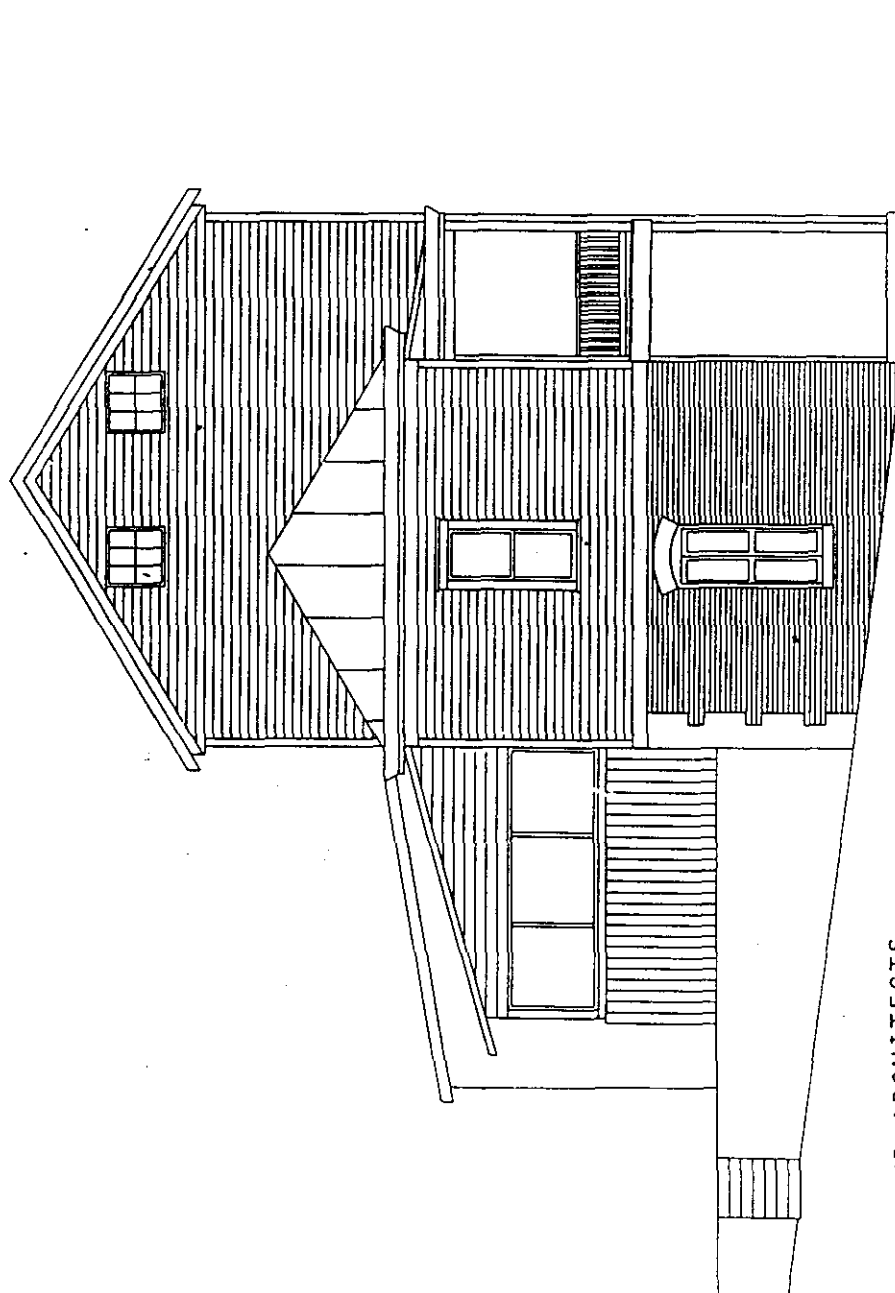


United States Department of the Interior  
National Park Service

# National Register of Historic Places Continuation Sheet

Section number 7 Page 5

Mindrup House-store  
Augusta, St. Charles Co., MO  
Historic Resources of Augusta, MO MPS



CLAYBOUR ARCHITECTS  
ST. LOUIS, MO

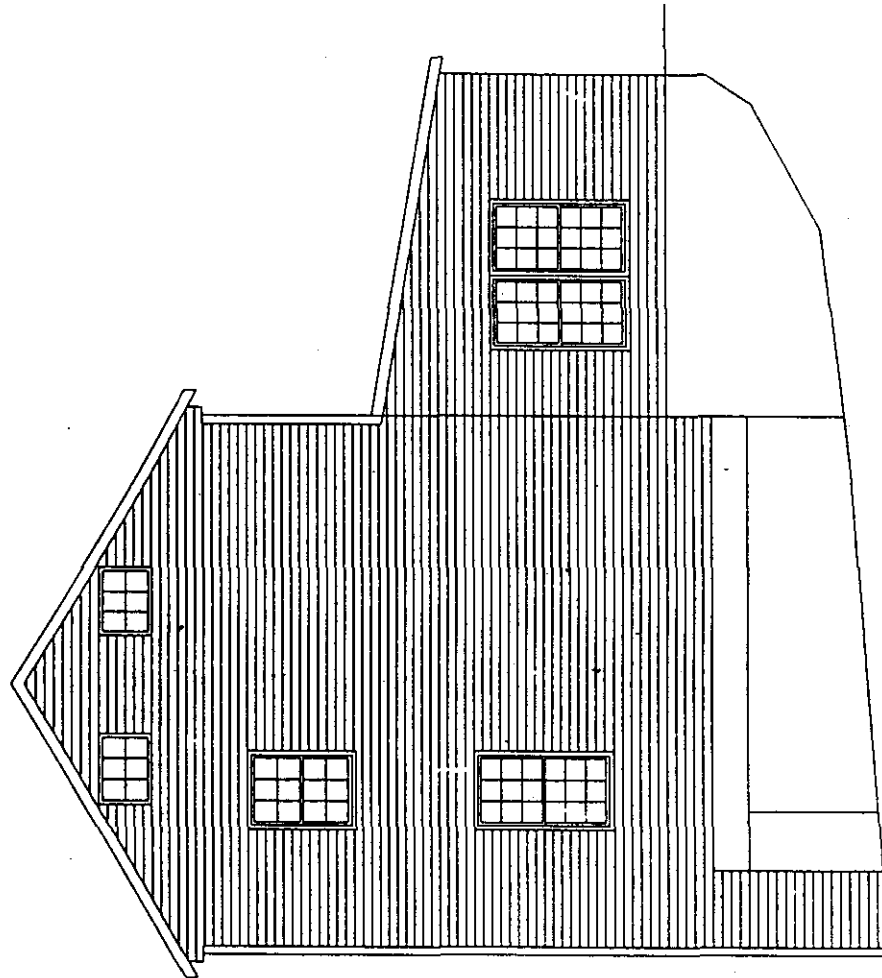
WEST ELEVATION

United States Department of the Interior  
National Park Service

# National Register of Historic Places Continuation Sheet

Section number 7 Page 6

Mindrup House-store  
Augusta, St. Charles Co., MO  
Historic Resources of Augusta, MO MPS



EAST ELEVATION

CLAYBOUR ARCHITECTS  
ST. LOUIS, MO

United States Department of the Interior  
National Park ServiceNational Register of Historic Places  
Continuation SheetSection number 8 Page 7Mindrup House-store  
Augusta, St. Charles Co., MO  
Historic Resources of Augusta, MO MPS

The Mindrup House-store is eligible for listing in the National Register under Criteria A and C and is significant in the following areas: ARCHITECTURE: The circa 1860 3-story building (Property Type: Vernacular Residence, subtype: house-store) is the largest and most significant example of fachwerk construction in the Augusta area. The method of construction is closely associated with Missouri German vernacular building traditions. See Historic Context subtheme, "Architecture ca.1836-1943". COMMERCE: The building is the only historic building which survives along the former riverfront and later railtracks, where it served as one of the principal hotels/saloons in the area. See Historic Context, "German American Culture In Augusta, 1833-1944" and subthemes. The period of significance was terminated in 1905 when a County Plat identified the property as a hotel; the property may have continued to have commercial significance beyond 1905 but no documentary evidence was found to support this.

According to the 1875 St. Charles County Atlas, George H. Mindrup arrived in St. Charles County in 1849 from his native Germany and was in business as a saloon keeper. He was listed in the 1850 Federal census in the Augusta area engaged in farming. On March 6, 1852, Mindrup purchased Lot 5 in Block 7, the parcel on which the building stands (Deed Book Z, page 327). The purchase price of \$408.55 suggests the lot was improved. The 1860 census reported Mindrup born in Hannover, Germany, a 39 year old grocer living with his wife, Katharina Francisca (born in Saxe Weimar), and four Missouri-born children. The Federal Agricultural Census of 1860 included Mindrup's 1/2 acre farm (listed in the Town of Augusta) which was valued at \$2500; no produce or livestock were reported. A State Census taken in 1868 showed he had produced 240 gallons of wine that year. Mindrup served as a County Court Judge four years, and was a charter member of the Augusta Harmonie Verein. At his death in 1875, he left his widow and four minor children. His sizable estate (over \$14,000) included real estate in four city blocks in Augusta and a substantial inventory of wine and liquor. In 1920, the property was still in the name of his widow who, according to data in the 1900 and 1910 censuses, was born in 1827, emigrated in 1840, spoke only German, and was the mother of 11 children, four of whom were living.

The building history of the Mindrup House-store is somewhat unclear although an insurance policy issued to Mindrup in November 1864 by

United States Department of the Interior  
National Park Service

## National Register of Historic Places Continuation Sheet

Section number 8 Page 8

Mindrup House-store  
Augusta, St. Charles Co., MO  
Historic Resources of Augusta, MO MPS

the St. Charles Mutual Fire Insurance Company does establish the existence in 1864 of the three-story section of the building. This \$1000 policy covered a "Log and Frame House, partly two stories and partly three stories high, and occupied for Dwelling, Barroom and Warehouse, situated on Lot 5, Block 7, Southeast corner of Water and Public Streets." The "two-story" and "log" section mentioned in the policy most probably referred to an earlier building which formerly stood on the site now occupied by the brick first-story and frame second-story addition. This possibility is supported by the absence today of any log construction in the building, and also by a 1964 letter from a lifetime resident of Augusta to a St. Charles County historian which stated that the original building on the corner "was included in the early days but it was torn down on account of age and having to make room for a road coming down the hill from town... what you see now was built many years later." (1) As late as 1888 widow Katharina F. Mindrup's insurance policy on the building described it as a "two and three story frame dwelling house", indicating that the present brick first-story and frame second-story building was not there.

As indicated by George Mindrup's varied occupations (grocer, saloon and hotel keeper), the building served many purposes although specific functional divisions of the house-store are unknown. Advantageously located on the Missouri riverfront until the waterway began to change course in 1872, the Mindrup house-store was a center of trade during the commercial heyday of Augusta's wine industry. After rail tracks were laid along Water Street in 1891, the Mindrup hotel and saloon sustained its commercial prominence, offering services to train travelers who disembarked at the depot across the street. With the loss of the train depot and other commercial properties, the Mindrup house-store today is the only remaining historic property along the former riverfront and railline, and thus conveys the strongest associations with important eras in the town's commercial life.

United States Department of the Interior  
National Park Service

## National Register of Historic Places Continuation Sheet

Section number 8,9,10 Page 9

Mindrup House-store  
Augusta, St.Charles Co., MO  
Historic Resources of Augusta, MO MPS

### Notes

(1) Mrs. Frieda Ahl to Mrs. McElhiney Olson, 25 June 1964, St. Charles County Historical Society Archives, St. Charles, MO.

### 9. Major Bibliographical References:

St. Charles, MO. St. Charles County Historical Society Archives.  
Mrs. Frieda Ahl to Mrs. McElhiney Olsen, 25 June 1964.

(See Section I of the Multiple Property Document, "Historic Resources of Augusta, Missouri" for additional references.

### 10. Geographical Data

#### Verbal Boundary Description:

Lot 5, Block 7 of the Original Town of Augusta; boundaries are indicated by the heavy broken line on the map entitled, "Architectural Survey of Augusta, Missouri", scale 1" = 100'.

#### Boundary Justification:

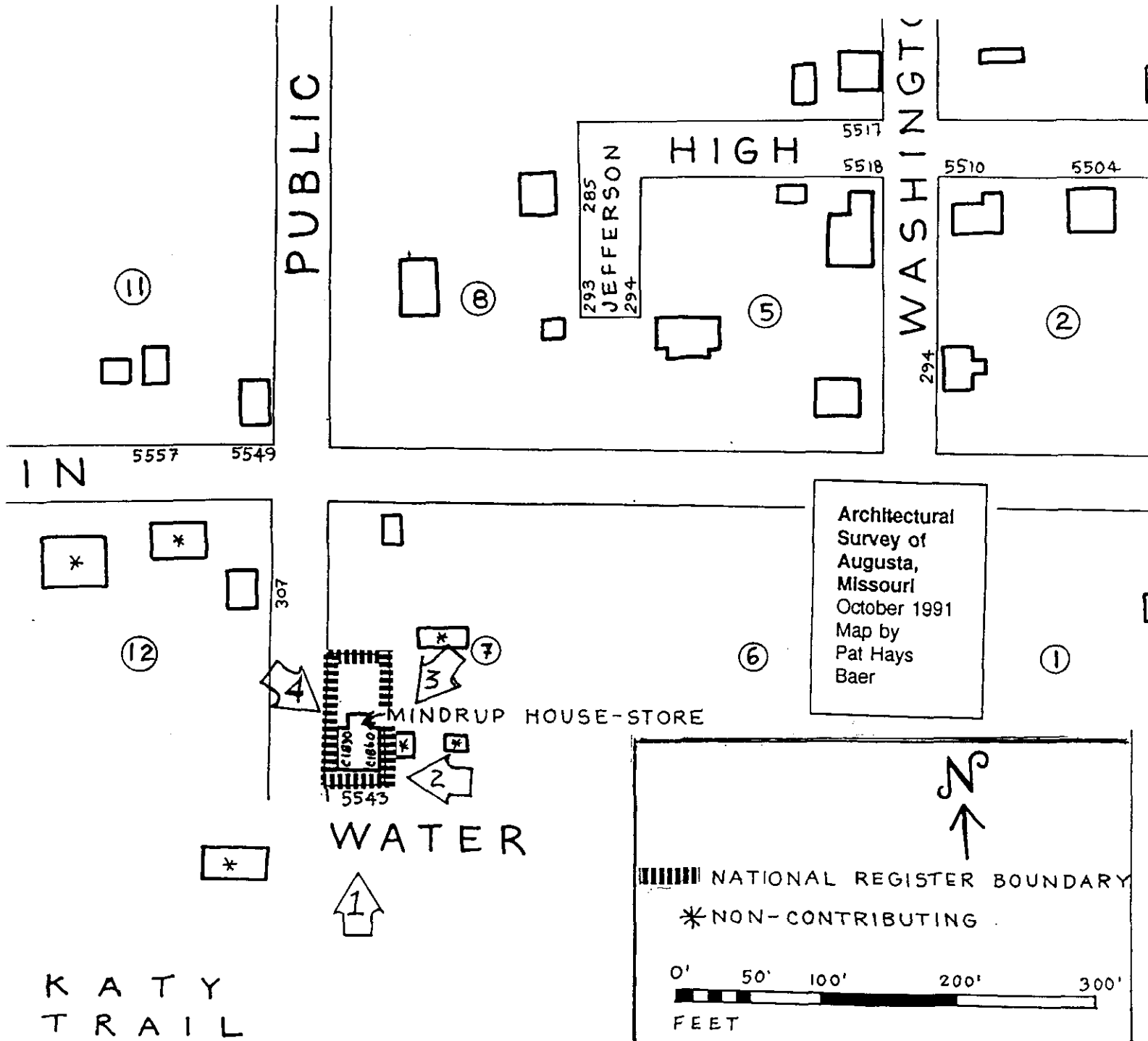
The nominated property includes all of the land that historically has been associated with it.

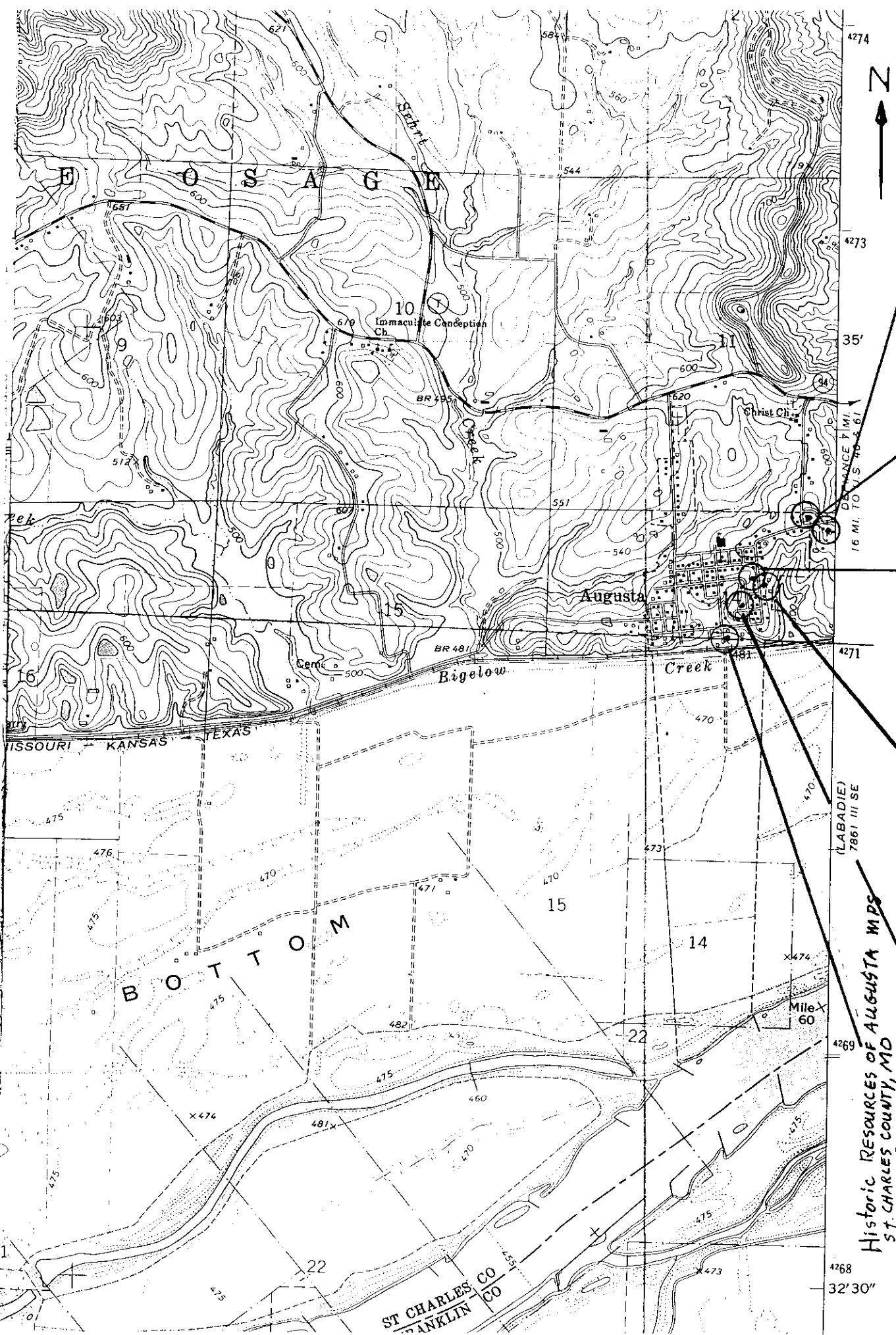
United States Department of the Interior  
National Park Service

# National Register of Historic Places Continuation Sheet

Section number 10 Page 10

Mindrup House-store  
Augusta, St. Charles Co., MO  
Historic Resources of Augusta, MO MPS





EWICH, ROBERT  
 FAMOSTEAD  
 5336 HACKMAN ROAD  
 AUGUSTA, ST. CHARLES  
 COUNTY, MO  
 15/684865/4271540

AUGUSTA HARMONIE VERBIN  
 NE CORNER HACKMAN +  
 CHURCH ROADS  
 AUGUSTA, ST. CHARLES COUNTY  
 MO  
 15/684770/4271600

GERLING, DR. G.L., HOUSE  
 245 LOWER ST.  
 AUGUSTA, ST. CHARLES  
 COUNTY, MO  
 15/684500/4271290

SCHROWER, J.F. HOUSE-STORE  
 252 LOWER ST.  
 AUGUSTA, ST. CHARLES COUNTY  
 MO  
 15/684570/4271260

FARRIS, CHARLES MCLEE  
 HOUSE  
 5517 HIGH ST.  
 AUGUSTA, ST. CHARLES  
 COUNTY, MO  
 15/684460/4271160

MINDRUP HOUSE-STORE  
 5543 WATER ST.  
 AUGUSTA, ST. CHARLES COUNTY  
 MO  
 15/684390/4271000

Historic Resources of AUGUSTA MPS  
 ST. CHARLES COUNTY, MO

4274  
 4273  
 35'  
 16 MI. TO U.S. 40-A-61  
 4271  
 (LABADIE)  
 7861 III SE  
 4269  
 4268  
 32'30"

- 1) MINDRUP HOUSE-STOLE
- 2) ALEXSTA, St. Charles County, MO
- 3) MARY STREITZ
- 4) Dec. 1993
- 5) MO Dept of Natural Resources
- 6) PRIMARY (SOUTH) elev.  
CAMERA facing NORTH
- 7) # 1

1  
7/11

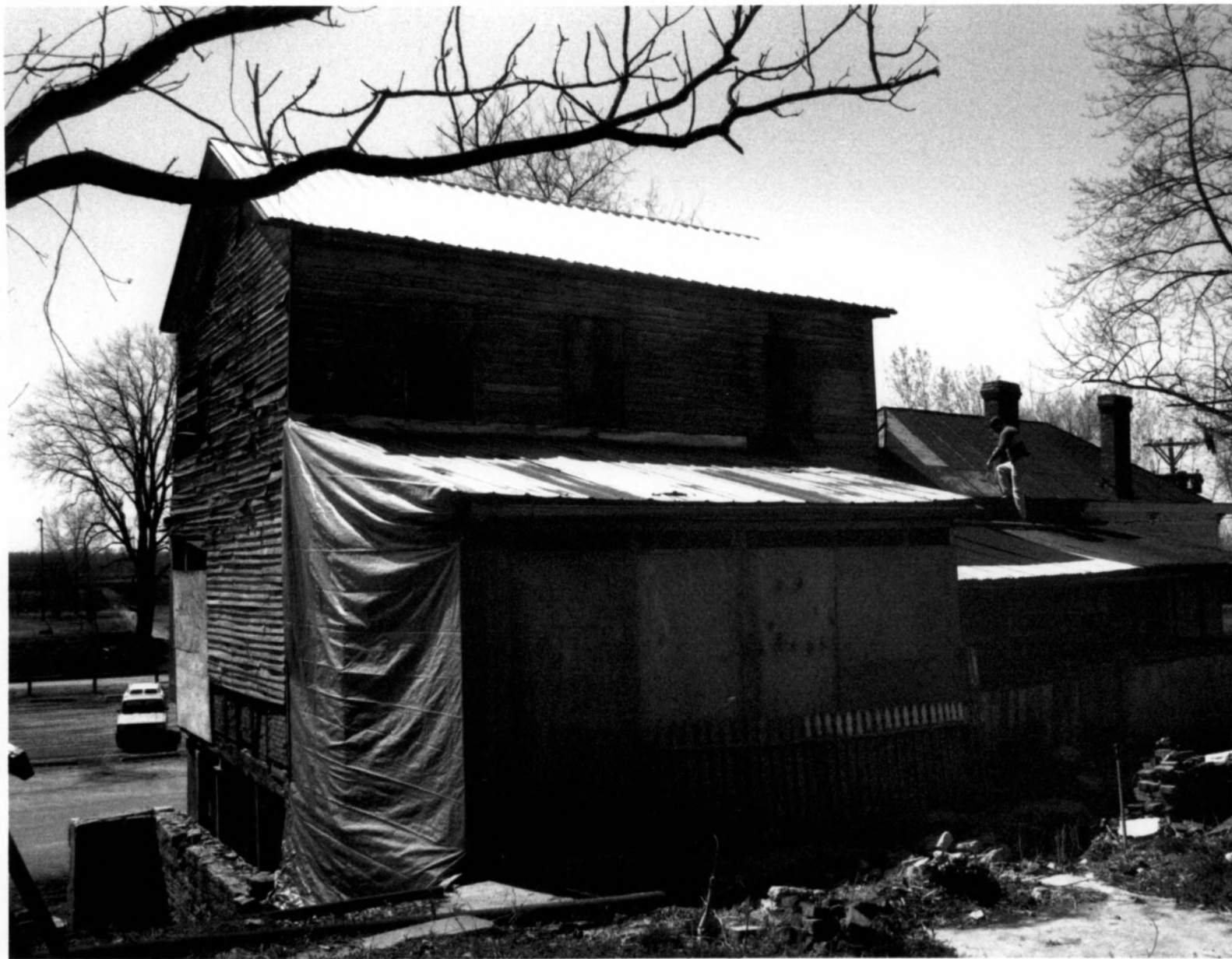




- 1) MINDRUP HOUSE-SKRE
- 2) AUGUSTA, St. Charles County, MO
- 3) MARY STIRITZ
- 4) Dec. 1993
- 5) MO Dept. of NATURAL RESOURCES
- 6) detail of east wall  
camera facing west
- 7) # 2



- 1) MINORUP HOUSE START
- 2) AUGUSTA, St. Charles County, MO
- 3) MARY STIRITZ
- 4) DEC. 1993
- 5) MO DEPT NATURAL RESOURCES
- 6) REAR (NORTH) + east elevs
- 7) #3

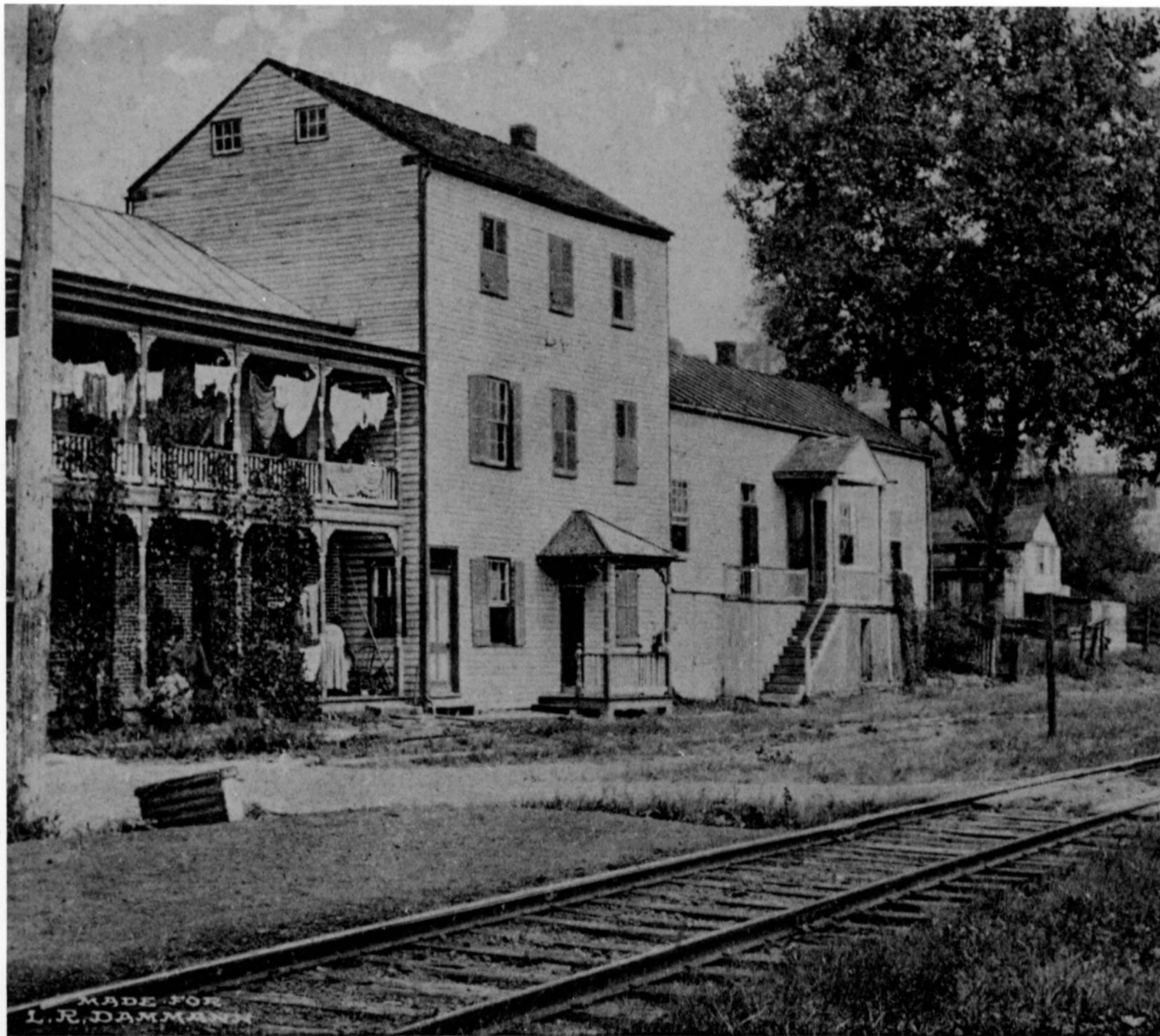


- 1) WINDRUP HOUSE-STORE
- 2) AUGUSTA, St. Charles County, MO
- 3) MARY STIEBITZ
- 4) DEC. 1993
- 5) MO DEPT. NATURAL RESOURCES
- 6) REAR (NORTH) + WEST ELEV.  
CAMERA FACING SE
- 7) # 4



- 1) MINDROP HOUSE-store
- 2) Augusta, St. Charles County, MO
- 3) UNKNOWN
- 4) ca. 1900
- 5) MO DEPT. Natural Resources
- 6) Historic view, south elev.  
CAMERA facing NW
- 7) #5





MADE FOR  
L. R. DAMMANN

HOTEL AND RESIDENCE, AUGUSTA,

- 1) MINDRUP HOUSE - STORE
- 2) AUGUSTA, St. Charles County, Mo
- 3) MARY STIRITZ
- 4) MAR. 1993
- 5) MO DEPT. NATURAL RESOURCES
- 6) INTERIOR, 1ST FLOOR (West addition)  
CAMERA facing NE
- 7) # 6



- 1) MINORUP HOUSE-STORE
- 2) AUGUSTA, St. Charles County, MO
- 3) MARY STIRITZ
- 4) MARCH 1994
- 5) MO DEPT. NATURAL RESOURCES
- 6) Interior, 2nd floor ca. 1860 East Bldg.  
CAMERA facing NW
- 7) # 7

