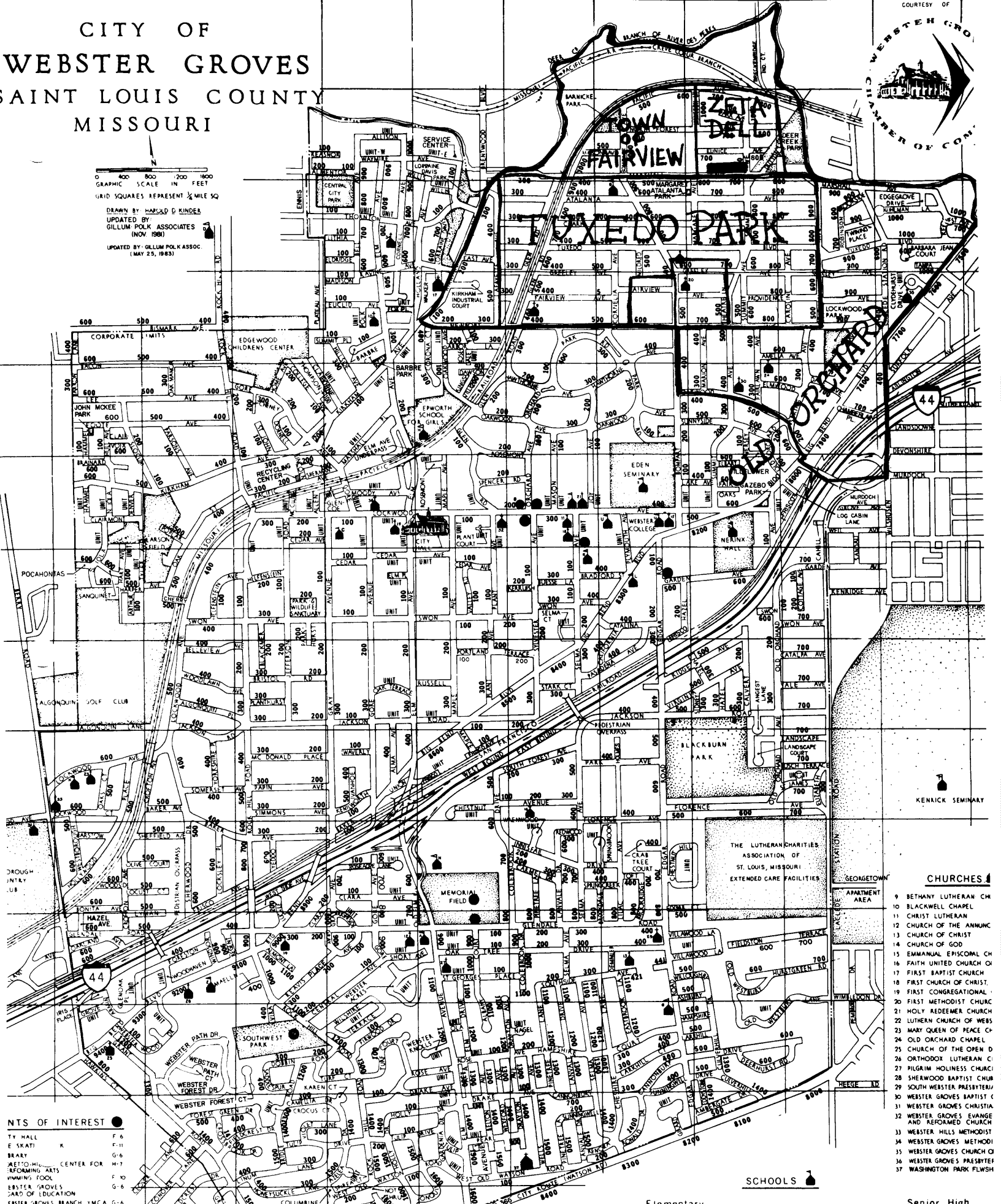


# CITY OF WEBSTER GROVES SAINT LOUIS COUNTY MISSOURI



GRAPHIC SCALE IN FEET  
GRID SQUARES REPRESENT 1/4 MILE SQ

DRAWN BY HAROLD D. KINDER  
UPDATED BY GILLUM POLK ASSOCIATES (NOV. 1981)  
UPDATED BY GILLUM POLK ASSOC. (MAY 25, 1983)



- POINTS OF INTEREST**
- 1. TY HALL F-6
  - 2. E SKATI K F-11
  - 3. BRARY G-6
  - 4. METRO-HIL CENTER FOR REFORMING ARTS F-7
  - 5. HANING'S BOOK F-10
  - 6. WEBSTER GROVES CARD OF EDUCATION G-6
  - 7. WEBSTER GROVES BRANCH YMCA G-6
  - 8. T. LOUIS ARTIST GUILD G-6
  - 9. AWKIN HOUSE (HISTORICAL) D-12

- PARKS**
- 1. MARNICHE PARK H-2
  - 2. JACKBURN PARK I-9
  - 3. JASSON FIELD C-4
  - 4. LOCKWOOD PARK J-4
  - 5. MEMORIAL FIELD F-10
  - 6. SOUTHWEST PARK D-12
  - 7. GAZEDO PARK I-6
  - 8. BARBRE PARK E-4, E-5

- Elementary**
- A ANNUNCIATION CATHOLIC GRADE
  - B AVERY SCHOOL
  - C BRISTOL SCHOOL
  - D STERGER SCHOOL
  - E CLARK SCHOOL
  - G EDGAR ROAD SCHOOL
  - H EPWORTH GIRLS SCHOOL
  - I HOLY REDEEMER CATHOLIC GRADE

- Junior High**
- F-11
  - H-3
  - E-6
  - C-3
  - C-11
  - H-12
  - F-5
  - G-6

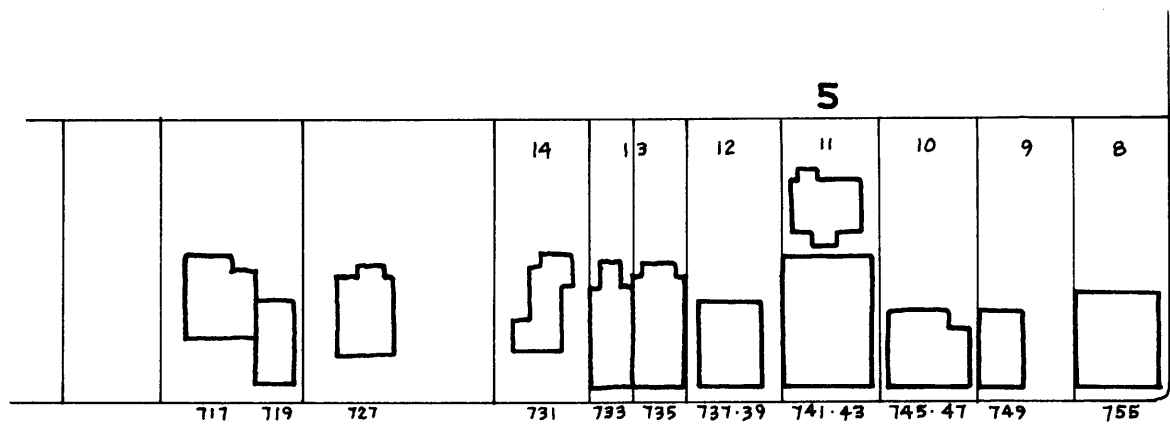
- Senior High**
- Q NERINK HALL
  - R WEBSTER GROVES SENIOR
  - S-9
  - H-7
  - E-14

- College**
- S EDEN SEMINARY
  - T KENRICK SEMINARY
  - F-10

- CHURCHES**
- 9 BETHANY LUTHERAN CH
  - 10 BLACKWELL CHAPEL
  - 11 CHRIST LUTHERAN
  - 12 CHURCH OF THE ANNUNC
  - 13 CHURCH OF CHRIST
  - 14 CHURCH OF GOD
  - 15 EMMANUEL EPISCOPAL CH
  - 16 FAITH UNITED CHURCH O
  - 17 FIRST BAPTIST CHURCH
  - 18 FIRST CHURCH OF CHRIST
  - 19 FIRST CONGREGATIONAL
  - 20 FIRST METHODIST CHURC
  - 21 HOLY REDEEMER CHURCH
  - 22 LUTHERAN CHURCH OF WEB
  - 23 MARY QUEEN OF PEACE CH
  - 24 OLD ORCHARD CHAPEL
  - 25 CHURCH OF THE OPEN D
  - 26 ORTHODOX LUTHERAN C
  - 27 PILGRIM HOLINESS CHUR
  - 28 SHERWOOD BAPTIST CHUR
  - 29 SOUTH WEBSTER PRESBYTERI
  - 30 WEBSTER GROVES BAPTIST C
  - 31 WEBSTER GROVES CHRISTIA
  - 32 WEBSTER GROVES EVANGEL
  - 33 WEBSTER HILLS METHODIST
  - 34 WEBSTER GROVES METHODO
  - 35 WEBSTER GROVES CHURCH C
  - 36 WEBSTER GROVES PRESBYTE
  - 37 WASHINGTON PARK FLWISH

**SCHOOLS**

**CHURCHES**



MARSHALL AVE.

MARSHALL AVENUE BUSINESS DISTRICT  
WEBSTER GROVES, MISSOURI

SUMMIT



1"=100'