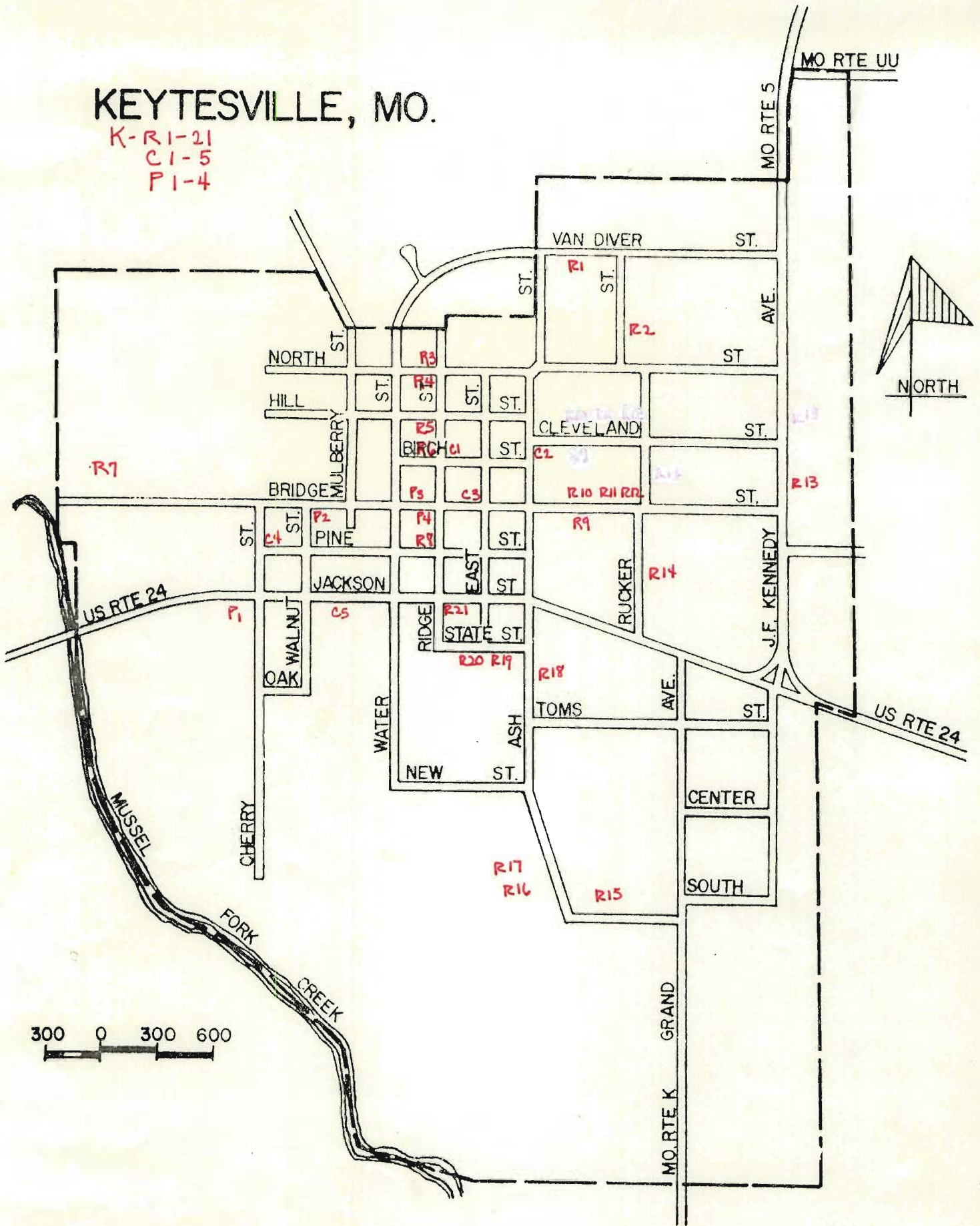
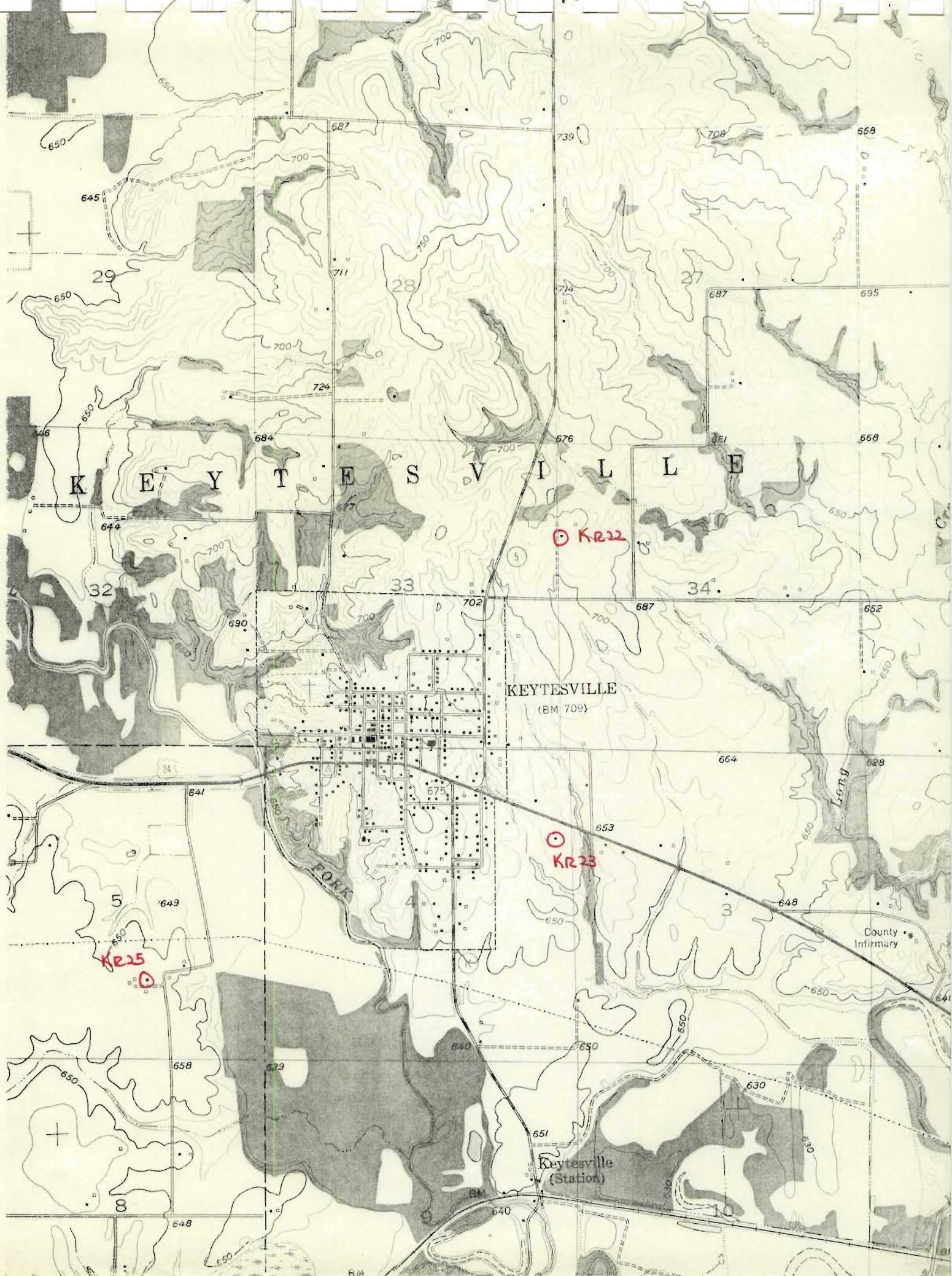


# KEYTESVILLE, MO.

K-R1-21  
C1-5  
P1-4







KEYTESVILLE

KEYTESVILLE  
(BM 709)

○ KR22

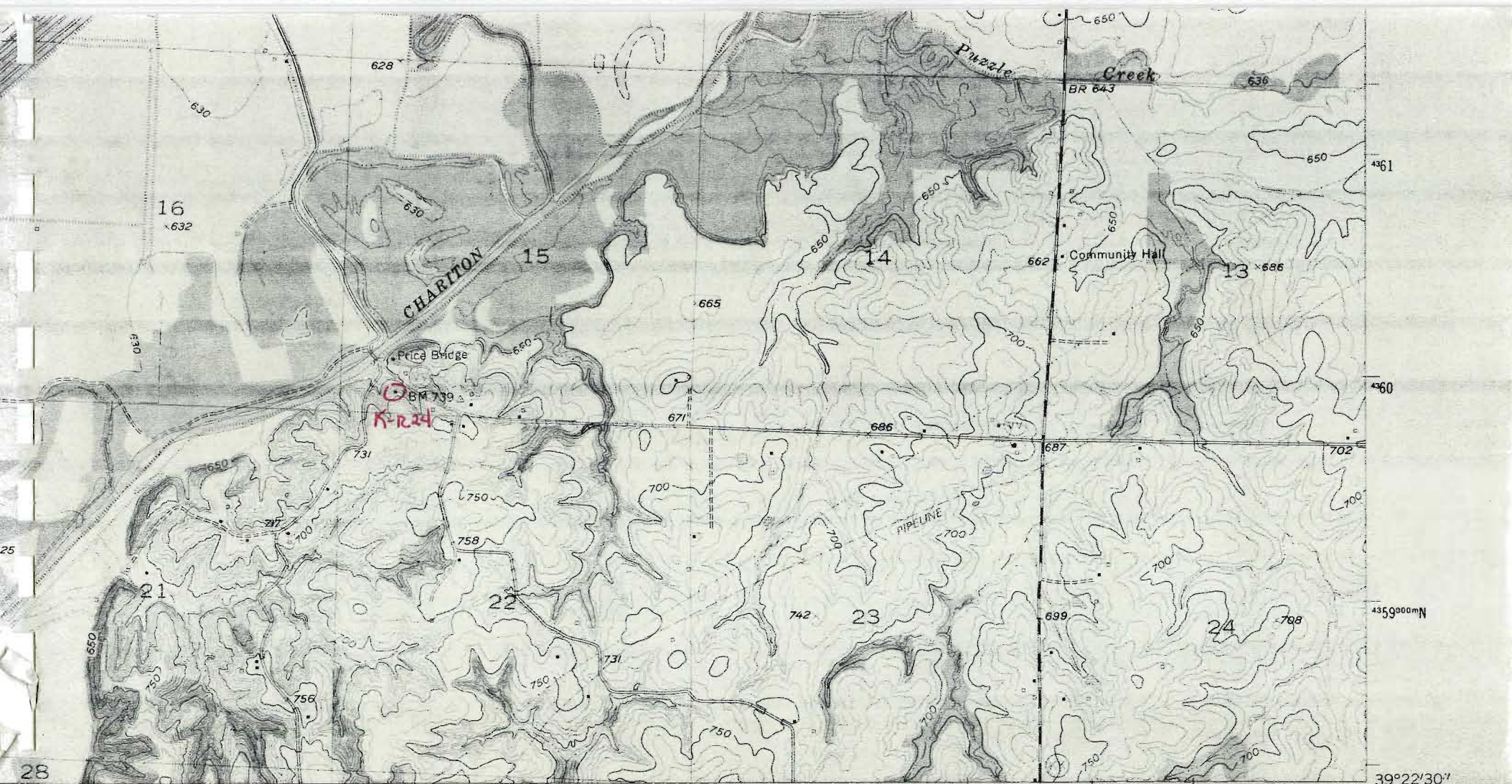
○ KR23

○ KR25

Keytesville  
(Station)

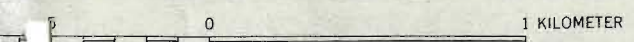
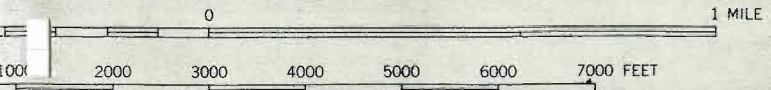
County  
Infirmary





905 (CAMBRIDGE) 7462 IV SW 906 907 55'

SCALE 1:24000



CONTOUR INTERVAL 10 FEET  
 NATIONAL GEODETIC VERTICAL DATUM OF 1929  
 COMPLIES WITH NATIONAL MAP ACCURACY STANDARDS  
 NATIONAL SURVEY, DENVER, COLORADO 80225, OR RESTON, VIRGINIA 22092  
 DIVISION OF RESEARCH AND TECHNICAL INFORMATION  
 DEPARTMENT OF NATURAL RESOURCES, ROLLA, MISSOURI 65401  
 ADDITIONAL TOPOGRAPHIC MAPS AND SYMBOLS IS AVAILABLE ON REQUEST



ROAD CLASSIFICATION

Heavy-duty	—————	Light-duty	—————
Medium-duty	—————	Unimproved dirt	-----
U.S. Route	□	State Route	○

KEYTESVILLE, MO.  
 N 3922.5 — W 9252.5 / 7.5

1956  
 PHOTOREVISED 1978  
 AMS 7462 IV NW—SERIES V879

(FOREST GREEN)  
 7462 IV SE