

United States Department of the Interior  
National Park Service

# National Register of Historic Places Registration Form

This form is for use in nominating or requesting determinations of eligibility for individual properties or districts. See instructions in *Guidelines for Completing National Register Forms* (National Register Bulletin 16). Complete each item by marking "x" in the appropriate box or by entering the requested information. If an item does not apply to the property being documented, enter "N/A" for "not applicable." For functions, styles, materials, and areas of significance, enter only the categories and subcategories listed in the instructions. For additional space use continuation sheets (Form 10-900a). Type all entries.

### 1. Name of Property

historic name Hillview Cooperative Dairy Farm Historic District  
other names/site number \_\_\_\_\_

### 2. Location

street & number Missouri Highway T and Hillview Road  N/A not for publication  
city, town Hughesville  vicinity  
state Missouri code MO county Pettis code 159 zip code 65334

### 3. Classification

Ownership of Property	Category of Property	Number of Resources within Property	
<input checked="" type="checkbox"/> private	<input type="checkbox"/> building(s)	Contributing	Noncontributing
<input type="checkbox"/> public-local	<input checked="" type="checkbox"/> district	<u>7</u>	<u>3</u> buildings
<input type="checkbox"/> public-State	<input type="checkbox"/> site	<u>3</u>	<u>3</u> sites
<input type="checkbox"/> public-Federal	<input type="checkbox"/> structure	<u>10</u>	<u>6</u> structures
	<input type="checkbox"/> object		<u>6</u> objects
			<u>6</u> Total

Name of related multiple property listing:  
Osage Farms Resettlement Properties in Pettis County, Missouri

Number of contributing resources previously listed in the National Register 0

### 4. State/Federal Agency Certification

As the designated authority under the National Historic Preservation Act of 1966, as amended, I hereby certify that this  nomination  request for determination of eligibility meets the documentation standards for registering properties in the National Register of Historic Places and meets the procedural and professional requirements set forth in 36 CFR Part 60. In my opinion, the property  meets  does not meet the National Register criteria.  See continuation sheet.

Claire F. Blackwell 8 August 1991  
Signature of certifying official Claire F. Blackwell Date  
Deputy State Historic Preservation Officer, Department of Natural Resources  
State or Federal agency and bureau

In my opinion, the property  meets  does not meet the National Register criteria.  See continuation sheet.

\_\_\_\_\_  
Signature of commenting or other official Date  
\_\_\_\_\_  
State or Federal agency and bureau

### 5. National Park Service Certification

I, hereby, certify that this property is:

entered in the National Register.  
 See continuation sheet.

determined eligible for the National Register.  See continuation sheet.

determined not eligible for the National Register.

removed from the National Register.

other, (explain:) \_\_\_\_\_

Signature of the Keeper

Date of Action

## 6. Function or Use

Historic Functions (enter categories from instructions)

Domestic/Single Dwelling

Agriculture/Subsistence/Animal Facility

Agriculture/Subsistence/Storage

Agriculture/Subsistence/Agricultural Outbuilding

Agriculture/Subsistence/Processing

Current Functions (enter categories from instructions)

Domestic/Single Dwelling

Agriculture/Subsistence/Animal Facility

Agriculture/Subsistence/Storage

Agriculture/Subsistence/Storage

Vacant/Not in Use

## 7. Description

Architectural Classification

(enter categories from instructions)

Other: Resettlement Administration Architecture

Other: Side-Passage Barn

Other: Poultry House

Other: Granary

Materials (enter categories from instructions)

foundation Concrete

walls Wood

Concrete

roof Metal

other Ceramic tile

Describe present and historic physical appearance.

The Hillview Cooperative Dairy Farm Historic District contains the nucleus properties of two experimental cooperative farms established by the federal government in northern Pettis County, Missouri.\* Located on the west side of Missouri Highway T near Hill View Road, the government properties were constructed in 1937 by the Resettlement Administration/Farm Security Administration in response to the depressed farm economy inherited by the Roosevelt Administration. The ten contributing properties (a large dairy barn with a milking wing, two silos, two poultry houses, a granary, a reconditioned horse barn, two dwelling, and a well house) sit on their original foundations within a setting highly evocative of their period of significance when Depression-stricken Missourians farmed together under a collective, government-supervised system (see "Osage Farms Resettlement Properties in Pettis County, Missouri: Government Outbuildings: Cooperative Farm Centers and Outlying Cooperative Farmsteads").

The Hillview properties are within a rectangular district of approximately seven acres near the center of Section 29, approximately 3½ miles west of Hughesville. The surrounding acreage is still farmland, most of it unbroken by new construction. Hillview was in the extreme southwestern part of the 8,000-plus acres Osage Farms resettlement community. Today the variety of government-built properties is greater at Hillview than at any other site within the project area.

Keyed to the site map, the properties are as follows:

A. Type 4110:8 Government Poultry House. The northernmost of two Type 4110:8 government poultry houses constructed at Hillview, this contributing example appears to have a relatively intact exterior with the exception of some altered window openings. Interior trappings designed to accommodate 500 chickens have been replaced with sow pens. Its present usage is as a hog shelter. (See Photo #1.)

B. Type 4110:8 Government Poultry House. Probably similar originally to the previously described poultry house, this contributing example has two sliding doors instead of only one (as above) in its main facade but the existing windows appear to be unaltered. Facilities for poultry have been removed and the building is primarily used for storage. Both poultry houses have corrugated steel roofing, which may or may not be original. (See Photos #2, 8 and 21.)

C. Scale House. This is a rectangular, pole-frame building with corrugated metal sides and a gable roof. Although probably not a government building, it is not really disruptive. Noncontributing. (See Photo #3.)

\* Bois d' Arc, the other cooperative farm at Osage Farms,  See continuation sheet was in the eastern portion of the project and is also nominated.

**8. Statement of Significance**

Certifying official has considered the significance of this property in relation to other properties:

nationally     statewide     locally

Applicable National Register Criteria     A     B     C     D

Criteria Considerations (Exceptions)     A     B     C     D     E     F     G

Areas of Significance (enter categories from instructions)

Social History  
Agriculture  
Architecture

Period of Significance

1937-43

Significant Dates

1937

Cultural Affiliation

N/A

Significant Person

N/A

Architect/Builder

Resettlement Administration; Farm Security Administration

State significance of property, and justify criteria, criteria considerations, and areas and periods of significance noted above.

The Hillview Cooperative Dairy Farm Historic District, Missouri Highway T and Hillview Road, is significant under Criteria A and C in the areas of Social History, Agriculture and Architecture. The district is a cohesive grouping of properties primarily constructed in 1937 under a New Deal program to relocate and rehabilitate Depression-stricken Missourians, most of whom were farmers (see "Osage Farms Resettlement Properties in Pettis County, Missouri"). Hillview was the nucleus of a collective dairy farm (one of two at Osage Farms), in effect a local laboratory for the Resettlement Administration/Farm Security Administration's experiments in collectivized agriculture. Because the properties were constructed by the RA/FSA, they are representative of government architecture during the 1930s, and the dwellings are thought to have influenced economical postwar designs. Contributing properties include the largest single building at Osage Farms (a three-winged dairy barn/milking complex), two government poultry houses of a type constructed only at the dairy centers, a reconditioned horse barn, a granary, two government farmhouses where tenant families lived and a wellhouse. The project's only extant government silo and a reconditioned silo are also part of the main barn complex at Hillview.

Social History

The utopian zeal which led to the creation of Osage Farms and other resettlement projects throughout the nation was intended to promote the welfare of society in general and of the economically needy in particular. Scores of down-and-out farm families were resettled at Osage Farms as the Roosevelt administration, which conceived the resettlement program, sought to resolve the agrarian crisis. Hillview was one of two large dairy farms operated collectively on the local project. All were Missourians, but some families--such as those who came from the Ozark Mountains where the national forest system was being developed--were from somewhat different cultural groups. The resettlement of families from other areas of the state undoubtedly had an impact on the cultural makeup of northern Pettis County. In some cases, resettled families remained in the area and perhaps purchased a government farm near the cooperative when the project disbanded. Ultimately, because the collective nature of many resettlement projects were perceived as against the American grain, criticism intensified and Congress dismantled the increasingly controversial program in 1943.5

**9. Major Bibliographical References**

For complete bibliographical information, see "Osage Farms Resettlement Properties in Pettis County, Missouri."

See continuation sheet

Previous documentation on file (NPS):

- preliminary determination of individual listing (36 CFR 67) has been requested
- previously listed in the National Register
- previously determined eligible by the National Register
- designated a National Historic Landmark
- recorded by Historic American Buildings Survey # \_\_\_\_\_
- recorded by Historic American Engineering Record # \_\_\_\_\_

Primary location of additional data:

- State historic preservation office
- Other State agency
- Federal agency (National Archives)
- Local government
- University
- Other

Specify repository: Other: Show-Me Regional Planning Commission

**10. Geographical Data**

Acreage of property Approximately eight acres

UTM References

A 15 46,819,20 4,29,75,6,0  
 Zone Easting Northing

B           
 Zone Easting Northing

C         

D         

See continuation sheet

Verbal Boundary Description (References to points refer to the attached site map)

Beginning at a point 155' south and 2,025' west of the center of the entrance road at State Highway T (Point A on site map), proceed west 775' to Point B. Then proceed north 405' to Point C. Then proceed east 775' to Point D. Then proceed south 405' to the point of origin.

See continuation sheet

Boundary Justification

Boundaries of the Hillview Historic District encompass all extant properties of the original dairy nucleus.

See continuation sheet

**11. Form Prepared By**

name/title Roger Maserang/Historian  
 organization Show-Me Regional Planning Commission date August 31, 1990  
 street & number 113 N. Holden St.; P.O. Box 348 telephone 816-747-2294  
 city or town Warrensburg state Missouri zip code 64093



United States Department of the Interior  
National Park ServiceNational Register of Historic Places  
Continuation SheetSection number 7 Page 1 Hillview Cooperative Dairy Farm Historic District

D. Reconditioned Silo. This ca. 1920s tile block silo is a good example of a structure that was reconditioned by the RA/FSA and used on the project. According to a 1937 project map, this was the only reconditioned silo at Osage Farms. The cap has been removed and it is no longer used. Constructed before the ca. 1937 Type 411:2 barn, to which it is only semi-attached, it is counted as a contributing structure. (See Photos #3 and 5.)

E. Government Silo. At least four cement silos are believed to have been constructed at Osage Farms, but this is the only one standing. The cap is missing and it is no longer used. Because it is only semi-attached to the barn and because it is the only extant example of a government constructed silo, it is counted as a contributing structure. (See Photos #3 and 5.)

F. Type 411:2 Government Dairy Barn. The largest of the Osage Farms properties, the Type 411:2 government dairy barn (shaped like the letter Z with the center stroke straightened) is relatively unaltered. The lower barns are for beef cattle rather than for dairy cattle today, however, and the milking wing serves as a workshop. The old sterilization and chill rooms are used for storage. The loft is still used for hay storage. The feed bunk along a central row of posts is original but a hay manger along the south wall is recent. Cattle stalls have been added at the south end of the milking wing. Several original windows have been replaced with four-light units and some window openings have been covered. A few sections of the flat metal roof with standing seams have been replaced with corrugated steel. Within the old milking wing, a trough in the concrete floor for cattle droppings is a reminder of the past. Contributing. (See Photos #3, 4, 5, 7, 17, 19, 20, 22, 23, 24, 25, 26, 27 and 28.)

G. Grain Bins. Three steel grain bins were erected in the 1970s-80s. While these structures are not out of place in an agricultural context, they are noncontributing. (See Photos #6 and 10.)

H. Granary. Composition siding was used to repair the deteriorated shiplap siding in both gables in the early 1980s. The corrugated metal roof may or may not be original. The building is used as a granary today and is counted as a contributing structure. (See photos #6, 10, 29 and 30.)

I. Reconditioned Horse Barn/Granary. This ca. 1920s metal-sheathed building was apparently part of the Shy-Mitchell Farm when it was purchased by the government for the resettlement community. It is probably the "remodeled barn" listed for the Hillview site on the FSA's project map. Reconditioned properties are eligible under Criterion A, for their association with Osage Farms. Although this building was converted from a horse barn to a granary (its present use) in the early 1960s, its exterior appearance during the project has not been greatly changed. Contributing. (See Photos #9, 13, 17 and 19.)

J. Mobile Home. Modern, noncontributing. (See Photos #13 and 19.)

United States Department of the Interior  
National Park Service

National Register of Historic Places  
Continuation Sheet

Section number 7 Page 2 Hillview Cooperative Dairy Farm Historic District

K. Type 315:11 Government Farmhouse. This is a good example of the most common type of government farmhouse, although close inspection will reveal that vinyl siding covers the original clapboard. Since the significant form, features and detailing can be seen, this application of non-historic siding, as noted in the cover document, does not preclude listing. The concrete slab porch and a small wooden porch are not original. Only the Type 315:11 government farmhouse had a basement. Contributing. (See Photos #11, 12, 13, 15 and 19.)

L. Well House. This 7' x 9' cinder block well house enclosed a well with a pressure system that provided water for barns and dwellings at Hillview. The well and pressure system are new but the building is probably unaltered, unless the roof has been changed. Its dimensions are similar to those of the government food storage building but it has a concrete slab topping instead of a gable roof. Contributing. (See Photos #13 and 14.)

M. Mobile Home. Modern, noncontributing. (See Photos #13 and 14.)

N. Type 315:12 Government Farmhouse. Vinyl siding has been installed, but this is an otherwise impressive Type 315:12 farmhouse. Properties with non-historic siding may be listed when, as in this case, the original form, features and detailing are intact. Both entrances are in gable ends. One 6/6 window has been replaced with a modern window in the main facade. This very postwar-looking house is contributing. (See Photos #13, 14, 15, 16 and 18.)

Most resources at Hillview are relatively intact examples of types built or reconditioned by the RA/FSA. The massive dairy barn is the centerpiece and the largest, most impressive of all project buildings. The dairy center has lost a machinery building, seven dwellings and all of the privies but the principal outbuildings which define the character of the center are extant. The two remaining dwellings represent the only two types of government farmhouse built at Hillview. The scale house, grain bins and mobile homes are noncontributing but only the mobile homes--provided for the work crew--seem out of place within the district boundaries. Collectively, the properties--linked by their architecture, materials, workmanship, style and location--are evocative of their past as the dairy nucleus of a government cooperative at Osage Farms. The mood is enhanced because much of the surrounding countryside is still open terrain, much as it was during the 1937-43 period of activity.

Additional Description

On March 10, 1937, the Resettlement Administration purchased the Shy-Mitchell Farm which became the site of the Hillview dairy center from Paul S. and Anna Read. The purchase price for the 591.63 acre tract was \$29,000.<sup>1</sup> During the summer and fall of 1937, new buildings were erected and an existing silo and barn were reconditioned for use on the project. Families were moved into the nine government farmhouses, all of which were occupied by March 1938.<sup>2</sup> Sid Johnson was hired as manager, a board of directors was elected, and the cooperative was incorporated. Outlying farmsteads also participated in the collectivized operation, and Hillview eventually encompassed 2,630 acres.<sup>3</sup> When Congress abolished the resettlement program in 1943, the buildings were offered for sale. On February 27, 1946, the government sold the original 591.63 acre tract containing the dairy center to Charles T. and Marion M. Thompson. The Thompsons paid \$60,750.<sup>4</sup>

United States Department of the Interior  
National Park ServiceNational Register of Historic Places  
Continuation SheetSection number 8 Page 1 Hillview Cooperative Dairy Farm Historic DistrictAgriculture

The program of farming varied from region to region, but it was through the production and sale of dairy products that Hillview settlers earned their livelihood while at Osage Farms. At the dairy center, nine families lived in government dwellings and worked in the barns and other outbuildings.<sup>6</sup> In 1940, the Hillview dairy herd consisted of 118 registered jerseys. Both the Hillview and Bois d' Arc herds were top milk producers in Pettis County,<sup>7</sup> and both dairy farms were operated collectively, under sponsorship of the federal government. Cooperative or collective farming was the most controversial aspect of resettlement, in that it was clearly a break with tradition in a land where individualism reigned. The government owned the land and buildings and members of the cooperative owned the machinery, livestock and crops. Proceeds from the sale of milk, livestock, eggs, grain and other farm products went into a common fund; checks were made payable to Hillview, Inc. Although profits were slow in coming (the average Hillview farmer's net worth fell from zero at the time of settlement to minus \$914 at the end of 1940),<sup>8</sup> the last three years were much better.<sup>9</sup> In addition to the cooperative arrangement, other forms of experimentation at Hillview included the artificial insemination of dairy cows.<sup>10</sup> The land which had been overfarmed prior to its acquisition by the government was terraced to control erosion and restored to health through proper crop rotation.

Architecture

The Hillview Cooperative Dairy Farm Historic District is architecturally significant because the properties exemplify government resettlement architecture of the 1930s. At Hillview, the solid but frugal government designs can be seen in four outbuildings which are unlike any other extant outbuildings at Osage Farms, as well as in two government farmhouses. Hillview's massive dairy barn was unique on the project, with a traditional appearance along the lines of the Wisconsin dairy barn.<sup>11</sup> With cinder block walls for the ground floor and the economical use of lumber throughout, it is clearly a modern farm building under its familiar gambrel roof with hay hoods. Dwellings at Hillview are entirely functional, their austere designs a far cry from the rural housing that predominated prior to World War Two. Paul K. Conkin suggests that rural home design was influenced by the utilitarian government architecture.<sup>12</sup> Resettlement architecture preceded "wartime" housing which it resembles. At Hillview, the government properties are all relatively intact examples and the reconditioned properties (one silo and the converted horse barn) provide added depth.

The Hillview Cooperative Dairy Farm Historic District is eligible for listing under Criteria A and C with significance in the areas of Social History, Agriculture and Architecture. Most resources within the district are relatively intact examples of types built by the RA/FSA for the project. The Type 411:2 government barn is unique at Osage Farms, and the barn complex includes the only surviving government

United States Department of the Interior  
National Park ServiceNational Register of Historic Places  
Continuation SheetSection number 8 Page 2 Hillview Cooperative Dairy Farm Historic District

silo and the only reconditioned silo on the project. The only surviving Type 4110:8 poultry houses are at Hillview, and both are reasonably intact. Hillview also has what appears to be a government-built granary and a government-reconditioned horse barn which has been converted to a granary but still contributes. Two government farmhouses (Type 315:11 and Type 315:12) were covered with vinyl siding within the past three years but otherwise have relatively unaltered exteriors. The main non-contributing properties are two house trailers for the farmhands and a group of three large metal grain bins. Overall, ambiance is good and the Hillview resources remain evocative of their historic period. Much of the surrounding farmland also retains its historic appearance, including the 391-acre tract originally purchased by the government for Hillview.

Endnotes

- <sup>1</sup> Deed Records. Pettis County Courthouse, Sedalia, Missouri.
- <sup>2</sup> The Sedalia Democrat, March 4, 1938.
- <sup>3</sup> The Kansas City Star, December 11, 1943.
- <sup>4</sup> Deed Records. Pettis County Courthouse, Sedalia, Missouri.
- <sup>5</sup> Liquidation of Osage Farms was announced in August 1943, but the government was unable to dispose of its unsold real estate immediately. Hillview and Bois d' Arc were offered to their corporations, but there was insufficient interest and both cooperative farms were disbanded. In February 1946, the government sold the Hillview dairy nucleus to a private buyer. The dairy nucleus is presently owned by three partners, one of whom is the farm manager, William Lemons.
- <sup>6</sup> The Sedalia Democrat, March 4, 1938.
- <sup>7</sup> The Sedalia Democrat, June 24 and September 30, 1938; November 20, 1942.
- <sup>8</sup> Clawson, Marion. "Resettlement Experience on Nine Selected Resettlement Projects," Agricultural History, January 1978, pp. 18-19. (Clawson's article was written in 1943 for the Bureau of Agricultural Economics, but unpublished until 1978.)

United States Department of the Interior  
National Park Service

## National Register of Historic Places Continuation Sheet

Section number 8 Page 3 Hillview Cooperative Dairy Farm Historic District

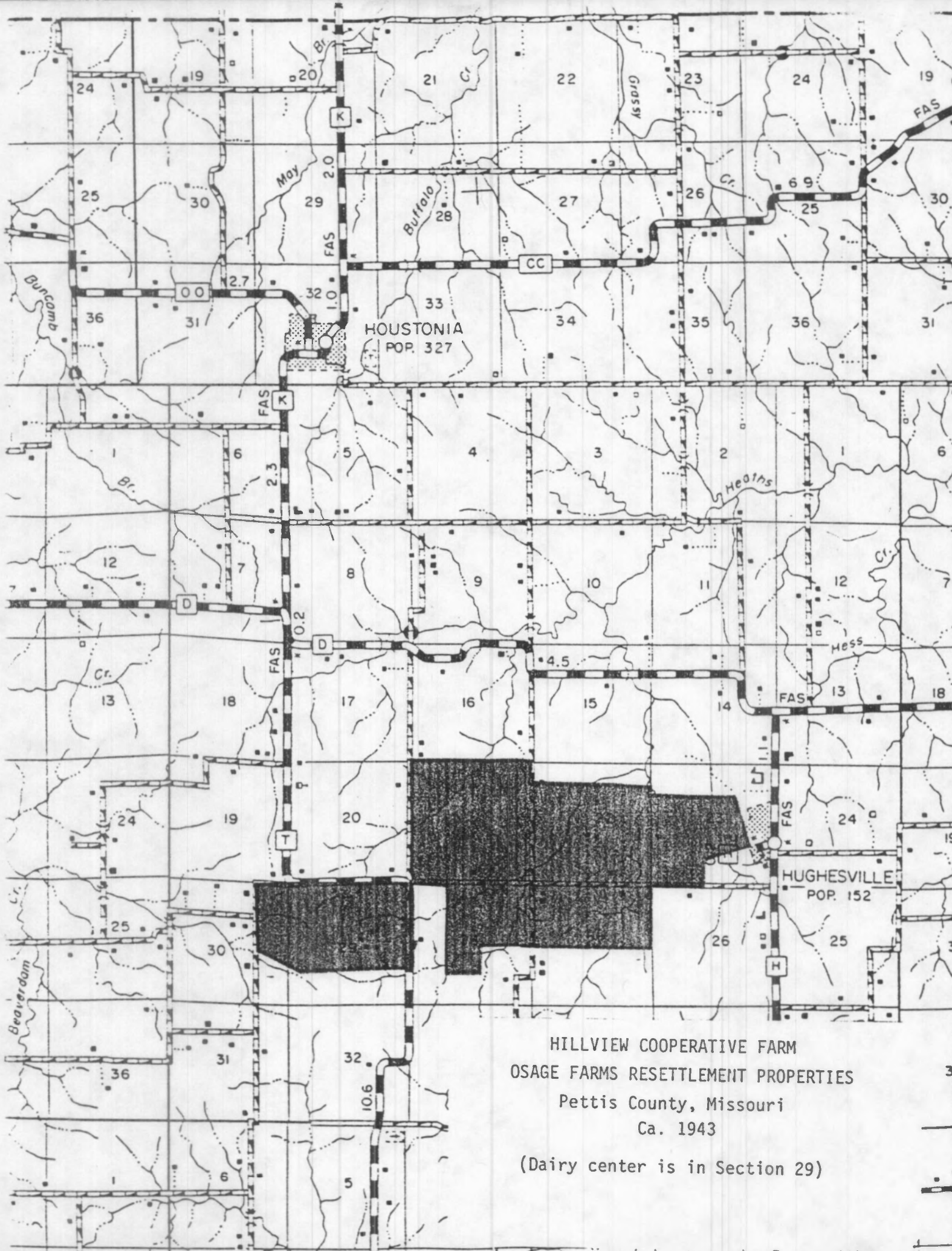
---

<sup>9</sup>The Sedalia Democrat, September 13, 1981.

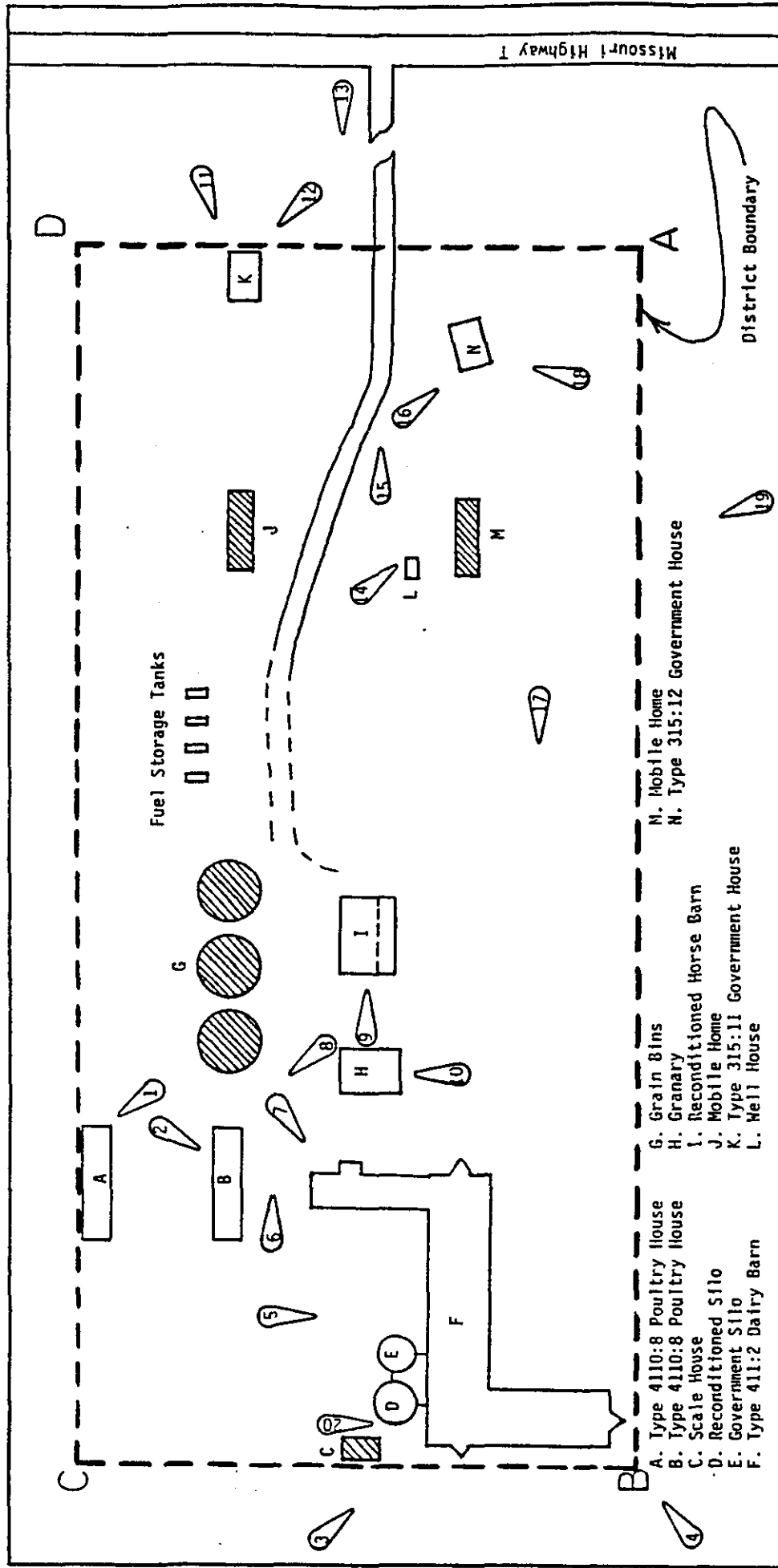
<sup>10</sup>Clawson, op cit., p. 26.

<sup>11</sup>Noble, Allen G. Wood, Brick and Stone: The North American Settlement Landscape, Volume 2: Barns and Farm Structures. Amherst, The University of Massachusetts Press, 1984, pp. 45-46.

<sup>12</sup>Conkin, Paul K. Tomorrow a New World: The New Deal Community Program. New York: Cornell University Press, 1959, pp. 332-337.



HILLVIEW COOPERATIVE FARM  
 OSAGE FARMS RESETTLEMENT PROPERTIES  
 Pettis County, Missouri  
 Ca. 1943  
 (Dairy center is in Section 29)

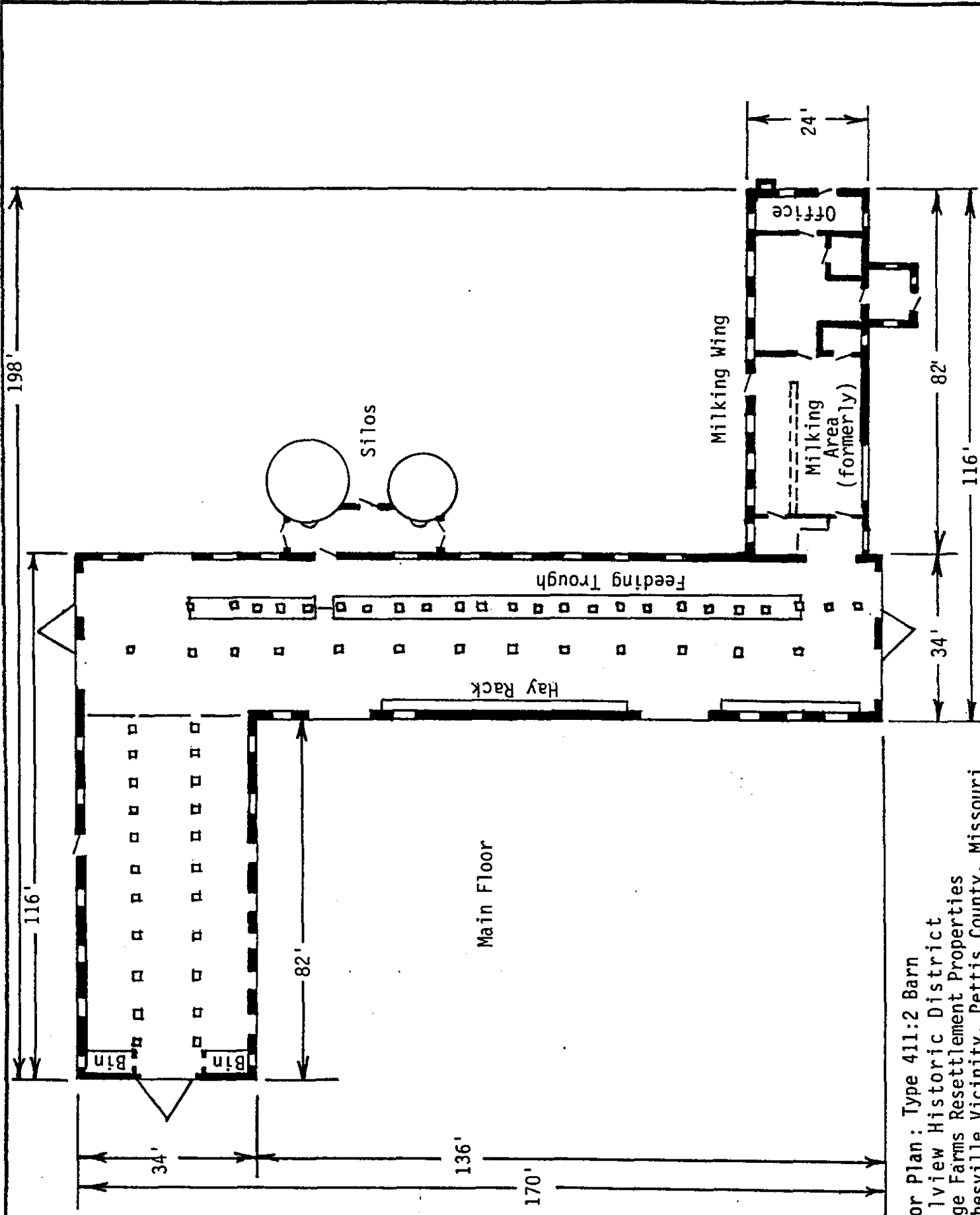


Site Map: Osage Farms Resettlement Properties



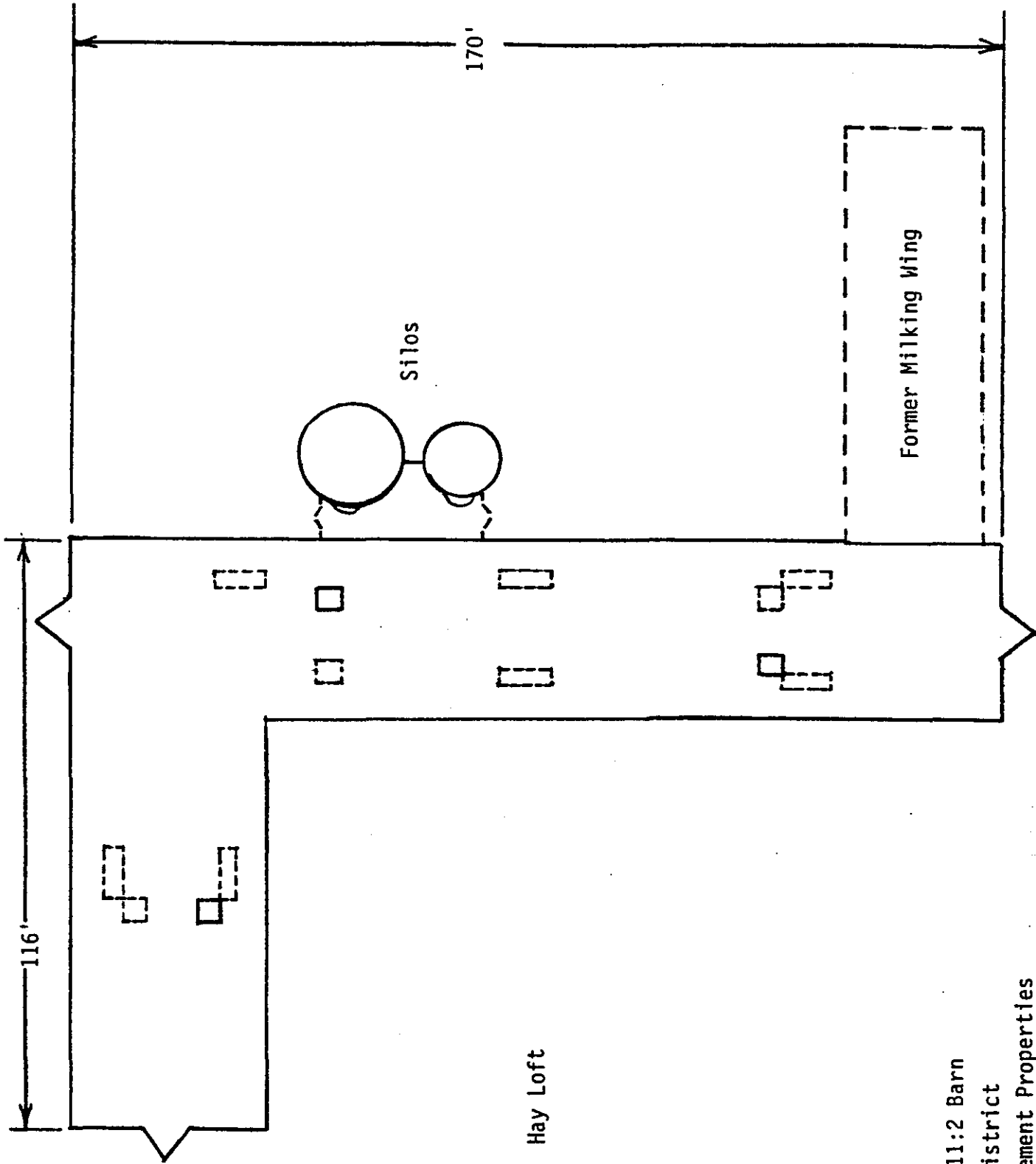
Not to Scale

HILLVIEW COOPERATIVE DAIRY FARM HISTORIC DISTRICT  
 HUGHESVILLE VICINITY, PETTIS COUNTY, MISSOURI



Floor Plan: Type 411:2 Barn  
 Hillview Historic District  
 Osage Farms Resettlement Properties  
 Hughesville Vicinity, Pettis County, Missouri



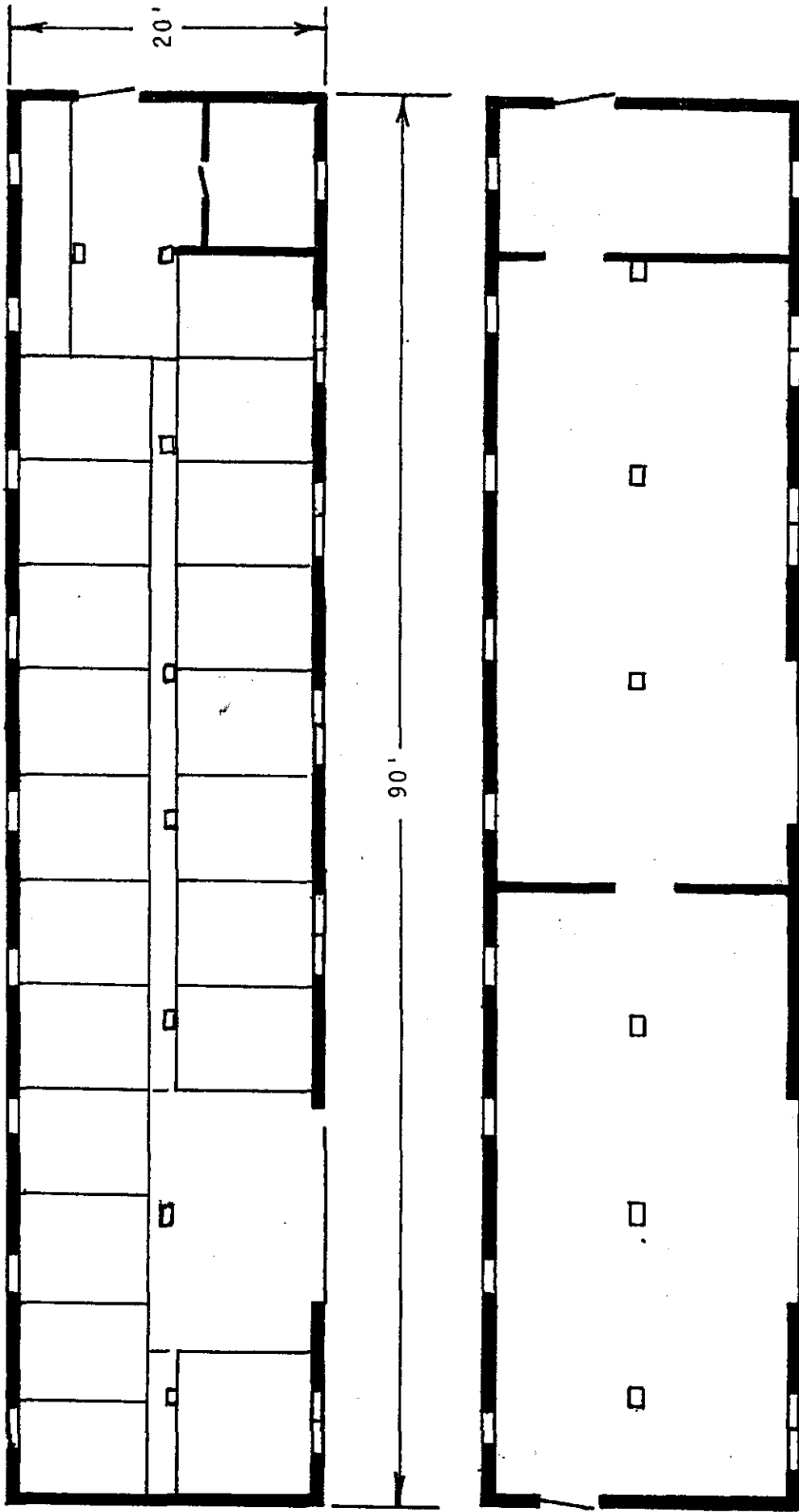


Silos

Former Milking Wing

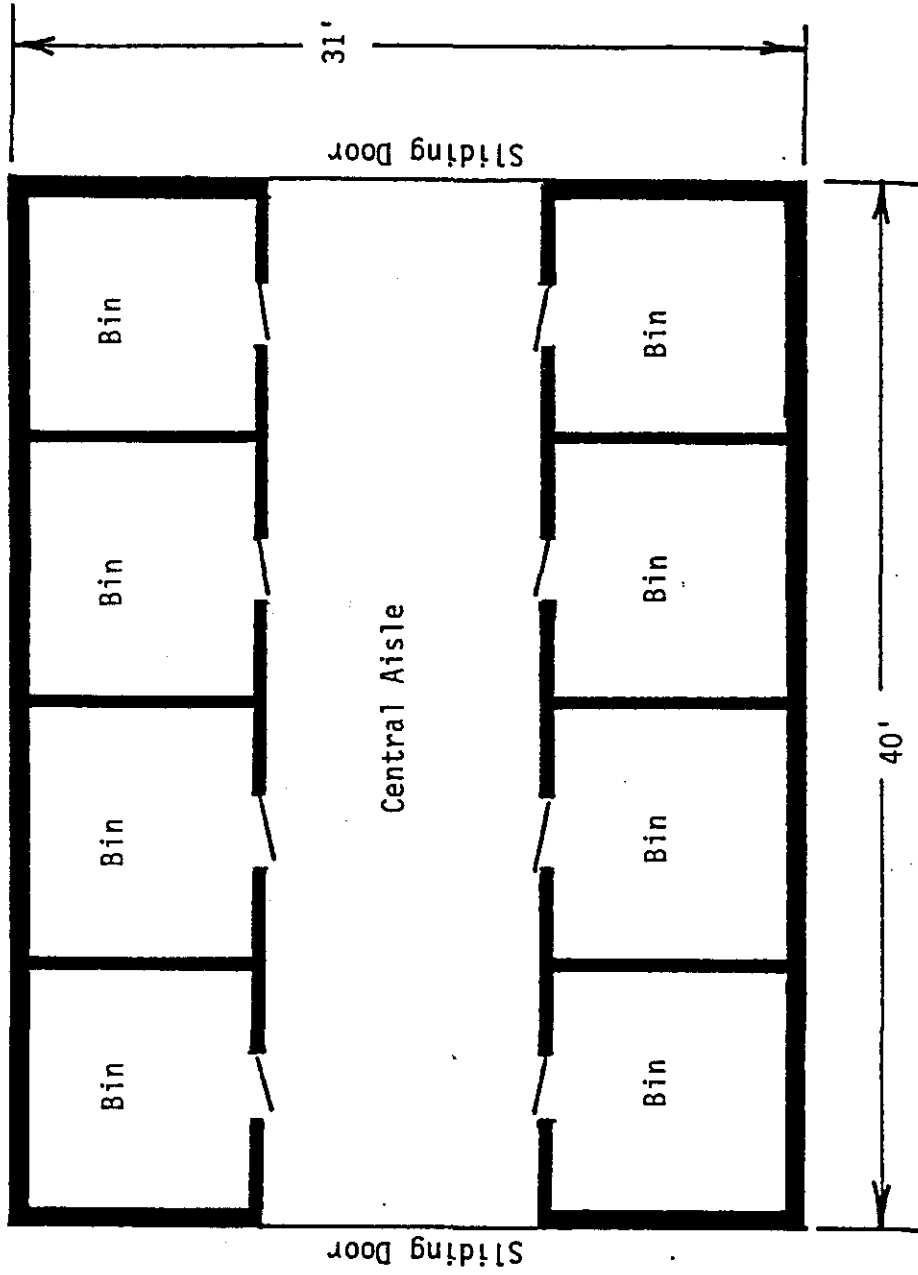
Hay Loft

Floor Plan: Type 411:2 Barn  
 Hillview Historic District  
 Osage Farms Resettlement Properties  
 Hughesville Vicinity, Pettis County, Missouri

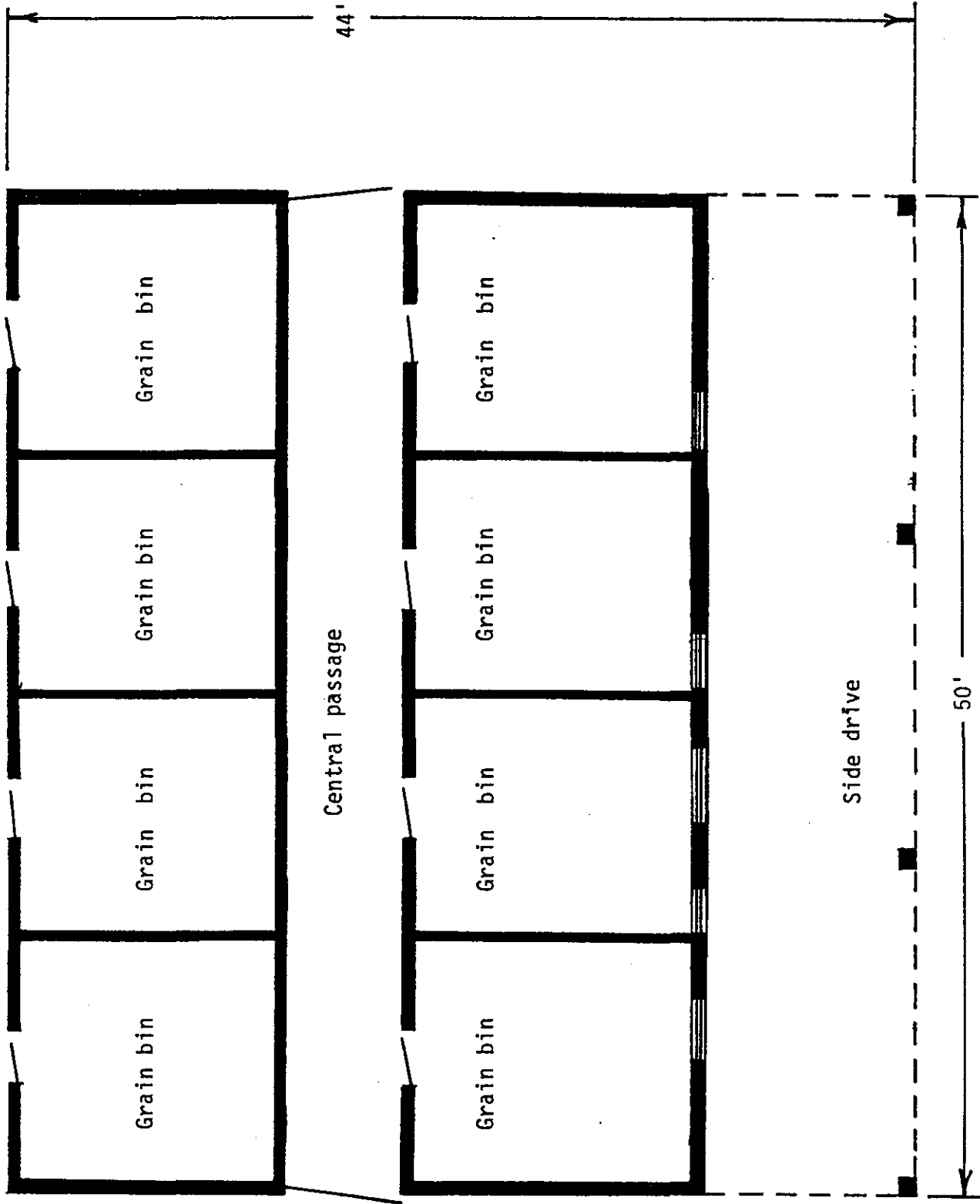


Top: "A" on Site Map  
 Bottom: "B" on Site Map

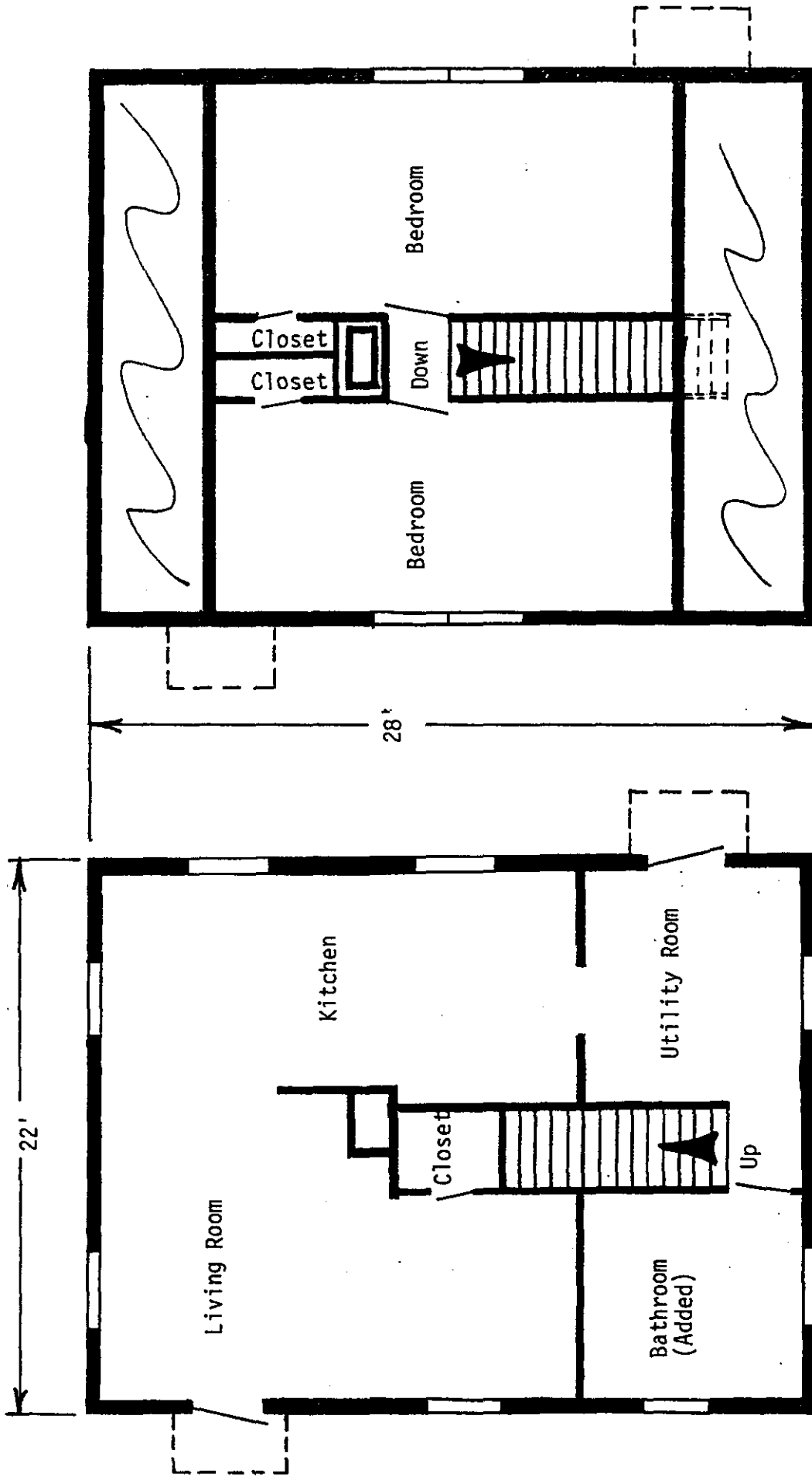
Floor Plan: Type 4110:8 Poultry House  
 Hillview Historic District  
 Osage Farms Resettlement Properties  
 Hughesville vicinity, Pettis County, Missouri



Floor Plan: Granary  
 Hillview Historic District  
 Osage Farms Resettlement Properties  
 Hughesville vicinity, Pettis County, Missouri



Floor Plan: Remodeled Horse Barn/Granary  
 Hillview Historic District  
 Osage Farms Resettlement Project  
 Hughesville Vicinity, Pettis County, Missouri

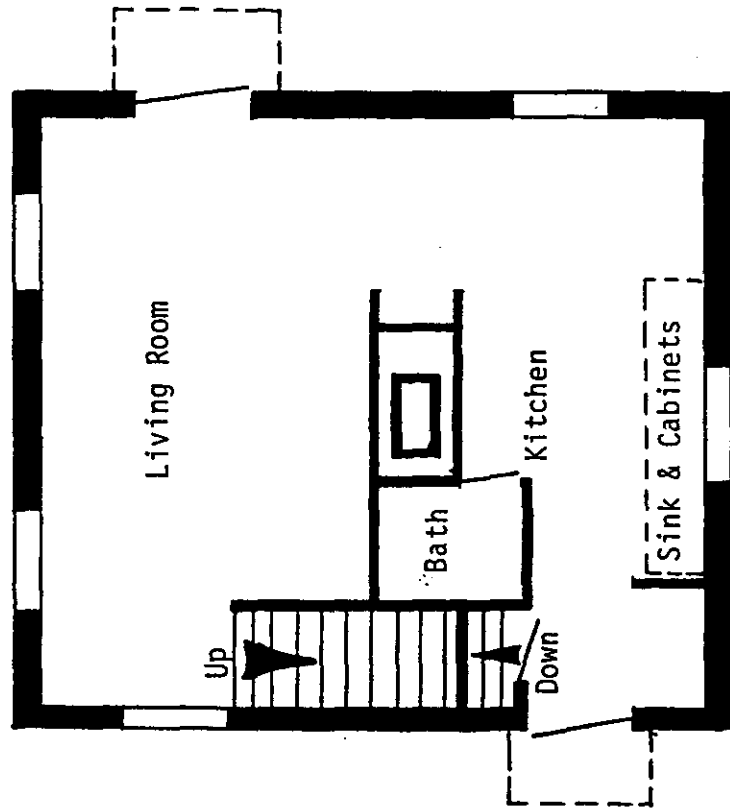


Second Floor

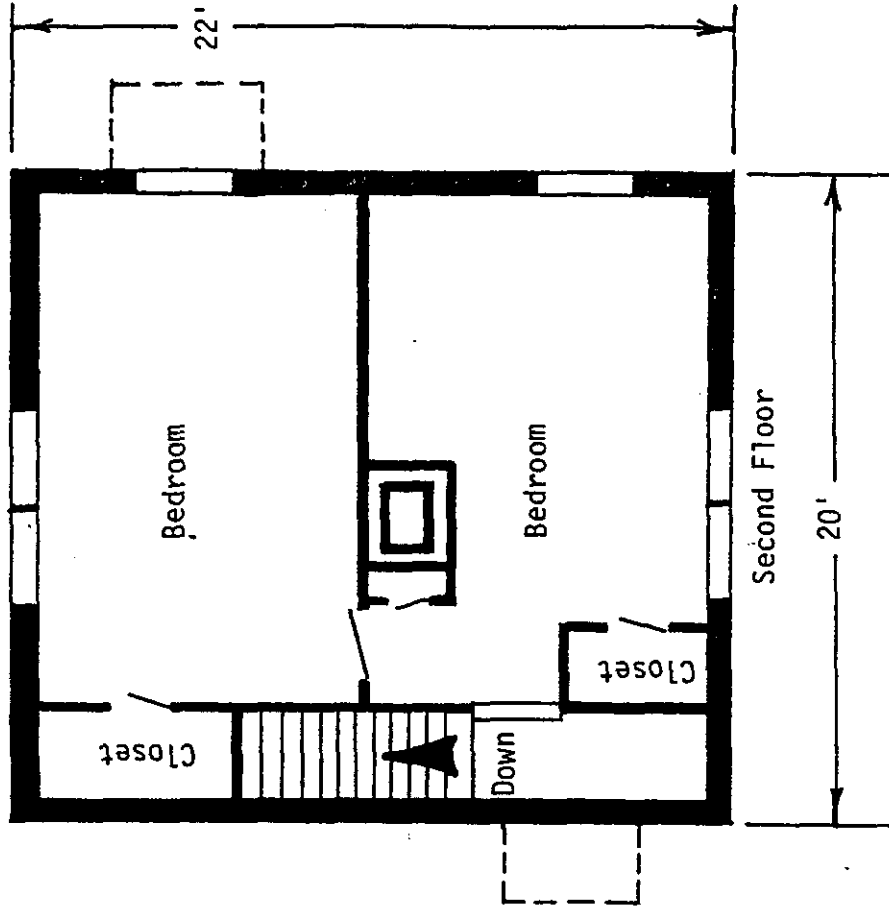
(See Multiple Property Documentation Form for floor plan of unaltered Type 315:12 House)

Main Floor

Floor Plan: Type 315:12 Government Farmhouse  
 Hillview Historic District  
 Osage Farms Resettlement Properties  
 Hughesville Vicinity, Pettis County, Missouri



Main Floor



Second Floor

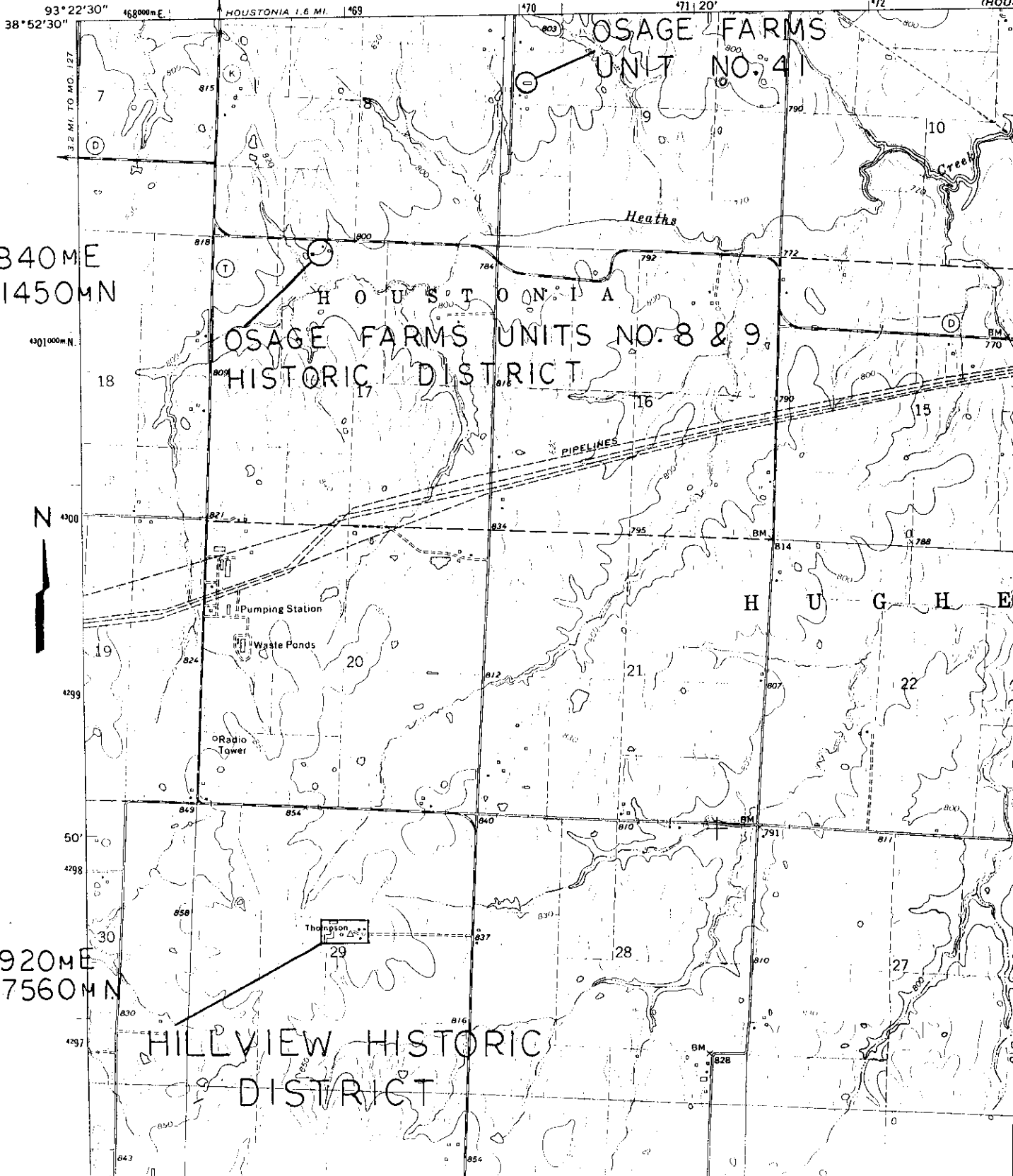
Floor Plan: Type 315:11 Government Farmhouse  
 Hillview Historic District  
 Osage Farms Resettlement Project  
 Hughesville vicinity, Pettis County, Missouri

(See Multiple Property Documentation  
 Form for Floor plan of unaltered Type  
 315:11 House)

289 IV NW NW  
(SWEET SPRINGS)

UNITED STATES  
DEPARTMENT OF THE INTERIOR  
GEOLOGICAL SURVEY

15/470040ME  
15/4302360MN



15/468840ME  
15/4301450MN

15/468920ME  
15/4297560MN

United States Department of the Interior  
National Park Service

# National Register of Historic Places Continuation Sheet

Section number \_\_\_\_\_ Page \_\_\_\_\_

### SUPPLEMENTARY LISTING RECORD

NRIS Reference Number: 91001399

Date Listed: 9/27/91

Hillview Cooperative Dairy Farm Hist. Dist., Pettis Co.	MO
Property Name	County State

Osage Farms Resettlement Properties in Pettis County MPS  
Multiple Name

-----  
 This property is listed in the National Register of Historic Places in accordance with the attached nomination documentation subject to the following exceptions, exclusions, or amendments, notwithstanding the National Park Service certification included in the nomination documentation.

Pete Boland  
Signature of the Keeper

9/27/91  
Date of Action

=====  
**Amended Items in Nomination:**

There is a discrepancy between the acreage cited in the description (Section 7) and the geographical summary (Section 10). The correct acreage is eight, as stated in Section 10.

This information was provided by Steve Mitchell of the Missouri SHPO.

**DISTRIBUTION:**

- National Register property file
- Nominating Authority (without nomination attachment)



HILLVIEW HISTORIC DISTRICT

HUGHESVILLE, MO., VICINITY

R. MASERANG

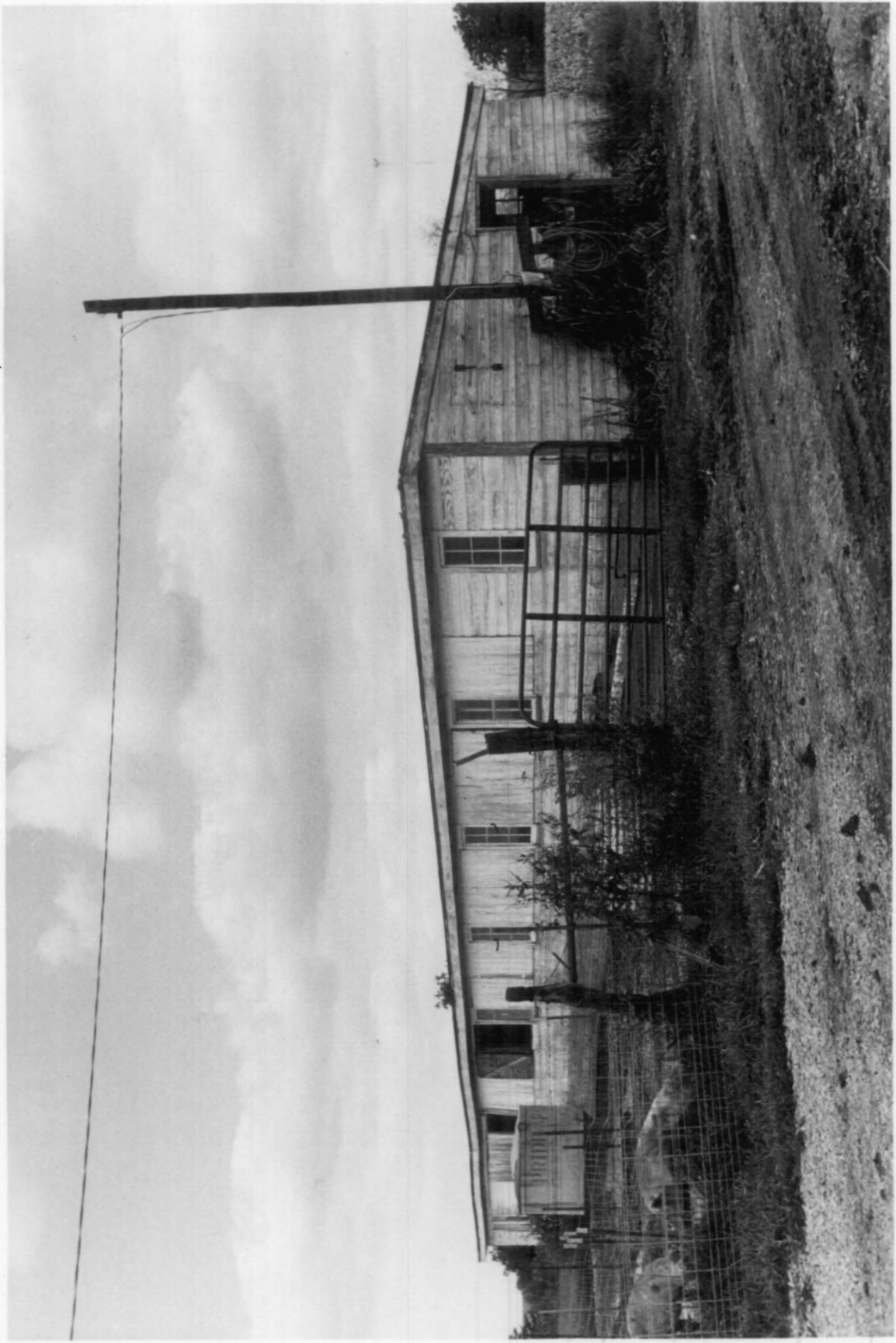
9/89

SHOW-ME RPC

SOUTH & EAST

#1

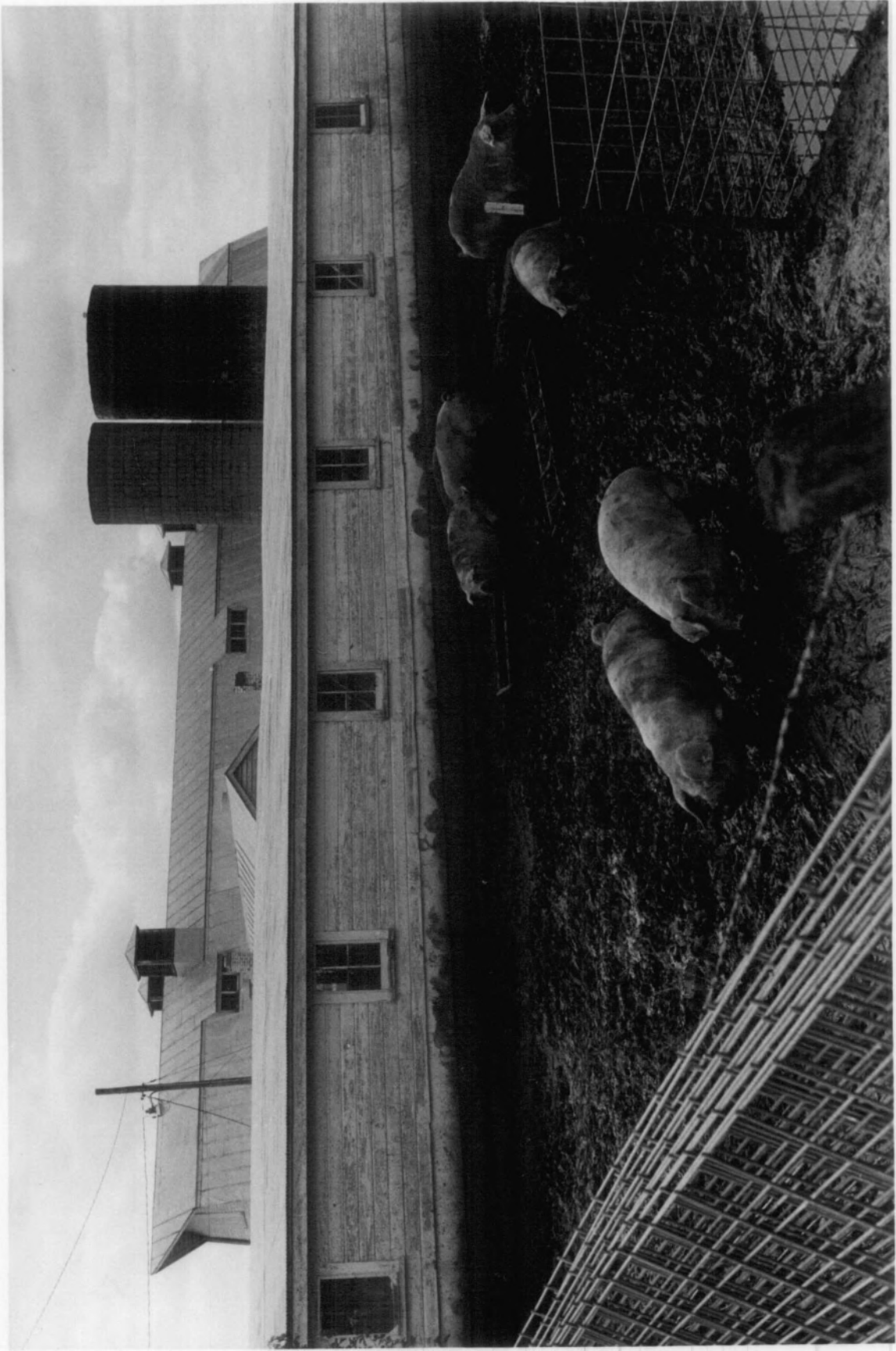
FACADES (FACING NW), FORMER POULTRY  
HOUSE



HILLVIEW HIST. DIST.  
HUGHESVILLE, MO., VICINITY  
R. MASERANG

9/89  
SHOW-ME RPC  
REAR FACADE, FORMER ADULTERY HOUSE,  
FACING SW

#2



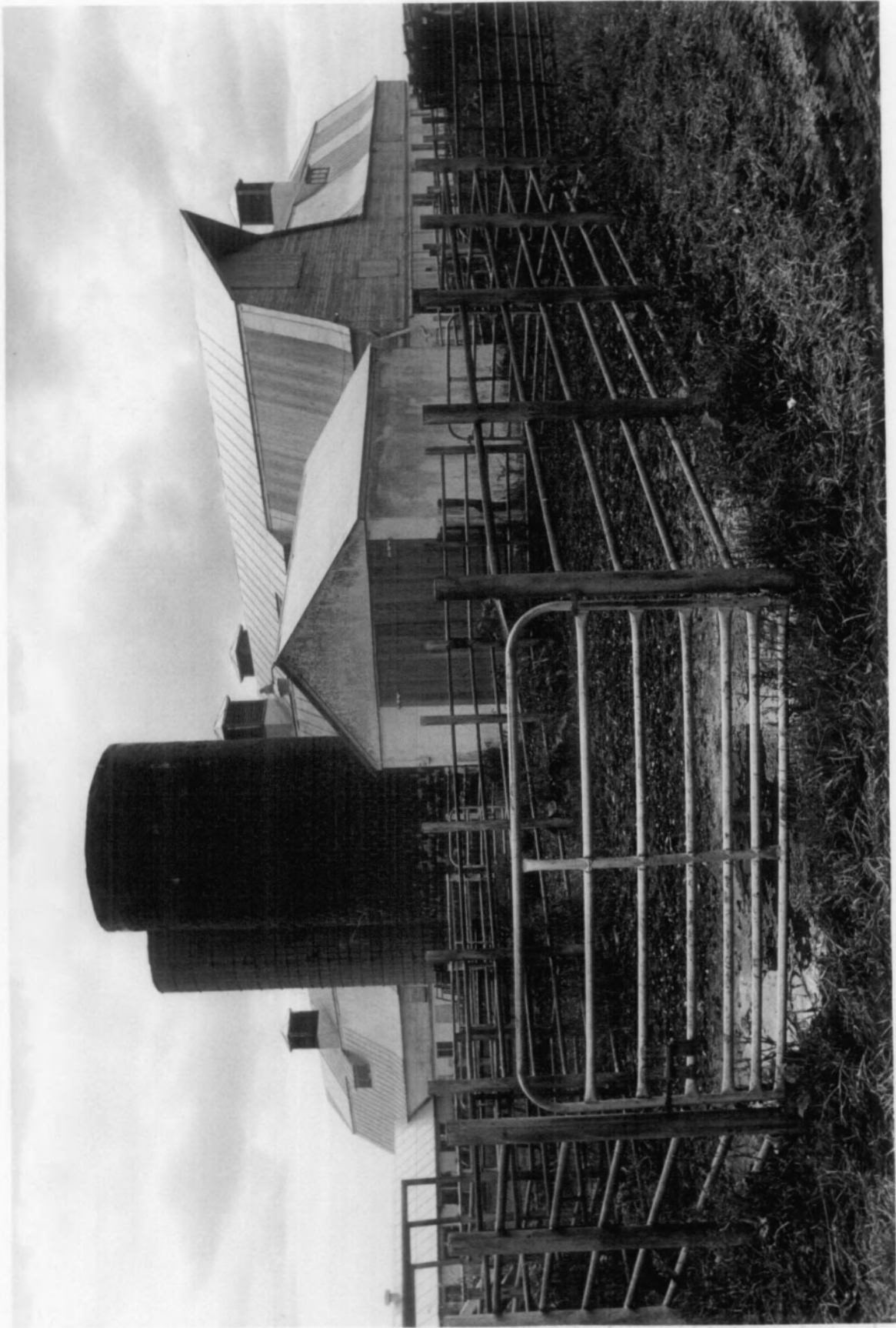
FORMER DAIRY BARNS, HILLVIEW HIST. DIST.  
HUGHESVILLE, MO.; VICINITY  
R. MASERANG

9/89

SHOW-ME RPC

NW END OF BARNS, SCALE HOUSE (NON-  
CONTRIB.) IN FOREGROUND (FACING SE)

# 3



HALLVIEW HIST. DIST.

HUGHESVILLE, MO., VICINITY

R. MASERANG

9/89

SHOW-ME RPC

W & S FACADES OF SMALLER WING, FORMER DAIRY BARN  
(FACING NE)

# 4







HILL VIEW HISTORIC DISTRICT

HUGHESVILLE, MO., VICINITY

R. MASERANG

12/89

SHOW-ME RPC

NORTH SIDE OF DAIRY BARN (FACING S)

#5



HILL VIEW HISTORIC DISTRICT

HUGHESVILLE, MO., VICINITY

R. MASERANG

9/89

SHOW-ME RPC

FACING EAST FROM END OF FORMER

MILKING WING

# 6



HILLVIEW HISTORIC DISTRICT

HUGHESVILLE, MO., VICINITY

R. MASERANG

9/89

SHOW-ME RPC

EAST & NORTH FACADES (FACING SW), FORMER DAIRY  
BARN MILKING WING

# 7





HILLVIEW HISTORIC DISTRICT

HUGHESVILLE, MO., VICINITY

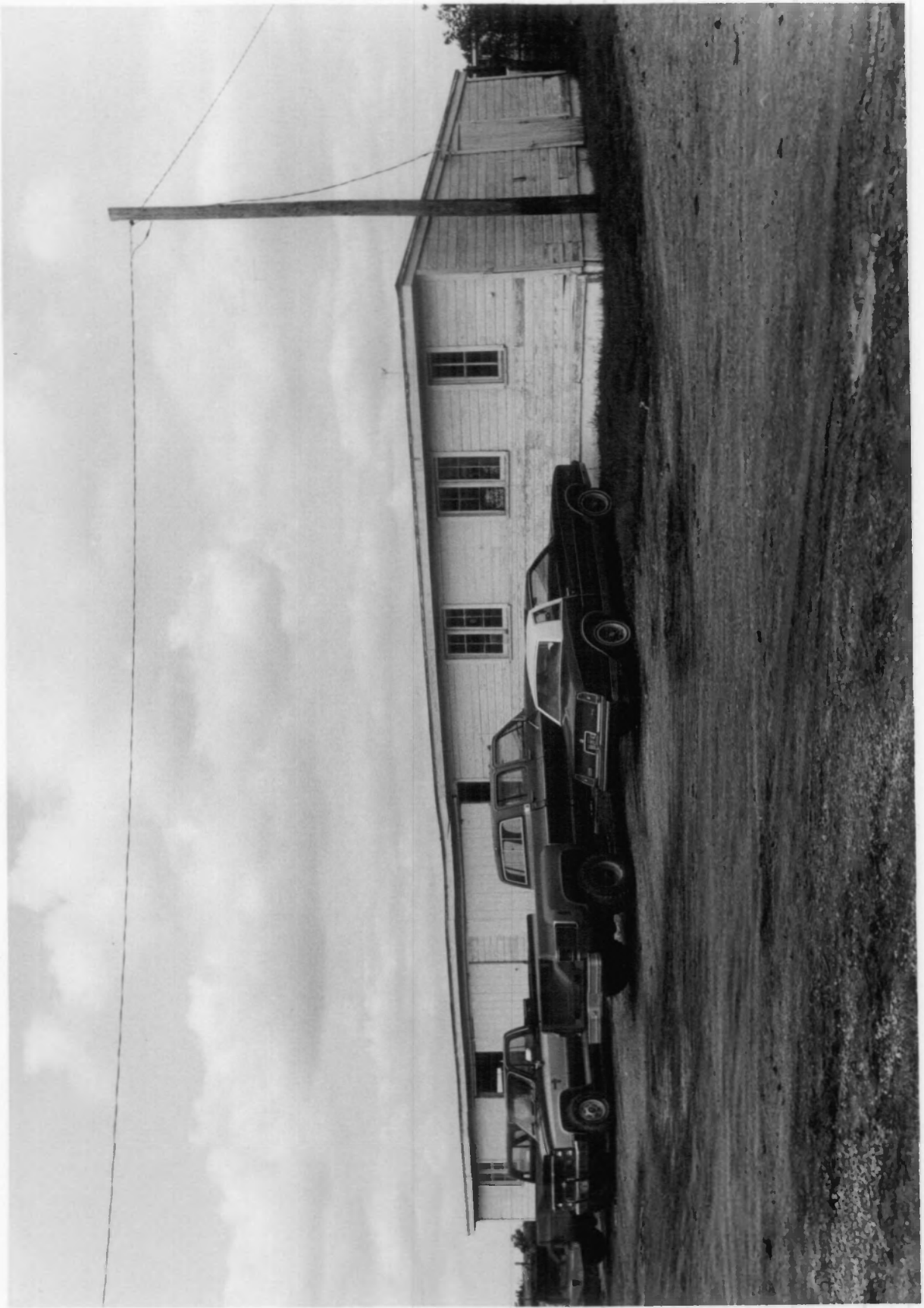
R. MASERANG

9/89

SHOW-ME RPC

FORMER TYPE 4/10:8 POULTRY HOUSE, FACING NW

#8

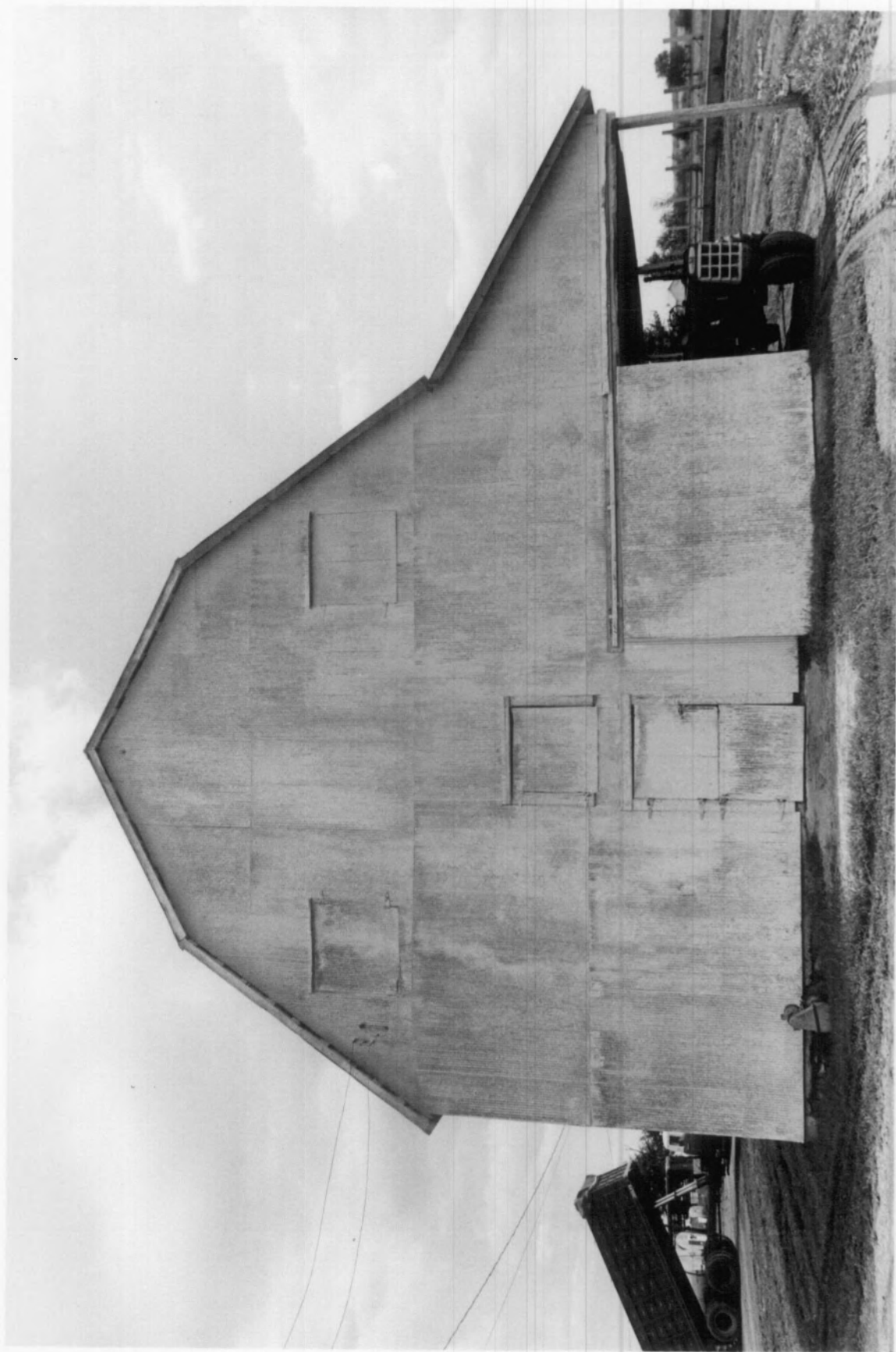




FORMER HORSE BARN, HILLVIEW, INC., HIST. DIST.  
HUGHESVILLE, MO., VICINITY  
R. MASERANG

9/89

SHOW-ME RAC  
WEST FACADE  
#9



HILLVIEW HIST. DIST.  
HUGHESVILLE, MO., VICINITY  
R. MASERANG

9/89

SHOW-ME RPC  
S. FACADE OF GRANARY

#10



HILLVIEW HIST. DIST.

HUGHESVILLE, MO., VICINITY  
R. MASERANG

9/89

SHOW-ME RPC

E & N FACADES, TYPE 3/5.11 TENANT HOUSE (FACING SW)

#11



HILLVILLE HIST. DIST.

HUGHESVILLE, MO., VICINITY

R. MASERANG

9/89

SHOW-ME RPC

S + E FACADES, FORMER 315-11 TENANT HOUSE (FACING  
NW)

# 12







HILLVIEW HISTORIC DISTRICT  
HUGHESVILLE, MO., VICINITY

R. MASERANG

12/89

SHOW-ME RPC  
FACING WEST INTO COMPLEX

#13



HULLVIEW HIST. DIST.  
HUGHESVILLE, MO., VICINITY  
R. MASERANG

12/89

SHOW-ME RAC

FORMER TENANT HOUSE, MOBILE HOME AND  
WELL HOUSE, FACING S

#14



HILLVIEW HIST. DIST.

HUGHESVILLE, MO., VICINITY

R. MASERANG

9/89

SHOW-ME RPC

ROAD INTO DAIRY COMPLEX, FACING E, WITH  
FORMER TENANT HOUSES

# 15



HILLVIEW HIST. DIST.  
HUGHESVILLE, MO., VICINITY

R. MASERANG

9/89

SHOW-ME RPC

N + W FACADES, TYPE 315:12 HOUSE

#16







HILLVIEW HISTORIC DIST.

HUGHESVILLE, MO., VICINITY

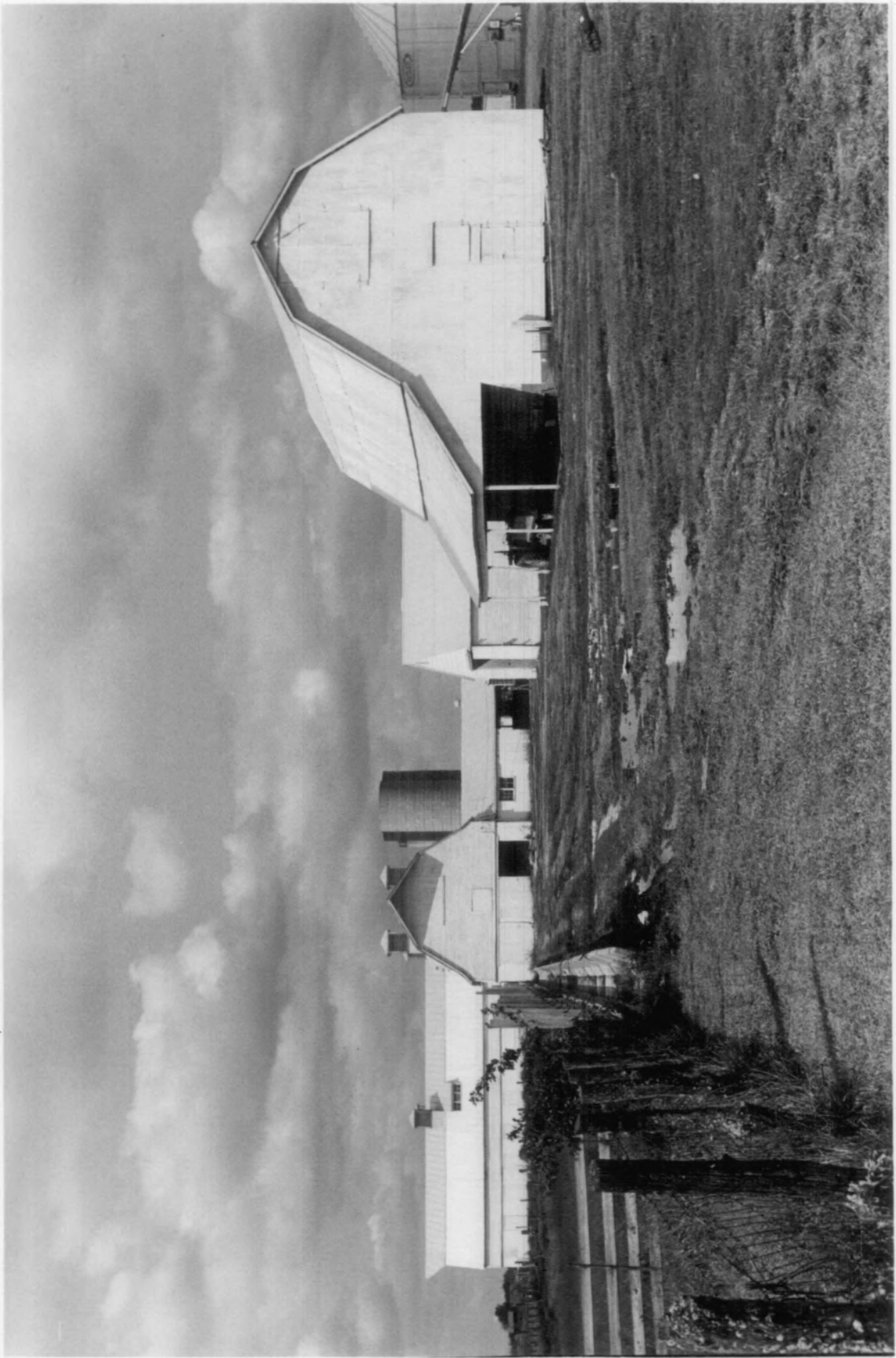
R. MASERANG

9/89

SHOW-ME RPC

GENERAL VIEW FACING WEST

#17



HILLVIEW HIST. DIST.  
HUGHESVILLE, MO., VICINITY  
R. MASERANG

9/89

SHOW-ME RPC

W X S FACADES, FORMER

TYPE 315:12 TENANT HOUSE

#18



HILLVIEW HTST. DIST.  
HUGHESVILLE, MO., VICINITY  
R. MASERANG

1/90

SHOW - ME RPC  
OVERALL VIEW FROM HIGHWAY T, FACING NW

#19



HILLVIEW HTST. DIST.

HUGHESVILLE, MO., VICINITY

R. MASERANG

12/89

SHOW-ME RPC

ROOF DETAIL WITH DORMER WINDOW ON FORMER DAIRY BARN

#20





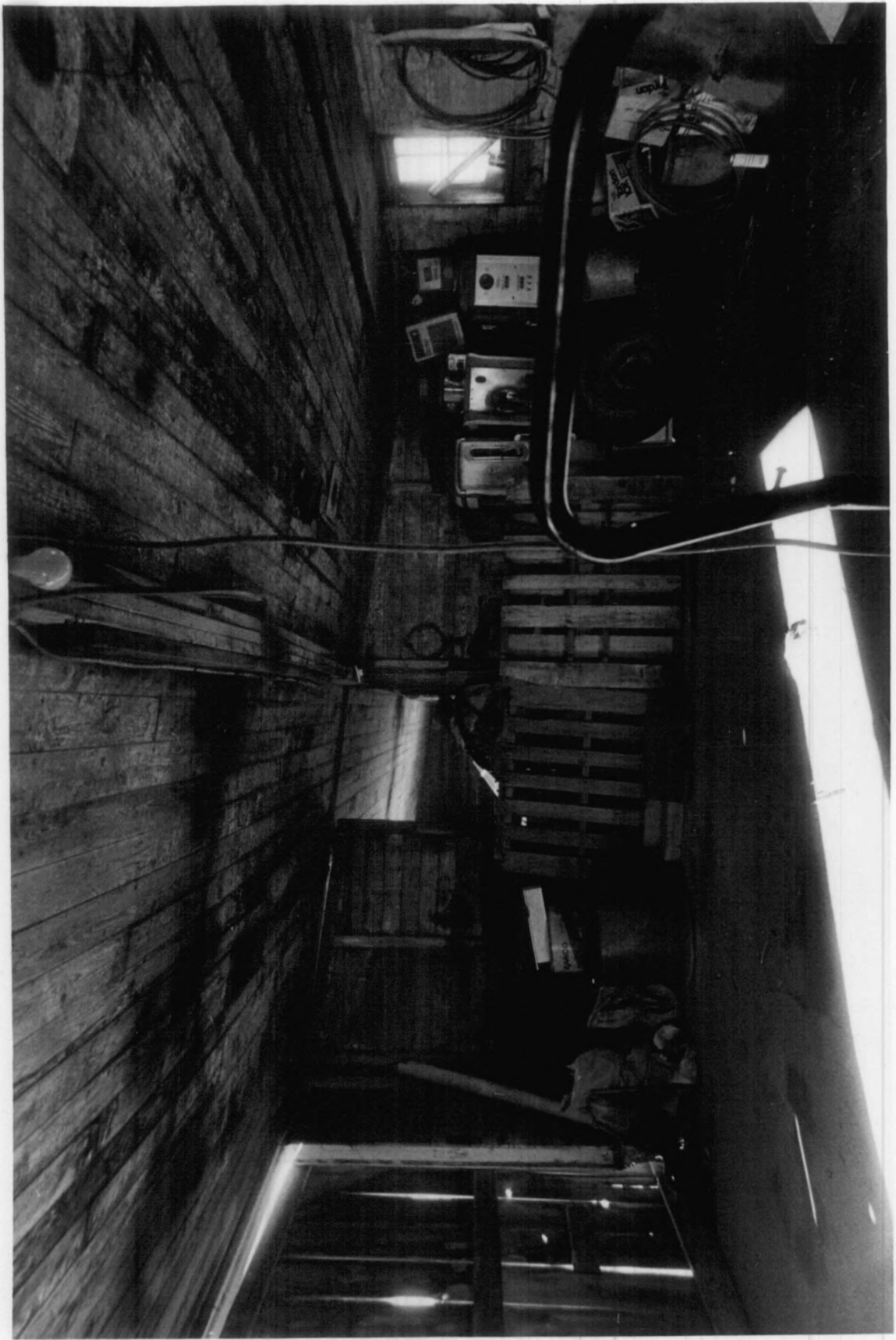


HILLVIEW HIST. DIST.  
HUGHESVILLE, MO., VICINITY  
R. MASERANG

12/89

SHOW-ME RPC  
INTERIOR, FORMER POULTRY HOUSE, FACING W

#21



HILLVIEW HISTORIC DISTRICT

HUGHESVILLE, MO., VICINITY

R. MASERANG

9/89

SHOW-ME APC

INSIDE MAIN WING, FORMER DAIRY BARN, FACING SW

# 22



FORMER  
DAIRY BARN, HILLVIEW HIST. DIST.  
HUGHESVILLE, MO., VICINITY

R. MASERANG

9/89

SHOW-ME RPC  
INTERIOR, SHOWING TWO OF THREE  
AISLES, FACING SW

# 23



FORMER

DAIRY BARN, HILLVIEW HIST. DIST.  
HUGHESVILLE, MO., VICINITY  
R. MASERANG

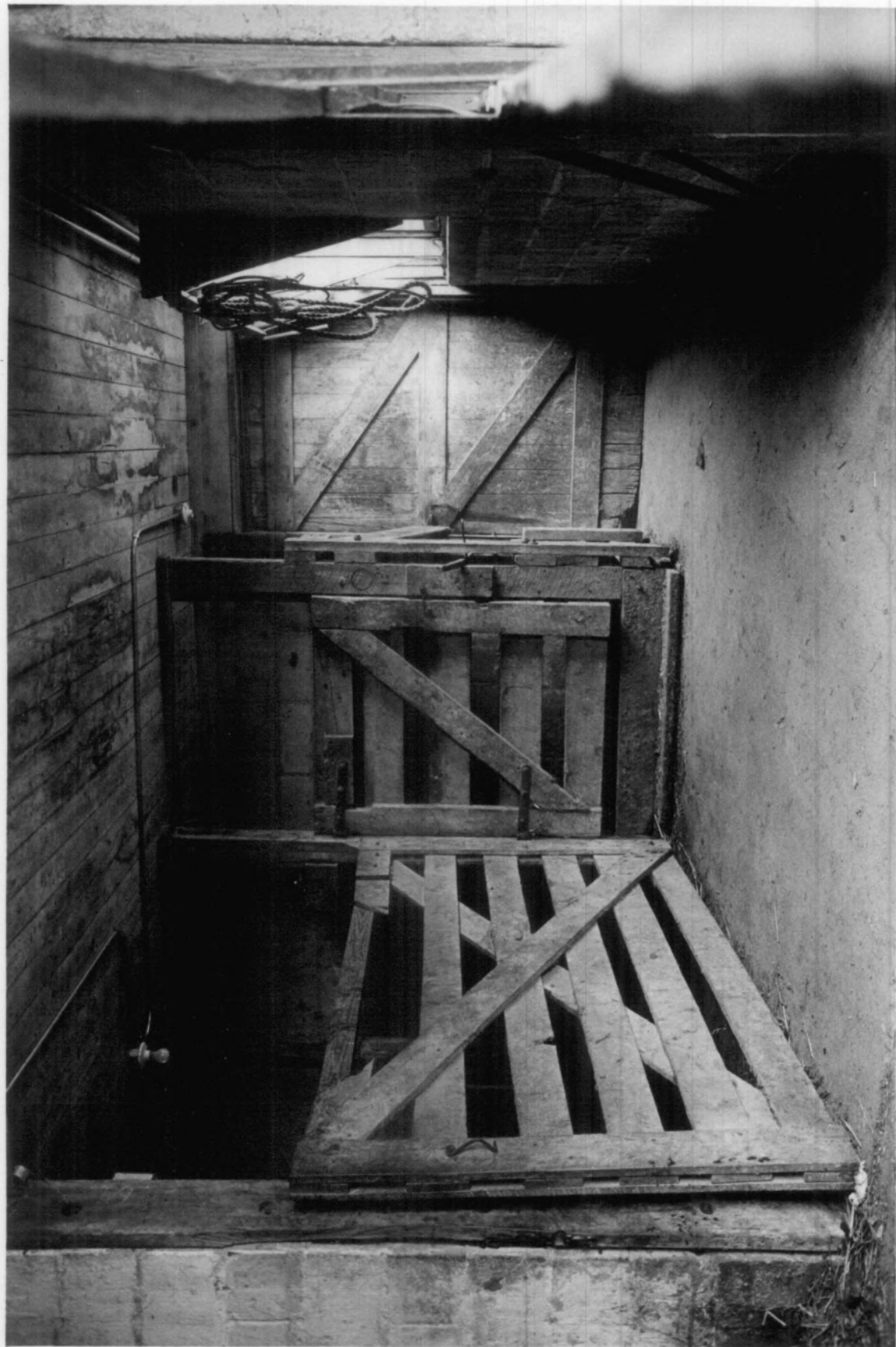
9/89

SHOW-ME RPC

SOUTH END OF MILKING WING AT  
JUNCTURE WITH MAIN BARN WING,  
FACING N

#24







HILLVIEW HISTORIC DISTRICT

HUGHESVILLE, MO., VICINITY

R. MASERANG

12/89

SHOW-ME RPC

INTERIOR, FORMER MILKING WING, FACING SW

# 25



HILLVIEW HISTORIC DISTRICT

HUGHESVILLE, MO., VICINITY

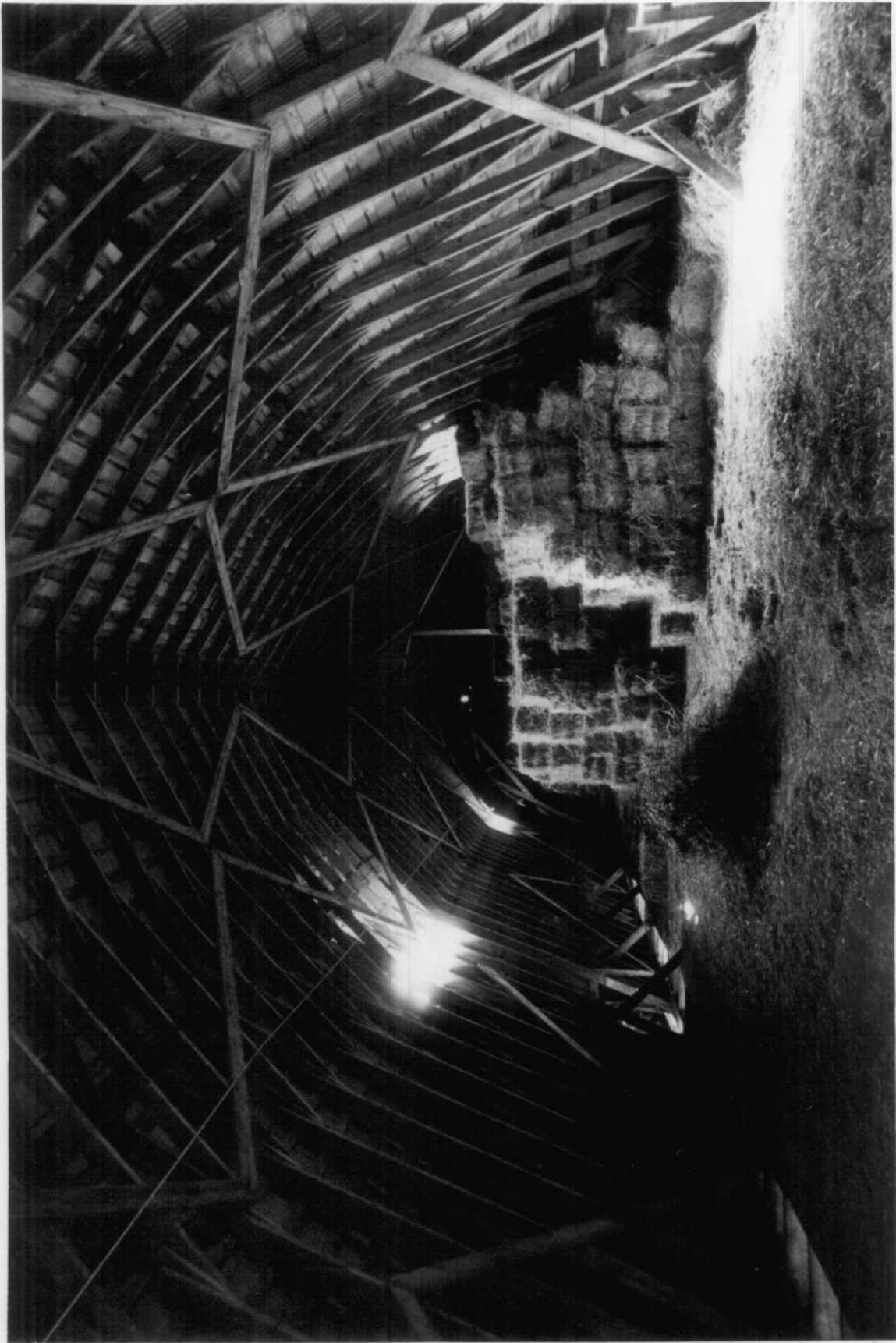
R. MASERANG

12/89

SHOW-ME RPC

LOFT DETAIL, FACING WEST, FORMER DAIRY BARN

#26



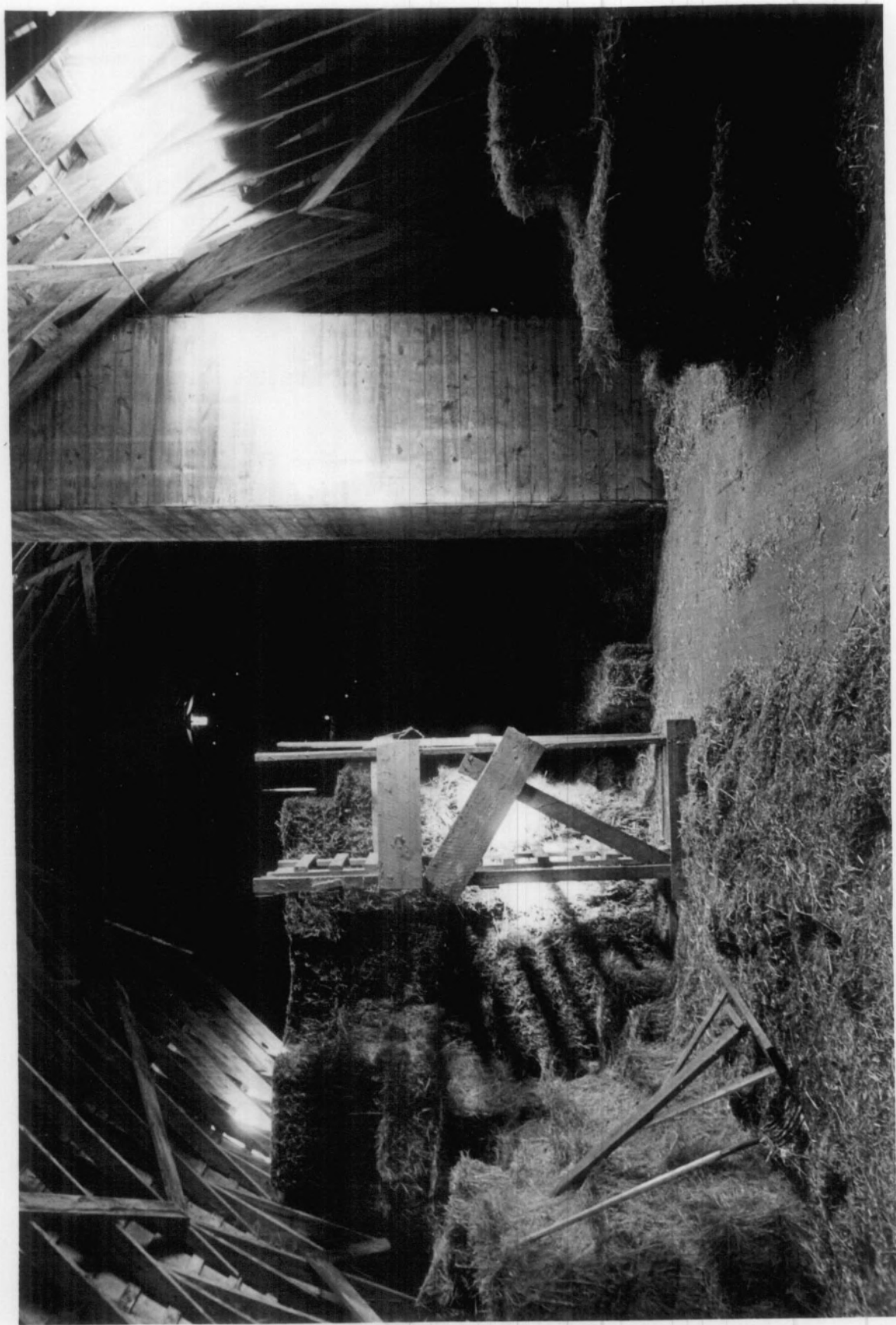
HILLVIEW HIST. DIST.  
HUGHESVILLE, MO., VICINITY  
R. MASERANG

12/89

SHOW-ME RPC

HAY CHUTE + VENTILATION SHAFT, FORMER DAIRY BARN,  
FACING EAST

#27



HILLVIEW HYST. DIST.  
HUGHESVILLE, MO., VICINITY  
R. MASERANG

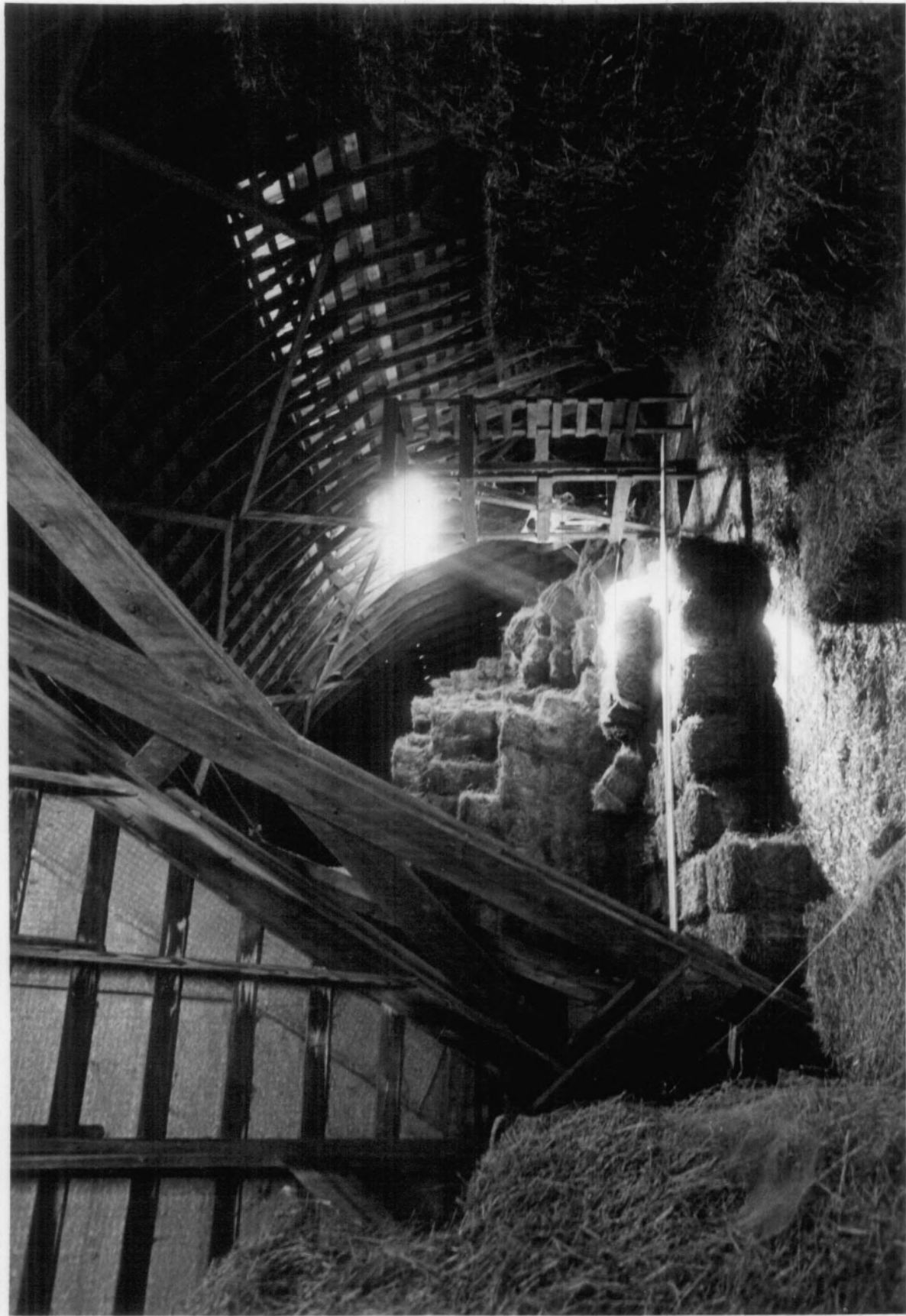
12/89

SHOW-ME RPC

LOFT DETAIL, FORMER DAIRY BARN, AT JUNCTURE, FACING SW

#28







HILLVIEW HIST. DIST.

HUGHESVILLE, MO., VICINITY

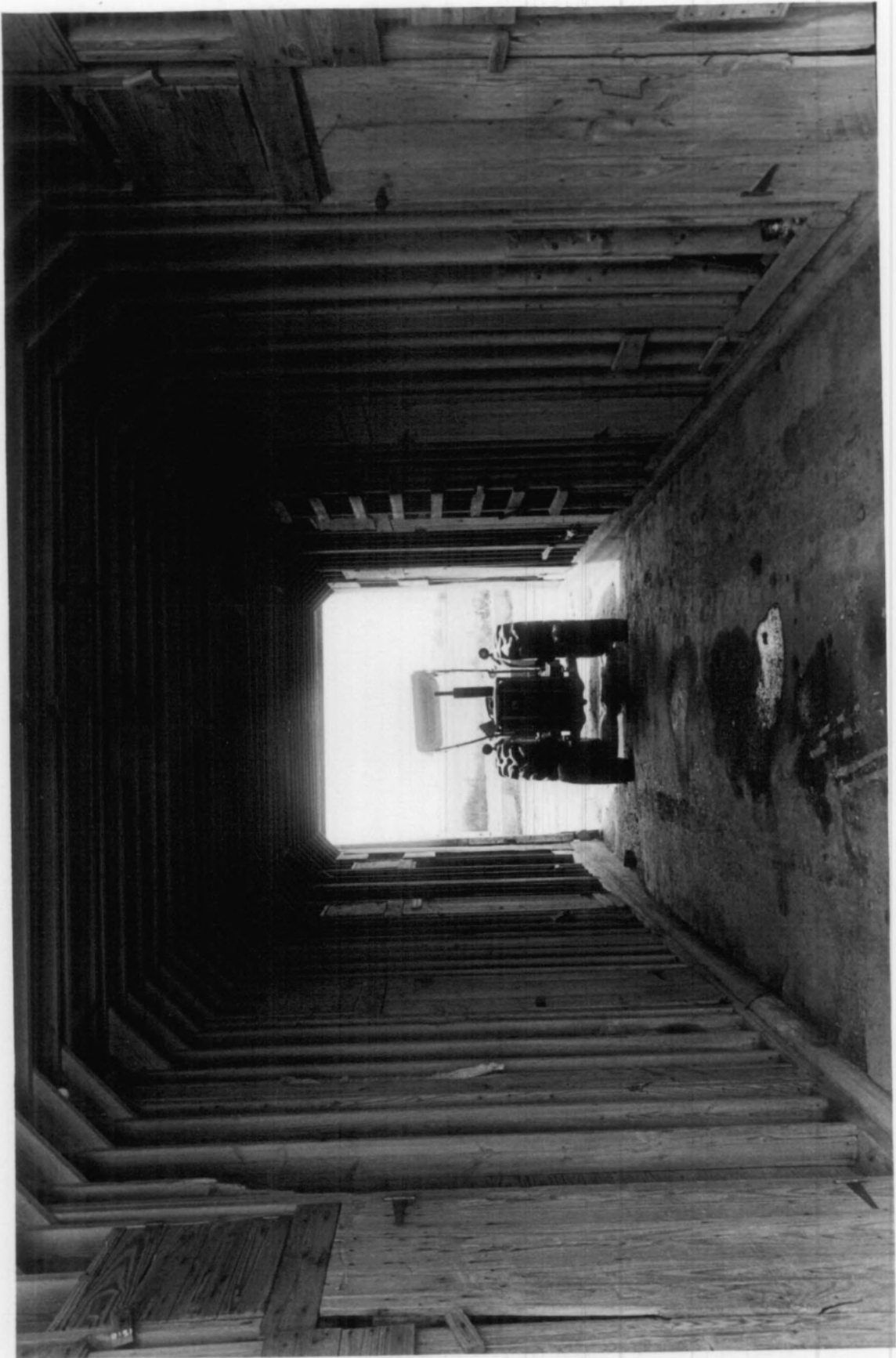
R. MASERANG

9/89

SHOW-ME RPC

FACING S THROUGH CENTRAL AISLE OF GRANARY

#29



GRANARY, HILLVIEW HIST. DIST.

HUGHESVILLE, MO., VICINITY

R. MASERANG

12/89

SHOW-ME RPC

INTERIOR DETAIL, FACING W TOWARD

GRAIN BINS

#30

