

United States Department of the Interior  
National Park Service

National Register of Historic Places  
Registration Form

This form is for use in nominating or requesting determinations for individual properties and districts. See instructions in *How to Complete the National Register of Historic Places Registration Form* (National Register Bulletin 16A). Complete each item by marking "x" in the appropriate box or by entering the information requested. If an item does not apply to the property being documented, enter "N/A" for "not applicable." For functions, architectural classification, materials, and areas of significance, enter only categories and subcategories from the instructions. Place additional entries and narrative items on continuation sheets (NPS Form 10-900a). Use a typewriter, word processor, or computer, to complete all items.

1. Name of Property

historic name Hempstead School

other name/site number N/A

2. Location

street & town 5872 Minerva Avenue N/A not for publication

city or town St. Louis N/A vicinity

state Missouri code MO county St. Louis (Independent City) code 510 zip code 63112

3. State/Federal Agency Certification

As the designated authority under the National Historic Preservation Act, as amended, I hereby certify that this  nomination  request for determination of eligibility meets the documentation standards for registering properties in the National Register of Historic Places and meets the procedural and professional requirements set forth in 36 CFR Part 60. In my opinion, the property  meets  does not meet the National Register criteria. I recommend that this property be considered significant  nationally  statewide  locally. (  See continuation sheet for additional comments.)

Mark A. Miles May 23, 2007  
Signature of certifying official/Title Mark A. Miles/Deputy SHPO Date

Missouri Department of Natural Resources  
State or Federal agency and bureau

In my opinion, the property  meets  does not meet the National Register criteria. (  See continuation sheet for additional comments.)

\_\_\_\_\_  
Signature of certifying official/Title Date

\_\_\_\_\_  
State or Federal agency and bureau

4. National Park Service certification

I hereby certify that the property is: Signature of the Keeper \_\_\_\_\_ Date of Action \_\_\_\_\_

- entered in the National Register.  
 See continuation sheet.
- determined eligible for the National Register  
 See continuation sheet.
- determined not eligible for the National Register.
- removed from the National Register.
- other, (explain:) \_\_\_\_\_

\_\_\_\_\_  
\_\_\_\_\_  
\_\_\_\_\_

Hempstead School  
Name of Property

St. Louis (Independent City), MO  
County and State

**5. Classification**

**Ownership of Property**  
(check as many boxes as apply)

- private
- public-local
- public-State
- public-Federal

**Category of Property**  
(check only one box)

- building(s)
- district
- site
- structure
- object

**Number of Resources within Property**  
(Do not include previously listed resources in the count.)

Contributing	Noncontributing	
1		buildings
		sites
		structures
		objects
1		Total

**Name of related multiple property listing**  
(Enter "N/A" if property is not part of a multiple property listing.)

St. Louis, Missouri, Public Schools of William B. Ittner

**Number of contributing resources previously listed in the National Register**

0

**6. Function or Use**

**Historic Function**  
(Enter categories from instructions)

Education: School

**Current Function**  
(Enter categories from instructions)

Vacant

**7. Description**

**Architectural Classification**  
(Enter categories from instructions)

Tudor Revival: Jacobethan Revival

**Materials**  
(Enter categories from instructions)

foundation Stone  
walls Brick  
roof Slate  
other

**Narrative Description**  
(Describe the historic and current condition of the property on one or more continuation sheets.)

See continuation sheet(s) for Section No. 7

Hempstead School  
Name of Property

St. Louis (Independent City), MO  
County and State

**8. Statement of Significance**

**Applicable National Register Criteria**

(Mark "x" in one or more boxes for the criteria qualifying the property for National Register listing.)

- A** Property is associated with events that have made a significant contribution to the broad patterns of our history.
- B** Property is associated with the lives of persons significant in our past.
- C** Property embodies the distinctive characteristics of a type, period, or method of construction or represents the work of a master, or possesses high artistic values, or represents a significant and distinguishable entity whose components lack individual distinction.
- D** Property has yielded, or is likely to yield, information important in prehistory or history.

**Criteria Considerations**

(Mark "x" in all the boxes that apply.)

Property is:

- A** owned by a religious institution or used for religious purposes.
- B** removed from its original location.
- C** a birthplace or grave.
- D** a cemetery.
- E** a reconstructed building, object, or structure.
- F** a commemorative property.
- G** less than 50 years of age or achieved significance within the past 50 years.

**Narrative Statement of Significance**

(Explain the significance of the property on one or more continuation sheets.)

**9. Major Bibliographical References**

**Bibliography**

(Cite the books, articles, and other sources used in preparing this form on one or more continuation sheets.)

**Previous documentation on file (NPS):**

- preliminary determination of individual listing (36 CFR 67) has been requested
- previously listed in the National Register
- previously determined eligible by the National Register
- designated a National Historic Landmark
- recorded by Historic American Buildings Survey # \_\_\_\_\_
- recorded by Historic American Engineering Record # \_\_\_\_\_

**Areas of Significance**

(enter categories from instructions)

Architecture  
\_\_\_\_\_  
\_\_\_\_\_  
\_\_\_\_\_  
\_\_\_\_\_  
\_\_\_\_\_

**Period of Significance**

1906-1908  
\_\_\_\_\_  
\_\_\_\_\_

**Significant Dates**

N/A  
\_\_\_\_\_  
\_\_\_\_\_

**Significant Persons**

(Complete if Criterion B is marked above)

N/A  
\_\_\_\_\_

**Cultural Affiliation**

N/A  
\_\_\_\_\_  
\_\_\_\_\_

**Architect/Builder**

Ittner, William B.  
\_\_\_\_\_  
H. Lloyd B& C Co.  
\_\_\_\_\_

See continuation sheet(s) for Section No. 8

**Primary location of additional data:**

- State Historic Preservation Office
- Other State agency
- Federal agency
- Local government
- University
- Other Name of repository:

St. Louis, Missouri, Public Schools of William Ittner MPDF  
St. Louis Public Schools Survey  
\_\_\_\_\_

See continuation sheet(s) for Section No. 9

Hempstead School  
Name of Property

St. Louis (Independent City), MO  
County and State

**10. Geographical Data**

**Acreeage of Property** Approximately 2.53 acres.

**UTM References**

(Place additional boundaries of the property on a continuation sheet.)

1 1/5 7/3/6/2/7/3 4/2/8/3/3/5/9  
Zone Easting Northing

2 / / / / / / / / / / / / /  
Zone Easting Northing

3 / / / / / / / / / / / / /  
Zone Easting Northing

4 / / / / / / / / / / / / /  
Zone Easting Northing

**Verbal Boundary Description**

(Describe the boundaries of the property.)

See Attached

Property Tax No.

**Boundary Justification**

(Explain why the boundaries were selected.)

See Attached

See continuation sheet(s) for Section No. 10

**11. Form Prepared By**

name/title Julie Wooldridge  
organization Lafser & Assocaites date 1December 2006  
street & number 2711 Thomas Drive Suite 209 telephone 573-339-4625  
city or town Cape Girardeau state MO zip code 63701

**Additional Documentation**

Submit the following items with the completed form:

**Continuation Sheets**

**Maps** A **USGS map** (7.5 or 15 minute series) indicating the property's location.

A **Sketch map** for historic districts and properties having large acreage or numerous resources.

**Photographs:** Representative **black and white photographs** of the property.

**Additional items:** (Check with the SHPO or FPO for any additional items)

**Property Owner**

name/title HFM Partnership LLC  
street & number 3617 Route C C telephone 573-635-0211  
city or town Jefferson City state MO zip code 63109

**Paperwork Reduction Act Statement:** This information is being collected for applications to the National Register of Historic Places to nominate properties for listing or determine eligibility for listing, to list properties, and to amend existing listings. Response to this request is required to obtain a benefit in accordance with the National Historic Preservation Act, as amended (16 U.S.C. 470 *et seq.*).

**Estimated Burden Statement:** Public reporting burden for this form is estimated to average 18.1 hours per response including time for reviewing instructions, gathering and maintaining data, and completing and reviewing the form. Direct comments regarding this burden estimate or any aspect of this form to the Chief, Administrative Services Division, National Park Service, P.O. Box 37127, Washington, DC 20013-7127; and the Office of Management and Budget, Paperwork Reductions Projects (1024-0018), Washington, DC 20503.

United States Department of the Interior  
National Park Service

## National Register of Historic Places Continuation Sheet

Section number 7 Page 1

**Hempstead School**  
St. Louis, Missouri, Public Schools of William B. Ittner  
**St. Louis (Independent City), MO**

---

### Summary

Hempstead School, located at 5872 Minerva Avenue in St. Louis, Missouri, is a 1906 two-story brick and stone Jacobethan Revival style elementary school. The building is nominated as part of "The St. Louis, Missouri, Public Schools of William B. Ittner" Multiple Property Documentation Form and relates to the context "The Refining of the "Open Plan" in St. Louis Public Schools, 1902-1910." It is an example of the "E (Open)-Plan Elementary Schools" property type defined in the cover document. A variation of the basic E-Plan, Hempstead School is centered on City Block 3823 W at the corner of Minerva Avenue and Hamilton Boulevard, facing northeast. The symmetrical front façade is divided into 6 parts, including two projecting, gabled wings on either end, three projected entrances, and the building's core. Polychromatic exterior brickwork is broken by decorative stonework, banded windows and stone belt courses on each façade. Half timbered dormers and clustered stack chimneys ascend from the red slate roofline. The school sits on a 464' X 240' asphalt lot, enclosed by an iron fence, with playground equipment on the northwest and northeast corners, and landscaped front courtyard with a school name plaque. In 1990 renovations were made to the building, which included repairing the brick front gables, some window replacement, interior updates, and an 83' X 53' one-story multipurpose room added to the southeast façade. The interior plan retains integrity, showing the characteristic classroom arrangement of the Ittner E-shaped plan, however some neglect and vandalism have left a few rooms in poor condition. Nonetheless, the building retains overall integrity and is an excellent example of Ittner's work.

### Site

The Hempstead School is located in the Cabanne neighborhood, on the western edge of St. Louis City. The original school building measures approximately 457' X 240', and is bounded by Hamilton Boulevard to the west, Minerva Avenue to the north, Laurel Street to the east, and an alley to the south that divides it from the remaining residential portion of the block (Figure 1). The residential character of the neighborhood continues to reinforce the setting and feel of the early 20<sup>th</sup> century school by retaining the turn-of-the-century multi-family buildings and a Gothic Revival style church across the northeastern corner of Hamilton and Minerva.

### Exterior

#### **Facade**

The façade of Hempstead School contains two projecting end bays with front gables, two inner entrance projections, and a central projection containing the main entrance. (Photos 1 & 2) The central projection is accessed by a low stone stair surrounded by

United States Department of the Interior  
National Park Service

## National Register of Historic Places Continuation Sheet

Section number 7 Page 2

**Hempstead School**  
St. Louis, Missouri, Public Schools of William B. Ittner  
**St. Louis (Independent City), MO**

brick walls with stone coping. The double-door entrance is recessed behind a three bay stone polychromatic arcade. A Tudor arched four pane transom is mounted above the doors, with boarded three-pane lattice windows and transoms on either side of the entrance. Above the arcade rise seven brick arches with intricate relief sculpture in the stone supports. Fourteen blind arches separate the lower half of the projection from the second floor four one-over-one windows with transoms and stone quoined window surrounds. The second transom light has been replaced with an air conditioning unit. A sash window with stone sill and arched stone lintel fills the stone coped Flemish gabled parapet. Brick detailing and a stone finial accent the gable. The corners of the projection feature two crenellated towers. The first floor of each tower contains bricked window openings with stone lintels, while the second level holds a single camber window with stone sill and lintel. Stone belt courses run below the first floor windows, and above the second story windows. Additional courses run across the entire projection, located just above the arcade, the blind arches, and the second-story windows. In the latter, cartouches project from each corner of the towers (Photo 3).

The core of the building extends to the northwest and southeast from either side of the main entrance. The fenestration on the first and second level consists of five banded, triple-hung windows on either side of a central one-over-one sash window. The ground level contains a three-one-three fenestration, though the windows have been boarded to protect against vandalism. A stone belt course accents the top of the water table, which ends half way up the ground level. (Photo 1)

On the outer edges of the core stand crenellated entrance projections. A paired double-door entrance with boarded sidelights and six-pane transom stand below a compound Tudor arch. The second floor contains three banded triple-hung windows with single pane transom lights and a soldier lintel. A half timbered dormer rises above the crenellation, with two boarded sash windows. (Photo 4)

The projecting wings at either end of the building have five banded triple-hung windows with soldier lintels on both the first and second floor. The three ground level windows have been boarded to project against vandalism. The cross gable contains stone in the apex, and a single window. (Photo 5)

### Northwest Façade

The northwest façade is symmetrical and simple compared to the front. Five banded triple-hung windows are centered on the first and second level, with a single sash window on either side. The ground floor contains the original wood windows which have been boarded from the inside and covered with metal screens. The fenestration consists of three sets of three windows, separated by a single window opening. Three

United States Department of the Interior  
National Park Service

## National Register of Historic Places Continuation Sheet

Section number 7 Page 3

**Hempstead School**  
St. Louis, Missouri, Public Schools of William B. Ittner  
**St. Louis (Independent City), MO**

---

have been replaced with air conditioning units. The roofline contains two clustered stack chimneys with stone coping and a ventilation cross gable. (Photos 4 & 5)

### **Southwest (Rear) Façade**

The symmetrical rear façade can be broken into five parts, including the outer wings, the central projection, and the core. Each outer wing contains two bays. The outer bay contains three boarded windows on the ground floor, five banded triple-hung bays on the first and second level, and a sash window in the stone coped gable. The inner bay contains double-door entrances recessed below compound arches on the ground level, with a single one-over-one sash window on the first- and second-story. On the core of the building are five banded triple-hung windows. A brick wall with three window openings and a double-door entrance rises to the first floor, with an aluminum fencing enclosing the courtyard. The core, along with the brick and aluminum walled courtyards, connects to the central projection. This portion of the building contains two sets of double-door entrances on the ground floor with sash windows on either side. These windows project off the wall, and rise to the first floor balcony. Boarded windows and wood doors access the balcony. Above each of these projections are five banded triple-hung windows. A polychromatic chimney stack rises a full story from the western end of the rear projection. (Photo 6)

### **Southeast Façade**

The original fenestration of the south east façade mimicked that of the northwest. Five banded triple-hung windows with single sash windows on either side fill the first and second level. The northern six openings on the ground level are still intact, but at the southern fenestration of the ground floor have been replaced by an entrance to the 1990 addition. (Photos 7 & 8)

### **1990 Addition**

The 1990 one-story brick multipurpose building is attached to the southeastern façade of the original building by a small corridor, which replaced the southern five windows of the ground floor. The corridor contains double-door entrances with sidelights and Tudor arched transoms, recessed below compound arches, which replicate those found on the original building. The northeast and southwest facades are nearly identical, with brick walls separated by four brick pilasters. The southeast façade is simple, displaying only the stone and brick belt courses that accent every façade of the addition. The roofs of the corridor and the addition are flat. (Photo 7- 9)

United States Department of the Interior  
National Park Service

## National Register of Historic Places Continuation Sheet

Section number 7 Page 4

**Hempstead School**  
St. Louis, Missouri, Public Schools of William B. Ittner  
**St. Louis (Independent City), MO**

---

### Interior

The interior of the E-plan school as described in the multiple properties documentation form "The St. Louis, Missouri, Public Schools of William B. Ittner" contains,

*"two or three classrooms ...in each wing per floor; the center wing is often reduced in size and accommodates a kindergarten or entrance stairway. A one-sided corridor runs the length of the center block, usually having stairwells at either end in the corners formed by the wings. Classrooms are located across the opposite side, also running the length of the block, usually four in number...Basements are outfitted with playrooms, restrooms, boiler rooms and storage space."*

The Hempstead school mimics this layout, as described below.

### **Ground Floor**

The main central entrance on the front of the building leads to a stairwell, which dumps into a central T-Shaped fan room. This room has retained historic water fountains on the eastern wall. A partition wall is broken by five windows, and a stairwell that leads to the rear corridor. Glazed brick lines the walls of the corridor, with painted brick above. From east to west along the rear wall, the corridor contains a custodian closet, two small storage rooms, the boiler and coal rooms, and a classroom. The corridor terminates in perpendicular hallways at either end, which are accessed by stairwells from the front secondary entrances. The west hallway opens to two classrooms and a resource room on the east, and the boys' restroom and library on the west. The east hallway opens to a lunchroom (Photo 10) and kitchen on the west, and a music room, special education classroom, and girls bathroom on the east. These rooms share the brick detailing of the hallway. A corridor in the eastern wing connects the original building to the addition. The addition contains a lobby storage room, and bathroom at the west end, with the gymnasium filling the remainder of the space (Photo 11), and an exit door at the southeast corner. (Figure 2)

The ground floor has been slightly altered to account for the new multipurpose addition. The present lunch room and northern classrooms once contained separate girls and boys gymnasiums. The lunchroom was originally located in the eastern wing, replaced by the present music and special education rooms. (Figure 3) Unfortunately, vandalism and neglect have left a few of the ground floor rooms, including the lunch room, in disrepair.

### **First Floor**

Accessed by the original wood and glass main entrance, the central stairwell features a



United States Department of the Interior  
National Park Service

## National Register of Historic Places Continuation Sheet

Section number 7 Page 5

**Hempstead School**  
St. Louis, Missouri, Public Schools of William B. Ittner  
**St. Louis (Independent City), MO**

---

marble chair rail, and dumps into a central corridor that runs east to west. (Photo 12) The hallway terminates in stairwells in the east and west wings of the building, which feature the original wood and glass doors and surrounds. The stairwells contain the original wood railings and trims (Photo 13), as do the hallways, which also retain the original hardwood floors and marble baseboards. On the north side of the building are four classrooms, with coat rooms at one end. On the south side of the main corridor is the original kindergarten room, with coat rooms on either end. (Photo 14) A bathroom is found on the eastern side of the kindergarten room, accessed from the hallway. Offices are found across from the stairwells at either end of the hallway. The west wing contains a small passage and two classrooms on the south wall, and a large classroom on the west wall. The east wing contains a large classroom on the south wall and a passage that connects to two classrooms on the east wall. A large classroom is found on the north wall of both wings. (Figure 4) The classrooms are accessed by the original wood and glass doors, and contain the original wood cabinetry, hardwood floors, and 1908 blackboards. (Photo 15) The wardrobe doors were installed in 1908 as well, and the wardrobe rooms maintain the original wood and iron coat hangers.

Some renovations have been made to the first floor, including general updates to plumbing and electric to comply with code, and the installation of dropped ceilings in some of the classrooms. The height of the ceilings has been maintained as much as possible.

### Second Floor

The second floor is accessed only by the east and west stairwell (Photo 16). The long corridor maintains its wood chair rail, historic water fountains with iron supports and hardwood floors. Three classrooms fill each wing. A small classroom is across from the eastern stairwell, and the nurse's office is located across from the western stairwell. The teachers lounge and art room are located on the south wall of the corridor, along with two bathrooms. These bathrooms maintain the original wood stalls and entrance doors. (Photo 17) Four classrooms with coat rooms are located on the north wall of the building, with an office and the principal's office in the main front projection (Photo 18). A bathroom and a storage room (which features the original shelving) fill the space created by the front towers. (Figure 5) The second floor also retains the original masonry and wood elements, as found on the first floor, though vandalism has left a few of the rooms in poor condition.

### Integrity

The MPDF "The St. Louis, Missouri, Public Schools of William B. Ittner" specifies that buildings nominated as an E (Open)- Plan Elementary School meet certain requirements, retaining "physical integrity, exhibiting original materials (with the possible

United States Department of the Interior  
National Park Service

## National Register of Historic Places Continuation Sheet

Section number 7 Page 6

**Hempstead School**  
St. Louis, Missouri, Public Schools of William B. Ittner  
**St. Louis (Independent City), MO**

---

exception of room material). The school must retain characteristically- shaped plans, scale, roof shape and fenestration in order to convey a clear sense of historic character. The schools must be in their original locations, landscaped approximately in their original fashion. Physical condition of the building should be reasonably good.”<sup>1</sup> It continues to specify that tuck pointing/ repointing be of the same color and material of the original building, replacement window sashes be of painted wood matching the original dimensions, and additions be one story in height and at the rear if possible, though unobtrusive side additions are permissible.

The Hempstead School is still in good condition, and the current owners have taken measures to secure the building from future vandalism. Some general updating to comply with code and an unobtrusive addition to the southeast corner have slightly altered the building from its original construction, but these changes do not detract from the building’s historic character. The original wood windows were replaced with painted wood windows c. 1920, maintaining the original shape and size. Some tuck pointing has occurred on the more deteriorated parts of the building, mostly near the roof on the rear and northwest facades, and in the gables of the northeast façade. Though not identical to the original in color, a similar shade and the same material was used. These changes reflect the remaining architectural details though not identical to the original construction. In 1961 metal portable schools were installed in the front courtyard of the building. At this time the front stairwell and brick wall leading to the northern secondary entrance on the main façade were removed. However, these metal portable schools were removed in 1992. Despite the alterations, Hempstead School clearly represents the E (Open)- Plan Elementary School, and continues to possess integrity of setting, feeling, materials, location, design, workmanship, and association.

### Notes:

<sup>1</sup> Cynthia H. Longwisch. *National Register of Historic Places Multiple Property Nomination “The St. Louis, Missouri, Public Schools of William B. Ittner,”* (Washington D.C.: United States Department of the Interior National Park Service, 2 September 1992) F7.

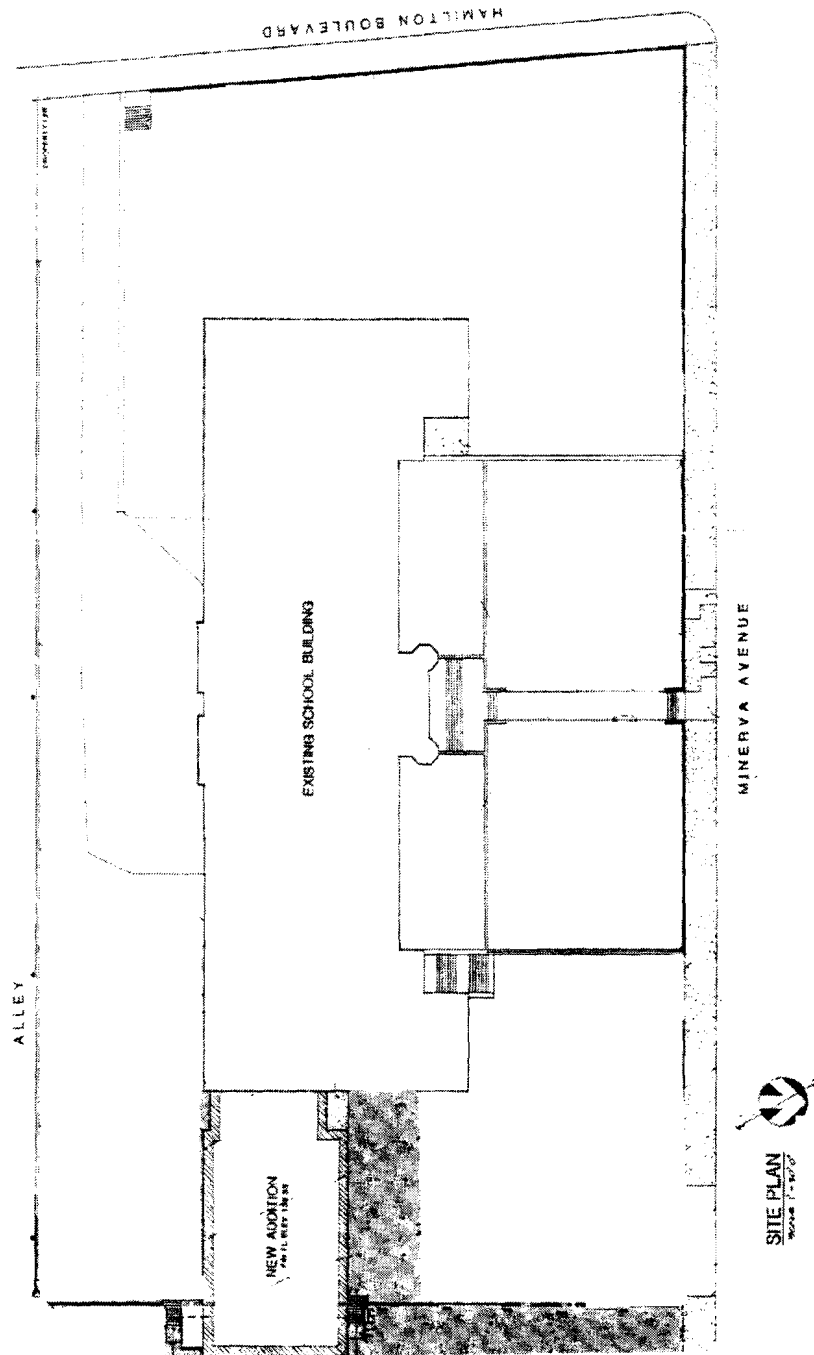
United States Department of the Interior  
National Park Service

# National Register of Historic Places Continuation Sheet

Section number 7 Page 7

**Hempstead School**  
St. Louis, Missouri, Public Schools of William B. Ittner  
**St. Louis (Independent City), MO**

Figure 1- Pearce Corporation, Site Plan: Additions and Alterations Hempstead Elementary School, (St. Louis: St. Louis Public Schools, 1990).



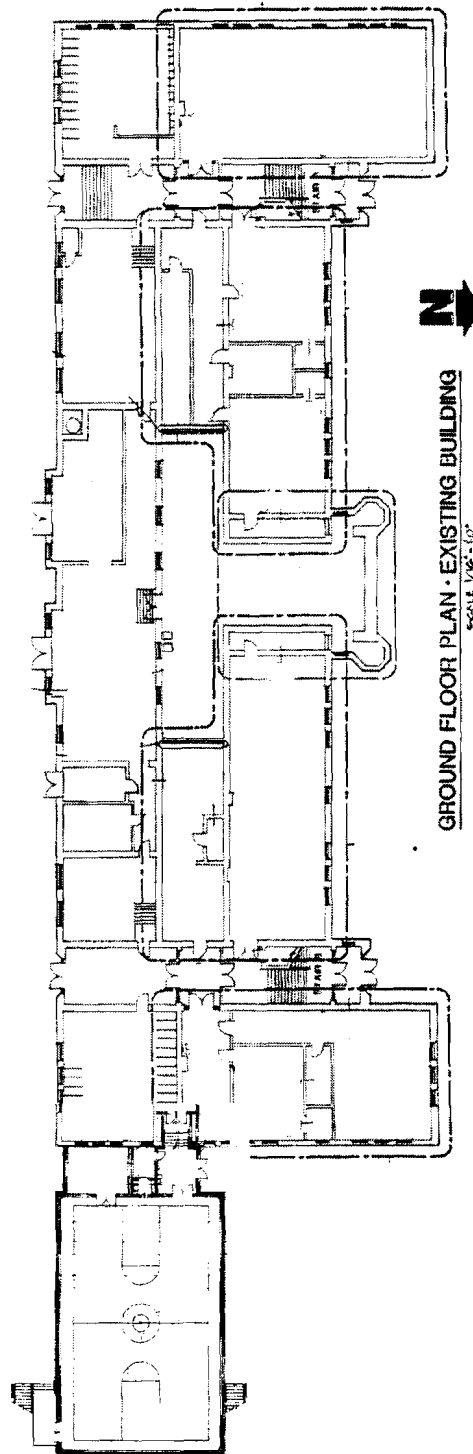
United States Department of the Interior  
National Park Service

# National Register of Historic Places Continuation Sheet

Section number 7 Page 8

**Hempstead School**  
St. Louis, Missouri, Public Schools of William B. Ittner  
**St. Louis (Independent City), MO**

Figure 2- Pearce Corporation, Ground Floor Plan: Additions and Alterations Hempstead Elementary School, (St. Louis: St. Louis Public Schools, 1990).



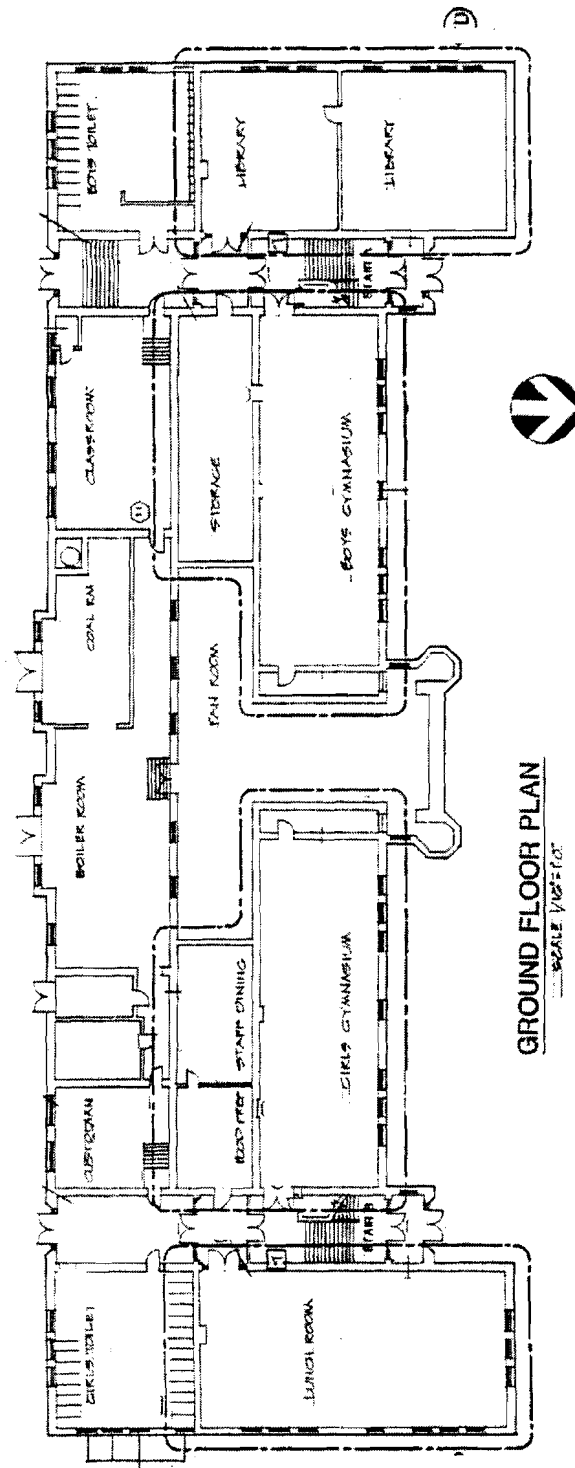
United States Department of the Interior  
National Park Service

# National Register of Historic Places Continuation Sheet

Section number 7 Page 9

**Hempstead School**  
St. Louis, Missouri, Public Schools of William B. Ittner  
**St. Louis (Independent City), MO**

Figure 3- Pearce Corporation, Original Ground Floor Plan: Additions and Alterations  
Hempstead Elementary School, (St. Louis: St. Louis Public Schools, 1990).



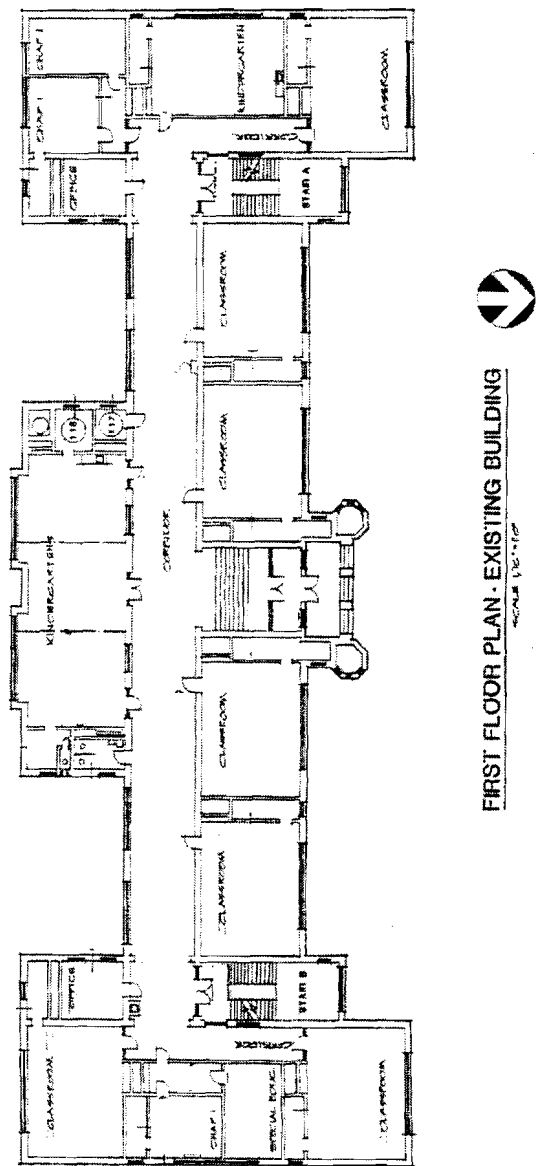
United States Department of the Interior  
National Park Service

# National Register of Historic Places Continuation Sheet

Section number 7 Page 10

**Hempstead School**  
St. Louis, Missouri, Public Schools of William B. Ittner  
**St. Louis (Independent City), MO**

Figure 4 – Pearce Corporation, First Floor Plan: Additions and Alterations Hempstead Elementary School, (St. Louis: St. Louis Public Schools, 1990).



**Part of Addition**

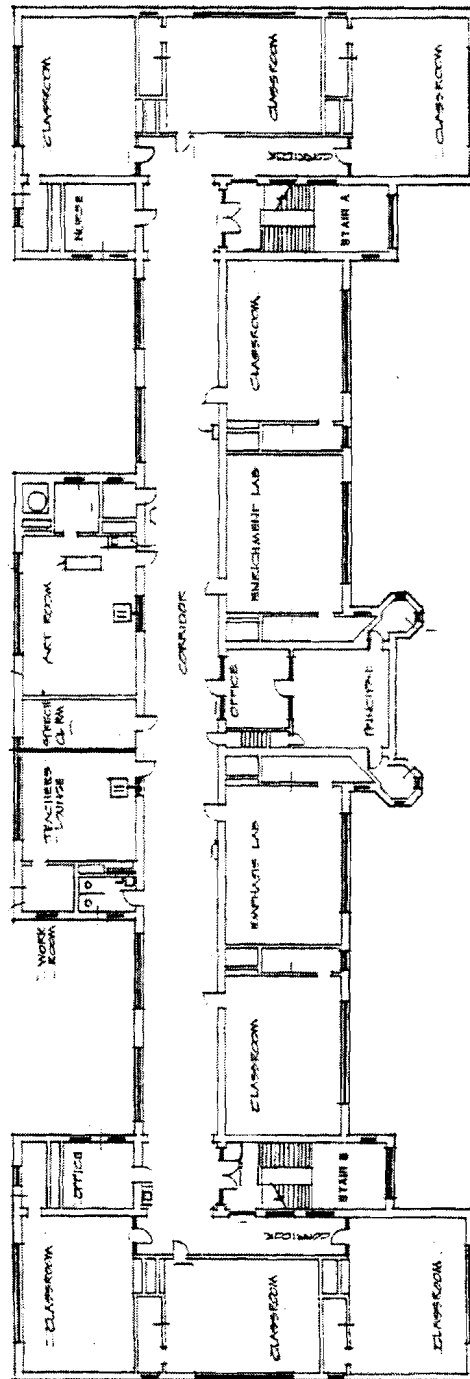
United States Department of the Interior  
National Park Service

# National Register of Historic Places Continuation Sheet

Section number 7 Page 11

**Hempstead School**  
St. Louis, Missouri, Public Schools of William B. Ittner  
**St. Louis (Independent City), MO**

Figure 5- Pearce Corporation, Second Floor Plan: Additions and Alterations Hempstead Elementary School, (St. Louis: St. Louis Public Schools, 1990).



**SECOND FLOOR PLAN - EXISTING BUILDING**

scale 1/8" = 1'-0"

United States Department of the Interior  
National Park Service

## National Register of Historic Places Continuation Sheet

Section number 8 Page 12

**Hempstead School**  
St. Louis, Missouri, Public Schools of William B. Ittner  
**St. Louis (Independent City), MO**

---

### Summary

Hempstead School, located at 5872 Minerva Avenue, in St. Louis, Missouri is locally significant under National Register Criterion C in the area of ARCHITECTURE for its archetype and association with master architect William B. Ittner. It is an example of the E ("Open")- Plan Elementary School property type defined in the multiple property submission "The St. Louis, Missouri Public Schools of William B. Ittner," and is associated with the context "The Refining of the 'Open Plan' in St. Louis Public Schools, 1902-1910." Hempstead School was designed by Ittner in 1906; opened in 1907 and remained in use as a public elementary school under the direction of the St. Louis Board of Education until July of 2003. Its plan is a variation of the E-Plan elementary school, the "culmination of three years of study and work to devise the best possible elementary school plan for St. Louis."<sup>2</sup> Ittner altered many of his basic designs over the years, and his inclusion of additional projected entrances to Hempstead's main façade allowed for better air circulation and traffic flow through the building. The school looks much as it did when it opened, and meets the requirements for nomination of this property type as defined in the MPS. Hempstead School's period of significance is 1906-1908, the period of design and construction.

### History

In 1903 the St. Louis Board of Education bought a lot at the corner of Minerva Avenue and Hamilton Boulevard for \$13,150.00.<sup>3</sup> In 1905 Governor Joseph Folk signed compulsory education into law,<sup>4</sup> and forced the public school system to expand their facilities for the education of the additional 2,629 students. To compensate for the influx of students the new law added to the Cabanne neighborhood district, William B. Ittner, Commissioner of School Buildings, was given a budget of \$180,560.80 for a new school in 1906. The H. Lloyd Building and Construction Company began work on the school later that year.<sup>5</sup> The 73,465 square foot school opened on September 10, 1907 at a cost of \$182,484.16.<sup>6</sup> But the school was not completed until 1908, when the wardrobe doors, electric, heating, plumbing, and blackboards were installed for a total cost of \$191,503.45.<sup>7</sup> Hempstead was maintained as an elementary school over the next 95 years and closed in 2003 as a result of budget cuts by Board of Education.<sup>8</sup>

The school was named after Edward Hempstead, the first Missouri delegate in congress. Hempstead worked with the federal government to secure land in Missouri and Arkansas to be used for the public school systems. Hempstead took his seat in office in 1813, working with Henry Clay, the Speaker of the House. One of his major undertakings was deciphering the Spanish and French land grants, and spoke in congress to prohibit the abolition of grant recognition in areas west of the Mississippi River.<sup>9</sup>



United States Department of the Interior  
National Park Service

### National Register of Historic Places Continuation Sheet

Section number 8 Page 13

**Hempstead School**  
St. Louis, Missouri, Public Schools of William B. Ittner  
St. Louis (Independent City), MO



Hempstead School and Edward Hempstead (Inset). Taken from St. Louis School Scrapbook. Vol. 1 p 52. On file with Missouri Historical Society.

### Architecture

Hempstead School is an example of the E (Open)-Plan subtype established in the multiple property document "The St. Louis, Missouri, Public Schools of William B. Ittner." The school is significant as a reflection of master architect William B. Ittner's most prominent and frequently used form, and an excellent representation of his utilization of the Jacobethan style.

The E (Open)-Plan, as defined, is a main center block paralleling the street and three wings, usually with two on the ends and one at the center. Hempstead School follows this design, with variation in two places. The first is the presence of two projected entrances just inside the center facing walls of the outer wings. The second deviation from the basic E-Plan is the projection on the rear of the building, which contains the kindergarten. The spatial arrangement of the interior follows the E-Plan archetype: a one-sided corridor with four classrooms approximately 24' X 32' on the front of the building; two to three classrooms in each wing; a stairwell at the corners created by the core and the wings; a stairwell in the central wing; and basement bathrooms. When constructed, the building contained separate playrooms for boys and girls on the ground

United States Department of the Interior  
National Park Service

## National Register of Historic Places Continuation Sheet

Section number 8 Page 14

**Hempstead School**  
St. Louis, Missouri, Public Schools of William B. Ittner  
**St. Louis (Independent City), MO**

---

level, an element common in many of Ittner's designs.<sup>10</sup>

Hempstead School was built in the Jacobethan style, a motif Ittner favored in two-thirds of his buildings from 1901-1910. The multi-colored red brick walls are accented very little, and stone is used sparingly, keeping the design and materials simple. The only distinctive elaboration is on the entrance, which Ittner "dignified" with a Flemish gable, stone encrusted arcade, and relief sculpture. The inclusion of castellated towers on the corners of the central projection is repeated in many schools from his career as Commissioner of School Buildings. The building retains the exterior and interior elements it possessed at construction, maintaining its integrity and regal stature that made Ittner's E-Plan schools the standard by which other St. Louis schools were judged.<sup>11</sup>

Forty-seven of William B. Ittner's Schools were extant when Landmark's Association completed a survey of St. Louis City Schools in 1987. Many of these have been listed on the National Register of Historic Places, and though several of Ittner's buildings share the E-Shaped plan, Hempstead School is unique because of its additional front entrances. The school continues to reflect the archetype most associated with William B. Ittner, and retains integrity from its early twentieth-century period of significance.

United States Department of the Interior  
National Park Service

## National Register of Historic Places Continuation Sheet

Section number 8 Page 15

**Hempstead School**  
St. Louis, Missouri, Public Schools of William B. Ittner  
**St. Louis (Independent City), MO**

---

### Notes:

<sup>2</sup> Longwisch.

<sup>3</sup> St. Louis Board of Education. *Annual Report-St. Louis Board of Education 1905-1906*. (St. Louis: City of St. Louis, 1906), III.

<sup>4</sup> City of St. Louis. St. Louis Historic Context: Education. Modified 30 June 1996. Accessed December 6, 2006. <http://stlouis.missouri.org/government/heritage/history/education.htm>

<sup>5</sup> City of St. Louis Building Permits. On file with the Comptroller's Office, City Hall.

<sup>6</sup> St. Louis Board of Education. *Annual Report-St. Louis Board of Education 1906-1907*. (St. Louis: City of St. Louis, 1907), 132.

<sup>7</sup> St. Louis Board of Education. *Annual Report- St. Louis Board of Education 1908-1909*. (St. Louis: City of St. Louis, 1908 ), 41.

<sup>8</sup> Jake Wagman. "District Details School Closings in City," *St. Louis Post Dispatch*, 14 July 2003 sec. News, 1A.

<sup>9</sup> "Edward Hempstead Was First Missouri Delegate," *St. Louis School Scrapbook*. Vol. ,1 50-52. On file with Missouri Historical Society.

<sup>10</sup> Longwisch.

<sup>11</sup> Longwisch.

United States Department of the Interior  
National Park Service

## National Register of Historic Places Continuation Sheet

Section number 9 Page 16

**Hempstead School**  
St. Louis, Missouri, Public Schools of William B. Ittner  
**St. Louis (Independent City), MO**

---

City of St. Louis Building Permits. On file with the Comptroller's Office, City Hall.

City of St. Louis. St. Louis Historic Context: Education. Modified 30 June 1996. Accessed December 6, 2006. <http://stlouis.missouri.org/government/heritage/history/education.htm>

"Edward Hempstead Was First Missouri Delegate." *St. Louis School Scrapbook*. Vol. 1 On file with Missouri Historical Society.

Longwisch, Cynthia H. *National Register of Historic Places Multiple Property Nomination, "The St. Louis, Missouri, Public Schools of William B. Ittner."* Washington D.C.: United States Department of the Interior National Park Service, 2 September 1992.

St. Louis Board of Education. *Annual Report- St. Louis Board of Education 1905-1906*. St. Louis: City of St. Louis, 1906.

*Annual Report-St. Louis Board of Education 1906-1907*. St. Louis: City of St. Louis, 1907.

*Annual Report- St. Louis Board of Education 1908-1909*. St. Louis: City of St. Louis, 1908.

Wagman, Jake. "District Details School Closings in City," *St. Louis Post Dispatch*, 14 July 2003 sec. News, p.1A.

United States Department of the Interior  
National Park Service

## National Register of Historic Places Continuation Sheet

Section number 10 Page 17

**Hempstead School**  
St. Louis, Missouri, Public Schools of William B. Ittner  
**St. Louis (Independent City), MO**

### Verbal Boundary Description

Hempstead School is located at 5872 Minerva Avenue on a lot comprised of the northern half of City Block 3823 W as follows: at the intersection of Hamilton Boulevard and Minerva Avenue proceed southeast on Minerva to Laurel Street; proceed southwest approximately 240 feet to the alley; then proceed northwest down the alley approximately 464 feet to Hamilton Boulevard; proceed northeast up Hamilton to Minerva Avenue, the point of origin.

### Boundary Justification

The selected boundaries are those historically associated with Hempstead School, including the school itself and its fenced lot.

### Photograph Key

The following information is true for all photographs:

Hempstead School  
St. Louis (Independent City), MO  
Photographer: Melinda Winchester  
Date: 29 November 2006  
Negative Location: Lafser & Associates  
2285 County Road 316  
Jackson, MO 63755

### Photo # View

- |    |   |
|----|---|
| 1  | Main Façade from northwest corner of lot      |
| 2  | Main Façade from northeast corner of lot      |
| 3  | Main entrance                                 |
| 4  | Main Façade, eastern secondary entrance       |
| 5  | Northwest corner from lot                     |
| 6  | Northwest Façade                              |
| 7  | Southwest (Rear) Façade from southwest corner |
| 8  | Addition from southeast                       |
| 9  | Southeast Façade and addition corridor        |
| 10 | Addition from southwest                       |
| 11 | Lunch Room                                    |
| 12 | Gymnasium                                     |
| 13 | Main entrance from 1 <sup>st</sup> floor      |
| 14 | Banister and handrail detail                  |
| 15 | Kindergarten room                             |
| 16 | Example of 1 <sup>st</sup> floor classroom    |
| 17 | Second Floor corridor                         |
| 18 | Example of 2 <sup>nd</sup> floor bathroom     |
| 19 | Interior doorway, Principal's Office          |



40'  
Hempstead School  
St. Louis (Independent City) MO  
Z 15  
N 4283359  
E 736273

4784

500

4283

4282

4281



















EXIT

KEEP PUSHING  
WILL OPEN IN 45 SECONDS  
OR WILL SOUND AT PANEL

KEEP PUSH  
DOOR WILL OPEN IN  
ALARM WILL SOUND

09 11 06









29 11 06





*Handwritten text on the green chalkboard:*

How many men, long as  
... ..  
... ..  
... ..  
... ..  
... ..

*Handwritten text on the blackboard:*

... ..  
... ..  
... ..  
... ..

29 11'06





29 11'06









29 11'06























CRIP

53



