

United States Department of the Interior
National Park Service

National Register of Historic Places
Registration Form

1. Name of Property

historic name Harris Teachers College
other names/site number Teachers College; Normal School; Theresa School; Audiovisual Services Building

2. Location

street & number 1517 South Theresa [n/a] not for publication
city or town St. Louis [Independent City] [n/a] vicinity
state Missouri code MO county St. Louis [Independent City] code 510 zip code 63104

3. State/Federal Agency Certification

As the designated authority under the National Historic Preservation Act, as amended, I hereby certify that this [x] nomination [] request for determination of eligibility meets the documentation standards for registering properties in the National Register of Historic Places and meets the procedural and professional requirements set forth in 36 CFR Part 60. In my opinion, the property [x] meets [] does not meet the National Register criteria. I recommend that this property be considered significant [] nationally [] statewide [x] locally. (See continuation sheet for additional comments [].)

Mark A. Miles

06/16/04

Signature of certifying official/Title Mark A. Miles/Deputy SHPO Date

Missouri Department of Natural Resources
State or Federal agency and bureau

In my opinion, the property [] meets [] does not meet the National Register criteria.
(See continuation sheet for additional comments [].)

Signature of certifying official/Title

State or Federal agency and bureau

4. National Park Service Certification

Signature of the Keeper Date of Action

I hereby certify that the property is:

- [] entered in the National Register
See continuation sheet [].
- [] determined eligible for the National Register
See continuation sheet [].
- [] determined not eligible for the National Register.
- [] removed from the National Register
- [] other, explain see continuation sheet [].

5. Classification

Ownership of Property	Category of Property	Number of Resources within Property	
		contributing	noncontributing
<input type="checkbox"/> private	<input checked="" type="checkbox"/> building(s)	1	0 building
<input checked="" type="checkbox"/> public-local	<input type="checkbox"/> district	0	0 sites
<input type="checkbox"/> public-state	<input type="checkbox"/> site	0	0 structures
<input type="checkbox"/> public-Federal	<input type="checkbox"/> structure	1	2 objects
	<input type="checkbox"/> object	2	2 total

Name of related multiple property listing.

The St. Louis, Missouri, Public Schools of William B. Ittner

Number of contributing resources previously listed in the National Register.

0

6. Function or Use

Historic Function

EDUCATION: school

Current Functions

VACANT

7. Description

Architectural Classification

Tudor Revival

see continuation sheet []

Materials

foundation Stone: Limestone
 walls Brick
 Stone: Limestone
 roof Asphalt

other _____

see continuation sheet []

NARRATIVE DESCRIPTION

See continuation sheet [x]

8. Statement of Significance

Applicable National Register Criteria

A Property is associated with events that have made a significant contribution to the broad patterns of our history

B Property is associated with the lives of persons significant in our past.

C Property embodies the distinctive characteristics of a type, period, or method of construction or represents the work of a master, or possesses high artistic values, or represents a significant and distinguishable entity whose components lack individual distinction.

D Property has yielded, or is likely to yield, information important in prehistory or history.

Criteria Considerations

Property is:

A owned by a religious institution or used for religious purposes.

B removed from its original location.

C a birthplace or grave.

D a cemetery.

E a reconstructed building, object, or structure.

F a commemorative property.

G less than 50 years of age or achieved significance within the past 50 years.

Areas of Significance

ARCHITECTURE

EDUCATION

Periods of Significance

1905 - 1949

Significant Dates

1905

Significant Person(s)

n/a

Cultural Affiliation

n/a

Architect/Builder

Ittner, William B.

Steininger Construction Co.

Narrative Statement of Significance

(Explain the significance of the property on one or more continuation sheets.)

9. Major Bibliographic References

Bibliography

(Cite the books, articles and other sources used in preparing this form on one or more continuation sheets.)

Previous documentation on file (NPS):

preliminary determination of individual listing (36CFR 67) has been requested

previously listed in the National Register

previously determined eligible by the National Register

designated a National Historic Landmark

recorded by Historic American Buildings Survey

recorded by Historic American Engineering Record

Primary location of additional data:

State Historic Preservation Office

Other State Agency

Federal Agency

Local Government

University

Other:

Name of repository: _____

USDI/NPS NRHP Registration Form
Harris Teachers College
St. Louis (Independent City), MO

10. Geographical Data

Acreage of Property approximately 1.9

UTM References

A. Zone	Easting	Northing	B. Zone	Easting	Northing
15	740 560	4278 240			
C. Zone	Easting	Northing	D. Zone	Easting	Northing

[] See continuation sheet

Verbal Boundary Description

(Describe the boundaries of the property on a continuation sheet.)

Boundary Justification

(Explain why the boundaries were selected on a continuation sheet.)

11. Form Prepared By

name/title Lynn Josse
organization Landmarks Association of St. Louis date January 8, 2004
street & number 3517A Connecticut St. telephone (314) 776-5409
city or town St. Louis state MO zip code 63118

Additional Documentation

Submit the following items with the completed form:

Continuation Sheets

Maps

A **USGS map** (7.5 or 15 minute series) indicating the property's location.

A **Sketch map** for historic districts and properties having large acreage or numerous resources.

Photographs

Representative **black and white photographs** of the property.

Additional Items

(Check with the SHPO or FPO for any additional items)

Property Owner

(Complete this item at the request of SHPO or FPO.)

name Board of Education of the City of St. Louis
street & number 801 N. 11th Street telephone (314) 231-3720
city or town St. Louis state MO zip code 63101

**United States Department of the Interior
National Park Service**

**National Register of Historic Places
Continuation Sheet**

Section 7 Page 1

Harris Teachers College
St. Louis [Independent City], Missouri
The St. Louis, Missouri Public Schools of William B. Ittner MPS

Summary

Harris Teachers College, located at 1517 S. Theresa in St. Louis, Missouri, is a three-story red brick school building designed by William B. Ittner and completed in 1905. It is nominated under the Multiple Property Submission "The St. Louis, Missouri Public Schools of William B. Ittner," approved by the Keeper of the National Register in 1992. It is a good example of the E ("Open")-Plan subtype established in the original document.

The building's façade is approximately 200 feet wide, divided into nine bays including projecting end and center bays. There are three additional objects in the resource count: a fence which appears to be original (contributing); a radio tower of unknown date (noncontributing); and concrete foundation remnants of an apparently non-historic outbuilding behind the school (noncontributing). The building is in good condition and retains both exterior and interior integrity.

Site

The Harris Teachers College property is bounded by streets on three sides and the Wyman School property to the south. Roughly 265 feet east-west and 317 feet north-south, the site is much larger than the footprint of the building. The front of the building (facing east to Theresa) is unusually formal for an Ittner landscape, continuing the terraces from the front of the Wyman School. In fact, since the Teachers College and Wyman buildings share a common fence and landscaping and are not visually separated at the front of the property, the two buildings are easily interpreted as a grouping in a common landscape. Three terraces rise from street level, with a center limestone stair ascending to the front entrance. Historic photographs show the terraces to be very crisply defined earthworks; decades of groundskeeping have rounded the angles but the ascending terrace plan is still clear. The iron fence with granite posts around the property appears in photographs taken immediately after construction of the school and is included in the resource count as a contributing object.

At the western side of the site, balustraded limestone retaining walls running parallel from the back wall of the building and along the Park Street sidewalk support the asphalt parking lot at the

**United States Department of the Interior
National Park Service**

**National Register of Historic Places
Continuation Sheet**

Section 7 Page 2

Harris Teachers College
St. Louis [Independent City], Missouri
The St. Louis, Missouri Public Schools of William B. Ittner MPS

rear of the building. The concrete foundations of a small structure (identified as a single-story "CARPR" (carport?) on 1968 Sanborn maps) are still present, and are considered a noncontributing object.

Immediately south of the building is a 370' high steel radio broadcasting tower built by the district. It is anchored to the side of the building but stands free on a separate footprint. Despite its great height, the tower does not detract from the school's visual integrity because of its open truss design, which encourages the viewer to look through rather than at it. The tower is considered a noncontributing object.

Exterior

The three-story Harris Teachers College building is constructed of red brick with burnt headers and a picturesquely random pattern of some burnt stretchers. Its nine bays add up to approximately 200 feet wide. Typical of Ittner's school designs, the façade is symmetrical, with the wider end and center bays projecting. The design fits into Ittner's general pattern of eclectic "Jacobethan" style buildings, with Tudor-inspired windows and a classical Roman entrance.

The projecting end bays and the inner three bays to either side of the entrance are similarly articulated, with Tudor-style limestone-framed window sets with stone mullions and transoms. At the inner bays, there are three windows per set. The upper stories are separated by a stone sill course; quoins at the two top stories create a common frame for each vertical set of windows, leaving a patterned brick spandrel panel between stories. The outer (first and ninth) bays are wider than the others, and project from the body of the building. Here, the first and second story windows are bumped even further forward in a shallow box bay topped by a balustrade below the third story windows. The wider bays accommodate sets of five windows each.

The center bay clearly articulates the main stairway within. The first story is the formal entrance to the building. Here double front doors are set within a wide Roman arch, framed by Doric pilasters supporting the entablature. The keystone is a sculpted head of a female warrior – likely representing one of the legions of teachers to be graduated from the institution. Above the frieze is a panel of sculpted garlanded shields. Located at the middle of the second-story level, this panel serves as a base for a tall set of windows stretching up approximately one and a half stories to the roofline, and signaling the presence of a stair hall.

A parapet wall across the front elevation is broken by balustrades over each window bank.

**United States Department of the Interior
National Park Service**

**National Register of Historic Places
Continuation Sheet**

Section 7 Page 3

Harris Teachers College
St. Louis [Independent City], Missouri
The St. Louis, Missouri Public Schools of William B. Ittner MPS

One of the most unusual features of the front elevation is the transition from landscape to building. The composition is mounted on a high limestone basement at the two outer bays. At the inside edge of the two outer bays, the basement wall projects forward as if to support a front patio at the first story level. From the street level, in fact, it appears that the school building has a generous balustraded front patio. Mounting the final flight of steps, however, it becomes clear that these are not building walls but retaining walls, and the area that appears to be a patio is filled with grass and plantings.

North and south side elevations are very similar, with four sets of windows (four windows per set) articulated in a manner similar to the inner bays of the front elevation.

The rear of the building lacks the formal articulation of the primary elevations, but it is here that the "E" plan is obvious. Windows of the main north-south corridor of each floor show between the three projections of the "E." Two bays at either end project from the building, with a classroom at the outer bay and a stair hall at the inner. For six symmetrical bays at the center of the elevation, a projecting room is articulated with window pairs that are smaller and more closely spaced than those found elsewhere in the building. At the southern end of this center projection, a square plan chimney stack rises above the roofline. Between the northern end of the center projection and the north wing is a single-story brick garage addition.

Some windows at the rear of the building are boarded. At the center projection there is evidence of an upper-story fire, date unknown. Exterior damage appears confined to windows.

Interior

Ittner's original plan featured an east-west corridor spine with classrooms and special purpose rooms along the front of the building, classrooms at either end of the corridor, and a large special-purpose room in the center wing of the "E" at each story. This basic plan is intact, as are many original materials and decorative elements.

The original marble-clad vestibule leads to a double staircase rising to either side of a wide center flight of stairs leading down to the basement. (The basement, located at grade, reads as a full story from the exterior of the building.) Straight ahead, a louvered set of openings appear to be an intake to the fan room.

United States Department of the Interior
National Park Service

National Register of Historic Places
Continuation Sheet

Section 7 Page 4

Harris Teachers College
St. Louis [Independent City], Missouri
The St. Louis, Missouri Public Schools of William B. Ittner MPS

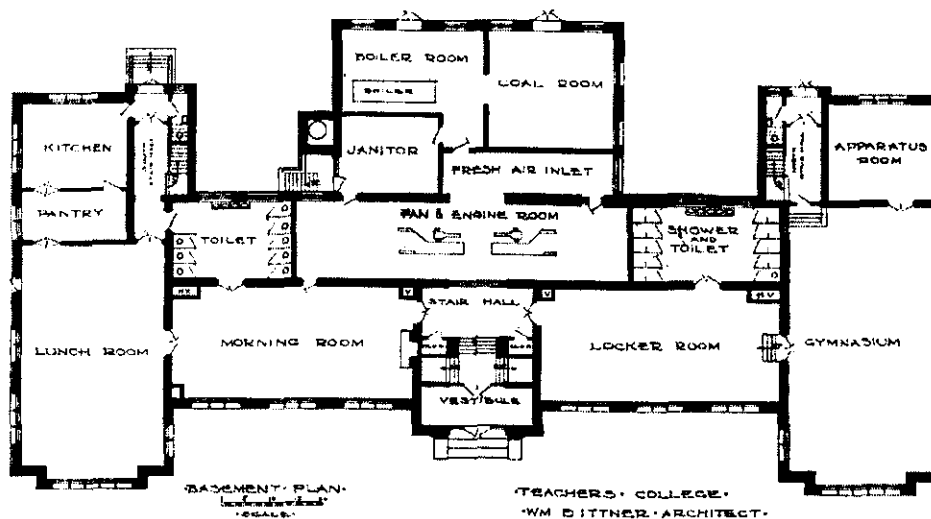


Figure 1: Basement plan. Source: 54th Annual Report of the Board of Education of the City of St. Louis

At the two upper stories, iron-railed staircases and maple-floored corridors are intact. Most classrooms exhibit some cosmetic changes including drop ceilings, carpeting, and partition walls. The principal's room, located immediately south of the main stair on the first floor, retains the fireplace shown on Ittner's plan (see photo). Built-in cabinets to either side are not shown on Ittner's plan but clearly date from the early 20th century.

At the second story, the original drawing room at the southeast wing has been divided into sound studios. There is a connection to the radio tower at this level.

The second story critique room, occupying the center rear prong of the "E" plan, is the only room that shows fire damage, particularly at the window sills and frames (see photo). Some concrete ceiling beams, visible in the historic photo reproduced in Section 8, are scorched. The original risers in this room were removed after the school's use as a teacher's college. The room is now carpeted and divided by removable partition walls.

United States Department of the Interior
National Park Service

National Register of Historic Places
Continuation Sheet

Section 7 Page 5

Harris Teachers College
St. Louis [Independent City], Missouri
The St. Louis, Missouri Public Schools of William B. Ittner MPS

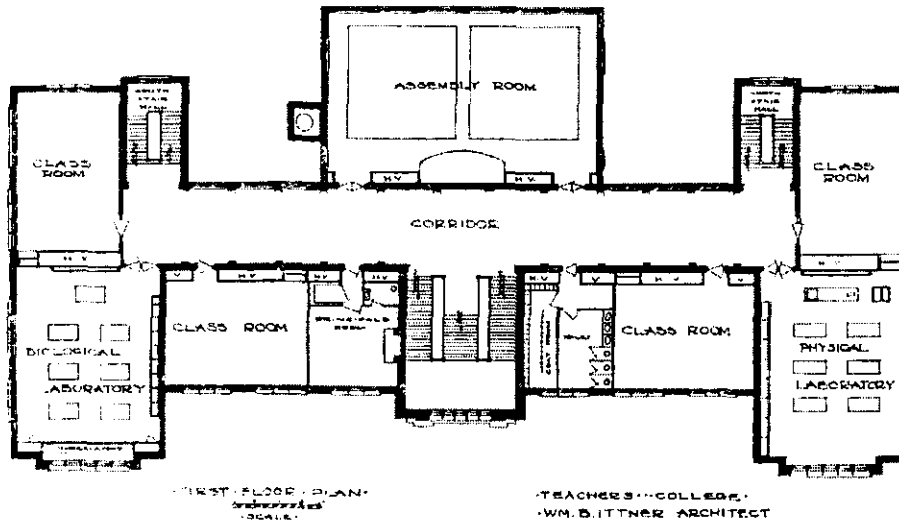


Figure 2: First floor plan. Source: 54th Annual Report of the Board of Education of the City of St. Louis

United States Department of the Interior
National Park Service

National Register of Historic Places
Continuation Sheet

Section 7 Page 6

Harris Teachers College
St. Louis [Independent City], Missouri
The St. Louis, Missouri Public Schools of William B. Ittner MPS

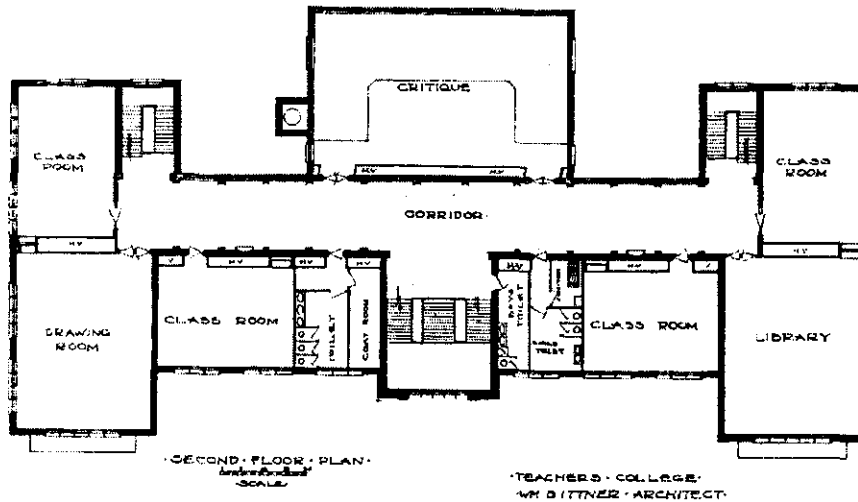


Figure 3: Second floor plan. Source: 54th Annual Report of the Board of Education of the City of St. Louis

Integrity

The exterior of the school retains excellent integrity, with only a few boarded windows and minor fire damage. The interior shows many changes made over the years to accommodate new uses as an audiovisual center and administrative building, but important elements retain integrity. Among the minor changes are some drop ceilings, carpeting, and reversible partition walls. The most important elements of Ittner's "E" plan are intact. Other decorative features such as the marble vestibule and the fireplace in the principal's room also convey the historic status of the school.

**United States Department of the Interior
National Park Service**

**National Register of Historic Places
Continuation Sheet**

Section 8 Page 7

Harris Teachers College
St. Louis [Independent City], Missouri
The St. Louis, Missouri Public Schools of William B. Ittner MPS

Summary

Harris Teachers College, located at 1517 S. Theresa in St. Louis, Missouri, is locally significant under National Register Criterion A in the area of Education and Criterion C in the area of Architecture. In the area of Architecture, the building is associated with the multiple property submission "The St. Louis, Missouri, Public Schools of William B. Ittner" (NR 1992, amended 2000), and specifically the related context statement "The Refining of the 'Open Plan' in St. Louis Public Schools, 1902 – 1910." Falling under the E ("Open")-Plan subtype, the building meets all of the registration requirements to be listed under this MPS. In addition, the school is significant in the area of Education. From its completion in 1905 until 1949 (the period of significance), the majority of white teachers in the St. Louis Public Schools were trained in this building. It is the first building designed specifically for the Teachers College, which began in 1904 as an enlargement of the Normal School program (previously held at other school buildings in the system). The property is intact inside and out, including significant landscape features.

Historic Name

For the purposes of registration, the historic name "Harris Teachers College" was selected. Although the building was known simply as the Teachers College when it opened in 1905, it was renamed for educator William Torrey Harris after his death in 1909. This name was used for the rest of the historic period (until the institution moved in 1949). The name lives on in Harris-Stowe State College, the direct descendant of both Harris Teachers College and Stowe Teachers College (a parallel institution for African-American teacher training).

Architecture

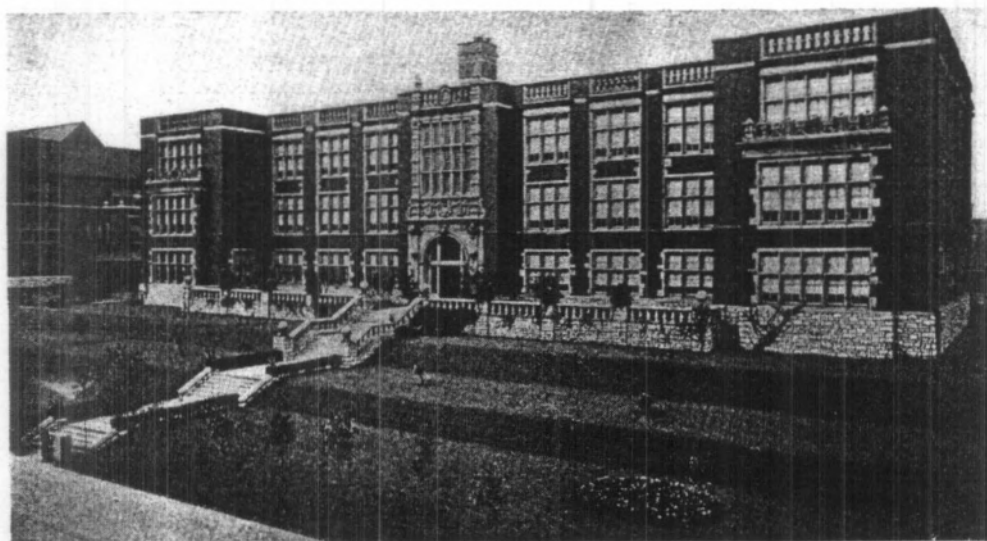
Harris Teachers College is an example of the E-plan subtype established in the multiple property document "The St. Louis, Missouri, Public Schools of William B. Ittner." The college is an important work by master architect William B. Ittner and illustrates many of the groundbreaking principles which made him the nation's most emulated school architect in the early 20th century. Completed in 1905, it is an early example of Ittner's "open plan," which placed a high value on natural light and ventilation in both classrooms and hallways.

United States Department of the Interior
National Park Service

National Register of Historic Places
Continuation Sheet

Section 8 Page 8

Harris Teachers College
St. Louis [Independent City], Missouri
The St. Louis, Missouri Public Schools of William B. Ittner MPS



THE TEACHERS COLLEGE, WYMAN DISTRICT SCHOOL, ADJOINING.

Figure 4. Historic photo, c. 1906. Source: 54th Annual Report of the Board of Education.

Although the building was designed as a teachers college, it is actually much closer in form to Ittner's open plan elementary schools than his high schools, probably because of the relatively small student body. An obvious difference is the size of the classrooms, which were designed for a variety of special uses and vary in dimension (Figures 1-3).

Harris Teachers College also illustrates the richness of surface texture and elaborate entries which distinguish Ittner's work. Here, Tudor and Classical elements are mixed with ease, particularly distinguishing the central entrance pavilion. Of particular interest are the sculpted head of a female warrior over the entrance and the shield at the top of the same bay with the entwined letters "TC". (For the first few years of its existence the school was known simply as the Teachers College.) The patterned brickwork, one of Ittner's signature elements, adds depth and interest to the walls.

With careful siting and landscaping, Ittner made St. Louis one of the few major urban centers of the early 20th century to place schools in large parklike settings. The Teachers College retains its unusually formal landscape which is unparalleled in the City.

**United States Department of the Interior
National Park Service**

**National Register of Historic Places
Continuation Sheet**

Section 8 Page 9

Harris Teachers College
St. Louis [Independent City], Missouri
The St. Louis, Missouri Public Schools of William B. Ittner MPS

In a 1987 survey by Landmarks Association of St. Louis, 47 schools by William B. Ittner were identified. Eight of these are individually listed in the National Register. Edward Wyman (adjacent to the Teachers College), Rock Spring, Horace Mann, Eliot, Jackson and Eugene Field Schools were all listed on 9/02/1992. Sumner High School was listed on 4/19/1988. Carr School was listed on 12/13/2000. All of these were listed as part of the "St. Louis, Missouri Public Schools of William B. Ittner" MPS except for Sumner High School, which is part of the "Historic and Cultural Resources of the Ville, St. Louis, Missouri" MPS.

Education

The city's first Normal School for the training of teachers was created by the Board of Education in 1857. For almost a half-century after its creation, support for the Normal School fluctuated based, in large part, on the demand for new teachers in the St. Louis Public Schools. By the early 1860s, most teachers in the St. Louis Public Schools were Normal School graduates. Indeed, there were no other normal programs west of the Mississippi and only eleven others in the United States.

For almost half a century, support for the school was strongest during teacher shortages. In a period of oversupply during the 1890s, the school was reduced to a "Normal Course" within the high school curriculum.¹ Meanwhile, as demand for African-American education grew, a separate normal school for blacks (Stowe Teachers College) was founded in 1890 at Sumner High School (the city's only high school for African-Americans for over 30 years).

The beginning of the 20th century was a period of rapid expansion for the St. Louis Public School system, and in 1902 the Board of Education took steps to ensure a permanent source of well-educated teachers. Property was purchased adjacent to Ittner's Wyman School (1900, NR 1992), and contracts were let for a new building in 1904.

With the need for qualified instructors mounting, the restructured and renamed Teachers College opened a year before its building was complete. Classes were taught in Ittner's new Yeatman High School (now Central Visual and Performing Arts High School) on Natural Bridge Road. Thirty-five women enrolled in the first semester, joined by 28

¹ Mendel E. Branom, "One Hundred Years of Teacher Education in the St. Louis Public School System." *The Saint Louis Public School Journal* v 11, no 1. September, 1958. 82.

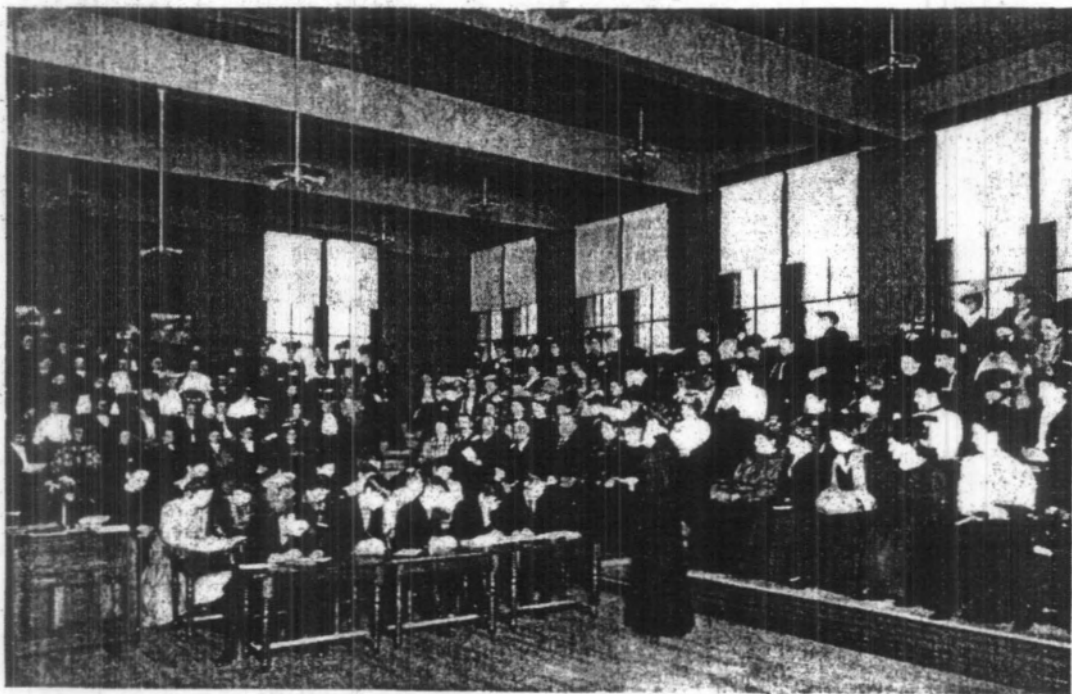
United States Department of the Interior
National Park Service

National Register of Historic Places
Continuation Sheet

Section 8 Page 10

Harris Teachers College
St. Louis [Independent City], Missouri
The St. Louis, Missouri Public Schools of William B. Ittner MPS

additional students in the second. When the college building opened in 1905, therefore, there were already 58 returning students as well as 40 new first-years. Full capacity was reached in the 1907-08 school year, with a total of 260 students enrolled in the two-year program.²



SATURDAY NORMAL CLASS AT TEACHERS COLLEGE, SHOWING THE MODEL CONDUCT OF A RECITATION FOR THE BENEFIT OF THE COLLEGE STUDENTS, APPRENTICE AND OTHER TEACHERS

Figure 5: Interior photo of critique c. 1906. Source: 54th Annual Report of the St. Louis Board of Education.

Entrance requirements to the new institution were strict. Enrollment was only open to high school graduates, preferably those with classical or scientific studies. A "satisfactory medical examination" was also required.³ Coursework included History of Education, Pedagogy and Methods of Teaching, School Hygiene, Penmanship and

² 54th Annual Report of the Board of Education of the City of St. Louis, Missouri, for the Year ending June 30, 1908. p. 225.

³ 51st Annual Report of the Board of Education of the City of St. Louis, Missouri, for the Year ending June 30, 1905. p. 168.

**United States Department of the Interior
National Park Service**

**National Register of Historic Places
Continuation Sheet**

Section 8 Page 11

Harris Teachers College
St. Louis [Independent City], Missouri
The St. Louis, Missouri Public Schools of William B. Ittner MPS

Blackboard Work, Music, Psychology and Child Study. After a one-year apprenticeship in the classroom, graduates would be eligible to apply for positions in the schools.

Another important feature of the Teachers College was the introduction in 1905 of extension courses for public school teachers. Now considered the beginning of teacher in-service in St. Louis, the first year's enrollment for these voluntary classes was 383 pupils.

The school was renamed in honor of educator William Torrey Harris (superintendent of the St. Louis Public Schools and later U. S. Commissioner of Education) after his death in 1909. An important milestone was reached in 1920, when the school became a four-year undergraduate institution conferring the Bachelor of Arts in Education degree. Later the school added a Junior College Division, which offered a general liberal arts course as well as pre-professional programs. During World War II, classes were offered to prepare recruits for induction into the armed forces.⁴

For decades, the Saint Louis Public School system produced the majority of its own teachers through the Teachers College program. Its graduates, therefore, shaped the education of the majority of St. Louis' public school students through the first half of the 20th century.

Integrity

Harris Teachers College retains high exterior integrity, with few significant alterations. Most notable, the addition of a single-story garage and anchoring of an adjacent radio tower alter two of the secondary elevations. There is also some fire damage at the rear.

The interior also retains integrity, with many significant features conveying the building's function as a school. The original plan, with its arrangement of intact hallways, stairs, and windows, perfectly conveys the E-plan for which Ittner was known.

⁴ Untitled brochure c. 1943. St. Louis Public Library Art Department.

**United States Department of the Interior
National Park Service**

**National Register of Historic Places
Continuation Sheet**

Section 9 - 10 Page 12

Harris Teachers College
St. Louis [Independent City], Missouri
The St. Louis, Missouri Public Schools of William B. Ittner MPS

Bibliography

Sources consulted in addition to those cited in "The St. Louis, Missouri, Public Schools of William B. Ittner" MPS:

Branom, Mendel E. "One Hundred Years of Teacher Education in the St. Louis Public School System." *The Saint Louis Public School Journal* v 11, no 1. September, 1958.

Untitled brochure on Harris Teachers College c. 1943. St. Louis Public Library Art Department.

Verbal Boundary Description

In the City of St. Louis, Missouri, located in City Block 1280: Compton Hill Addition Block 9 lots 1-24.

Boundary Justification

The proposed boundaries are those historically associated with the school. The property is bounded by streets on three sides and another school to the south.

0
9
4
1



U.S. DEPARTMENT OF THE INTERIOR
U.S. GEOLOGICAL SURVEY



90°15' 38°37'30" 740°00'E 741 900 000 FEET (MO EAST)

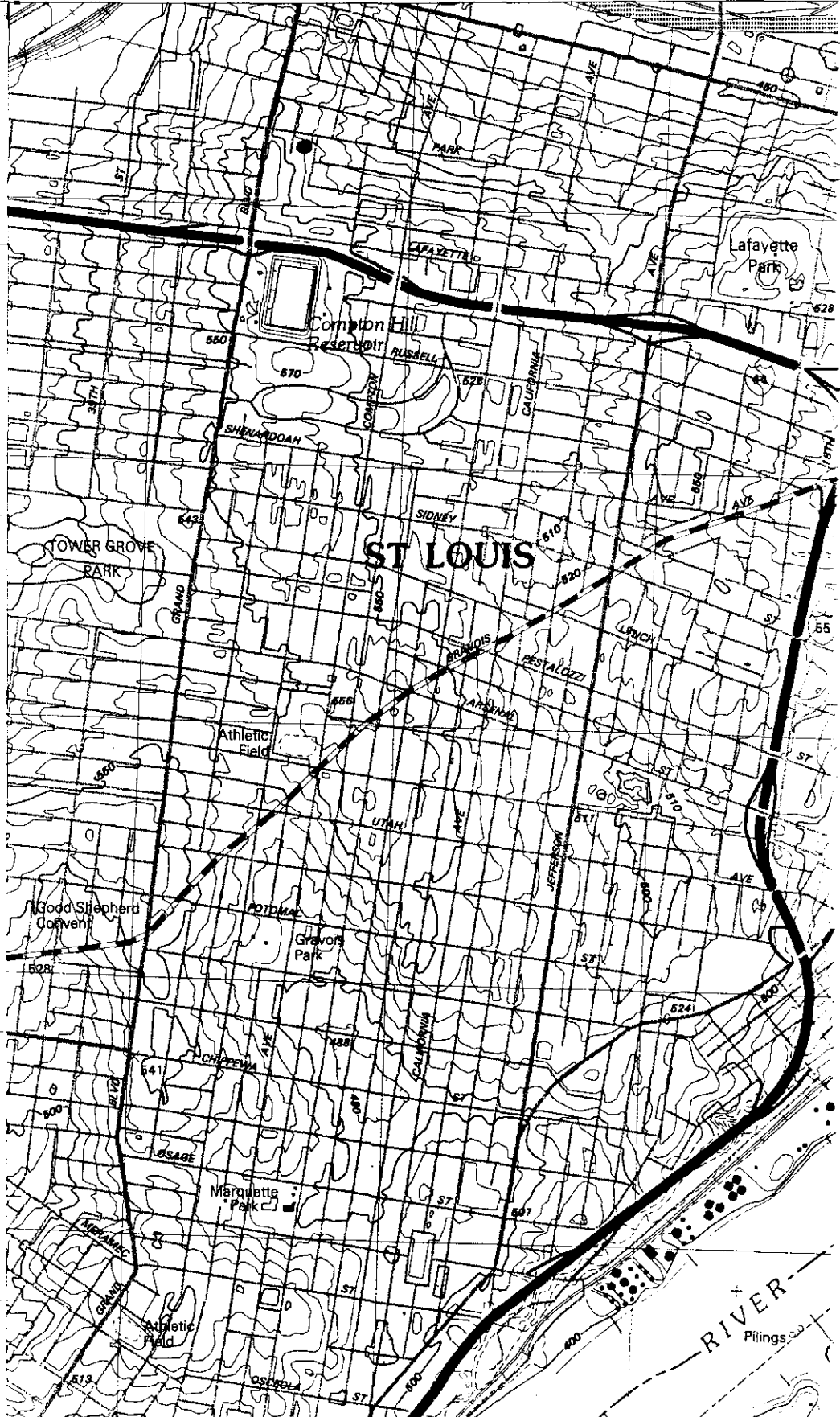
Harris
Teachers
College

The St Louis
Missouri
Public
Schools of
William E.
Ittner (MPS)

St. Louis
1 010 000 FEET
DIMENSION (MO EAST)
MO

Zone E

Easting
740560
North
4278240



1 010 000 FEET DIMENSION (MO EAST)

Harris Teachers College

St. Louis [Independent City], MO

Lynn Josse

11-2003

Landmarks Association of St. Louis

Camera facing SW

#1



Harris Teachers College
St Louis [Independent City], MO
Lynn Josse
11-2003
Landmarks Assoc. of St. Louis
Camera facing NW
#2



Harris Teachers College

St Louis [Independent City], MO

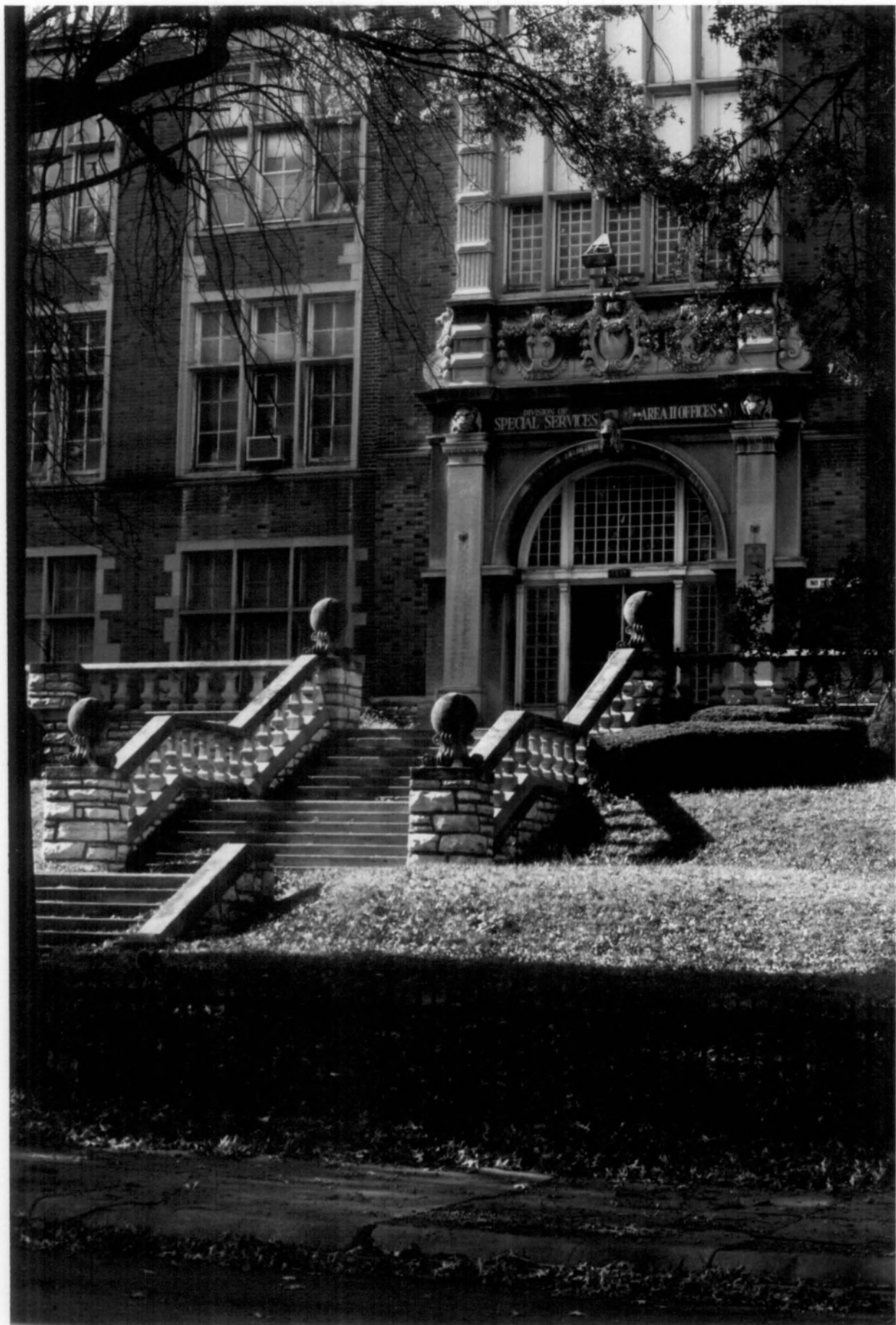
Gary Tetley

11-2003

Landmarks Assoc. of St. Louis

camera facing W/SW

#3



Harris Teachers College
St Louis [Independent City], MO

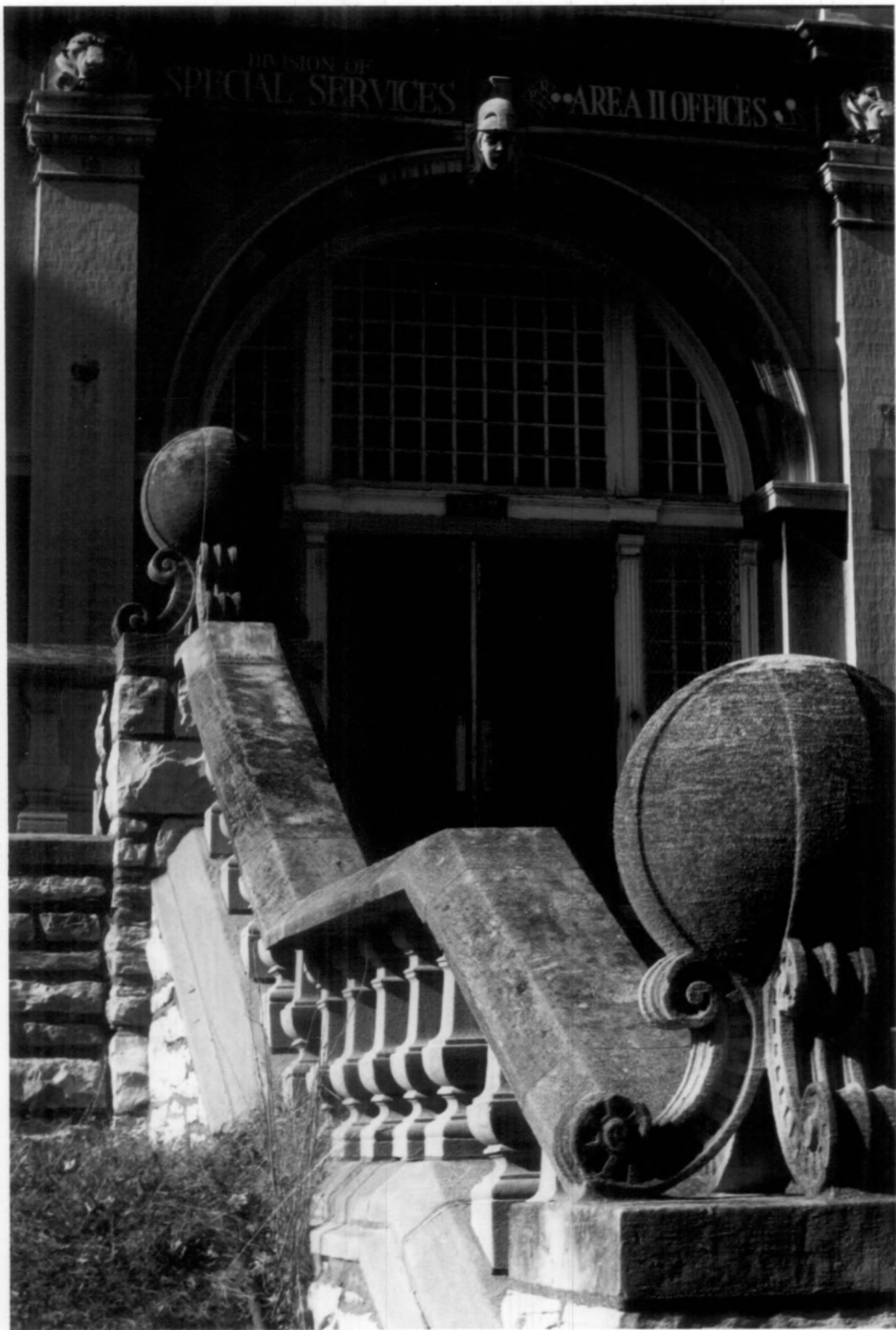
Gary Tetley

11-2003

Landmarks Assoc. of St. Louis

Camera facing W/NW

#4



Harris Teachers College
St. Louis [Independent City], MO

Lynn Josse

11-2003

Landmarks Assoc. of St. Louis

camera facing NE

#5



Harris Teachers College

The St. Louis, Missouri, Public Schools of

William B. Itner

St. Louis [Independent City], MO

Lynn Joss

3/2004

Landmarks Association of St. Louis

entry - camera facing ~~is~~ S

#6



Harris Teachers College

The St. Louis, Missouri, Public Schools of

William B. Htner

St Louis [Independent City], Missouri

3/2004

Lynn Jasse

Landmarks Assoc of St. Louis
camera facing N in First Floor Corridor

#7



Harris Teachers College

§ The St Louis, Missouri, Public Schools of
William B Ittner MPS

St. Louis [Independent City], MO

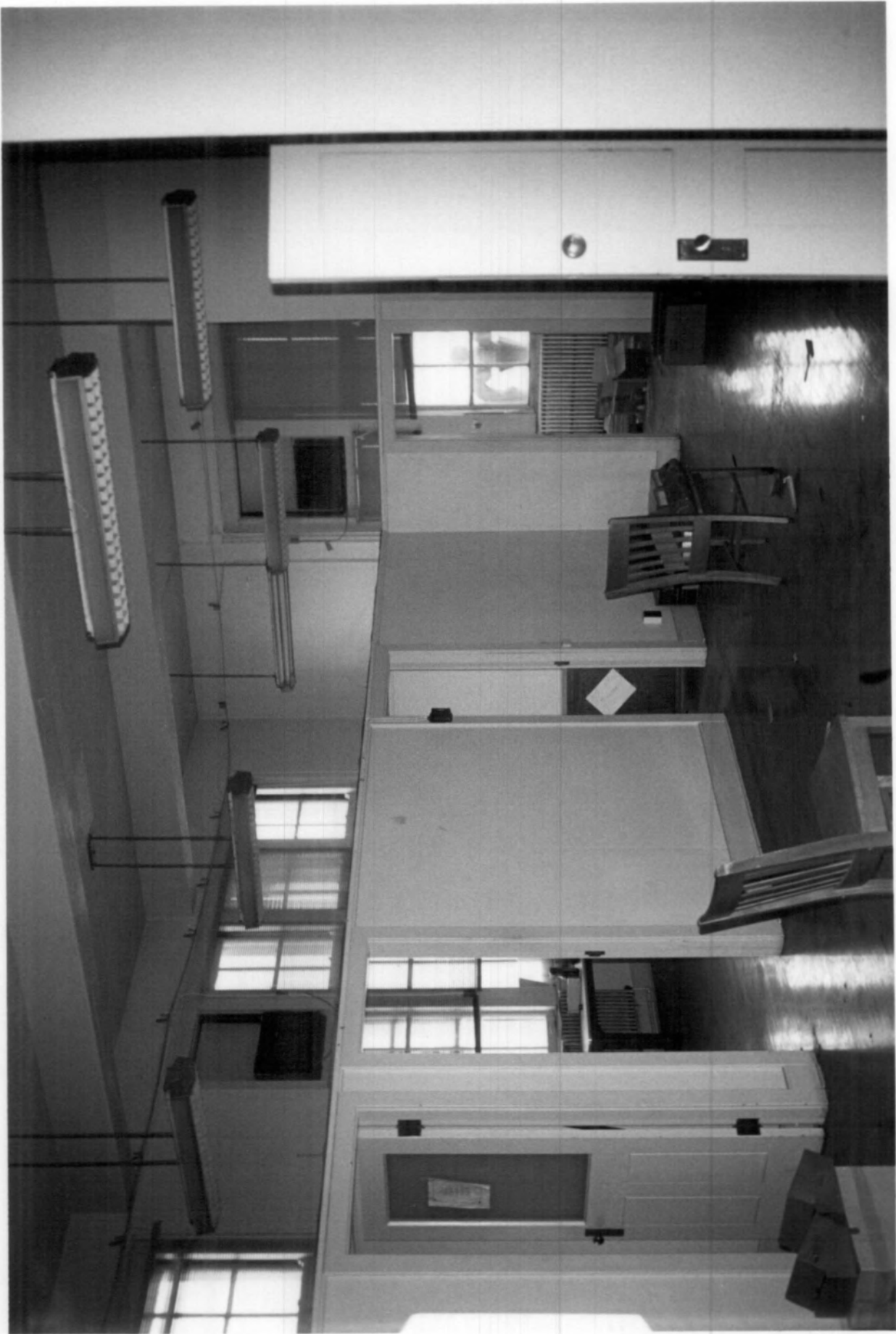
Lynn Josse

3/2004

Landmarks Assoc. of St. Louis

Classroom, camera facing NE

#8



Harris Teachers College

The St Louis, Missouri, Public Schools of

William B Ittner MPS

St. Louis [Independent City], MO

Lynn Josse

3/2004

Landmarks Assoc. of St. Louis

Principal's Room - camera facing N

#9



Harris Teachers College

The St Louis, Missouri, Public Schools of
William B. Ittner

St. Louis [Independent City], MO

Lynn Josse

3/2004

Landmarks Assoc. of St. Louis

Fire damage - camera facing SW

#10

