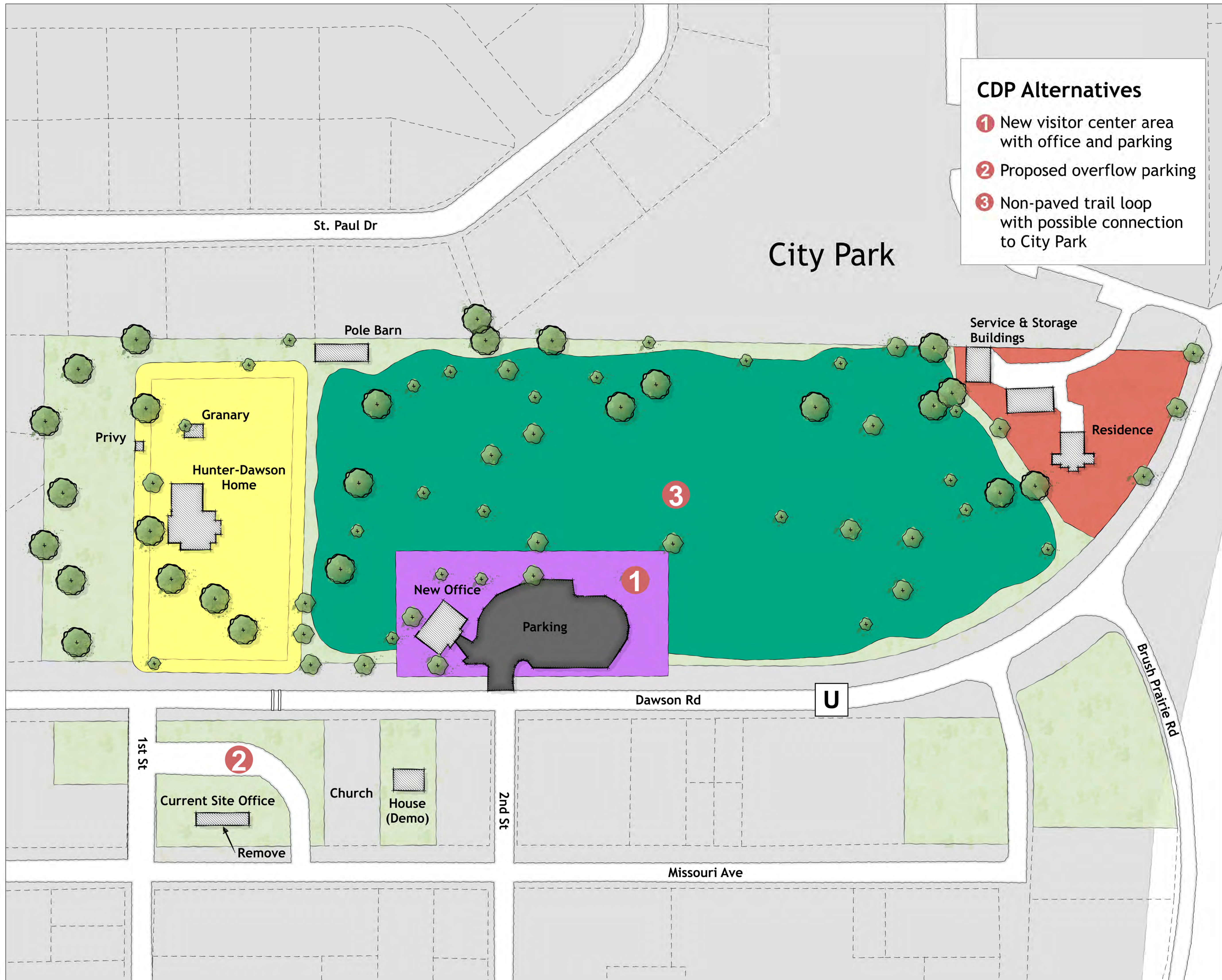


HUNTER-DAWSON STATE HISTORIC SITE

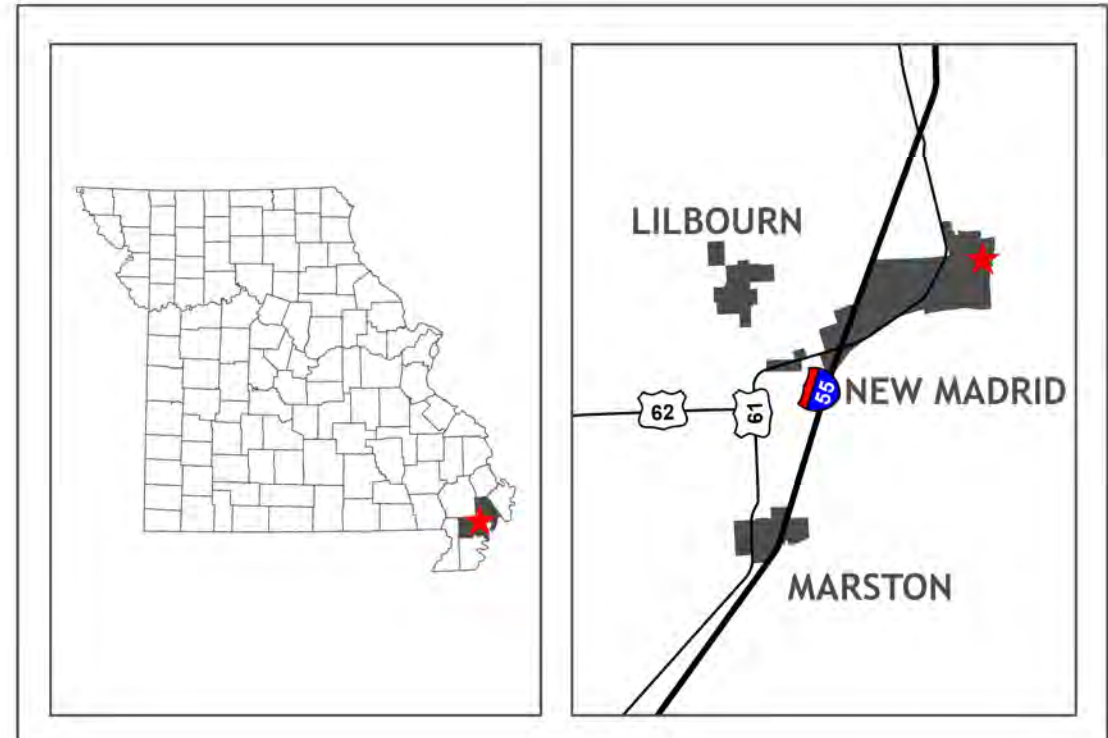
Projected Coordinate System:
NAD 1983, UTM Zone 15N
Contour Interval: 20 Feet
Absolute Scale: 1:900



- ### CDP Alternatives
- 1 New visitor center area with office and parking
 - 2 Proposed overflow parking
 - 3 Non-paved trail loop with possible connection to City Park



- Tree
- Fence
- Structure
- Visitor Center Area
- Service Area
- Trail Area
- Interpretive Area
- Hunter-Dawson SHS
- Parcel
- City of New Madrid



Although the data in this data set have been compiled by the Missouri Department of Natural Resources, no warranty, expressed or implied, is made by the Department as to the accuracy of the data and related materials. The act of distribution shall not constitute any such warranty, and no responsibility is assumed by the Department in the use of these data or related materials.