

United States Department of the Interior  
National Park Service

National Register of Historic Places  
Registration Form

1. Name of Property

historic name Greenfield Opera House Building

other names/site number Greenfield Opry House

2. Location

street & number Water Street (southwest corner of the square) [ n/a ] not for publication

city or town Greenfield [ n/a ] vicinity

state Missouri code MO county Dade code 057 zip code 65661

3. State/Federal Agency Certification

As the designated authority under the National Historic Preservation Act, as amended, I hereby certify that this  
[ x ] nomination [ ] request for determination of eligibility meets the documentation standards for registering properties in the  
National Register of Historic Places and meets the procedural and professional requirements set forth in 36 CFR Part 60. In my  
opinion, the property [ x ] meets [ ] does not meet the National Register criteria. I recommend that this property be considered  
significant  
[ ] nationally [ ] statewide [ x ] locally.  
( See continuation sheet for additional comments [ ].)

Signature of certifying official/Title Clare F. Blackwell/Deputy SHPO Date 2 Nov. 98

Missouri Department of Natural Resources  
State or Federal agency and bureau

In my opinion, the property [ ] meets [ ] does not meet the National Register criteria.  
( See continuation sheet for additional comments [ ].)

Signature of certifying official/Title

State or Federal agency and bureau

4. National Park Service Certification

I hereby certify that the property is:

Signature of the Keeper

Date

[ ] entered in the National Register  
See continuation sheet [ ].

\_\_\_\_\_

[ ] determined eligible for the  
National Register  
See continuation sheet [ ].

\_\_\_\_\_

[ ] determined not eligible for the  
National Register.

\_\_\_\_\_

[ ] removed from the  
National Register

\_\_\_\_\_

[ ] other, explain  
See continuation sheet [ ].

\_\_\_\_\_



**8. Statement of Significance**

**Applicable National Register Criteria**

**A** Property is associated with events that have made a significant contribution to the broad patterns of our history

**B** Property is associated with the lives of persons significant in our past.

**C** Property embodies the distinctive characteristics of a type, period, or method of construction or represents the work of a master, or possesses high artistic values, or represents a significant and distinguishable entity whose components lack individual distinction.

**D** Property has yielded, or is likely to yield, information important in prehistory or history.

**Criteria Considerations**

Property is:

**A** owned by a religious institution or used for religious purposes.

**B** removed from its original location.

**C** a birthplace or grave.

**D** a cemetery.

**E** a reconstructed building, object, or structure.

**F** a commemorative property.

**G** less than 50 years of age or achieved significance within the past 50 years.

**Areas of Significance**

Entertainment/Recreation

Architecture

**Periods of Significance**

1888-1921

**Significant Dates**

n/a

**Significant Person(s)**

n/a

**Cultural Affiliation**

n/a

**Architect/Builder**

Foley, W.E. - architect

McReynolds, W.B. & Griggs, L.J. -builders

**Narrative Statement of Significance**

(Explain the significance of the property on one or more continuation sheets.)

**9. Major Bibliographic References**

**Bibliography**

(Cite the books, articles and other sources used in preparing this form on one or more continuation sheets.)

**Previous documentation on file (NPS):**

preliminary determination of individual listing (36 CFR 67) has been requested

previously listed in the National Register

previously determined eligible by the National Register

designated a National Historic Landmark

recorded by Historic American Buildings Survey

# \_\_\_\_\_

recorded by Historic American Engineering Record

# \_\_\_\_\_

**Primary location of additional data:**

State Historic Preservation Office

Other State Agency

Federal Agency

Local Government

University

Other:

Name of repository: \_\_\_\_\_

**10. Geographical Data**

Acreeage of Property less than 1

**UTM References**

A. Zone	Easting	Northing	B. Zone	Easting	Northing
15	425680	4140080			

C. Zone	Easting	Northing	D. Zone	Easting	Northing
---------	---------	----------	---------	---------	----------

[ ] See continuation sheet

**Verbal Boundary Description**

(Describe the boundaries of the property on a continuation sheet.)

**Boundary Justification**

(Explain why the boundaries were selected on a continuation sheet.)

**11. Form Prepared By**

name/title Becky L. Snider  
organization n/a date August 24, 1998  
street & number 1801 Sunset Drive telephone 573-443-3241  
city or town Columbia state Missouri zip code 65203

**Additional Documentation**

Submit the following items with the completed form:

**Continuation Sheets**

**Maps**

A USGS map (7.5 or 15 minute series) indicating the property's location.

A Sketch map for historic districts and properties having large acreage or numerous resources.

**Photographs**

Representative black and white photographs of the property.

**Additional Items**

(Check with the SHPO or FPO for any additional items)

**Property Owner**

(Complete this item at the request of SHPO or FPO.)

name Greenfield Opry House Corporation c/o Janet & John McClanahan  
street & number RR 2, Box 40 Hwy. 39 telephone 417-637-2225  
city or town Greenfield state Missouri zip code 65661

National Register of Historic Places  
Continuation Sheet

Section 7 Page 1

**Greenfield Opera House Building**  
Dade County, Missouri

---

**Summary:**

The Greenfield Opera House is located on the Southwest side of the square at the intersection of Water Street and Allison Street in Greenfield, Dade County, Missouri. Constructed in 1887-1888, the three-story brick building was built as a multi-use facility comprised of first floor storefronts, a second floor opera house, and a third floor lodge room. The building itself is an architectural gem. Its size and elaborate facade commands attention on the square despite the presence of the larger Dade County Courthouse at the center of the square. Moreover, the building has had only minor alterations over its lifetime. The opera house itself, which is still in use today, is one of the very few nineteenth century opera houses left in Missouri. In fact, it may be the only nineteenth century second story opera house in operation in Missouri today. Although the Greenfield Opera House Building is surrounded by other historic buildings including the Dade County Courthouse, its size, design, and history make it the most significant building on the Greenfield square.

**Elaboration:**

The Greenfield Opera House Building is located in the heart of the downtown business district on the Southwest corner of the public square in Greenfield, Missouri. It is a three story multiple-entry brick building with a Late-Victorian-Eclectic facade.

The opera house building is in plan a 67'x84' rectangular block. It sits on a stone foundation, has red brick bearing walls and a pressed metal and cast iron ornamented facade. The first floor of the building contains three storefronts. The second floor and part of the third floor of the building is dedicated to the opera house. The rest of the third floor is taken up by a room originally used as a lodge room and ballroom. At the rear of the building, a small single-story brick and frame addition which abuts the center commercial space and was added in the early twentieth century still exists.

The primary facade of the building is oriented towards the North and its secondary facade faces the West. The South facade of the building faces the alley. On the east side, the opera house building joins the other buildings on the block. Although several of the decorative features and the original awning are missing, the original primary facade is essentially intact. (See Illustration No. 1) This facade is divided into three nearly identical bays divided by brick pilasters. On the first floor, all three of the original commercial shopfronts have been preserved. These shopfronts retain their original doors as well as their glass and wooden display windows.

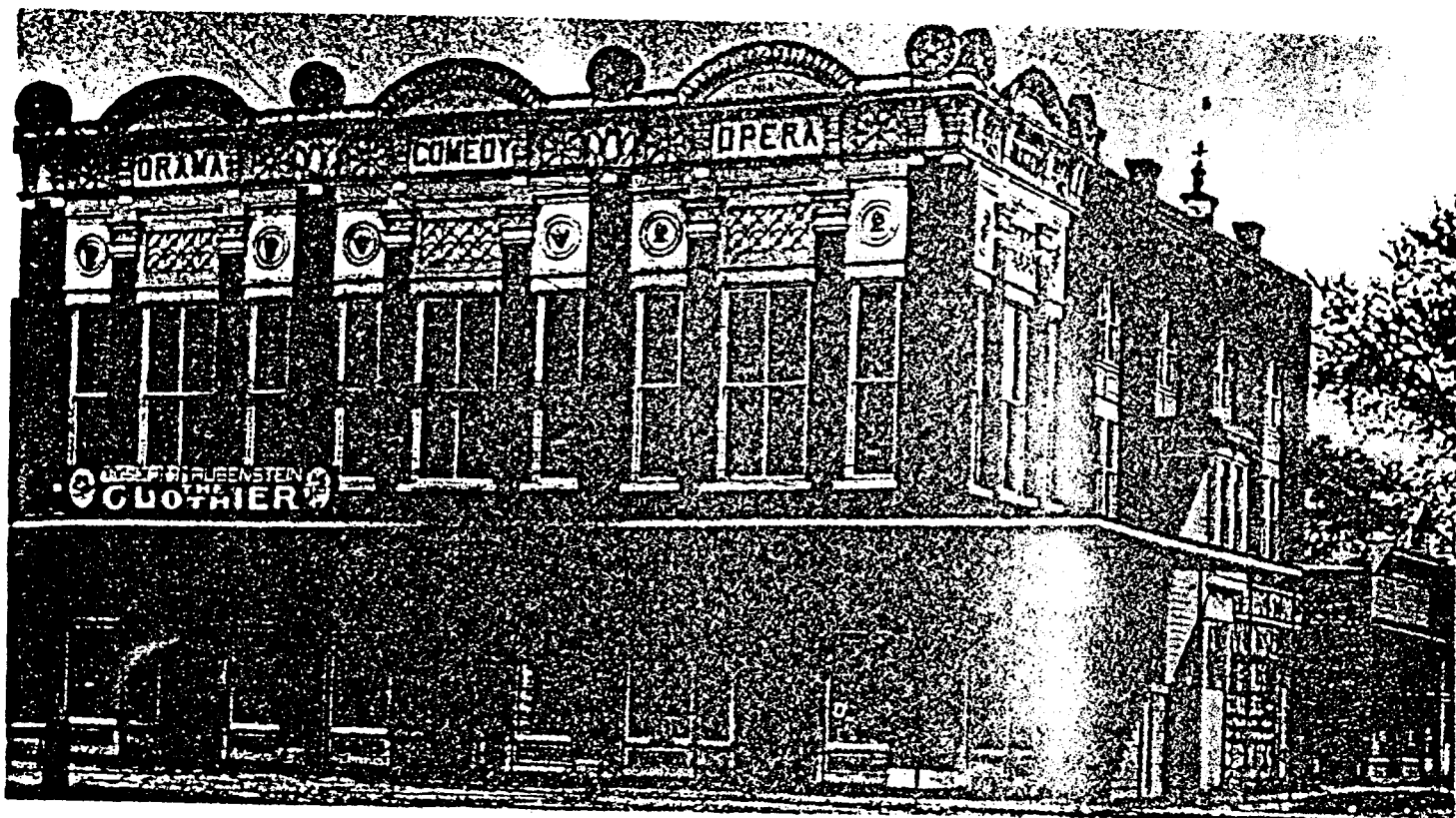
The highly decorated upper part of the primary facade is also essential unchanged. Wide brick pilasters with pressed metal capitals continue from the first floor and divide the upper part of

United States Department of the Interior  
National Park Service  
National Register of Historic Places  
Continuation Sheet

Greenfield Opera House Building  
Dade County, Missouri

Section 7 Page 2

Illustration No. 1



Historic Photo of the Greenfield Opera House from A Look at Dade County, Missouri by John K. Hulston.

United States Department of the Interior  
National Park Service  
National Register of Historic Places  
Continuation Sheet

Section 7 Page 3

Greenfield Opera House Building  
Dade County, Missouri

the facade into three bays while smaller pilasters, also topped with pressed metal capitals, separate each bay's three tall windows - a center 2/2 window flanked by two 1/1 windows. The center windows are crowned with pressed metal architraves and cast iron cameo masks cap the two side windows. The words "DRAMA," "COMEDY," and "OPERA," spelled out along the cornice, one word in each bay, still advertise the second story's function and further delineate the three bay structure. With the exception of one of the cornice arches, the elaborate cornice that caps the facade also has survived. It is decorated with pressed metal arches, medallions, brackets and pilaster capitals.

Although the original pressed metal cornice and exterior stairwell have been lost and the windows have been boarded up, the secondary facade on the West side of the building still retains an original storefront entrance on the first floor and much of its original structure. The ornate decoration of the primary facade continues the width of one bay around the corner onto the secondary facade on the West side of the building. A single storefront provides a second entrance to the corner commercial space on the first floor. On the upper story, the tall windows, brick pilasters and detailed cornice containing the word "TRAGEDY" mimic the primary facade. However, recently, due to the deterioration of the cornice on this side of the building, the majority of it has been covered over. The rest of the secondary facade is simpler yet no less elegant than the primary facade. The frames of the four large arched windows which extend from the second floor up to the third floor lodge rooms still are intact behind the plywood that now covers them.

The first floor of the building is divided into three equally sized commercial spaces measuring approximately 21' wide by 80' long. (See Illustration No. 2) Two of the three commercial spaces are still used for retail purposes. The third shopfront currently is used for storage. In addition to their original shopfronts, all three spaces still have their original pressed metal ceilings and cornices.

The second floor of the building may be reached by either of the two staircases on the West side of the building. At the Southwest corner of the building, an original interior staircase leads to the second floor and continues to the third floor. In addition, an exterior staircase in the middle of the building's West facade leads to the other second story entrance. Although this staircase was constructed in the late 1980's, it is located in the same position as the original covered exterior staircase.

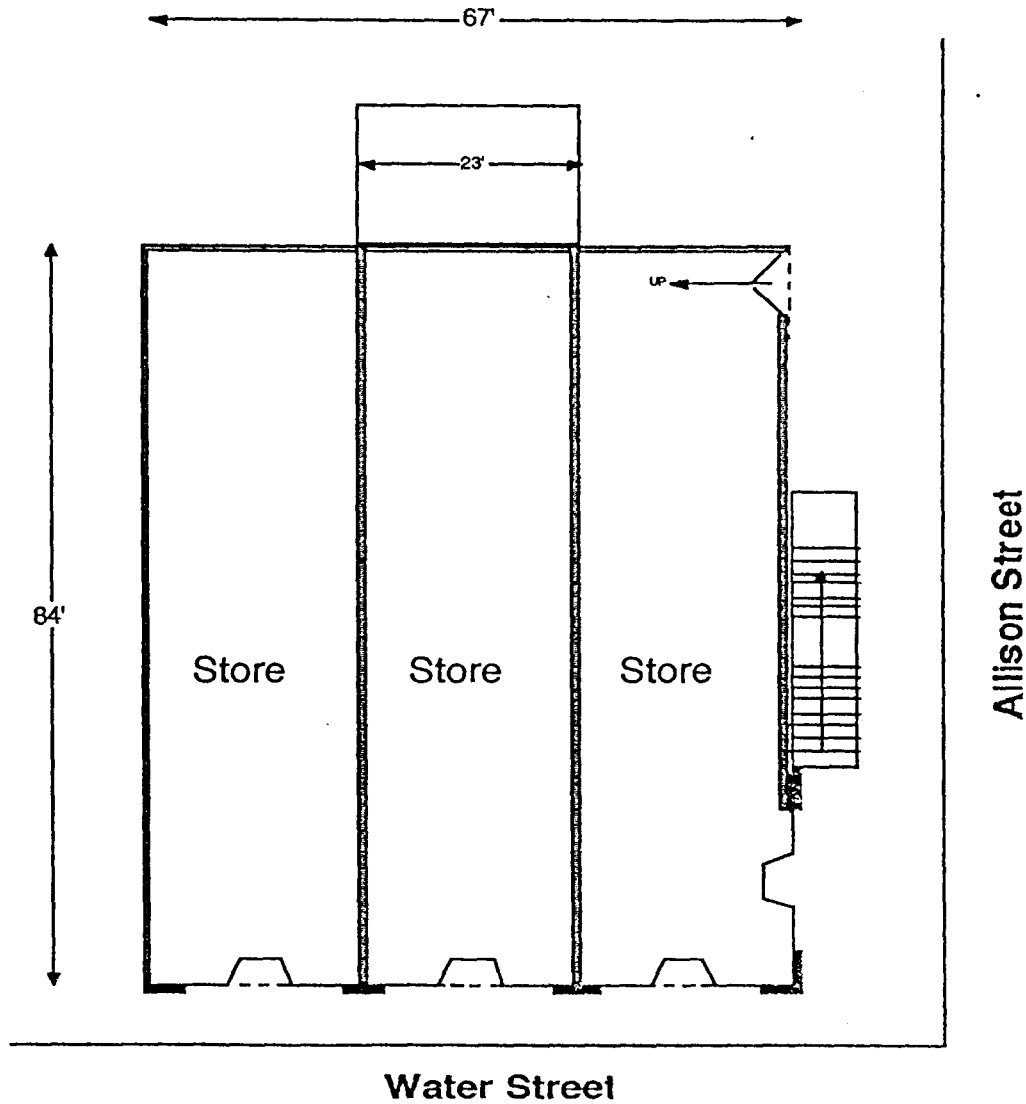
The opera house stage and auditorium occupy the majority of the second floor. (See

United States Department of the Interior  
National Park Service  
National Register of Historic Places  
Continuation Sheet

Section 7 Page 4

Greenfield Opera House Building  
Dade County, Missouri

Illustration No. 2



Greenfield Opera House Building  
First Floor Plan

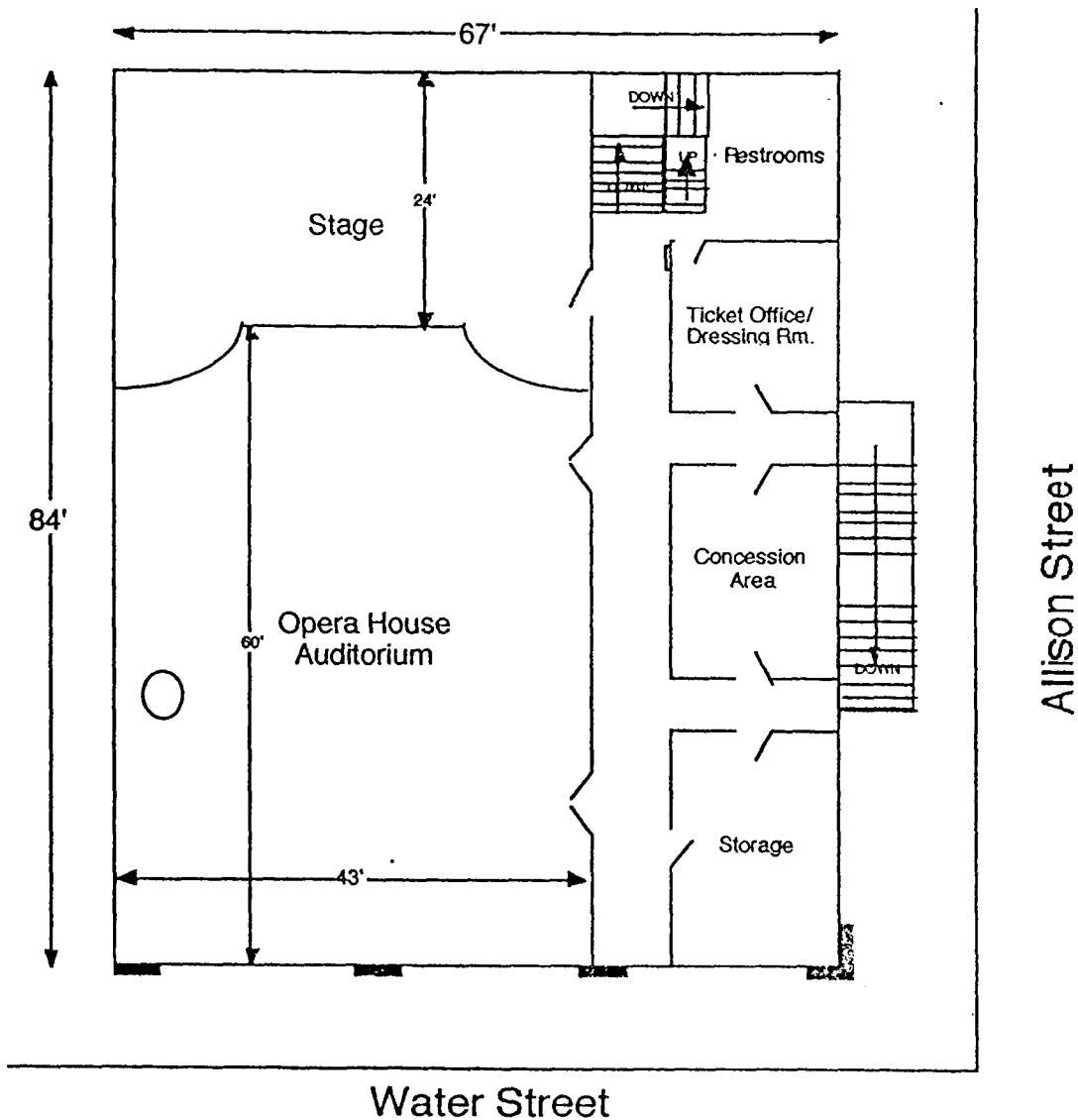


United States Department of the Interior  
National Park Service  
National Register of Historic Places  
Continuation Sheet

Greenfield Opera House Building  
Dade County, Missouri

Section 7 Page 5

Illustration No. 3



Greenfield Opera House Building  
Second Floor Plan

United States Department of the Interior  
National Park Service  
National Register of Historic Places  
Continuation Sheet

Section 7 Page 6

**Greenfield Opera House Building**  
Dade County, Missouri

Illustration No. 3 ) The auditorium measures approximately 43' x 60' and the stage is 43' wide by 24' deep. A 6' wide corridor runs the length of the building and separates the auditorium and stage from several smaller rooms. To the East, two sets of large swinging double doors provide entrances to the auditorium from the corridor and a single door leads backstage. To the West, tall single doors with transoms lead from the corridor into the smaller rooms and a bisecting corridor leads to the exterior staircase. Over the years, these smaller rooms have been used for a variety of purposes including office spaces and living quarters. Today, these rooms are used as restrooms, dressing rooms and a concession area. At the South end of the corridor, the main staircase leads down to the street level and also continues up to the third floor.

The interiors of the second story rooms, stage and auditorium are remarkably intact. In the smaller rooms and the hallway, much of the original highly patterned Victorian wallpaper and ceiling paper still exists although it is faded and peeling. The original doors, trim, hardware and lighting fixtures have also been preserved. Furthermore, graffiti dating back to 1889 can be found carved into the plaster of the corridor walls. The opera house itself is also virtually intact. In the auditorium, the original wainscoting, flooring, trim, doors, hardware, cast-iron stove, and some original auditorium seating still remain. The original rectangular proscenium arch and curved side alcoves still separate the auditorium from the stage, and the stage floor is also original. However, the two-story dressing rooms which were contained in the side alcoves and the scenery grooves have been removed.

The third floor is divided into three rooms, a long rectangular main room measuring approximately 20' wide by 40' long, a smaller room on the South end of the building, and a storage room on the North end accessed by a short ladder. (See Illustration No. 4) Many of the decorative features of the third floor rooms including original wallpaper, millwork and arched windows also still exist. These rooms were originally used as lodge rooms and as a ballroom. Today, these rooms are used for costume storage.

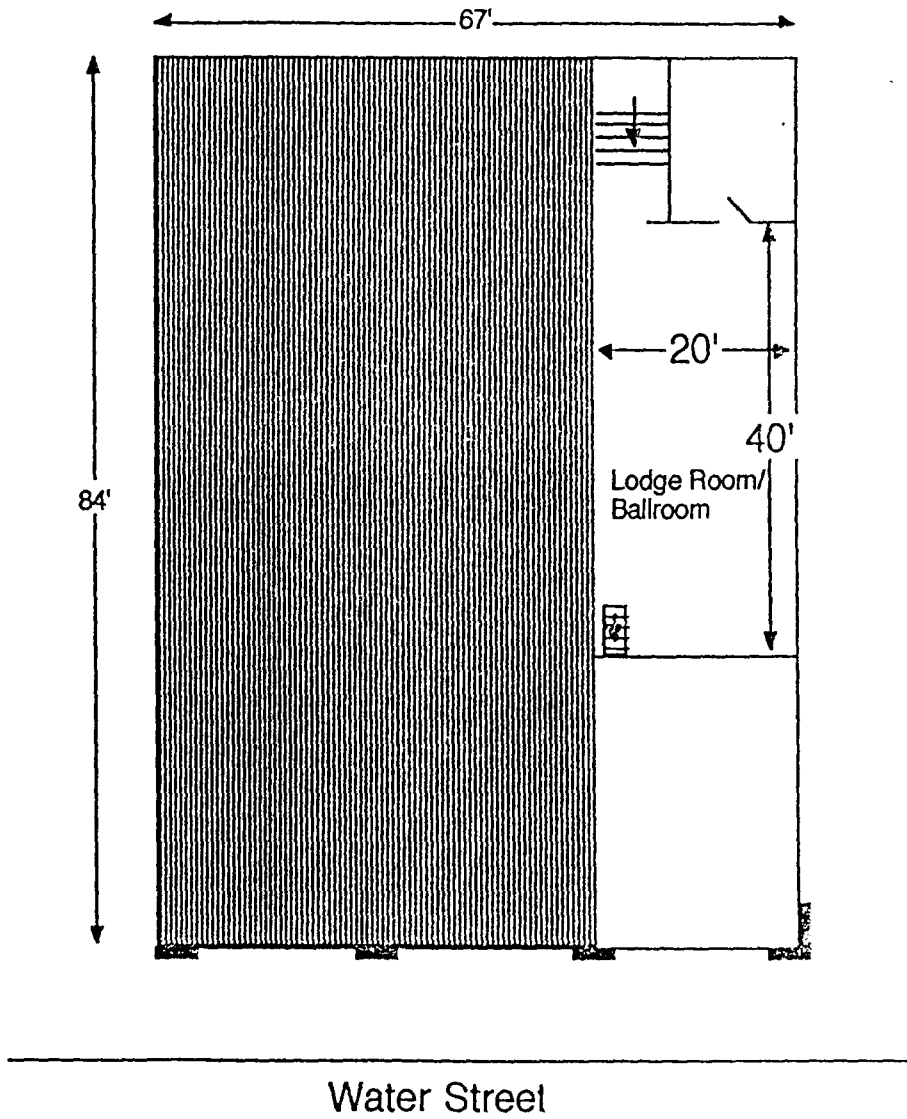
With the exception of the missing awning and cornice features and the boarded-up windows, the Greenfield Opera House Building is a remarkably historically intact building and is in fairly good condition considering the years of neglect and disuse the building has been subject to over the years. Within the past ten years the building has had new mechanical systems installed and has had bathrooms installed. More recently, the building has been tuck pointed and repainted, the roof has been repaired, and the ceilings and walls in the auditorium have been replastered.

United States Department of the Interior  
National Park Service  
National Register of Historic Places  
Continuation Sheet

Section 7 Page 7

Greenfield Opera House Building  
Dade County, Missouri

Illustration No. 4



Greenfield Opera House Building  
Third Floor Plan

United States Department of the Interior  
National Park Service  
National Register of Historic Places  
Continuation Sheet

Greenfield Opera House Building  
Dade County, Missouri

Section 8 Page 8

### Summary

The Greenfield Opera House Building in Greenfield, Missouri is significant under Criteria A and C in the areas of ENTERTAINMENT/RECREATION and ARCHITECTURE. From its opening until the early 1920's and again recently, the Greenfield Opera House Building has served as a meeting place and entertainment center for the citizens of Greenfield and the surrounding areas. It has been used as a performance space for traveling theatrical companies as well as for productions by local talent, and as the site of many graduation ceremonies and roller skating parties. In addition, in 1919, the orphan train stopped in Greenfield and several orphans met their new families on the stage of the opera house. In the early 1920's when the courthouse was condemned, the second floor was used as a temporary courthouse. The third floor rooms were used through the years for lodge meetings and dances for Greenfield's African-American population.

The Greenfield Opera House is significant in the area of architecture as a rare example of an extant nineteenth century second floor opera house in Missouri and as the only opera house ever constructed in Greenfield, Missouri. Although many towns throughout Missouri had a second floor opera house in the late nineteenth and early twentieth century, only a few continue to exist as performance facilities today. Furthermore, the Greenfield Opera House, the work of Springfield architect, W. E. Foley, is unique in the town of Greenfield for its size and flamboyant exterior ornamentation.

The theaters built in nineteenth-century America's cities and towns were the chief repositories of their communities hopes and dreams. Each town's aspirations to deserve its spot on the map were caught up with the scale and grandeur of their public buildings, and theaters were the most prominent emblem of local pride. The patrons of each newly built entertainment venue along the fringes of nineteenth-century America, were determined to be as prosperous and, eventually, as culturally sophisticated as anyone else, in this country or in Europe or Asia.<sup>1</sup>

On February 8, 1887, an article in the Greenfield Vedette announced the opening of the Ash Grove Opera House. The author of the article goes on to inquire as to when Greenfield will have its own opera house. On June 2, 1887, the Vedette announced the organization of a "joint stock company for the purposes of building three good business rooms with a town hall overhead."<sup>2</sup> Shortly thereafter, several old houses were moved from the Southwest corner of the square and the excavation for the opera house building foundation was begun.

<sup>1</sup>David Naylor and Joan Dillon American Theatres: Performance Halls of the Nineteenth Century (New York: John Wiley & Sons, 1997), p.14.

<sup>2</sup>Greenfield Vedette, 2 June 1887, p.3 col. 3.

United States Department of the Interior  
National Park Service  
National Register of Historic Places  
Continuation Sheet

Greenfield Opera House Building  
Dade County, Missouri

Section 8 Page 9

Throughout the rest of 1887 and up to the grand opening, the progress on the construction of the Opera House Block was documented weekly in both of the local newspapers, the Greenfield Dade County Advertiser and the Greenfield Vedette. Based on articles from these newspapers, it is believed that T. A. Miller, the owner of several lumberyards in Dade County and R. S. Jacobs, were two of the members of the opera house stock company. On November 7, 1887, it was reported in the Greenfield/Dade County Advertiser that "T. A. Miller has just closed a contract with N. H. Motsinger & Co. of Chicago for 400 \$2.20 opera chairs for our new opera house"<sup>3</sup> and a month later he "contracted with Mr. Close of K.C. last week to fit up the stage and scenery."<sup>4</sup> In addition, in January, 1888, R. S. Jacobs, a Greenfield banker and merchant, accompanied W. B. McReynolds to Springfield to meet with W. E. Foley. However, later accounts of the opera house's history only credit "a local philanthropist" for the financial backing for the opera house.

Progress on the opera house moved slowly due to inclement weather throughout the winter of 1887-88, due to the remote location of Greenfield and due to several unexpected events. Construction was halted due to snow or rain on multiple occasions, one of the walls of the building caved in during the construction and had to be rebuilt, and a strike for higher wages by the hod carriers caused a slight delay.

"Toward the end of the nineteenth century, arts patrons in the Midwest and the western regions of the country began to call upon the newly emerging class of architects whose practices typically involved some theater design."<sup>5</sup> The people of Greenfield followed this pattern. The construction of the Greenfield Opera House Building was a cooperative effort utilizing out-of-town professionals and local contractors and workers. The building itself was designed by Springfield architect, W. E. Foley and the stage and scenery was designed by a Mr. Close from Kansas City. However, responsibility for the construction of the building remained in local hands. Local brickmakers, builders, and contractors, W. B. McReynolds and L. J. Griggs were the general contractors and brickmakers for the opera house while S. W. Long, another local contractor and builder, was responsible for all of the interior work. The business rooms on the first floor of the opera house building were the first to be finished. In May, "the corner room of the opera house [was] fitted up by Walter B. McReynolds for an ice cream parlor."<sup>6</sup> Later, during the summer of 1888, W. B. Wade moved his store selling furniture, coffins and undertaking supplies in to the East room of the opera house, the Dade County Store moved in to the middle room and C. H. Bennett moved his drug store into the

<sup>3</sup>Greenfield Dade County Advertiser, 7 November 1887, p.5.

<sup>4</sup>Ibid, 15 December 1887, p.5.

<sup>5</sup>David Naylor and Joan Dillon American Theatres: Performance Halls of the Nineteenth Century (New York: John Wiley & Sons, 1997), p.18.

<sup>6</sup>Greenfield Vedette, 17 May 1888, p. 3.

United States Department of the Interior  
National Park Service  
National Register of Historic Places  
Continuation Sheet

Greenfield Opera House Building  
Dade County, Missouri

Section 8 Page 10

West room. However, the citizens of Greenfield had to wait until the fall to see the first performance in the opera house. When the plans for the opera house building were announced, the estimated cost of the building was \$10,000. However, "newspapers estimated the final cost between \$15,000 and \$30,000."<sup>7</sup>

On August 16, 1888, the Greenfield Opera House was dedicated and Greenfield audiences were treated to a production of "Passion's Slave" by the Chicago Comedy Company. Tickets sold for 10 to 25 cents. Other productions performed by Chicago Comedy Company during the inaugural weekend of the opera house included "Queen's Evidence," "Col. Mulberry Sellers," and "The Private Secretary." Between 1888 and 1921, the opera house was host to a wide variety of entertainment including legitimate drama, vaudeville and moving pictures. Two of the more well known celebrities to perform at the opera house were J. W. "Blind" Boone and William Jennings Bryan. By the end of second season, however, the opera house had failed to turn a profit. A June 12, 1890 article in the *Vedette* announced a July 4th benefit performance by some of the local talent to cover some of the debt accumulated by the opera house during the two previous seasons. After the first few uncertain seasons, the popularity of the opera house grew and Greenfield became the cultural and commercial hub for the county. Although Greenfield is still an important commercial center in Dade County, the Greenfield Opera House, like many small town theatres was virtually abandoned in the 1920's.

By the time *The Birth of a Nation* was produced in 1915, motion picture theaters had become accepted places of entertainment and started to roll out the red carpet for their patrons. The country manager saw a surer profit in a can of film than with a traveling company of uncertain antecedents. When his patrons walked into his theatre from the street they lost all interest in climbing three flights of steep stairs. And the old halls were left to become storage space or at best a factory loft.<sup>8</sup>

By 1921, the number of traveling theatrical companies had declined, a new community building had been built in Greenfield and the opera house fell out of use. The Greenfield High School Graduation of 1920 was the last graduation ceremony held in the opera house. In the 1920's, the opera house was used only sporadically. In 1923 and 1924, it was used as a temporary courthouse, when the Dade County Courthouse was condemned, but from the mid-1920's until 1987, the opera house sat vacant. The first floor commercial spaces were used by local merchants until the 1980's, but they were also vacant by 1987. As the opera house neared its centennial anniversary, a group of local citizens began an effort to revive the historic opera house. The group formed an organization called the Opera House Corporation composed of shareholders who each contributed at least \$1000. The group bought the building and began working on rehabilitating it. Another group that was

<sup>7</sup>200th Anniversary 1776-1976 Souvenir Booklet: Facts and Fiction of Dade County (Greenfield, MO: Vedette Printing Co., 1976), p. 21.

<sup>8</sup>H. R. Hoyt, Town Hall Tonight. (Englewood, N.J.: Prentice-Hall, Inc., 1955), p. 279.

United States Department of the Interior  
National Park Service  
National Register of Historic Places  
Continuation Sheet

**Greenfield Opera House Building**  
Dade County, Missouri

Section 8 Page 11

---

formed at the same time, the Dade County Community Theatre Company have also helped with the rehabilitation and have been performing plays in the opera house each summer since 1988. The centennial anniversary of the opera house was celebrated with a performance of an original script called "Orphan Train West."

Although the Greenfield Opera House Building was almost lost due to neglect, it is, as perhaps the only nineteenth-century second-story opera house in Missouri in use today as a performance facility, one of the most significant theatre buildings in Missouri. Moreover, the building displays much of its original design and detailing. With the help of the Opera House Corporation and the Dade County Community Theatre Company, the Greenfield Opera House Building may once again be, as it was proclaimed in an 1888 newspaper article, "the prettiest little opera house in the Southwest."<sup>9</sup>

---

<sup>9</sup>Greenfield Vedette, August 23, 1888 p. 3

United States Department of the Interior  
National Park Service  
National Register of Historic Places  
Continuation Sheet

**Greenfield Opera House Building**  
Dade County, Missouri

Section 9 Page 12

---

**Major Bibliographical References**

**Books**

200th Anniversary 1776-1976 Souvenir Booklet: Facts and Fiction of Dade County. Greenfield, MO: Vedette Printing Co., 1976.

The Donaldson Guide. Cincinnati: W. H. Donaldson, n.d.

Gus Hill's National Theatrical Directory 1914-1915. New York: Hill's National Theatrical Directory, Inc., 1915.

History of Dade County and Her People: from the date of the earliest settlements to the present time. Greenfield, MO,: Pioneer Historical Co. 1917.

Hoyt, H. R. Town Hall Tonight. Englewood, N.J. : Prentice-Hall, Inc. 1955.

Hulston, John K. A Look at Dade County, Missouri 1905-1985. Greenfield, MO: Citizens Home Bank, 1985.

Jno. B. Jeffery's Guide and Directory to the Opera Houses, Theatres, Public Halls, Bill Posters, Etc. of the Cities and Towns of America 1887-1888. Tenth and Revised Edition, Chicago: Jno. B. Jeffery, 1888.

The Julius Cahn-Gus Hill Theatrical Guide and Moving Picture Directory. New York: Julius Cahn, 1921.

Longstreth, Richard. The Buildings of Main Street. Washington, D.C.: The Preservation Press, 1987.

Missouri State Gazetteer and Business Directory 1896-1899. Detroit and St. Louis: R. L. Polk & Co and A. C. Danser, 1899.

Naylor, David and Dillon, Joan. American Theaters: Performance Halls of the Nineteenth Century. New York: John Wiley and Sons, 1997

Pictorial Memories of Dade County, Missouri. Greenfield, MO: Dade County Historical Society, 1990.

Pictorial and Genealogical Record of Green County, Missouri. Chicago: Goodspeed Brothers Publishers, 1893



United States Department of the Interior  
National Park Service  
National Register of Historic Places  
Continuation Sheet

Greenfield Opera House Building  
Dade County, Missouri

Section 9 Page 13

Newspapers

"A Grand Old Opera House." Joplin Globe. October 12, 1991.

"Curtain Going Up on Ozarks History." Springfield News-Leader. August 27, 1988.

Dade County Advocate. June 9, 1887, July 14, 1887, July 28, 1887, October 22, 1887, November 10, 1887, November 17, 1887, November 24, 1887, December 15, 1887, January 26, 1888, February 16, 1888, August 9, 1888, August 16, 1888, May 30, 1888.

"Going Forward." Greenfield Vedette. August 24, 1989

Greenfield Dade County Vedette. May 26, 1887, June 2, 1887, June 9, 1887, April 5, 1888, April 12, 1888, April 26, 1888, May 17, 1888, May 24, 1888, July 12, 1888, August 23, 1888, November 21, 1889, December 6, 1889, January 1, 1890, May 22, 1890, June 12, 1890, December 29, 1892.

"Greenfield Opra House Getting Face-lift." Joplin Globe. February 26, 1989.

"Group Revives Glory of Stately Opera House." Jefferson City Post Tribune. August 27, 1988

"Old Opera House Link With Past." Joplin Globe. June 18, 1973.

"Opera House Opens for Anniversary." Springfield News-Leader. July 1, 1988

"'Orphan Train West' A Big Success." Greenfield Vedette. August 17, 1988.

"Renovation Reveals History." Springfield News-Leader. July 10, 1988

Maps

Sanborn Fire Insurance Maps 1885, 1892, 1900, 1910, 1924

Personal Correspondence

Dade County Historical Society to Becky L. Snider, November 10, 1937  
Historic Missouri Theatres Questionnaire returned.

United States Department of the Interior  
National Park Service  
National Register of Historic Places  
Continuation Sheet

Greenfield Opera House Building  
Dade County, Missouri

Section 10, Photographs Page 14

---

**Verbal Boundary Description**

Lot Three and the north 24 feet 4 inches of Lot 4, Block 7, City of Greenfield, Dade County.

**Boundary Justification**

The boundary includes the entire city lot and the portion of a second lot historically associated with the Greenfield Opera House Building.

**Photographs:**

The following is the same for all photographs:

Greenfield Opry House  
Water Street, Southwest Corner of the Square  
Greenfield, Dade County, Missouri  
Becky Snider  
March, 1998  
Negatives on file with Becky Snider  
1008 Sunset Drive  
Columbia, MO 65203

1. North Facade
2. North and West Facades
3. North Facade Detail
4. West Facade
5. South Facade
6. Interior Main Staircase
7. Second Floor Corridor / Ticket Window
8. Opera House - Interior Facing South
9. Opera House - Interior Facing North

**United States Department of the Interior  
National Park Service  
National Register of Historic Places  
Continuation Sheet**

Section 10, Photographs Page 15

**Greenfield Opera House Building  
Dade County, Missouri**

---

10. Opera House - Stage
11. Opera House - Rear Stage
12. Opera House - Stage Right Wing
13. Opera House - Concession Room
14. Third Floor Lodge Room / Ballroom
15. Third Floor Lodge Room / Ballroom

United States Department of the Interior  
National Park Service

National Register of Historic Places  
Continuation Sheet

Greenfield Opera House Building  
Dade County, Missouri

Section Certification Statement Page \_\_\_\_\_

The purpose of this Section 3 statement is certification, by the appropriate certifying official, of the enclosed amendment to the National Register Registration Form for the Greenfield Opera House Building in Greenfield, Dade County, Missouri.

**3. State/Federal Agency Certification**

As the designated authority under the National Historic Preservation Act, as amended, I hereby certify that this  nomination  request for determination of eligibility meets the documentation standards for registering properties in the National Register of Historic Places and meets the procedural and professional requirements set forth in 36 CFR Part 60. In my opinion, the property  meets  does not meet the National Register criteria. I recommend that this property be considered significant  nationally  statewide  locally. ( See continuation sheet for additional comments .)

Signature of certifying official/Title LaVerne Brondell/Deputy SHPO Date 2/2/15

Missouri Department of Natural Resources  
State or Federal agency and bureau

In my opinion, the property  meets  does not meet the National Register criteria.  
( See continuation sheet for additional comments .)

Signature of certifying official/Title \_\_\_\_\_

State or Federal agency and bureau \_\_\_\_\_

**10 Geographical Data**

Acreege of Property less than 1

**UTM References**

A. Zone Easting Northing  
15 425590 4141010

B. Zone Easting Northing

C. Zone Easting Northing

D. Zone Easting Northing

[ ] See continuation sheet

**Verbal Boundary Description**

(Describe the boundaries of the property on a continuation sheet.)

**Boundary Justification**

(Explain why the boundaries were selected on a continuation sheet.)

**11 Form Prepared By**

name/title Becky L. Snider

organization n/a

date August 24, 1998

street & number 1801 Sunset Drive

telephone 573-443-3241

city or town Columbia

state Missouri

zip code 65203

**Additional Documentation**

Submit the following items with the completed form:

**Continuation Sheets**

**Maps**

A USGS map (7.5 or 15 minute series) indicating the property's location.

A Sketch map for historic districts and properties having large acreage or numerous resources.

**Photographs**

Representative black and white photographs of the property.

**Additional Items**

(Check with the SHPO or FPO for any additional items)

**Property Owner**

(Complete this item at the request of SHPO or FPO.)

name Greenfield Opry House Corporation c/o Janet & John McClanahan

street & number RR 2, Box 40 Hwy. 39

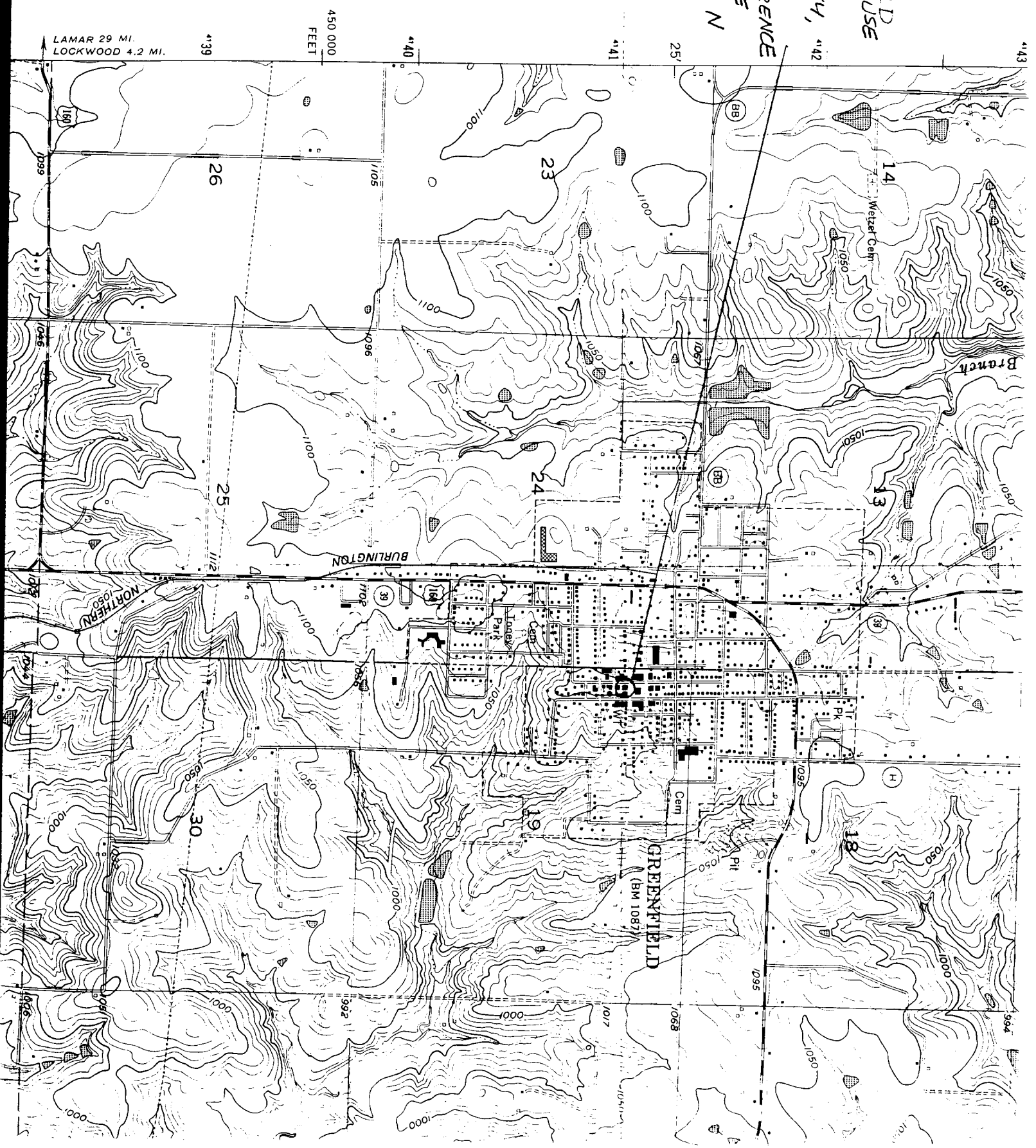
telephone 417-637-2225

city or town Greenfield

state Missouri

zip code 65661

GREENFIELD  
OPERA HOUSE  
BUILDING  
DADE COUNTY, MISSOURI  
UTM REFERENCE  
15/425590 E  
15/414010 N



LAMAR 29 MI.  
LOCKWOOD 4.2 MI.

450 000  
FEET

4139

4140

4141

25

4143

26

23

14

25

24

13

BURLINGTON

39

39

30

19

18

GREENFIELD  
(BM 1087)

964

1068

992

1017

1050

1095

1000

1050

1000

1025

1050

1000

1050

1025

1000

1050

1000

1025

1000

1050

1000

1025

1000

1050

1000

1025

1000

1050

1000

1025

1000

1050

1000

1025

1000

1050

1000

1025

1000

1050

1000

1025

1000

1050

1000

1025

1000

1050

1000

1025

1000

1050

1000

1025

1000

1050

1000

1025

1000

1050

1000

1025

1000

1050

1000

1025

1000

1050

1000

1025

1000

1050

1000

1025

1000

1050

1000

1025

1000

1050

1000

1025

1000

1050

1000

1025

1000

1050

1000

1025

1000

1050

1000

1025

1000

1050

1000

1025

1000

1050

1000

1025

1000

1050

1000

1025

1000

1050

1000

1025

1000

1050

1000

1025

1000

1050

1000

1025

1000

1050

1000

1025

1000

1050

1000

1025

1000

1050

1000

1025

1000

1050

1000

1025

1000

1050

1000

1025

1000

1050

1000

1025

1000

1050

1000

1025

1000

1050

1000

1025

1000

1050

1000

1025

1000

1050

1000

1025

1000

1050

1000

1025

1000

1050

1000

1025

1000

1050

1000

1025

1000

1050

1000

1025

1000

1050

1000

1025

1000

1050

1000

1025

1000

1050

1000

1025

1000

1050

1000

1025

1000

1050

1000

1025

1000

1050

1000

1025

1000

1050

1000

1025

1000

1050

1000

1025

1000

1050

1000

1025

1000

1050

1000

1025

1000

1050

1000

1025

1000

1050

1000

1025

1000

1050

1000

1025

1000

1050

1000

1025

1000

1050

1000

1025

1000

1050

1000

1025

1000

1050

1000

1025

1000

1050

1000

1025

1000

1050

1000

1025

1000

1050

1000

1025

1000

1050

1000

1025

1000

1050

1000

1025

1000

1050

1000

1025

1000

1050

1000

1025

1000

1050

1000

1025

1000

1050

1000

1025

1000

1050

1000

1025

1000

1050

1000

1025

1000

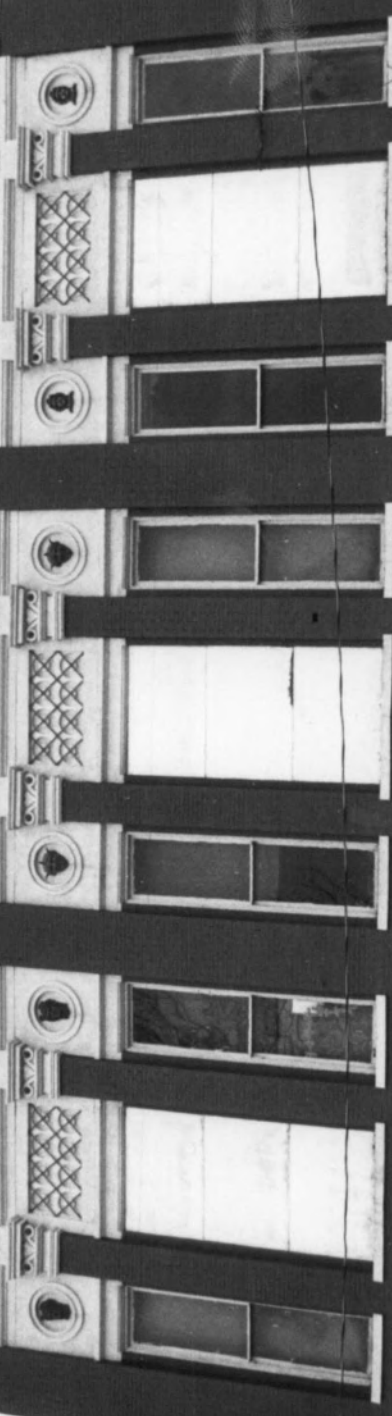
1050

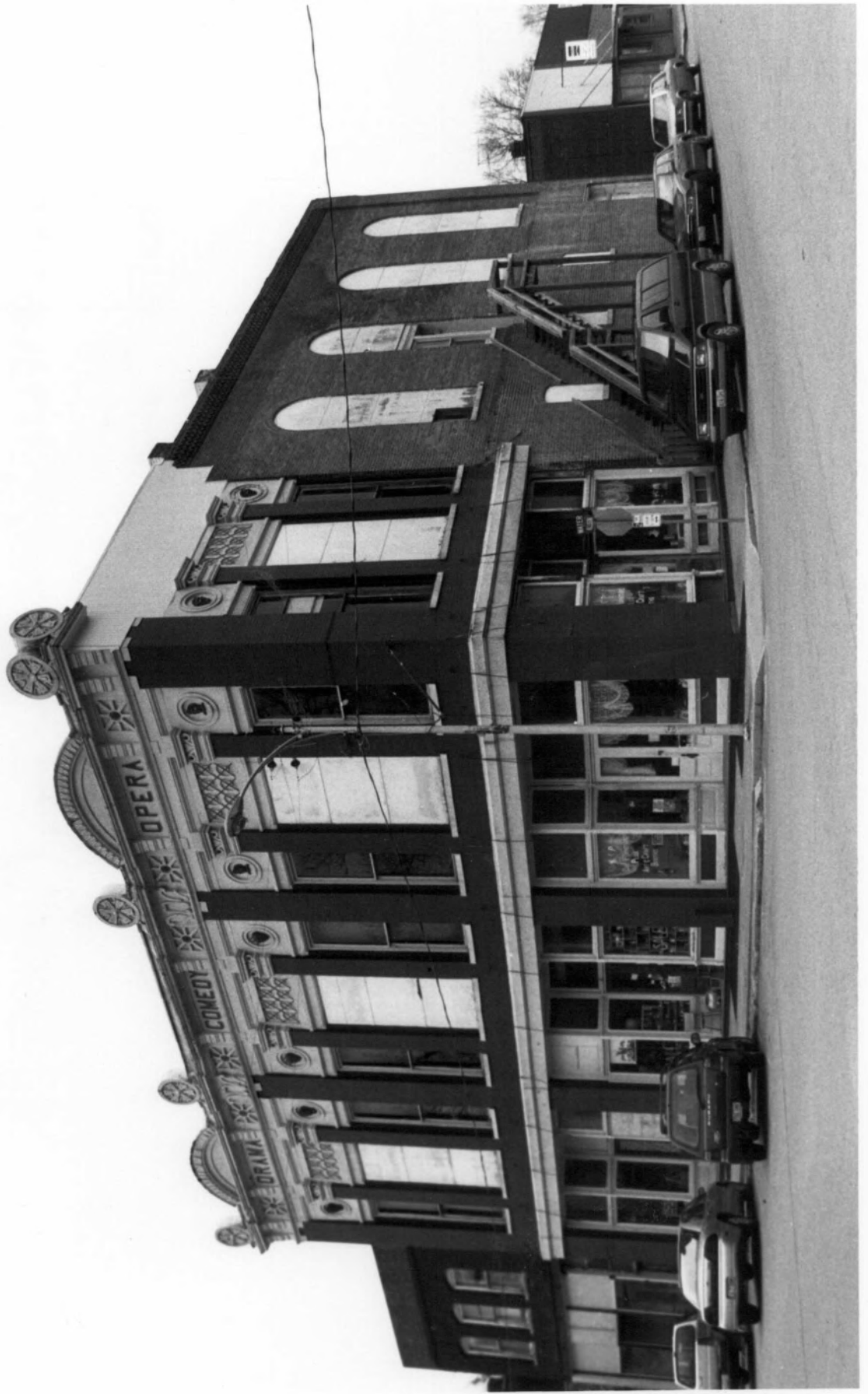
1000

1025

1000

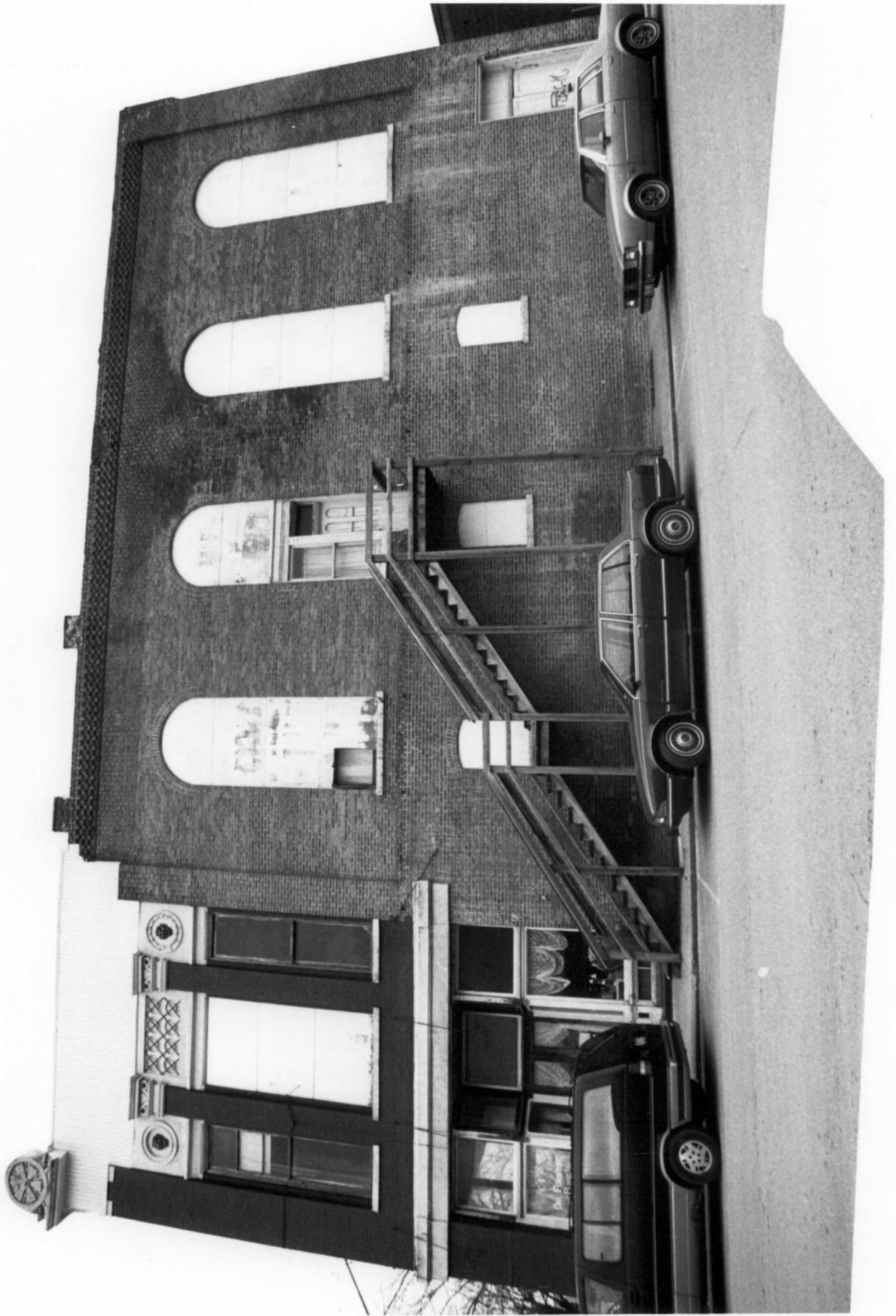
DRAMA COMEDY OPERA



















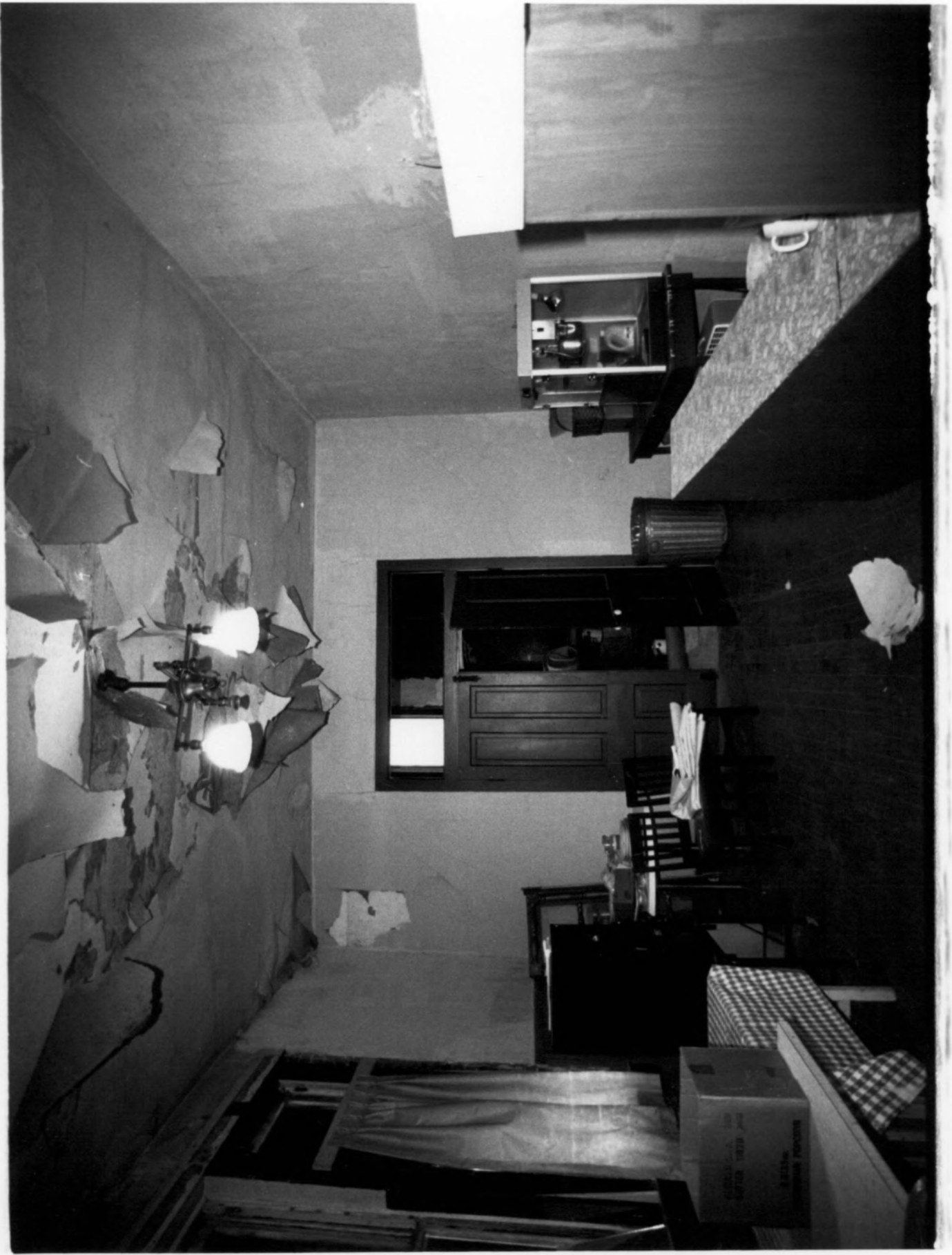


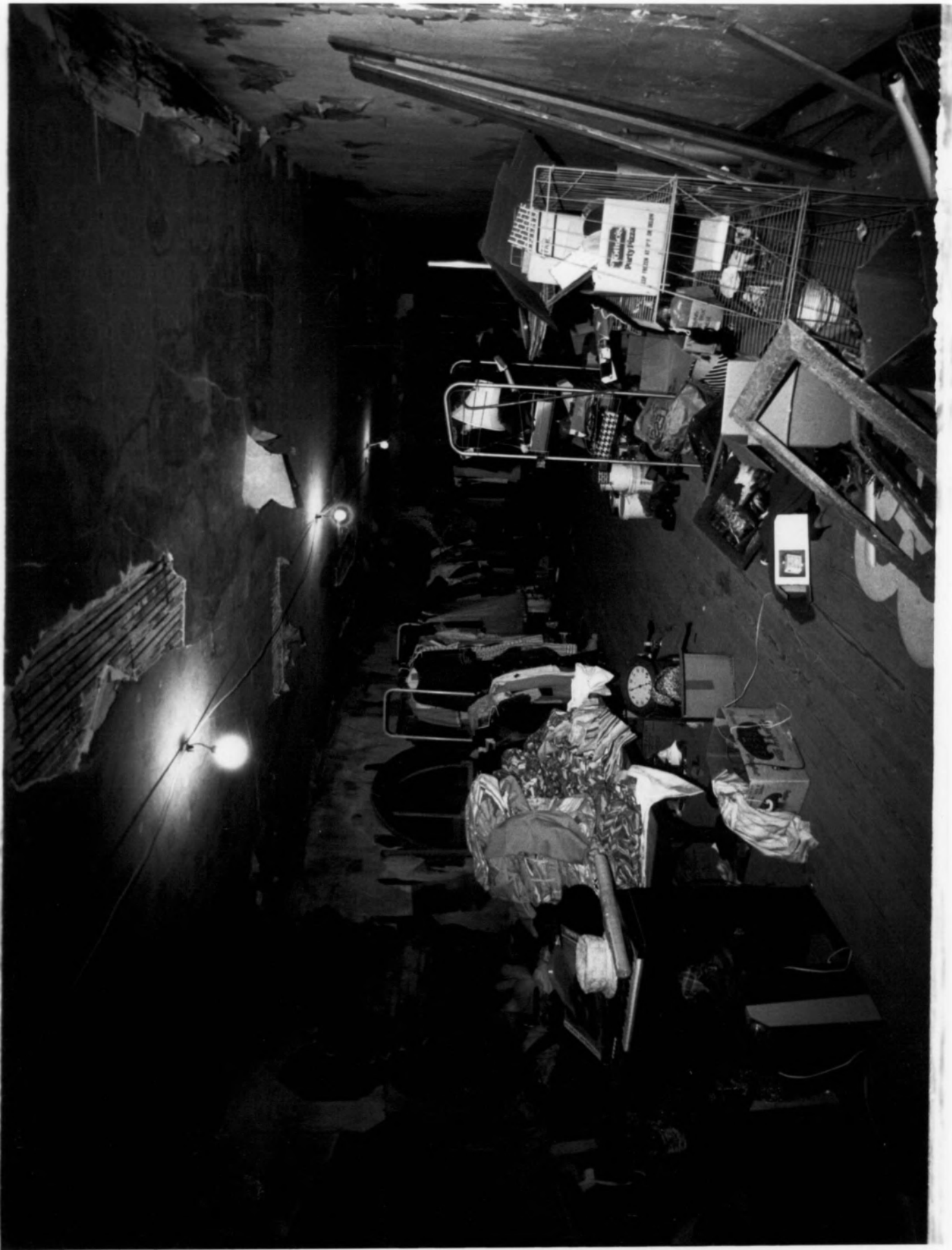














• Rec. 3-2-70 M SPB  
•  
•

Greenfield Opera House

Greenfield Mo.

Dade Co. Stockton

Sent by Allen D Hughes Ms K4



