

JEFFERSON

NICHOLS

COURT

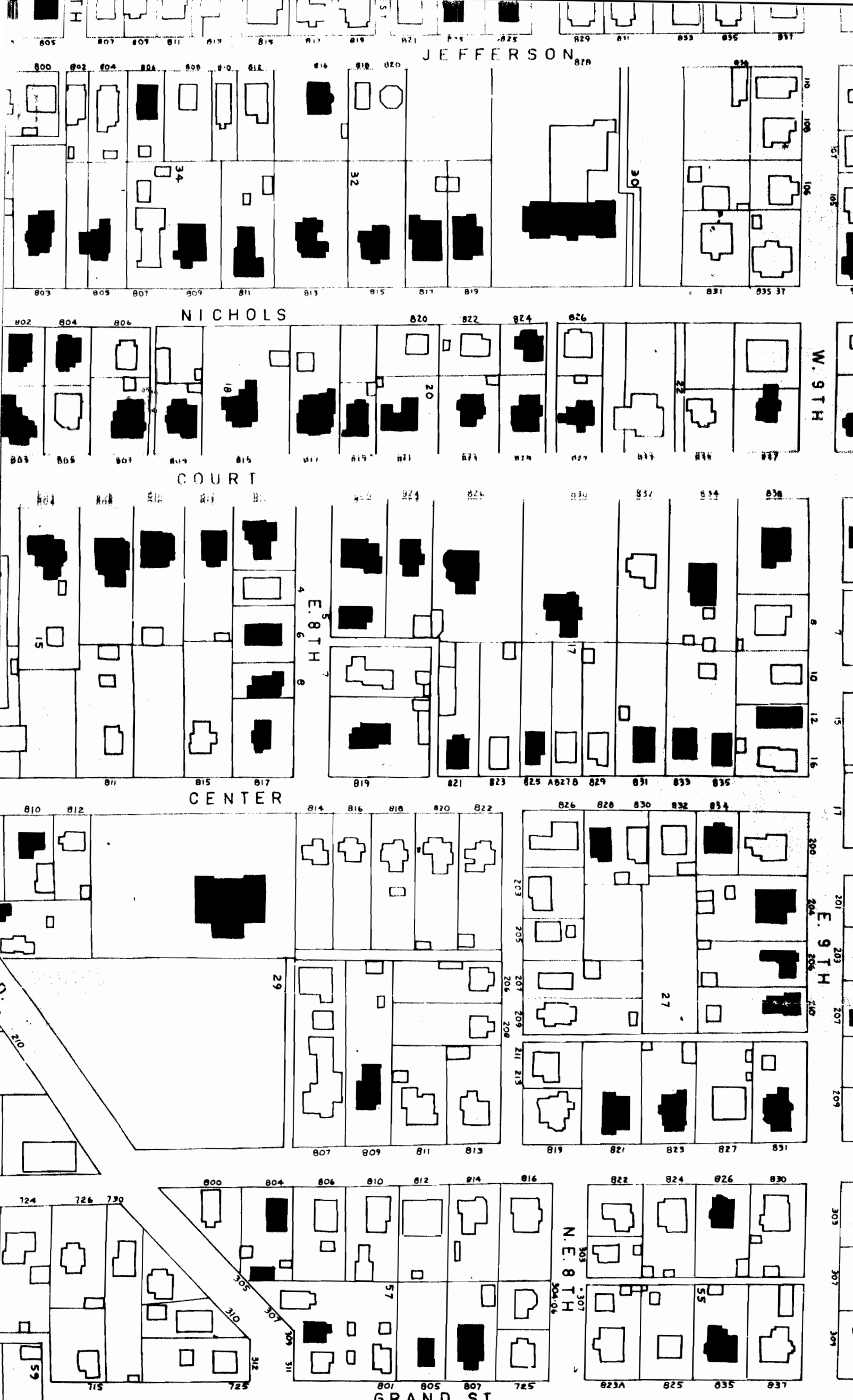
CENTER

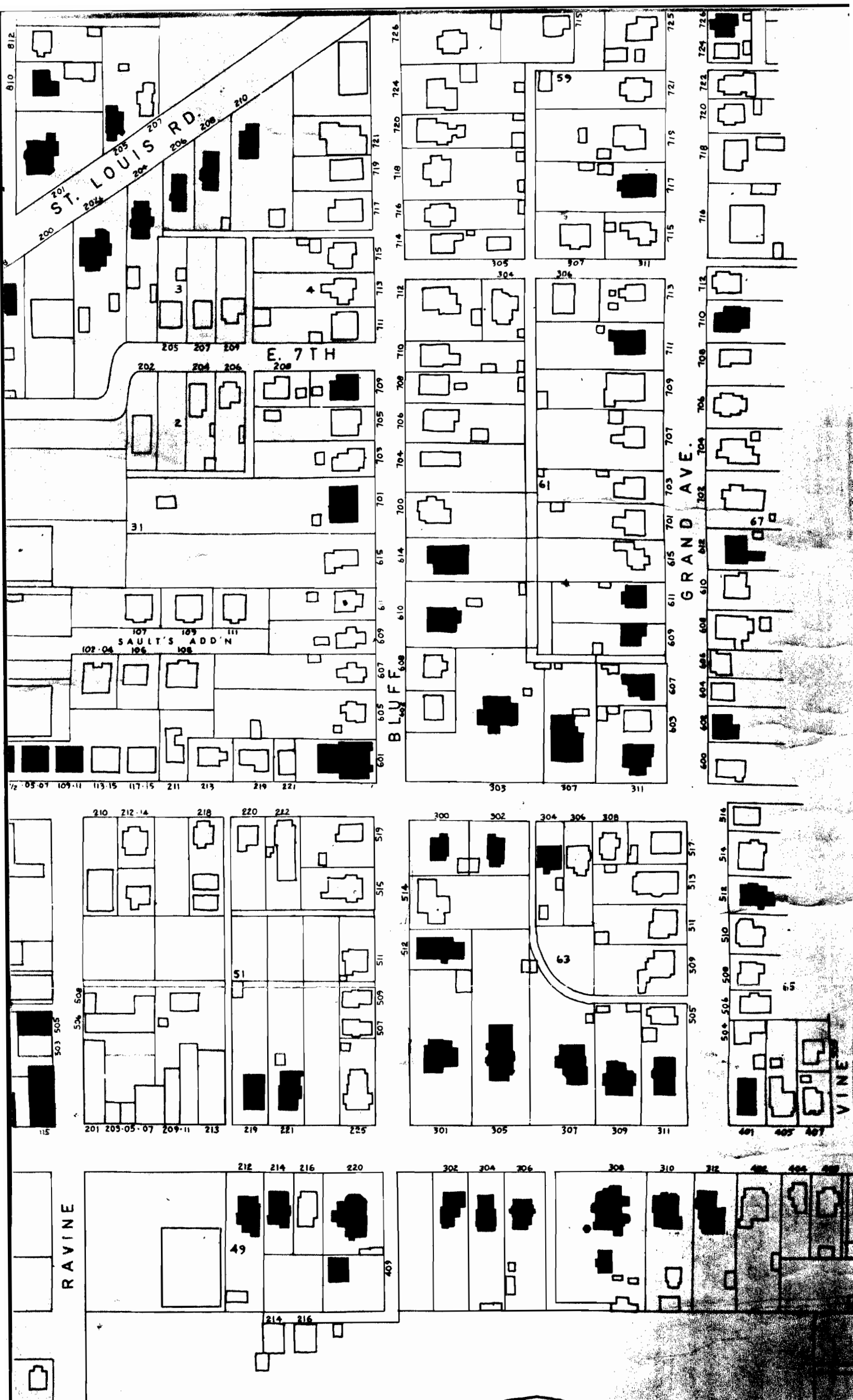
GRAND ST.

W. 9TH

E. 9TH

N.E. 8TH





ST. LOUIS RD.

E. 7TH

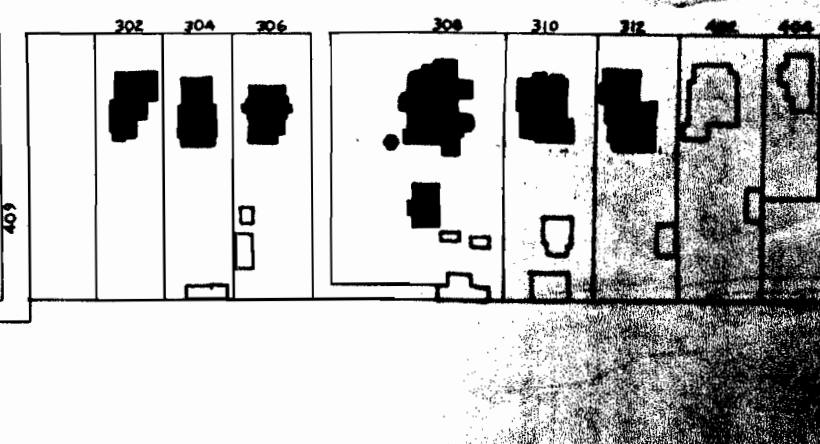
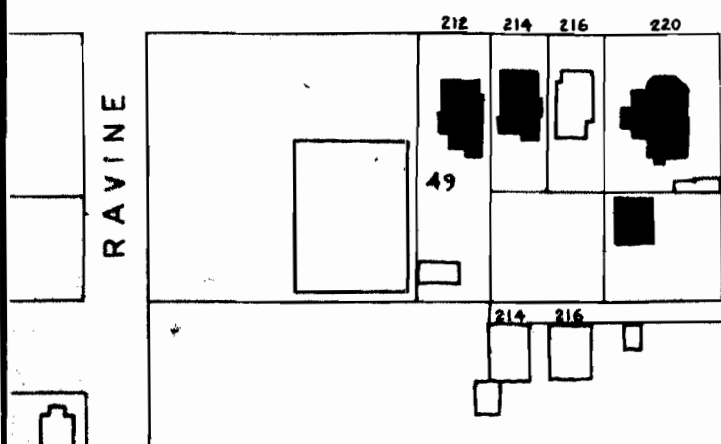
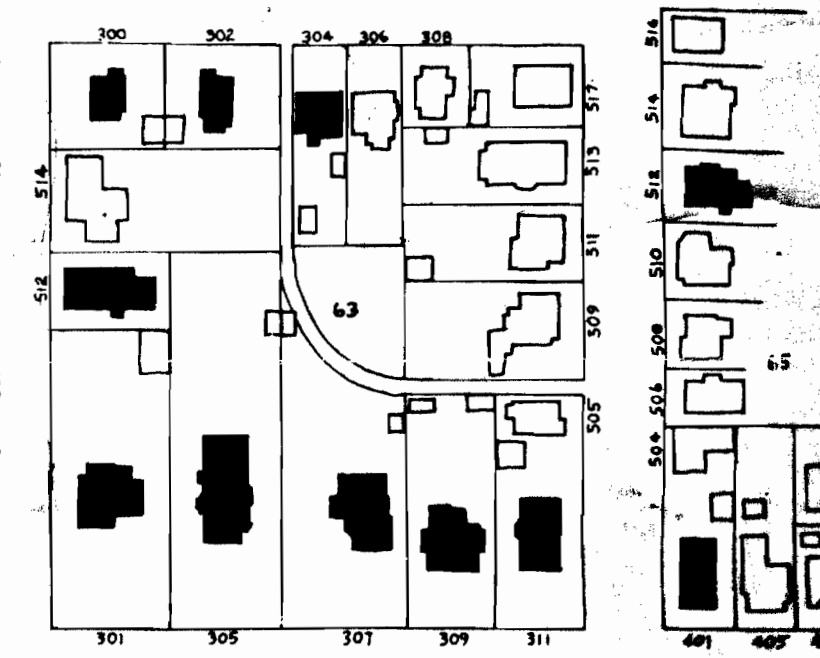
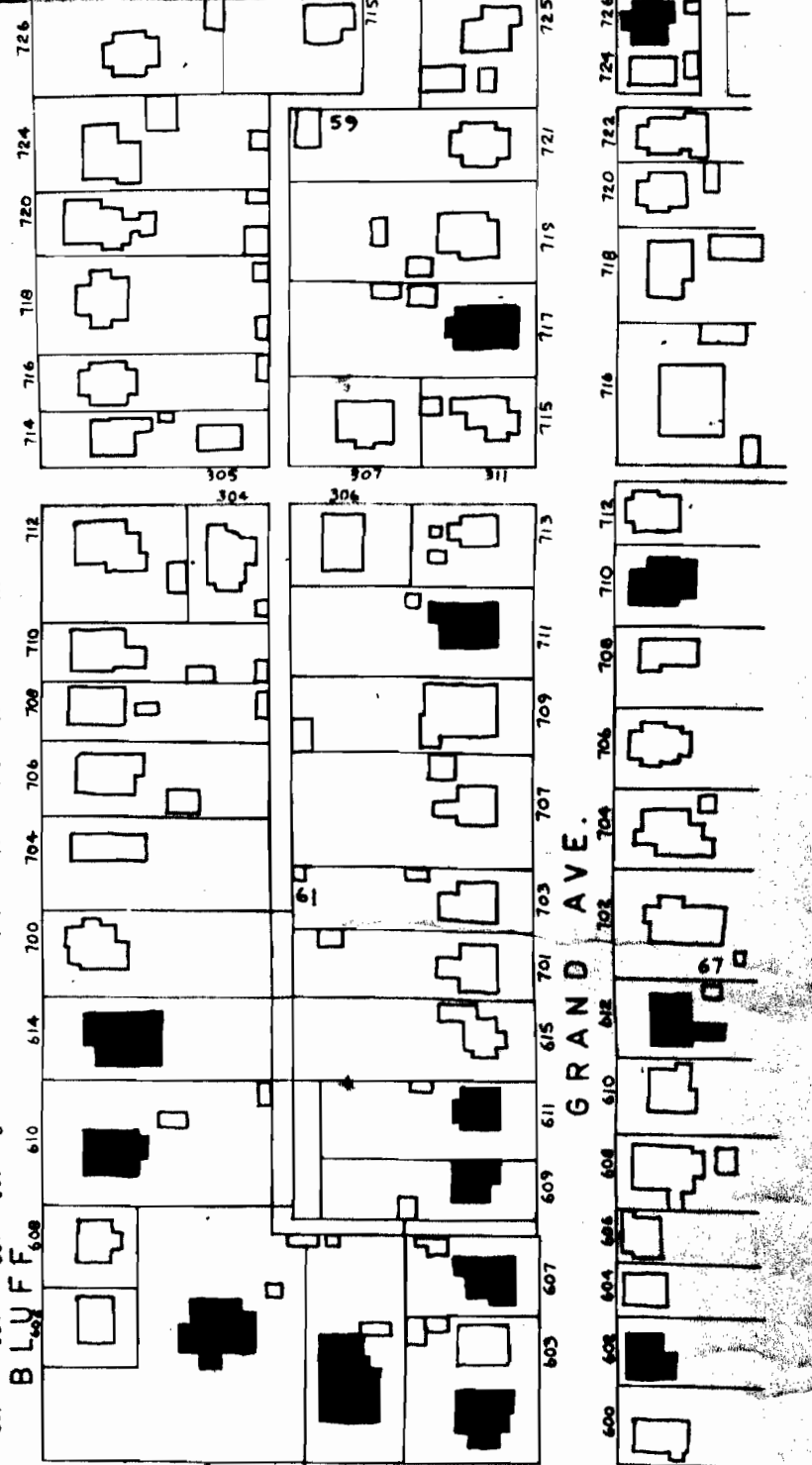
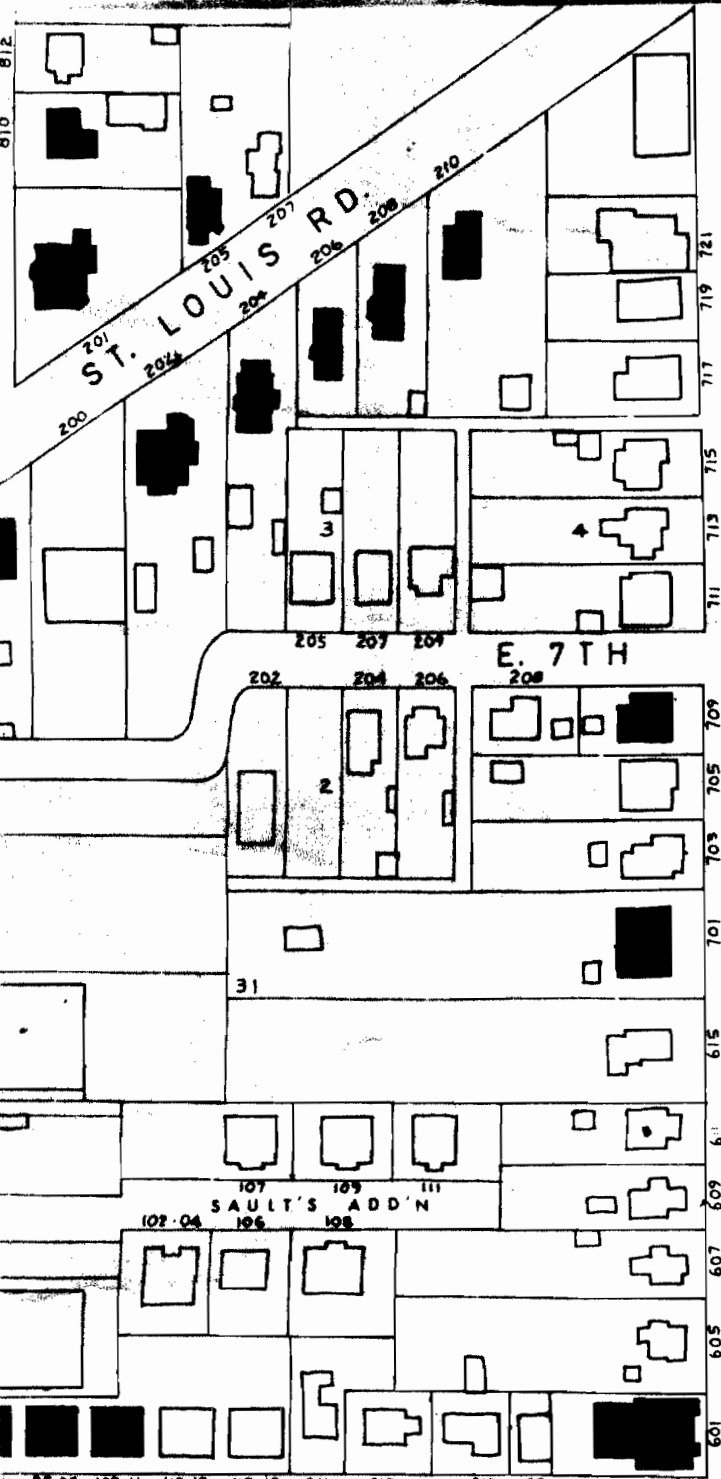
BLUFF

GRAND AVE.

VINE

SAULT'S ADD'N

RAVINE





AVE. 805 803 801

W. 8TH 804 802 800 801 803 805

804 802 801 803 810 812

109 107 106 104 110 716 714 712 710 708 706 704 702 701 109 107 105

16 719 711 708 706 704 702

15 716 105 102 198 101 710 103

36 38 705 703 701 109 107 105

14 708 706 704 702 617 611 607

13 712 710 708 706 704 702 703 614 608 602 101 103 1/2 05-07

40 602 601 603 109 107 105

W. 7TH 11 606 12 607

E. 7TH 7 614 609 600 610-12 101 103 1/2 05-07

204 202 200 110 108 106 104 102 513 511 509 507 505 503 501

W. 6TH 14-12 10 8 523 525 527 523 525 27 29 31 33 35

E. 6TH 9 508 10-12 14-16 20 22 24 26 28 30 32 34 36 38 522 516 512 508 504 500 104 33

JEFFERSON 505 513 515 517 512 514 516 523 525 527 42

10 505 513 515 517 523 525 27 29 31 33 35

104 522 516 512 508 504 500 104 33

100 W. 5th 403 401 405 407 409 411 413 415 417 419 421 423 425 427 429 431 433 435 437 439 441 443 445 447 449 451 453 455 457 459 461 463 465 467 469 471 473 475 477 479 481 483 485 487 489 491 493 495 497 499 501 503 505 507 509 511 513 515 517 519 521 523 525 527

W. 5TH 14-12 10 8 523 525 527 523 525 27 29 31 33 35

E. 6TH 9 508 10-12 14-16 20 22 24 26 28 30 32 34 36 38 522 516 512 508 504 500 104 33

First National Bank Callaway County parking lot 44 Niedergerke 405 407 409 411 413 415 417 419 421 423 425 427 429 431 433 435 437 439 441 443 445 447 449 451 453 455 457 459 461 463 465 467 469 471 473 475 477 479 481 483 485 487 489 491 493 495 497 499 501 503 505 507 509 511 513 515 517 519 521 523 525 527

parking lots 401-05-07-09-11-13-15-17 17 9 7 401-05-07-09-11-13-15-17

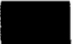

7 402 404-06 412 35 106

108 106 104 102 100 98 96 94 92 90 88 86 84 82 80 78 76 74 72 70 68 66 64 62 60 58 56 54 52 50 48 46 44 42 40 38 36 34 32 30 28 26 24 22 20 18 16 14 12 10 8 6 4

W. 4TH 16 14 12 10 8 6 4

E. 4TH 10 12 14 16 18 20 106

LEGEND:

-  ARCHITECTURAL AND/OR HISTORICAL SIGNIFICANCE - THIS DESIGNATION INCLUDES BUILDINGS WHICH COULD BE ARCHITECTURALLY SIGNIFICANT IF THEY WERE PROPERLY RESTORED
-  LITTLE OR NO SIGNIFICANCE PERCEIVED AT THIS TIME

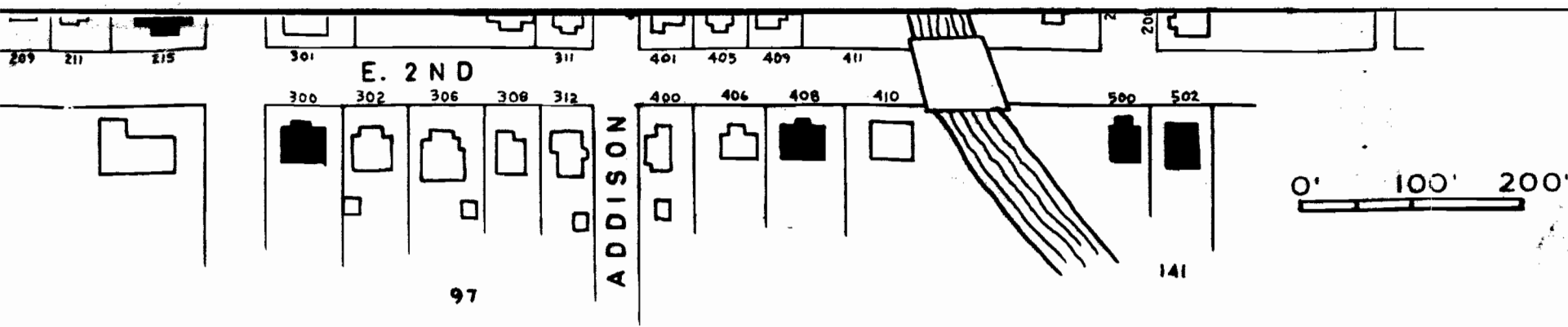
1978 - 1979 - PHYLLIS STRAWN

JUNE 1978 - CHARLES JONES

JAMES DARROUGH

PHYLLIS STRAWN

MAP BY PAT HAYS BAER



# ARCHITECTURAL SURVEY FULTON, MISSOURI

MISSOURI HERITAGE TRUST, INC. P.O. BOX 895, JEFFERSON CITY, MISSOURI

PREPARATION OF THIS SURVEY WAS AIDED BY MATCHING FUNDS RECEIVED FROM THE U.S. DEPARTMENT OF INTERIOR THROUGH THE STATE HISTORIC PRESERVATION OFFICE AND THE CITY OF FULTON.

Inside  
 Approximate area of  
 Fulton sited by Postmaster base  
 article  
 July 27, 1984  
 preferred site under consideration