

**United States Department of the Interior
National Park Service**

**National Register of Historic Places
Continuation Sheet**

Section number _____ Page _____

SUPPLEMENTARY LISTING RECORD

NRIS Reference Number: 02001090

Date Listed: October 3, 2002

Property Name: George W. and Virginia Fishback House

County: St. Louis

State: Missouri

Historic Resources of Kirkwood, Missouri
Multiple Name

This property is listed in the National Register of Historic Places in accordance with the attached nomination documentation subject to the following exceptions, exclusions, or amendments, notwithstanding the National Park Service certification included in the nomination documentation.

for Daniel J. Vivian
Signature of the Keeper

October 3, 2002
Date of Action

Amended Items in Nomination:

Section 10: Geographical Data

The Boundary Justification is hereby amended to read as follows: "The boundary encompasses the parcel of land historically associated with the Fishback House."

The Missouri State Historic Preservation Office was notified of this amendment.

DISTRIBUTION:

- National Register property file**
- Nominating Authority (without nomination attachment)**

United States Department of the Interior
National Park Service

National Register of Historic Places Registration Form

1. Name of Property

historic name Fishback, George W. and Virginia, House

other names/site number N/A

2. Location

street & number 440 East Argonne [N/A] not for publication

city or town Kirkwood [N/A] vicinity

state Missouri code MO county St. Louis code 189 zip code 63122

3. State/Federal Agency Certification

As the designated authority under the National Historic Preservation Act, as amended, I hereby certify that this nomination request for determination of eligibility meets the documentation standards for registering properties in the National Register of Historic Places and meets the procedural and professional requirements set forth in 36 CFR Part 60. In my opinion, the property meets does not meet the National Register criteria. I recommend that this property be considered significant nationally statewide locally. (See continuation sheet for additional comments)

Claire F. Blackwell 12 August 02
Signature of certifying official/Title Claire F. Blackwell/Deputy SHPO Date

Missouri Department of Natural Resources
State or Federal agency and bureau

In my opinion, the property meets does not meet the National Register criteria.
(See continuation sheet for additional comments)

Signature of certifying official/Title Date

State or Federal agency and bureau

4. National Park Service Certification

I hereby certify that the property is:

entered in the National Register.
See continuation sheet .

determined eligible for the
National Register.
See continuation sheet .

determined not eligible for the
National Register.

removed from the National
Register.

other, (explain:)

Signature of the Keeper

Date of Action

**Fishback, George W. and Virginia, House
St. Louis County, Missouri
Historic Resources of Kirkwood, Missouri**

5. Classification

Ownership of Property	Category of Property	Number of Resources Within Property		
		Contributing	Non-contributing	
<input checked="" type="checkbox"/> private	<input checked="" type="checkbox"/> building(s)	1	0	buildings
<input type="checkbox"/> public-local	<input type="checkbox"/> district	0	0	sites
<input type="checkbox"/> public-State	<input type="checkbox"/> site	0	0	structures
<input type="checkbox"/> public-Federal	<input type="checkbox"/> structure	0	0	objects
	<input type="checkbox"/> object	1	0	Total

Name of related multiple property listing.

Historic Resources of Kirkwood, Missouri

Number of contributing resources previously listed in the National Register.

0

6. Function or Use

Historic Functions

DOMESTIC/ single dwelling

Current Functions

DOMESTIC/ single dwelling

7. Description

Architectural Classification

Mid-19th Century/Greek Revival

Materials

foundation Stone
walls Weatherboard
roof Asphalt
other Wood

Narrative Description See continuation sheet [x].

See continuation sheet []

**Fishback, George W. and Virginia, House
St. Louis County, Missouri
Historic Resources of Kirkwood, Missouri**

8. Statement of Significance

Applicable National Register Criteria

A Property is associated with events that have made a significant contribution to the broad patterns of our history.

B Property is associated with the lives of persons significant in our past.

C Property embodies the distinctive characteristics of a type, period, or method of construction or represents the work of a master, or possesses high artistic values, or represents a significant and distinguishable entity whose components lack individual distinction.

D Property has yielded, or is likely to yield, information important in prehistory or history.

Criteria Considerations

Property is:

A owned by a religious institution or used for religious purposes.

B removed from its original location.

C a birthplace or grave.

D a cemetery.

E a reconstructed building, object, or structure.

F a commemorative property.

G less than 50 years of age or achieved significance within the past 50 years.

Narrative Statement of Significance

See continuation sheet [x].

9. Major Bibliographic References

Bibliography

See continuation sheet [x].

Previous documentation on file (NPS):

preliminary determination of individual listing (36 CFR 67) has been requested

previously listed in the National Register

previously determined eligible by the National Register

designated a National Historic Landmark

recorded by Historic American Buildings Survey

recorded by Historic American Engineering Record

Areas of Significance

Architecture

Period of Significance

ca. 1867-ca. 1900

Significant Dates

ca. 1867-ca. 1900

Significant Person(s)

N/A

Cultural Affiliation

N/A

Architect/Builder

Unknown

Primary location of additional data:

State Historic Preservation Office

Other State Agency

Federal Agency

Local Government

University

Other:

Name of repository:

Kirkwood Department of Planning and Development

**Fishback, George W. and Virginia, House
St. Louis County, Missouri
Historic Resources of Kirkwood, Missouri**

10. Geographical Data

Acreege of Property Less than one acre

UTM References

A. Zone	Easting	Northing	B. Zone	Easting	Northing
15	726660	4273280			

C. Zone	Easting	Northing	D. Zone	Easting	Northing

[] See continuation sheet

Verbal Boundary Description

(Describe the boundaries of the property on a continuation sheet.)

Boundary Justification

(Explain why the boundaries were selected on a continuation sheet.)

11. Form Prepared By

name/title See Continuation Sheet

organization _____ date _____

street & number _____ telephone _____

city or town _____ state _____ zip code _____

Additional Documentation

Submit the following items with the completed form:

Continuation Sheets

Maps

A **USGS map** (7.5 or 15 minute series) indicating the property's location.

A **Sketch map** for historic districts and properties having large acreage or numerous resources.

Photographs

Representative **black and white photographs** of the property.

Additional Items

(Check with the SHPO or FOP for any additional items)

Property Owner

(Complete this item at the request of SHPO or FPO.)

name James and Kathleen Mannion

street & number 440 East Argonne telephone (314) 966-4574

city or town Kirkwood state MO zip code 63122

United States Department of the Interior
National Park Service
National Register of Historic Places
Continuation Sheet

Section number 7 Page 1

Fishback, George W. and Virginia, House
St. Louis County, Missouri
Historic Resources of Kirkwood, Missouri

Summary: The George W. and Virginia Fishback House, at 440 E. Argonne in Kirkwood, St. Louis County, Missouri, is a two-story, five bay, Greek Revival style frame house. Constructed ca. 1867, the intact house is one of the largest surviving examples of Property Type A. Greek Revival Houses. It meets the registration requirements for that property type set forth in the MPS Cover document "Historic Resources of Kirkwood, Missouri." Typically Greek Revival elements of the house include a symmetrical facade with a monumental pedimented portico, matching monumental corner pilasters and multi-light windows. All of the six-over-six windows of the front part of the house are early or original, and in good condition, as is the weatherboard wall cladding, and all of the elaborate exterior wood trim. The house faces north to Argonne; a circular drive occupies the area between the street and the house. The house has a side-facing gable roof, and is deeper than it is wide. A low garage is attached to the southeast corner of an early rear addition to the house. These additions are set well back from the street, and do not seriously impact the historic appearance of the house. This large house is highly intact, and appears today much as it did in the 1860s. It is a rare example of a high-style Greek Revival residence in Kirkwood.

ELABORATION: The George W. Fishback House presents a high-style Greek Revival facade virtually unaltered from its time of construction ca. 1867. The house faces north onto E. Argonne, and its symmetrical facade is dominated by a three-quarter width, full-height portico. The front-facing gable roof of the porch has a continuous wide band of cornice trim, which includes dentils, forming a triangular pediment on the gable end. Set within the tympanum of the porch is a circular vent with decorated wood surround. The pedimented portico is supported by four large, square paneled wood columns, with paneled capitals. The wooden porch balustrades have decorative cut-out patterns and a wide wood top railing.

The original portion of the two-story house has a side gable, low-pitched roof. There are wide, molded fascia boards, boxed eaves, and dentils above a plain frieze board. The house, covered with narrow clapboards, has a wide sill board above the stone foundation. At the corners of the front elevation, plain engaged columns feature elaborately carved brackets at the roof-wall junction. There are also brackets under the eaves at the rear corners of the house, and above the four porch columns.

The five-bay front elevation has six-over-six, double-hung wood sash windows with historic glass, which are taller on the first story than on the second. The windows on the remaining elevations vary in size, but have the same configuration. Several have louvered wood shutters. The front entry on the ground level has a wood door with glass lights, transom above, and a simple wood surround.

An early two-story, rear addition is on the southeast corner of the house. It runs from approximately the center of the rear elevation, and extends a few feet beyond the plane of the east

United States Department of the Interior
National Park Service

National Register of Historic Places
Continuation Sheet

Section number 7 Page 2

Fishback, George W. and Virginia, House
St. Louis County, Missouri
Historic Resources of Kirkwood, Missouri

wall. This addition has a stone foundation. The west half of the rear elevation features a two-story, shed roofed, screened-in porch, and a deck with a wood spindle balustrade extends to the south. A one-story, three-car garage has a side gable roof, and connects with the rear addition on the southeast corner of the house. The two eastern bays of the garage are part of a garage which originally constructed in 1929. They retain their double doors, with four vertical wood panels and eight glass lights in each door. Later, another car bay was added to the west, connecting the garage to the house. This garage door is a modern, overhead wood paneled door with three glass lights. The frame garage also has narrow wood clapboards. At the southeast junction of the house and garage, double wood bulkhead doors lead to a cellar.

In addition to retaining its integrity as a representative of the Greek Revival Residences property type on the exterior, the Fishback house contains many original interior design elements as well. The central hall plan features a stair with elaborately turned balusters and an especially ornate newel post. (See photo 6.) Interior door and window trim is also intact; those openings are topped by shallow pedimented lintel pieces and surrounded by simple flat trim boards. Many of the windows have recessed wood panels beneath them, and most rooms retain their wide wooden crown molding and plaster walls and ceilings.

The house sits back on its relatively flat yard. There is a planted area in the center of the circular drive in front of the house, which is bordered with cut stones. There are several medium to large trees in the front yard, and mature deciduous trees scattered in both the front and rear yards. It is located on a quite residential street, and surrounded by large houses of varying ages and styles. The houses to either side of it were all built in the early to mid-twentieth century; this house occupied the entire block for much of its early history.

The Fishback house continues to serve its original single family use, and has seen no exterior alterations of note in the last century. It is a rare, intact example of the Greek Revival Houses property type, and appears today very much as it did when the Fishbacks made it their home. ♡

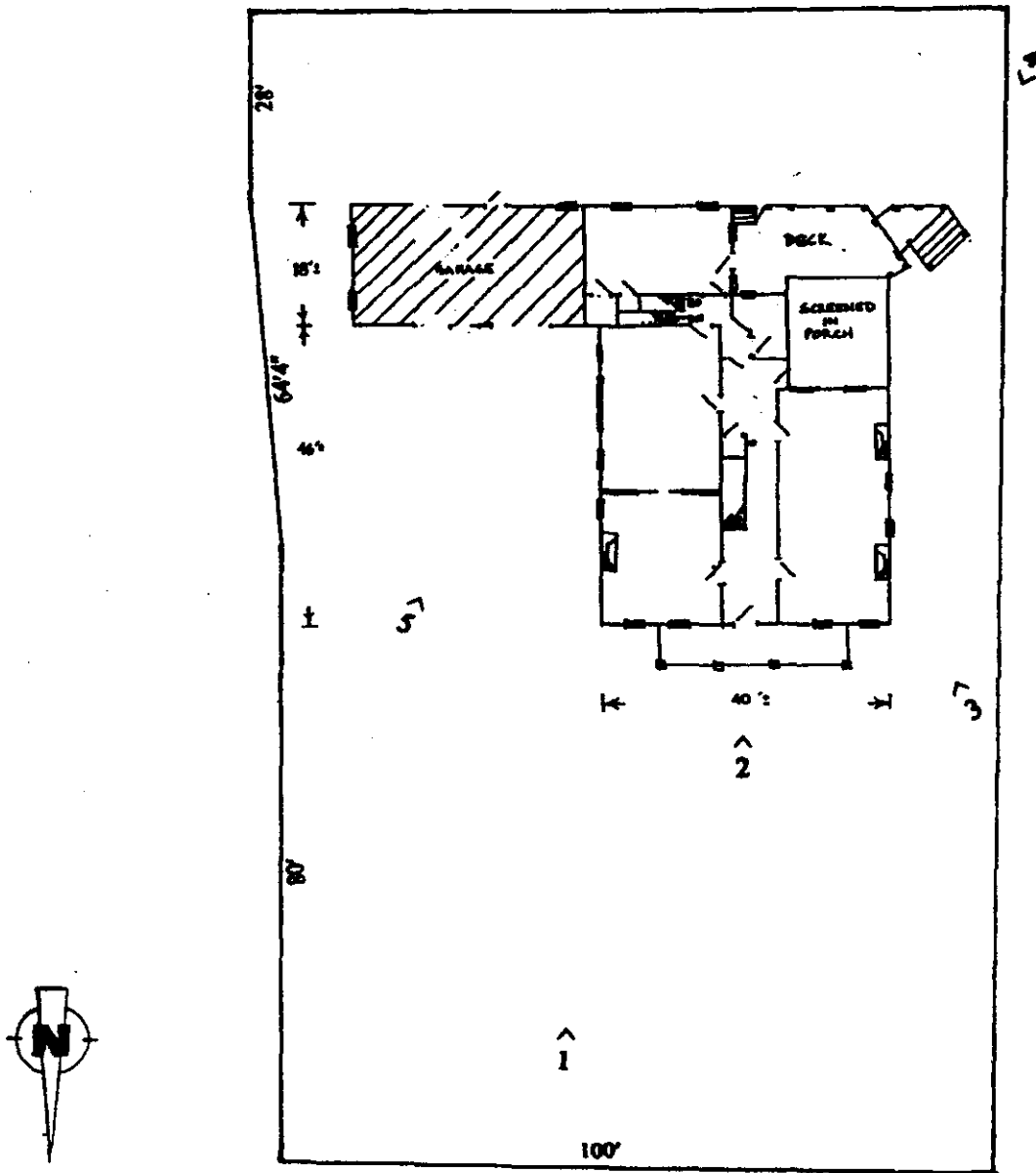
United States Department of the Interior
National Park Service

National Register of Historic Places
Continuation Sheet

Section number 7 Page 3

Fishback, George W. and Virginia, House
St. Louis County, Missouri
Historic Resources of Kirkwood, Missouri

Figure One. Floorplan and photo key.



440 E. ARGONNE

United States Department of the Interior
National Park Service
National Register of Historic Places
Continuation Sheet

Section number 8 Page 4

Fishback, George W. and Virginia, House
St. Louis County, Missouri
Historic Resources of Kirkwood, Missouri

Summary: The George W. and Virginia Fishback House at 440 E. Argonne, is significant under Criterion C, in the area of ARCHITECTURE, as an excellent example of a high-style Greek Revival house. Its symmetrical facade and monumental pedimented portico, along with an emphasized cornice line with a wide band of trim, are distinctive elements of Property Type A.: Greek Revival Houses. The house meets the registration requirements for that property type set forth in the MPS Cover document "Historic Resources of Kirkwood, Missouri," and falls under the context "The Creation of Kirkwood, a Planned Railroad Suburb--1851-1864." Although the house was actually built just after the end of that contextual period, it is nonetheless a good reflection of the building practices which were dominant during that first period of development. This very intact house is one of very few high-style examples of the Greek Revival Houses property type left in the historic core of Kirkwood. It was built ca. 1867 for George and Virginia Fishback, who, like most of Kirkwood's first residents, moved there from St. Louis. George Fishback was part owner and managing editor of the Missouri Democrat at the time he and his wife had this house built. The period of significance for the property runs from the original construction date of ca. 1867, to ca. 1900, by which time the rear addition had been built. The house is in excellent condition, and exhibits a high degree of integrity of location, design, materials, workmanship, feeling and association.

ELABORATION: The Fishback house is a highly intact, representative example of the Greek Revival Houses property type.¹ The house is an intact high-style Greek Revival residence, which is rare in Kirkwood. The two-story frame house with clapboard walls displays many of the features common to this style, such as a symmetrical facade, a low-pitched gable roof with a wide ornamental cornice under the eaves, and multi-light double hung windows flanked by louvered shutters. The monumental front portico, which may be the only one of its type and age in Kirkwood, is of special note. The classical influence which defines the Greek Revival style is evident in many of the house's design details, including the dentils under the eaves, the elaborately rendered porch details, and the full-height corner pilasters. Although more typical of Italianate houses than Greek Revival the scrolled brackets of this house, are set above the porch columns and pilasters to give a general impression of Corinthian capitols.

This house was built for George W. and Virginia W. Fishback in late 1867 or early 1868. George W. Fishback came to St. Louis from Ohio in 1854 to practice law. However, he instead became a reporter for the Evening News and the St. Louis Intelligencer. Fishback transferred to the Missouri Democrat, and in 1855, became part owner of that newspaper. That same year, he married

¹ See MPS Cover document "Historic Resources of Kirkwood, Missouri, Section F, Associated Property Types," for more discussion of the Greek Revival Houses property type.

United States Department of the Interior
National Park Service

National Register of Historic Places
Continuation Sheet

Section number 8 Page 5

Fishback, George W. and Virginia, House
St. Louis County, Missouri
Historic Resources of Kirkwood, Missouri

Virginia Welton of Kentucky. They later had two sons.

In 1867, Virginia Fishback was the purchaser of record of Lots #6 and #7 in East Kirkwood.² This comprised the entire block. The house occupied the entire city block at least through the early twentieth century; the 1909 Atlas map of Kirkwood shows that it was still the only house on the block at that time, as does the 1926 Sanborn map. The Fishbacks apparently began building their Kirkwood house the same year they bought the land. By the time the printing of the 1868 Edward's Annual Directory of St. Louis was completed, they had moved to this residence.

George W. Fishback became the sole owner of the Missouri Democrat in 1872. In 1875, he sold the paper to McKee and House, who consolidated the Missouri Democrat with the Globe, becoming the Globe-Democrat. The Fishbacks sold this residence in 1884 to Mary E. MacAdam, wife of David H. MacAdam, and they still owned it when the 1893 Atlas map was published. By 1909, the block belonged to R. F. Collins.

The house continues to operate in its original single family function, and appears today very much as it did when the Fishbacks called it home. It is little changed, and in excellent condition. It exhibits a high level of integrity and craftsmanship, and is a rare, significant, example of the Greek Revival House property type in Kirkwood. △

² St. Louis County Recorder of Deeds, Book 344, p. 403.

United States Department of the Interior
National Park Service
National Register of Historic Places
Continuation Sheet

Section number 9 Page 6

Fishback, George W. and Virginia, House
St. Louis County, Missouri
Historic Resources of Kirkwood, Missouri

BIBLIOGRAPHY

Dahl, June Wilkinson. A History of Kirkwood, Missouri: 1861-1965. Kirkwood, MO.: The Kirkwood Historical Society, 1965.

Edward's Annual Directory of St. Louis. 1867-1868.

Johnson, Berkeley E. Atlas of St. Louis County. Clayton, MO: C. B. Black, 1893.

Northwest Publishing Company. Plat Book of St. Louis County. Des Moines: IA, Northwest Publishing Company, 1909.

Pitzman, Julius. Atlas of St. Louis City and County, 1878. Philadelphia: A. B. Holcombe and Co., 1878.

Sanborn Fire Insurance Company, Map of Kirkwood, 1926.

St. Louis County Deed Records. Recorder of Deeds Office, Clayton, MO.

**United States Department of the Interior
National Park Service**

**National Register of Historic Places
Continuation Sheet**

Section number 10. photographs Page 7

**Fishback, George W. and Virginia, House
St. Louis County, Missouri
Historic Resources of Kirkwood, Missouri**

Verbal Boundary Description

Part of Lots 1, 2 and 3 of the Hathaway Place a Re-subdivision of Blocks 6 and 7 of East Kirkwood, a Subdivision in St. Louis County, Missouri according to the plat thereof recorded in Plat Book 30, page 34 of the St. Louis County Recorder's office and described as follows: Beginning at a steel rod in the South line of Argonne Drive (60 feet wide) said steel rod being distant 15 feet West of the Northeast corner of said Lot 2 of Hathaway Place (as measured on the South line of Argonne Drive); thence North 89 degrees 07 minutes West along the South line of Argonne Drive a distance of 155 feet to a steel rod said steel rod being distant 20 feet East of the Northwest corner of said lot 3 (as measured along the South line of Argonne Drive); thence South along a line being distant 20 feet East of and parallel to the West line of said Lot 3, a distance of 160 feet more or less to a steel rod in the South line of said Lot 3; thence South 89 degrees 07 minutes East along the South line of Lot 3 a distance of 55 feet to the Southeast corner of said Lot; thence South along the West line of said Lot 2, 10 feet to the Southwest corner thereof; thence South 89 degrees 07 minutes East along the South line of Lots 2 and 1, a distance of 116 feet to a steel rod in the South line of Lot 1, said last mentioned steel rod being distant 1 foot East of the Southwest corner of Lot 2; thence North along a line being distant 1 foot east of and parallel to the East line of said Lot 2, a distance of 28 feet more or less to a steel rod; thence North 14 degrees 25 minutes West a distance of 64.27 feet to a steel rod; thence Northwardly a distance of 80 feet to the point of beginning, having a total acreage of 0.421 acres.

Boundary Justification

The current boundaries encompass all of the land currently associated with the house.

Photographs

The following information is the same for all photographs:

Fishback, George W. and Virginia, House

440 E. Argonne St.

Kirkwood, St. Louis County, MO

1, taken by Debbie Sheals, 406 West Broadway, Columbia, MO 65203; date: 2002

2-8, taken by Linda Stockmann, 139 South Kirkwood Rd, Kirkwood, MO, 63122; date: 1990

(The house was field checked in 2002 to ensure the 1990 photos are still accurate.)

Negatives are on file with the City of Kirkwood Dept of Planing and Development, 139 South Kirkwood Road, Kirkwood, MO 63122, 314-822-5808.

List of Photographs

See photo key for indication of camera angles.

1. Facade, north elevation.
2. Detail, entrance.
3. Northwest corner.
4. Southwest corner.
5. Garage and east elevation.
6. Stair hall, with newel post.
7. Mantel.
8. Interior window detail.

United States Department of the Interior
National Park Service
National Register of Historic Places
Continuation Sheet

Section number 11 Page 8

Fishback, George W. and Virginia, House
St. Louis County, Missouri
Historic Resources of Kirkwood, Missouri

11. Form Prepared By

Name Linda Stockman
organization Kirkwood Landmark Commission date 1990
street & number 139 South Kirkwood Road telephone (314) 822-5808
city or town Kirkwood state Missouri zip code 63122

Name Deon K. Wolfenbarger
organization Three Gables Preservation date 1992
street & number 9550 N.E. Cookingham Drive telephone (816) 792-1275
city or town Kansas City state Missouri zip code 64157

Name Debbie Sheals
organization Independent Contractor date May, 2002
street & number 406 West Broadway telephone 573-874-3779
city or town Columbia state Missouri zip code 65203





4
4
0











