

# Prairie State Park's

## Tallgrass Tribune

Fall 2018

Missouri State Parks

### Prairie State Park's Mission Statement

To preserve and interpret the largest remaining example of original tallgrass prairie in Missouri. The park further provides healthy outdoor recreation for all visitors. The park is dedicated to sustaining a large tallgrass prairie in its native form for future generations to learn from and enjoy.

### Prairie Fall Colors

Dana Hoisington

Fall on the prairie is a time of dazzling colors all vying for your attention; colors that can be every bit as spectacular as in the Ozarks or even back East. There are few trees on the prairie to obstruct your view of all the colors, too.

The prairie paints its fall landscape with a wondrous color palette that seems never-ending. There are yellows of sunflower, goldenrod, and bur marigold. These are accentuated by the blues, whites, and purples of asters and the reds and purples of sumac. Don't forget the amber, gold, and bronze of the prairie grasses. And not just colors, but countless shades of each. Deep blue? Yup, and we have light blue, too. Just in case you were wondering, the rainbow's sacred red, orange, yellow, green, blue, indigo and violet can also be found on the prairie. To see it all, you might have to lower your view, but certainly not your expectations.

The prairie grasses and wildflowers have reached their maximum height, with some towering more than 10 feet tall! Others are hiding deep in the grass only a few inches tall, like a treasure you must seek.

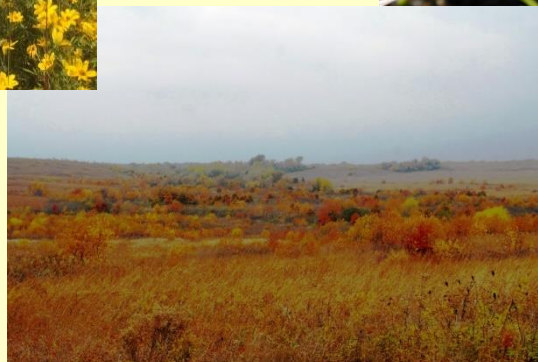
The next time you visit Prairie State Park, why not get a trail map and go on a treasure hunt?



Bur marigold,  
Indian grass and  
big bluestem



Downy gentian



Fall scene at  
Prairie State  
Park



## ~Mystery Item ~ Bison Horn Cap

We had a few guesses on last issue's photo, but no correct ones. This is a close-up of a weathered bison horn cap. The horn cap is composed of a protein called keratin, the same material as hair and fingernails. As it dries, it begins to flake off like this. On the live animal and when kept out of the weather, horn caps have a very smooth and shiny look and feel.

**Last Issue's Photo**



**Original Photo**

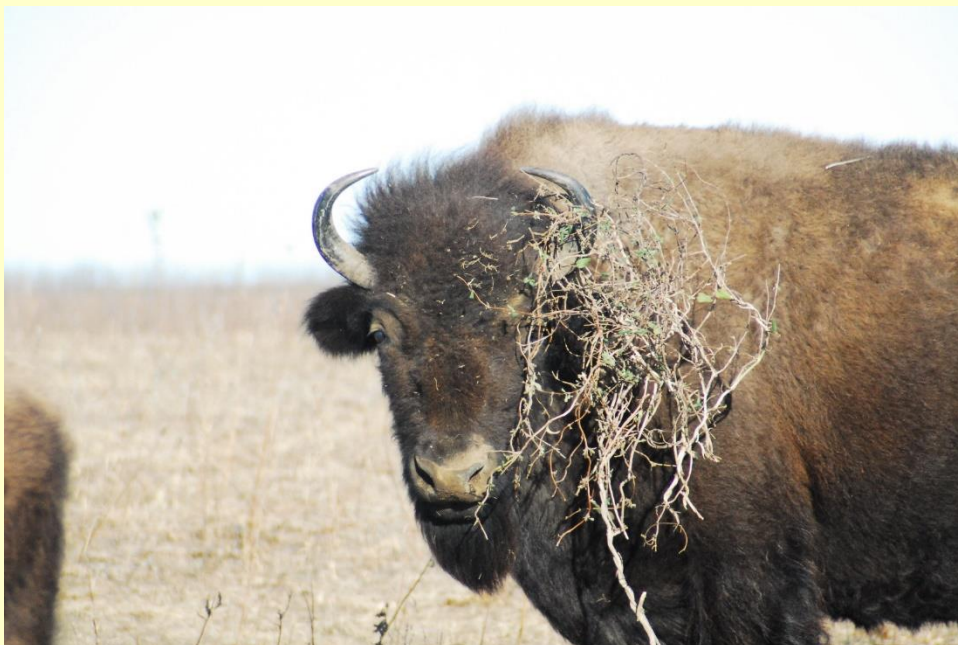


Horn caps were very important to the bison for defense and establishing dominance in the herd. Native Americans had many uses for them as well. The horn caps could be shaped into many different tools to help people survive. To make different items, the horn caps were heated with steam or hot water to make them soft and malleable. They could then be cut and shaped as needed. As you can see, they made great bowls, spoons, ladles, and drinking cups.



## ~Caption This Photograph ~

Give us your best family-friendly caption for this photograph.



Send them to [prairiestatepark@dnr.mo.gov](mailto:prairiestatepark@dnr.mo.gov) and the best ones will be published in the next newsletter.

# Hey Kids!

## Fall Flowers

A H T M J J S N Z I L S N D G E R M B W Z H D D C  
C I M A V F Z W R S S N O D S N I X A F R O L R A  
M J N W L D L O E A T R V O Q S K T X O E A O A R  
S Q X U R L N A R E N I R W S U E S S G T R G E D  
A D Z A T W T G J E T M F O O R T E V F S Y I B I  
W V O X E E N H D H I B U F H F V Q D R A V R N N  
T M K E I A P L I R Z R L O G E K Z E U C E A W A  
O X D K I X O Y P S I M R A R O U D E I I R M O L  
O S Z D O G I G R G T E V B C I L H W T T V R R F  
T L N T L C N W O I H L E N O K P D L A A A U C L  
H I E L N I M L X O A N E Z H L E U E N M I B E O  
S N A R N P D X U R A H R H Q L V Y W N O N V T W  
U T G E R E B N Y S H O W Y G O L D E N R O D I E  
N S V W N O D W I L L O W A S T E R J D A O G H R  
F E K R A T S G N I Z A L B H G U O R Z S M D W Q  
L D O Y E Y A D R E W O L F N U S Y H S A U W C H  
O D B L B T L I O F E R T K C I T O T J M A S A J  
W L B L D L S W R O S I N W E E D V P E V J E A X  
E A Y W U Z U A D O W N Y G E N T I A N S P J L N  
R E W J T E N E E I S T Q C C I H A Y W Y E K S E  
A R V D C U S I A S P B E F O S M P I F Q K N D D  
R J Z J X Q J A U S L D T L Y H X V R T A Q G O Y  
U K T I W Q Q H G Z T A C O O S Y U Q A J B J X B  
A R I Z R Q X C E E Z E F S P I C E S R P Z D Y H  
G N X A E P E G D I R T R A P S V D E E W M U G Q

AROMATIC ASTER

BLUE SAGE

BUR MARIGOLD

DOWNY GENTIAN

FALSE ASTER

GAURA

HAIRY PETUNIA

INDIAN GRASS

JEWELWEED

PARTRIDGE PEA

ROSINWEED

SAWTOOTH SUNFLOWER

SHOWY GOLDENROD

STIFF GOLDENROD

TALL GOLDENROD

TICK TREFOIL

WATER HOREHOUND

WILLOW ASTER

ASHY SUNFLOWER

BONESET

CARDINAL FLOWER

EVENING PRIMROSE

FOG FRUIT

GUMWEED

HOARY VERVAIN

IRONWEED

MISSOURI GOLDENROD

ROSE VERBENA

ROUGH BLAZING STAR

SCURFY PEA

SKY BLUE ASTER

SWEET BLACKEYED SUSAN

TALL THISTLE

VIOLET WOOD SORREL

WHITE CROWNBEARD



# Prairie Jubilee Schedule

## **Scheduled Activities:**

### **Guided Bird Hikes**

10am, 11am, 12 pm and 1pm – *Meet at the Get in Touch with Nature tent.*

### **Walk About Magic Shows – The Instars**

10:30 am and 1:00 pm

### **Butterfly Magic**

**Featuring the Instars**

11:00 am and 1:30 pm – Main Stage

### **Regal Tallgrass Prairie Nature Center – 30 years**

A look back at the last 30 years.

### **MO State Parks Shoestring Band**

12:30 pm and 3 pm

In front of main stage

### **Bison BBQ Lunch**

11am-1pm – Available for a small fee

Pie and drink are also available

Seating in large tent

### **Bison Chip Throwing Contest**

2 pm-3 pm – Behind Nature Center

## **All-Day Activities:**

### **Guided rides to view the bison**

10:00 am - 3:30 pm – Register at table north of Nature Center

#### **Living History Loop includes:**

- Spinning wool
- Civil War hospital steward
- Tinsmith
- Atlatl throwing
- Cowboys and wagons
- Buffalo hunter camp
- Bison Pieces and Poop
- One room school house
- Twine making

#### **Get InTouch with Nature Tent:**

- Reptiles and Amphibians
- Missouri Mammals
- MO Dept. of Conservation
- Face painting
- MO Prairie Foundation
- Make faux trade beads
- Digital scavenger hunt
- Missouri Wildflower Nursery
- Chert Glades Master Naturalists
- Bison/sunflower cut-out photo station



*Missouri State Parks – a division of the  
Missouri Department of Natural Resources*

## **2018 Calendar of Events**

**~Activities will meet at the Regal Tallgrass Prairie Nature Center ~**

**September 8, 10 a.m.**

### **\*Bison Hike**

Fall is nearly upon us, and the prairie is reaching its full height. Some grasses and wildflowers reach more than eight feet tall – You could overlook a bison in there! Come out to the park for a guided bison hike to see what the late-summer prairie has to show. Don't forget your cameras! Be prepared for a two-mile hike over uneven terrain. **Please call 417-843-6711 to register by Sept. 1.**

**September 29, 10 a.m. – 4 p.m.**  
**Prairie Jubilee**

This is our signature special event. Come out and see how historical and natural history shaped the prairie. Activities include:

- Tours to see the bison
- Entertainment by The Fishin' Magicians
- Guided bird hikes
- Twine making
- Reptiles and amphibians
- Buffalo hunter camp
- Native plant sale
- Pollinators
- Bison chip throwing contest
- Pulled bison lunch for a small fee

**\*October 10, 6:30 – 7:30 p.m.**  
**The Prairie at Night**

Learn what goes on "after hours" on the prairie. A whole new world of sounds, smells, and sights open up and a suite of plants and animals emerge. **Please call 417-843-6711 to register by Oct. 3.**

**October 12, 9:30 – Noon HS**  
**\*Wild About Elk**

Elk once were an important part of prairie life. Learn how these majestic animals live, their habits, and needs in this program on Missouri's largest cervid. **Please call 417-843-6711 to register by Oct. 5.**

**November 3, 10 a.m. – 3 p.m.**  
**\*National Bison Day**

On May 9, 2015, President Barack Obama signed the National Bison Legacy Act, making the bison America's official national mammal to be celebrated the first Saturday of November. Prairie State Park will mark this momentous occasion with a day-long celebration. There will be guided bison hikes at 10 a.m. and 1 p.m., bison chili at noon, and educational activities throughout the day. Learn how the Native Americans utilized this animal for food, shelter and tools, and how such an iconic animal was driven to the brink of extinction. **Please call 417-843-6711 to register for one of the hikes by Oct. 27.**

**November 9, 9:30 – Noon HS**  
**\*Big Cats**

Missouri is home to two native cats. Explore their life history, habits, habitat needs, and their role as predators. **Please call 417-843-6711 to register by Nov. 2.**

**December 1, 1 p.m.**  
**\*Bison Hike**

Winter is fast approaching, but the bison don't care. Their fur coat will keep them toasty warm from winter's biting temperatures and fierce north winds. But you better dress warm! **Please call 417-843-6711 to register by Nov. 24.**

**December 15, 10 a.m.**  
**\*A Very Prairie Christmas**

Based on the *Little House on the Prairie* book by Laura Ingalls Wilder, see what Christmas was like in the 1800s. Receive a special 1800s-era gift to take home. Space is limited to 35. **Please call 417-843-6711 to register by Dec. 8.**

### **Nature Bingo**

10 a.m. on the fourth Saturday of the month:

- September 22
- October 20
- November 24
- December 22

**\* Denotes preregistration required.**  
**HS Denotes homeschool programs.**



Check out our Facebook page for photos, interactive posts, information on upcoming programs and events.  
Give us a "like".  
<https://www.facebook.com/PrairieStatePark>

Prairie State Park, 128 N.W. 150<sup>th</sup> Lane  
Mindenmines, MO 64769  
[priariestatepark@dnr.mo.gov](mailto:priariestatepark@dnr.mo.gov)  
417-843-6711