

Prairie State Park's

Tallgrass Tribune

Fall 2015

Missouri State Parks

Prairie State Park's Mission Statement

To preserve and interpret the largest remaining example of original tallgrass prairie in Missouri. The park further provides healthy outdoor recreation for all visitors. The park is dedicated to sustaining a large tallgrass prairie in its native form for future generations to learn from and enjoy.

Join the Stampede!

Prairie State Park will host a 5K Trail Run Saturday, Oct. 17, 2015! The race begins at 9 a.m. at the Regal Tallgrass Prairie Nature Center. The race will be on Drover's Trail and will end back at the nature center. Awards are available after the race for each age division and overall finishers. Refreshments will also be available.

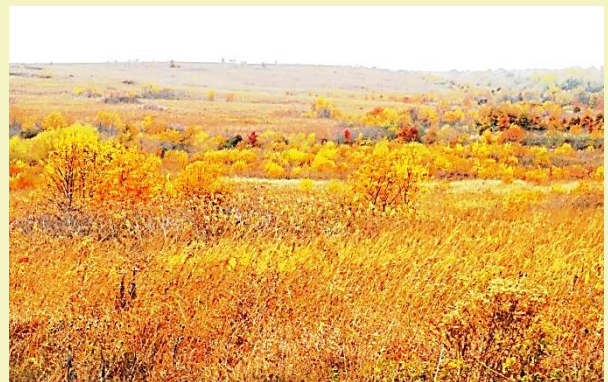
This is one in a series of races hosted by Missouri State Parks. Come on out and support parks, get some exercise, and see a beautiful prairie in the fall. This is a unique opportunity to run through a tallgrass prairie.

Follow the link to register.

<https://runsignup.com/Race/MO/Mindenmines/PRAIRIESTATEPARKSTAMPEDE>



Downy gentian



The bison will be in our corral getting ready for their annual veterinary check ups. However, there may be a few that will not be in the corral so be aware. If you do encounter bison, stay at least 100 yards from them. If you are closer than that, stop and slowly walk away from them. Do not approach. Do not run. Bison can run 35 mph and you can't. Running increases the likelihood of getting chased. It is more important to be safe than it is to win a race.

**~Mystery item ~
Still a mystery??**

There were no correct submissions for our mystery item. Here are a few clues to see if you can figure it out this time.

It is an egg mass.

When they hatch in the spring, some may feed on one another.

They are very stealthy predators on invertebrates and other small animals.

They have excellent vision.

The larger female may eat the male.

They can fly.

They have great camouflage and use it to ambush prey.

Some people buy these egg masses to put in their garden.

They look as though they are in church.

Summer is waning, but this will be with us over the winter. What is it?



Send your answer to prairie.state.park@dnr.mo.gov and the person with the first correct answer will be listed in the next newsletter.

Calendar of Events

~Activities will meet at the nature center ~

Sept. 5, 10 a.m.

Bison Hike

It is time for the bison rut. Be prepared for two-mile hike. Insect repellent, water, snacks, sunscreen, and closed toed shoes are recommended.

Sept. 11, 9:30 a.m.-noon

***Creek study - HS**

Learn what lives in the water around us and the importance of clean water. You will do some seining, netting, identification and categorizing what we find in the creek.

Sept. 12, 2 p.m.

***Creek study**

Learn what lives in the water around us and the importance of clean water. You will do some seining, netting, identification and categorizing what we find in the creek.

Oct. 2, 7 p.m.

***Nature at Night**

Go on a night hike and learn how animals communicate and more. Bring a flashlight on this nighttime adventure.

Oct. 3, 2 p.m.

Nature Bingo

Come and play this fun, interactive game and learn about Missouri animals and plants. Prizes will be awarded.

Oct. 17, 9 a.m.

Prairie State Park Stampede 5K Trail Race

See description in main article.

<https://runsignup.com/Race/MO/Mindenmines/PRAIRIESTATEPARKSTAMPEDE>

Nov. 7, 10 a.m.

National Bison Day Bison Hike

Fall is here! Come out and enjoy the cooler temperatures as you hike out to see the bison. Be prepared for two-mile hike. Insect repellent, water, snacks, sunscreen, and closed toed shoes are recommended. Don't forget your camera!

Nov. 20, 9:30 a.m. - noon

***Autumn on the Prairie- HS**

Fall on the prairie signals different things for different plants and animals. Some hibernate, others migrate, and some are here and active year round. We will do some population dynamics, discuss how animals cope with cooling temperatures, and learn about frost and frost flowers!

Nov. 21, 9:30 a.m. - noon

***Autumn on the Prairie**

Fall on the prairie signals different things for different plants and animals. Some hibernate, others migrate, and some are here and active year round. We will do some population dynamics, discuss how animals cope with cooling temperatures, and learn about frost and frost flowers!

Dec. 5, 1 p.m.

Bison Hike

Old Man Winter is just around the corner! Join us for a hike out to see the bison. Be prepared for two-mile hike. Water, snacks, repellent and sunscreen are recommended. Don't forget your camera!

HS denotes homeschool program.

***Registration is required.**

Please call 417-843-6711 to register.

Hey Kids!

Fall will be here soon! When you think of fall colors, most usually think of trees, but the colors of the native grasses on the tallgrass prairie can be special as well. You are invited to come out and experience them for yourself. In the mean time, here is a word search to get you ready!

Name: _____

Created with TheTeachersCorner.net Word Search Maker

Fall Prairie

Find items that remind us that fall is here.

L A Q E E B N N F E O Q C Y E G I U S P D T I R L
Y S C I S S O R T A I L E D F L Y C A T C H E R H
D L W A M L U U G T I N C Z C O O L N I G H T S Z
C V A N F I U O S Q B Z S M G F K R B T S Z P L B
K M M A T Z N U Z U Q U C R N I H T D C T D X S F
D D I G S H T B M N M Z S Q O T K E R S U P E U M
L Z G S I D O Q Q A N A G Q R L K K J I N Y K W X
T A R X R S O I W I O Q C T T E O B R F S E G F O
C A A V B A C R I T X I Q N H J S C Y O R Q A R D
X L T J O S N Z N N X A H A E S T T T Z J T A O A
I C I Z Z T O K P E E C T M R H H X D H G W G S Z
G Q O Z A E I S N G D P G R N U E B X N G Y I T S
M O N V S R T X S Y D L C O H R R Q S Q S I W N F
T B I F M S A S W N R L O D A J U Y D E V C R N L
D H O R C Q N W N W M K R G R C T U E F C G A B N
U N K A M J R V V O Y F S U R O B E E F J E M E L
T F I N W B E Q V D T G I A I Z X M S G O G C Z M
G I C M W P B S G Q S W D E E J U J B I Y X D C J
R N P Q G B I F I U W Y Z X R S E I H U D H U E A
S D X B L S H Y A L A G E L S T R T Y V K Z R A T

GOLDENRODS
SUMAC
FROST
BRIGHTCOLORS
DORMANT
FRUIT

ASTERS
NORTHERNHARRIERS
DEW
MIGRATION
SEEDS
THERUT

DOWNYGENTIAN
SCISSORTAILEDFLYCATCHER
COOLNIGHTS
HIBERNATION
NUTS

National Bison Day

On Nov. 7, Prairie State Park will be joining in the celebration of National Bison Day. The park will have a guided bison hike at 10 a.m. and throughout the day people can come and play games, do bison-related activities, watch the bison video, make a bison mask, and much more. National Bison Day at Prairie State Park will run from 10 a.m. -3 p.m. and is open to all ages. There will be something for everyone to enjoy.

A bill, the National Bison Legacy Act, was put before the U.S. Congress this summer by Missouri Rep. William Lacy Clay to officially make the bison the national mammal of the United States.

114th CONGRESS

1st Session

H. R. 2908

IN THE HOUSE OF REPRESENTATIVES

June 25, 2015

Mr. Clay (for himself, Mr. Fortenberry, Mr. Serrano, Mrs. Noem, Mr. Cramer, Mr. Hanna, Ms. Clarke of New York, Mr. Perlmutter, and Mr. Cleaver) introduced the following bill; which was referred to the Committee on Oversight and Government Reform

A BILL

To adopt the bison as the national mammal of the United States.

Section 1.Short title

This Act may be cited as the "National Bison Legacy Act".

Sec. 2.Findings

Congress finds that—

- (1)bison are considered a historical symbol of the United States;
- (2)bison were integrally linked with the economic and spiritual lives of many Indian tribes through trade and sacred ceremonies;
- (3)there are more than 60 Indian tribes participating in the Intertribal Buffalo Council;
- (4)numerous members of Indian tribes are involved in bison restoration on tribal land;
- (5)members of Indian tribes have a combined herd on more than 1,000,000 acres of tribal land;
- (6)the Intertribal Buffalo Council is a tribal organization incorporated pursuant to section 17 of the Act of June 18, 1934 (commonly known as the "Indian Reorganization Act") (25 U.S.C. 477)
- (7)bison can play an important role in improving the types of grasses found in landscapes to the benefit of grasslands;
- (8)a small group of ranchers helped save bison from extinction in the late 1800s by gathering the remnants of the decimated herds;
- (9)bison hold significant economic value for private producers and rural communities;
- (10)according to the 2012 Census of Agriculture of the Department of Agriculture, as of 2012, 162,110 head of bison were under the stewardship of private producers, creating jobs and providing a sustainable and healthy meat source contributing to the food security of the United States;
- (11)on December 8, 1905, William Hornaday, Theodore Roosevelt, and others formed the American Bison Society in response to the near extinction of bison in the United States;
- (12)on October 11, 1907, the American Bison Society sent 15 captive-bred bison from the New York Zoological Park, now known as the "Bronx Zoo", to the first wildlife refuge in the United States, which was known as the "Wichita Mountains Wildlife Refuge", resulting in the first successful reintroduction of a mammal species on the brink of extinction back into the natural habitat of the species;
- (13)in 2005, the American Bison Society was reestablished, bringing together bison ranchers, managers from Indian tribes, Federal and State agencies, conservation organizations, and natural and social scientists from the United States, Canada, and Mexico to create a vision for the North American bison in the 21st century;
- (14)there are bison herds in National Wildlife Refuges and National Parks;
- (15)there are bison in State-managed herds across 11 States;
- (16)there is a growing effort to celebrate and officially recognize the historical, cultural, and economic significance of the North American bison to the heritage of the United States;
- (17)a bison is portrayed on 2 State flags;
- (18)the bison has been adopted by 3 States as the official mammal or animal of those States;
- (19)a bison has been depicted on the official seal of the Department of the Interior since 1912;
- (20)the buffalo nickel played an important role in modernizing the currency of the United States;
- (21)several sports teams have the bison as a mascot, which highlights the iconic significance of bison in the United States;
- (22)in the 2nd session of the 113th Congress, 22 Senators led a successful effort to enact a resolution to designate November 1, 2014, as the third annual National Bison Day; and
- (23)members of Indian tribes, bison producers, conservationists, sportsmen, educators, and other public and private partners have participated in the annual National Bison Day celebration at several events across the United States and are committed to continuing this tradition annually on the first Saturday of November.

Sec. 3.Establishment and adoption of the North American bison as the national mammal

The mammal commonly known as the "North American bison" is adopted as the national mammal of the United States.

Fall Homeschool Programs 2015

Creek Study

Sept. 11, 9:30 a.m.– Noon

The class will study life in a creek -- what lives there, and what is good and bad for them. Bring a change of clothes as you will be getting in the creek. Bring a picnic lunch and we will eat in the picnic area afterwards. Don't forget your nature journals!

Nature at Night

Oct. 2, 7 p.m.

Get ready to learn about life on the prairie as the sun goes down. Lightning bugs, bats, owls and other interesting creatures will be the focus of this evening activity. Bring a flashlight!

Autumn on the Prairie

Nov. 20, 9:30 a.m.–Noon

Fall on the prairie signals different things for different plants and animals. Some hibernate, others migrate, and some are here and active year round. The class will learn about population dynamics, how animals cope with cooling temperatures, and about frost and frost flowers!

PLEASE READ CAREFULLY!

Complete the form for **each program** (copy as needed). Please register **every person** that will attend.

Each family must pre-register for each program with a \$4 deposit (per family). The money will be returned upon your participation in the program. Unclaimed funds will become a donation to the park. You may mail in your registration anytime after you receive this notice. You must **pay by cash or check for each session separately** (i.e., three checks for three programs). Checks will be held until the date of the program. **Make checks payable to State of Missouri/DNR.** No telephone or email registrations will be taken.

PROGRAM REGISTRATION

deadline is Sept. 4, 2015! After that date, call to see if there are openings for the programs.

You are enrolled **unless your deposit is returned to you.** **If you cannot attend a program, please notify the park;** supplies are purchased for nearly every program. In case of inclement weather, call 417-843-6711 to check status of the programs. In most cases, we cannot reschedule the program. Your fee for that program will become a donation.

PROGRAM (Circle correct one) Creek Night Autumn
CHECK _____ CASH _____ NUMBER ATTENDING _____

PARENT'S NAMES _____

ADDRESS _____

CITY _____ STATE _____ ZIP _____

PHONE _____ E-MAIL _____

CHILDREN'S NAMES and AGES _____

Fall comes to the Prairie



Photo by Rebecca Knox

Prairie Autumn Jewels

By Rebecca Knox

As warm summer days wane into fall on the prairie, many changes are taking place. Tall grasses, now in their full height of up to 9 feet tall, stand as sentinels on guard, awaiting that first icy blast that will announce that winter is coming soon. Among the grasses wildflowers dance and sway in the autumn breeze, soaking up those last long rays of sun, enjoying them while they can. Showy goldenrod, smooth sumac and southern prairie aster display themselves in brilliant color. Deep golden yellows, fiery reds, and deep purples make a vibrant backdrop of green-fading-to-brown, red, and bronze prairie grasses.

Amid the tall grasses and prairie forbs, in a world completely unseen by most, lives a whole host of tiny wildlife busily preparing for the long winter ahead. Some prepare to take flight, making their way farther south until spring calls them back again, while others prepare to hunker down to live underground until warmer days prevail. Still others live life to the fullest, totally unaware of the fact that, with the promise of the coming winter, their short lives are nearly over. Among those many tiny and varied animals of the prairie is the spider.

Even though there are over 2.5 million of them per square acre, spiders pretty much go unnoticed amid the tall grasses. But, as warm days give way to chilly nights, something extraordinary happens. On cool, misty, autumn mornings, dew hangs heavy on every spider's web. The webs are outlined in tiny droplets of water that shine and glisten like beautiful strands of sparkling diamonds in the morning sun. There are, literally, millions of them!

In the center of most webs sits its maker...the master craftsman, the builder of each of these amazing, beautiful, and complex houses of doom...the spider. If you've not beheld the beauty of autumn on the tallgrass prairie, I'd like to encourage you to come out and enjoy a hike at the park. Plan to come early so you can experience the intricate beauty spun by some of nature's tiniest and most fascinating creatures bedecked in their dewy array of glistening autumn jewels.



Check out our Facebook page for photos, interactive posts, information on upcoming programs and events.

Give us a "like".

<https://www.facebook.com/PrairieStatePark>

Prairie State Park, 128 N.W. 150th Lane
Mindenmines, MO 64769

prairie.state.park@dnr.mo.gov

417-843-6711