

United States Department of the Interior  
National Park Service

# National Register of Historic Places Registration Form

This form is for use in nominating or requesting determinations for individual properties and districts. See instructions in *How to Complete the National Register of Historic Places Registration Form* (National Register Bulletin 16A). Complete each item by marking "x" in the appropriate box or by entering the information requested. If an item does not apply to the property being documented, enter "N/A" for "not applicable." For functions, architectural classification, materials, and areas of significance, enter only categories and subcategories from the instructions. Place additional entries and narrative items on continuation sheets (NPS Form 10-900a). Use a typewriter, word processor, or computer, to complete all items.

## 1. Name of Property

historic name Ewich, Robert, Farmstead  
other names/site number N/A

## 2. Location

street & number 5336 Hackman Road  not for publication  
city or town Augusta  vicinity  
state Missouri code MO county St. Charles code 183 zip code 63332

## 3. State/Federal Agency Certification

As the designated authority under the National Historic Preservation Act, as amended, I hereby certify that this  nomination  request for determination of eligibility meets the documentation standards for registering properties in the National Register of Historic Places and meets the procedural and professional requirements set forth in 36 CFR Part 60. In my opinion, the property  meets  does not meet the National Register criteria. I recommend that this property be considered significant  nationally  statewide  locally. ( See continuation sheet for additional comments.)

Claire F. Blackwell 7 December 1994  
Signature of certifying official/Title Deputy SHPO Date  
Missouri Department of Natural Resources  
State of Federal agency and bureau

In my opinion, the property  meets  does not meet the National Register criteria. ( See continuation sheet for additional comments.)

\_\_\_\_\_  
Signature of certifying official/Title Date  
\_\_\_\_\_  
State or Federal agency and bureau

## 4. National Park Service Certification

I hereby certify that the property is:

<input type="checkbox"/> entered in the National Register. <input type="checkbox"/> See continuation sheet.	_____ Signature of the Keeper	_____ Date of Action
<input type="checkbox"/> determined eligible for the National Register <input type="checkbox"/> See continuation sheet.	_____	_____
<input type="checkbox"/> determined not eligible for the National Register.	_____	_____
<input type="checkbox"/> removed from the National Register.	_____	_____
<input type="checkbox"/> other, (explain): _____	_____	_____

Ewich, Robert, Farmstead

St. Charles Co., MO

Name of Property

County and State

5. Classification

Ownership of Property

(Check as many boxes as apply)

- private
- public-local
- public-State
- public-Federal

Category of Property

(Check only one box)

- building(s)
- district
- site
- structure
- object

Number of Resources within Property

(Do not include previously listed resources in the count.)

Contributing	Noncontributing	
2	0	buildings
		sites
		structures
		objects
2	0	Total

Name of related multiple property listing

(Enter "N/A" if property is not part of a multiple property listing.)

Number of contributing resources previously listed in the National Register

Historic Resources of Augusta, MO

0

6. Function or Use

Historic Functions

(Enter categories from instructions)

AGRICULTURAL/Agricultural outbldg.

DOMESTIC/single dwelling

Current Functions

(Enter categories from instructions)

VACANT/NOT IN USE

DOMESTIC/single dwelling

7. Description

Architectural Classification

(Enter categories from instructions)

no style

Materials

(Enter categories from instructions)

foundation stone

walls brick

wood

roof asphalt

other concrete

Narrative Description

(Describe the historic and current condition of the property on one or more continuation sheets.)

Ewich, Robert, Farmstead

Name of Property

St. Charles Co., MO

County and State

8. Statement of Significance

Applicable National Register Criteria

(Mark "x" in one or more boxes for the criteria qualifying the property for National Register listing.)

- A Property is associated with events that have made a significant contribution to the broad patterns of our history.
B Property is associated with the lives of persons significant in our past.
C Property embodies the distinctive characteristics of a type, period, or method of construction or represents the work of a master, or possesses high artistic values, or represents a significant and distinguishable entity whose components lack individual distinction.
D Property has yielded, or is likely to yield, information important in prehistory or history.

Criteria Considerations

(Mark "x" in all the boxes that apply.)

Property is:

- A owned by a religious institution or used for religious purposes.
B removed from its original location.
C a birthplace or grave.
D a cemetery.
E a reconstructed building, object, or structure.
F a commemorative property.
G less than 50 years of age or achieved significance within the past 50 years.

Areas of Significance

(Enter categories from instructions)

ETHNIC HERITAGE: EUROPEAN

Period of Significance

ca. 1865

Significant Dates

ca. 1865

Significant Person

(Complete if Criterion B is marked above)

n/a

Cultural Affiliation

n/a

Architect/Builder

unknown

Narrative Statement of Significance

(Explain the significance of the property on one or more continuation sheets.)

9. Major Bibliographical References

Bibliography

(Cite the books, articles, and other sources used in preparing this form on one or more continuation sheets.)

Previous documentation on file (NPS):

- preliminary determination of individual listing (36 CFR 67) has been requested
previously listed in the National Register
previously determined eligible by the National Register
designated a National Historic Landmark
recorded by Historic American Buildings Survey
recorded by Historic American Engineering Record

Primary location of additional data:

- State Historic Preservation Office
Other State agency
Federal agency
Local government
University
Other

Name of repository:

Ewich, Robert, Farmstead

Name of Property

St. Charles Co., MO

County and State

10. Geographical Data

Acreege of Property 4.92

UTM References

(Place additional UTM references on a continuation sheet.)

1	15	684	865	427	154	0
Zone	Easting	Northing				
2						

3						
Zone	Easting	Northing				
4						

See continuation sheet

Verbal Boundary Description

(Describe the boundaries of the property on a continuation sheet.)

Boundary Justification

(Explain why the boundaries were selected on a continuation sheet.)

11. Form Prepared By

name/title Mary Stiritz

organization \_\_\_\_\_ date 5 January 1994

street & number 12 Wydown Terrace telephone 314-721 6289

city or town St. Louis state MO zip code 63105

Additional Documentation

Submit the following items with the completed form:

Continuation Sheets

Maps

A USGS map (7.5 or 15 minute series) indicating the property's location.

A Sketch map for historic districts and properties having large acreage or numerous resources.

Photographs

Representative black and white photographs of the property.

Additional Items

(Check with the SHPO or FPO for any additional items)

Property Owner

(Complete this item at the request of SHPO or FPO.)

name William T. & Joanne H. Fitch

street & number P.O. Box 127 telephone \_\_\_\_\_

city or town Augusta state MO zip code 63332

Paperwork Reduction Act Statement: This information is being collected for applications to the National Register of Historic Places to nominate properties for listing or determine eligibility for listing, to list properties, and to amend existing listings. Response to this request is required to obtain a benefit in accordance with the National Historic Preservation Act, as amended (16 U.S.C. 470 et seq.).

Estimated Burden Statement: Public reporting burden for this form is estimated to average 18.1 hours per response including time for reviewing instructions, gathering and maintaining data, and completing and reviewing the form. Direct comments regarding this burden estimate or any aspect of this form to the Chief, Administrative Services Division, National Park Service, P.O. Box 37127, Washington, DC 20013-7127; and the Office of Management and Budget, Paperwork Reductions Projects (1024-0018), Washington, DC 20503.

United States Department of the Interior  
National Park Service

## National Register of Historic Places Continuation Sheet

Section number 7 Page 1

Ewich, Robert, Farmstead  
Augusta, St. Charles Co., MO  
Historic Resources of Augusta, MO MPS

The Robert Ewich Farmstead is located at 5336 Hackman Road on the east edge of the Town of Augusta, Missouri. The property consists of a ca. 1865 two-story brick house and ca. 1865 board-and-batten barn (Property Type: Vernacular Residence, and subtype: Outbuilding). The house exhibits basic characteristics of the property type including sparse detailing, simple traditional plan and wine cellar; the barn features simple frame construction, and rectangular form characteristic of the agricultural outbuilding subtype. The additions and alterations to the house have not detracted substantially from overall integrity of design and materials, and the barn survives with little evidence of non-historic alteration.

### House:

Facing east, the three-bay, front-gabled, red brick house rises from a stone foundation and measures approximately 30 feet deep (east-west) and 35 feet wide, extended on the south by a one-story brick enclosed-porch addition. The central-passage plan originally featured two rooms on either side of the hall; the plan is now modified by the removal of a partition wall which divided rooms on the southside. Windows are headed with segmental arches installed with double-hung sash with multiple lights. On the primary (east) facade, the front door features a segmentally arched transom light along with sidelights; the center window on the second story has been enclosed in a shallow wood-framed bay which houses a bathroom. Large shed-roof dormers have been added on the north and south slopes of the roof. The three-bay rear (west) elevation has received a small, gable-roofed entry-vestibule addition of brick. At the basement level, running along the north side of the house is a wine cellar; a wide arched entrance on the north wall has been bricked-in; a brick arched passageway leads from the south half of the cellar to the north.

### Barn:

The two-story board-and-batten building is designed with a wide center passageway for wagon entry and is flanked on the east by two-story residential quarters, and on the west by a work area with large hay loft above. Exterior entrances to the living quarters are on the east elevation; a bay window is featured on the north elevation. Six-over-six double-hung sash is installed in most windows. The roof is covered with metal sheathing, and the floor is concrete.

United States Department of the Interior  
National Park ServiceNational Register of Historic Places  
Continuation SheetSection number 8 Page 2Ewich, Robert, Farmstead  
Augusta, St. Charles Co., MO  
Historic Resources of Augusta, MO MPS

The Robert Ewich Farmstead is eligible for listing in the National Register under Criterion A and is significant in the area of ETHNIC HERITAGE:EUROPEAN: German-born Ewich was one of the major wine growers in the Augusta area, and as such contributed to a local industry which was strongly representative of Augusta's German heritage, helping to give the town its distinct identity. The ca.1865 house with wine cellar; ca.1865 barn, (Property Type: Vernacular Residence, and subtype: Outbuilding) together with surrounding vineyard land are directly associated with Ewich's activity as a viniculturalist and evoke the era of the town's primacy in the wine industry.(See Historic Context, "German American Culture in Augusta, 1833-1944" and subtheme, "Wine Industry ca.1850-1917").

According to the 1875 St. Charles County Atlas, Robert Ewich, a native of Prussia, settled in St. Charles County in 1847. By the mid-1850s he was living in the Town of Augusta in a small brick house he had constructed at 221 Lower Street and later sold in 1866, after returning from service as a Union cavalry captain in the Civil War. The 1860 census indicated Ewich was a 43 year old tanner, living with his Prussian-born wife, Aurielie. A deed of 1863 (Book R2, page 149), however, revealed Ewich was already cultivating grapes in partnership with Austrian Ernst Suschitsky on a tract of land where the nominated buildings stand. Ewich's extensive activity as a vintner was confirmed in the 1868 State census which credited him with 2400 gallons of wine for that year; the 1880 Federal Agricultural census in which he reported 3500 gallons produced in 1879 on 5 acres of vineyards; and an item in The St. Charles Demokrat which noted that Ewich anticipated 6000 gallons in 1880.(1) Probate records of 1897 indicated Ewich died in late 1896 or early 1897.

The siting of the house on high ground with a panoramic view "attracted visitors, including county officials [in 1873] who described it as "a marvelous view of forest, hills, and river that we so often heard praised".(2) The red brick house Ewich constructed ca.1865, while exhibiting traditional elements of Missouri German vernacular design such as sparse detail and segmental arches, nonetheless featured advances over Ewich's first house on Lower Street, which was a modest hall-parlor residence.

United States Department of the Interior  
National Park Service

## National Register of Historic Places Continuation Sheet

Section number 8,9,10 Page 3

Ewich, Robert, Farmstead  
Augusta, St. Charles Co., MO  
Historic Resources of Augusta, MO MPS

These advances included a double-pile, central passage plan; a front door fashioned with transom and sidelights; and a spacious wine cellar. The house was apparently well-appointed for an insurance policy of 1870 covered furniture valued at \$500. The board-and-batten barn also indicated Ewich's increased prosperity and status through its size and finish with two-story living quarters on the east side of the center wagonway.

### NOTES

- 1) St. Charles Demokrat, 5 August 1880, quoted in Anita M. Mallinckrodt, Historic Augusta, Its Buildings and People 1820-1900, (Augusta, MO: Augusta Historical Society, 1994), p.56.
- 2) Anita M. Mallinckrodt, Historic Augusta, p.56.

### 9. Major Bibliographical References:

Mallinckrodt, Anita M. Historic Augusta, MO. Augusta, MO: Augusta Historical Society, 1994.

(See Section I of the Multiple Property Document, "Historic Resources of Augusta, Missouri", for additional references.)

### 10. Geographical Data

#### Verbal Boundary Description:

Boundaries are indicated by the heavy broken line on the map entitled, "Architectural Survey of Augusta, Missouri", scale 1" = 100'.

#### Boundary Justification:

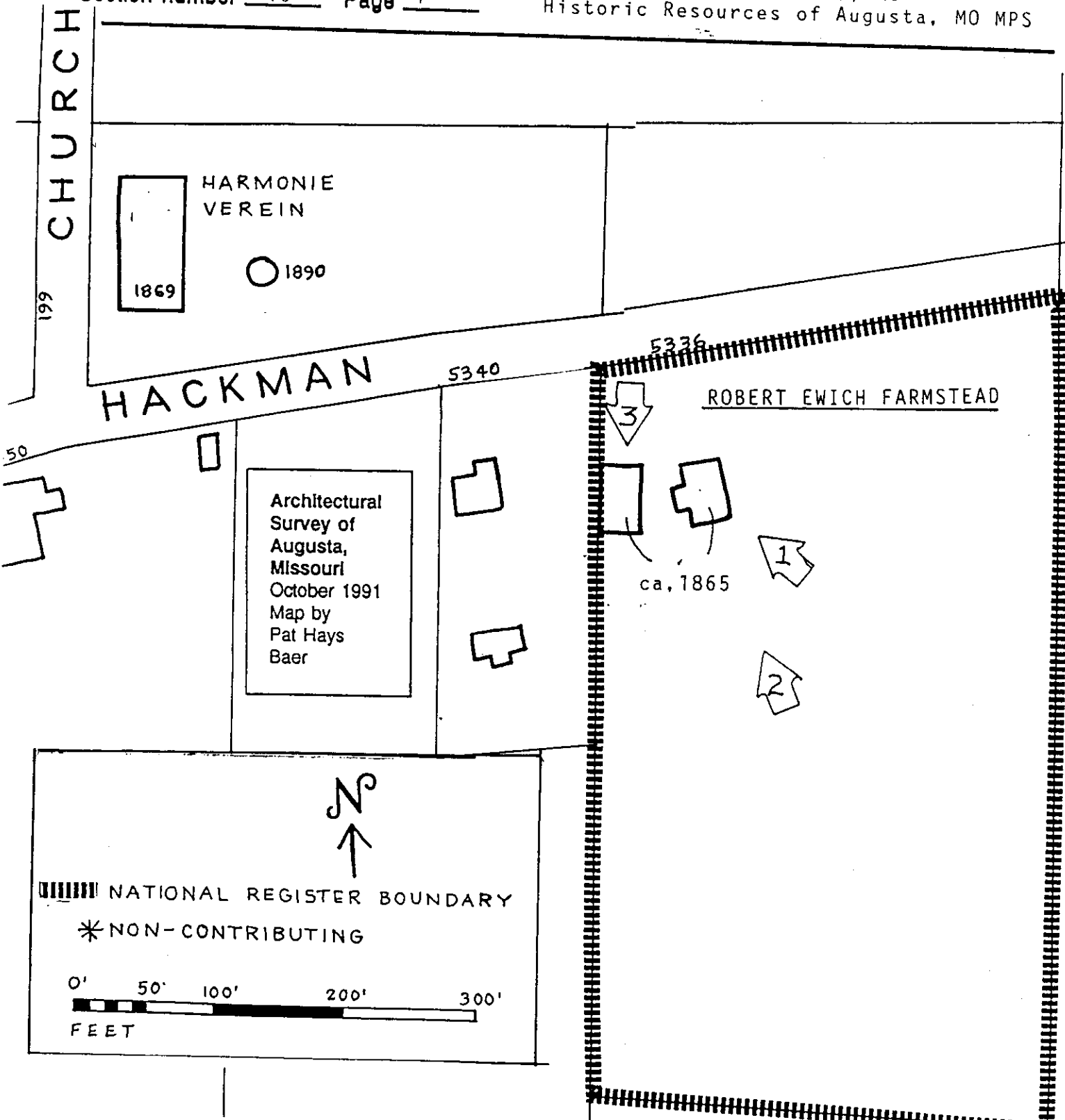
The nominated property includes all land historically associated with it including part cultivated as vineyards.

United States Department of the Interior  
National Park Service

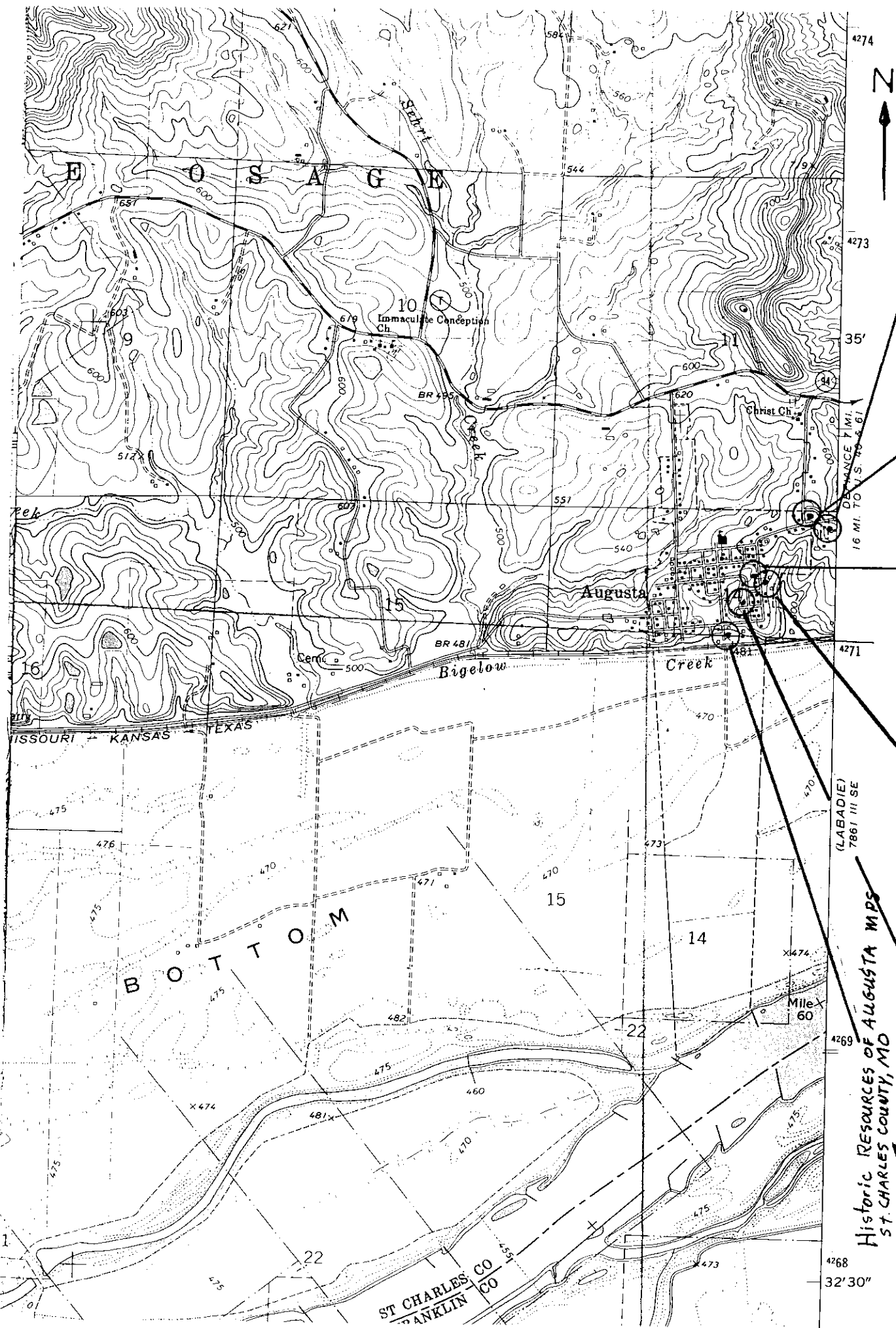
# National Register of Historic Places Continuation Sheet

Section number 10 Page 4

Ewich, Robert, Farmstead  
Augusta, St. Charles Co., MO  
Historic Resources of Augusta, MO MPS







EWICH, ROBERT  
 FAMFSTEAD  
 5336 HACKMAN ROAD  
 AUGUSTA, ST. CHARLES  
 COUNTY, MO  
 15/684865/4271540

AUGUSTA HARMONIE VERBIN  
 NE CORNER HACKMAN +  
 CHURCH ROADS  
 AUGUSTA, ST. CHARLES COUNTY  
 MO  
 15/684770/4271600

GERLING DR.G.L., HOUSE  
 245 LOWER ST.  
 AUGUSTA, ST. CHARLES  
 COUNTY, MO  
 15/684500/4271290

SCHROER, J.F. HOUSE-STORE  
 252 LOWER ST.  
 AUGUSTA, ST. CHARLES COUNTY  
 MO  
 15/684570/4271260

FARRIS CHARLES MCLEE  
 HOUSE  
 5517 HIGH ST.  
 AUGUSTA, ST. CHARLES  
 COUNTY MO  
 15/684460/4271160

MINDRUP HOUSE-STORE  
 5543 WATER ST.  
 AUGUSTA, ST. CHARLES COUNTY  
 MO  
 15/684390/4271000

Historic Resources of Augusta Mps  
 ST. CHARLES COUNTY, MO

(LABADIE)  
 7861 III SE

16 MI. TO U.S. 46 & 61

4268  
 32' 30"

ST CHARLES CO  
 FRANKLIN CO

- 1) Robert EWICH FARMSTEAD
- 2) Augusta, St. Charles County, MO
- 3) MARY STIRITZ
- 4) Dec. 1993
- 5) MO Dept Natural Resources
- 6) East (primary) + south elev's.  
CAMERA facing NW
- 7) # 1



- 1) Robert EWICH Farmstead
- 2) Augusta, St. Charles County, MO
- 3) MARY STIRITZ
- 4) Dec. 1993
- 5) MO Dept Natural Resources
- 6) south elev. of house  
south east elevs of barn  
CAMERA facing N/NW
- 7) # 2



- 1) Robert EWICH FARMSTEAD
- 2) Augusta, St. Charles County, MO
- 3) MARY STIRITZ
- 4) Dec. 1993
- 5) MO Dept. Natural Resources
- 6) NORTH elev. of barn  
camera facing south
- 7) #3

7  
+

