

Johnson's Shut-Ins State Park

BY THE NUMBERS

LOCATION: Reynolds County

NUMBER OF ACRES: 9,432.27

NUMBER OF FULL-TIME STAFF: 8

NUMBER OF PART-TIME STAFF: 13

VOLUNTEER HOURS:* 4,530

STEWARDSHIP HOURS: 1255.65

2023 ATTENDANCE:* 197,076

MILES OF TRAIL: 36.7

NUMBER OF STRUCTURES: 57

MILES OF ROADWAYS: 4.84

NUMBER OF PROGRAMS PRESENTED:* 94

STATE SALES TAX PAID:* \$29,104.15

LOCAL SALES TAX PAID:* \$10,332.83

TOTAL SALES TAX: \$39,436.99

BUDGET

SMALL MAINTENANCE & REPAIR BUDGET: \$19,800

ANNUAL BUDGET: \$763,328.00

CAPITAL IMPROVEMENTS PROJECTS IN PROGRESS:* 2

CAMPING & LODGING

NUMBER OF CAMPING NIGHTS SOLD:* 11,896

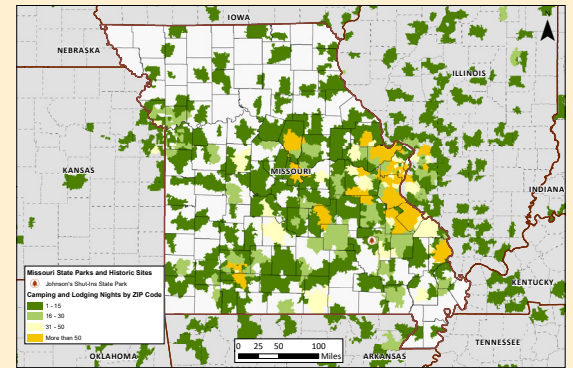
NUMBER OF LODGING NIGHTS SOLD:* 1,316

NUMBER OF CAMPSITES: 79

NUMBER OF LODGING UNITS: 6

NUMBER OF OVERNIGHT GUESTS:* 40,447

CAMPING NIGHTS SOLD BY ZIP CODE: >>>>>>



SPECIAL EVENTS

MISSOURI STATE PARK EVENTS: 3

THIRD PARTY EVENTS: 1

PHOTO ALBUM



* All numbers through December 2023. † Information includes park and concession-run operations. ** Estimated park and concession sales tax paid.