

# Hawn State Park

BY THE NUMBERS

**LOCATION:** Ste. Genevieve County  
**NUMBER OF ACRES:** 4,955.66  
**NUMBER OF FULL-TIME STAFF:** 3  
**NUMBER OF PART-TIME STAFF:** 2  
**VOLUNTEER HOURS:\*** 5,189  
**STEWARDSHIP HOURS:** 338  
**2023 ATTENDANCE:\*** 137,008

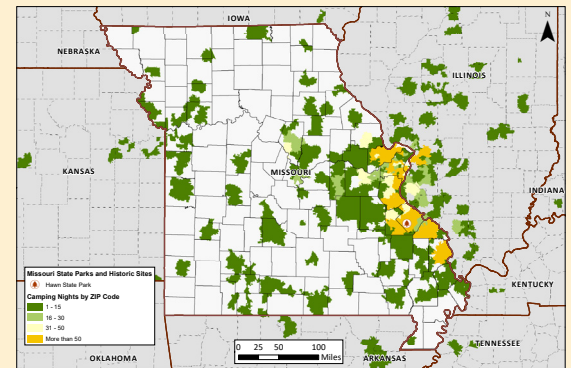
**MILES OF TRAIL:** 16  
**NUMBER OF STRUCTURES:** 14  
**MILES OF ROADWAYS:** 2.93  
**NUMBER OF PROGRAMS PRESENTED:\*** 8  
**STATE SALES TAX PAID:\*** \$6,281.84  
**LOCAL SALES TAX PAID:\*** \$5,018.04  
**TOTAL SALES TAX:** \$11,299.88

BUDGET

**SMALL MAINTENANCE & REPAIR BUDGET:** \$30,000.00  
**ANNUAL BUDGET:** \$233,238.00

CAMPING & LODGING

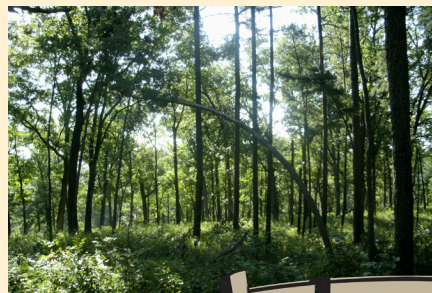
**NUMBER OF CAMPING NIGHTS SOLD:\*** 7,368  
**NUMBER OF CAMPSITES:** 61  
**NUMBER OF OVERNIGHT GUESTS:\*** 19,991  
**CAMPING NIGHTS SOLD BY ZIP CODE:** >>>>>>



SPECIAL EVENTS

**MISSOURI STATE PARK EVENTS:** 1  
**SCHOOL GROUPS:** 4

PHOTO ALBUM



\* All numbers through December 2023. † Information includes park and concession-run operations. \*\* Estimated park and concession sales tax paid.