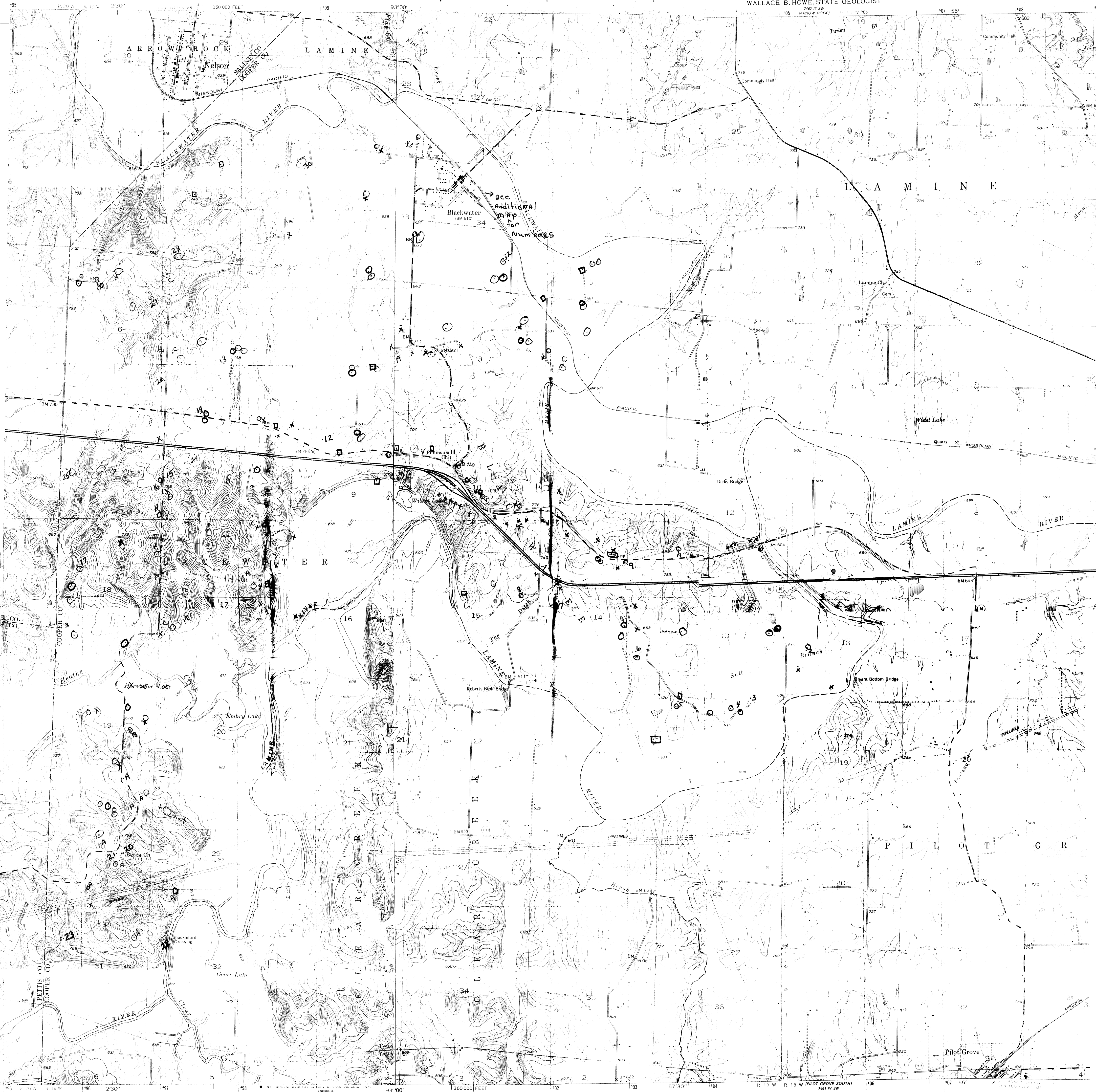


NELSON QUADRANGLE  
MISSOURI  
7.5 MINUTE SERIES (TOPOGRAPHIC)

STATE OF MISSOURI  
DEPARTMENT OF NATURAL RESOURCES  
WALLACE B. HOWE, STATE GEOLOGIST

PILOT



ROAD CLASSIFICATION

Primary highway, hard surface  
Secondary highway, hard surface  
Unimproved road  
Interstate Route  
U. S. Route  
State Route

Mapped, edited, and published by the Geological Survey  
Control by USGS, USC&GS, and USCE  
Topography from aerial photographs by Kelsh plotter  
Aerial photographs taken 1947. Field check 1953  
Polyconic projection. 1927 North American datum  
10,000-foot grid based on Missouri coordinate system,  
central zone  
1000-meter Universal Transverse Mercator grid ticks,  
zone 15, shown in blue  
Revisions shown in purple; compiled from aerial photographs taken  
1977. Map edited 1979. This information not field checked

UTM GRID AND 1979 MAGNETIC NORTH  
DECLINATION AT CENTER OF SHEET

SCALE 1:24,000

CONTOUR INTERVAL 10 FEET  
NATIONAL GEODETIC VERTICAL DATUM OF 1929

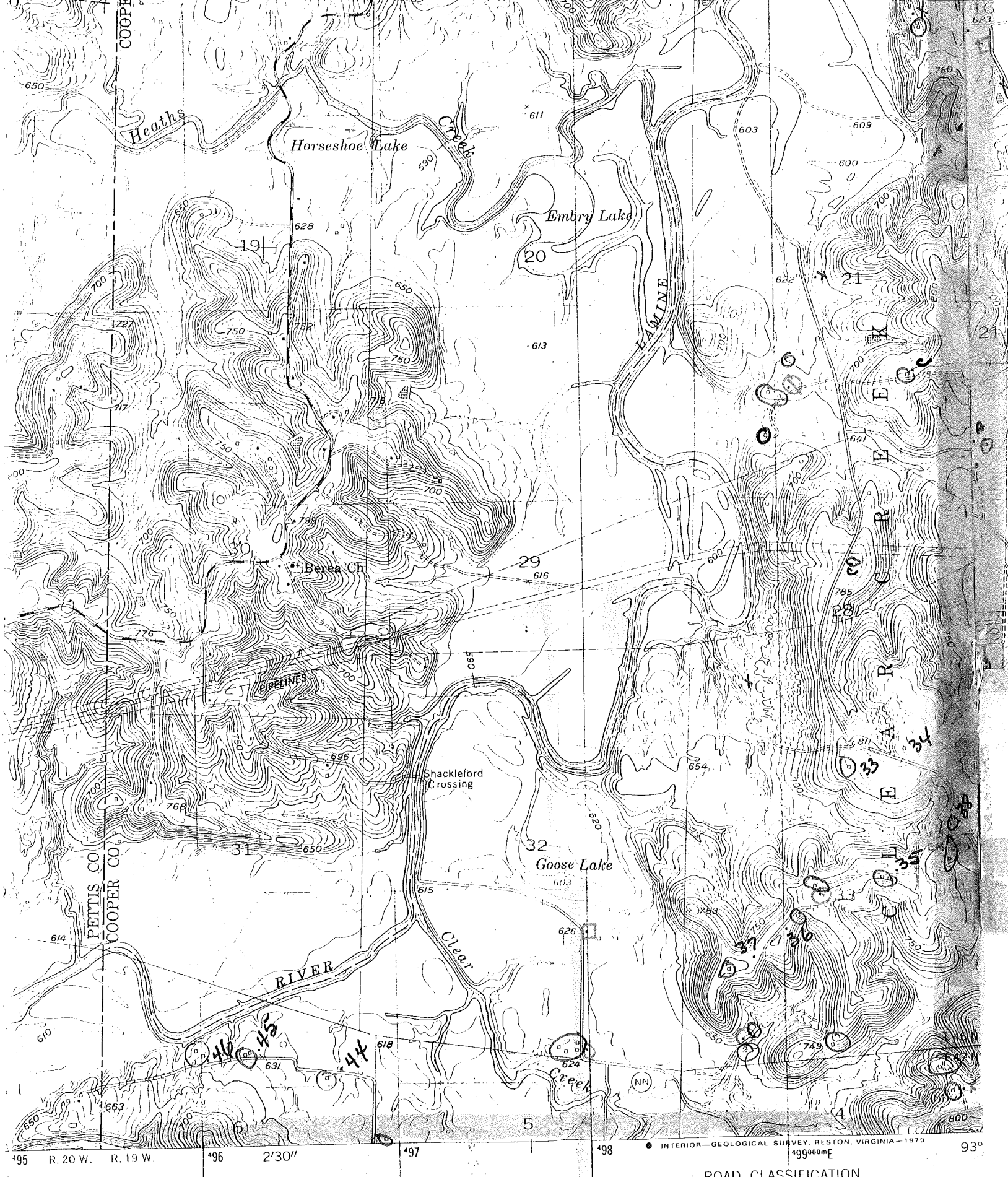
MISSOURI

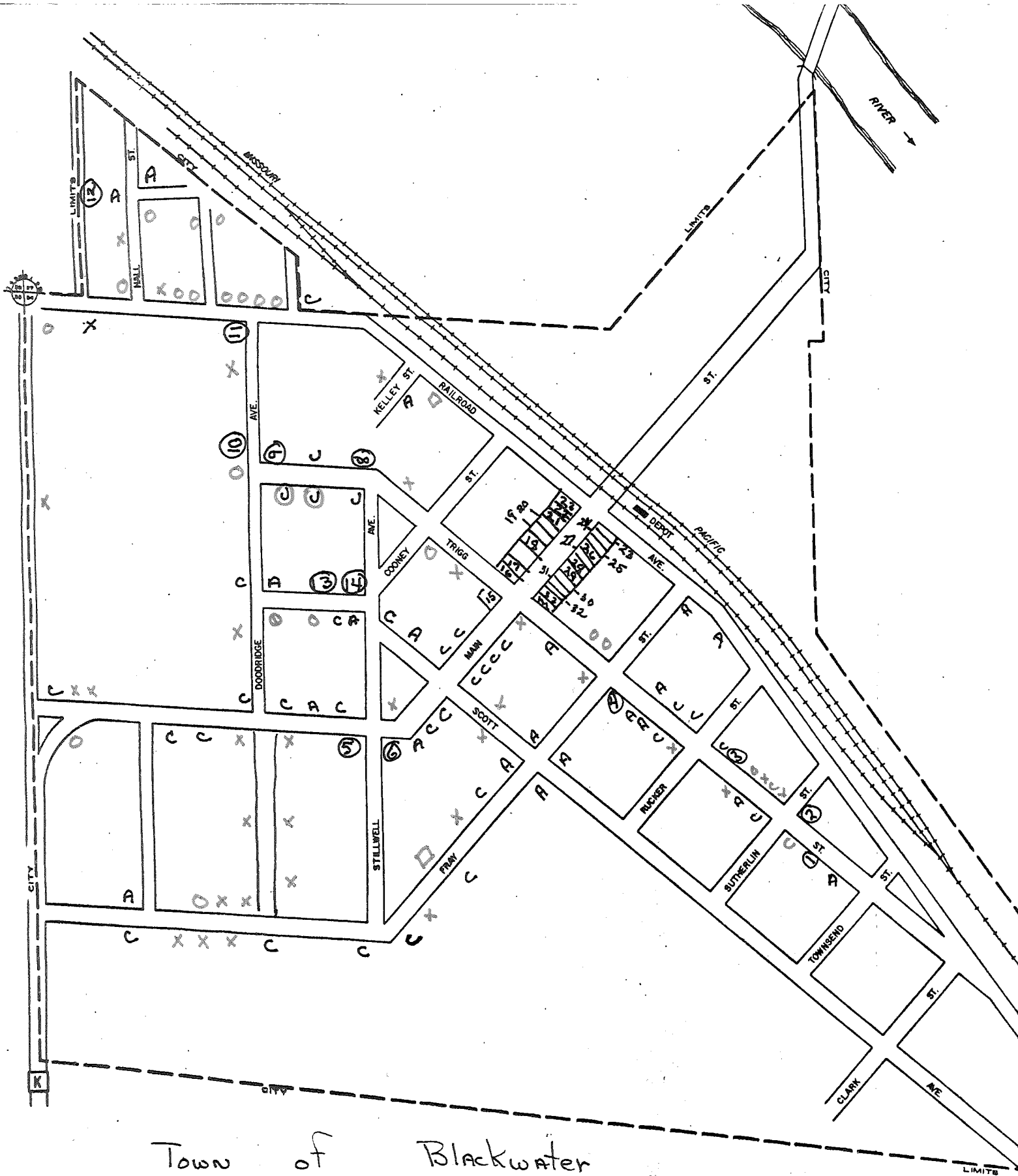
QUADRANGLE LOCATION

MISSOURI

MISSOURI





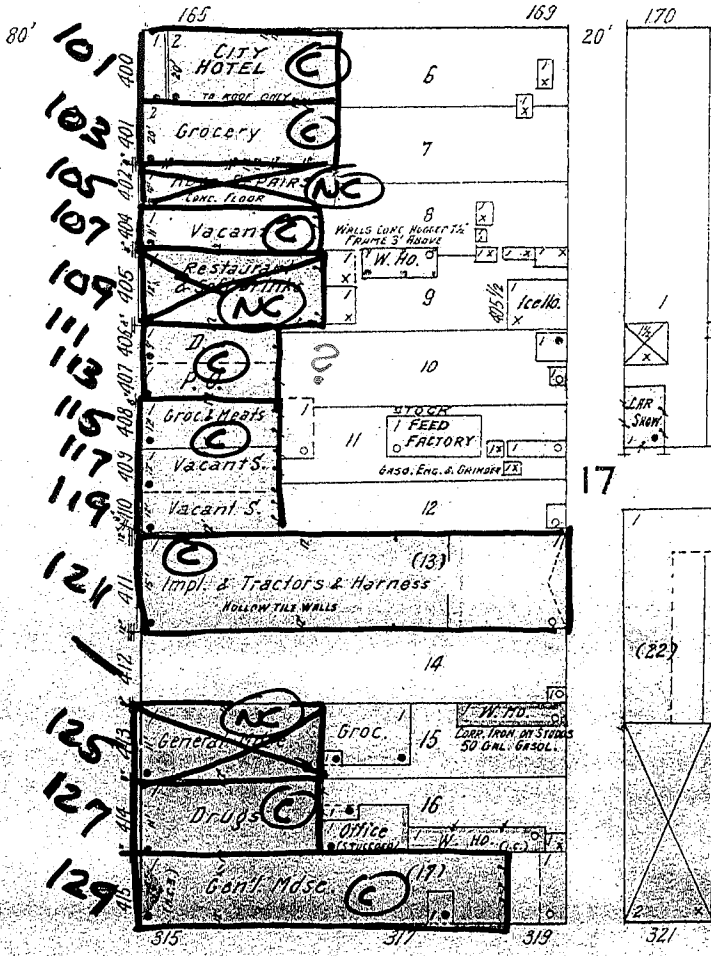


Town of Blackwater  
 Cooper County, Missouri  
 Blackwater Township

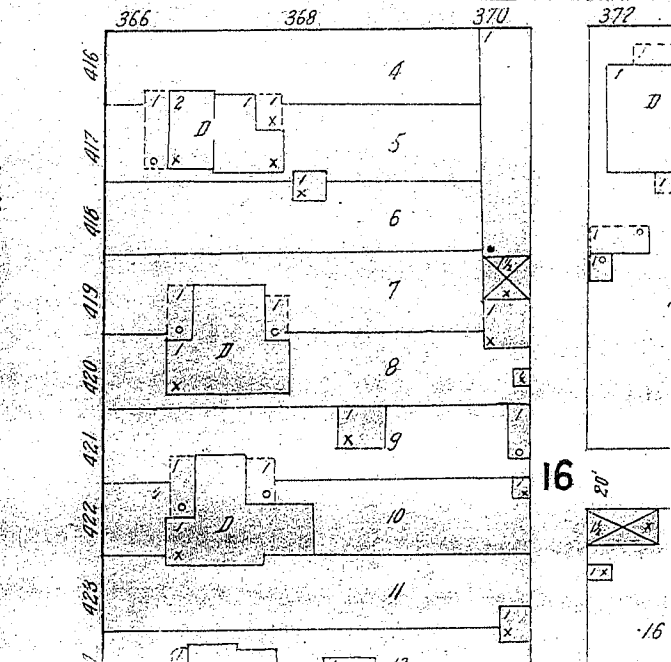
**BLACKWATER**  
 COOPER COUNTY  
 MISSOURI

SNP SET

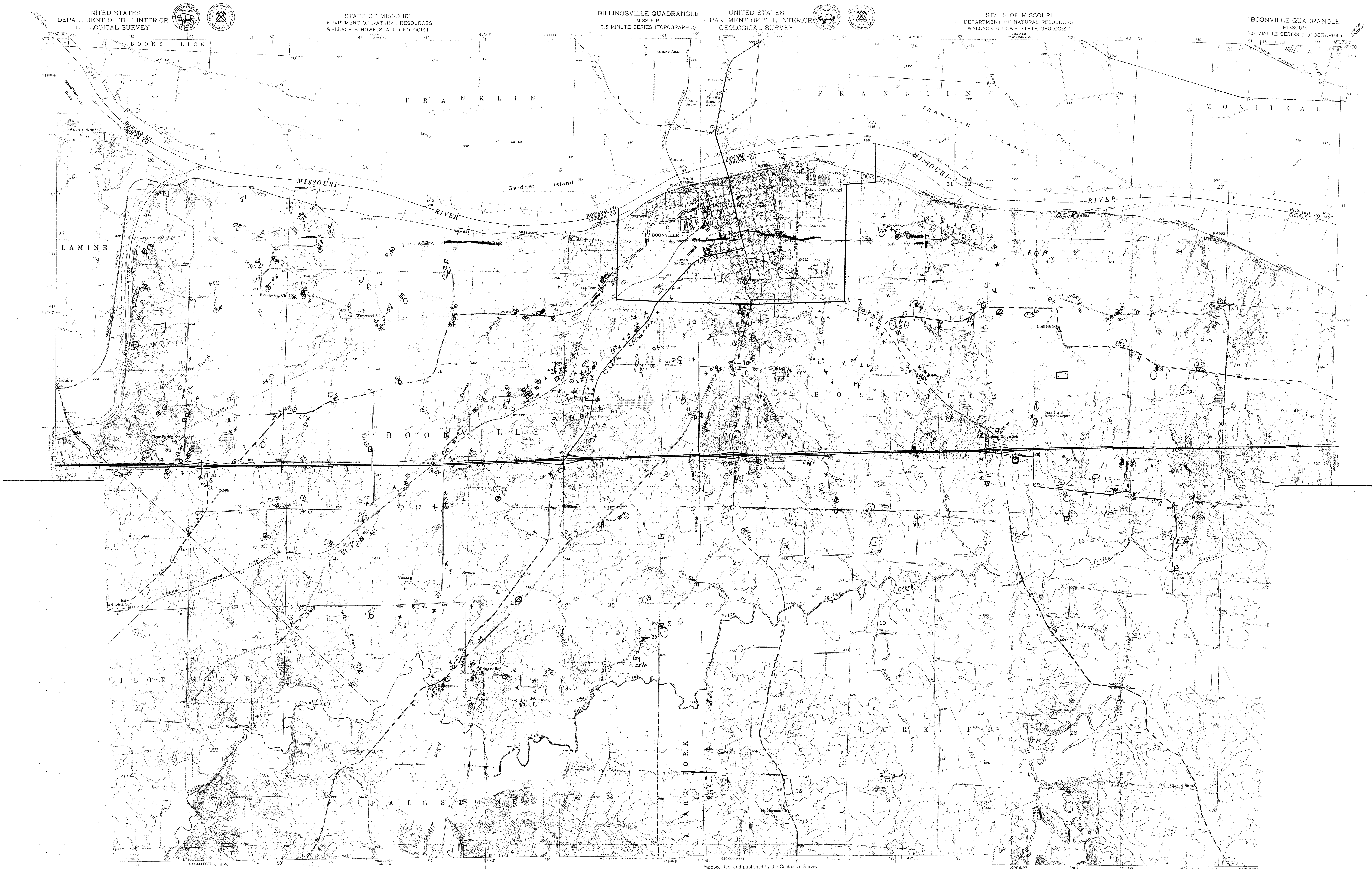
AV.



AV.







Published by the Geological Survey

Photographs by Kersh plotter

1953. Aerial photographs taken 1947

7 North American datum

Missouri coordinate system,

verse Mercator grid ticks,

contour from aerial photographs taken

UTM GRID AND 1976 MAGNETIC NORTH

DECLINATION AT CENTER OF SHEET

THIS MAP IS

CONFORMS WITH NATIONAL MAP ACCURACY

STANDARDS

0.000-MINUTER TRANSVERSE MERCATOR

QUADRANGLE LOCATION

SCALE 1:24,000

1 MILE

1 KILOMETER

VERTICAL INTERVAL 10 FEET

NATIONAL DATUM OF 1929

CONTOUR INTERVAL 10 FEET

GEODETIC VERTICAL DATUM OF 1929

ROAD CLASSIFICATION

Heavy-duty

Light-duty

Medium-duty

Unimproved dirt

U. S. Route

State Route

Interstate Route

Control T&GS, USC&GS, and USCE

Topography from aerial photographs by Kersh plotter

serial photographs taken 1947. Field check 1952

Polynomial, 1927 North American datum

10,000' grid based on Missouri coordinate system,

and 1927

Red indicates areas in which only

and/or markings are shown

0.000-MINUTER TRANSVERSE MERCATOR

GRID TICKS

UTM GRID AND 1976 MAGNETIC NORTH

DECLINATION AT CENTER OF SHEET

THIS MAP IS

Map edited, and published by the Geological Survey

Control T&GS, USC&GS, and USCE

Topography from aerial photographs by Kersh plotter

serial photographs taken 1947. Field check 1952

Polynomial, 1927 North American datum

10,000' grid based on Missouri coordinate system,

and 1927

Red indicates areas in which only

and/or markings are shown

0.000-MINUTER TRANSVERSE MERCATOR

GRID TICKS

UTM GRID AND 1976 MAGNETIC NORTH

DECLINATION AT CENTER OF SHEET

THIS MAP IS

Map edited, and published by the Geological Survey

Control T&GS, USC&GS, and USCE

Topography from aerial photographs by Kersh plotter

serial photographs taken 1947. Field check 1952

Polynomial, 1927 North American datum

10,000' grid based on Missouri coordinate system,

and 1927

Red indicates areas in which only

and/or markings are shown

0.000-MINUTER TRANSVERSE MERCATOR

GRID TICKS

UTM GRID AND 1976 MAGNETIC NORTH

DECLINATION AT CENTER OF SHEET

THIS MAP IS

Map edited, and published by the Geological Survey

Control T&GS, USC&GS, and USCE

Topography from aerial photographs by Kersh plotter

serial photographs taken 1947. Field check 1952

Polynomial, 1927 North American datum

10,000' grid based on Missouri coordinate system,

and 1927

Red indicates areas in which only

and/or markings are shown

0.000-MINUTER TRANSVERSE MERCATOR

GRID TICKS

UTM GRID AND 1976 MAGNETIC NORTH

DECLINATION AT CENTER OF SHEET

THIS MAP IS

Map edited, and published by the Geological Survey

Control T&GS, USC&GS, and USCE

Topography from aerial photographs by Kersh plotter

serial photographs taken 1947. Field check 1952

Polynomial, 1927 North American datum

10,000' grid based on Missouri coordinate system,

and 1927

Red indicates areas in which only

and/or markings are shown

0.000-MINUTER TRANSVERSE MERCATOR

GRID TICKS

UTM GRID AND 1976 MAGNETIC NORTH

DECLINATION AT CENTER OF SHEET

THIS MAP IS

Map edited, and published by the Geological Survey

Control T&GS, USC&GS, and USCE

Topography from aerial photographs by Kersh plotter

serial photographs taken 1947. Field check 1952

Polynomial, 1927 North American datum

10,000' grid based on Missouri coordinate system,

and 1927

Red indicates areas in which only

and/or markings are shown

0.000-MINUTER TRANSVERSE MERCATOR

GRID TICKS

UTM GRID AND 1976 MAGNETIC NORTH

DECLINATION AT CENTER OF SHEET

THIS MAP IS

Map edited, and published by the Geological Survey

Control T&GS, USC&GS, and USCE

Topography from aerial photographs by Kersh plotter

serial photographs taken 1947. Field check 1952

Polynomial, 1927 North American datum

10,000' grid based on Missouri coordinate system,

and 1927

Red indicates areas in which only

and/or markings are shown

0.000-MINUTER TRANSVERSE MERCATOR

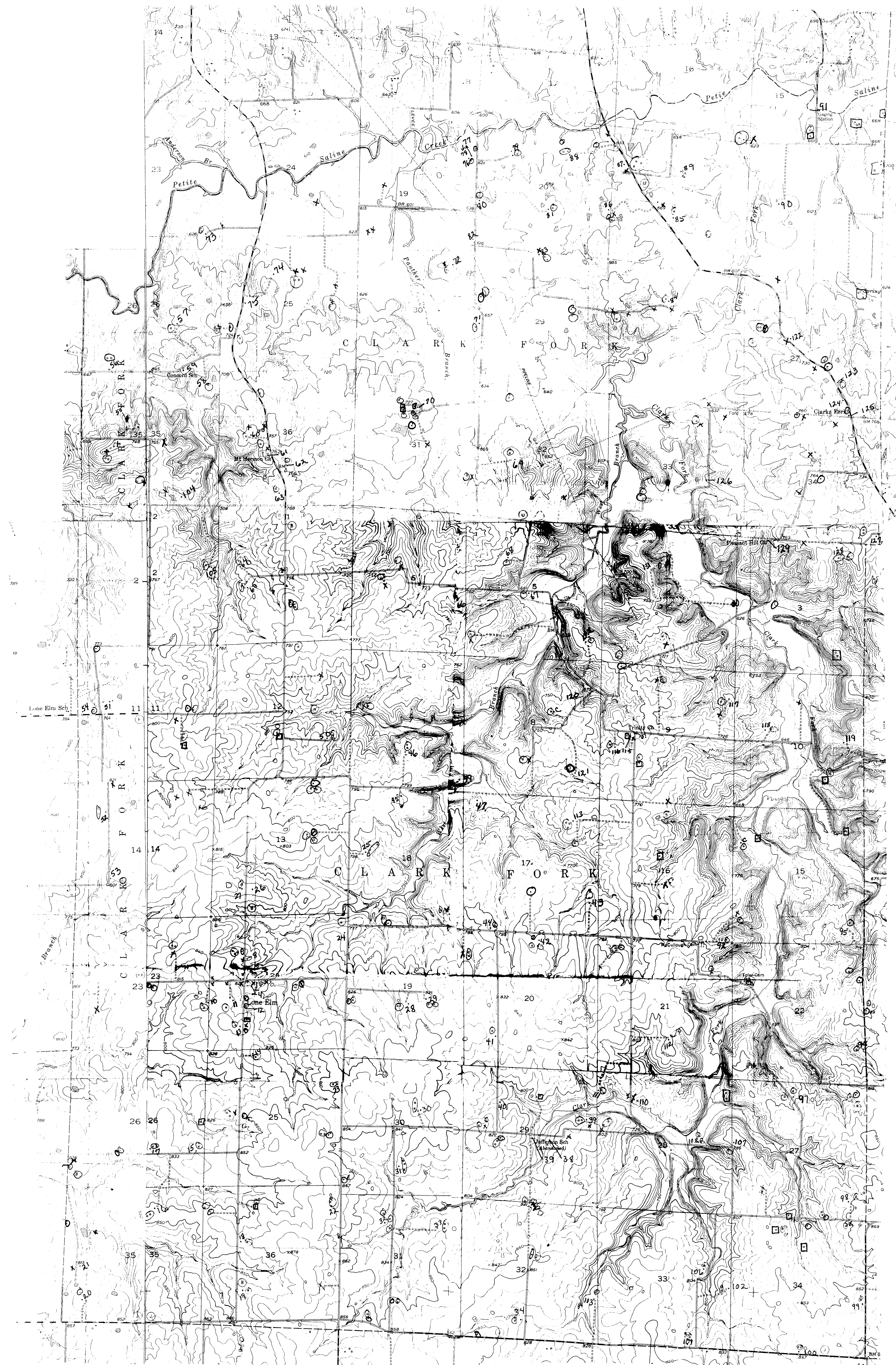
GRID TICKS

UTM GRID AND 1976 MAGNETIC NORTH

DECLINATION AT CENTER OF SHEET

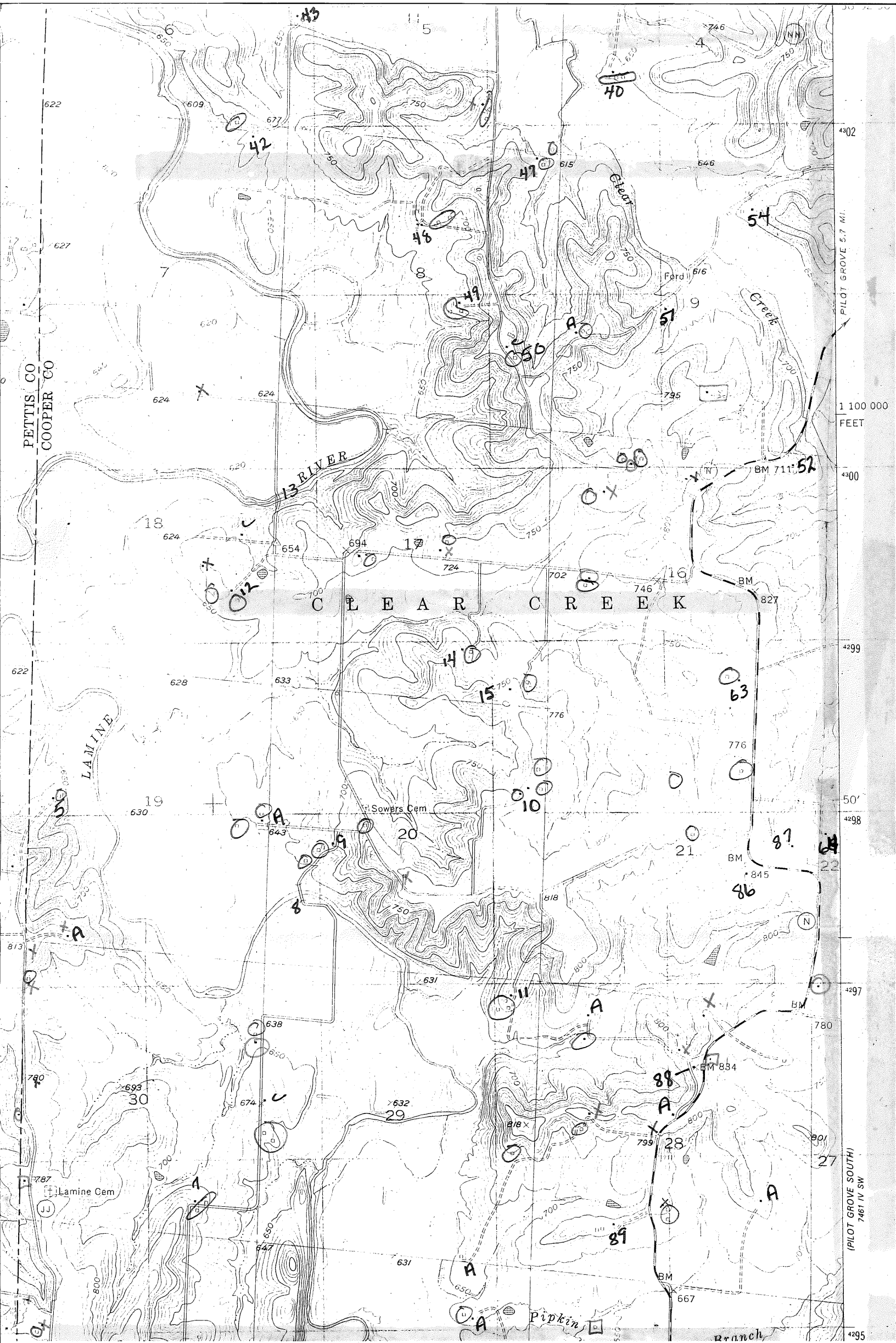
THIS MAP IS







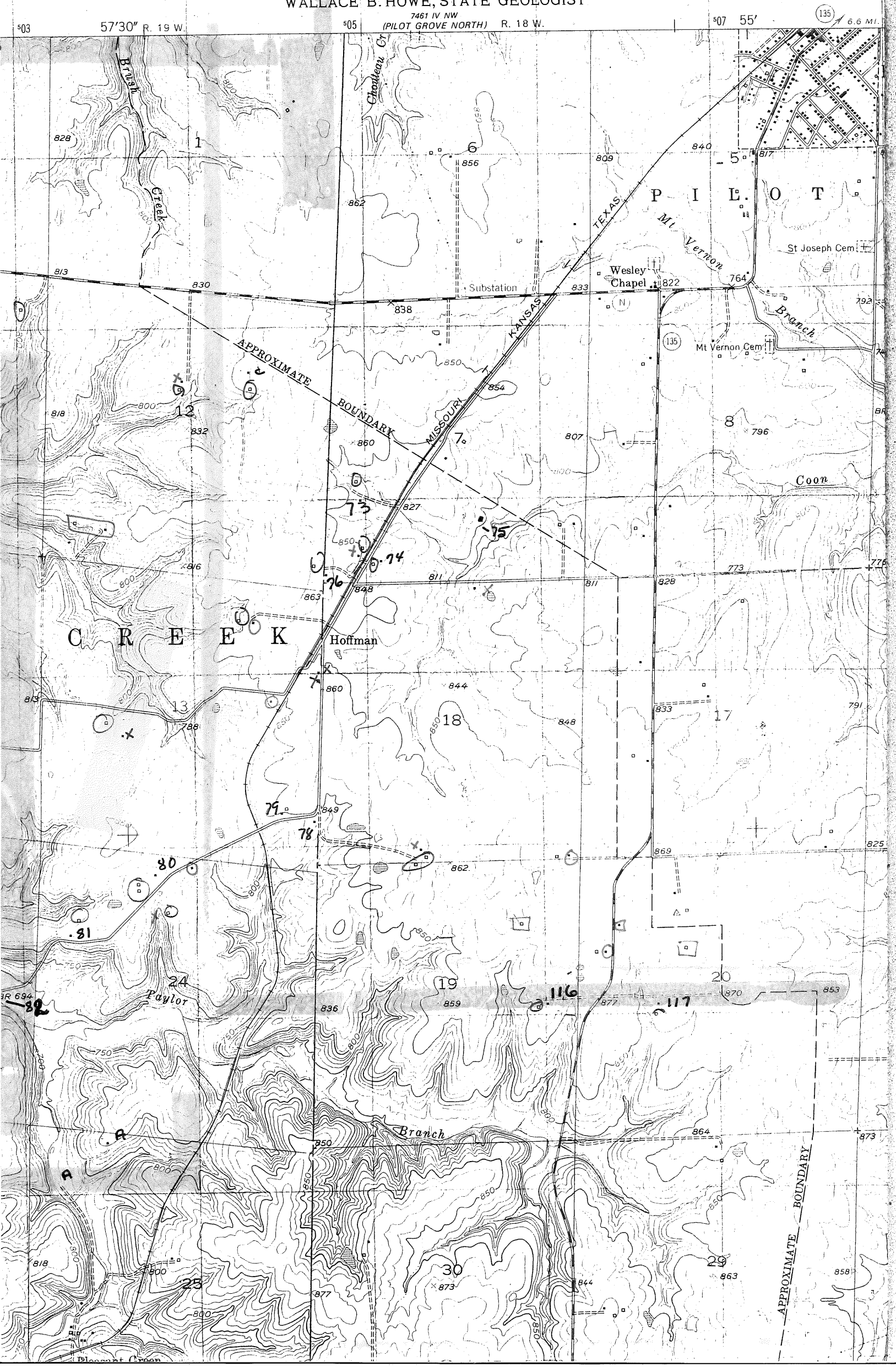






STATE OF MISSOURI  
DEPARTMENT OF NATURAL RESOURCES  
WALLACE B. HOWE, STATE GEOLOGIST

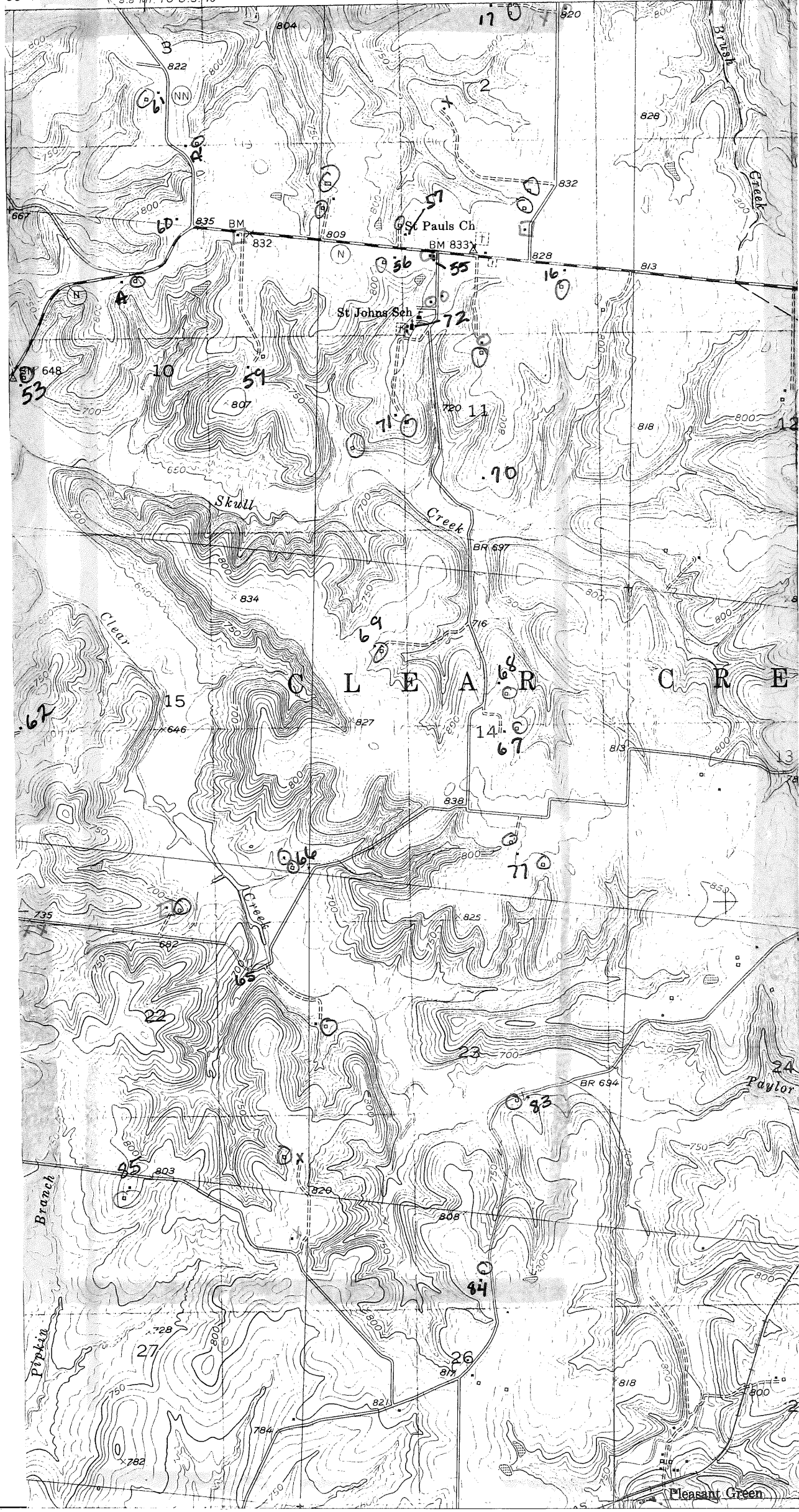
7461 IV NW  
(PILOT GROVE NORTH) R. 18 W



UNITED STATES  
DEPARTMENT OF THE INTERIOR  
GEOLOGICAL SURVEY

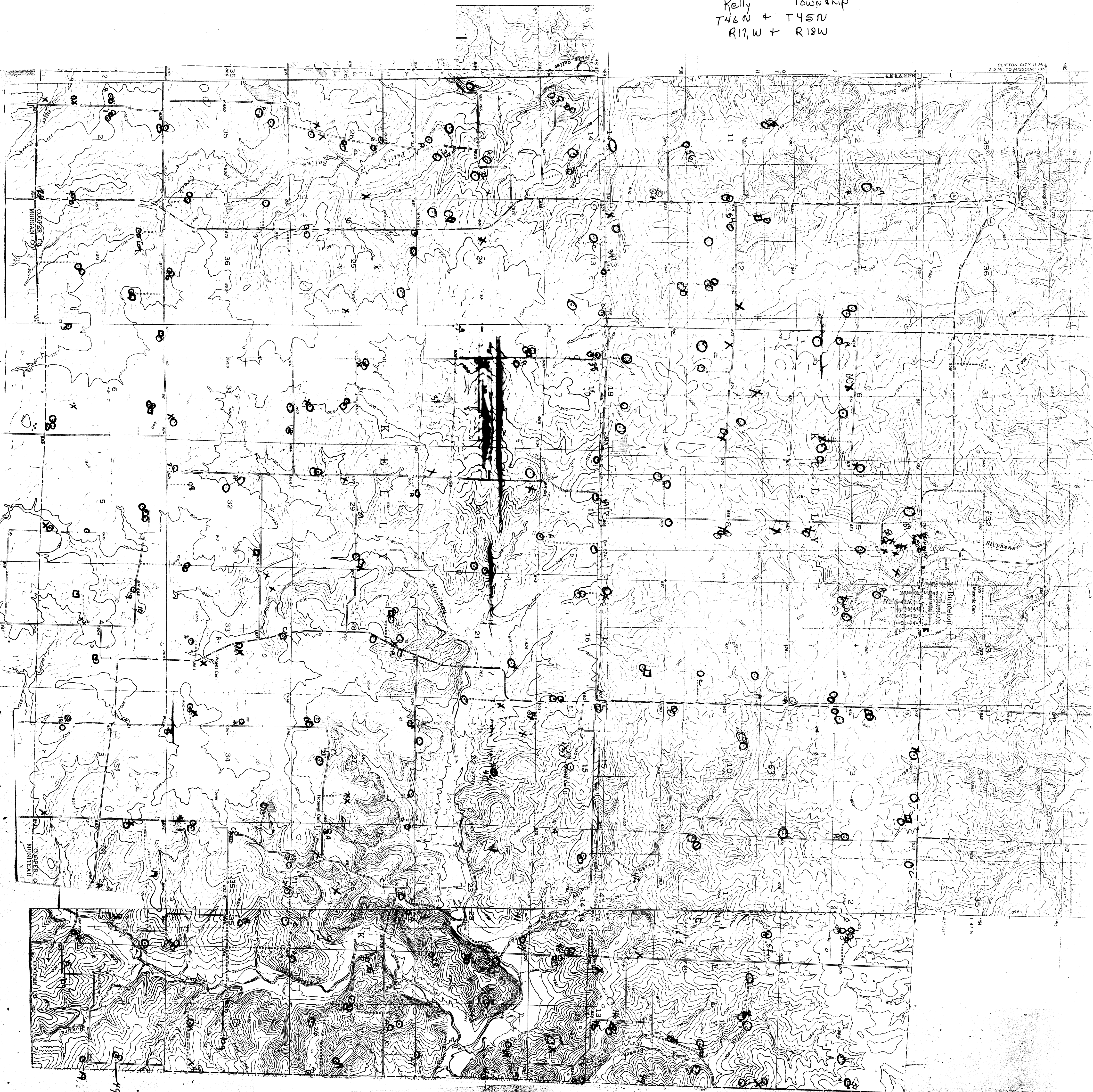


00' 5.8 MI. TO U.S. 40 502000mE 503 57'30" R. 19 W.





Kelly Township  
T46N + T45N  
R17W + R18W



Kelly Township, Cooper County, Missouri

March + April, 1881

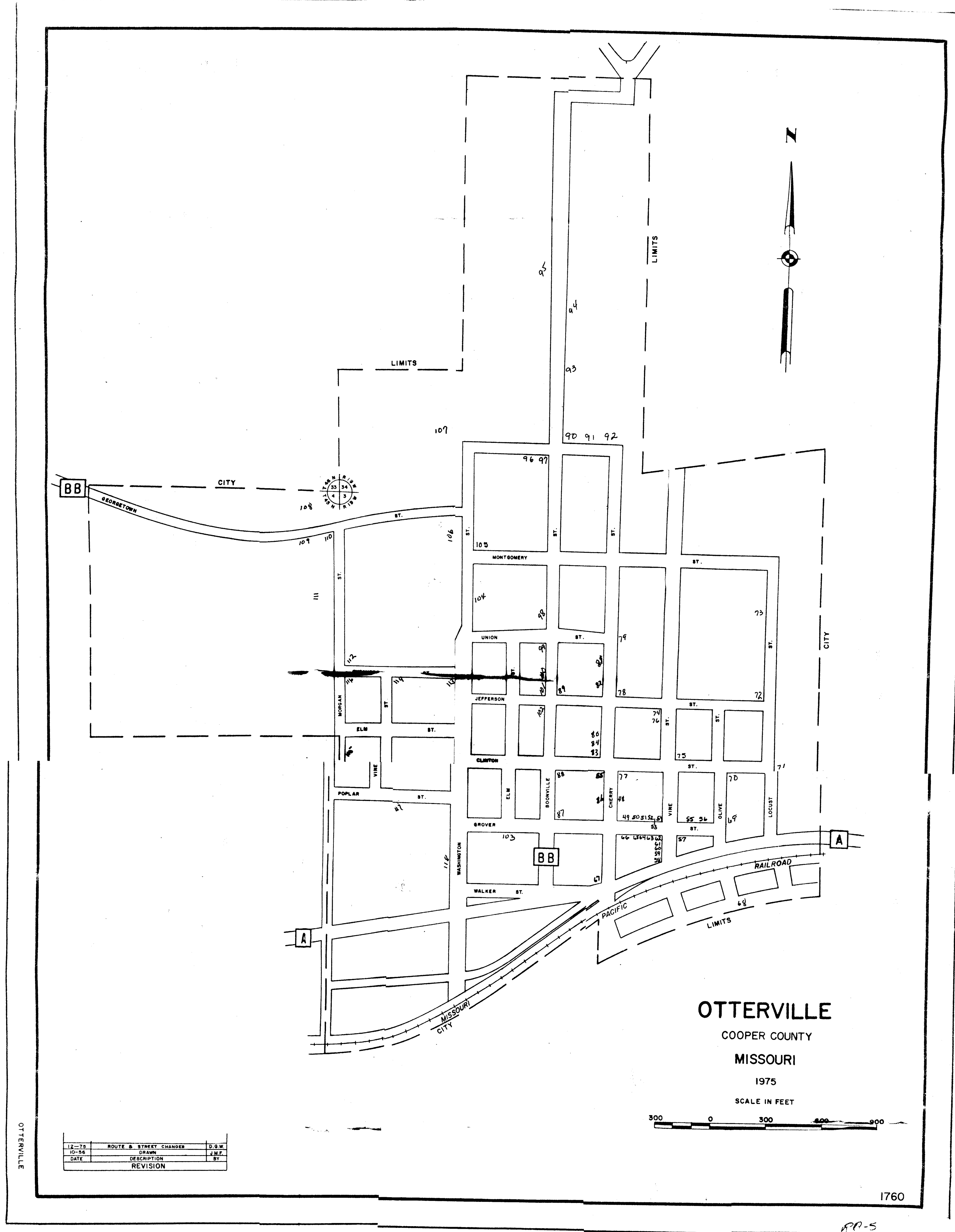


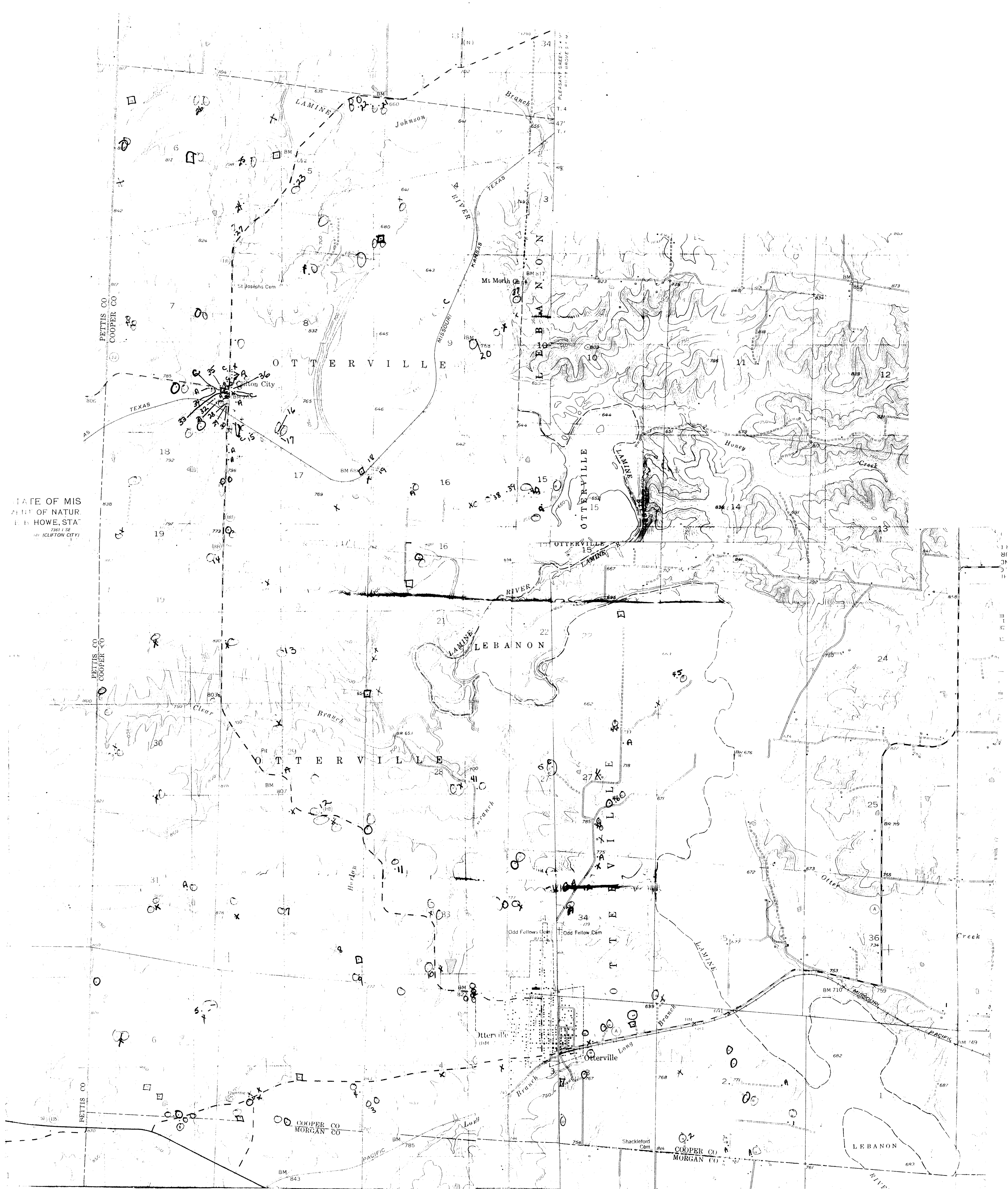




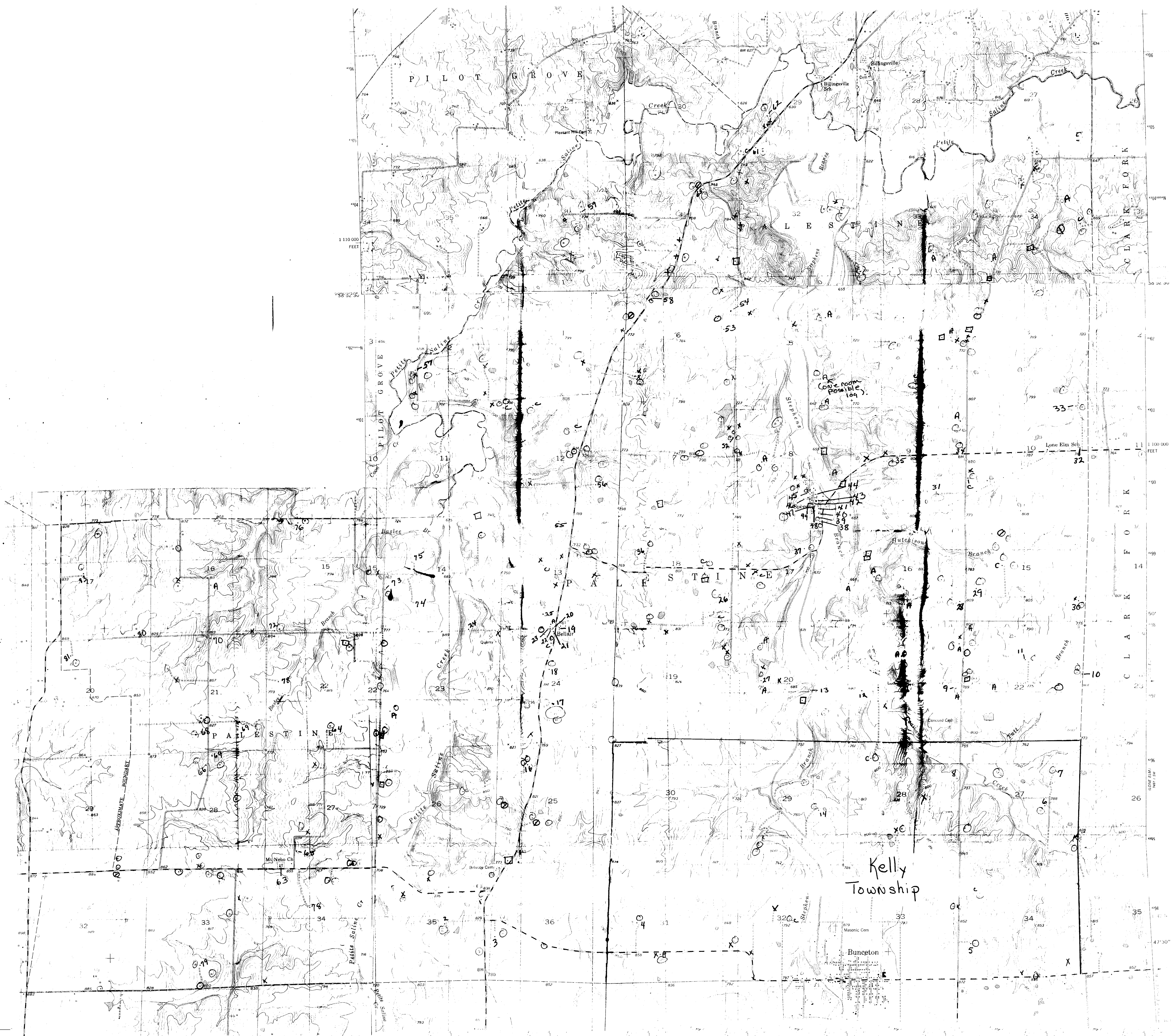










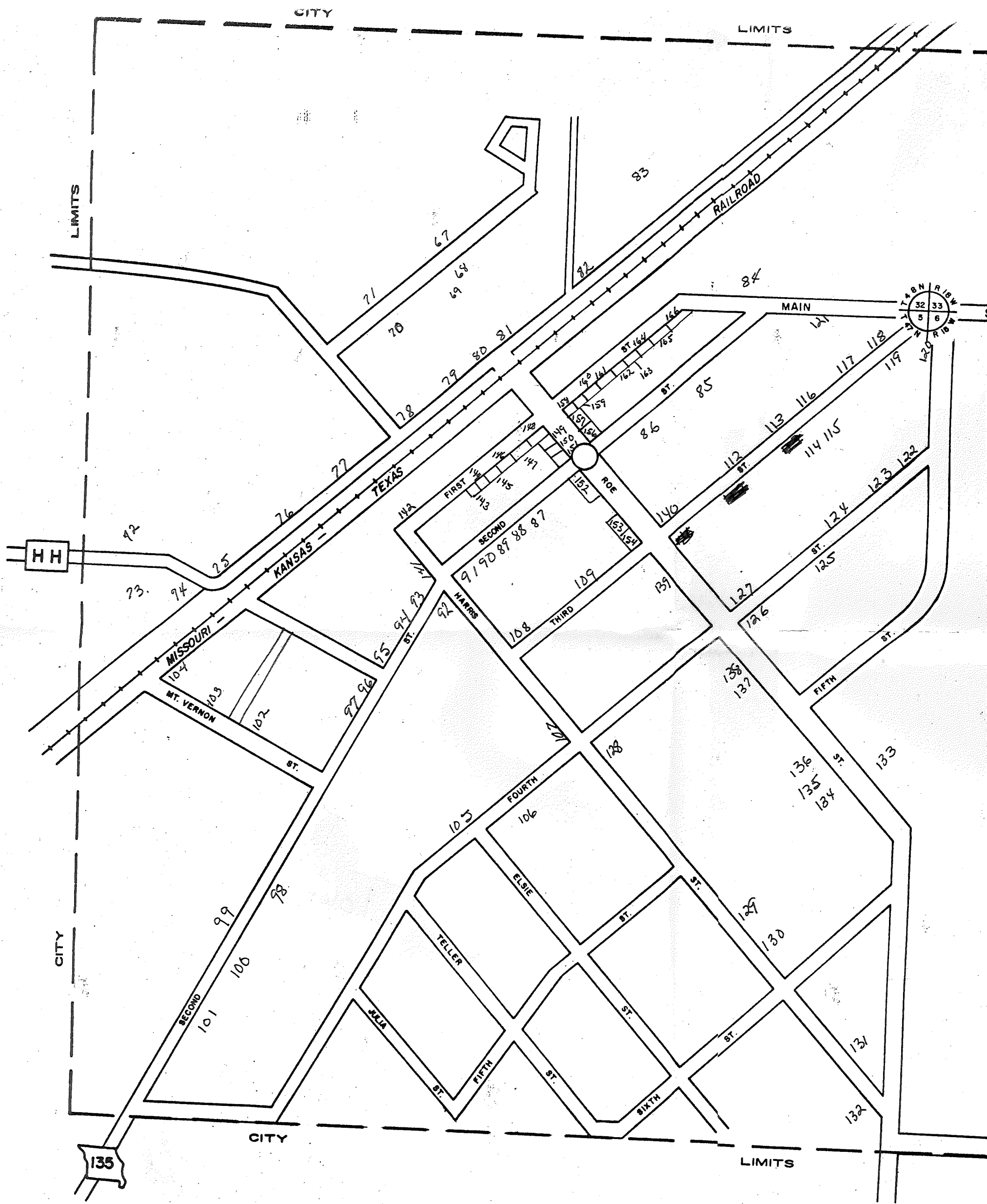




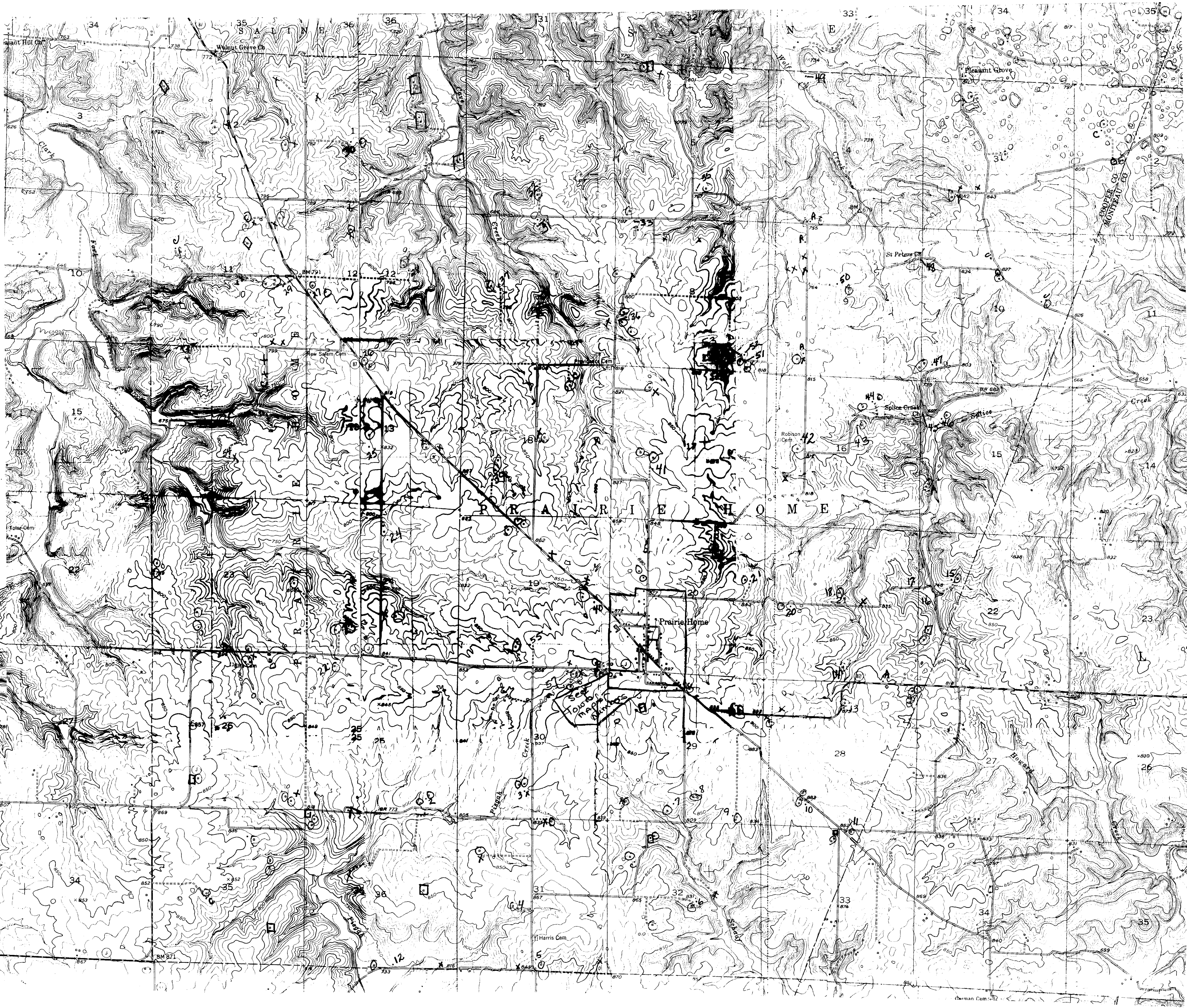














Prairie Home

