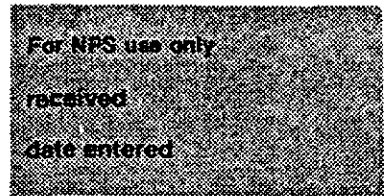


**United States Department of the Interior
National Park Service**

**National Register of Historic Places
Inventory—Nomination Form**



HISTORIC RESOURCES OF THE

Continuation sheet CITY OF CARTHAGE

Item number 7, Amendment

Page 1

District #2, Cassill Place Historic District (See revised Plan 3A), shall be amended, as follows:

The district is enclosed by a quadrilateral whose vertices are the following UTM coordinates:

15/382700/4115260
15/382700/4115400
15/382880/4115400
15/382880/4115260

The boundaries of the district may be further described, as follows: The district is enclosed by a line which begins at the north curb of the east-west alley between Central and Olive at the intersection of said alley and Blanche. It thence continues east along the north curb of said alley for approximately 410 feet. It thence continues north approximately 425 feet to the north curb of the east-west alley between Central and Mound. It thence continues west along the north curb of said alley for approximately 410 feet to the east curb of Blanche. It thence continues south along the east curb of Blanche approximately 425 feet to the beginning point.

Within these boundaries, Cassill Place Historic District retains integrity as a surviving segment of the former Cassill Place, a residential haven for wealthy citizens of Carthage in the period between 1890 and 1925. Originally two blocks long, the once-stylish district has shrunk to one block, surrounded by commercial development along Central Avenue. However, this one block contains eight houses that retain a high degree of integrity and demonstrate important stylistic trends of the period between 1890 and 1925 and only one house (#541) that has been substantially denatured and therefore does not contribute to the significance of the district.

Properties contained within the amended district boundaries are as follows:

536. Macoubrie House, 721 Central, 1903. The curving veranda of this Victorian Eclectic home was added between 1909 and 1925. The modified hipped roof has a denticulated cornice, as does the porch, which is supported by Doric columns. The hipped dormers are sided with fishscale shingles.
537. Former Herrin Home, 728 Central, c.1890. Major Joseph Herrin hired G. Bistline, a local contractor, to begin construction on this 2 1/2 story home. Cast iron roof cresting and finials crown the hipped roof and porch. Decorative sunburst panels and shingles enhance the upper gable and the cornice is bracketed.

United States Department of the Interior
National Park Service

National Register of Historic Places
Inventory—Nomination Form

For NPS use only
received
date entered

HISTORIC RESOURCES OF THE

Continuation sheet CITY OF CARTHAGE

Item number 7, Amendment

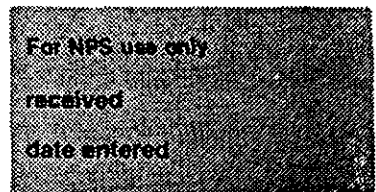
Page 2

538. Fenimore House, 729 Central, c. 1890. G. Bistline was again the local contractor in charge of the construction of this 2 1/2 story Eastlake home. A fine veranda with turned posts and jig-sawn cut brackets wraps around the front of the residence. The interior and the exterior have received very few alterations over the years.
539. McFadden House, 733 Central, c. 1925. This 1 1/2 story, frame Bungalow has large, diagonal braces beneath the front gable and exposed rafters under the side eaves. The porch roof is supported by square wooden posts set on stone foundations.
540. Meister House, 734 Central, c. 1890. The modified hipped roof of this two story Victorian Eclectic home is crowned by cast iron roof cresting. The porch features the same type of cresting, turned posts, balusters and scrolled brackets.
541. Joe McFadden House, 735 West Central, c. 1910. This home was moved from several lots east of (537) to its present location in the 1950s. This two story Box home displays little architectural detail of significance.
542. A. H. McFadden House, 742 Central, 1914. This two story Box home retains its original door with oval light. The front porch has Doric support columns.
543. Former Eugene O'Keefe House, 743 Central, c. 1893. This monumental, 2 1/2 story Queen Anne home was expertly restored in 1977-1978. Previous years of neglect had left it in a dilapidated condition. A 2 1/2 story rounded tower, decorative chimneys, fishscale shingles, turned posts, cut work, and ornamental panels are only a few of the home's descriptive features.
544. Dennison House, 744 Central, c. 1914. This 1 1/2 story Bungalow has a Carthage marble veneer. The marble has been given a smooth finish.

Excluded from the nominated area is the Former Cassill Place (#545 on the original nomination form), which had been substantially altered and moved from its original site in order to make room for the construction of the Hawthorne School, located on the west side of Blanche Street.

United States Department of the Interior
National Park Service

National Register of Historic Places Inventory—Nomination Form



CASSILL PLACE HISTORIC DISTRICT

Continuation sheet

Item number

8 , Amendment

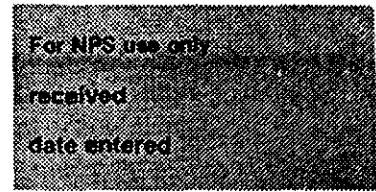
Page

1

Cassill Place Historic District is eligible for listing on the National Register of Historic Places according to the criteria under Definition C, to wit: the homes on this residential block retain the character of the period between 1890 and 1925, exhibit high artistic values, and illustrate important trends in architecture that occurred between the last decade of the nineteenth century and the middle 1920's. The district is significant in the area of architecture for the following reasons: Cassill Place was an important turn-of-the-century neighborhood that was pictured in a Souvenir Album of Carthage, Missouri, a Chamber of Commerce publication of that era as one of the most desirable residential areas in the city. The fine homes in Cassill Place are expressive reminders of an age of prosperity during which Carthage was promoted as "the ideal spot of the universe" by a Chamber of Commerce pamphlet.¹ Cassill Place retains several late Victorian homes of exceptional merit. Perhaps the most notable of these is the Queen Anne style home (#543) built by Eugene O'Keefe, who came to Carthage in the 1870's and engaged in business, eventually becoming director of the First National Bank. The Fenimore House (#538) is a fine example of the Eastlake style, with a sweeping veranda featuring turned posts and jig-sawn brackets. The McFadden House (#542) illustrates the movement toward simplicity and classicism after the turn of the century, and the Dennison House (#544) exemplifies the twentieth-century bungalow style, with an interesting use of a Carthage marble veneer. As a group these houses form a cohesive residential unit and convey a definite sense of the period between 1890 and the 1920's.

¹"The Beautiful Little City of Carthage, Jasper County, Missouri," published by Carthage Chamber of Commerce, 1925, unpaginated.

United States Department of the Interior
National Park Service



National Register of Historic Places Inventory—Nomination Form

CASSILL PLACE HISTORIC DISTRICT

Continuation sheet

Item number

9, Amendment Page

1

"The Beautiful City of Carthage, Jasper County, Missouri," published by the Carthage Chamber of Commerce, 1925.

Carthage, Missouri, "The Open Gate to the Ozarks," published by the Carthage Chamber of Commerce, 1926.

Souvenir Album of Carthage, Missouri, n.d.

SITE PLAN MAP
CASSILL PLACE HISTORIC DISTRICT
HISTORIC RESOURCES OF CARTHAGE, MISSOURI (PARTIAL INVENTORY)

PLAN 3A



NOT TO SCALE

↑
TO MOUND STREET

HISTORIC DISTRICT BOUNDARY

ALLEY

BLANCHE ST.

WEST CENTRAL (CASSILL PLACE)

543

541

539

538

536

544

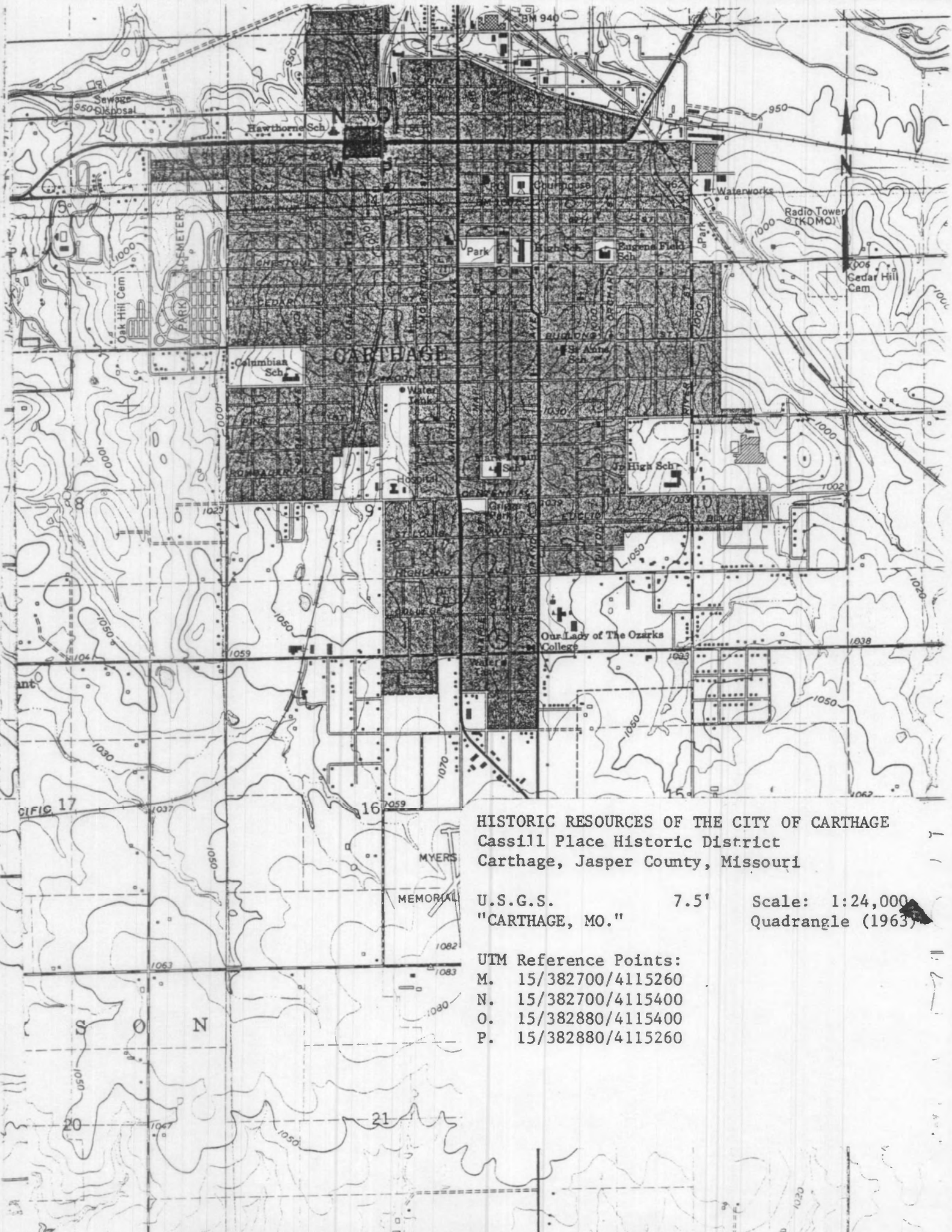
542

540

537

ALLEY

↓
TO OLIVE STREET



HISTORIC RESOURCES OF THE CITY OF CARTHAGE
 Cassill Place Historic District
 Carthage, Jasper County, Missouri

U.S.G.S. 7.5' Scale: 1:24,000
 "CARTHAGE, MO." Quadrangle (1963)

- UTM Reference Points:
 M. 15/382700/4115260
 N. 15/382700/4115400
 O. 15/382880/4115400
 P. 15/382880/4115260

HISTORIC RESOURCES OF THE CITY OF CARTHAGE
Cassill Place Historic District #1 of 4
Carthage, Jasper County, Missouri

Photographer: Bonnie Wright
Date: February 14, 1985
Neg. Loc.: Dept. of Natural Resources
Historic Preservation Program
P. O. Box 176
Jefferson City, Missouri 65102

View looking northeast from Blanche Street.
Houses shown, from left to right are #543,
#541, #539, #538, and #536.



HISTORIC RESOURCES OF THE CITY OF CARTHAGE
Cassill Place Historic District #2 of 4
Carthage, Jasper County, Missouri

Photographer: Bonnie Wright
Date: February 14, 1985
Neg. Loc.: Dept. of Natural Resources
Historic Preservation Program
P. O. Box 176
Jefferson City, Missouri 65102

View looking east from southeast corner of
Blanche and Central. Houses shown from
left to right are #'s 537, 540, 542, 544.



HISTORIC RESOURCES OF THE CITY OF CARTHAGE
Cassill Place Historic District #3 of 4
Carthage, Jasper County, Missouri

Photographer: Bonnie Wright
Date: February 14, 1985
Neg. Loc.: Dept. of Natural Resources
Historic Preservation Program
P. O. Box 176
Jefferson City, Missouri 65102

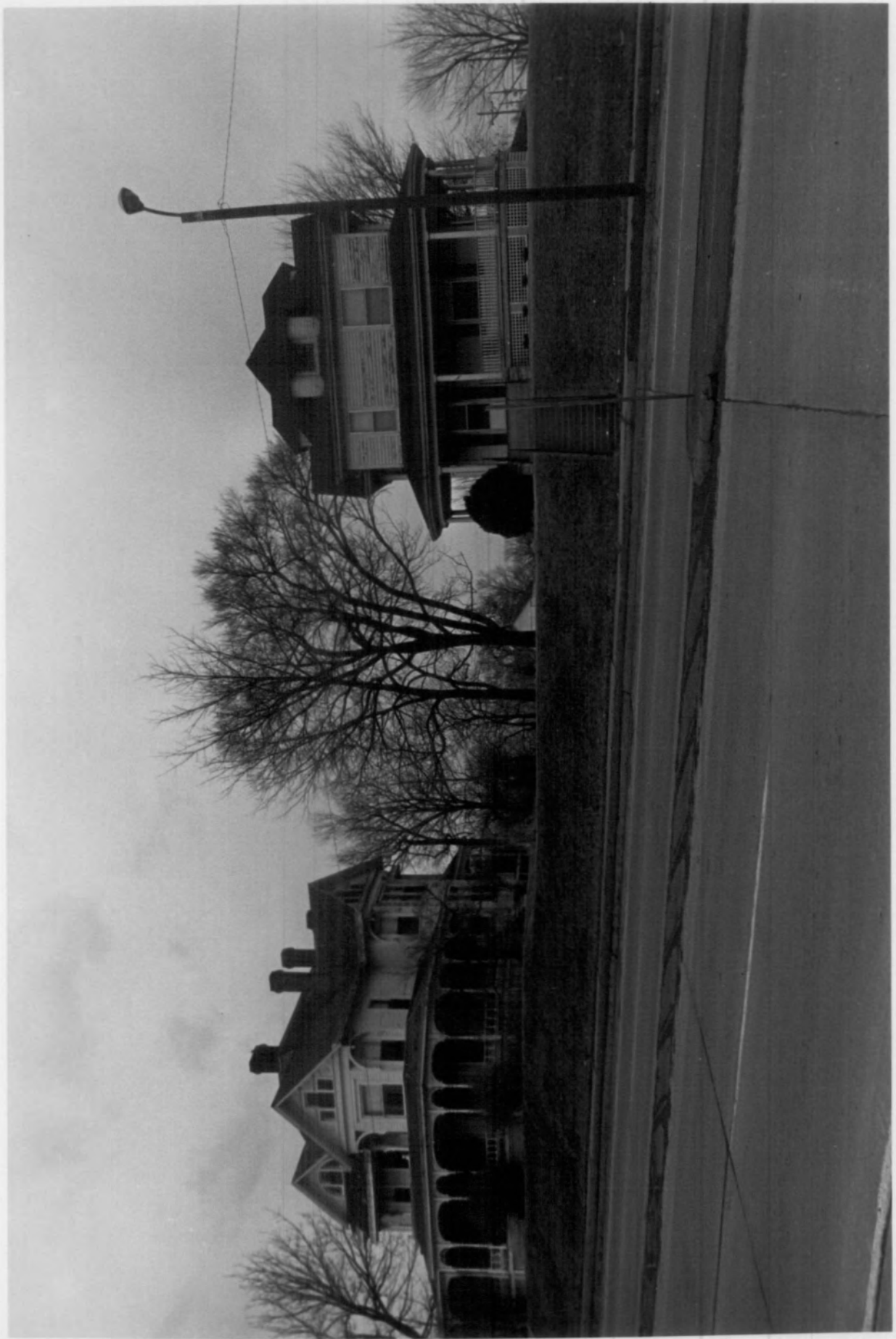
View looking west from south side of Central
Avenue. Houses shown from left to right are
#'s. 537, 540, 542, 544.



HISTORIC RESOURCES OF THE CITY OF CARTHAGE
Cassill Place Historic District #4 of 4
Carthage, Jasper County, Missouri

Photographer: Bonnie Wright
Date: February 14, 1985
Neg. Loc.: Dept. of Natural Resources
Historic Preservation Program
P. O. Box 176
Jefferson City, Missouri 65102

View looking north toward Macoubrie House
(#536), right, and Fenimore House (#538),
left.

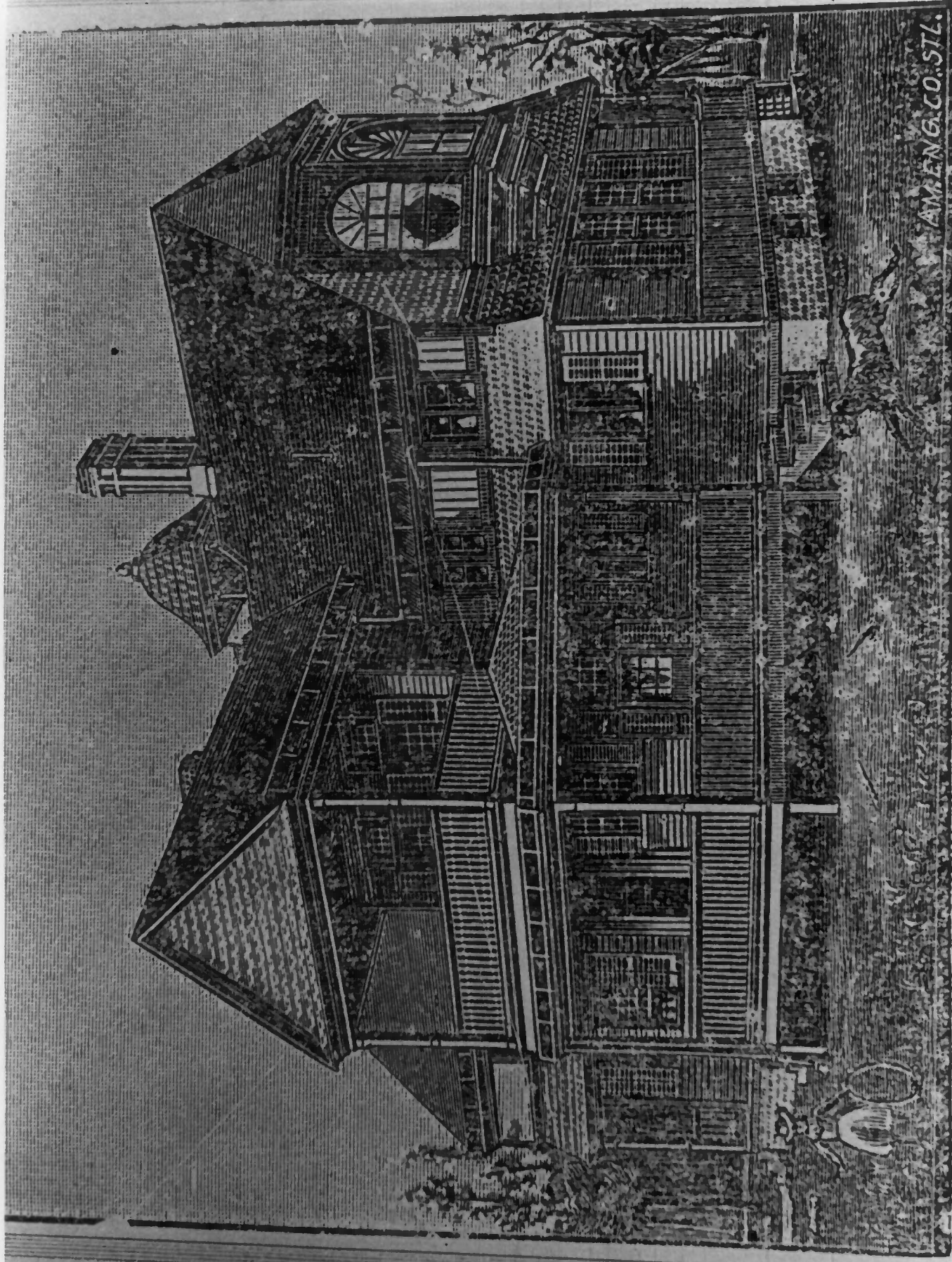


EXTRA
PHOTOS





CASSILL PLACE—A TYPICAL RESIDENCE STREET



HOME OF R. A. MONTGOMERY, 704 CASSIL PLACE.





