

United States Department of the Interior
National Park Service

National Register of Historic Places
Registration Form

1. Name of Property

historic name Brandon-Bell-Collier House

other names/site number n/a

2. Location

street & number 207 East Ninth Street [n/a] not for publication

city or town Fulton [n/a] vicinity

state Missouri code MO county Callaway code 027 zip code 65251

3. State/Federal Agency Certification

As the designated authority under the National Historic Preservation Act, as amended, I hereby certify that this nomination request for determination of eligibility meets the documentation standards for registering properties in the National Register of Historic Places and meets the procedural and professional requirements set forth in 36 CFR Part 60. In my opinion, the property meets does not meet the National Register criteria. I recommend that this property be considered significant nationally statewide locally.
(See continuation sheet for additional comments [].)

Claire F. Blackwell
Signature of certifying official/Title Claire F. Blackwell/Deputy SHPO

20 Nov. 1958
Date

Missouri Department of Natural Resources
State or Federal agency and bureau

In my opinion, the property meets does not meet the National Register criteria.
(See continuation sheet for additional comments [].)

Signature of certifying official/Title

State or Federal agency and bureau

4. National Park Service Certification

I hereby certify that the property is:

- entered in the National Register
See continuation sheet [].
- determined eligible for the
National Register
See continuation sheet [].
- determined not eligible for the
National Register.
- removed from the
National Register
- other, explain
See continuation sheet [].

Signature of the Keeper

Date

5. Classification

Ownership of Property	Category of Property	Number of Resources within Property	
		Contributing	Noncontributing
<input checked="" type="checkbox"/> private	<input checked="" type="checkbox"/> building(s)	<u>1</u>	<u>0</u> buildings
<input type="checkbox"/> public-local	<input type="checkbox"/> district		
<input type="checkbox"/> public-State	<input type="checkbox"/> site	<u>0</u>	<u>0</u> sites
<input type="checkbox"/> public-Federal	<input type="checkbox"/> structure	<u>0</u>	<u>0</u> structures
	<input type="checkbox"/> object	<u>0</u>	<u>0</u> objects
		<u>1</u>	<u>0</u> Total

Number of contributing resources
 previously listed in the National
 Register.

Name of related multiple property listing.

n/a

0

6. Function or Use

Historic Function
Domestic/single dwelling

Current Functions
Vacant/not in use

7. Description

Architectural Classification
Queen Anne

Materials
 foundation concrete
 walls wood

 roof asphalt
 other brick

Narrative Description

(Describe the historic and current condition of the property on one or more continuation sheets.)

8. Statement of Significance

Applicable National Register Criteria

A Property is associated with events that have made a significant contribution to the broad patterns of our history

B Property is associated with the lives of persons significant in our past.

C Property embodies the distinctive characteristics of a type, period, or method of construction or represents the work of a master, or possesses high artistic values, or represents a significant and distinguishable entity whose components lack individual distinction.

D Property has yielded, or is likely to yield, information important in prehistory or history.

Criteria Considerations

Property is:

A owned by a religious institution or used for religious purposes.

B removed from its original location.

C a birthplace or grave.

D a cemetery.

E a reconstructed building, object, or structure.

F a commemorative property.

G less than 50 years of age or achieved significance within the past 50 years.

Areas of Significance

Architecture

Periods of Significance

circa 1901-1902

Significant Dates

n/a

Significant Person(s)

n/a

Cultural Affiliation

n/a

Architect/Builder

Bell, M. Fred/unknown

Narrative Statement of Significance

(Explain the significance of the property on one or more continuation sheets.)

9. Major Bibliographic References

Bibliography

(Cite the books, articles and other sources used in preparing this form on one or more continuation sheets.)

Previous documentation on file (NPS):

preliminary determination of individual listing (36 CFR 67) has been requested

previously listed in the National Register

previously determined eligible by the National Register

designated a National Historic Landmark

recorded by Historic American Buildings Survey

recorded by Historic American Engineering Record

Primary location of additional data:

State Historic Preservation Office

Other State Agency

Federal Agency

Local Government

University

Other:

Name of repository: _____

10. Geographical Data

Acreage of Property less than one acre

UTM References

A. Zone	Easting	Northing	B. Zone	Easting	Northing
15	591590	4300980			
C. Zone	Easting	Northing	D. Zone	Easting	Northing

[] See continuation sheet

Verbal Boundary Description

(Describe the boundaries of the property on a continuation sheet.)

Boundary Justification

(Explain why the boundaries were selected on a continuation sheet.)

11. Form Prepared By

name/title see continuation sheet
organization _____ date _____
street & number _____ telephone _____
city or town _____ state _____ zip code _____

Additional Documentation

Submit the following items with the completed form:

Continuation Sheets

Maps

- A USGS map (7.5 or 15 minute series) indicating the property's location.
- A Sketch map for historic districts and properties having large acreage or numerous resources.

Photographs

Representative black and white photographs of the property.

Additional Items

(Check with the SHPO or FPO for any additional items)

Property Owner

(Complete this item at the request of SHPO or FPO.)

name Gene and Marcia Hamilton
street & number 209 East Ninth Street telephone 573/642-4159
city or town Fulton state MO zip code 65251

United States Department of the Interior
National Park Service

NATIONAL REGISTER OF HISTORIC PLACES
CONTINUATION SHEET

Section 7 Page 1

Brandon-Bell-Collier House
Callaway County, MO

Summary: The Brandon-Bell-Collier House, 207 East Ninth Street, Fulton, Callaway County, is a two story south facing Queen Anne free classic frame house, of irregular shape. It stands unusually close to the street in an older residential neighborhood containing houses constructed between the 1880's and the late 1920's. The beveled and shiplap sided house rests on a molded concrete stone-look block foundation, with one chimney. The original house which was probably one room over two rooms plus front and side porch constructed ca,1862, was remodeled by Fulton architect M. Fred Bell circa 1901-02, when the two story four room front was added, plus a new south porch, orienting the house closer to the street. A west bay room appears to have been added later, with all rooms in place by 1917, when Samuel B. Collier owned the house.

Narrative: The original portion of this house appears to have been a rectangular two story house of three rooms, with a front and east side porch. The addition, added during Bell's remodeling, is also a nearly rectangular two story construction of two rooms on each floor which is perpendicular to the original house's gable orientation. The new front is wider than the original house. The asphalt shingled roof is of moderate pitch (12:12±): a gable front over the east front half and a cross gable to the west with a N-S gable on the rear (original house) wing, a fourth gable on the one story rear kitchen room, a primarily flat roof on the front porch which serves as the floor for a second story balcony and on the west facing single story angled bay, and a shed roof on the east screened in porch. There is a two room cellar beneath the kitchen housing the boiler and water heater; the rest of the house has a crawl space. Windows are one over one double hung with four inch unmilled casings and crown mold cornices, unless otherwise noted. Siding on the south facade, east and west sides is drop shiplap, that on the back of these rooms and the wing is beveled with four inch reveal.

There have been relatively few changes to the house after its new facade was created in circa 1901-1902. The kitchen space may have had a fairly major remodeling later when the in-swinging ten-light paired sash windows were added. A small eight and a half feet by twelve feet angled bay room was added where the south west front meets the original house rear wing. The offset was four and a half feet, and the bay extends four feet beyond the west side of the facade.

The facade or south elevation has two two-story bays, the east one projecting one and a half feet. This bay has a centered ebonized wooden front door with large oval beveled glass window in a framed rectangular panel accented at each corner by applied garland; applied garland is also present in the lower framed horizontal panel. Above the door within the door surround is a leaded art glass transom of geometric design and centered fleur-de-lis. The surround is unmilled one by fours with cornice of a two inch board with applied half beads and crown mould above. Directly above this entrance is a second story door with casing and cornice which opens onto the roofless balcony on the flat roof of the first floor porch. Directly above this door in the pedimented gable is a round top window with one wooden keystone at top center and a narrow half round drip edge which follows the upper curved portion of its casing. The front porch centered on this bay is thirteen and a half feet wide by six feet ten inches deep with tongue and groove flooring and water board. Four full round fluted columns and two half squared fluted wall attached columns rest upon twenty-three inch high chamfered pedestals with one inch by four inch base boards topped with quarter round and narrow cove mould and bullnose edged square tops. Column capitals are a variation on ionic with four corner curls, the two half capitals and one full capital are missing, they wrap around the narrowed straight section of column above the fluted column. (see photos 1 and 2) The porch entablature is highly decorated: it is approximately twelve inches wide with a one and a half inch half round attached near the lower edge, two inch diameter half beads are applied within the next three inches, then a three inch moulding comprised of a cove and wider band of egg and dart, then a narrow

United States Department of the Interior
National Park Service

NATIONAL REGISTER OF HISTORIC PLACES
CONTINUATION SHEET

Section 7 Page 2

Brandon-Bell-Collier House
Callaway County, MO

space and a three inch band of shallow wide dentil mould, above which is a one inch band of connected wooden beads at the frieze soffit junction. On the fascia board to the roof shingles is an egg and dart crown mould. (see photo 2) Two and three-quarter inch diameter turned spindles with foot and hand rail bridge between the column bases, except on the west side where there originally was another set of steps, now missing. The porch roof is flat on the top but has narrow hipped sides on the three exposed sides covered with roofing shingles. On the flat area is a low balustrade with rectangular spindles and seven inch by seven inch corner posts with simple caps. The corners of this front most bay have highly decorated pilaster corner boards from the drip edge to the second story frieze, comprised of one by six boards with vertically applied half- round, small crown mould and one by material applied horizontally and vertically to indicate a pedestal, rings and capital. (see sketch) Corner boards are present on every projecting cornice with those on the front two rooms (five corners) being much wider and having the pilaster detailing. The frieze is also decorated, having a flat band of wood with an attached half-round near the lower edge, a narrow string of connected beads, and large shallow wide dentils. This frieze follows a horizontal line around the east, south and west sides of the front rooms, the front gable and west end gable. Quarter-round connects the frieze and narrow soffit; the narrow fascia has egg-and-dart crown mould to the roof edge. Hidden gutters are evident but covered now, on the east side of the east front room and the front of the west front room. The facade of the other front room to the west presents a centered four foot wide single fixed sash with leaded art glass transom above which matches that over the front door. Between the sash and transom is a band with rounded dentils with narrow crown mould above. Directly above in the second story is a double hung one over one window with a horizontally applied half-round on the otherwise plain lintel with crown. An oval single in-swinging sash window is centered to each side. These oval windows have four wooden key stones, and one has partial remains of small curved crown shaped drip mould following the upper radius.

On the west side, the south most room continues the shiplap siding, roof and gable entablatures as discussed on the south facade. Windows, vertically aligned, one in each floor, are near the south corner. The first floor window has two horizontally applied half rounds on its lintel board; the second story window has one. Centered in the pedimented gable is a round top wood slatted vent with keystone. Originally the next room was set back four and a half feet to the east; at some later date a single story nearly flat roofed angled bay room with a window in each of three sides was added which projects four feet past the front west room. The original in-set rear wing is two stories with two windows in the second story, one just off center to the south and above the center bay window, the other near the north corner. In line with the north edge of the north window is a very small six light single sash window with no cornice. A corner board finishes the two story wing running from frieze to drip edge above the water table board. A northernmost single story room connects flush with the two story wing corner. This room has a single window slightly off-center to the south and is gable sided, as is the two story wing. These rooms plus the back in-set on the south west room have beveled wooden siding with four inch reveal; the frieze board is narrower and is not decorated.

The north end is clad in beveled siding, has a gable end on the visible second story end with exterior centered chimney and on the single story north most room. This room has two in-swinging casement windows with a pair of sashes having ten lights, each centered in each half of the wall with no cornices. An exterior stairway to the cellar room is housed in a triangular shaped enclosure having its highest point at the east lower corner of the east window. From this back side are visible the west bay side, north end of the east facing screened in side porch, and the north side of the southeast front room with its single window in the interior stairway landing near the east corner.

United States Department of the Interior
National Park Service

**NATIONAL REGISTER OF HISTORIC PLACES
CONTINUATION SHEET**

Section 7 Page 3

**Brandon-Bell-Collier House
Callaway County, MO**

The east side has another corniceless casement window in the single story back room. Immediately to the south of its casing the screened in porch projects five and a half feet. The porch has low walls of beaded boards within the framing to support the shed roof above which are six screened panels on the east side and two narrow ones, one on either side of the screen door on the north side. Three wooden steps lead up from the yard. Three doors enter the house from this porch, one near its north exterior entrance which has twelve lights and enters the rear kitchen via two steps, one having a single upper light and two vertical lower panels near the center of the two story wing and enters the dining room, and a five panel door on the north side of the southeast corner room or reception hall. To the south of the dining room door is a window. Rising above the porch is the second story of the wing with two windows, one very near the north corner, the second approximately four feet from the inside corner junction of the south facing rooms and the two story wing.

The east side of the southeast rooms has a centered four foot single fixed sash with a third fleur-de-lis transom above with dentils and small crown between, and a narrower window directly above in the second story with one half round attached horizontally to its lintel board below the crown/cornice. This side again has the decorated wide corner boards and frieze as described earlier.

Interior features include: a now darkened natural finished corner pine staircase in the reception hall, milled wide casings of various patterns throughout the house (except kitchen) with door and window cornices, base blocks and baseboard with milled cap, multi-paneled wood doors, two fireplaces with glazed ceramic tile face and hearth (mantels have been removed but are available) back to back in the corners of the dining room and reception hall. A rectangular spandrel with turned spindles is at the top of the doorway from reception hall to parlor and portiere rod brackets below. This opening also has a pair of two foot wide doors with six vertical raised panels in the top half, a horizontal raised panel then two taller vertical raised panels in the lower third. The second floor bathroom has a footed tub and the east most oval window. The second floor east bedroom includes the door to the front porch top balcony. The second floor west bedroom has the center double hung window and the west most oval window in its south wall.

Further detail of staircase: The staircase has an Arts and Crafts feel in its square column pedestals, landing newel and top newel posts with small recessed multiple unframed panels, plain rectangular balustrade spindles, built-in L shaped bench with nearly square multiple panels on the wall behind. The lower newel is a ceiling height fluted round column on a pedestal base. Two half squared matching fluted columns are attached to the stair wall and directly across the room on the opposite wall, being connected across the ceiling by a finished wooden beam with crown mould to the ceiling and large brackets where the round newel and west wall half square newel meet the beam. The last three steps descending from the second floor are contoured to round out into the room. (see photo 6) The only first floor closet is under the stairway and has a four panel door.

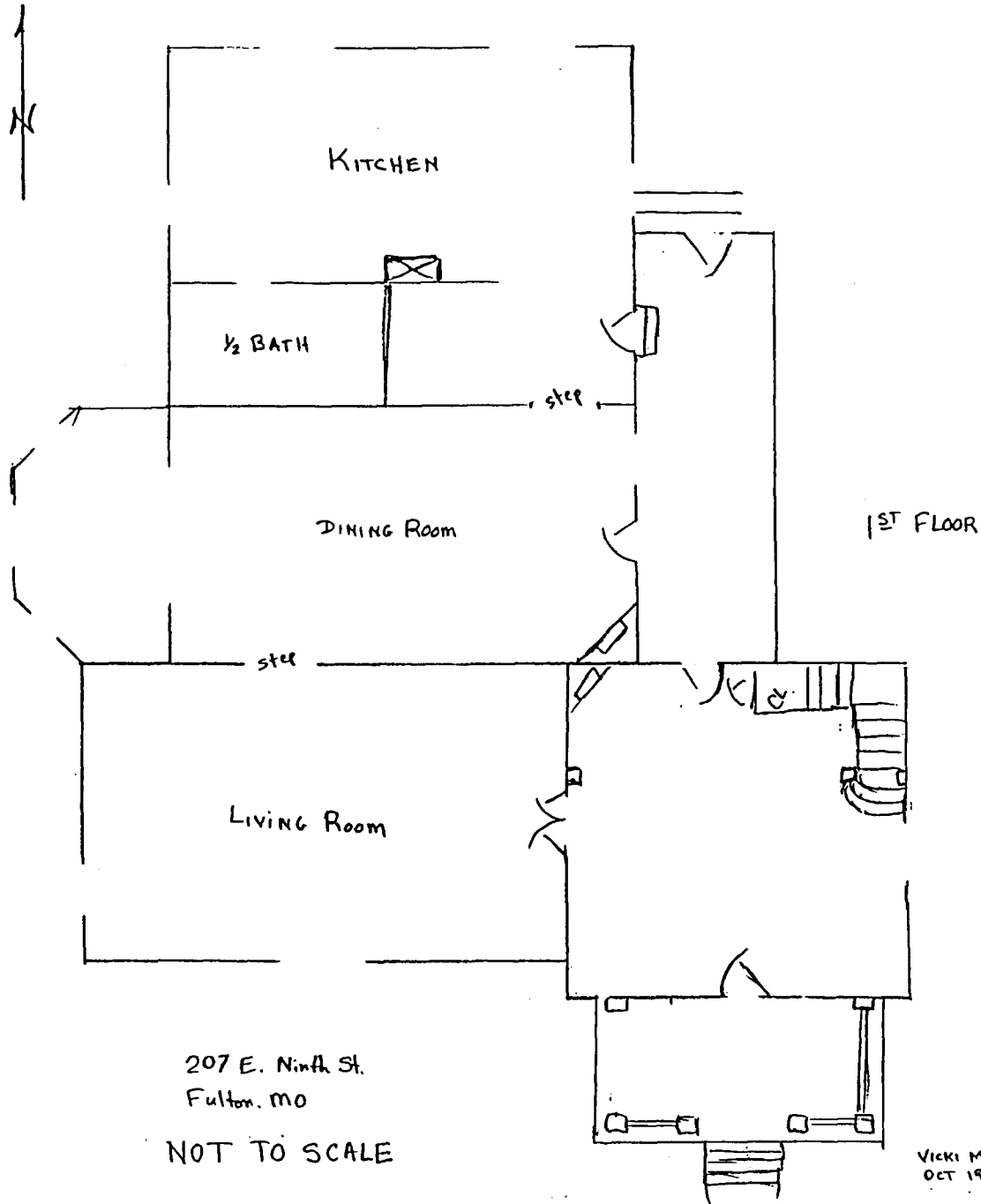
The rectangular city lot has two large trees in front of the house, a couple of young silver maples and three young coniferous trees in the back yard, and two sections of picket fence in the east side yard: one near the southeast corner, while the other has collapsed near the north east corner of the screened porch. The house sits unusually close to the street as compared to other houses on the street.

United States Department of the Interior
National Park Service

NATIONAL REGISTER OF HISTORIC PLACES
CONTINUATION SHEET

Section 7 Page 4

Brandon-Bell-Collier House
Callaway County, MO

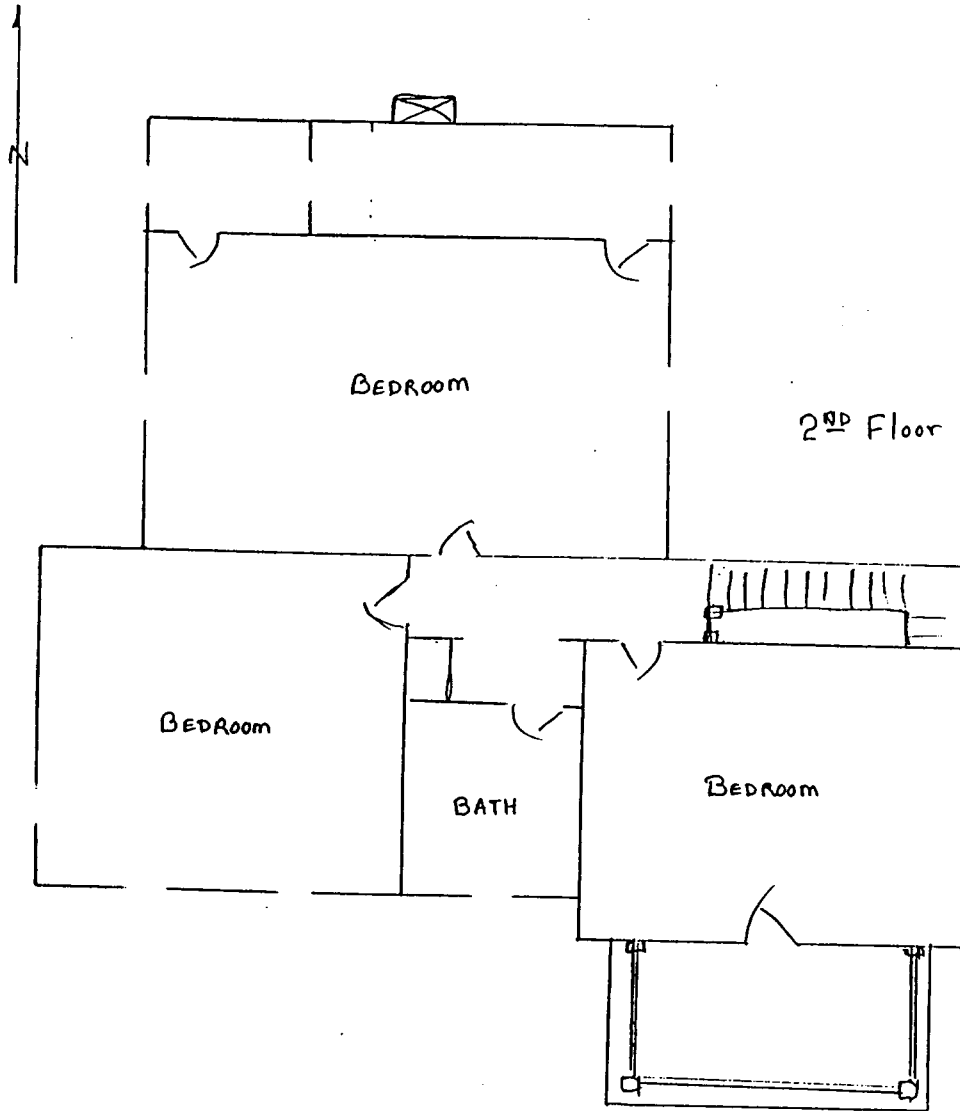


United States Department of the Interior
National Park Service

NATIONAL REGISTER OF HISTORIC PLACES
CONTINUATION SHEET

Section 7 Page 5

Brandon-Bell-Collier House
Callaway County, MO



207 E. Ninth St.
Fulton, MO

NOT TO SCALE

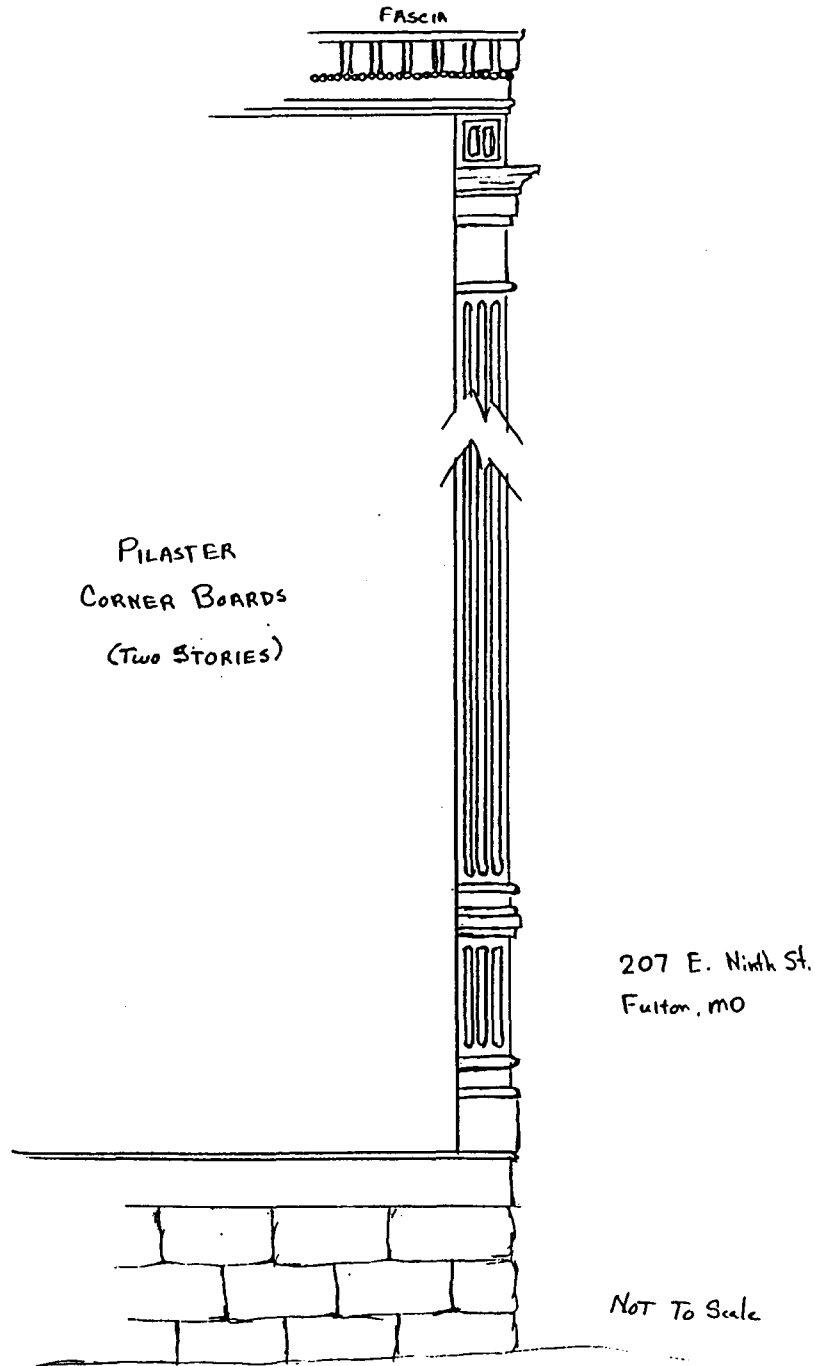
Vicki M'David
10-21-98

United States Department of the Interior
National Park Service

NATIONAL REGISTER OF HISTORIC PLACES
CONTINUATION SHEET

Section 7 Page 6

Brandon-Bell-Collier House
Callaway County, MO



NOT TO SCALE

VICKI MCDANIEL

OCT 1998

United States Department of the Interior
National Park Service

NATIONAL REGISTER OF HISTORIC PLACES
CONTINUATION SHEET

Section 8 Page 7

Brandon-Bell-Collier House
Callaway County, MO

Summary: The Brandon-Bell-Collier House, 207 East Ninth Street, Fulton, Callaway County, is significant under Criterion C in the area of architecture. The original portion of the house was constructed circa 1862 and passed through several owners before its acquisition in 1900 by M. Fred Bell, a Fulton architect and businessman noted for his many and varied designs of commercial, institutional, religious, and residential buildings.¹ Over the next year, Bell undertook a major remodeling of the house, expanding it and adding contemporary details which converted the four room, rectangular house to an irregular plan late Queen Anne style cottage with Colonial Revival elements. The remodeled house reflected Bell's long interest in the Queen Anne style, a style he employed on the majority of the residential properties which he designed and built in Fulton and which he advocated for small homes in his publications. As a remodeling, the Brandon-Bell-Collier House is unlike the other two already listed speculative cottages designed and built by Bell², but, like the other two properties, it also represents his practical approach to architecture as a business.³ An excellent example of the work of the prolific master architect, the house retains its integrity of design, materials, workmanship and location. The period of significance is set at circa 1901-1902, the likely time period in which Bell accomplished the remodeling.

Narrative: On February 24, 1860, Abner Brandon bought for \$350 what was then platted as one and one-half lots at 207 East Ninth Street in Fulton. On July 14, 1862, Brandon sold the property to S.J. Marlow for \$1,500. Given the short time span and the substantial increase in price, Brandon probably constructed or had constructed a building on the lot and a half during his ownership. By 1890, the property was owned by Hugo Herckenrath, who sold it to Reverend Robert Morrison in October of that year. According to the October 16, 1890, issue of the Fulton (MO) Telegraph "Hugo Herckenrath sold Rev. Robt. Morrison his *old house* [emphasis added], with lot 75 feet front, running back to alley, . . ." ⁴ Reverend Morrison retained the property for only two months; on December 3, he sold it to local architect Morris Frederick Bell.

The Boss Architect: General M. Fred Bell

In 1849, Morris Frederick Bell was born in Maryland. Apprenticed at the age of thirteen to the "builder's trade" for three years, he furthered his education in architecture at Duff's College in Pittsburgh. In 1869, he moved to Mexico, Missouri, where he lived for two years. In 1871, he resided in Lawrence, Kansas, for four months, before returning to Missouri, where he settled permanently in Fulton. In 1873, Bell married Maria Dreps. When Bell came to Fulton at the age of 21, in 1871, he was already a practicing architect.⁵ According to John Albury Bryan, in Missouri's Contribution to American Architecture, Bell was the only Missouri architect admitted to the American Institute of Architects in 1881.⁶ In addition to his occupation as an architect he was very active in local businesses and public service, including service as secretary of

¹Warrantee deeds to 207 East Ninth St, Fulton, MO (December 3, 1900 and December 1, 1902).

²M. Fred Bell Speculative Cottage (NRHP 1995) and M. Fred Bell Rental Cottage (NRHP 1997).

³M. Fred Bell, Typical American Homes (publisher unknown, ca. 1906) front cover.

⁴John P. Bell, ed., Fulton (MO) Telegraph, October 16, 1890, p. 7.

⁵History of Callaway County, pp. 621-622.

⁶Bryan, ed., Missouri's Contribution to American Architecture (St. Louis: St. Louis Architectural Club, 1928), p. 52.

United States Department of the Interior
National Park Service

**NATIONAL REGISTER OF HISTORIC PLACES
CONTINUATION SHEET**

Section 8 Page 8

**Brandon-Bell-Collier House
Callaway County, MO**

the Fulton Fire Brick Co.; member of the City Council; Adjutant General of the Missouri National Guard during the Spanish-American War (following this service, he was often referred to as General Bell); and member of the Board of Trustees of the Missouri Deaf and Dumb School, where he also taught a carpentry class. Bell served as the state architect for Missouri for a time. He was associate architect of the State Insane Asylum in Fulton and Nevada and the State Deaf and Dumb Institution in Fulton. He also served on the boards of many other private and state institutions, such as the Southern Bank of Fulton, Stephens College in Columbia, MO, the Howard Fire Clay Manufacturing Company, the Sun Printing Company, and the Boonville State Reformatory for Boys His private enterprises included land developer and landlord.

As early as 1880, the Fulton Telegraph proudly referred to the city's adopted son as "boss architect of this section of the State."⁷ According to the 1884 History of Callaway County, "He is widely and well known throughout the West as one of the most capable and successful architects in this section of the country."⁸ In a tribute to Bell in the Fulton Sun in 1897, the praise was equally effusive: "The genial personality of the General is as refreshing as an April shower, and no one has ever met him without feeling animated through coming in contact with his breezy nature. A gentleman by birth, he is known far and wide as a public spirited man, a man of integrity, sound judgement and firm opinions, which are the characteristics that have made him successful in the past and inspires, among his thousands of friends, a firm confidence in his future."⁹ The Fulton Sun further noted that Bell was "thoroughly versed in the details of his chosen profession his abilities soon began to attract attention with the result that today there are scattered throughout the state many buildings which will ever stand as a monument of all that is beautiful, substantial and useful."¹⁰ Some of the most outstanding extant examples of these monuments are the red brick buildings surrounding the Quadrangle on the University of Missouri, Columbia campus. The cottage on Asylum (304 East Fifth) Street was erected during the time these University buildings were designed and constructed.¹¹

In addition to his architectural practice, Bell was also an innovative businessman. In 1882, he established Fulton's telephone office, apparently under direct license from Alexander Graham Bell, and operated the company until his death; this was the first telephone service in Missouri outside of Kansas City and St. Louis.

207 East Ninth Street

⁷John B. Williams, pub., Fulton (MO) Telegraph, January 14, 1880, p. 4.

⁸History of Callaway County, p. 622.

⁹D. R. Stimble, "Gen. Bell left imprint on Missouri", Fulton Sun-Gazette, April 27, 1980, p. 12. (contains quotes from article "A Prominent Citizen - General M. Fred Bell, Adjutant General, State of Missouri", published in the Fulton Sun 1897).

¹⁰Stimble, p. 12.

¹¹Marian Morris Ohman, "Initial Study of Architect M. F. Bell, 1849 - 1929, His Contributions to the State of Missouri" (Columbia, Missouri: 1970), Kingdom of Callaway Historical Society, Fulton, MO, p. 25.

United States Department of the Interior
National Park Service

NATIONAL REGISTER OF HISTORIC PLACES
CONTINUATION SHEET

Section 8 Page 9

Brandon-Bell-Collier House
Callaway County, MO

The property at 207 East Ninth Street was purchased by Bell December 3, 1900, from Rev. Robert Morrison. The new two story front was added to the house and the residential property sold to Samuel Barry Collier on December 1, 1902; Collier lived in the house for the next twenty-four years.¹² Although the new facade has many Colonial Revival characteristics, its detailing and asymmetry make it a good example of Virginia and Lee McAlester's Queen Anne free classic.¹³ Bell seems to have had a struggle parting with his long time favorite Queen Anne style, building the less decorated Queen Anne free classic styling until at least 1908.

Since this was a speculatively remodeled residence, Bell redesigned the home using only his own ideas, plans and theories. Bell was very willing to introduce innovations in his designs. He did not like the idea of simply using European design without adapting it to the American climate and ideals as he discussed: "We do not care for pure English style of houses, when we can modify other styles far more beautiful, to better suit our climate and American ideas, and, we think, secure an effect more picturesque. . . . We are living in a progressive age, and, as American people, think and act for ourselves. . . . Doubtless we may introduce, from abroad, methods of design which meet our requirements, but we must not hesitate to eliminate those portions for which we have no use, or to make such changes as our circumstances demand."¹⁴ Bell certainly took liberties with design modifications with this house. As with many houses he designed, he here has combined several different architectural styles.

The oldest design element Bell has used in this house are the oval and round top windows with keystones which were most prevalent in the early to mid 1800's. Italianate type chamfered column pedestals support classical fluted columns with composite modified ionic style capitals. Between these columns are Queen Anne turned balustrade spindles. The door and window leaded art glass transoms, asymmetrical facade with front wall projection, and one over one windows are also from the Queen Anne spindlework style. Then Bell most extensively used characteristics of the Queen Anne free classic style which closely resembles the asymmetrical Colonial Revival house style¹⁵, including its cross gable roof, cornice line dentils, columns raised on pedestals, simple door surround and the closed gable pediment. He has also used a couple of Colonial Revival features in the entry door with applied garlands and the highly decorated pilaster corner boards and composite frieze. Plus interior features with an Arts and Crafts feel. The angled bay on the west side appears to have been added at a somewhat later date.

The house has some of the desirable features Bell discussed in his booklet entitled: Pleasant Homes and HOW TO MAKE THEM!, published in 1883. "If possible, in selecting a site, select high ground; a few forest trees interspersed would add much to the scenery. . . . If possible, place the house on the highest point, and be sure to build your foundation high above ground not only giving a grander appearance to your home and better means for under-floor ventilation, but also affording better advantages for exterior

¹²Warrantee deeds to 207 East Ninth Street, Fulton, MO, dated December 1, 1902 and September 10, 1926. ; and Fulton (MO) Weekly Gazette, December 5, 1902, p.8.

¹³Virginia and Lee McAlester, A Field Guide to American Houses (New York: Alfred A. Knopf, 1984), pp.263-264.

¹⁴M. Fred Bell, Pleasant Homes and HOW TO MAKE THEM! (publisher unknown, 1883), Western Historical Manuscript Collection, 23 Ellis Library, University of Missouri-Columbia, Columbia, MO.

¹⁵McAlester, p. 268.

United States Department of the Interior
National Park Service

**NATIONAL REGISTER OF HISTORIC PLACES
CONTINUATION SHEET**

Section 8 Page 10

**Brandon-Bell-Collier House
Callaway County, MO**

grading.”¹⁶ The existing house was on a relatively high spot and the new front porch has five steps making the house rather tall and grand.

Bell was still committed to his 1883 theories on house remodeling as discussed in his booklet Pleasant Homes and HOW TO MAKE THEM! “The architect is frequently called upon to remodel houses to develop harmony out of discord, beauty out of commonality, etc. Frequently persons buy a desirable lot, on which is a house of such solid and substantial character as to render its destruction unadvisable, and even when perhaps, in a dilapidated condition its preservation is in a high degree desirable, . . .” According to Bell’s description of a desirable lot, this one fits his criteria of location and topography. The existing house was likely of “solid and substantial character”, so Bell put his talents to work adding a modern front to make the house appealing to the next buyer as he also suggests in the book’s “Remodeling Houses” section. “Owner’s having homes to let or sell will find a better class of tenants, or a more ready sale for their houses when they present pleasant, home-like appearance.” In Bell’s opinion it could require more thought and talent to remodel a house than to execute a new design. “The experience of the writer has him to believe greater care and more thorough study of all points involved should be given to this class of work than is generally required for new buildings.”

Both 302 (the Bell Rental Cottage) and 304 (the Bell Speculative Cottage) East Fifth Street were constructed 1893 or 1894, six to seven years before the Ninth Street house was remodeled. The Brandon-Bell-Collier House represents an expansion of his speculative business ventures.

Architectural Significance:

The Queen Anne substyle of the Victorian period in architecture was developed in England by Norman Shaw. The style derived its name from an alleged resemblance to English rural architecture during the time of Queen Anne. Its basic elements were actually drawn from English country houses over a wide range of time,¹⁷ with late medieval buildings the primary stylistic source. The style was meant to be executed in brick, but American architects tended to interpret the style in wood, which accounted for many of the American variations on the English style.¹⁸

With the introduction of balloon framing, noted by Bell in his book; industrialized production of construction materials and decorative elements; increased ease in the transportation of materials, particularly dimension lumber, via the growing railroad system¹⁹; and the dissemination of plans and other information through such publications as The American Architect and Building News,²⁰ the flamboyant American Queen Anne style rapidly spread to rural America. M. Fred Bell likely would have had some exposure to

¹⁶Bell, Pleasant Homes . . . , p. 10.

¹⁷Alan Gowans, Styles and Types of North American Architecture: Social Function and Cultural Expression (New York: HarperCollins, 1992), p. 199.

¹⁸McAlester, p. 268.

¹⁹McAlester, p. 239.

²⁰McAlester, p. 268.

United States Department of the Interior
National Park Service

NATIONAL REGISTER OF HISTORIC PLACES
CONTINUATION SHEET

Section 8 Page 11

Brandon-Bell-Collier House
Callaway County, MO

the style during his years of training at Duff's college in Pittsburgh in the late 1860's,²¹ which would have been reinforced by professional publications in the 1870s-1890s.²²

Bell expressed his own thoughts on domestic architecture and home design in 1883, when he published his booklet entitled, Pleasant Homes and HOW TO MAKE THEM! In this publication he commented on English styles: "We do not care for pure English style of houses when we can modify other styles far more beautiful, to better suit our climate and American ideals. . ."²³ A Fulton newspaper described Bell as "thoroughly versed in the details of his chosen profession. His abilities soon began to attract attention with the result that today there are scattered throughout the state many buildings which will ever stand as a monument of all that is beautiful, substantial and useful."²⁴ Some of the most outstanding extant examples of Bell's designs are the red brick buildings surrounding the Francis Quadrangle on the University of Missouri, Columbia campus.

As the popular styles changed so did Bell's designs. During his career, he designed in a variety of styles including French Second Empire, Classical, High Victorian Gothic, Romanesque Revival elements, Eclectic, Italianate, Georgian Revival, Craftsman and his favorite for domestic architecture in the 1870's through early 1900's, Queen Anne.²⁵ His last homes in Fulton were Bungalows. He designed many large and prominent buildings for the State of Missouri (e.g., University of Missouri-Columbia, State Reform School, State Mental Hospitals #1 & 3, State Penitentiary Warden's house, State School for the Deaf.) for businessmen (e.g., Palace Hotel of Fulton, MO; Sun printing office, Fulton, MO; Herald Newspaper building, Columbia, MO; Southwestern Telephone building, Fulton, MO.) for local governments (e.g., the remodeling of the Callaway Co. Court House, Audrain Co. Court House, Center School, Fulton, MO; Public Library, Fulton, MO) for churches (e.g., First Presbyterian, Fulton, MO) and for citizens (approximately fifty extant Fulton homes are attributed to Bell).

Circa 1906, he published his own design pattern book for subscribers, Typical American Homes. The loose leaf book contained designs in the Queen Anne, Craftsman, and Colonial Revival styles. On the cover Bell boasted of his nation wide clientele, and he asserted "when desired, references will be given in any state of the Union." According to Bell, the aim of his pattern book was to present "common-sense, artistic houses, for practical people, . . ." He advised subscribers to "make your home to live in and enjoy, as well as a pleasing picture for the public to admire."²⁶

²¹History of Callaway County, Missouri (St. Louis: National Historical Company, 1884), p. 622.

²²McAlester, p. 268.

²³Bell, p. unknown (excerpt found in "Gen. Bell championed ornate architecture", Fulton (MO) Sun-Gazette, April 27, 1980, p. 13.

²⁴Stimble, p. 12.

²⁵Marian Morris Ohman, "Initial Study of Architect M. F. Bell, 1849 - 1929, His Contributions to the State of Missouri" (Columbia, Missouri: 1970), Kingdom of Callaway Historical Society, Fulton, MO, p. 25.

²⁶M. Fred Bell, Typical American Homes, introduction page.

United States Department of the Interior
National Park Service

NATIONAL REGISTER OF HISTORIC PLACES
CONTINUATION SHEET

Section 8 Page 12

Brandon-Bell-Collier House
Callaway County, MO

Bell was a proponent of smaller well designed homes, as he revealed in "COTTAGE ARCHITECTURE" (pp. 9-10): "It does not necessarily follow that a home must be a large, pretentious structure, to be beautiful; on the contrary, many of the most cozy, happy looking, are the beautiful little cottages, nestling amid flowers and vine clad arbors; it is this class of homes that deserve popularity, in as much as they meet the wants of the small family, embarking on the sea of life. They better suit the young man of business; the young professional man; they are less expense to keep in running order; less labor for the inmates; and are more homelike in appearance."

Given the number of extant examples of the style, the Queen Anne was arguably Bell's favorite style. Both the cottages at 302 and 304 East Fifth Street (NRHP 1997 and 1995, respectively), as well as own own home and a number other Bell designed properties in Fulton, were constructed in the style. In his booklet entitled; Pleasant Homes and HOW TO MAKE THEM!, published in 1884, Bell provided his manifesto on the style: "One great advantage in good design is the introduction of irregularities of outline, viz: angles, projections of roofs, canopies, verandas, and bay-windows, which, together with the intersections of gables, dormers, etc., serve to obtain the ever-varying sentiment and expression the Supreme Architect gave to the rivers and hills. The repetition of angles, gables and with the lights and shades playing fancies on the walls, show how delicately and tenderly nature assists the sympathetic architect."

At least one other example of a Bell remodeling is extant. In that case, however, the remodeling was of an original Bell designed house. Circa 1894, Bell constructed a cottage at 302 East Fifth Street for rental purposes. About ten years later, he both remodeled and enlarged the house, adding more elaborate details to the interior and exterior and, in general, imposing a more complex form and plan which brought the house closer to the ideal of the Queen Anne style.

United States Department of the Interior
National Park Service

**NATIONAL REGISTER OF HISTORIC PLACES
CONTINUATION SHEET**

Section 9,10,11 Page 13

**Brandon-Bell-Collier House
Callaway County, MO**

9. Major Bibliographic References

1884 History of Callaway County

1917 Sanborn Map of Futon, Missouri

Pleasant Homes and HOW TO MAKE THEM! by M. Fred Bell (copy from Western Manuscripts Collection)

Warranty Deeds on 207 East Ninth Street, Fulton, MO

Typical American Homes by M. Fred Bell

10. Geographical Data

VERBAL BOUNDARY DESCRIPTION: Lot 9, block 25, New City Plat, Fulton, Callaway County, MO.

BOUNDARY JUSTIFICATION: The boundary includes all the city lot historically associated with the Brandon-Bell-Collier House.

11. Form Prepared By

1. Vicki McDaniel
5 Bartley Lane
Fulton, MO 65251-2110
573/642-2851
October 15, 1998
original draft nomination, items 1-11

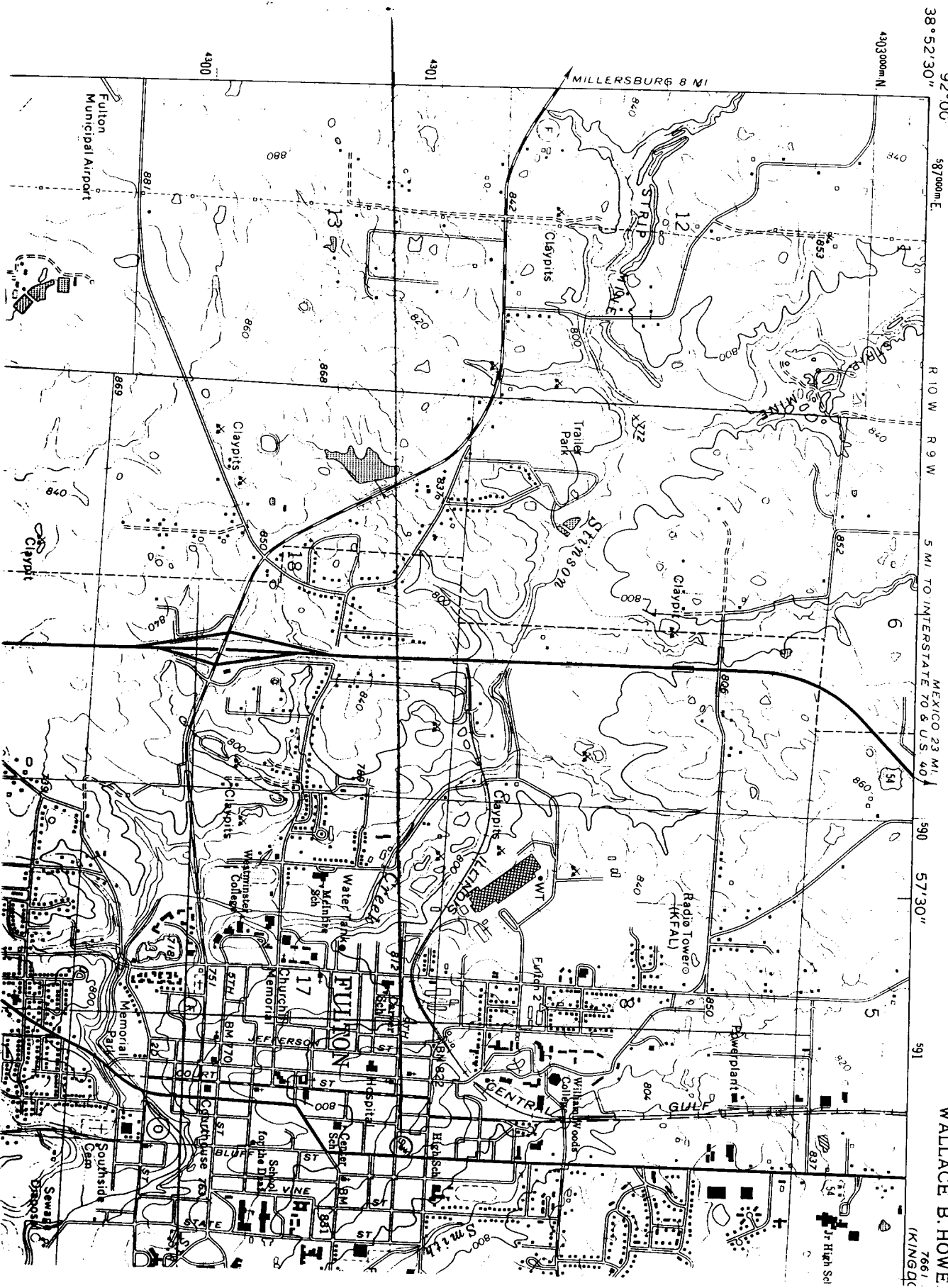
2. Steven E. Mitchell
Assistant Director
Historic Preservation Program
Division of State Parks
Department of Natural Resources
P.O. Box 176
Jefferson City, MO 65101
573/751-4692
October 23, 1998
editor and revisions, items 1-11

CALLAWAY COUNTY, MO
15/591590/4300980

7561 N.E
MILLERSBURG NE

UNITED STATES
DEPARTMENT OF THE INTERIOR
GEOLOGICAL SURVEY

STATE OF
DEPARTMENT OF N.
WALLACE B. HOWE



92° 00'
38° 52' 30"

87° 00' 00" E

R 10 W R 9 W

5 MI TO INTERSTATE 70 & U.S. 40

590 57' 30"

591

7661
(KINGDC)

Brandon - Bell - Collier House

Callaway County MO

Vicki McDaniel

September 1998

5 Bartley Lane, Fulton MO 65251

cameras facing north

1 of 7



Brandon-Bell-Collier House

Callaway County MO

Vicki McDaniel

September 1998

5 Bartley Lane, Fulton MO 65251

camera facing north (detail of
porch column and frieze)

2 of 7



Brandon - Bell - Collier House

Callaway County MO

Vicki McDaniel

September 1998

5 Bartley Lane, Fulton mo 65251

cameras facing northeast

3 of 7



Brandon-Bell - Collice House

Callaway County MO

Vicki McDaniel

September 1998

5 Bartley Lane, Fulton MO 65251

conceal facing southeast

4 of 7



Brandon-Bell- Collier House

Callaway County mo

Vick. McDaniel

September 1998

5 Bartley Lane, Fulton mo 65251

camera facing southwest

5 of 7



Brandon-Bell-Coffee House

Callaway County mo

Vicki McDaniel

September 1998

5 Bartley Lane, Fulton mo 65251

camera facing northeast

(reception hall stairway)

6 of 7



Brandon-Bell-Colliea House

Callaway County mo

Vicki McDaniell

September 1998

5 Beetley Lane, Fulton mo 65251

carport facing northwest

(doorway to living room)

7 of 7



EXTRA
PHOTOS







