

AFFTON-SAPPINGTON-CONCORD

Inventory of Historic Buildings

1994

Prepared by Esley Hamilton

with the assistance of Ed Williams

**For the St. Louis County Department of Parks and Recreation
Under a grant from the Missouri Department of Natural Resources**

RESEARCH METHODS

The properties in this inventory were assembled from a variety of sources. Grant's Farm and Hardscrabble were included in Historic Buildings in St. Louis County, first published by the St. Louis County Historic Buildings Commission in 1983. Those brief references were expanded here. The Bauernhof, an independently significant building on the Grant's Farm estate, was inventoried separately, and the former location of Hardscrabble, Grant's log cabin home, was included as a site of potential archaeological significance.

Previous thematic surveys had identified properties that were worthy of additional research but did not fit the restricted scope of that particular survey. The inventory of Art Deco and the International Style, for example, led to the identification of the Gravois Gardens subdivision as outstanding in that category. The church survey of 1991 and the school survey of 1992 also identified buildings in those categories.

The Affton Historical Society, which has preserved Oakland, the Louis Benoist House, as a house museum, has conducted research into the history of the area over many years. Jeannine Cook and Ross Wagner of this organization were helpful in identifying properties. Another organization, the Sappington-Concord Historical Society, has recently been formed, and L. H. Bornemann, the president of this group, contributed several suggestions. Jean Fahey Eberle recently published A Starting Point: A History of the Oakville-Mehlville-Concord Village Communities, which was sponsored by the local Chamber of Commerce, and she also suggested properties for further research. Both Mrs. Eberle and Mrs. Cook are members of the St. Louis County Historic Buildings Commission. Over the past fifteen years, other interested citizens have contacted the St. Louis County Parks Department regarding historic properties in this area, and a file has been maintained, even though research could not be undertaken until this time.

As in earlier inventories of unincorporated parts of St. Louis County, special note has been taken of cemeteries, both for the buildings and structures of interest they contain, their design, and their reflection of settlement and social patterns. An effort was also made to identify characteristics of special interest in the six small and little-known municipalities included in the otherwise unincorporated survey area: Grantwood, Lakeshire, Mackenzie, Marlborough, St. George, and Wilbur Park.

Finally, some buildings were noted in a standard windshield survey. In the area of old Affton, the historic heart of this inventory, several houses of perhaps marginal significance were included because they fell within a potential historic district.

Other than Mrs. Eberle's book, the classic reference sources had some information. Walter Scharf's History of St. Louis City and County (1883) has a brief history of early Carondelet Township prepared with the assistance of John Fenton Long and Thomas Jefferson Sappington, two of the worthies of this survey area. William L. Thomas, History of St. Louis County (1911) gives one version of the founding of Affton in Volume I, and has several biographies of notable farmers in Volume II. The History of St. Louis County published in 1920 by the county newspaper, the Watchman-Advocate, emphasizes local businessmen, including illustrations of two of the surviving commercial buildings in Affton. Another useful document was "History of the Sappington Family and Sappington, Missouri," a mimeographed booklet "edited by the Upper Grades of Sappington School" in 1937. Several variant copies are in the collections of the Missouri Historical Society.

The most important source of information for this survey remained primary documents: deeds and probate records. In a few cases, these proved that the traditional dates given elsewhere were off by a year or two. On the other hand, traditional dates must be relied on for most rural buildings, since properties remained in one ownership for too long a period for new construction to be reflected in changing sale prices.

Inventory forms have been numbered according to St. Louis County's locator system. This nine-digit system is based on a coordinated grid that covers the entire county and gives each parcel of land a unique identification. Most county records are keyed to this system, and it is hoped that its inclusion on these inventory forms will facilitate further research.

All photographic negatives are in the files of the St. Louis County Department of Parks and Recreation. Roll and frame numbers have been included on the inventory forms under item three. The roll numbers are assigned by the photo processing companies. Roll and frame numbers have also been marked on the backs of the inventory photos.

Maps for most of the properties are taken from the records of the St. Louis County Department of Revenue, Assessor's Office. They show property lines and subdivision boundaries as well as building outlines, and they often have other data about dimensions and ownership. This mapping system is itself becoming a historic relic; it was begun in the 1930s as a WPA project, and the careful measurements have been abandoned for new buildings. Many non-taxpaying buildings are not included in this mapping system, however, and in those cases, aerial photographs have been supplied. For subdivisions and larger areas, outline property maps have been prepared from the county's base map system.

Inventory forms have been arranged alphabetically and numerically by address. Copies of inventory forms prepared in previous thematic inventories have also been included for convenience of reference. These include the following:

ART DECO, 1987

New gates, New Mt. Sinai Cemetery, 8430 Gravois Road
Edward E. Pounds House, 1114 Laclede Station Road
Joseph D. Keller House, 1118 Laclede Station Road
Crystal Motel, 7746 Watson Road

SOUTH COUNTY, MATTESE TO SUNSET HILLS, 1989

St. John's Evangelical Church (now U.C.C.), 11333 St. John's Church Road

SCHOOLS, 1991

Old Bayless School, 4520 Weber Road
McKenzie School #47, Weber & Mackenzie Roads
Old Ward I School, 5100 Heege Road
Sappington School #49, 11011 Gravois Road at Eddie & Park

CHURCHES, 1992

Eden Evangelical Church (now U.C.C.), 8930 Eden Avenue, Affton
St. Lucas Evangelical Church (now U.C.C.), 11735 Denny Road
Sappington Congregational Church (now residence), 11835 Denny Road

The practice previously employed in some surveys of dividing the inventory forms by township has not been followed here, because the line between Concord and Gravois Townships arbitrarily cuts down the center of Gravois Road, which is in fact the main artery tying the inventory area together. A separate list has been prepared showing properties by municipality or township, and a third list indicates them by school district, since parts of four school districts are included. Finally, a fourth list groups properties by some thematic similarities.

Properties that have already been listed in the National Register of Historic Places have not been included in the present inventory. For the record, they are the following:

NATIONAL REGISTER OF HISTORIC PLACES

Benoist, Louis Auguste, House (Oakland), 7802 Genesta St., Affton (6-23-69)

Coral Court Motel, 7755 Watson Road, Marlborough (4-25-89)

Sappington, Joseph, House, 10734 Clearwater Drive, Affton (10-14-82)

Sappington, Zephaniah, House, 11145 Gravois Road, Crestwood (9-18-80)

Moved to Daniel Boone House, Defiance, St. Charles County

White Haven (Grant-Dent House), 9060 Whitehaven Drive, Grantwood (2-2-79)

National Historic Landmark (6-23-86)

now U. S. Grant National Historic Site, 7400 Grant Road

As noted, the last property on the list has been acquired by the National Park Service. The principal entrance and address of the property have been changed, and planning for restoration and public access are nearly complete. This is the only property in St. Louis County that is part of the National Park System.

PHYSICAL DESCRIPTION

The present survey area is situated at an angle to the cardinal points. It is bounded on the northeast by the River des Peres and the city limits of St. Louis, on the southeast by Interstate 55, on the southwest by Interstate 270, St. Louis's beltway, and on the northwest by the southern city limits of Sunset Hills, Crestwood, Webster Groves, and Shrewsbury. These boundaries omitted a few landmarks that many residents of the area would consider part of their orbit. Cardinal Glennon College, with its tall modernistic tower, and Kenrick Seminary, now a Catholic family center, are located in Shrewsbury, and "Grand View," the former estate of Adolphus Busch and now occupied by the Mill Hill Fathers, is in Sunset Hills.

The boundaries of the present survey area are modern, but they encompass areas that were linked historically. The area is almost entirely within the limits of Congressional Township 44 North Range 6 East and before the advent of modern political townships formed the northwestern portion of Carondelet Township. The main natural feature of this rolling terrain is Gravois Creek, which cuts through the center of the area from northwest to southeast. To a remarkable extent, the actual stream bed has remained free of modern development, and parts of it are protected by Crestwood's White Cliff Park, by Grant's Farm, by the playing fields of the Affton Athletic Association, and by the county's Clydesdale Park. From the 1870s, it has been bordered by the Carondelet and Kirkwood branch of the Missouri Pacific railroad; in the last few years, that line has been converted into a recreational trail, which gives hope for the continued preservation of the creek corridor.

At the south end of the area, Mattis Creek (also spelled Mattese) flows southeast toward the Meramec River. It is less important and less well preserved in this area, but it did attract some early settlement. Most of the Mattese area lies east of I-55 and south of I-270.

With the exception of a few surviving farms, which are mentioned in this survey, most of the survey area is fully suburbanized. One of the last developable spaces in the area, on the east side of Tesson Ferry Road on the north bank of Gravois Creek opposite Clydesdale Park, is currently under development. Of surviving open spaces, more has been preserved for use as cemeteries than as public parks. The county has only four parks. Clydesdale Park, at 117 acres, is the only large one. It is situated on Green Park Road east of Tesson Ferry Road. It opened in 1976 and was later renamed in honor of August A. Busch's interest in that breed of horse. George H. Bohrer Park has 15 acres located south of Lindbergh Boulevard and east of Tesson Ferry. It was acquired in 1950 and later named for a county councilman who died on November 16, 1960 during a council meeting. Ohlendorf Park was started in 1959 but enlarged in 1969 and 1974 to its present 11.5 acres by St. Louis businessman Howard Ohlendorf. It is located at Spring Drive and Union Road adjacent to I-55. Mathilda-Welmering Park is a 6.5-acre playground purchased in 1960 and named for the adjacent intersection of Mathilda Avenue and Welmering Drive.

By contrast, the area has eight cemeteries totaling over 600 acres, preserving natural features of scenic interest and, in some cases, notable architecture. All are described in more detail in this inventory. The oldest is New Mount Sinai Cemetery at 8430 Gravois Road, which traces its origins to the 1840s. It has 75 acres. The St. Lucas Cemetery, on Denny Road near Lindbergh, was founded in 1880 and included the former Park Hill Cemetery founded in 1891. Together, they have 27.5 acres. New St. Marcus Cemetery, on the banks of the River Des Peres at Gravois Road, was founded about 1897 and now has 98.5 acres.

Three cemeteries are located on Mackenzie Road. Our Redeemer was founded in 1916 and has 23.12 acres, Lakewood Park Cemetery was started in 1920 and has 45.4 acres. Both these cemeteries have lost acreage to suburban development. Resurrection Cemetery recently sold its portion north of Watson Road, but it is still the largest, at 192.85 acres. It is also the most recent, founded in 1928. Sunset Memorial Park on Gravois was founded in 1921 and has 107.3 acres. St. Paul Churchyard on Rock Hill Road dates from 1925 and has 45.60 acres.

The largest single open space in the area is Grant's Farm, the estate of the Busch family. It has many buildings, including three historic ones, but its 214 acres are predominantly open to pasture for the collection of unusual animals. The long frontage of Grant's Farm on Gravois Road, combined with the nearby frontage of Sunset Burial Park on the opposite side of the street, combine to create a green corridor in the heart of the survey area.

Gravois Road is the principal street through the area and the most historic, extending into Jefferson County on the west and to within a few blocks of downtown St. Louis on the east. It was one of a group of roads that were graveled as early as the 1850s. Tesson Ferry Road was the most important road to the south. Watson Road parallels Gravois at the north edge of the survey area. It was known as a winding road until it was straightened in the early 1930s to serve as the new U. S. Route 66, and portions of the old right-of-way survive in Webster Groves and Sunset Hills. Denny Road today runs only from Sappington Road west to Lindbergh, but in the nineteenth century it continued north to connect with Kirkwood's main street and on to the area that is now Ladue, where Samuel Denny had his farm. It lost its identity in the 1920s when Lindbergh Boulevard was created. Sappington Barracks Road was another historic road that gave up most of its identity at that time. Originally the road that ran from Sappington Road to Jefferson Barracks, today it exists only in a tiny portion at the southeast corner of this survey area and in a longer stretch in the Lemay area.

St. Louis County is notorious for streets that change names or directions, and this survey area is full of them. Pardee Road, a narrow, winding road along the north edge of Grant's Farm, makes a sharp left at its west end to terminate at Gravois; if you go straight at that turn, the road becomes Eddie & Park, named for two neighboring farmers (compare Lucas & Hunt in Normandy). At its east end, Pardee imperceptibly becomes Rock Hill Road. Rock Hill actually has a spur that connects north to Watson Road, but beyond that, the following street is called Elm, while Rock Hill picks up several blocks to the west. Rock Hill Road extends south to Gravois Road, but on the other side of that, it becomes Tesson Ferry Road, still the main connector to the rapidly developing South County area. Mackenzie Road, the main north-south artery of the eastern portion of the survey area, eventually dead-ends at a quarry, although maps show it going through to Green Park Road. The main line of traffic going south on Mackenzie finds itself turning left onto Reavis Barracks Road. Green Park Road (named for a farmer, Green Parke) becomes Musick Road on the west side of Tesson Ferry, while to the east, it terminates at Union Road to pick up again several blocks north. Weber Road, starting east at Laclede Station Road, breaks off at Gravois to begin again two blocks east, but as it crosses Morganford, it becomes Bayless Road. Westbound drivers wishing to turn northwest onto Heege must turn at Seibert. And so it goes.

In spite of this, the northern portion of the area has an unusually high number of right-angle intersections for the suburban portions of the county. This can be traced to the 1851 subdivision by Kenneth Mackenzie of the old Survey 1953 into large lots. In addition to Mackenzie Road, Mathilda, New Hampshire, Valcour, Laclede Station, Weber, and Heege trace their origins to that plan. These streets are all slightly northeast of true north, following the lines of the original Spanish survey. Farther west, Baptist Church and Sappington Roads follow the true north-south section lines on the east and west sides of Section 20. Mackenzie Road itself turns from the survey line to the section line as it crosses Gravois Road.

The development of the survey area has proceeded in waves, each of which has swamped but not necessarily eradicated the previous development. Thus, for instance, along Concord School Road and East Concord Road, recent suburban residential development has left a series of farmhouses standing on reduced lots. At 11420 Gravois Road, a commercial building has been wrapped around a farmhouse. The Marschel House at 9950 Canterleigh is the country house of a St. Louis businessman, preserved in the middle of a small subdivision. The most dramatic example of these survivals is the possibly ante-bellum house at 4839 Heidelberg, which remained when the farm around it was developed as early as 1905. The old Sappington log cabin stands in the back yard of the thirties house at 9538 Sappington Road.

Aside from Grant's Farm, the survey area did not attract the most fashionable or exclusive developments in this century. It grew up as a middle-class community, and the housing stock reflects that. The earliest subdivisions are at the east end of Gravois, where Lakewood was laid out on the old Benoist estate off Heege Road, and Hannover Heights and related subdivisions were laid out south of Gravois Road. The street of the latter are mostly named for German cities: Hamburg, Hanover (the English spelling), Oldenburg, Heidelberg, and Hildesheim. A second period of development began just before World War II with the Wilbur Terrace and Gravois Gardens developments just west of New Mount Sinai Cemetery. Farther west, other developments begun before the war were completed afterward with the newly fashionable ranch houses. Forest Haven is the premier example in the metropolitan area of this building type, but other developments, including Lakeshire, Mackenzie, and St. George reflect the same trend more vaguely. Post-war development is also reflected in the area's institutions; nearly all the schools were rebuilt, the Lindbergh Schools District and the Affton Fire District were created, and many of the churches were rebuilt or newly founded. The older centers of Affton and Sappington remained, but their retail base was eroded by the construction of Concord Village Shopping Center and other new developments along Lindbergh Boulevard, the new main street. Old commercial buildings have survived along Gravois Road principally because development has passed them by.

The survey area is unusual in being largely unincorporated but having six small municipal enclaves within it; the Village of Mackenzie is the smallest municipality in area in the county. All six were founded between 1937 and 1948 and focus in whole or part on characteristic subdivisions. An effort has been made in this survey to study at least one feature in each of these municipalities.

Afton, Sappington, and Concord were essentially farm hamlets, their businesses primarily serving neighboring farmers. As a suburb of St. Louis, the area was slower to develop. Perhaps the earliest surviving manifestation of that process is Oakland, the estate of Louis Benoist. The St. Louis banker hired George I. Barnett, perhaps the most prominent architect in Missouri at the time, to design his Italianate Villa in 1853. Now beautifully restored by the Afton Historical Society, it is listed on the National Register. It survived because it was converted into an office and chapel for Lakewood Cemetery in 1920. East of the cemetery, the Benoist estate had been subdivided in 1905 as Lakewood Subdivision. The developers, Willard Winner and James G. Hughes, hoped that a trolley line extending to Heege Road would make their lots attractive to St. Louisans. Hughes built his own house at 7753 Fleeta Street, but by 1915 or so, the financing for the development had collapsed.

McDermott and Hayden's Hannover Heights Addition was laid out at the same time as Lakewood. One of the developers, John Francis McDermott, was a descendant of Auguste Chouteau, a founder of St. Louis. "The Heights," as it was known, was the first of several small residential subdivisions extending through the twenties, most apparently successful, although the houses built there were for the most part small and nondescript. A few exceptions were houses built or improved by Croatian stonemasons, a colony of which apparently settled in this area. Three outstanding examples are 4935 Heege Road, 7920 Hildesheim, and 4701 Seibert. The last has a garden wall of so-called "honeycomb" stone, a brown aggregate stone weathered into rounded, gnarled, and concave shapes. Two other houses displaying this unusual stonework are 11637 and 11643 Denny Road in Sappington.

By the 1920s, the term "Gardenville" was being used as umbrella term for the Lakewood and Heights neighborhoods, and it was sometimes extended as far east on Gravois Road as the Kingshighway intersection in the city. The term probably relates to the truck gardens and nurseries that had formerly been in the area, and the term "Nursery" was also applied, especially to the area around the intersection of Gravois and Weber Roads, where the Weber Nursery was located. The crowning glory of this neighborhood was the construction of St. George's Catholic Church in 1927. A masterpiece of Italian Romanesque design by O'Meara and Hills, it literally crowned the highest point of the slope leading up from the River Des Peres, and the bend in the road makes it visible from a distance in both directions. It was joined in 1949 by the monumental German Romanesque Salem Lutheran Church, a block away. With the New Mount Sinai Cemetery, they form a small district of architecturally significant religious institutions.

More country estates like Oakland began to appear in the county after the turn of the century. The most celebrated took advantage of the county's many river views, but the largest and most baronial of all was created where the only natural feature was Gravois Creek: Grant's Farm, built for August Busch, Senior by his brewery architects in 1913. Busch anticipated other brewers and industrialists moving to the area, and he founded the Sunset Hills Country Club for them off Gravois Road. His son Adolphus built the large house, Grand View, there in 1916. Both are in Sunset Hills, just outside the present survey area. Christine Laumeier, sometimes called the Hetty Green of St. Louis, established an estate at the southwest corner of Sappington Road and Eddie & Park about this time. It burned in 1939, but the remaining acreage was recently bequeathed by her granddaughter to the Missouri Department of Conservation.

More typical of early twentieth-century housing in this area was the bungalow. Houses with full-width verandahs and Craftsman-influenced woodwork and decorative detailing were built both in new subdivisions and on rural pastures. Only a few of the most interesting could be included in the present survey. The Ossing family built one at 11448 Gravois on land they had owned since 1863, and another was built at 8960 Gravois on part of the Eliza Wise tract. A classic in design is the Shingle Style bungalow built in 1924 for William H. Hanewinkel at 8941 Valcour. It has recently been purchased by a development company and cannot have a long future. The Carl Strippgen House, a more austere design at 8757 New Hampshire Avenue, is still owned by the same family.

Watson Road's zigzag course was straightened in the early 1930s to accommodate U. S. Route 66, the celebrated highway from Chicago to Santa Monica. By the end of the decade, it began to be lined with motels and other businesses catering to the long-distance traveler. The most celebrated of these was the Coral Court Motel, now listed on the National Register but threatened with demolition for redevelopment. Several other contemporary motels survive in the area, including the Crystal, the Wayside, and the Casa Grande.

The Coral Court is also noteworthy as an example of Streamline Moderne, and several other good, if lesser, examples of the modernizing styles of the 1930s, often grouped together as Art Deco, were built in the area. New Deal financing contributed the Concord School, one of relatively few examples of the work of Murphy & Wischmeyer, a firm best known for their design of the Municipal Opera Loggia in Forest Park. The most striking Art Deco concentration is the Gravois Gardens subdivision at Gravois and Weber Roads, built on the site of the old Weber Nursery. Laid out in 1939, it was developed by Risch Building and Real Estate, with most of the houses designed by Gilbert Hansmann, the firm's self-trained staff architect. The Hansmann House at 9161 Vasek is the star here, but there are other interesting examples, including 9136 Coral and 9132 Flores. The style persisted after World War II, as seen in the little Dental Building at 11627 Gravois in Sappington and in the Affton Fire House at 9510 Gravois.

The use of neon for roadside display was related to the Art Deco taste, and one of the finest signs in this medium in the county is the Federhofer's Bakery sign at 9005 Gravois. Earlier is the Velvet Freeze Ice Cream Cone, originally located on Gravois at Weber but now moved to the grounds of the Mesnier School at Weber and Valcour.

The suburban development of the area was already underway before World War II. Wilbur Terrace, laid out in 1939 for Duenke Construction, managed to complete its almost surreally similar rows of cottages on Rosemary, Philo, and Kathleen Avenues before construction came to a halt in 1942, but Forest Haven, started in 1941, had to wait until after the war, when the popular residential type had shifted from bungalow and cottage to ranch house. The survey area has several notable concentrations of developer subdivisions, and several of them have been incorporated as municipalities, including Wilbur Terrace as Wilbur Park (1941), Forest Haven as Grantwood Village (1937), Mackenzie (1946), St. George (1948), and Lakeshire (1948). The most unusual mass-market house of the era was the Lustron House, a house made entirely of enameled steel. The Lustron house on Denny Road at Parklind Drive has been ruined by additions; only a small part of the green steel tile roof is now visible. The McDonald Lustron House on Pembroke is well preserved, however, and also has a matching garage.

Few examples of stylish or striking high style architecture have been built in this area since the war. This makes the former Mark Twain Theater at 4532 South Lindbergh Boulevard worth studying in greater detail.

HISTORY

The 1838 map of Township 44 North Range 6 East shows a patchwork of irregularly shaped Spanish land grants overlying the regular grid of square sections surveyed by the U. S. government. As was typical of the mostly French settlers under the Spanish colonial government, here the lands fronting on the rivers were claimed first. The southeastern part of the township was part of the commons of the town of Carondelet, founded in 1767 by Pierre Delor. Union Road and Morganford Roads mark the northwest boundary of this vast tract, and Interstate 55 also follows that line fairly closely.

The right bank (county side) of the River des Peres was claimed upstream from Carondelet by Gregoire Sarpy. At 6002 acres, the Sarpy tract was nearly ten times larger than the Spanish grants typically confirmed by the U. S. land commission after 1804 and larger even than Charles Gratiot's famous league square, now partly occupied by Forest Park. The whole southeastern part of the Sarpy tract was later acquired by Kenneth Mackenzie (not McKenzie or MacKenzie). He sold the part of it straddling Gravois Road at the River des Peres in 1846 to Hugh Brannan. The New St. Marcus Cemetery gives us a good idea of what that land looked like, while the house at 4839 Heidelberg Avenue may have been built by Brannan's daughters. Mackenzie subdivided the remainder of his land in 1850 as the Mackenzie Tract. The large rectangles he created then were aligned with the west edge of the property, now Laclede Station Road, and many of the other streets still follow that grid, including Valcour, New Hampshire, Mackenzie, Heege, and Weber.

Other lands were claimed at an early date along the Gravois and Mattis or Mattese Creeks. James Mackay, who for a time was acting governor under Zenon Trudeau, acquired Surveys 9 and 3066, on both sides of Gravois Road. He married Isabella, a daughter of John Long, a pioneer settler of the Chesterfield area. John Sappington, who came to Missouri in 1804 from Maryland, acquired the next Spanish survey to the north, originally granted to Pierre Didier. John Sappington's daughter Elizabeth married John Long's son William Lindsay Long, and the couple settled on Mackey's Survey 9. The house they started there was later acquired by Ulysses S. Grant and is now a National Historic Site, 7400 Grant Road. About 1820, the Longs built another house at 9385 Pardee Road (just outside the survey area), now owned by the St. Louis County Parks Department and listed in the National Register of Historic Places.

John Sappington had seventeen children, and their descendants in the St. Louis area are legion. The brick house built by his second son, Thomas, is now a house museum at 1015 South Sappington Road in Crestwood. The home of the eldest son, Zephaniah, stood until recently at 11145 Gravois Road, but although listed in the National Register, it has been dismantled for possible reconstruction in St. Charles County. Joseph Sappington, possibly the brother or cousin of John, probably built the house still standing at 10734 Clearwater Drive; it, too, is listed in the National Register. Two other Sappington houses are included in this inventory. The house at 11038 Gravois Road was apparently built by Zephaniah Sappington's grandson, William H. Sappington. The log cabin at 9538 Sappington Road may have been built by a grandson of John Sappington, Jr. (1790-1864), Dr. Francis P. Sappington.

John Long's other daughter, Nancy, married Eli Musick. He was the nephew of Thomas Musick, who had established the Fee Fee Baptist church near Bridgeton as early as 1808, one of the first protestant churches in Missouri. Eli Musick's lands, commemorated in Musick Road, were sold in 1832 to William Musick, who may have been his son or brother, and the house at 10103 Musick Road was probably built by William's daughter Lavinia Wetherell.

Eli and Nancy Musick, along with David Fine and Judge Joseph Sale, founded a baptist church in this area in 1809. The 1870 atlas shows it located on a one-acre lot at the southeast corner of Baptist Church Road and Sappington Barracks Road (now Lindbergh Boulevard). As late as 1937, the building was supposed to be standing, remodeled as a house, and a cemetery was said to survive in the churchyard. All this is now gone. Concord, the name of the church, has been adopted by this southern portion of T44R6, perpetuated in the Concord School, the Concord Farmers Club, Concord School Road, and more recently Concord Township, Concord Plaza, and Concord Village. The 1994 telephone directory lists Concord Village as a municipality, but in fact it remains an unincorporated part of the county.

Other land grants were situated along Mattis Creek. Most of Baptiste Riviere's Survey 3112 was acquired by Frederick Saugrain, and he made a subdivision of the north part of it about 1860. At least four of the houses built by Saugrain's purchasers survive: 10208, 10408, and 10448 Concord School Road and 10068 Sappington Road. David Fine's Survey 1988 was acquired in part by Col Philip Pipkin in 1836. The house at 12018 Southwick dates from that time. A later house built on part of Pipkin's estate is 9870 East Concord Road.

Other early farmhouses deserve mention here. "Hardscrabble," the log house built by Ulysses S. Grant in 1856 on part of his father-in-law's White Haven estate, has been moved three times and was totally rebuilt in 1979, but it remains significant in a national context as one of only two houses physically built by a future president. It is now located on the grounds of Grant's Farm, the August Busch estate at 10501 Gravois Road, about a mile south of its original location on Rock Hill Road. That site, now part of St. Paul Churchyard, remains significant for its archaeological potential.

The Otto Theiss House at 4922 Valley Crest Drive goes back to about 1850. The Theiss family was one of the important German farm families which began to take over the area from the ethnic English settlers beginning about that time. Another, less altered example from the era is the Herpel Log House at 10995 Kohrs Lane. It retains its smokehouse and summer kitchen.

The old house behind the brick offices at 11420 Gravois Road, here attributed to George Werner, appears to date from as early as 1860. It is the oldest remaining building of Sappington Village, which grew up at the crossroads of Gravois, Sappington, and Denny Roads after the middle of the century. The land had been part of the farms of George Sappington, Zephaniah's son, and Thomas Jefferson Sappington, John Junior's son. George began selling off his frontage on the south side of Gravois Road in 1857. Apparently he operated a blacksmith shop on the north side of the road, and the neighborhood was sometimes called Georgetown after him. By 1878, the crossroad was important enough to be included in Pitzman's county atlas. The founding in 1880 of St. Lucas Evangelical Church on Denny Road just west of here suggests the increased importance of the area. Other surviving buildings that can be associated with Sappington Village all date from after 1900, but several have their own interest. Frey Plumbing at 11570 Gravois seems to be the old home of Anna Keller, the widow of Jacob Keller, who had a general store where 11550 Gravois is now located. August Singer's grocery store building at 11314 Gravois is one of very few surviving commercial buildings in St. Louis county to have a covered porch across the front, a style now more familiar from western movies. The building in front of the old Werner House is the former Seibert Restaurant, a landmark of the 1930s and the only survivor of several restaurant and tavern buildings in this area.

SAPPINGTON & P.O.

T. 44 N. R. 6 E.

Scale 100 feet to one inch

100 200 300 400 500 600 700 800 900 1000 feet.

Ed. L. & Grendele
19.00 ac.

F. Bwidschuh
12.20 ac.

SEC. 19

BENNY OR KIRKWOOD & GEORGETOWN ROAD

4 Elizabeth S. & Wm. H. Mauro
3 Jacob Wohlschlaeger
2 Jacob Wohlschlaeger
1 Jacob Wohlschlaeger
1.30 ac.

SAPPINGTON
Mauro's Sub.
to Georgetown

Bl. S. & Wm. H. Mauro

SAPPINGTON ROAD

Sappington Hotel

Jacob Wohlschlaeger
Store & P.O.
0.22 ac.
A. Versch

Eddie Bros.
4 ac.

Christian Werners Est.
2.65 ac.

Gerhard Ossing
2.35 ac.

Ph. Werner
4.33 ac.

H. Poth
1 ac.

60 W.

Peter Seim 500 ac.

H. F. Steinhauer

Thos. J. Sappington

SEC. 20

Thomas J. Sappington

Res.

The old village of Affton, by contrast, was slower to become an identifiable place. It is not mentioned in Scharff's 1883 history, and the 1909 atlas does not include a separate detail for it, but by 1911 William L. Thomas's history gives it a separate heading. "Affton sprang into existence and a name shortly before the Separation," that is, the separation of St. Louis City from St. Louis County, which was in 1876. Thomas credits its creation to Judge C. D. Wolff, whose family farm later became the site of Lakeshire. Wolff was able to establish a post office there. "It got the name from John George Aff [Johan Georg Aff], its old-time, worthy and efficient postmaster." According to Aff's biography elsewhere in Thomas's work, Aff was born in Germany in 1834 and came to St. Louis in 1858. He started a grocery and liquor business on Cherokee Street in 1867 and moved to Affton five years later, or 1872, where he continued in the same line. Aff is not named in the 1878 atlas, but his store may have been the one shown at the southwest corner of Gravois and Tesson Ferry Road. Aff remained resident in the settlement named for him only until 1882, when he bought a farm on south Sappington Road. He bought a second farm on Tesson Ferry Road in 1894, and his house there may be the one at 9870 East Concord Road. He retired in 1902 to Francis Sappington's old property at 9538 Sappington Road, and although that house has been replaced, several of the outbuildings may date from his time there. He died in 1913.

Exactly where Affton is remains a question. Today, many people associate it with the 63123 zip code area, which is about two-thirds the size of the present survey area. It is five sided, bounded on the northwest by Watson Road, on the northeast by the city limits of St. Louis, on the southeast by I-55, on the south by Lindbergh Boulevard, and on the west by Baptist Church Road and Pardee Road. The boundaries of the Affton School District, are smaller, but still large, incorporating much of the City of Shrewsbury. The old Affton, however, was probably closer in people's minds to the old McKenzie rural school district, centering on the McKenzie School at Weber and Mackenzie Roads just north of Gravois. As a business district, Affton probably ran along Gravois Road roughly from Mackenzie to Tesson Ferry and Rock Hill. This stretch of Gravois was bisected by a railroad line, today owned by the Burlington Northern. Originally at grade, it was later provided with a highway underpass. That improved traffic but cut off some of the businesses nearest it. Two surviving commercial buildings from that era are the Schneeberger Merchandise Store at 9821-25 Gravois and Clabes Hardware at 9900 Gravois; both are illustrated in the 1920 history of the county.

Probably the first church organized in Affton was Christ Episcopal, which had a frame building at the southwest corner of New Hampshire and Aliceton. That site is now Eden Park, created by the adjacent Eden Evangelical Church (now United Church of Christ), founded in 1912 and located at 8930 Eden Avenue. The land for the church was purchased from Mary Berry, who had laid out the residential subdivision of Affton Heights in 1905. The subdivision was featured in the 1909 county atlas with no houses on it, although probably several had already been begun. The map shows that Aliceton was originally called Alabama, while Bonnie was Berry. The other Berry Road, which runs south through Glendale and Oakland, is named for the same family. Mary Berry was a member of the Warmbrodt family and the widow of Joseph Thomas Berry (1845-1886), who had acquired this land in 1884. He was a grandson of William Lindsay Long. The house at 6719 Bonnie may have been built by him about 1885.

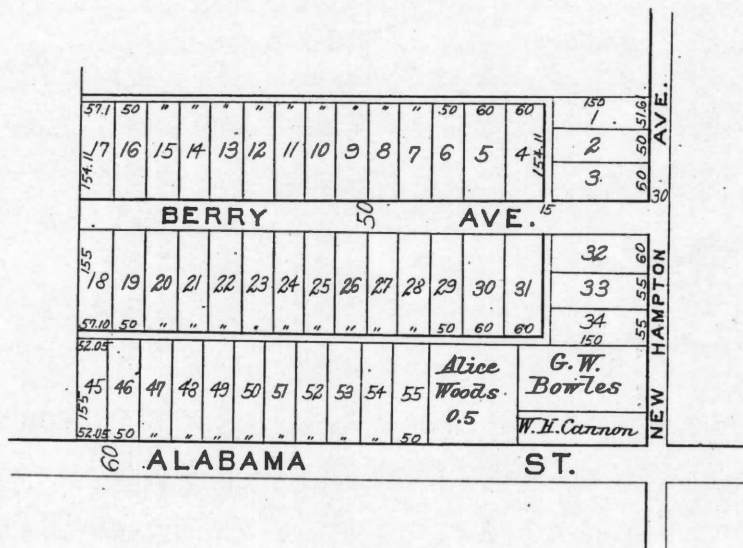
Even older in Affton is the Uriah Wise (not Weiss) House at 9850 Gravois Road. It has sometimes been dated as early as 1840, but the land was not inherited by Wise's wife, the former Eliza Jane Grate, until 1852. It never actually belonged to Uriah Wise, although he probably built it about 1859. In her will, Eliza provided for the subdivision of her property among her six children, and the part with the homestead went to the eldest daughter, Agatha Lillie, who married Charles Herzog. The next plot to the east went to Agnes Jemima, the wife of George B. Bowles. Their house is still standing, too, but in poor condition.

AFFTON HEIGHTS

MACKENZIE TRACT SURVEY 1953

IN GARONDELET TWP. 44-6

Scale 300 feet to one inch.



RECOMMENDATIONS

While this inventory was being conducted, the Old Bayless School at 4520 Weber Road was demolished. During the same time, the McKenzie School, one of the finest of the remaining rural schools, was subjected to vinyl siding over its rich Colonial Revival cornices. Photos taken five years ago demonstrate that the Art Deco Doctor's Building at 11521 Gravois Road has had its striking circular glass block windows replaced by conventional rectangular ones. The Zephaniah Sappington House, a National Register property and one of the oldest houses in the county, was dismantled and moved to St. Charles County, where it may or may not be reconstructed. These are a few of the reasons why St. Louis County needs to take advantage of the law enacted by the state legislature in 1991 to enable counties to establish historic preservation commissions with real regulatory powers. The St. Louis County Historic Buildings Commission, first established in 1957, would be the logical vehicle for such authority.

What would the Historic Buildings Commission protect if it could? Certainly all the remaining National Register properties, listed in an earlier section of this report. Other properties that would be eligible for listing in the National Register would certainly include Grant's Farm, with its mansion, Bauernhof, and Hardscrabble log cabin (listed as a feature of the 1913 ensemble, if for no other reason). Probably the original site of Hardscrabble in St. Paul Churchyard is eligible for listing as an archaeological site. New Mount Sinai Cemetery would be eligible for its architectural features, particularly its Art Deco gates, and for its importance in reflecting the place of Reform Judaism in the ethnic diversity of Missouri. The Clabes Hardware building at 9900 Gravois is unique in St. Louis County for its pressed metal facade, a type more common in other parts of the state. St. George's Church is eligible for the quality of its architecture, and the Concord School is probably eligible for that reason and as an example of public construction stimulated by the New Deal. The whole Gravois Gardens subdivision would probably be eligible as a middle-class developer's manifestation of the Art Deco movement. The Velvet Freeze Ice Cream Cone is more than fifty years old and retains its significance as an icon of roadside America even if it has been moved.

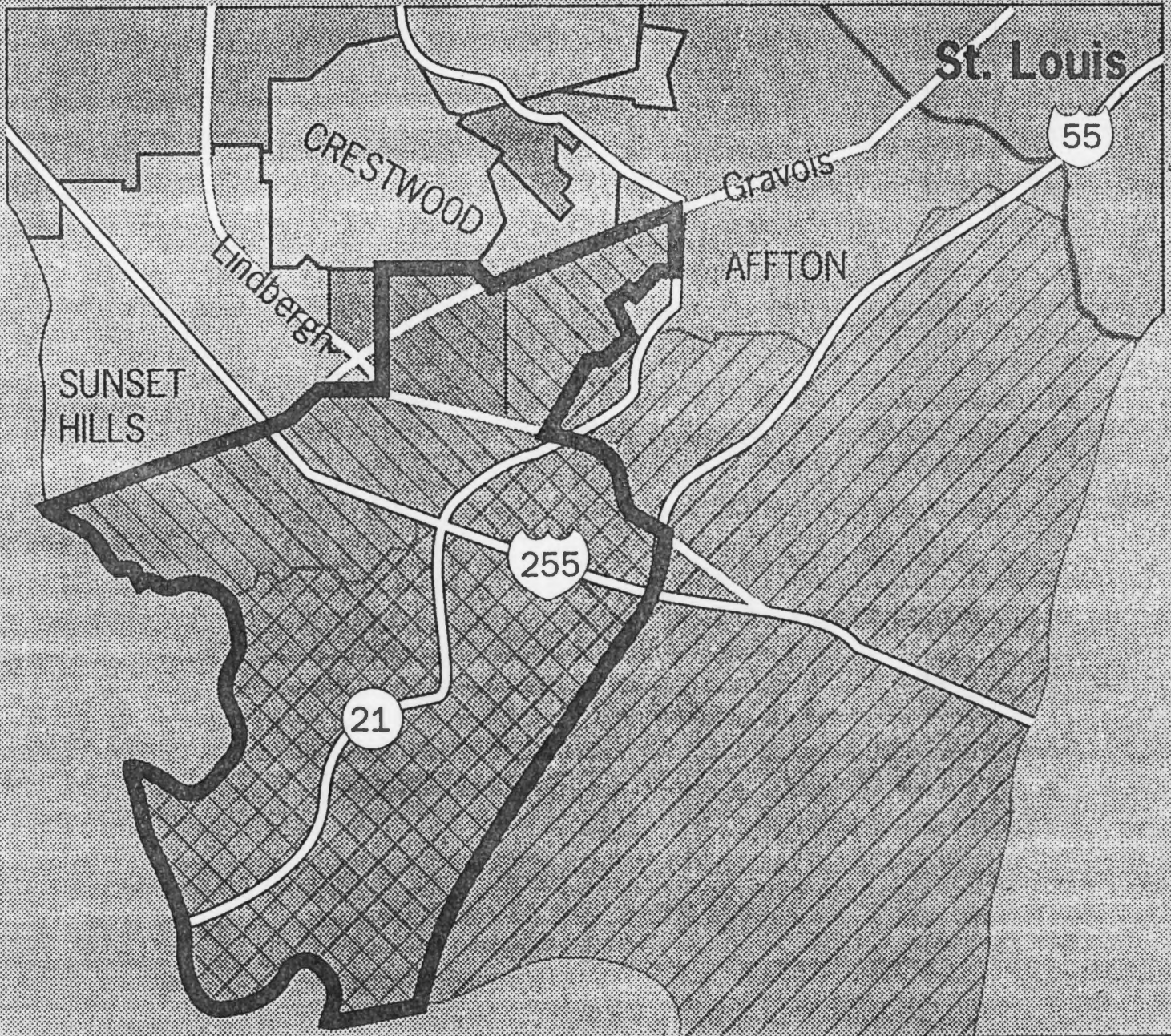
Many other properties are important to the history of the county and the survey area even if they may not quite measure up to National Register standards. Among farm houses, the Brannan-Horst House at 4839 Heidelberg, the Herpel House at 10995 Kohrs Lane, and the Francis Sappington cabin at 9538 Sappington Road stand out for their age and degree of preservation. The Pipkin House at 12018 Southwick, although altered, is also important because of its age and the regard in which its builder, Col. Philip Pipkin, has been held for over a century. Similarly, the Uriah Wise House at 9850 Gravois Road has long been considered a local landmark; it was already being called an old house in 1899. The Schneeberger Store in old Affton and the Singer Grocery in old Sappington are both respectable and relatively unaltered commercial buildings; Singer's is probably unique in the county for its front porch. All three Evangelical churches have certain distinctions, but St. John's is especially important for its important social role in its part of the county, overlapping with the Mehlville School District.

Among twentieth-century buildings, the beautiful Marschel House at 9950 Canterleigh Drive is worthy of note as a period-style house that seems to have escaped from Clayton or Ladue. The little Meyer Dental Building is a gem of Streamline Moderne and subject to the same kinds of insensitive alterations that ruined the nearby Doctor's Building. The former Gardenville area deserves more study for its association with the community of Croatian stonemasons, and possibly more examples of their distinctive and high-quality workmanship can be found. Finally, the Federhofer's Bakery sign, while not a match for the Airway Drive-In sign on St. Charles Rock Road, nevertheless is one of the finest examples of neon in the county and should be saved.

The survey area is blessed with two active historical societies, the Affton Historical Society and the Sappington-Concord Historical Society. They should be encouraged to continue (and correct) the research begun here.

Talk of incorporation of all or part of the survey area has been heard for several years now, but many were surprised by the proposal that has recently become public to incorporate Sappington and Concord as far south as the Meramec River (including the area inventoried in 1989 as Mattese to Sunset Hills). This proposal would leave most of Affton unincorporated. A second proposal would incorporate the Lemay and Mehlville areas to the east, but would overlap partly into the survey area and substantially into the Mattese area south of I-270 (called I-255 on the accompanying map). Add to these conflicts the plans of both Sunset Hills and Crestwood to annex parts of the survey area, and its future looks very uncertain. Annexation or new incorporations will, however, create additional opportunities for the passage of historic preservation ordinances that have a realistic chance of preserving the heritage identified here.

Sappington-Concord Area



AFFTON SURVEY BY ADDRESS

| | |
|------------------------------------|--------------------------------------|
| 6703 Aliceton corner New Hampshire | William H. Cannon House |
| 6731 Aliceton Avenue | Ollie T. Woods House |
| 6719 Bonnie at Bonnie Terrace | Joseph T. Berry House |
| 9950 Canterleigh Drive | C. Albert Marschel House |
| 9870 East Concord Road | Aff-Gebhardt House |
| 10040 Concord School Road | Concord Farmers Club |
| 10208 Concord School Road | Peter Dietrich House |
| 10305 Concord School Road | Concord School |
| 10408 Concord School Road | Henry Wauge House |
| 10448 Concord School Road | Christoph Heim House |
| 9136 Coral Drive | Julia Fischer House |
| 11637 Denny Road | Frank Swantner House |
| 11643 Denny Road | Walter Werkmeister House |
| *11735 Denny Road | St. Lucas Evangelical Church |
| 11735 Denny Road | St. Lucas & Park Hill Cemeteries |
| *11835 Denny Road | old Sappington Congregational Church |
| *8930 Eden Avenue | Eden Evangelical Church |
| 7734 Fleta Street | Frank A. Hartung House |
| 7753 Fleta Street | James G. Hughes House |
| 7901 Fleta Street | Lakewood Hall |
| 9132 Flores at Lucia | William Zimmer House |
| 11234 Flori Drive | Philip J. Crecelius House |
| 7810 Gravois Road | Stanze-Thomas Monument Company |
| 7820 Gravois at Heidelberg | August Stanze House |
| 7901 Gravois Road | New St. Marcus Cemetery |
| 7901 Gravois Road | New St. Marcus Cemetery, office |
| 8120-22 Gravois Road | Albert Walck Building |
| 8126-28 Gravois Road | Roy Investment Building |
| 8327 Gravois Road | Salem Lutheran Church |
| 8430 Gravois Road | New Mount Sinai Cemetery |
| *8430 Gravois Road | New Gates, New Mount Sinai Cemetery |
| 9005 Gravois Road | Federhofer's Bakery sign |
| 9510 Gravois Road | Affton Fire District |
| 9821-25 Gravois Road | Schneeberger Merchandise Store |
| 9834 Gravois Road | Agnes Bowles House |
| 9850 Gravois Road | Uriah Wise House |
| 9860 Gravois Road | Wohlschlaeger House |
| 9900 Gravois Road | Clabes Hardware |
| 9902 Gravois Road | Mehl House |
| 10180 Gravois Road | Sunset Memorial Park, gates |
| 10180 Gravois Road | Sunset Memorial Park, clock tower |
| 10501 Gravois Road | Grant's Farm |
| " | Bauernhof |
| " | Hardscrabble |
| *11011 Gravois at Eddie & Park | Sappington School #49 |
| 11038 Gravois Road | William H. Sappington House |
| 11314 Gravois Road | Haag-Singer Building |
| 11420 Gravois Road, front | Seibert Restaurant |
| 11420 Gravois Road, rear | George Philipp Werner House |
| 11448 Gravois Road | Ossing House |
| 11521 Gravois Road | Doctor's Building |
| 11550 Gravois Road | old Frey Brothers Hardware |
| 11570 Gravois Road | Anna Keller House |
| 11627 Gravois Road | Meyer Dental Building |

AFFTON SURVEY BY ADDRESS
PAGE TWO

4533 Green Park Road
9716 Green Park Road
4935 Heege Road
4980 Heege Road
5032 Heege Road
*5100 Heege Road
5306 Heege Road
5401 Heege Road
4839 Heidelberg Avenue
5200 Hilda Avenue
7920 Hildesheim Avenue
Holly Hills Avenue
Huntingdon Drive
10995 Kohrs Lane
*1114 Laclede Station Road
*1118 Laclede Station Road
Laclede Station at Rock Hill
10763 Lavinia Drive
4532 South Lindbergh Blvd.
4900 South Lindbergh Blvd.
Lucia at Gravois
6901 Mackenzie Road
7800 Mackenzie Road
8001 Mackenzie Road
8480 Mackenzie Road
8520 Mackenzie Road
8521 Mackenzie Road
*8701 Mackenzie Road
8721 Mackenzie Road
10103 Musick Road
8757 New Hampshire Avenue
8761 New Hampshire Avenue
8765 New Hampshire at Bonnie
8803 New Hampshire Avenue
8807 New Hampshire Avenue
8811 New Hampshire Avenue
8815 Pardee Road, at Rock Hill
1166 Pembroke at Wimbledon
4840 Reavis Barracks Road
7725 S. Rock Hill Road
[REDACTED]
Rosemary, Philo, & Kathleen Aves.
*11333 St. John's Church Road
9148 Sappington Road
9227 Sappington Road
9538 Sappington Road
9538 Sappington Road, rear
10068 Sappington Road

Theobald Guth House
John Mueller House
Frank Tonkovic House
St. George's Catholic Church
Ernest Hoge house
Old Ward I School
Harrison-Proehl House
Charles F. Browne House
Brannan-Horst House
Gardenville Community Church
Matt Tomich House
Village of Mackenzie
St. George Subdivision
Herpel House
Edward E. Pounds House
Joseph D. Keller House
Forest Haven pylons
Theiss-Hogenmiller House
Mark Twain Theater
St. Louis State Historical Marker
Gravois Gardens Subdivision
Resurrection Cemetery
Lakewood Park Cemetery
Heege School
Our Redeemer Cemetery
old Affton Senior High School
Thomas K. Darlow House
McKenzie School #47
Cornerstone Church
Wetherell- Theiss House
Carl Strippgen House
Detjen-Strippgen House
George Perrot House
Charles Werner House
William Werner House
Adolph Roy House
Christine Matt house & barn
McDonald Lustron House
Hesch Farm
St. Paul Churchyard
[REDACTED]
Wilbur Terrace
St. John's Evangelical Church
Ross Wagner Farm
Elizabeth Gempp Estate
Samuel Livingston House
Dr. Francis Sappington cabin
Tautphaeus House

AFFTON SURVEY BY ADDRESS
PAGE THREE

4701 Seibert at Hildesheim
12018 Southwick Drive
10245 Spokane Drive
Stonell at Tesson Ferry
8909 Valcour Avenue
8941 Valcour Avenue
4922 Valley Crest Drive
9161 Vasel at Lucia
*7746 Watson Road
7800 Watson Road
8208 Watson Road
*4520 Weber Road
4530 Weber Road
6930 Weber Road

Albert H. Weber House
Pipkin House
Stuenkel Farm
Lakeshire pylons
Bertha Toeneboehm House
William H. Hanewinkel House
Otto Theiss House
Gilbert Hansmann House
Crystal Motel
Wayside Motel
La Casa Grande Motel
Old Bayless School (demolished)
Old Bayless High School
Velvet Freeze Ice Cream Cone

7190G

**AFFTON SURVEY
BY MUNICIPALITY AND TOWNSHIP**

TOWN OF GRANTWOOD VILLAGE

| | |
|------------------------------|---------------------|
| 10501 Gravois Road | Grant's Farm |
| " | Bauernhof |
| " | Hardscrabble |
| Laclede Station at Rock Hill | Forest Haven pylons |

CITY OF LAKESHIRE

| | |
|-------------------------|------------------|
| Stonell at Tesson Ferry | Lakeshire pylons |
|-------------------------|------------------|

VILLAGE OF MACKENZIE

| | |
|--------------------|----------------------|
| Holly Hills Avenue | Village of Mackenzie |
|--------------------|----------------------|

VILLAGE OF MARLBOROUGH

| | |
|----------------------------|------------------------|
| *1114 Laclede Station Road | Edward E. Pounds House |
| *1118 Laclede Station Road | Joseph D. Keller House |
| 1166 Pembroke at Wimbledon | McDonald Lustron House |
| *7746 Watson Road | Crystal Motel |
| 7800 Watson Road | Wayside Motel |
| 8208 Watson Road | La Casa Grande Motel |

CITY OF ST. GEORGE

| | |
|------------------|------------------------|
| Huntingdon Drive | St. George Subdivision |
|------------------|------------------------|

VILLAGE OF WILBUR PARK

| | |
|-----------------------------------|----------------|
| Rosemary, Philo, & Kathleen Aves. | Wilbur Terrace |
|-----------------------------------|----------------|

CONCORD TOWNSHIP

| | |
|----------------------------|-------------------------------------|
| 9950 Canterleigh Drive | C. Albert Marschel House |
| 9870 East Concord Road | Aff-Gebhardt House |
| 10040 Concord School Road | Concord Farmers Club |
| 10208 Concord School Road | Peter Dietrich House |
| 10305 Concord School Road | Concord School |
| 10408 Concord School Road | Henry Wauge House |
| 10448 Concord School Road | Christoph Heim House |
| 9136 Coral Drive | Julia Fischer House |
| 9132 Flores at Lucia | William Zimmer House |
| 11234 Flori Drive | Philip J. Crecelius House |
| 7810 Gravois Road | Stanze-Thomas Monument Company |
| 7820 Gravois at Heidelberg | August Stanze House |
| 8120-22 Gravois Road | Albert Walck Building |
| 8126-28 Gravois Road | Roy Investment Building |
| 8430 Gravois Road | New Mount Sinai Cemetery |
| *8430 Gravois Road | New Gates, New Mount Sinai Cemetery |

**AFFTON SURVEY
BY MUNICIPALITY AND TOWNSHIP
Page Two**

9510 Gravois Road
9834 Gravois Road
9850 Gravois Road
9860 Gravois Road
9900 Gravois Road
9902 Gravois Road
10180 Gravois Road
10180 Gravois Road
11038 Gravois Road
11314 Gravois Road
11420 Gravois Road, front
11420 Gravois Road, rear
11448 Gravois Road
11550 Gravois Road
11570 Gravois Road
4533 Green Park Road
9716 Green Park Road
4935 Heege Road
4980 Heege Road
4839 Heidelberg Avenue
7920 Hildesheim Avenue
10995 Kohrs Lane
10763 Lavinia Drive
4532 South Lindbergh Blvd.
4900 South Lindbergh Blvd.
Lucia at Gravois
10103 Musick Road
4840 Reavis Barracks Road
*11333 St. John's Church Road
9538 Sappington Road
9538 Sappington Road, rear
10068 Sappington Road
4701 Seibert at Hildesheim
12018 Southwick Drive
10245 Spokane Drive
4922 Valley Crest Drive
9161 Vasel at Lucia
*4520 Weber Road
4530 Weber Road

Affton Fire District
Agnes Bowles House
Uriah Wise House
Wohlschlaeger House
Clabes Hardware
Mehl House
Sunset Memorial Park, gates
Sunset Memorial Park, clock tower
William H. Sappington House
Haag-Singer Building
Seibert Restaurant
George Philipp Werner House
Ossing House
old Frey Brothers Hardware
Anna Keller House
Theobald Guth House
John Mueller House
Frank Tonkovic House
St. George's Catholic Church
Brannan-Horst House
Matt Tomich House
Herpel House
Theiss-Hogenmiller House
Mark Twain Theater
St. Louis State Historical Marker
Gravois Gardens Subdivision
Wetherell- Theiss House
Hesch Farm
St. John's Evangelical Church
Samuel Livingston House
Dr. Francis Sappington cabin
Tautphaeus House
Albert H. Weber House
Pipkin House
Stuenkel Farm
Otto Theiss House
Gilbert Hansmann House
Old Bayless School (demolished)
Old Bayless High School

AFFTON SURVEY
BY MUNICIPALITY AND TOWNSHIP
Page Three

GRAVOIS TOWNSHIP

6703 Aliceton corner New Hampshire
6731 Aliceton Avenue
6719 Bonnie at Bonnie Terrace
11637 Denny Road
11643 Denny Road
*11735 Denny Road
11735 Denny Road
*11835 Denny Road
*8930 Eden Avenue
7734 Fleta Street
7753 Fleta Street
7901 Fleta Street
7901 Gravois Road
7901 Gravois Road
8327 Gravois Road
9005 Gravois Road
9821-25 Gravois Road
*11011 Gravois at Eddie & Park
11521 Gravois Road
11627 Gravois Road
5032 Heege Road
*5100 Heege Road
5306 Heege Road
5401 Heege Road
5200 Hilda Avenue
6901 Mackenzie Road
7800 Mackenzie Road
8001 Mackenzie Road
8480 Mackenzie Road
8520 Mackenzie Road
8521 Mackenzie Road
*8701 Mackenzie Road
8721 Mackenzie Road
8757 New Hampshire Avenue
8761 New Hampshire Avenue
8765 New Hampshire at Bonnie
8803 New Hampshire Avenue
8807 New Hampshire Avenue
8811 New Hampshire Avenue
8815 Pardee Road, at Rock Hill
7725 S. Rock Hill Road
[REDACTED]
9148 Sappington Road
9227 Sappington Road
8909 Valcour Avenue
8941 Valcour Avenue
6930 Weber Road

William H. Cannon House
Ollie T. Woods House
Joseph T. Berry House
Frank Swantner House
Walter Werkmeister House
St. Lucas Evangelical Church
St. Lucas & Park Hill Cemeteries
old Sappington Congregational Church
Eden Evangelical Church
Frank A. Hartung House
James G. Hughes House
Lakewood Hall
New St. Marcus Cemetery
New St. Marcus Cemetery, office
Salem Lutheran Church
Federhofer's Bakery sign
Schneeberger Merchandise Store
Sappington School #49
Doctor's Building
Meyer Dental Building
Ernest Hoge house
Old Ward I School
Harrison-Proehl House
Charles F. Browne House
Gardenville Community Church
Resurrection Cemetery
Lakewood Park Cemetery
Heege School
Our Redeemer Cemetery
old Affton Senior High School
Thomas K. Darlow House
McKenzie School #47
Cornerstone Church
Carl Strippgen House
Detjen-Strippgen House
George Perrot House
Charles Werner House
William Werner House
Adolph Roy House
Christine Matt house & barn
St. Paul Churchyard
[REDACTED]
Ross Wagner Farm
Elizabeth Gempp Estate
Bertha Toeneboehm House
William H. Hanewinkel House
Velvet Freeze Ice Cream Cone

AFFTON SURVEY
BY SCHOOL DISTRICT

AFFTON SCHOOL DISTRICT

6703 Aliceton corner New Hampshire
6731 Aliceton Avenue
6719 Bonnie at Bonnie Terrace
9950 Canterleigh Drive
9136 Coral Drive
*8930 Eden Avenue
7734 Fleta Street
7753 Fleta Street
7901 Fleta Street
9132 Flores at Lucia
9005 Gravois Road
9510 Gravois Road
9821-25 Gravois Road
9834 Gravois Road
9850 Gravois Road
9860 Gravois Road
9900 Gravois Road
9902 Gravois Road
5401 Heege Road
Holly Hills Avenue
Huntingdon Drive
*1114 Laclede Station Road
*1118 Laclede Station Road
Lucia at Gravois
6901 Mackenzie Road
7800 Mackenzie Road
8001 Mackenzie Road
8480 Mackenzie Road
8520 Mackenzie Road
8521 Mackenzie Road
*8701 Mackenzie Road
8721 Mackenzie Road
8757 New Hampshire Avenue
8761 New Hampshire Avenue
8765 New Hampshire at Bonnie
8803 New Hampshire Avenue
8807 New Hampshire Avenue
8811 New Hampshire Avenue
8815 Pardee Road, at Rock Hill
1166 Pembroke at Wimbledon
7600 S. Rock Hill Road
[REDACTED]
Stonell at Tesson Ferry
8909 Valcour Avenue
8941 Valcour Avenue
9161 Vasel at Lucia
*7746 Watson Road
7800 Watson Road
8208 Watson Road
6930 Weber Road

William H. Cannon House
Ollie T. Woods House
Joseph T. Berry House
C. Albert Marschel House
Julia Fischer House
Eden Evangelical Church
Frank A. Hartung House
James G. Hughes House
Lakewood Hall
William Zimmer House
Federhofer's Bakery sign
Affton Fire District
Schneeberger Merchandise Store
Agnes Bowles House
Uriah Wise House
Wohlschlaeger House
Clabes Hardware
Mehl House
Charles F. Browne House
Village of Mackenzie
St. George Subdivision
Edward E. Pounds House
Joseph D. Keller House
Gravois Gardens Subdivision
Resurrection Cemetery
Lakewood Park Cemetery
Heege School
Our Redeemer Cemetery
old Affton Senior High School
Thomas K. Darlow House
McKenzie School #47
Cornerstone Church
Carl Strippgen House
Detjen-Strippgen House
George Perrot House
Charles Werner House
William Werner House
Adolph Roy House
Christine Matt house & barn
McDonald Lustron House
St. Paul Churchyard
[REDACTED]
Lakeshire pylons
Bertha Toeneboehm House
William H. Hanewinkel House
Gilbert Hansmann House
Crystal Motel
Wayside Motel
La Casa Grande Motel
Velvet Freeze Ice Cream Cone

BAYLESS SCHOOL DISTRICT

| | |
|----------------------------------|-------------------------------------|
| 7810 Gravois Road | Stanze-Thomas Monument Company |
| 7820 Gravois at Heidelberg | August Stanze House |
| 7901 Gravois Road | New St. Marcus Cemetery |
| 7901 Gravois Road | New St. Marcus Cemetery, office |
| 8120-22 Gravois Road | Albert Walck Building |
| 8126-28 Gravois Road | Roy Investment Building |
| 8327 Gravois Road | Salem Lutheran Church |
| 8430 Gravois Road | New Mount Sinai Cemetery |
| *8430 Gravois Road | New Gates, New Mount Sinai Cemetery |
| 4935 Heege Road | Frank Tonkovic House |
| 4980 Heege Road | St. George's Catholic Church |
| 5032 Heege Road | Ernest Hoge House |
| *5100 Heege Road | Old Ward I School |
| 5306 Heege Road | Harrison-Proehl House |
| 4839 Heidelberg | Brannan-Horst House |
| 5200 Hilda Avenue | Gardenville Community Church |
| 7920 Hildesheim Avenue | Matt Tomich House |
| Rosemary, Philo & Kathleen Aves. | Wilbur Terrace |
| 4701 Seibert at Hildesheim | Albert H. Weber House |
| *4520 Weber Road | Old Bayless School (demolished) |
| 4530 Weber Road | Old Bayless High School |

LINDBERGH SCHOOL DISTRICT

| | |
|--------------------------------|--------------------------------------|
| 9870 East Concord Road | Aff-Gebhardt House |
| 10040 Concord School Road | Concord Farmers Club |
| 10208 Concord School Road | Peter Dietrich House |
| 10305 Concord School Road | Old Concord School |
| 10408 Concord School Road | Henry Wauge House |
| 10448 Concord School Road | Christoph Heim House |
| 11637 Denny Road | Frank Swantner House |
| 11643 Denny Road | Walter Werkmeister House |
| *11735 Denny Road | St. Lucas Evangelical Church |
| 11735 Denny Road | St. Lucas & Park Hill Cemeteries |
| *11835 Denny Road | old Sappington Congregational Church |
| 10180 Gravois Road | Sunset Memorial Park, gates |
| 10180 Gravois Road | Sunset Memorial Park, clock tower |
| 10501 Gravois Road | Grant's Farm |
| " | Bauernhof |
| " | Hardscrabble |
| *11011 Gravois at Eddie & Park | Sappington School #49 |
| 11038 Gravois Road | William H. Sappington House |
| 11314 Gravois Road | Haag-Singer Building |
| 11420 Gravois Road, front | Seibert Restaurant |
| 11420 Gravois Road, rear | George Philipp Werner House |
| 11448 Gravois Road | Ossing House |
| 11521 Gravois Road | Doctor's Building |
| 11550 Gravois Road | old Frey Brothers Hardware |
| 11570 Gravois Road | Anna Keller House |
| 11627 Gravois Road | Meyer Dental Building |

AFFTON SURVEY
BY SCHOOL DISTRICT
Page Three
LINDBERGH SCHOOL DISTRICT, continued

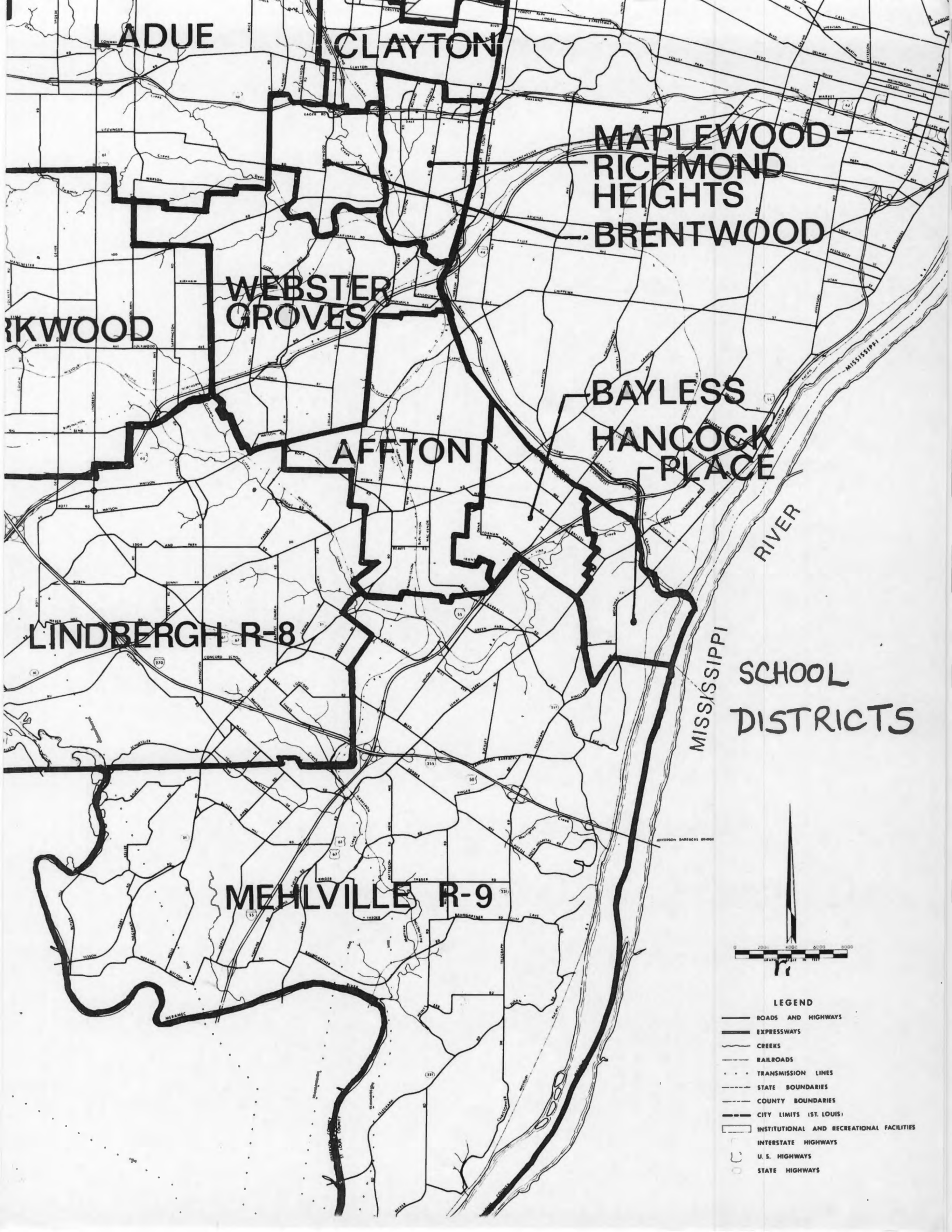
9716 Green Park Road
Laclede Station at Rock Hill
10763 Lavinia Drive
4532 South Lindbergh Blvd.
4900 South Lindbergh Blvd.
10103 Musick
Rock Hill at Laclede Station
9148 Sappington Road
9227 Sappington Road
9538 Sappington Road
9538 Sappington Road, rear
10068 Sappington Road
12018 Southwick Drive
4922 Valley Crest Drive

John Mueller House
Forest Haven pylons
Theiss-Hogenmiller House
Mark Twain Theater
St. Louis State Historical Marker
Wetherell- Theiss House
Forest Haven, Grantwood Village
Ross Wagner Farm
Elizabeth Gempp Estate
Samuel Livingston House
Dr. Francis Sappington cabin
Tautphaeus House
Pipkin House
Otto Theiss House

MEHLVILLE SCHOOL DISTRICT

11234 Flori Drive
4533 Green Park Road
10995 Kohrs Lane
4840 Reavis Barracks Road
*11333 St. John's Church Road
10245 Spokane Drive

Philip J. Crecelius House
Theobald Guth House
Herpel House & barn
Hesch Farm
St. John's Evangelical Church
Stuenkel Farm



LADUE

CLAYTON

MAPLEWOOD-
RICHMOND
HEIGHTS
BRENTWOOD

WEBSTER
GROVES

KIRKWOOD

AFFTON

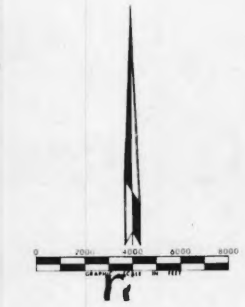
BAYLESS
HANCOCK
PLACE

LINDBERGH R-8

MEHLVILLE R-9

MISSISSIPPI
RIVER

SCHOOL
DISTRICTS



- LEGEND**
- ROADS AND HIGHWAYS
 - EXPRESSWAYS
 - CREEKS
 - RAILROADS
 - TRANSMISSION LINES
 - STATE BOUNDARIES
 - COUNTY BOUNDARIES
 - CITY LIMITS (ST. LOUIS)
 - INSTITUTIONAL AND RECREATIONAL FACILITIES
 - INTERSTATE HIGHWAYS
 - U. S. HIGHWAYS
 - STATE HIGHWAYS

**AFFTON SURVEY
BY THEME**

NOTE: Some properties appear more than once

PIONEER SETTLEMENT AND FARM FAMILIES

9870 East Concord Road
10040 Concord School Road
10208 Concord School Road
10408 Concord School Road
10448 Concord School Road
11234 Flori Drive
10501 Gravois Road
11038 Gravois Road
11420 Gravois Road, rear
4533 Green Park Road
9716 Green Park Road
4839 Heidelberg Avenue
10995 Kohrs Lane
10763 Lavinia Drive
8521 Mackenzie Road
10103 Musick Road
8815 Pardee Road, at Rock Hill
4840 Reavis Barracks Road
[REDACTED]
9148 Sappington Road
9538 Sappington Road, rear
10068 Sappington Road
12018 Southwick Drive
10245 Spokane Drive
4922 Valley Crest Drive

Aff-Gebhardt House
Concord Farmers Club
Peter Dietrich House
Henry Wauge House
Christoph Heim House
Philip J. Crecelius House
Hardscrabble
William H. Sappington House
George Philipp Werner House
Theobald Guth House
John Mueller House
Brannan-Horst House
Herpel House
Theiss-Hogenmiller House
Thomas K. Darlow House
Wetherell- Theiss House
Christine Matt house & barn
Hesch Farm
[REDACTED]
Ross Wagner Farm
Dr. Francis Sappington cabin
Tautphaeus House
Pipkin House
Stuenkel Farm
Otto Theiss House

OLD AFFTON VILLAGE

6703 Aliceton corner New Hampshire
6731 Aliceton Avenue
6719 Bonnie at Bonnie Terrace
*8930 Eden Avenue
9821-25 Gravois Road
9834 Gravois Road
9850 Gravois Road
9860 Gravois Road
9900 Gravois Road
9902 Gravois Road
8757 New Hampshire Avenue
8761 New Hampshire Avenue
8765 New Hampshire at Bonnie
8803 New Hampshire Avenue
8807 New Hampshire Avenue
8811 New Hampshire Avenue

William H. Cannon House
Ollie T. Woods House
Joseph T. Berry House
Eden Evangelical Church
Schneeberger Merchandise Store
Agnes Bowles House
Uriah Wise House
Wohlschlaeger House
Clabes Hardware
Mehl House
Carl Strippgen House
Detjen-Strippgen House
George Perrot House
Charles Werner House
William Werner House
Adolph Roy House

AFFTON SURVEY
BY THEME
Page Two

OLD SAPPINGTON VILLAGE

11038 Gravois Road
11314 Gravois Road
11420 Gravois Road, front
11420 Gravois Road, rear
11448 Gravois Road
11550 Gravois Road
11570 Gravois Road

William H. Sappington House
Haag-Singer Building
Seibert Restaurant
George Philipp Werner House
Ossing House
old Frey Brothers Hardware
Anna Keller House

"THE HEIGHTS" (GARDENVILLE)

7810 Gravois Road
7820 Gravois at Heidelberg
8120-22 Gravois Road
8126-28 Gravois Road
8327 Gravois Road
4935 Heege Road
4980 Heege Road
5032 Heege Road
*5100 Heege Road
5306 Heege Road
5401 Heege Road
4839 Heidelberg Avenue
5200 Hilda Avenue
7920 Hildesheim Avenue
4701 Seibert at Hildesheim

Stanze-Thomas Monument Company
August Stanze House
Albert Walck Building
Roy Investment Building
Salem Lutheran Church
Frank Tonkovic House
St. George's Catholic Church
Ernest Hoge house
Old Ward I School
Harrison-Proehl House
Charles F. Browne House
Brannan-Horst House
Gardenville Community Church
Matt Tomich House
Albert H. Weber House

LAKEWOOD SUBDIVISION

7734 Fleta Street
7753 Fleta Street
7901 Fleta Street

Frank A. Hartung House
James G. Hughes House
Lakewood Hall

CEMETERIES

11735 Denny Road
7901 Gravois Road
7901 Gravois Road
8430 Gravois Road
*8430 Gravois Road
10180 Gravois Road
10180 Gravois Road
6901 Mackenzie Road
7800 Mackenzie Road
8480 Mackenzie Road
7725 S. Rock Hill Road

St. Lucas & Park Hill Cemeteries
New St. Marcus Cemetery
New St. Marcus Cemetery, office
New Mount Sinai Cemetery
New Gates, New Mount Sinai Cemetery
Sunset Memorial Park, gates
Sunset Memorial Park, clock tower
Resurrection Cemetery
Lakewood Park Cemetery
Our Redeemer Cemetery
St. Paul Churchyard

AFFTON SURVEY
BY THEME
Page Three

CHURCHES

*11735 Denny Road
*11835 Denny Road
*8930 Eden Avenue
8327 Gravois Road
4980 Heege Road
5200 Hilda Avenue
8721 Mackenzie Road
*11333 St. John's Church Road

St. Lucas Evangelical Church
old Sappington Congregational Church
Eden Evangelical Church
Salem Lutheran Church
St. George's Catholic Church
Gardenville Community Church
Cornerstone Church
St. John's Evangelical Church

SCHOOLS

10305 Concord School Road
*11011 Gravois at Eddie & Park
8001 Mackenzie Road
8520 Mackenzie Road
*8701 Mackenzie Road
*4520 Weber Road
4530 Weber Road

Concord School
Sappington School #49
Heege School
old Affton Senior High School
McKenzie School #47
Old Bayless School (demolished)
Old Bayless High School

UNUSUAL STONEWORK

11637 Denny Road
11643 Denny Road
8327 Gravois Road
4935 Heege Road
4701 Seibert at Hildesheim

Frank Swantner House
Walter Werkmeister House
Salem Lutheran Church
Frank Tonkovic House
Albert H. Weber House

EARLY TWENTIETH CENTURY ESTATES

9950 Canterleigh Drive
10501 Gravois Road
"
9227 Sappington Road
9538 Sappington Road

C. Albert Marschel House
Grant's Farm
Bauernhof
Elizabeth Gempp Estate
Samuel Livingston House

ART DECO/1930S

9136 Coral Drive
9132 Flores at Lucia
9510 Gravois Road
11521 Gravois Road
11627 Gravois Road
*1114 Laclede Station Road
*1118 Laclede Station Road
Lucia at Gravois
Rosemary, Philo, & Kathleen Aves.
9161 Vasel at Lucia

Julia Fischer House
William Zimmer House
Affton Fire District
Doctor's Building
Meyer Dental Building
Edward E. Pounds House
Joseph D. Keller House
Gravois Gardens Subdivision
Wilbur Terrace
Gilbert Hansmann House

**AFFTON SURVEY
BY THEME
Page Four**

BUNGALOWS

9860 Gravois Road
11448 Gravois Road
4935 Heege Road
7920 Hildesheim Avenue
8757 New Hampshire Avenue
4701 Seibert at Hildesheim
8909 Valcour Avenue
8941 Valcour Avenue

Wohlschlaeger House
Ossing House
Frank Tonkovic House
Matt Tomich House
Carl Strippgen House
Albert H. Weber House
Bertha Toeneboehm House
William H. Hanewinkel House

POST-WAR SUBDIVISIONS

Holly Hills Avenue
Huntingdon Drive
Laclede Station at Rock Hill
1166 Pembroke at Wimbledon
Stonell at Tesson Ferry

Village of Mackenzie
St. George Subdivision
Forest Haven pylons
McDonald Lustron House
Lakeshire pylons

ROADSIDE AMERICA

9005 Gravois Road
4532 South Lindbergh Blvd.
4900 South Lindbergh Blvd.
*7746 Watson Road
7800 Watson Road
8208 Watson Road
6930 Weber Road

Federhofer's Bakery sign
Mark Twain Theater
St. Louis State Historical Marker
Crystal Motel
Wayside Motel
La Casa Grande Motel
Velvet Freeze Ice Cream Cone

AFFTON SURVEY KEY TO MAP

| | | |
|-----|------------------------------------|--------------------------------------|
| 1. | 6703 Aliceton corner New Hampshire | William H. Cannon House |
| 2. | 6731 Aliceton Avenue | Ollie T. Woods House |
| 3. | 6719 Bonnie at Bonnie Terrace | Joseph T. Berry House |
| 4. | 9950 Canterleigh Drive | C. Albert Marschel House |
| 5. | 9870 East Concord Road | Aff-Gebhardt House |
| 6. | 10040 Concord School Road | Concord Farmers Club |
| 7. | 10208 Concord School Road | Peter Dietrich House |
| 8. | 10305 Concord School Road | Concord School |
| 9. | 10408 Concord School Road | Henry Wauge House |
| 10. | 10448 Concord School Road | Christoph Heim House |
| 11. | 9136 Coral Drive | Julia Fischer House |
| 12. | 11637 Denny Road | Frank Swantner House |
| 13. | 11643 Denny Road | Walter Werkmeister House |
| 14. | *11735 Denny Road | St. Lucas Evangelical Church |
| 15. | 11735 Denny Road | St. Lucas & Park Hill Cemeteries |
| 16. | *11835 Denny Road | old Sappington Congregational Church |
| 17. | *8930 Eden Avenue | Eden Evangelical Church |
| 18. | 7734 Fleta Street | Frank A. Hartung House |
| 19. | 7753 Fleta Street | James G. Hughes House |
| 20. | 7901 Fleta Street | Lakewood Hall |
| 21. | 9132 Flores at Lucia | William Zimmer House |
| 22. | 11234 Flori Drive | Philip J. Crecelius House |
| 23. | 7810 Gravois Road | Stanze-Thomas Monument Company |
| 24. | 7820 Gravois at Heidelberg | August Stanze House |
| 25. | 7901 Gravois Road | New St. Marcus Cemetery |
| 26. | 7901 Gravois Road | New St. Marcus Cemetery, office |
| 27. | 8120-22 Gravois Road | Albert Walck Building |
| 28. | 8126-28 Gravois Road | Roy Investment Building |
| 29. | 8327 Gravois Road | Salem Lutheran Church |
| 30. | 8430 Gravois Road | New Mount Sinai Cemetery |
| 31. | *8430 Gravois Road | New Gates, New Mount Sinai Cemetery |
| 32. | 9005 Gravois Road | Federhofer's Bakery sign |
| 33. | 9510 Gravois Road | Affton Fire District |
| 34. | 9821-25 Gravois Road | Schneeberger Merchandise Store |
| 35. | 9834 Gravois Road | Agnes Bowles House |
| 36. | 9850 Gravois Road | Uriah Wise House |
| 37. | 9860 Gravois Road | Wohlschlaeger House |
| 38. | 9900 Gravois Road | Clabes Hardware |
| 39. | 9902 Gravois Road | Mehl House |
| 40. | 10180 Gravois Road | Sunset Memorial Park, gates |
| 41. | 10180 Gravois Road | Sunset Memorial Park, clock tower |
| 42. | 10501 Gravois Road | Grant's Farm |
| 43. | " | Bauernhof |
| 44. | " | Hardscrabble |
| 45. | *11011 Gravois at Eddie & Park | Sappington School #49 |
| 46. | 11038 Gravois Road | William H. Sappington House |
| 47. | 11314 Gravois Road | Haag-Singer Building |
| 48. | 11420 Gravois Road, front | Seibert Restaurant |
| 49. | 11420 Gravois Road, rear | George Philipp Werner House |
| 50. | 11448 Gravois Road | Ossing House |
| 51. | 11521 Gravois Road | Doctor's Building |
| 52. | 11550 Gravois Road | old Frey Brothers Hardware |
| 53. | 11570 Gravois Road | Anna Keller House |
| 54. | 11627 Gravois Road | Meyer Dental Building |

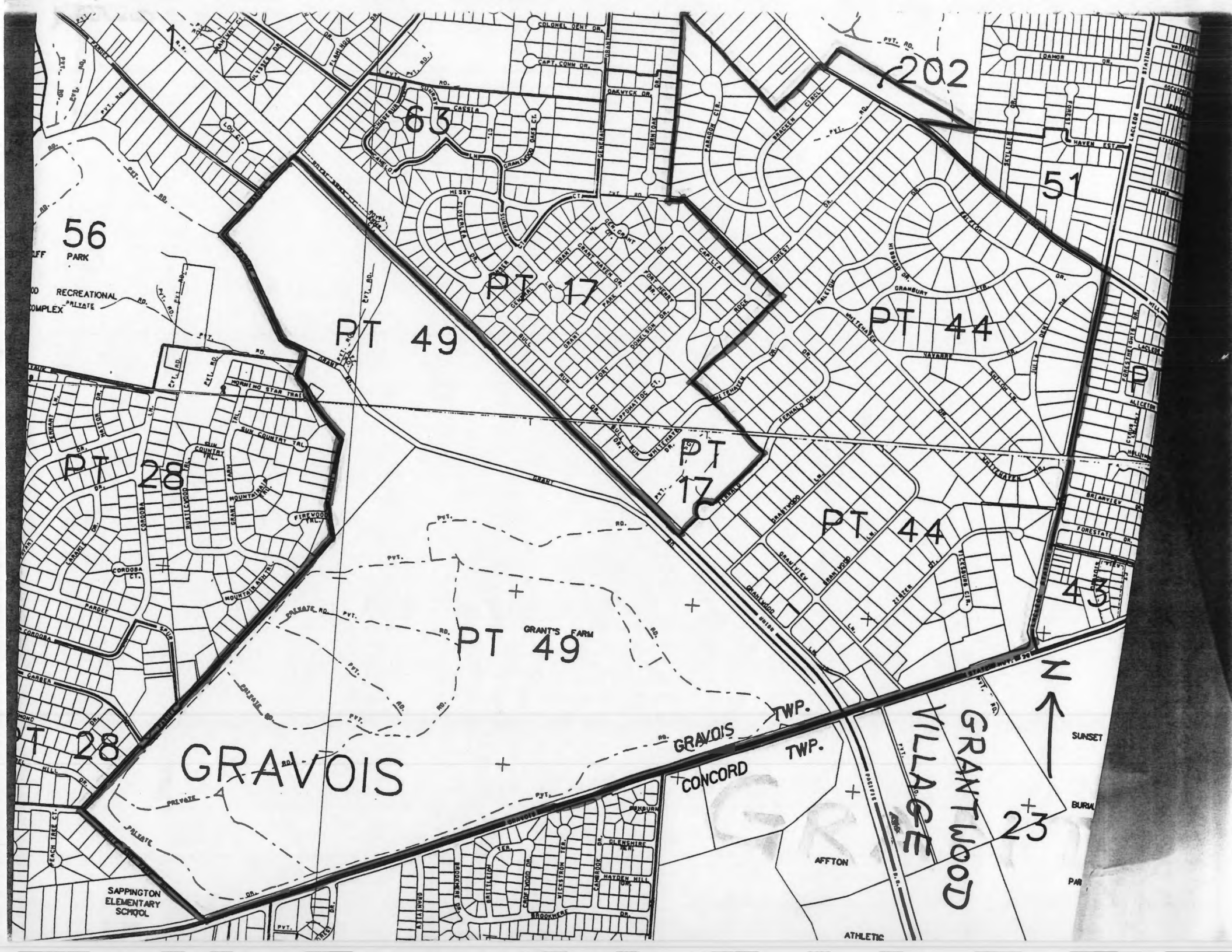
AFFTON SURVEY BY ADDRESS
PAGE TWO

- | | | |
|------|-----------------------------------|-----------------------------------|
| 55. | 4533 Green Park Road | Theobald Guth House |
| 56. | 9716 Green Park Road | John Mueller House |
| 57. | 4935 Heege Road | Frank Tonkovic House |
| 58. | 4980 Heege Road | St. George's Catholic Church |
| 59. | 5032 Heege Road | Ernest Hoge house |
| 60. | *5100 Heege Road | Old Ward I School |
| 61. | 5306 Heege Road | Harrison-Proehl House |
| 62. | 5401 Heege Road | Charles F. Browne House |
| 63. | 4839 Heidelberg Avenue | Brannan-Horst House |
| 64. | 5200 Hilda Avenue | Gardenville Community Church |
| 65. | 7920 Hildesheim Avenue | Matt Tomich House |
| 66. | Holly Hills Avenue | Village of Mackenzie |
| 67. | Huntingdon Drive | St. George Subdivision |
| 68. | 10995 Kohrs Lane | Herpel House |
| 69. | *1114 Laclede Station Road | Edward E. Pounds House |
| 70. | *1118 Laclede Station Road | Joseph D. Keller House |
| 71. | Laclede Station at Rock Hill | Forest Haven pylons |
| 72. | 10763 Lavinia Drive | Theiss-Hogenmiller House |
| 73. | 4532 South Lindbergh Blvd. | Mark Twain Theater |
| 74. | 4900 South Lindbergh Blvd. | St. Louis State Historical Marker |
| 75. | Lucia at Gravois | Gravois Gardens Subdivision |
| 76. | 6901 Mackenzie Road | Resurrection Cemetery |
| 77. | 7800 Mackenzie Road | Lakewood Park Cemetery |
| 78. | 8001 Mackenzie Road | Heege School |
| 79. | 8480 Mackenzie Road | Our Redeemer Cemetery |
| 80. | 8520 Mackenzie Road | old Affton Senior High School |
| 81. | 8521 Mackenzie Road | Thomas K. Darlow House |
| 82. | *8701 Mackenzie Road | McKenzie School #47 |
| 83. | 8721 Mackenzie Road | Cornerstone Church |
| 84. | 10103 Musick Road | Wetherell- Theiss House |
| 85. | 8757 New Hampshire Avenue | Carl Strippgen House |
| 86. | 8761 New Hampshire Avenue | Detjen-Strippgen House |
| 87. | 8765 New Hampshire at Bonnie | George Perrot House |
| 88. | 8803 New Hampshire Avenue | Charles Werner House |
| 89. | 8807 New Hampshire Avenue | William Werner House |
| 90. | 8811 New Hampshire Avenue | Adolph Roy House |
| 91. | 8815 Pardee Road, at Rock Hill | Christine Matt house & barn |
| 92. | 1166 Pembroke at Wimbledon | McDonald Lustron House |
| 93. | 4840 Reavis Barracks Road | Hesch Farm |
| 94. | 7725 S. Rock Hill Road | St. Paul Churchyard |
| 95. | [REDACTED] | [REDACTED] |
| 96. | Rosemary, Philo, & Kathleen Aves. | Wilbur Terrace |
| 97. | *11333 St. John's Church Road | St. John's Evangelical Church |
| 98. | 9148 Sappington Road | Ross Wagner Farm |
| 99. | 9227 Sappington Road | Elizabeth Gemp Estate |
| 100. | 9538 Sappington Road | Samuel Livingston House |
| 101. | 9538 Sappington Road, rear | Dr. Francis Sappington cabin |
| 102. | 10068 Sappington Road | Tautphaeus House |

AFFTON SURVEY BY ADDRESS
PAGE THREE

- 103. 4701 Seibert at Hildesheim
- 104. 12018 Southwick Drive
- 105. 10245 Spokane Drive
- 106. Stonell at Tesson Ferry
- 107. 8909 Valcour Avenue
- 108. 8941 Valcour Avenue
- 109. 4922 Valley Crest Drive
- 110. 9161 Vasel at Lucia
- 111. *7746 Watson Road
- 112. 7800 Watson Road
- 113. 8208 Watson Road
- 114. *4520 Weber Road
- 115. 4530 Weber Road
- 116. 6930 Weber Road

Albert H. Weber House
Pipkin House
Stuenkel Farm
Lakeshire pylons
Bertha Toeneboehm House
William H. Hanewinkel House
Otto Theiss House
Gilbert Hansmann House
Crystal Motel
Wayside Motel
La Casa Grande Motel
Old Bayless School (demolished)
Old Bayless High School
Velvet Freeze Ice Cream Cone



56

PARK

RECREATIONAL
COMPLEX

63

202

51

PT. 17

PT 49

PT 44

PT 28

PT 17

PT. 44

43

PT 49

GRANT'S FARM

GRAVOIS

GRAND'S

CONCORD

TWP.

TWP.

GRANT WOOD
VILLAGE

23

N
↑

SUNSET

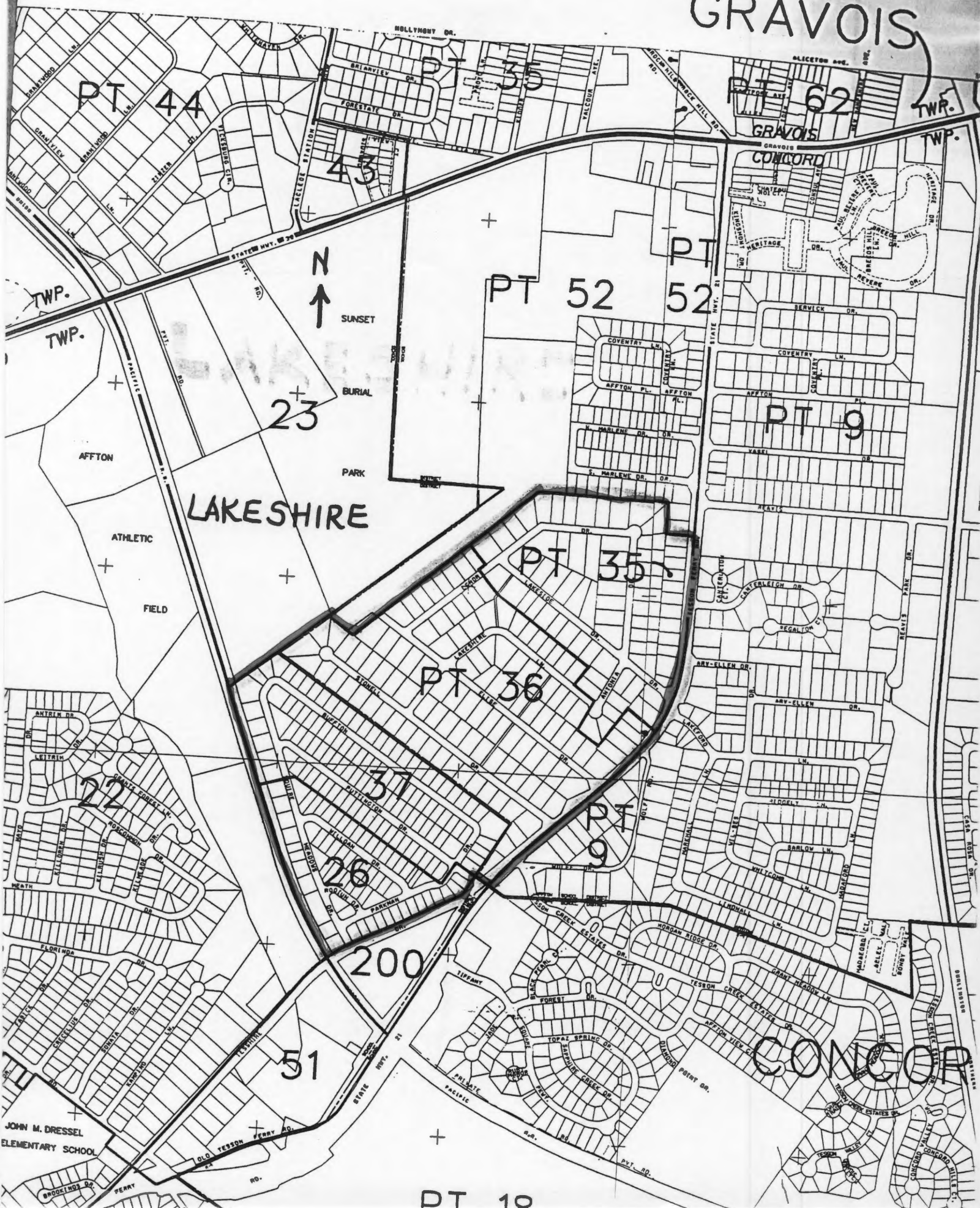
BURN

PAR

ATHLETIC

SAPPINGTON
ELEMENTARY
SCHOOL

GRAVOIS





71

69

41

21

39

40

MACKENZIE



GRAVOIS

38

22

23

MACKENZIE JUNIOR HIGH SCHOOL

RESURRECTION CEMETERY

PARK

CEMETERY

LAKEWOOD

GENESTA W. PARK

GENESTA W. PARK

GENESTA W. PARK

GENESTA W. PARK

GENESTA W. PARK

GENESTA W. PARK

GENESTA W. PARK

GENESTA W. PARK

GENESTA W. PARK

GENESTA W. PARK

GENESTA W. PARK

GENESTA W. PARK

GENESTA W. PARK

GENESTA W. PARK

GENESTA W. PARK

GENESTA W. PARK

GENESTA W. PARK

GENESTA W. PARK

GENESTA W. PARK

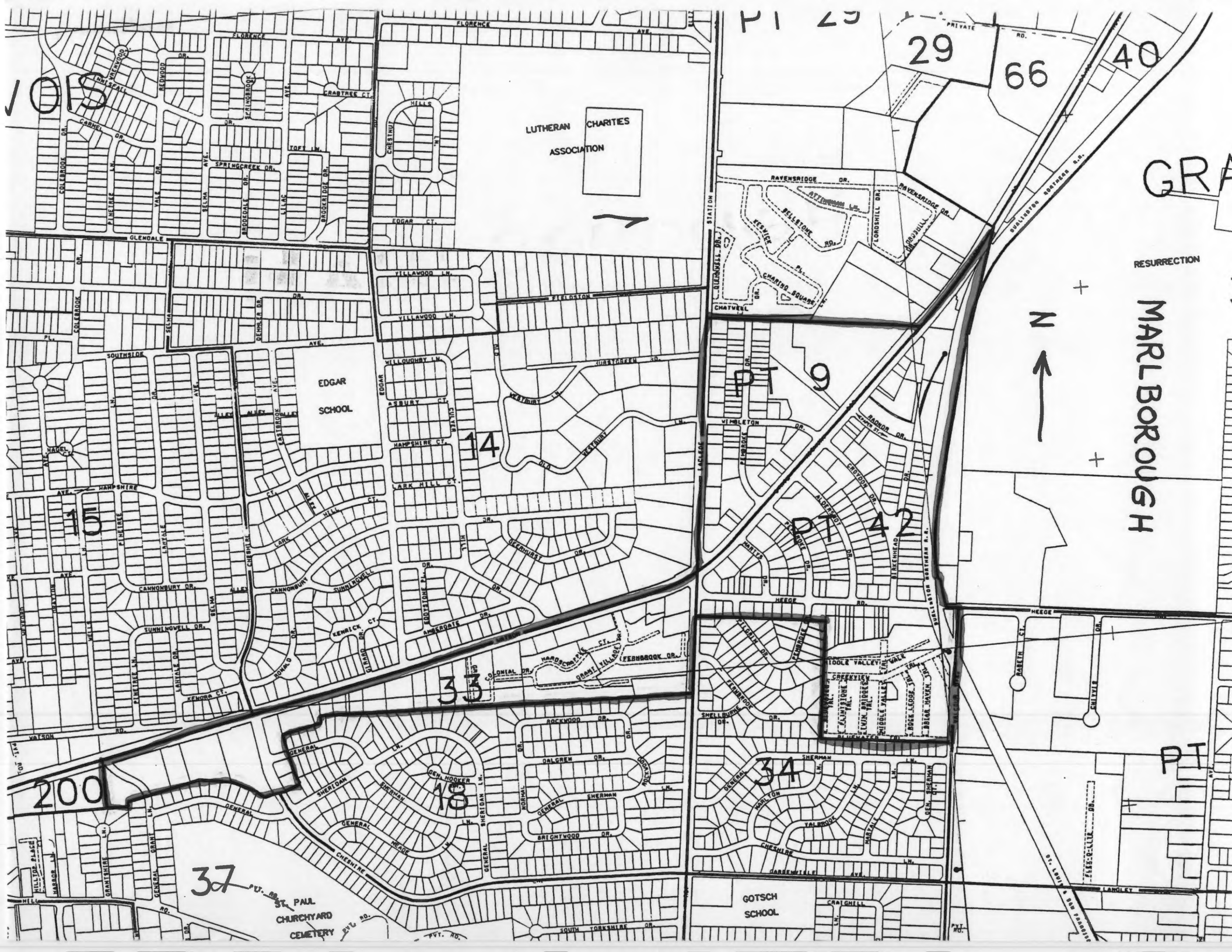
GENESTA W. PARK

GENESTA W. PARK

GENESTA W. PARK

GENESTA W. PARK

GENESTA W. PARK



1015

PT 29

29

66

40

GRA

RESURRECTION

MARLBOROUGH

N
↑

LUTHERAN CHARITIES
ASSOCIATION

EDGAR
SCHOOL

14

PT 9

PT 42

33

200

37

18

34

PT

ST. PAUL
CHURCHYARD
CEMETERY

GOTSCH
SCHOOL





PT 19

24

CONCORD

PT 4

PT 34

WILBUR PARK

PT 2
NEW MT SINAI CEMETERY
CONCORD

BAYLESS
ELEMENTARY &
MIDDLE SCHOOLS

PT 68

PT 4

PT 34

PT 2

PT 17

69

6

PT 8

27

BAYLESS
HIGH SCHOOL

ST. LOUIS
CO. LIBRARY
WEBER ROAD
BRANCH

OHLENDORF
COUNTY
PARK

CONCORD
LEMA