



AMERICA'S  
STATE  
PARKS



# 2018 Midwest State Park Executives Conference

April 16-20 - Echo Bluff State Park

# Innovation



AMERICA'S  
STATE  
PARKS

SOUTH CAROLINA  
COME OUT  
& PLAY  
STATE PARKS



An  
opportunity  
to make a  
difference!



AMERICA'S  
STATE  
PARKS

SOUTH CAROLINA  
COME OUT  
& PLAY  
STATE PARKS



Making a difference more often than not, takes time and energy and the effects are not always easily measured and they are not always immediate.

AMERICA'S  
STATE  
PARKS

SOUTH CAROLINA  
COME OUT  
& PLAY  
STATE PARKS



“Created from the finest materials available, water resistant, tough as a rock, all natural. Established 1935. Tradition for generations.”  
Civilian Conservation Corps



AMERICA'S  
STATE  
PARKS



Funding.  
Infrastructure.  
Capacity issues.  
Keeping the millennials  
engaged.



*And ....*

AMERICA'S  
STATE  
PARKS

SOUTH CAROLINA  
COME OUT  
& PLAY  
STATE PARKS



What are the challenges?

AMERICA'S  
STATE  
PARKS

SOUTH CAROLINA  
COME OUT  
& PLAY  
STATE PARKS



The next steps for the second century...  
What will it take?

AMERICA'S  
STATE  
PARKS







AMERICA'S  
STATE  
PARKS





No more free lunch!

AMERICA'S  
STATE  
PARKS

SOUTH CAROLINA  
COME OUT  
& PLAY  
STATE PARKS

## *Authentic Leaders are:*

Guided by qualities of the heart, by passion and compassion. "They lead with purpose, meaning, and values. They build enduring relationships with people. Others follow them because they know where they stand. They are consistent and self-disciplined. When their principles are tested, they refuse to compromise."

AMERICA'S  
STATE  
PARKS

SOUTH CAROLINA  
COME OUT  
& PLAY  
STATE PARKS



Do not let perfect get in the way of doing good !



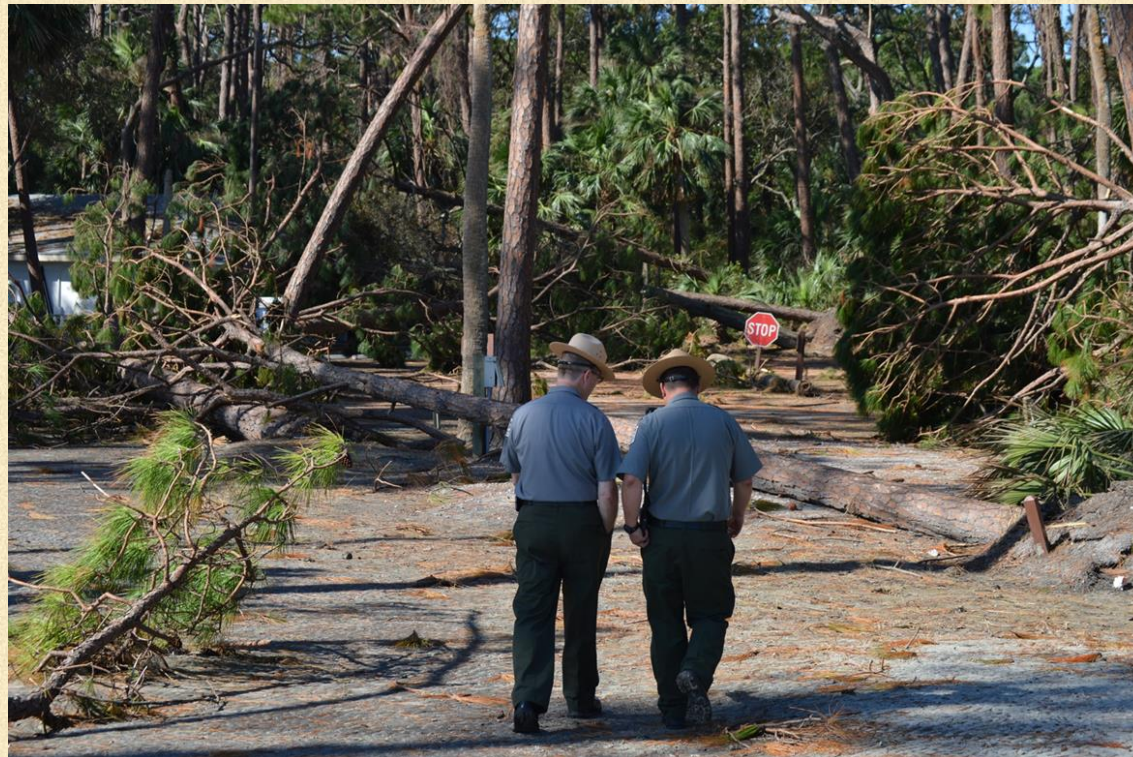
AMERICA'S  
STATE  
PARKS

SOUTH CAROLINA  
COME OUT  
& PLAY  
STATE PARKS

When the need for something becomes imperative, you are forced to find ways of getting or achieving it.

AMERICA'S  
STATE  
PARKS

SOUTH CAROLINA  
COME OUT  
& PLAY  
STATE PARKS





It's all  
about the  
resource.

AMERICA'S  
STATE  
PARKS

SOUTH CAROLINA  
COME OUT  
& PLAY  
STATE PARKS



Maybe  
they *do*  
listen...

AMERICA'S  
STATE  
PARKS

SOUTH CAROLINA  
COME OUT  
& PLAY  
STATE PARKS

# Ten great places to see the total solar eclipse on August 21, 2017



**Sandhills of western Nebraska**  
Duration of totality is 2 min 30 sec  
Totality begins at 11:49 a.m. MDT

The Sandhills country of Nebraska is a prime location for viewing the eclipse. A careful weather observer has taken notes over 20 years and reports that 70% of late August days are favorable for eclipse viewing. North Platte is a good staging area with hotels and good highways for distance traveling. A bonus is that you can enjoy dark summer nights and a glorious view of the Milky Way.

**Carbondale, Illinois**  
Duration of totality is 2 min 41.6 sec  
Totality begins at 1:20 p.m. CDT

Carbondale has a special distinction—it is near the crossing centerlines of both the August 21, 2017 total solar eclipse and the coming April 8, 2024 total solar eclipse! Also, the point of longest eclipse for 2017 is just southeast of Carbondale at the geographic location of 37° 34' 4.3" North latitude, 89° 06' 10.0" West longitude. Just don't forget to drive east or west if clouds threaten to eclipse totality!

**Hopkinsville, Kentucky**  
Duration of totality is 2 m 41.2 sec  
Totality begins at 1:24 p.m. CDT

The civic boosters of Hopkinsville cite their fair city as the best spot in the nation for the eclipse. While Hopkinsville is a great location, you can travel for hundreds of miles east and west along the eclipse centerline and receive within 1 or 2 seconds of maximum eclipse duration. But if you would like to join a festive crowd, Hopkinsville will certainly be a great location to enjoy the eclipse.

**Great Smoky Mountains Natl. Park**  
Duration of totality is 1 m 17 sec  
Totality begins at 2:35 p.m. EDT

While this area is different from the rest by being closer to the northern limit line of total solar eclipse, this park will be an intriguing location to view the eclipse due to its expansive views. This site provides the possibility of seeing the Moon's shadow racing across the landscape, a dramatic sight that will add another dimension to your experience of the eclipse.

**Madras, Oregon**  
Duration of totality is 2 min 4 sec  
Totality begins at 10:19 a.m. PDT

While the Oregon coast is at risk of marine clouds, the interior of this state actually enjoys the nation's best weather prospects. Madras is easily accessible from Portland with a two-hour drive and sits at the junction of four highways for good mobility. A bonus is the prospect of seeing Mt. Jefferson to the west darken as totality envelops this prominent peak 17 seconds before totality in Madras.

**Snake River Valley, Idaho**  
Duration of totality is 2 min 18 sec  
Totality begins at 11:33 a.m. MDT

The Snake River Valley in eastern Idaho consists of farmland and lava fields. This area is an attractive spot for eclipse chasers because of very good weather prospects and many roads for evasive maneuvering in the event of local clouds.

**Casper, Wyoming**  
Duration of totality is 2 min 26 sec  
Totality begins at 11:42 a.m. MDT

It is for good reason that the Astronomical League is holding their annual Astrocon Conference in Casper just before eclipse day. Not only does Casper have great weather prospects, but also uncrowded highways that extend west, east, north, and south that can be used for every weather contingency.

**St. Joseph, Missouri**  
Duration of totality is 2 min 39 sec  
Totality begins at 1:06 p.m. CDT

St. Joseph is right on the centerline of the eclipse path and enjoys one of the longest durations of any sizable city in the nation. A large eclipse viewing party is being organized at the Rosecrans Memorial Airport with educational speakers, solar telescopes, and more. If you would like to enjoy the eclipse in the company of astronomers, this is an ideal choice.

**Nashville, Tennessee**  
Duration of totality is 1 min 57 sec  
Totality begins at 1:27 p.m. CDT

Nashville deserves special note as the largest city wholly within the path of the total solar eclipse. While its location is offset from the centerline by about 20 miles, it still enjoys a good duration of nearly two minutes. Surely the nation's music capital will produce some memorable songs on the occasion of the Great American Eclipse.

**Columbia, South Carolina**  
Duration of totality is 2 min 30 sec  
Totality begins at 2:43 p.m. EDT

Columbia is a sizable city with long duration of totality and a fine network of highways for mobility on eclipse day. For millions of Americans along the Atlantic Seaboard, this will be the most accessible city with hotels in the path of total solar eclipse.

# Uniquely positioned.

AMERICA'S STATE PARKS







Focus on the journey, not the destination. Joy is found not in finishing an activity but in doing it.

AMERICA'S  
STATE  
PARKS



Innovation, leadership...



an opportunity to make a difference!

AMERICA'S  
STATE  
PARKS

SOUTH CAROLINA  
COME OUT  
& PLAY  
STATE PARKS