

MIDWEST STATE PARKS EXECUTIVE CONFERENCE



State Reports ROUNDTABLE

HOSTED BY MISSOURI STATE PARKS | MISSOURI STATE PARKS FOUNDATION

Missouri State Parks

FIVE CHALLENGES

Ben Ellis

Division Director
Missouri State Parks

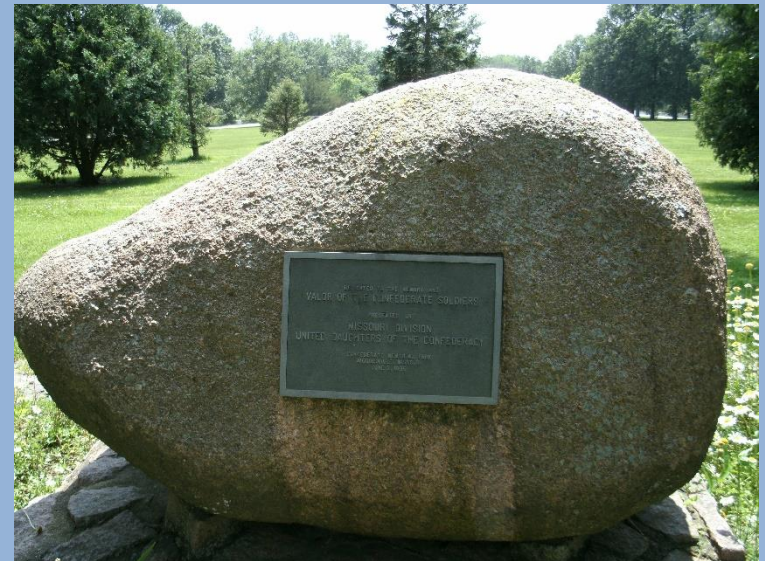


MISSOURI
STATE PARKS

Rock Island Corridor



Confederate Memorials



Four New Park Properties

Bryant Creek State Park

Eleven Point State Park

Jay Nixon State Park

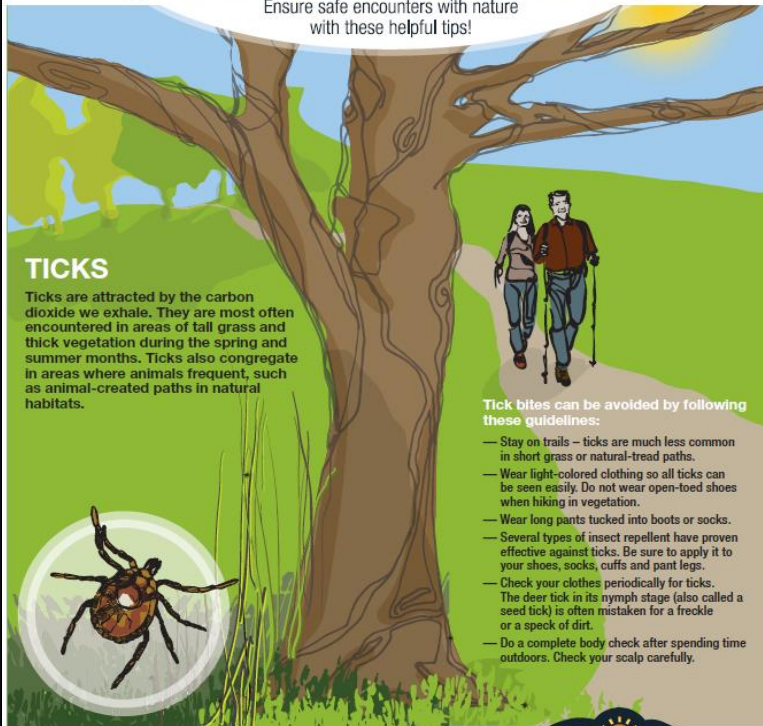
Ozark Mountain State Park



ENCOUNTERS with NATURE

Make your visit to Missouri State Parks an enjoyable one.

Ensure safe encounters with nature
with these helpful tips!



TICKS

Ticks are attracted by the carbon dioxide we exhale. They are most often encountered in areas of tall grass and thick vegetation during the spring and summer months. Ticks also congregate in areas where animals frequent, such as animal-created paths in natural habitats.

Tick bites can be avoided by following these guidelines:

- Stay on trails – ticks are much less common in short grass or natural-tread paths.
- Wear light-colored clothing so all ticks can be seen easily. Do not wear open-toed shoes when hiking in vegetation.
- Wear long pants tucked into boots or socks.
- Several types of insect repellent have proven effective against ticks. Be sure to apply it to your shoes, socks, cuffs and pant legs.
- Check your clothes periodically for ticks. The deer tick in its nymph stage (also called a seed tick) is often mistaken for a freckle or a speck of dirt.
- Do a complete body check after spending time outdoors. Check your scalp carefully.

mostateparks.com



06/17



PREVENT TICK BITES!

- WEAR REPELLENT
- CHECK FOR TICKS DAILY
- SHOWER SOON AFTER BEING OUTDOORS
- CALL YOUR DOCTOR IF YOU GET A FEVER OR RASH



For more information:
health.mo.gov/ticks

#688

AN EQUAL OPPORTUNITY/AFFIRMATIVE ACTION EMPLOYER. Services provided on a nondiscriminatory basis.

Bourbon Virus

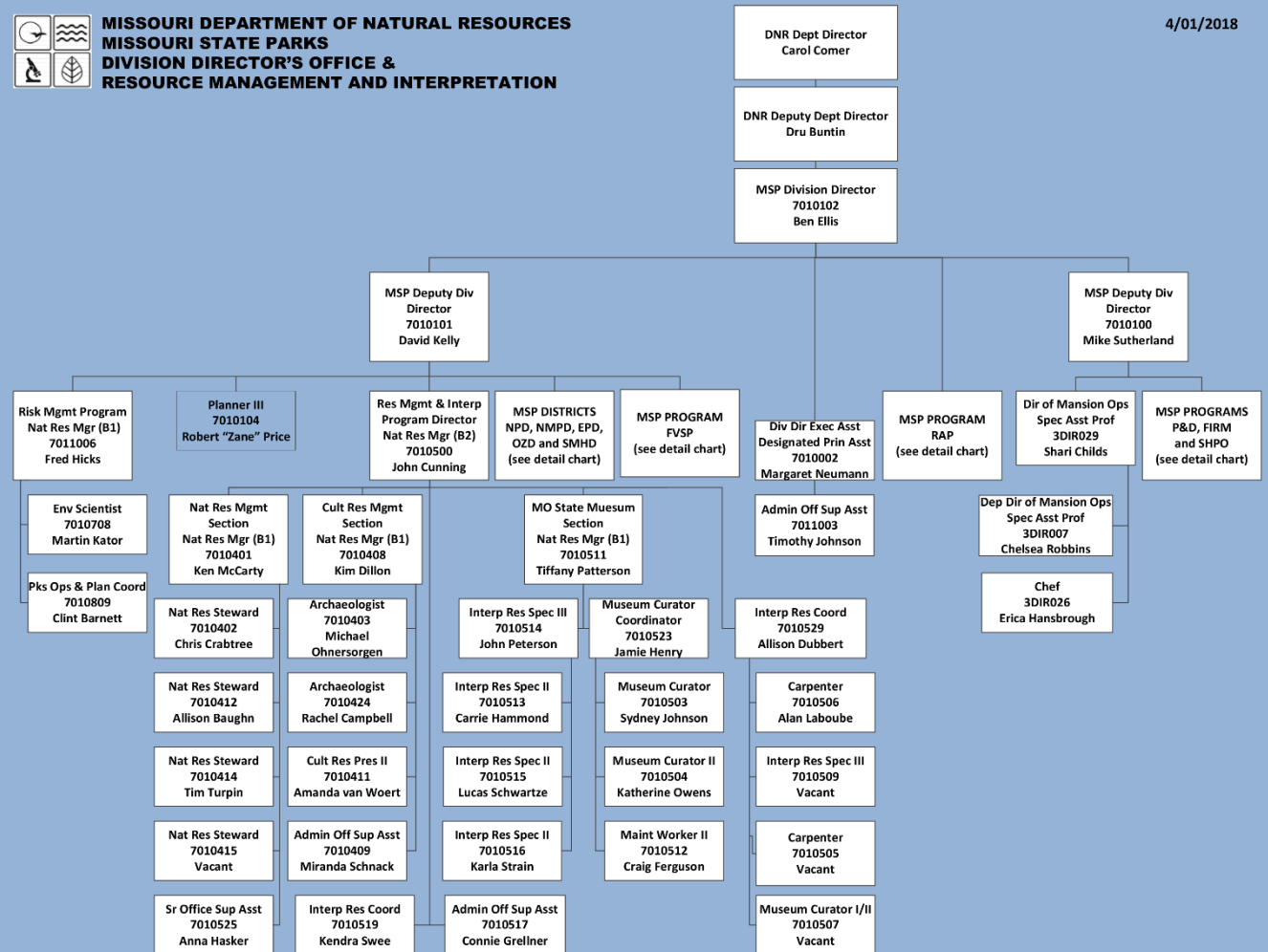
MISSOURI STATE PARKS





**MISSOURI DEPARTMENT OF NATURAL RESOURCES
MISSOURI STATE PARKS
DIVISION DIRECTOR'S OFFICE &
RESOURCE MANAGEMENT AND INTERPRETATION**

4/01/2018



Reorganization

