

Pomme de Terre State Park

BY THE NUMBERS

LOCATION: Hickory County
NUMBER OF ACRES: 734.44
NUMBER OF FULL-TIME STAFF: 9
NUMBER OF PART-TIME STAFF: 8
VOLUNTEER HOURS:* 5,905
STEWARDSHIP HOURS: 350
2021 ATTENDANCE:* 269,280

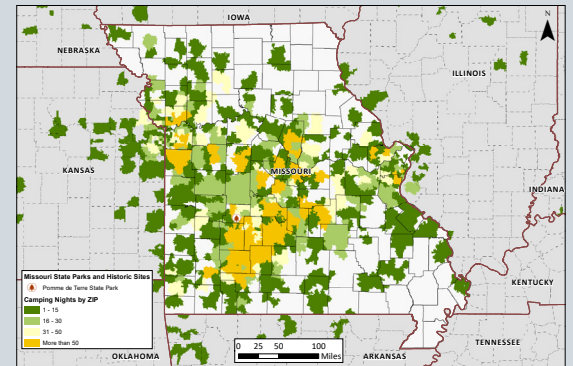
MILES OF TRAIL: 5.3
NUMBER OF STRUCTURES: 37
MILES OF ROADWAYS: 9.86
NUMBER OF PROGRAMS PRESENTED:* 1
STATE SALES TAX PAID:*** \$42,639.54
LOCAL SALES TAX PAID:*** \$20,184.40
TOTAL SALES TAX: \$62,823.94

BUDGET

SMALL MAINTENANCE & REPAIR BUDGET: \$27,000.00
ANNUAL BUDGET: \$396,749.00

CAMPING & LODGING

NUMBER OF CAMPING NIGHTS SOLD:* 16,267
NUMBER OF LODGING NIGHTS SOLD:* 1,195
NUMBER OF CAMPSITES: 240
NUMBER OF LODGING UNITS: 9
NUMBER OF OVERNIGHT GUESTS:* † 51,447
CAMPING NIGHTS SOLD BY ZIP CODE: >>>>>>



SPECIAL EVENTS

MISSOURI STATE PARK EVENTS: 2

PHOTO ALBUM



Making
Missouri
MEMORIES