

# Meramec State Park

BY THE NUMBERS

**LOCATION:** Crawford, Franklin and Washington counties

**NUMBER OF ACRES:** 6,896.33

**NUMBER OF FULL-TIME STAFF:** 10

**NUMBER OF PART-TIME STAFF:** 10

**VOLUNTEER HOURS:**\* 3,969

**STEWARDSHIP HOURS:** 965

**2023 ATTENDANCE:**\* 369,762

**MILES OF TRAIL:** 14.4

**NUMBER OF STRUCTURES:** 54

**MILES OF ROADWAYS:** 9.88

**NUMBER OF PROGRAMS PRESENTED:**\* 24

**STATE SALES TAX PAID:**\*\* \*\* \$41,913.89

**LOCAL SALES TAX PAID:**\*\* \*\* \$22,321.01

**TOTAL SALES TAX:** \$64,234.89

BUDGET

**SMALL MAINTENANCE & REPAIR BUDGET:** \$86,341.00

**CAPITAL IMPROVEMENTS PROJECTS IN PROGRESS:**\* 2

**CAPITAL IMPROVEMENTS PROJECTS COMPLETED:**\* 1

**ANNUAL BUDGET:** \$703,022.00

CAMPING & LODGING

**NUMBER OF CAMPING NIGHTS SOLD:**\* 17,934

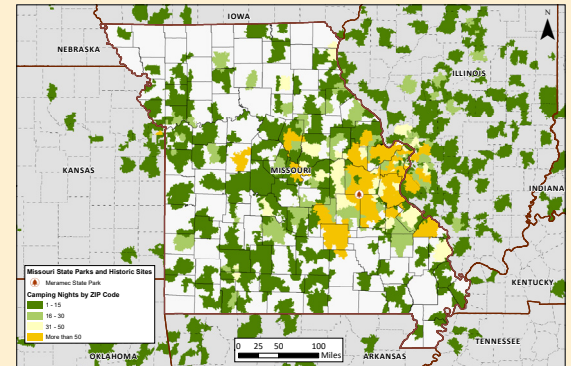
**NUMBER OF LODGING NIGHTS SOLD:**\* † 1,743

**NUMBER OF CAMPSITES:** 215

**NUMBER OF LODGING UNITS:**\* † 41

**NUMBER OF OVERNIGHT GUESTS:**\* † 59,563

**CAMPING NIGHTS SOLD BY ZIP CODE:** >>>>>>



SPECIAL EVENTS

**MISSOURI STATE PARK EVENTS:** 2

**THIRD PARTY EVENTS:** 2

**SIGNATURE EVENT:** Spooktacular

PHOTO ALBUM

