

Dr. Edmund A. Babler Memorial State Park

BY THE NUMBERS

LOCATION: St. Louis County

NUMBER OF ACRES: 2,441

NUMBER OF FULL-TIME STAFF: 7

NUMBER OF PART-TIME STAFF: 10

VOLUNTEER HOURS:* 6,329

STEWARDSHIP HOURS: 1,063.7

2023 ATTENDANCE:* 533,833

MILES OF TRAIL: 17.2

NUMBER OF STRUCTURES: 59

MILES OF ROADWAYS: 7.46

NUMBER OF PROGRAMS PRESENTED:* 190

STATE SALES TAX PAID:*** \$11,020.99

LOCAL SALES TAX PAID:*** \$10,467.99

TOTAL SALES TAX: \$21,488.98

BUDGET

SMALL MAINTENANCE & REPAIR BUDGET: \$49,000.00

ANNUAL BUDGET: \$636,968.00

CAPITAL IMPROVEMENTS PROJECTS IN PROGRESS:* 2

CAMPING & LODGING

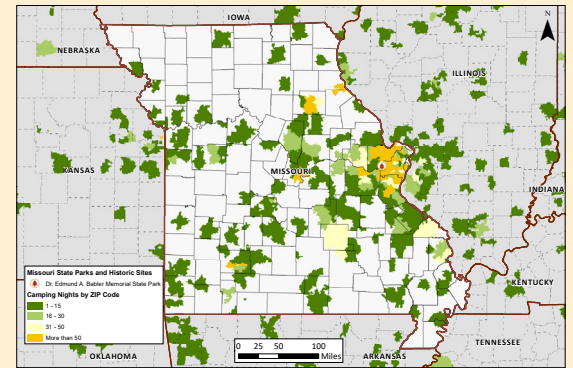
NUMBER OF CAMPING NIGHTS SOLD:* 12,616

NUMBER OF CAMPSITES: 75

NUMBER OF GROUP CAMPS: 1

NUMBER OF OVERNIGHT GUESTS:* 29,313

CAMPING NIGHTS SOLD BY ZIP CODE: >>>>>>

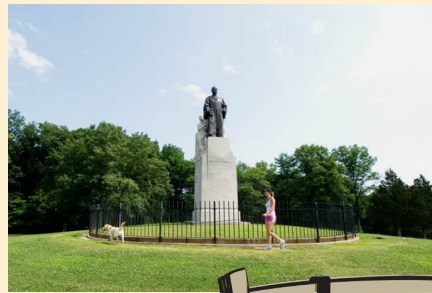


SPECIAL EVENTS

MISSOURI STATE PARK EVENTS: 1

SCHOOL GROUPS: 61

PHOTO ALBUM



* All numbers through December 2023. † Information includes park and concession-run operations. ** Estimated park and concession sales tax paid.