

# Johnson's Shut-Ins State Park

BY THE NUMBERS

**LOCATION:** Reynolds County

**NUMBER OF ACRES:** 9,432.27

**NUMBER OF FULL-TIME STAFF:** 8

**NUMBER OF PART-TIME STAFF:** 13

**VOLUNTEER HOURS:\*** 4,530

**STEWARDSHIP HOURS:** 1255.65

**2023 ATTENDANCE:\*** 197,076

**MILES OF TRAIL:** 36.7

**NUMBER OF STRUCTURES:** 57

**MILES OF ROADWAYS:** 4.84

**NUMBER OF PROGRAMS PRESENTED:\*** 94

**STATE SALES TAX PAID:\*** \$29,104.15

**LOCAL SALES TAX PAID:\*** \$10,332.83

**TOTAL SALES TAX:** \$39,436.99

BUDGET

**SMALL MAINTENANCE & REPAIR BUDGET:** \$19,800

**ANNUAL BUDGET:** \$763,328.00

**CAPITAL IMPROVEMENTS PROJECTS IN PROGRESS:\*** 2

CAMPING & LODGING

**NUMBER OF CAMPING NIGHTS SOLD:\*** 11,896

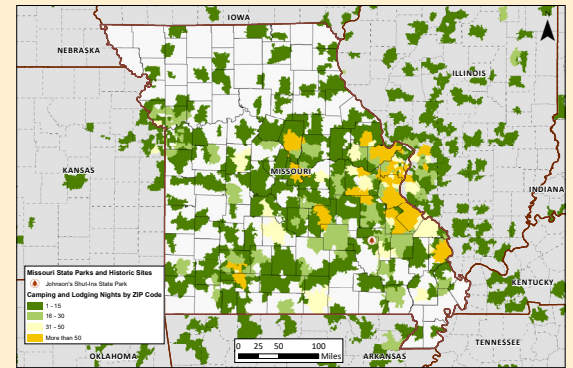
**NUMBER OF LODGING NIGHTS SOLD:\*** 1,316

**NUMBER OF CAMPSITES:** 79

**NUMBER OF LODGING UNITS:** 6

**NUMBER OF OVERNIGHT GUESTS:\*** 40,447

**CAMPING NIGHTS SOLD BY ZIP CODE:** >>>>>>



SPECIAL EVENTS

**MISSOURI STATE PARK EVENTS:** 3

**THIRD PARTY EVENTS:** 1

PHOTO ALBUM



\* All numbers through December 2022. † Information includes park and concession-run operations. \*\* Estimated park and concession sales tax paid.