

Bennett Spring State Park

BY THE NUMBERS

LOCATION: Dallas and Laclede counties
NUMBER OF ACRES: 3,338.55
NUMBER OF FULL-TIME STAFF: 11
NUMBER OF PART-TIME STAFF: 8
VOLUNTEER HOURS:* 9,756
STEWARDSHIP HOURS: 1,936.90
2022 ATTENDANCE:* 1,324,725

MILES OF TRAIL: 13.8
NUMBER OF STRUCTURES: 60
MILES OF ROADWAYS: 6.94
NUMBER OF PROGRAMS PRESENTED:* 237
STATE SALES TAX PAID:* ** \$186,620.16
LOCAL SALES TAX PAID:* ** \$52,474.50
TOTAL SALES TAX: \$239,094.66

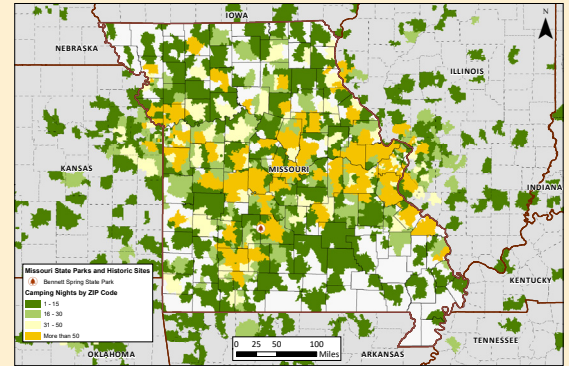
BUDGET

SMALL MAINTENANCE & REPAIR BUDGET: \$79,000.00
CAPITAL IMPROVEMENTS PROJECTS IN PROGRESS:* 3

CAPITAL IMPROVEMENTS PROJECTS COMPLETED:* 1
ANNUAL BUDGET: \$782,646.00

CAMPING & LODGING

NUMBER OF CAMPING NIGHTS SOLD:* 27,944
NUMBER OF LODGING NIGHTS SOLD:* † 10,208
NUMBER OF CAMPSITES: 191
NUMBER OF LODGING UNITS:† 65
NUMBER OF OVERNIGHT GUESTS:* † 78,350
CAMPING NIGHTS SOLD BY ZIP CODE: >>>>>>



SPECIAL EVENTS

MISSOURI STATE PARK EVENTS: 39
SIGNATURE EVENT: Bennett Traditions

PHOTO ALBUM



* All numbers through December 2022. † Information includes park and concession-run operations. ** Estimated park and concession sales tax paid.