

Meramec State Park

BY THE NUMBERS

LOCATION: Crawford, Franklin and Washington counties

NUMBER OF ACRES: 6,896.33

NUMBER OF FULL-TIME STAFF: 10

NUMBER OF PART-TIME STAFF: 10

VOLUNTEER HOURS:* 3,969

STEWARDSHIP HOURS: 965

2023 ATTENDANCE:* 369,762

MILES OF TRAIL: 14.4

NUMBER OF STRUCTURES: 54

MILES OF ROADWAYS: 9.88

NUMBER OF PROGRAMS PRESENTED:* 24

STATE SALES TAX PAID:** ** \$41,913.89

LOCAL SALES TAX PAID:** ** \$22,321.01

TOTAL SALES TAX: \$64,234.89

BUDGET

SMALL MAINTENANCE & REPAIR BUDGET: \$86,341.00

CAPITAL IMPROVEMENTS PROJECTS IN PROGRESS:* 2

CAPITAL IMPROVEMENTS PROJECTS COMPLETED:* 1

ANNUAL BUDGET: \$703,022.00

CAMPING & LODGING

NUMBER OF CAMPING NIGHTS SOLD:* 17,934

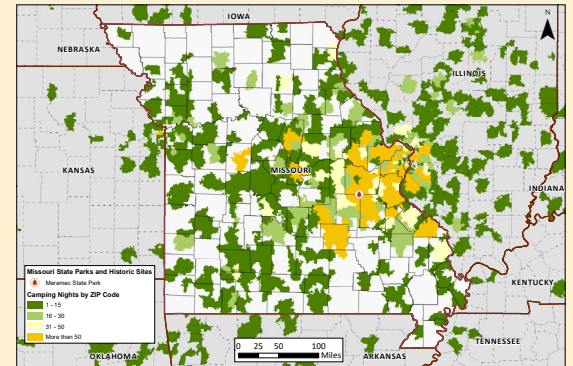
NUMBER OF LODGING NIGHTS SOLD:* † 1,743

NUMBER OF CAMPSITES: 215

NUMBER OF LODGING UNITS:* † 41

NUMBER OF OVERNIGHT GUESTS:* † 59,563

CAMPING NIGHTS SOLD BY ZIP CODE: >>>>>>



SPECIAL EVENTS

MISSOURI STATE PARK EVENTS: 2

THIRD PARTY EVENTS: 2

SIGNATURE EVENT: Spooktacular

PHOTO ALBUM

